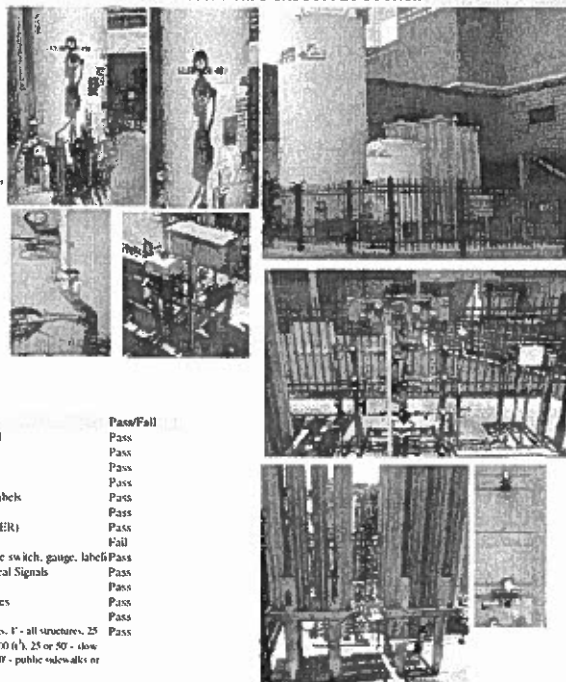
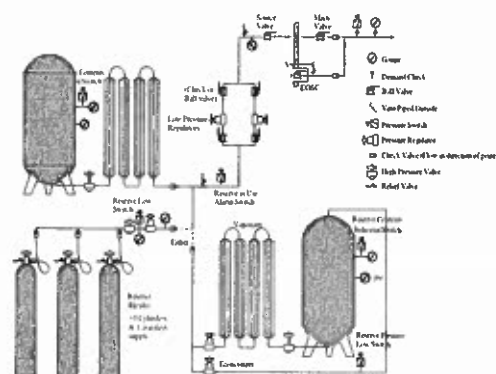


HOSPITAL'S GAS SUPPLY SOURCE

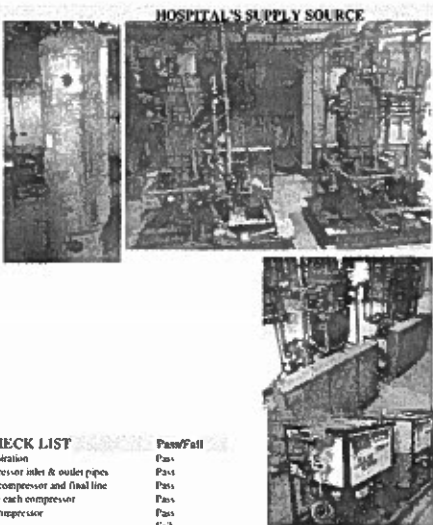
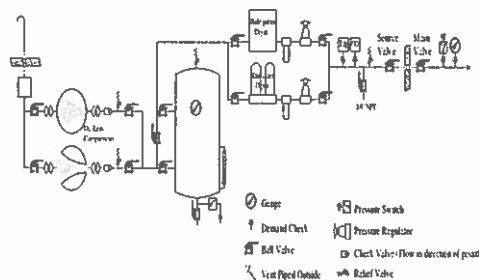
INSPECTION CHECK LIST

Location	Receiving Dock	Tanks and/or Cylinders adequately secured	Pass	
Facility area(s) served	Entire Facility	Piped with copper, brass, or stainless	Pass	
Hulk Supplier/Equipment Owner	Air Products	Adequate Pressure Reliefs	Pass	
National Board Number (Primary)	8421	Lockable Entry	Pass	
National Board Number (Reserve)		"Oxygen, No Smoking, No Open Flame" Labels	Pass	
Primary Tank Liquid Level	85	³ H ₂ O Cylinder Checks Installed	Pass	
Primary Tank Pressure	150	psi	Adequate Emergency Supply (EOSC) or (IBEL)	Pass
Intermediate Regulator Pressure	155	psi	EOSC emergency secured & labeled	Fail
Reserve Tank Liquid Level	75	³ H ₂ O	Source valve, main valve, check line pressure switch, gauge, label	Pass
Reserve Tank Pressure	155	psi	Adequate Switches for Master Alarms & Local Signals	Pass
Reserve Regulator Pressure	140	psi	Adequate concrete fill pad (3" in diameter)	Pass
Fill Line Pressure (1)	50	psi	Not exposed to failure of electrical power lines	Pass
Main Valve Pressure	50	psi	Free of Flammable liquid & gases	Pass
			50' wood framed building, 10' building openings, 1' all structures, 25 or 30' flammable liquid storage (<1000 or >1000 ft ³ , 25 or 50' slow or rapid burning solids, 50' - public assembly, & 10' - public sidewalks or parked vehicles (2 hr Wall)	Pass

MEDICAL AIR COMPRESSOR SYST (2)
Medical Gas and Vacuum Systems Inspection/Testing

VA Ann Arbor
Ann Arbor, MI

SCHEMATIC PER NFPA 99, 2012



SYSTEM INFORMATION

Location	West Mech Rm. Sub Basement			
COMPONENT	MANUF.	MODEL	SPEC (Serial/Type)	
System	Quincy	QDD25WLV/D	Vertical Recip	
Compressor	Quincy	QDD25	480/3PH	Voltage/Ph/Hz
Refrigerant	Delcrest	RDM50	Refrigerant	Type (Elec. or Ref.)
DP Monitor	Shaw	SD2-4257	-92	'T' (Readings)
CO Monitor	Lawson	ISA-RAL-M	0	ppm (Readings)
After Cooler	Single	Type (Individual, Single, Dual)	Type - Air	

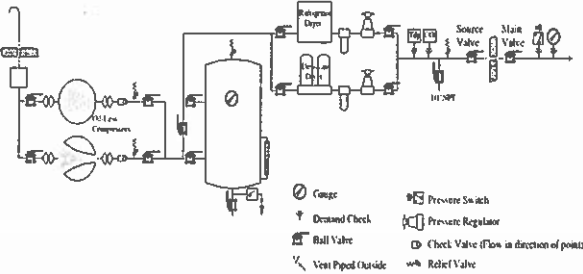
INSPECTION CHECK LIST

Used only for human respiration	Pass/Fail
Flex connectors on compressor inlet & outlet pipes	Pass
Pressure relief after each compressor and final line	Pass
Isolation valves to service each compressor	Pass
Check valves after each compressor	Pass
Lag alarm function	Fail
Emergency Power	Pass
Manual disconnect switches	Pass
Automatic Alternation	Pass
Receiver: Auto drain, pressure gauge, sight glass, high water level (if required), bypass, pressure relief, ASME label, & corrosion resistant	Pass
Filters & Regulators can be isolated for service	Pass
Source valve in place / labeled	Pass
Main valve in place / labeled	N/A
Pipeline labeled	Pass
Sample port installed	Pass
Intake above roof level, >20' above ground, 10 ft from doors, windows, other openings, or any exhaust	Pass

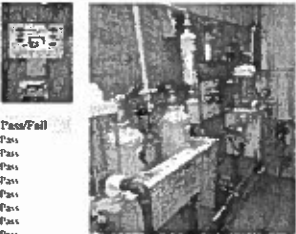
MEDICAL AIR COMPRESSOR SYST (3)
Medical Gas and Vacuum Systems Inspection/Testing

VA Ann Arbor
Ann Arbor, MI

SCHEMATIC PER NFPA 99, 2012



HOSPITAL'S SUPPLY SOURCE



SYSTEM INFORMATION

Location	Arch Rm F200 Liberty Building	MODEL	QRDS5P 240 QRDS-15	SPEC (Serial/Type)	921813 458 Recip
COMPONENT	MANUT.				
System	Allied				
Compressor	Quincy				
Dryers	Zeks	CDP0171000	Devacant	Type (Des. or Ref.)	
DP Monitor	Hydrodynamic		-102.6	4 (Reading)	
CO Monitor	Khan		0	ppm (Reading)	
After Cooler	Slagle	Type (Individual, Single, Dual)		Type - Air	
Lead In	Rpvc				

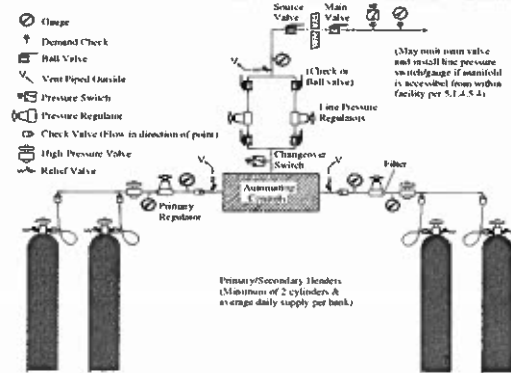
INSPECTION CHECK LIST

Used only for human respiration	Pass/Fail
Flex connectors on compressor inlet & outlet pipes	Pass
Pressure relief after each compressor and final line	Pass
Isolation valves in service each compressor	Pass
Check valves after each compressor	Pass
Lag alarm function	Pass
Emergency Power	Pass
Manual disconnect switches	Pass
Automatic Alternation	Pass
Receiver: Auto drain, pressure gauge, sight glass, high water level (if required), bypass, pressure relief, ASME label, & corrosion resistant	Pass
Tubers & Regulators can be isolated for service	Pass
Source valve in place / labeled	Pass
Main valve in place / labeled	N/A
Pipeline labeled	Pass
Sample ports installed	Pass
Intake above roof level, >20' above ground, 10 ft from doors, windows, other openings, or any exhaust	Pass

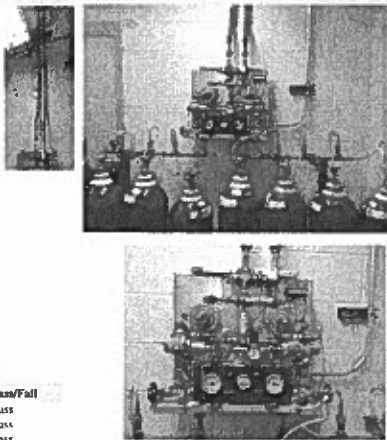
NITROUS OXIDE MANIFOLD
Medical Gas and Vacuum Systems Inspection/Testing

VA Ann Arbor
Ann Arbor, MI

SCHEMATIC PER NFPA 99, 2012



HOSPITAL'S GAS SUPPLY SOURCE

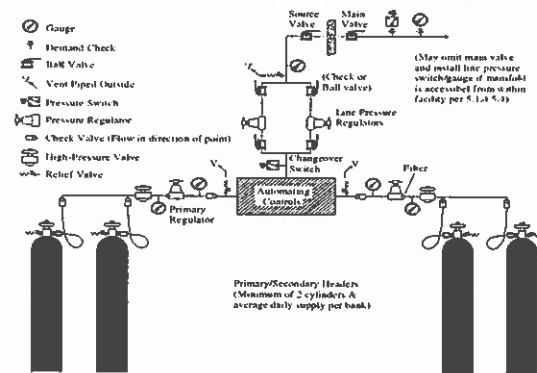


SYSTEM INFORMATION		INSPECTION CHECK LIST		Pass/Fail
Location	Room CB17	Cylinders labeled		Pass
Facility area(s) served	Entire Facility	Source valve in place / labeled		Pass
Manufacturer	Allied	Main valve in place / labeled / secured		Pass
Model	2500	Pipeline labeled		Pass
Serial Number	86-53-2102	Lockable Entry		Pass
Change-over actuation	100 psi	Cylinders adequately secured		Pass
Left Cylinder Bank	750 psi	Free of Flammable liquids & gases		Pass
Right Cylinder Bank	800 psi	Flexible Pigtails with Checks		Pass
Final Line (in Manifold)	49 psi	Temperature range 20-130°F		Pass
		Ventilation (2x72in low velocity) or exhaust (7 high)		Fail
		Electrical devices 5' high		Pass
		Emergency Power		Pass
		Automatic Alteration		Pass
		Status/Warning Lights		Pass
		Relief Valves vented outside		Pass
		Door Label: CAUTION, Medical Gases, NO Smoking or Open Flame, Room May Have Insufficient Oxygen Open Door & Allow Room to Ventilate before Entering		Fail

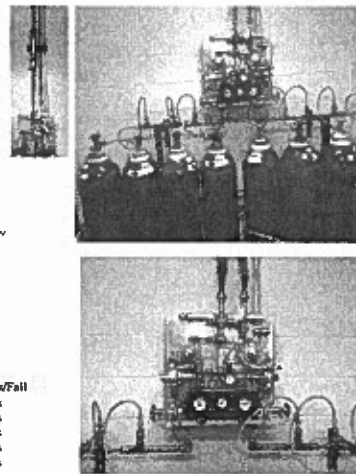
NITROGEN MANIFOLD *Medical Gas and Vacuum Systems Inspection/Testing*

VA Ann Arbor
Ann Arbor, MI

SCHEMATIC PER NFPA 99, 2012



HOSPITAL'S GAS SUPPLY SOURCE

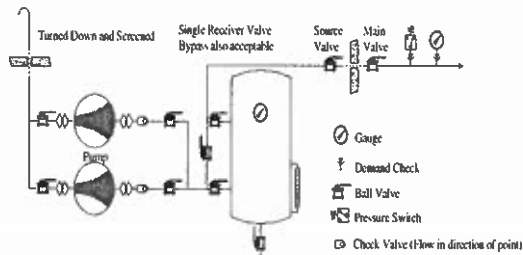


SYSTEM INFORMATION		INSPECTION CHECK LIST		Pass/Fail
Location	Room C/B17	Cylinders labeled		Pass
Facility area(s) served	Entire Facility	Source valve in place / labeled		Pass
Manufacturer	Allied	Main valve in place / labeled / Secured		Pass
Model	2500	Pipe-line labeled		Pass
Serial Number	86-56-2102	Lockable Entry		Pass
		Cylinders adequately secured		Pass
Change-over actuation	225 psi	Free of Flammable liquids & gases		Pass
Left Cylinder Bank	250 psi	Flexible Pigtaills with Checks		Pass
Right Cylinder Bank	2350 psi	Temperatures less than 130°F		Pass
Final Line (in Manifold)	200 psi	Ventilation 2.72 in ³ /hour @ 1000 ft ³ or exhaust 1' high		Fail
		Electrical devices 5' high		Pass
		Emergency Power		Pass
		Automatic Alteration		Pass
		Status/Warning Lights		Pass
		Relief Valves vented outside		Pass
		Door Label: CAUTION: Medical Gases, NO Smoking or Open Flame, Room May Have Insufficient Oxygen Open Door & Allow Room to Ventilate before Entering		Fail

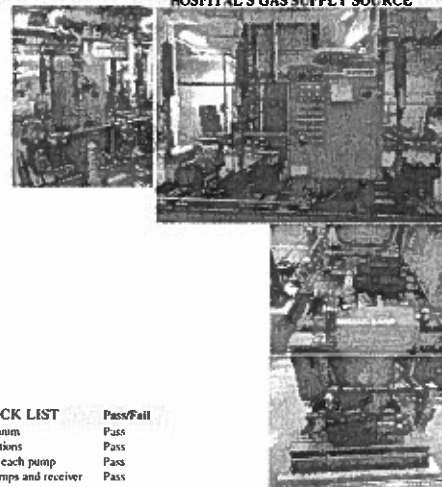
VACUUM SOURCE EQUIPMENT *Medical Gas and Vacuum Systems Inspection/Testing*

VA Ann Arbor
Ann Arbor, MI

SCHEMATIC PER NFPA 99, 2012



HOSPITAL'S GAS SUPPLY SOURCE



SYSTEM INFORMATION

Location	Mech. Rm. PP
Area(s) served	Entire Facility
COMPONENT	MANUF. MODEL
System	Allied TRVB40-2.5
Pump 1	Rietzche VCEH-160
Pump 2&3	Gardner Denve C-VLR 160
480V/560	Voltage/Ph/Hz

SPEC (Serial#/Type)
Oil lubed rotary

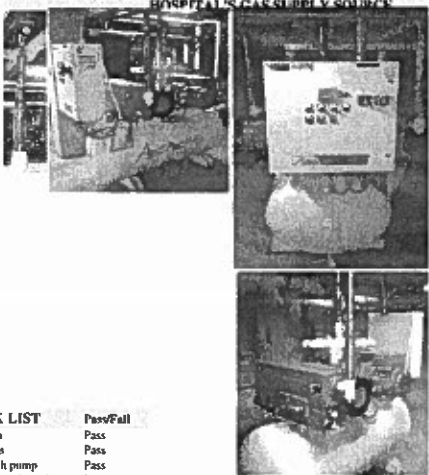
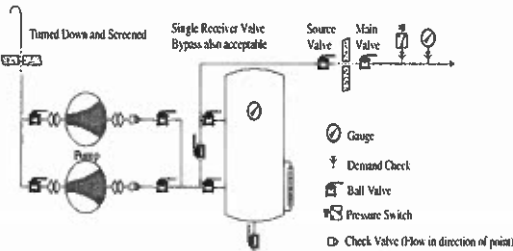
INSPECTION CHECK LIST

	Pass/Fail
Dedicated to medical vacuum	Pass
Adequate flexible connections	Pass
Isolation valves to service each pump	Pass
Check valves between pumps and receiver	Pass
Lag alarm function	Pass
Automatic Alternation	Pass
Status/Warning Lights	Pass
Receiver By pass	Pass
Tank Drain	Pass
Exhaust Location	Pass
Source valve in place / labeled	Pass
Main valve in place / labeled	N/A
Pipeline labeled	Pass
Emergency Power	Pass

VACUUM SOURCE EQUIPMENT (2)
Medical Gas and Vacuum Systems Inspection/Testing

VA Ann Arbor
Ann Arbor, MI

SCHEMATIC PER NFPA 99, 2012



SYSTEM INFORMATION

Location West Mech Rm. Sub Basement

COMPONENT	MANUF.	MODEL	SPEC (Serial#/Type)
System	Amiko	V-RVL-D-200P-T11-N-100-4606J-M	Job Q5914
Pump	Busch	RC0255.DS26.1017	
Motors	Baldor		480V/60 Voltage/Ph/Hz

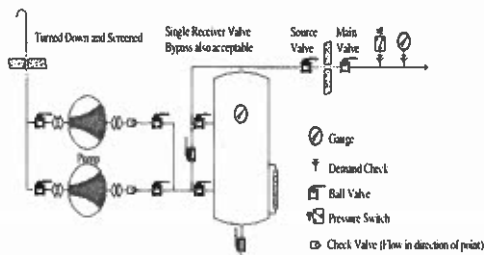
INSPECTION CHECK LIST

Dedicated to medical vacuum	Pass/Fail
Adequate flexible connections	Pass
Isolation valves to service each pump	Pass
Check valves between pumps and receiver	Pass
Lag alarm function	Pass
Automatic Alternation	Pass
Status/Warning Lights	Pass
Receiver By pass	Pass
Tank Drain	Pass
Exhaust Location	Pass
Source valve in place / labeled	Pass
Main valve in place / labeled	Pass
Pipeline labeled	Pass
Emergency Power	Pass

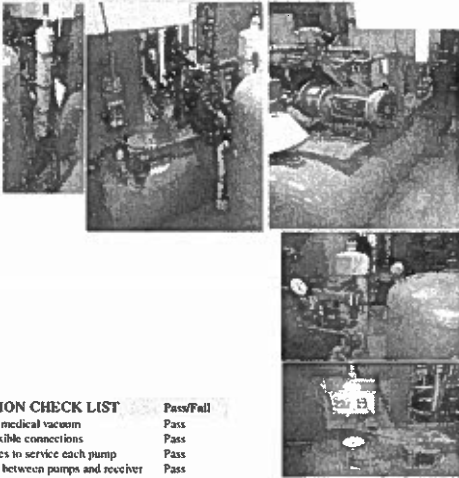
VACUUM SOURCE EQUIPMENT (3)
Medical Gas and Vacuum Systems Inspection/Testing

VA Ann Arbor
Ann Arbor, MI

SCHEMATIC PER NFPA 99, 2012



HOSPITAL'S GAS SUPPLY SOURCE



SYSTEM INFORMATION

Location	Mech Rm. F200	
	Liberty Building	
COMPONENT	MANUF.	MODEL
System	Nash	MHF 50

INSPECTION CHECK LIST

Dedicated to medical vacuum	Pass/Fail
Adequate flexible connections	Pass
Isolation valves to service each pump	Pass
Check valves between pumps and receiver	Pass
Lag alarm function	Fail
Automatic Alternation	Fail
Status/Warning Lights	Pass
Receiver By pass	Pass
Tank Drain	Pass
Exhaust Location	Pass
Source valve in place / labeled	Pass
Main valve in place / labeled	N/A
Pipeline labeled	Pass
Emergency Power	Pass

