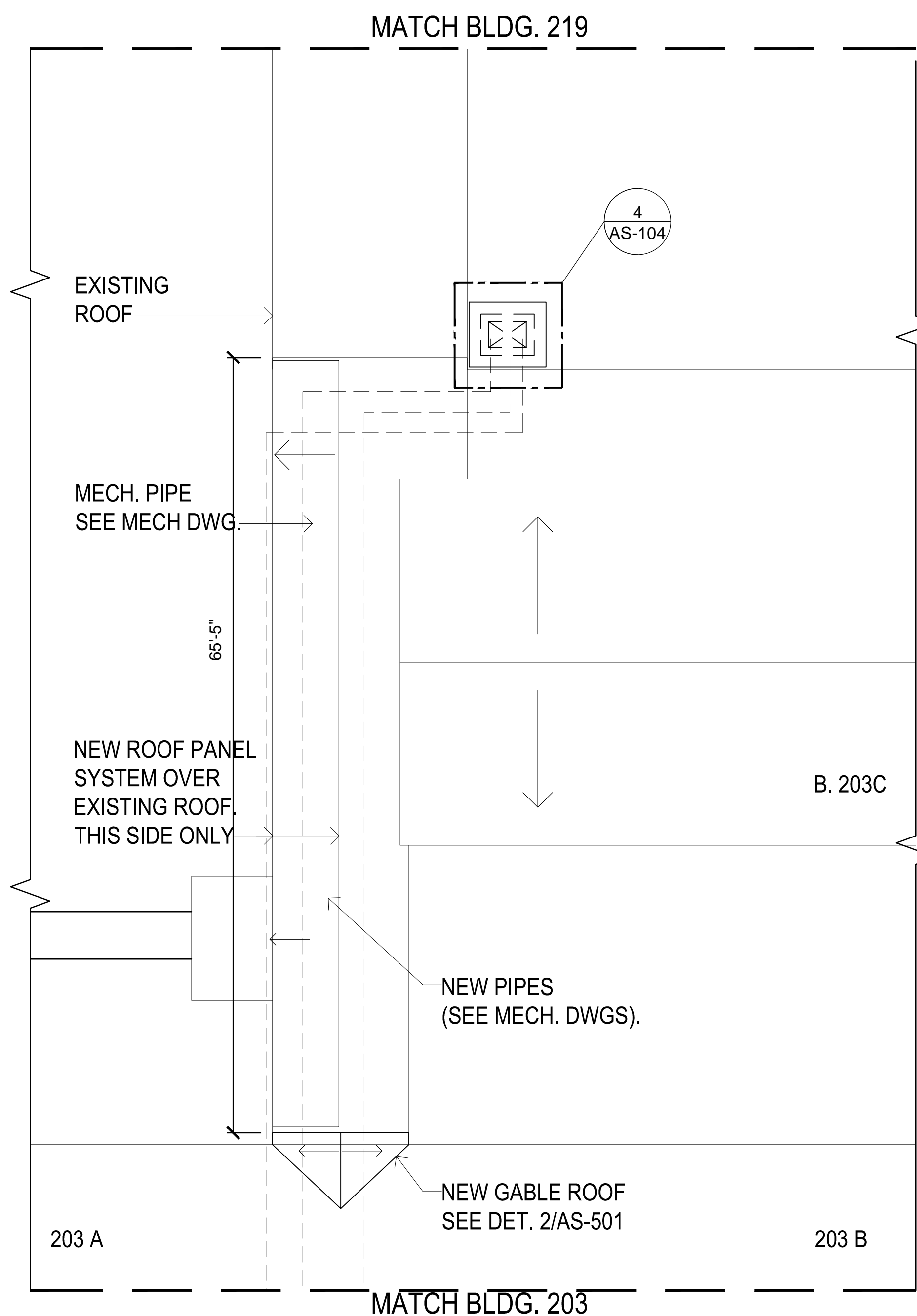
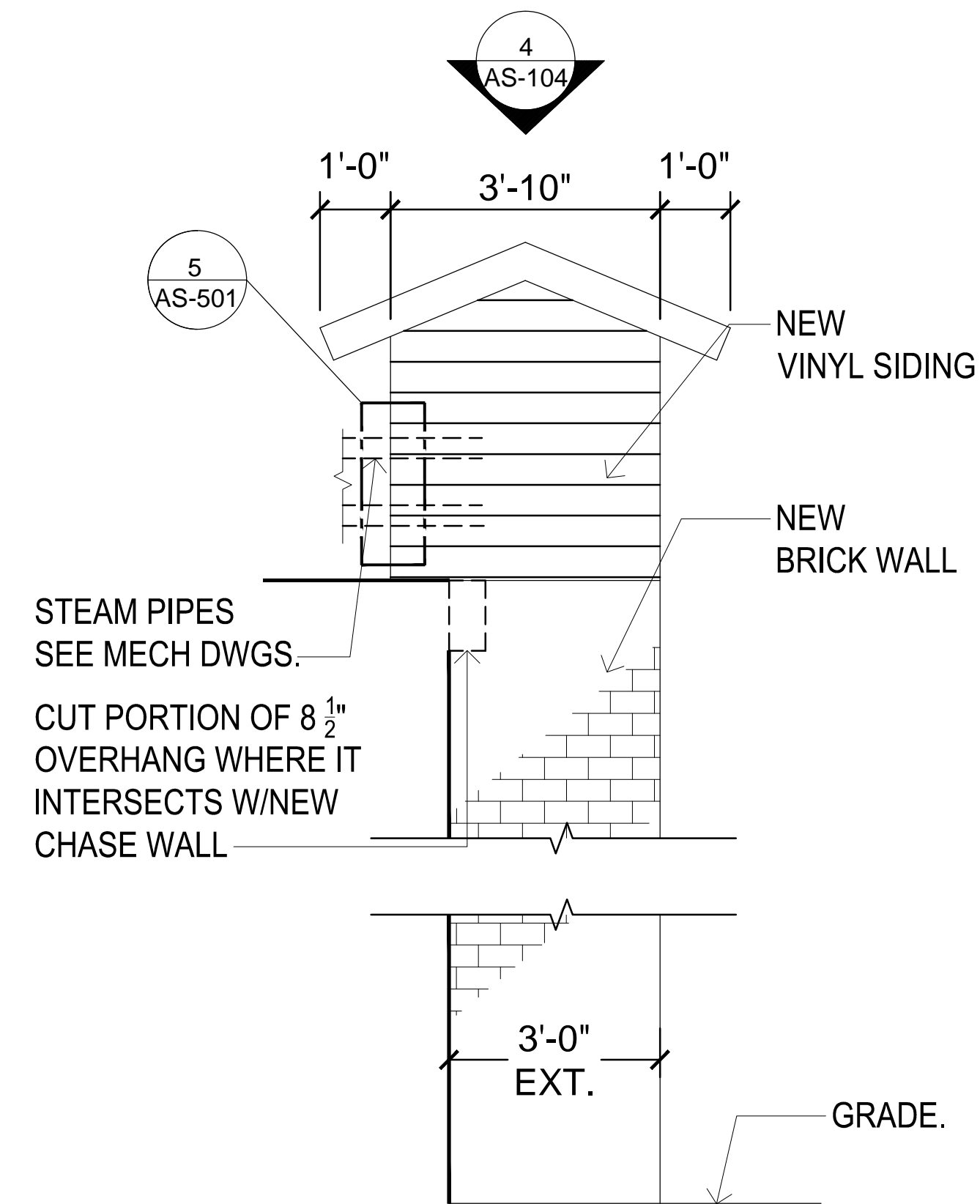


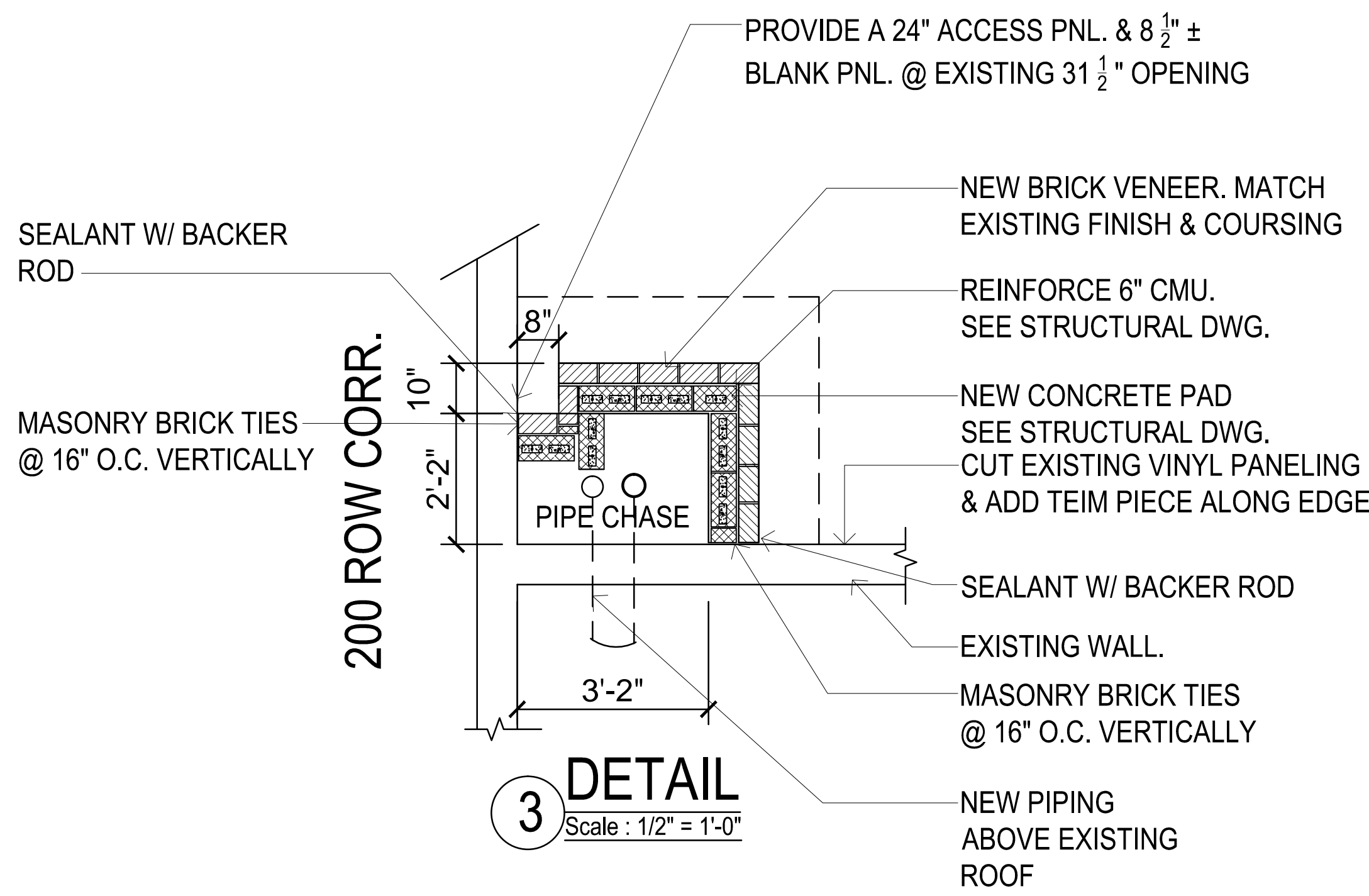
1 Floor Plan 200 Row (Bldg. 203)
Scale : 1/8" = 1'-0"



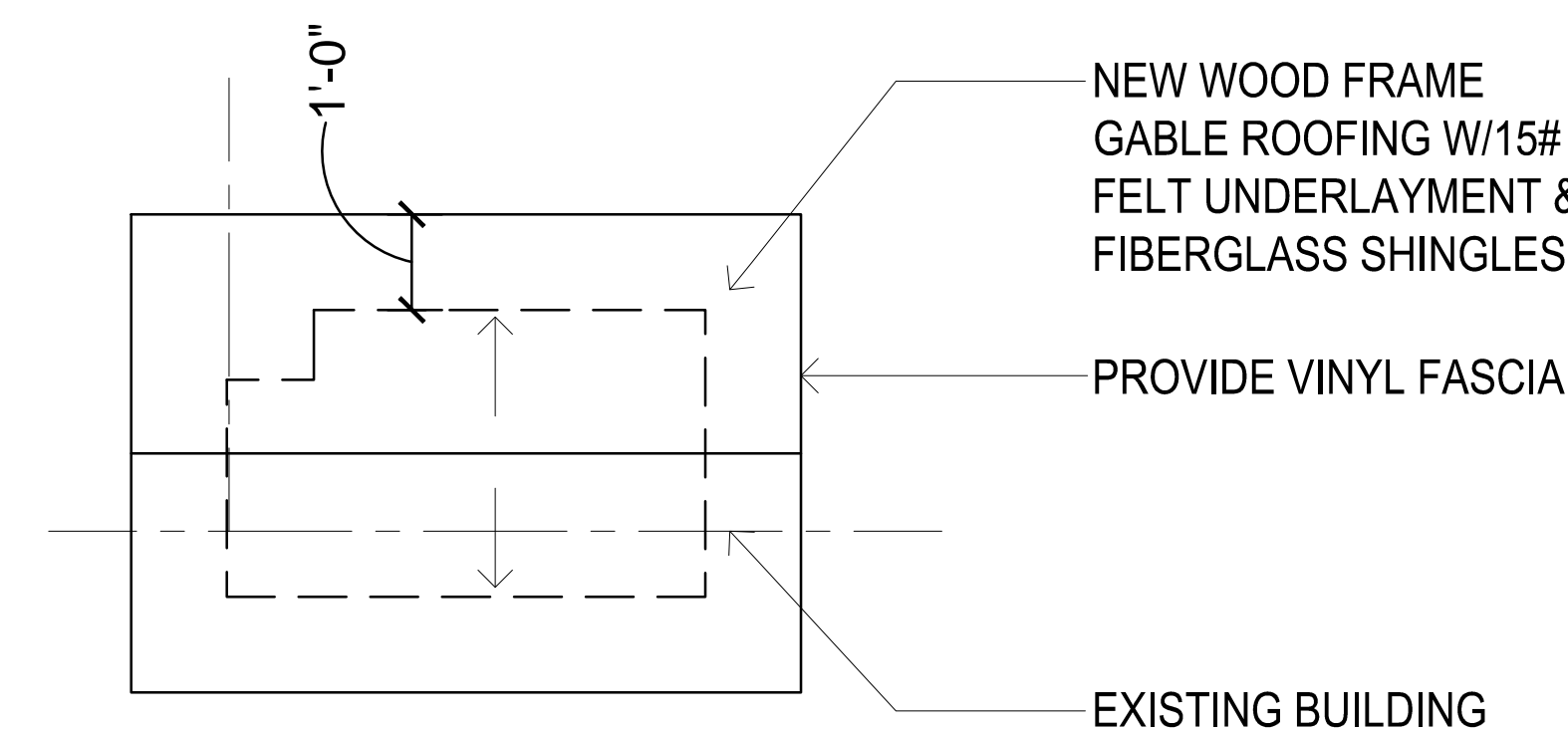
2 Partial Roof Plan 200 Row (Bldg. 203)
Scale : 1/8" = 1'-0"



5 Exterior Elevation
Scale : 1/2" = 1'-0"



3 DETAIL
Scale : 1/2" = 1'-0"



4 CHASE ROOF PLAN DETAIL
Scale : 1/2" = 1'-0"

Revisions	Date

CONSULTANTS HENRY ADAMS <small>Consulting Engineers</small> <small>MECHANICAL, ELECTRICAL & PLUMBING ENGINEERS</small> MECHANICAL, PLUMBING, ELECTRICAL <small>HENRY ADAMS 600 BALTIMORE AVENUE BALTIMORE, MD 21204</small>			 STRUCTURAL, CIVIL, COST ESTIMATING <small>ALPHA CORPORATION 1800 WASHINGTON BOULEVARD SUITE 425 BALTIMORE, MD 21220</small>	 FIRE PROTECTION ENGINEERS <small>KOFFEL ASSOCIATES FIRE PROTECTION ENGINEERS 8815 CENTRE PARK DRIVE SUITE 200 COLUMBIA, MD 21045-2107</small>
---	--	--	---	---

 <small>ARCHITECTURAL REGISTRATION BOARD 8006-A ERNEST BLAND STATE OF MARYLAND</small>

ARCHITECTS ERNEST BLAND ASSOCIATES, P.C. TECHNICAL FACILITIES DESIGN <small>802 SLIGO AVENUE, SILVER SPRING, MARYLAND 20910 TELEPHONE (301) 589-4811 FAX (301) 589-3810</small>

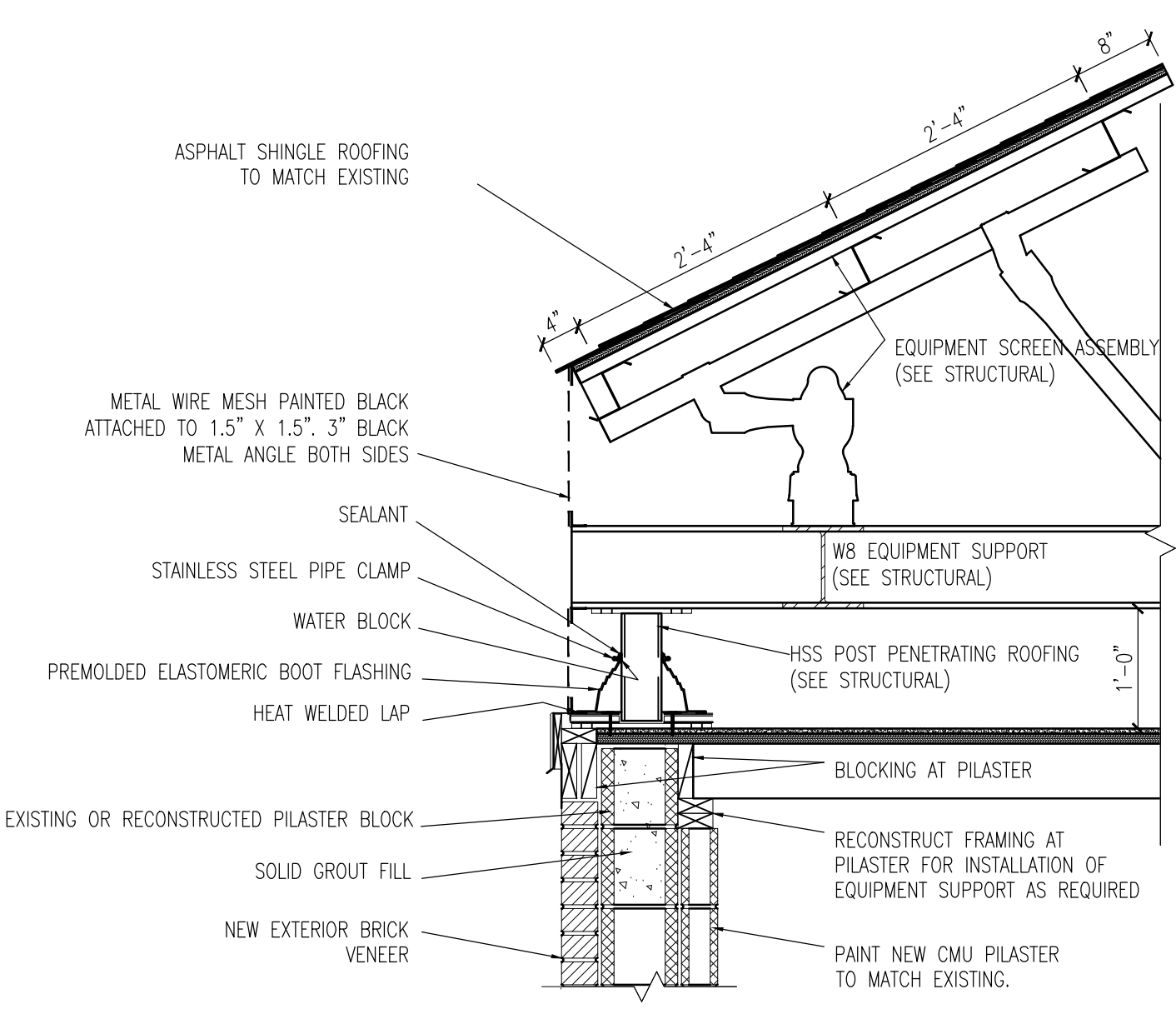
Drawing Title Enlarge Proposed Roof Plan Exterior Elevation & Details Approved: Project Director Not for Construction
--

Project Title MARTINSBURG TASK 7 STEAM UPGRADE FOR 200 ROW Location VAMC MARTINSBURG, WV Date MARCH 13, 2015 Checked CB Drawn ER
--

Project Number 613-12-106 Building Number 200 Row Drawing Number AS-104

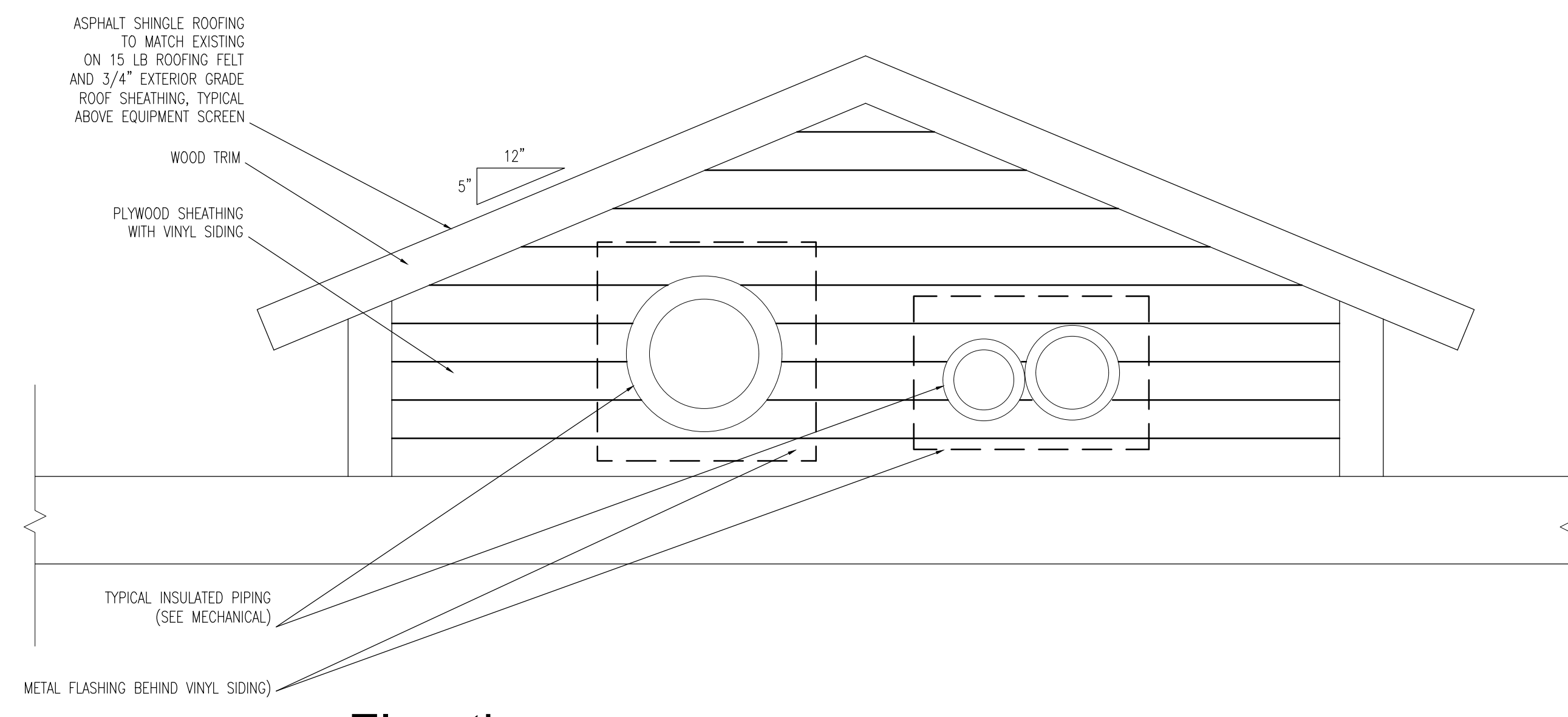
Department of Veterans Affairs

BID SUBMISSION



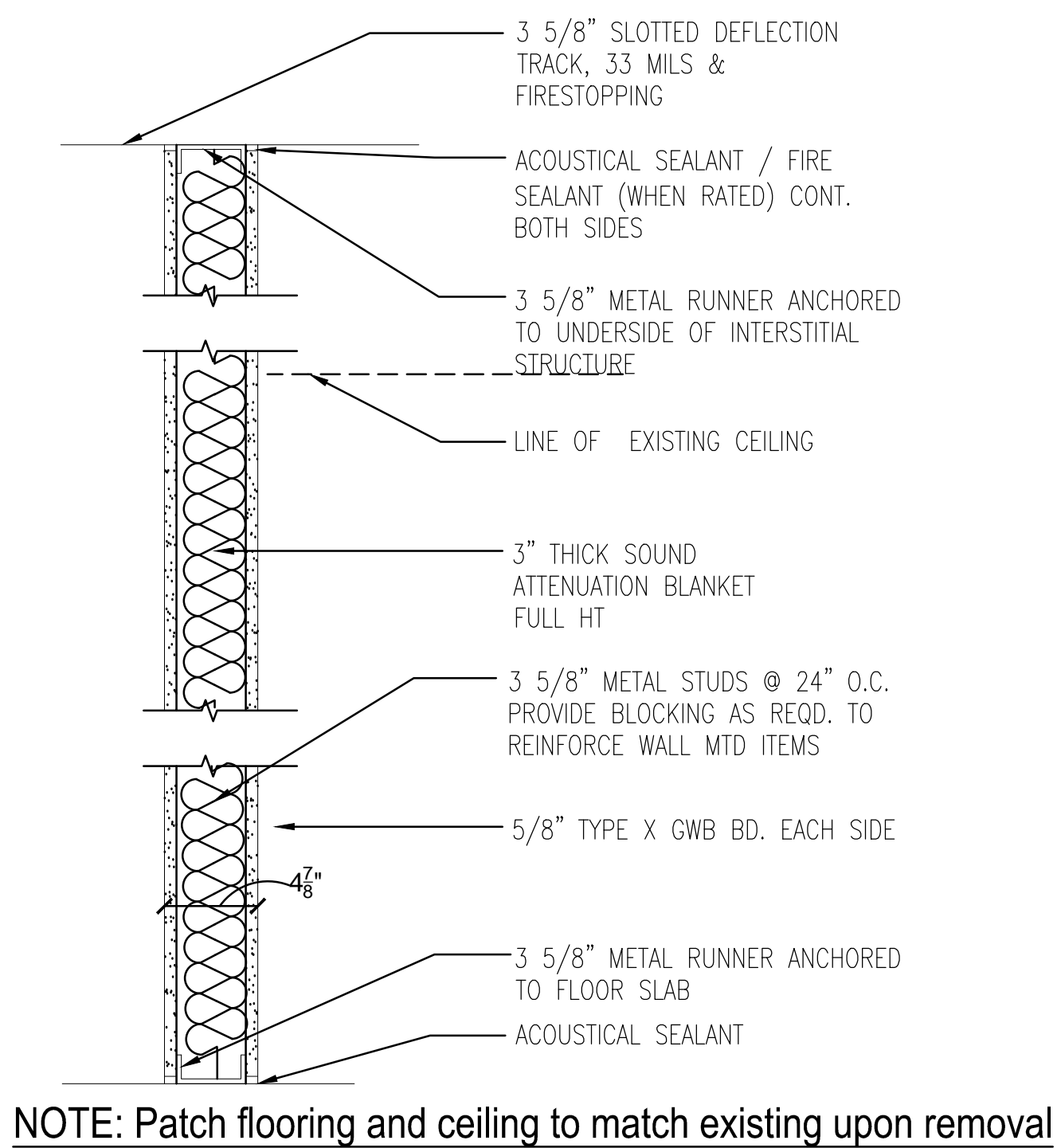
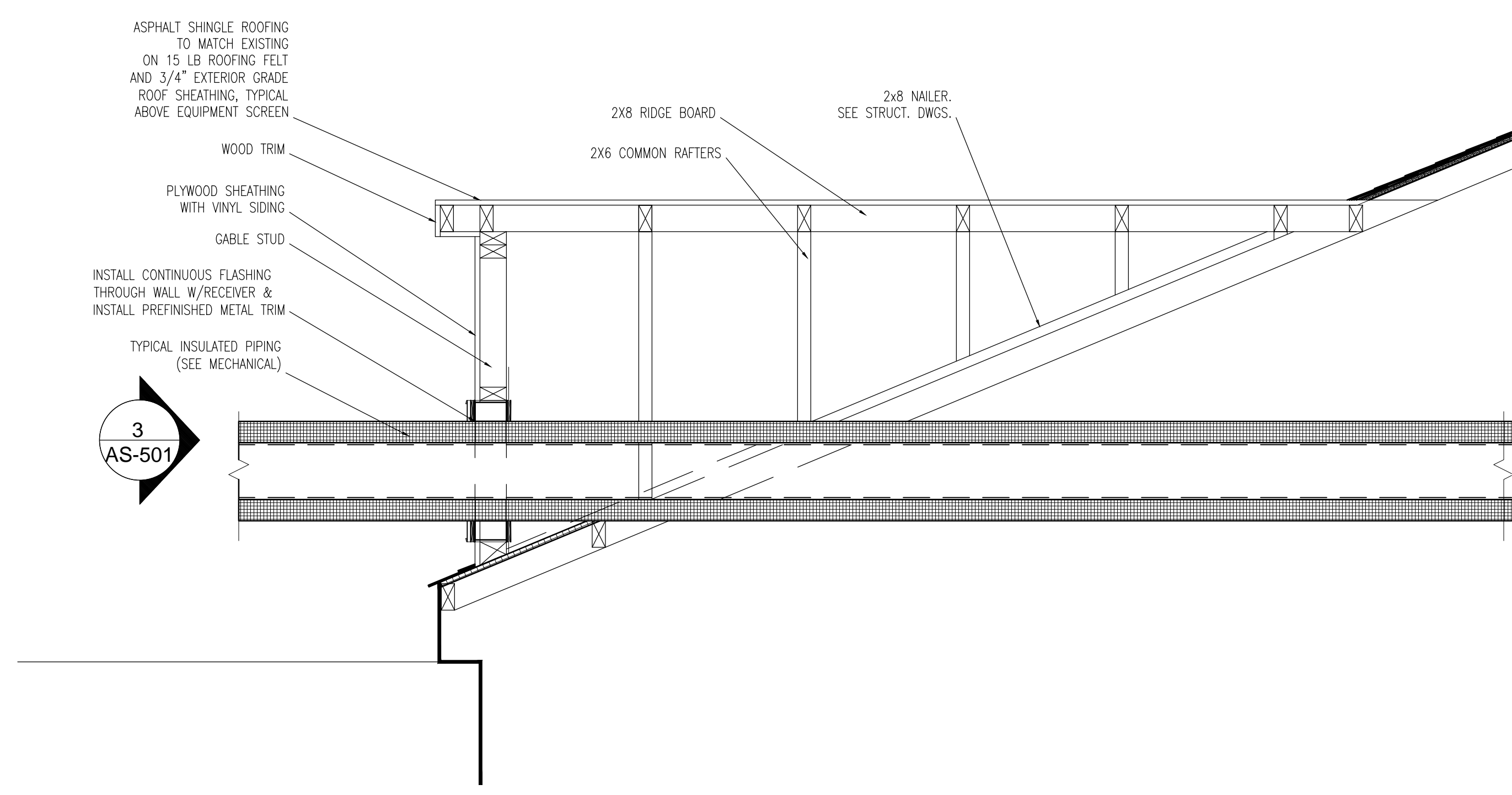
TYPICAL SECTION DETAIL AT PILASTER AND EQUIPMENT SUPPORT POST
(SEE TYPICAL SECTION THROUGH CONNECTING CORRIDOR ROOF FOR ADDITIONAL CALLOUTS)

1 Detail
Scale : 1" = 1'-0"



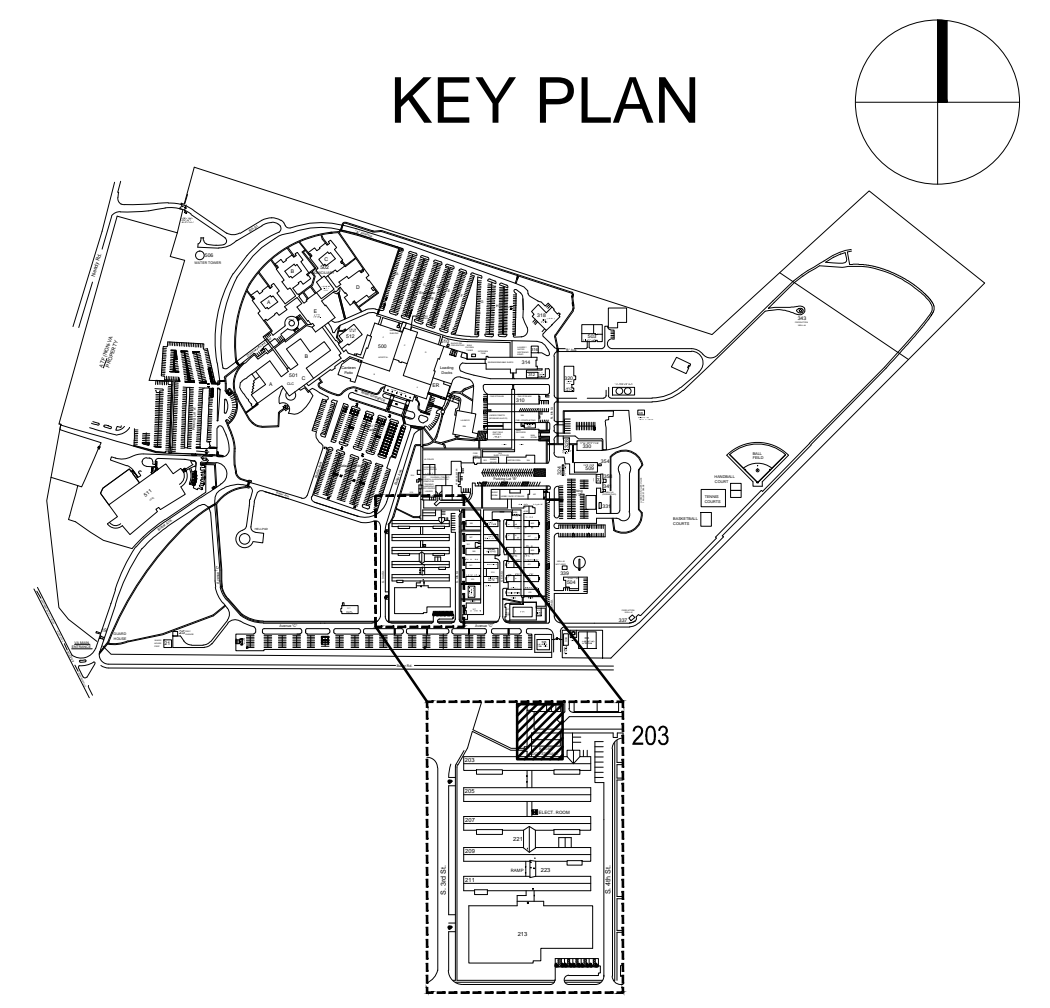
3 Elevation
Scale : 1" = 1'-0"

2 Section
Scale : 1" = 1'-0"

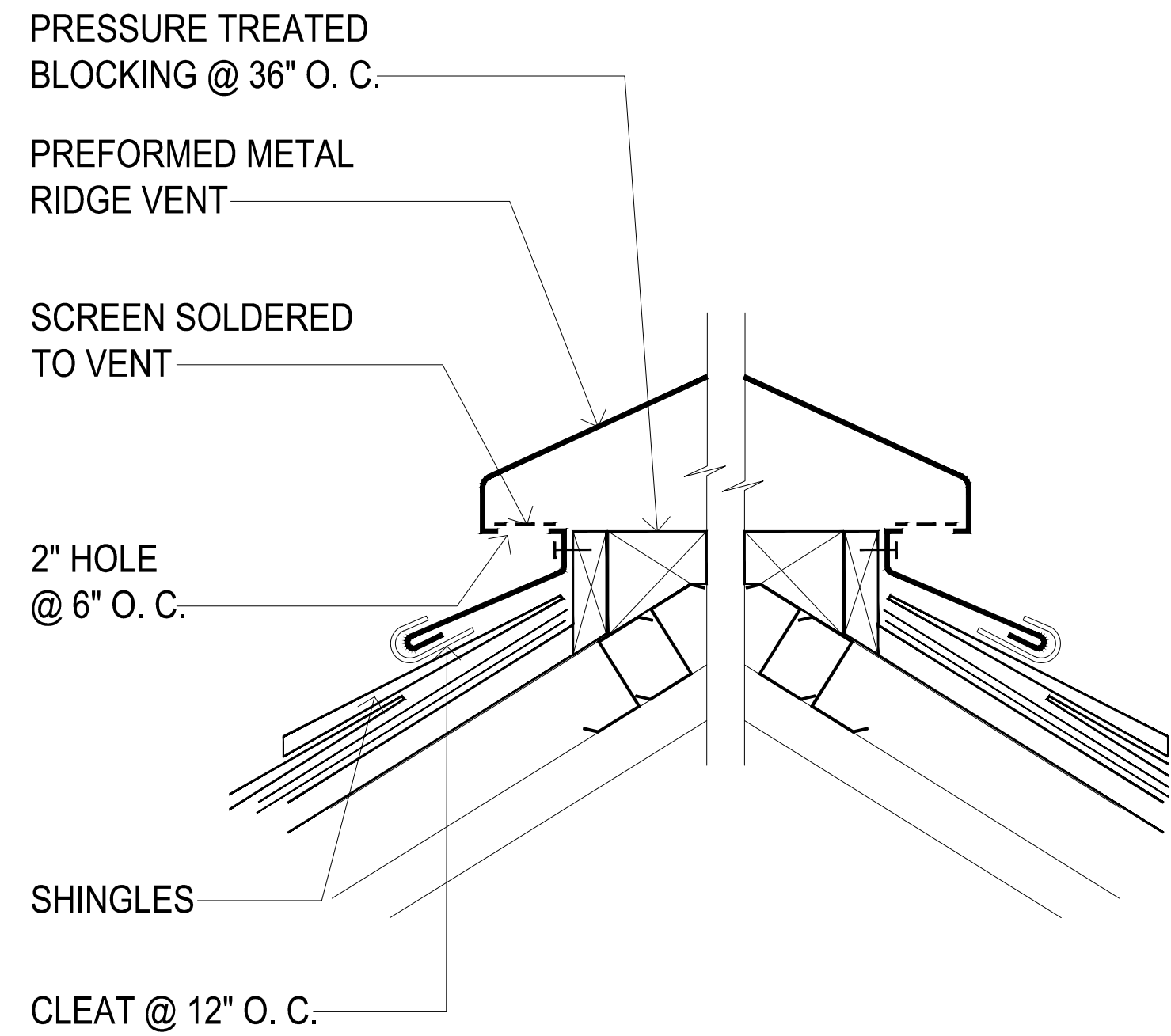


NOTE: Patch flooring and ceiling to match existing upon removal

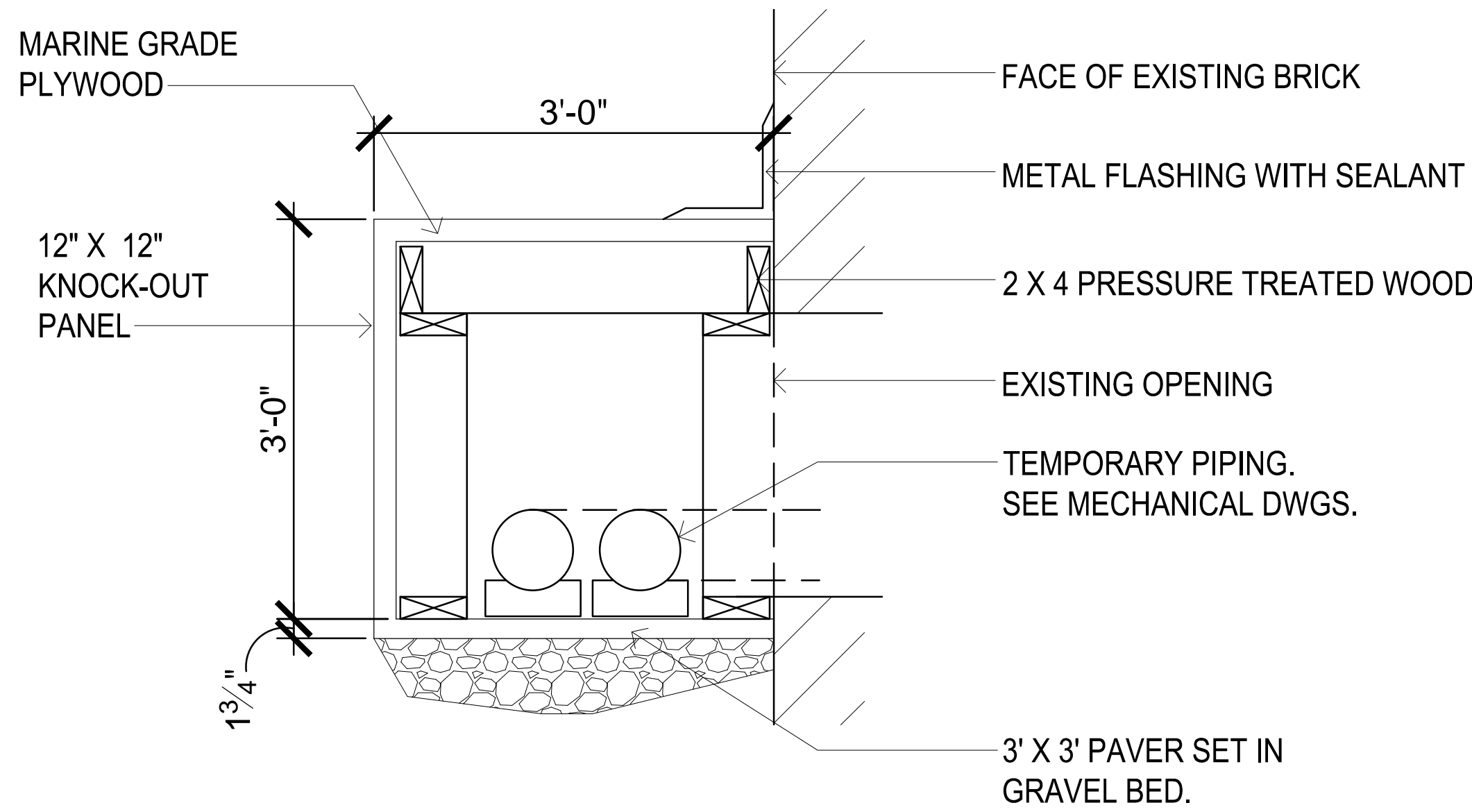
4 ICRA Wall Detail
(1 HR. Rated Partition)
Scale : 1 1/2" = 1'-0"



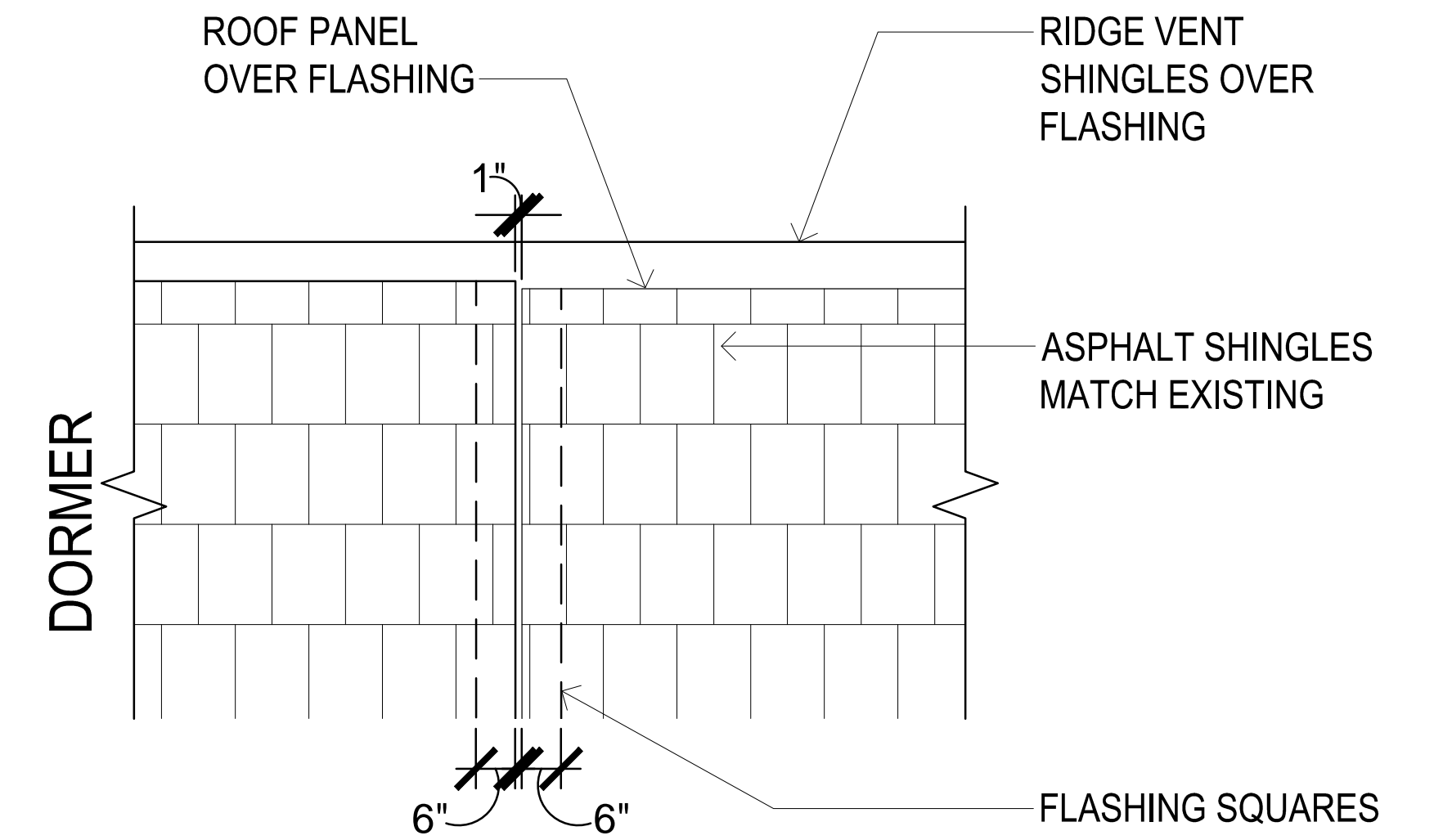
<div>Revisions</div> <table border="1"><tr><td> </td><td> </td></tr><tr><td> </td><td> </td></tr><tr><td> </td><td> </td></tr><tr><td> </td><td> </td></tr></table>									<div>CONSULTANTS</div> <div><div><div>HENRY ADAMS</div><div>Consulting Engineers</div><div>MECHANICAL, ELECTRICAL & PLUMBING ENGINEERS</div><div>MECHANICAL, PLUMBING, ELECTRICAL</div><div>HENRY ADAMS</div><div>600 BALTIMORE AVENUE</div><div>BALTIMORE, MD 21204</div></div><div><div></div><div>ALPHA CORPORATION</div><div>1800 WASHINGTON BOULEVARD</div><div>SUITE 425</div><div>BALTIMORE, MD 21230</div></div><div><div></div><div>KOFFEL ASSOCIATES</div><div>FIRE PROTECTION ENGINEERS</div><div>FIRE PROTECTION</div><div>KOFFEL ASSOCIATES, INC.</div><div>8815 CENTRE PARK DRIVE</div><div>SUITE 200</div><div>COLUMBIA, MD 21045-2107</div></div></div>			<div>ARCHITECTS</div> <div><div></div><div>ERNEST BLAND ASSOCIATES, P.C.</div><div>TECHNICAL FACILITIES DESIGN</div><div>802 SLIGO AVENUE, SILVER SPRING, MARYLAND 20910</div><div>TELEPHONE (301) 589-4811 FAX (301) 589-3810</div></div>	<div>Drawing Title</div> <div>DETAILS</div> <div>Approved: Project Director</div> <div>Not for Construction</div>	<div>Project Title</div> <div>MARTINSBURG TASK 7</div> <div>STEAM UPGRADE FOR</div> <div>200 ROW</div> <div>Location</div> <div>VAMC MARTINSBURG, WV</div> <div>Date</div> <div>MARCH 13, 2015</div> <div>Checked</div> <div>CB</div> <div>Drawn</div> <div>ER</div>	<div>Project Number</div> <div>613-12-106</div> <div>Building Number</div> <div>200 Row</div> <div>Drawing Number</div> <div>AS-501</div>	<div>Department of Veterans Affairs</div> <div></div>



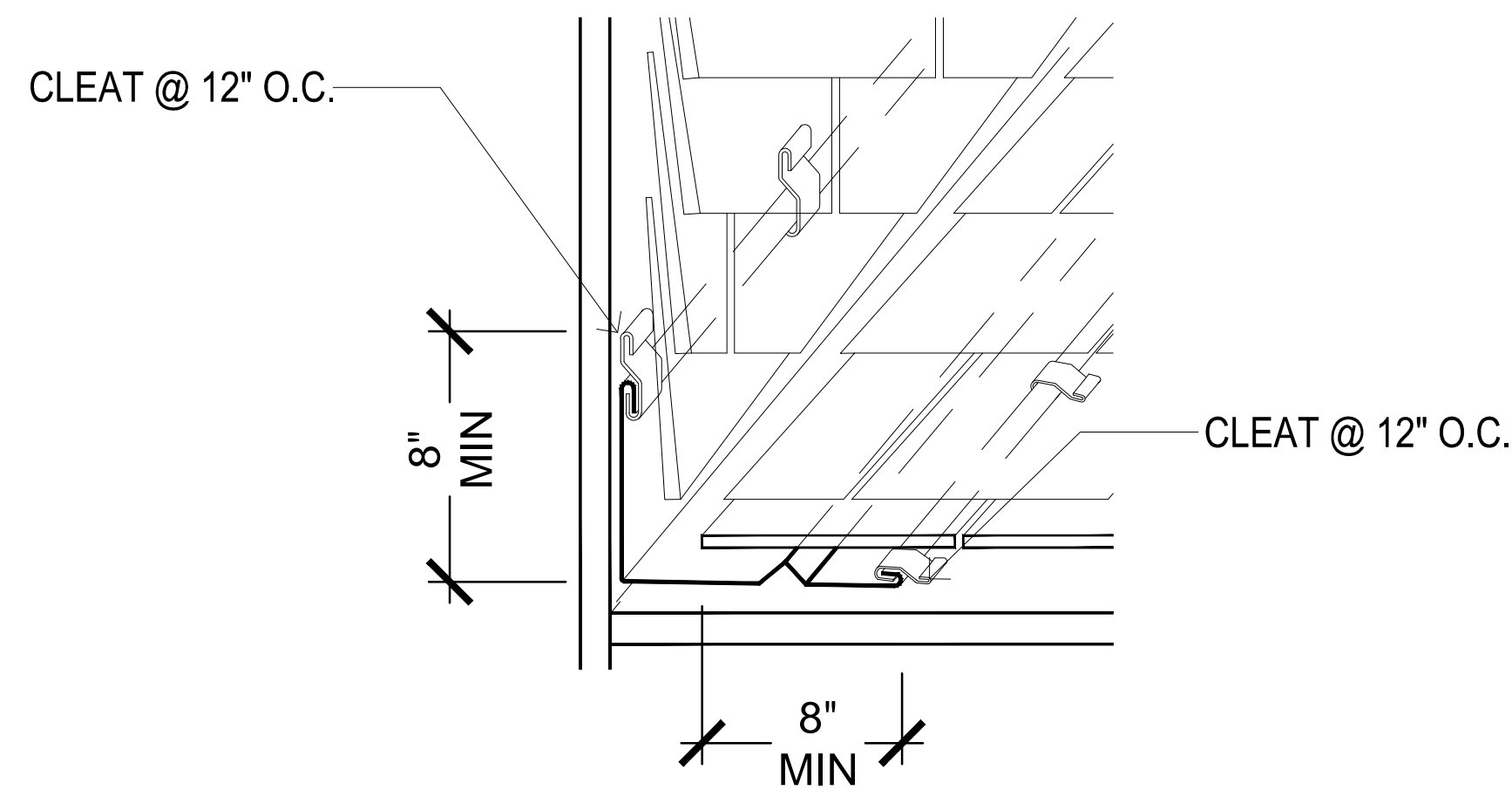
3 Ridge Vent Detail
Scale : 1 1/2" = 1'-0"



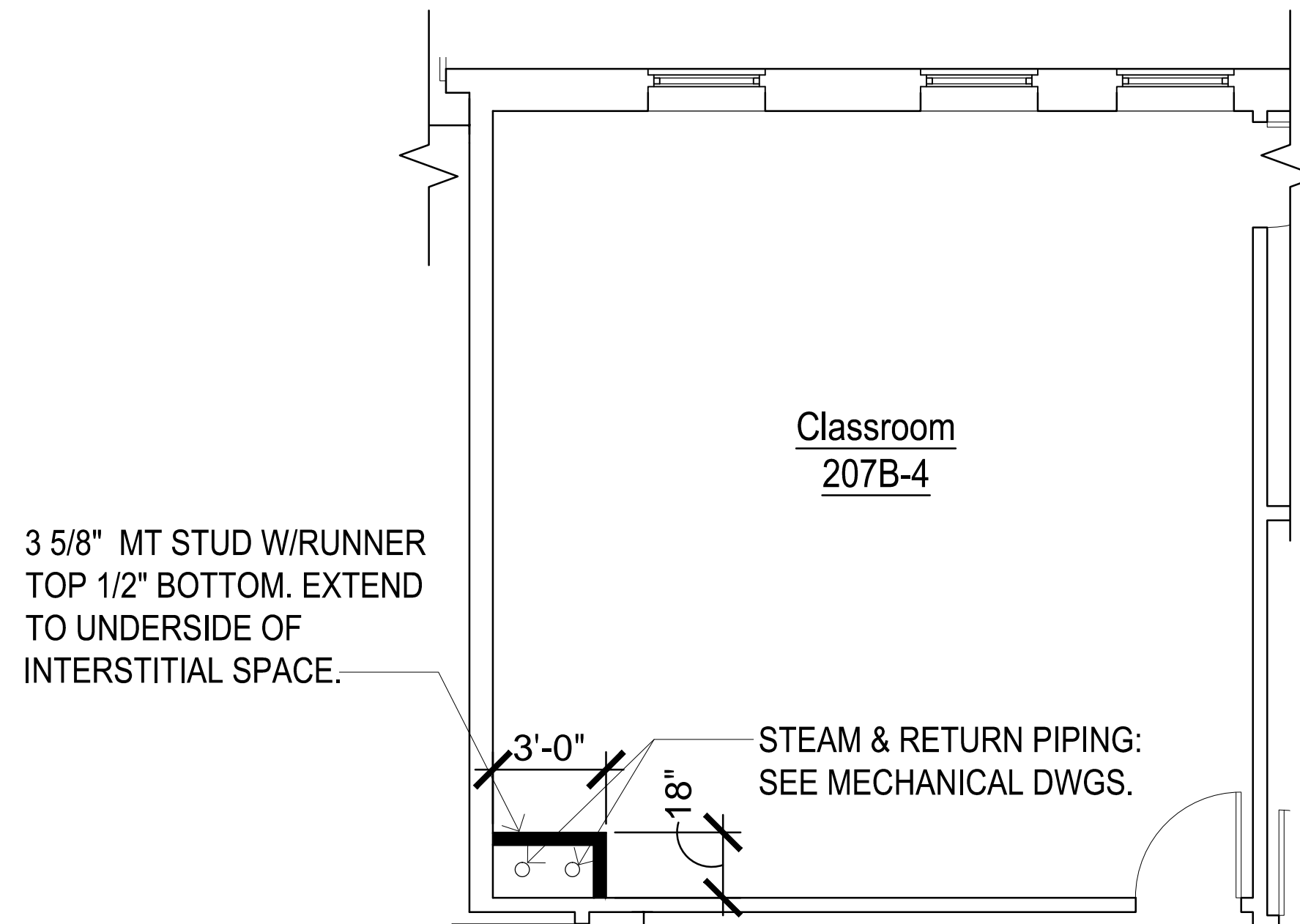
2 Section Thru Temporary Pipe Enclosure
Scale : 1" = 1'-0"



1 DETAIL @ Roof Panel & Dormer
Scale : 1/2" = 1'-0"



4 Dormer Flashing
Scale : 1 1/2" = 1'-0"



5 Interior Chase Enclosure
Scale : 1 1/2" = 1'-0"

Revisions	Date

CONSULTANTS

HENRY ADAMS

Consulting Engineers

MECHANICAL, PLUMBING, ELECTRICAL

HENRY ADAMS
600 BALTIMORE AVENUE
BALTIMORE, MD 21204

STRUCTURAL, CIVIL, COST ESTIMATING

ALPHA CORPORATION
1800 WASHINGTON BOULEVARD
SUITE 425
BALTIMORE, MD 21230

ASSOCIATES
FIRE PROTECTION
ENGINEERS

FIRE PROTECTION
KOFFEL ASSOCIATES, INC.
8815 CENTRE PARK DRIVE
SUITE 200
COLUMBIA, MD 21045-2107

ARCHITECTURAL REGISTRATION BOARD
8006-A
ERNEST BLAND
STATE OF MARYLAND

ARCHITECTS

ERNEST BLAND ASSOCIATES, P.C.
TECHNICAL FACILITIES DESIGN

802 SLIGO AVENUE, SILVER SPRING, MARYLAND 20910
TELEPHONE (301) 589-4811 FAX (301) 589-3810

Drawing Title

DETAILS

Approved: Project Director

Not for Construction

Project Title

MARTINSBURG TASK 7
STEAM UPGRADE FOR
200 ROW

Location

VAMC MARTINSBURG, WV

Date

MARCH 13, 2015

Checked

CB

Drawn

ER

Project Number

613-12-106

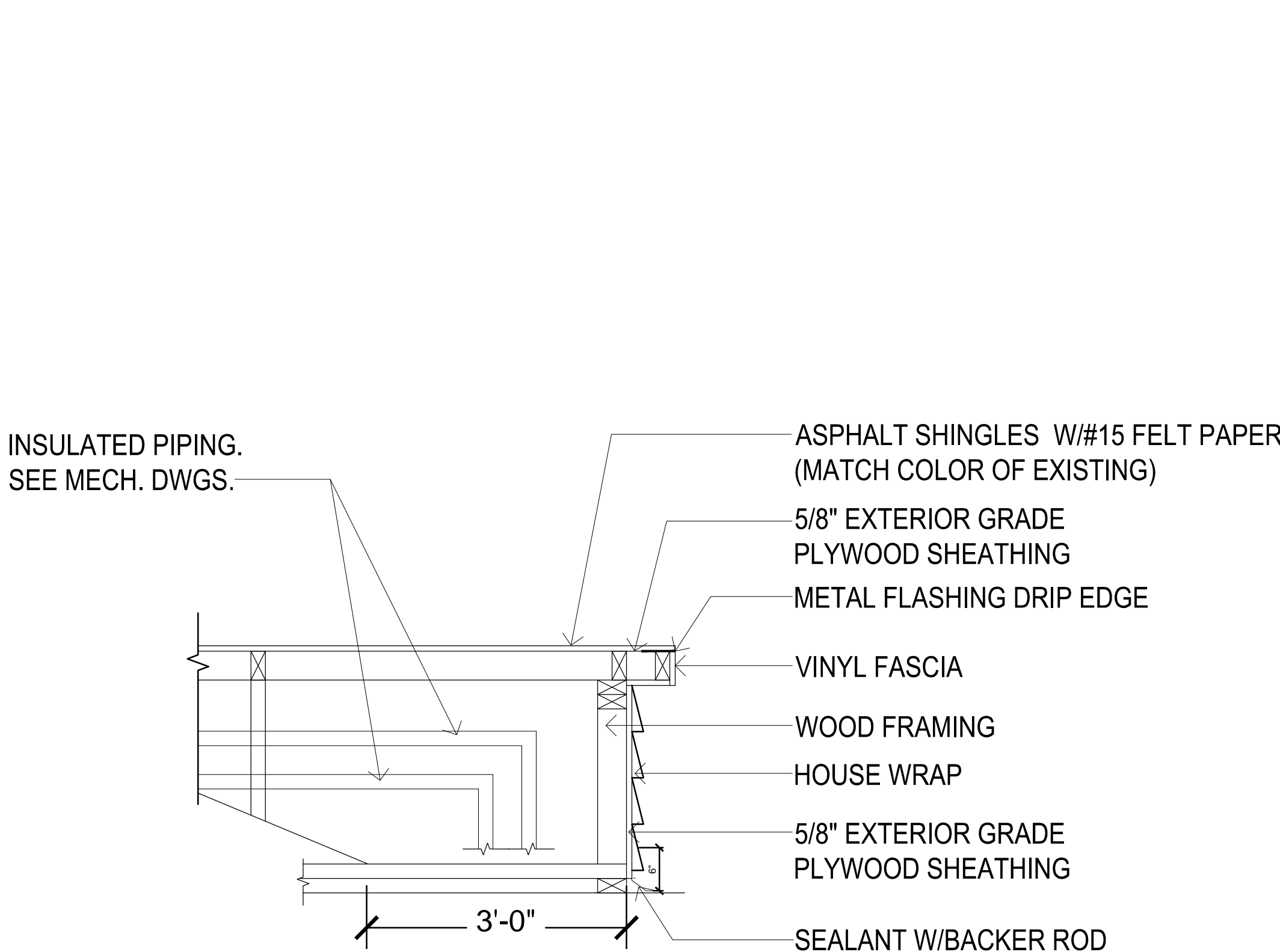
Building Number

200 Row

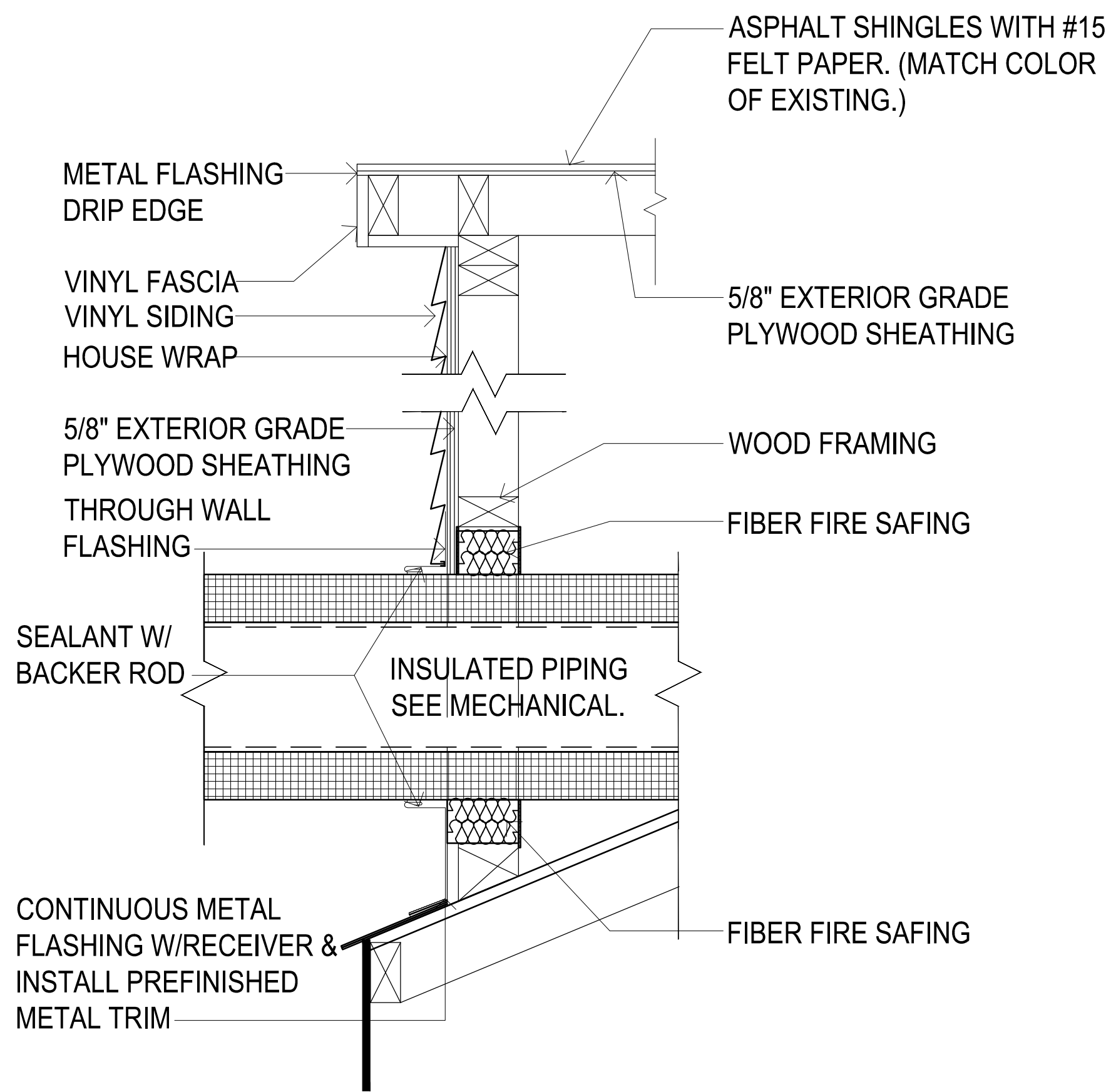
Drawing Number

AS-502

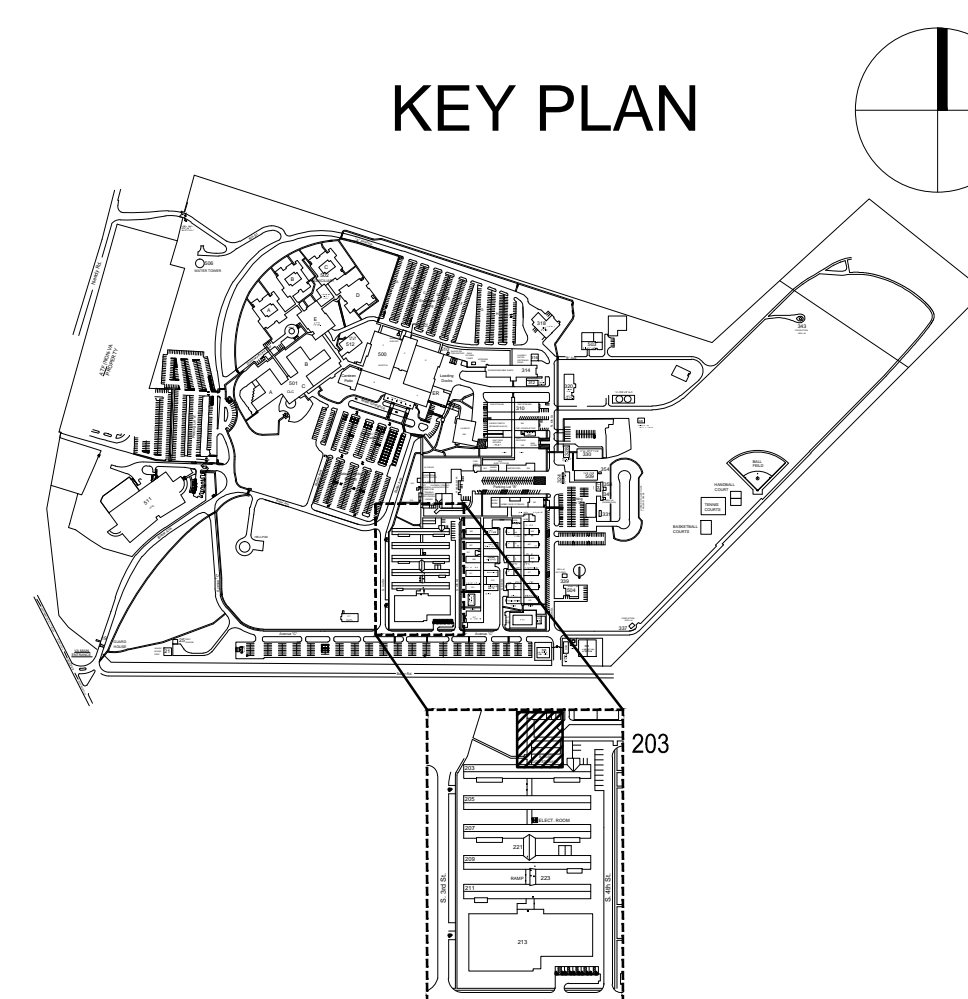
Department
of Veterans
Affairs



1 **DETAIL**
Scale : 3/4" = 1'-0"



2 **Pipe Penetration Detail**
Scale : NTS



BID SUBMISSION

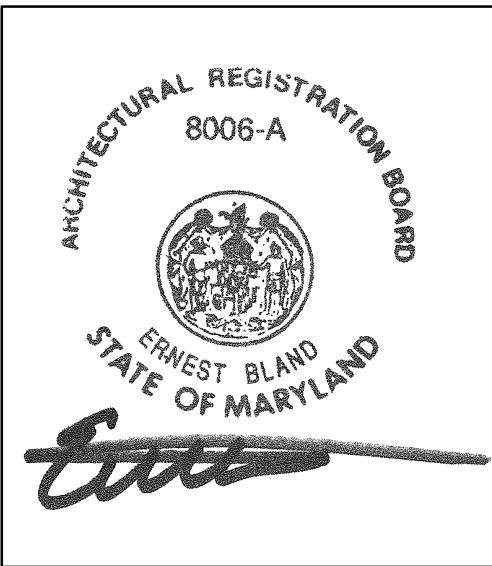
Revisions	Date

CONSULTANTS
HENRY ADAMS
Consulting Engineers

MECHANICAL, ELECTRICAL & PLUMBING ENGINEERS
MECHANICAL, PLUMBING, ELECTRICAL
HENRY ADAMS
600 BALTIMORE AVENUE
BALTIMORE, MD 21204

ALPHA CORPORATION
1800 WASHINGTON BOULEVARD
SUITE 425
BALTIMORE, MD 21230
STRUCTURAL, CIVIL, COST ESTIMATING

KOFFEL ASSOCIATES
FIRE PROTECTION ENGINEERS
FIRE PROTECTION
KOFFEL ASSOCIATES, INC.
8815 CENTRE PARK DRIVE
SUITE 200
COLUMBIA, MD 21045-2107



ARCHITECTS

ERNEST BLAND ASSOCIATES, P.C.
TECHNICAL FACILITIES DESIGN

802 SLIGO AVENUE, SILVER SPRING, MARYLAND 20910
TELEPHONE (301) 589-4811 FAX (301) 589-3810

Drawing Title
DETAILS

Approved: Project Director
Not for Construction

Project Title
**MARTINSBURG TASK 7
STEAM UPGRADE FOR
200 ROW**

Location
VAMC MARTINSBURG, WV

Date
MARCH 13, 2015

Checked
CB

Drawn
ER

Project Number
613-12-106

Building Number
200 Row

Drawing Number
AS-501

**Department
of Veterans
Affairs**