

three inches = one foot
one and one half inches = one foot
one inch = one foot
three quarters inch = one foot
one half inch = one foot
three eighths inch = one foot
one quarter inch = one foot
one eighth inch = one foot

SYMBOLS:

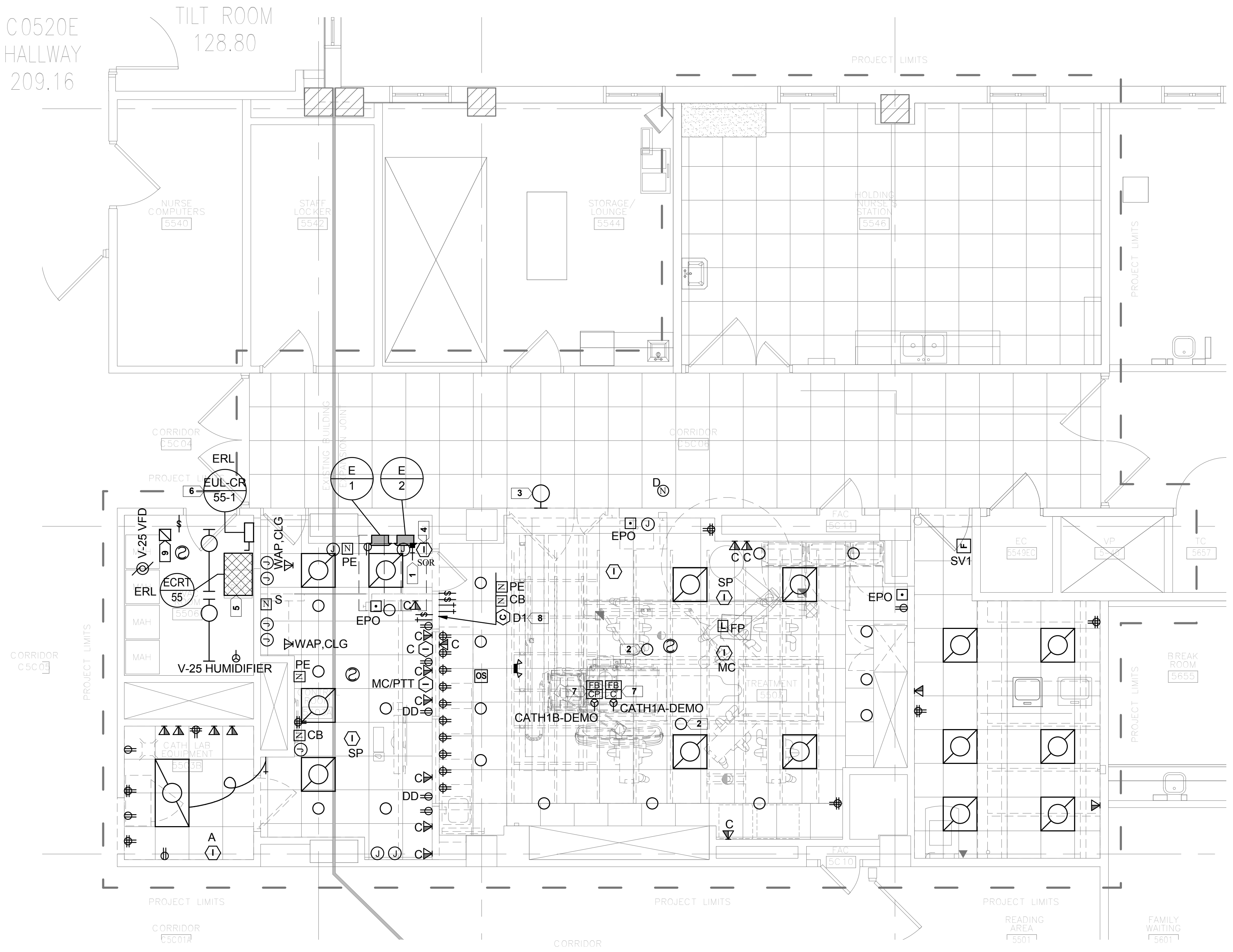
(ALL SYMBOLS SHOWN MAY NOT APPEAR ON DRAWINGS)

- LIGHT FIXTURE RECESSED MOUNTED
- LIGHT FIXTURE SURFACE MOUNTED
- LIGHT FIXTURE, RECESSED FLUORESCENT, 2'x4' LETTER INDICATES TYPE.
- LIGHT FIXTURE, RECESSED FLUORESCENT, 1'x4' LETTER INDICATES TYPE.
- LIGHT FIXTURE, RECESSED FLUORESCENT, 1'x8' LETTER INDICATES TYPE.
- LIGHT FIXTURE, SURFACE MOUNTED FLUORESCENT, 1'x8' LETTER INDICATES TYPE.
- LIGHT FIXTURE, FLUORESCENT EMERGENCY; LETTER INDICATES TYPE.
- LIGHT FIXTURE, RECESSED FLUORESCENT, 2'x2' LETTER INDICATES TYPE.
- LIGHT FIXTURE, STRIP/INDUSTRIAL FLUORESCENT; LETTER INDICATES TYPE.
- LIGHT FIXTURE, WALL MOUNTED
- EMERGENCY BATTERY UNIT
- DLS ○ INDICATES DUAL LEVEL SWITCHING - SEE DUAL LEVEL SWITCHING DETAIL
- SINGLE POLE TOGGLE SWITCH WITH DUPLEX RECEPTACLE COMBINATION
- SURGICAL LIGHT CONTROL
- X ○ OCCUPANCY SENSOR - SEE OCCUPANCY SENSOR SCHEDULE
- X ○ SWITCH STATION - SEE SWITCH STATION SCHEDULE
- X ○ "X" DENOTES SPECIFIC UNIT
- X ○ "X" DENOTES SPECIFIC UNIT
- LIGHTING CONTROL PANEL
- FP ○ LIGHTING CONTROLLER FOOT PEDAL
- DETECTOR; LETTER INDICATES AS FOLLOWS:
(BLANK) SMOKE DETECTOR
(H) HEAT SMOKE
(I) IONIZATION SMOKE
(P) PHOTOELECTRIC SMOKE
(IH) IONIZATION AND HEAT SMOKE
(IP) IONIZATION AND PHOTOELECTRIC SMOKE
(PH) PHOTOELECTRIC AND HEAT SMOKE
(IPH) IONIZATION, PHOTOELECTRIC, AND HEAT
- XXX ○ FIRE ALARM
- DENOTES THE FOLLOWING:
(C) CEILING MOUNTED
(W) WALL MOUNTED
- DENOTES THE FOLLOWING:
(CMX) CONTROL MODULE - SEE CONTROL MODULE SCHEDULE
(X - DENOTES SPECIFIC UNIT)
(MMX) MONITOR MODULE - SEE MONITOR MODULE SCHEDULE
(X - DENOTES SPECIFIC UNIT)
(RE) RE-ENTRANT HORN
(SO) SPEAKER ONLY
(SV1) SPEAKER W/ 15 CANDELA STROBE
(SV2) SPEAKER W/ 30 CANDELA STROBE
(SV3) SPEAKER W/ 75 CANDELA STROBE
(SV4) SPEAKER W/ 110 CANDELA STROBE
- INDICATES QUANTITY OF DEVICES ASSOCIATED WITH UNIT
- (C) CATH
(CP) CATH PEDESTAL
(FB) FLOOR BOX
(PT) POKE-THRU
(DA) DUCT ACTIVATION
(TP) TELEPOWER POLE
- INDICATES TYPE (SEE SPECIFICATION)
- PUSH BUTTON SWITCH
- KEYED NOTE SYMBOL
- XX ○ CLOCK SYSTEM
- DENOTES THE FOLLOWING:
(A1) ANALOG TYPE, 12" DIAMETER ROUND, SINGLE FACED
(A2) ANALOG TYPE, 9" DIAMETER ROUND, SINGLE FACED
(A3) ANALOG TYPE, 12" DIAMETER ROUND, DOUBLE FACED
(A4) ANALOG TYPE, 9" DIAMETER ROUND, DOUBLE FACED
(AT) ANTENNA
(D1) DIGITAL TYPE, SINGLE FACED (HR-MIN-SEC)
(D2) DIGITAL TYPE, SINGLE FACED (HR-MIN)
(ET) ELAPSE TIMER
(EC) ELAPSE TIMER CONTROL
(GPS) GPS CLOCK SYSTEM
(RP) REPEATER
- XX ○ INTERCOM SYSTEM
- DENOTES THE FOLLOWING:
(A) AMPLIFIER
(C) CONTROL STATION
(MC) MICROPHONE
(MC/PT) MICROPHONE/PUSH TO TALK
(MD) MASTER STATION - DESK MOUNTED
(MW) MASTER STATION - WALL MOUNTED
(SD) SLAVE STATION - DESK MOUNTED
(SP) SPEAKER
(SPL) STENTORION TO OR-2 (SALVAGE)
(SW) SLAVE STATION - WALL MOUNTED

- RECEPTACLE, DUPLEX
(IG) ISOLATED GROUND
(TD) TRIPLE DUPLEX
(TR) TAMPER RESISTANCE
(WP) WEATHERPROOF W/ GFI RECEPTACLE
- RECEPTACLE, DUPLEX WITH SWITCH
- RECEPTACLE, DUPLEX ON EMERGENCY POWER
- RECEPTACLE, DUPLEX WITH GROUND FAULT CIRCUIT INTERRUPTER
- RECEPTACLE, QUADRAPLEX
- RECEPTACLE, SINGLE
- RECEPTACLE, SINGLE WITH SWITCH
- DUPLEX RECEPTACLE - MOUNTED 6" ABOVE COUNTER BACKSPLASH
- 46" ○ DUPLEX RECEPTACLE - MOUNTED AT SPECIAL MOUNTING HEIGHT INDICATED ON DRAWING OR AS INDICATED IN THE ASSOCIATED ARCHITECTURAL ELEVATION.
- INDICATES MOUNTING HEIGHT WHEN SHOWN.
- DD ○ QUADRUPLX RECEPTACLE - MOUNTED 6" ABOVE COUNTER BACKSPLASH
- DD ○ QUADRUPLX RECEPTACLE - MOUNTED AT SPECIAL MOUNTING HEIGHT INDICATED ON DRAWING OR AS INDICATED IN THE ASSOCIATED ARCHITECTURAL ELEVATION.
- INDICATES MOUNTING HEIGHT WHEN SHOWN.
- RECEPTACLE, SPECIAL PURPOSE OR EQUIPMENT CONNECTION - SEE EQUIPMENT SCHEDULE
- ELECTRIC SWITCH - SEE EQUIPMENT SCHEDULE
- MOTOR, SINGLE-PHASE
- MOTOR, THREE-PHASE
- T ○ TRANSFORMER
- JUNCTION BOX
- PANELBOARD CABINET, SURFACE MOUNTED
- INDICATES DESIGNATION
- PANELBOARD CABINET, FLUSH MOUNTED
- INDICATES DESIGNATION
- 46" ○ OUTLET, COMBINATION TELEPHONE/DATA COMMUNICATION
- INDICATES OUTLET CONFIGURATION - SEE THE TELECOMMUNICATIONS HORIZONTAL CABLING SCHEDULE FOR ADDITIONAL INFORMATION.
- INDICATES OUTLET MOUNTING HEIGHT.
(C) MOUNTED ABOVE COUNTER
(D) DESK TYPE (STANDARD MOUNTING HEIGHT)
(F) FLOOR (SEE POWER PLAN FOR FLOOR BOX OR POKE THRU LOCATION)
(M) MOUNTED IN MULTI-OUTLET ASSEMBLY SHOWN ON POWER PLAN
(S) SPECIAL MOUNTING HEIGHT EITHER INDICATED ON THE DRAWINGS OR AS INDICATED IN THE ASSOCIATED ARCHITECTURAL ELEVATIONS.
(T) TELEPOWER POLE (SEE POWER PLAN FOR TELEPOWER POLE LOCATION)
(W) WALL MOUNTED
- INDICATES MOUNTING HEIGHT WHEN SHOWN.
- FLOOR RECEPTACLE, TELEPHONE
- 46" ○ OUTLET TELEPHONE; LETTER INDICATES AS FOLLOWS:
(C) MOUNTED ABOVE COUNTER
(D) DESK TYPE (STANDARD MOUNTING HEIGHT)
(J) JACK TYPE
(M) MOUNTED IN MULTI-OUTLET ASSEMBLY SHOWN ON POWER PLAN
(S) SPECIAL MOUNTING HEIGHT EITHER INDICATED ON THE DRAWINGS OR AS INDICATED IN THE ASSOCIATED ARCHITECTURAL ELEVATIONS.
(W) WALL MOUNTED
- INDICATES MOUNTING HEIGHT WHEN SHOWN.
- 46" ○ OUTLET DATA ONLY
- INDICATES OUTLET CONFIGURATION - SEE THE TELECOMMUNICATIONS HORIZONTAL CABLING SCHEDULE FOR ADDITIONAL INFORMATION.
- INDICATES OUTLET MOUNTING HEIGHT.
(C) MOUNTED ABOVE COUNTER
(D) DESK TYPE (STANDARD MOUNTING HEIGHT)
(J) JACK TYPE
(M) MOUNTED IN MULTI-OUTLET ASSEMBLY SHOWN ON POWER PLAN
(S) SPECIAL MOUNTING HEIGHT EITHER INDICATED ON THE DRAWINGS OR AS INDICATED IN THE ASSOCIATED ARCHITECTURAL ELEVATIONS.
(W) WALL MOUNTED
- INDICATES MOUNTING HEIGHT WHEN SHOWN.
- XX ○ NURSE CALL STATION
- DENOTES THE FOLLOWING:
(1) SINGLE PATIENT STATION
(B) BED INTERFACE STATION
(CB) CODE BLUE STATION
(D) DUTY STATION
(E) EMERGENCY SHOWER, TUB, OR TOILET LOCATION
(H) ENHANCED DUTY STATION
(PE) PUSH-FOR-HELP STATION (EMERGENCY)
(S) STAFF TERMINAL
- XX ○ NURSE CALL STATION DOME LIGHTS
- DENOTES THE FOLLOWING:
(2) NURSE'S CALL DOME LIGHT (SUFFIX INDICATES No OF LAMP).
(D) CORRIDOR DOME LIGHT.
(I) AUXILIARY INTERSECTIONAL DOME LIGHT.

C0520E
HALLWAY
209.16

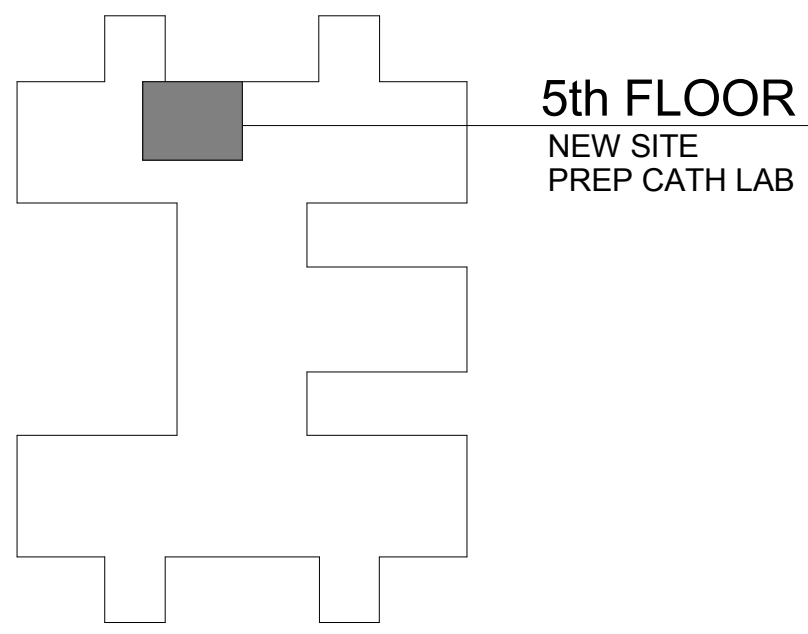
TILT ROOM
128.80



1 FIFTH FLOOR PLAN - DEMOLITION
ED205 1/4" = 1'-0"



- KEYED NOTES -**
- SKYTRON CONTROLLER
 - SKYTRON EXAM LIGHT. SALVAGE AND TURN OVER TO OWNER.
 - IN-USE LIGHT.
 - REMOVE, PRESERVE, CLEAN, REPLACE IN SAME LOCATION
 - DISCONNECT AND TEMPORARILY REMOVE EXISTING TRANSFORMER AND ANY ASSOCIATED WIRING AND CONDUIT TO ACCOMMODATE DEMOLITION AND NEW CONSTRUCTION OF ADJACENT WALL. STORE IN AREA DIRECTED BY GENERAL CONTRACTOR AND COR.
 - DISCONNECT AND TEMPORARILY REMOVE EXISTING DISCONNECT SWITCH AND ANY ASSOCIATED WIRING AND CONDUIT FROM WALL TO ACCOMMODATE DEMOLITION AND NEW CONSTRUCTION OF ADJACENT WALL. STORE IN AREA DIRECTED BY GENERAL CONTRACTOR AND COR.
 - ELECTRICAL FLOOR BOX MOUNTED UNDER SIEMENS TABLE.
 - EXISTING CLOCK TO BE RELOCATED. REFER TO ELP205 FOR NEW LOCATION.
 - EXISTING COMBINATION STARTER SERVING EXISTING EXHAUST FAN EF-1 CATH. DISCONNECT EXISTING STARTER AND REMOVE.
- SHEET NOTES -**
- ALL EQUIPMENT SHOWN ON DEMOLITION PLAN SHALL BE REMOVED, UNLESS INDICATED OTHERWISE.
 - EC SHALL VERIFY EXISTING CONDITIONS AND IS RESPONSIBLE FOR ANY ADDITIONAL REMOVING, RELOCATING AND EXTENDING CIRCUITS AND DEVICES NECESSARY TO ACCOMMODATE THE PROPOSED CONSTRUCTION. EC SHALL FIELD VERIFY EXACT DEMOLITION REQUIREMENTS AND INCLUDE ALL ASSOCIATED COSTS. ALL ABANDONED WIRING, CABLE CONDUITS, FITTINGS, BOXES, SUPPORTS, ETC. SHALL BE REMOVED FROM THE DEVICE BACK TO THE SOURCE. UPDATE PANEL DIRECTORIES. REFER TO THE SPECIFICATIONS FOR THE EXACT ADDITIONAL ELECTRICAL DEMOLITION REQUIREMENTS.
 - DASHED WALLS ON THIS PLAN INDICATE IN GENERAL EXISTING WALLS BEING DEMOLISHED. DO NOT RELY ON ELECTRICAL DRAWINGS TO DETERMINE EXTENT OF GENERAL CONSTRUCTION DEMOLITION. REFER TO ARCHITECTURAL DEMOLITION PLANS FOR THE EXACT EXTENT OF GENERAL CONSTRUCTION DEMOLITION REQUIRED BY THIS CONTRACT.
 - EC SHALL PROPERLY REMOVE, CLEAN, RELAMP, RELOCATE, AND REINSTALL REUSED FIXTURES. FIXTURES THAT MAY BE RE-USED ARE INDICATED ON SHEETS ELP205 AND E600. FIXTURES MUST BE IN WORKING CONDITION IN ORDER TO REUSE. IF A REUSED FIXTURE IS NOT IN WORKING CONDITION, EC SHALL NOTIFY THE VA PROJECT MANAGER (PRIOR TO REMOVAL OF FIXTURE)
 - REFER TO DEMOLITION DRAWINGS OF OTHER TRADES, WHERE MOTORS, CONTROL PANELS, AND OTHER LOADS THAT HAVE AN ELECTRICAL CONNECTION ARE BEING REMOVED, INCLUDE THE DISCONNECTION AND REMOVAL OF ASSOCIATED ELECTRICAL FEEDS, CIRCUITS, AND LOOSE CONTROL EQUIPMENT IN THIS CONTRACT.
 - SEE ARCHITECTURAL DEMOLITION PLANS FOR PHASING, TEMPORARY CONSTRUCTION PARTITION LOCATIONS AND LIMITATIONS ON HOURS OF WORK AND DEMOLITION METHODS PER THE OWNER.
 - ANY SERVICES PASSING THROUGH AREA OF WORK SHALL BE MAINTAINED AND PROTECTED DURING DEMOLITION AND CONSTRUCTION.
 - SEE ARCHITECTURAL SHEETS A001 FOR PROJECT PHASING DRAWINGS AND NOTES.
 - PRIOR TO CORING OR CUTTING CONCRETE SLAB, X-RAY SLAB TO DETERMINE EXISTING CONDUIT PLACEMENT WITHIN THE SLAB.
 - SYMBOLS LIST MAY NOT INCLUDE ALL SYMBOLS INDICATED ON THIS SHEET. FOR A COMPLETE LIST OF SYMBOLS, PLEASE REFERENCE SHEET E000.
 - REFER TO ED105.1 AND ED105.2 FOR ADDITIONAL DEMOLITION SCOPE.
 - FOR ANY WORK TO BE COMPLETED ON THE 4TH FLOOR, THE FOLLOWING SHALL APPLY: ACCESS TO 4TH FLOOR WOULD BE 7PM TO 7AM AND ONLY ONE TEAM ROOM PER NIGHT.



PROJECT KEY PLAN: ➡

100% CONSTRUCTION DOCUMENTS

 Dept. of Veterans Affairs Medical Center 5000 W. National Avenue Milwaukee, WI		CONSULTANTS: Single Source. Sound Solutions. www.thesigmagroup.com 1300 West Canal Street Milwaukee, WI 53233 Phone: 414-643-4200 Fax: 414-643-4210	 17400 W. Capitol Drive Brookfield, WI 53005 Phone: 414-778-1700 Fax: 414-778-2360 r-d@ringdu.com THIS BAR IS 1" LONG IF IT MEASURES ANYTHING OTHER THAN 1" ADJUST SCALE ACCORDINGLY. R&D Project No. 214146	PROJECT LEADER/ARCHITECT: CHEQUAMEGON BAY ENGINEERING, INC.	Drawing Title BUILDING 111 - FIFTH FLOOR PLAN - ELECTRICAL DEMOLITION	Project Title Building 111 - Site Prep Cath Lab	Location VA Medical Center, Milwaukee, WI	Date 30 March 2015	Checked By: MIKE MCGANN PE	Drawn By: RD	Project Number 695-14-112	Office of Facilities Management Department of Veterans Affairs
											Building Number 111	
Revisions: _____ Date: _____												



three inches = one foot

one and one half inches = one foot

one inch = one foot

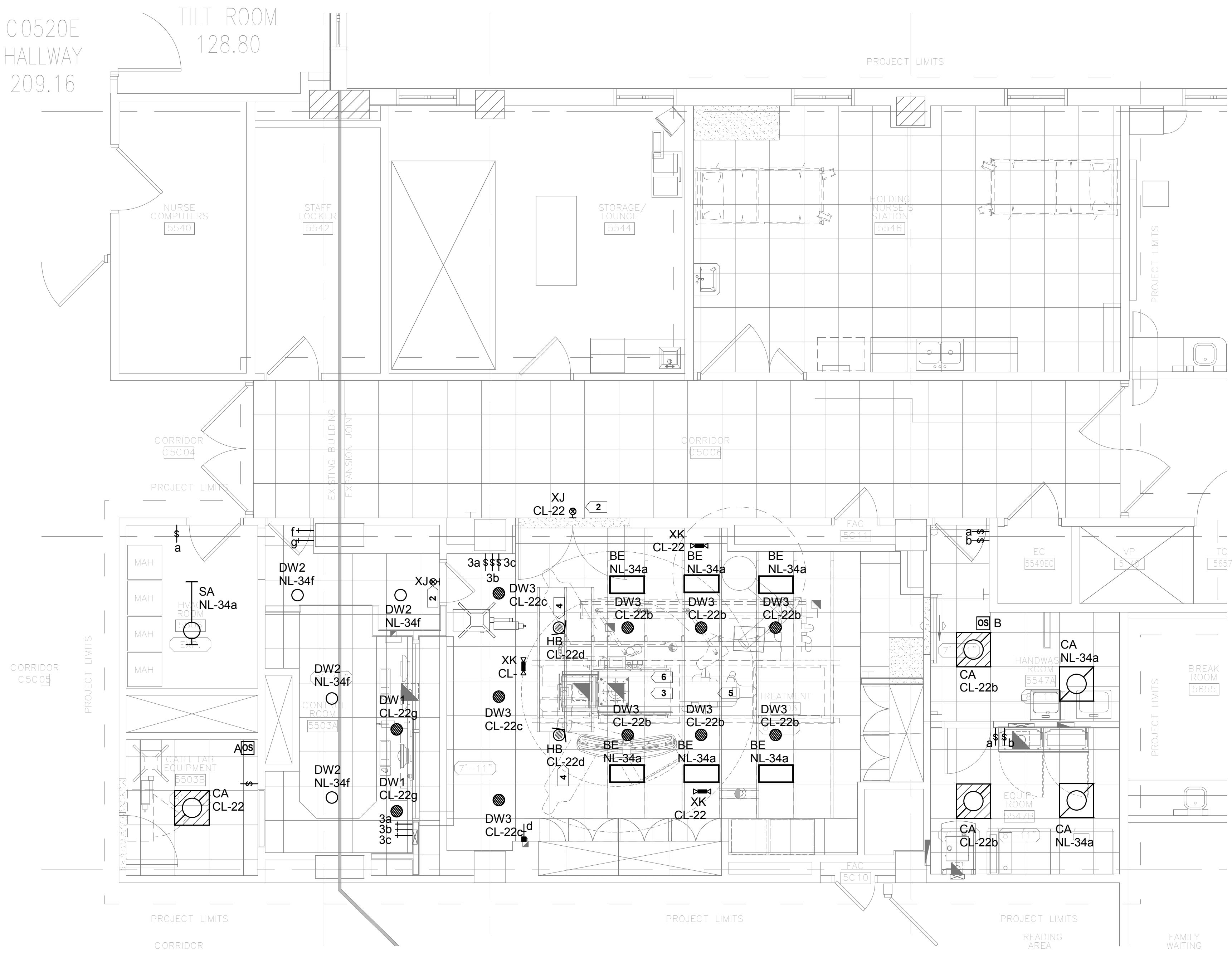
three quarters inch = one foot

one half inch = one foot

three eighths inch = one foot

one quarter inch = one foot

one eighth inch = one foot



1
EL205 / 1/4" = 1'-0"

FIFTH FLOOR PLAN - LIGHTING

NORTH

KEYED NOTES -

- NOT USED.
- IN-USE SIGN CONTROL SHALL BE INTERFACED WITH THE ROOM EQUIPMENT.
- FIXTURE TYPE "BE" SHALL TURN OFF WHEN EQUIPMENT FOOT PEDAL IS ACTIVATED. E.G. TO PROVIDE THREE (3) RELAYS TO CONTROL LIGHTING IN TREATMENT ROOM. INTEGRATE LIGHTING CONTROL TO FOOT PEDAL. CONFIRM EXACT FIXTURES TO BE CONTROLLED WITH OWNER PRIOR TO COMMENSING INSTALLATION.
- COORDINATE LOCATION WITH VA COR AND ARCHITECT.
- REFER TO SHEETS E510, E511, AND E512 FOR ANY ADDITIONAL WORK ASSOCIATED WITH THE CATH LAB EQUIPMENT BEING INSTALLED, INCLUDING BUT NOT LIMITED TO DUCTS, JUNCTION BOXES, CONDUITS, CIRCUIT BREAKERS, CONDUCTORS, LIGHTS, AND SWITCHES. ELECTRICAL WORK REQUIRED BY THESE DRAWINGS SHALL BE INCLUDED AS PART OF THE ELECTRICAL CONTRACTOR'S WORKS.
- REFER TO DETAIL 4/E500 FOR ANY PENETRATIONS INTO EXISTING LEAD-LINED WALL.

SHEET NOTES -

- THE CIRCUITS IN THIS AREA SHALL BE FED FROM THE FOLLOWING PANEL BOARDS:
 - NORMAL POWER BRANCH CIRCUIT 'NL' IS 208/120V AND SHALL BE FED FROM PANEL UL-55-2, UNLESS NOTED OTHERWISE.
 - CRITICAL POWER BRANCH CIRCUIT 'CL' IS 208/120V AND SHALL BE FED FROM PANEL EUL-CR-55-1, UNLESS NOTED OTHERWISE.
- EC SHALL REFER TO ARCHITECTURAL FLOOR PLANS, REFLECTED CEILING PLANS AND ELEVATIONS FOR EXACT LOCATIONS AND MOUNTING HEIGHTS.
- CIRCUIT NUMBERS INDICATED DO NOT REFLECT THE ACTUAL POSITION OF THE CIRCUIT BREAKER IN THE PANEL. RATHER, THE NUMBER INDICATES WHICH DEVICES ARE CONNECTED TO A COMMON CIRCUIT. EC SHALL UTILIZED SPARES, SPACES AND CIRCUITS RELIEVED FROM DUTY TO PROVIDE THE INDICATED NUMBER OF CIRCUITS.
- EXISTING TO REMAIN, "ETR". ON THIS PLAN REFERS TO THE STATUS OF BASIC ELECTRICAL DEVICES. THERE MAY BE SOME WORK REQUIRED IN THESE SPACES INVOLVING BACK-FEEDING EXISTING CIRCUITS OR OTHER MODIFICATIONS. SEE ALL DOCUMENTS THAT MAKE UP THIS CONTRACT FOR THE TOTAL EXTENT OF WORK REQUIRED IN ALL SPACES.
- FIELD COORDINATE EXACT HEIGHT AND LOCATION OF LIGHT FIXTURES IN MECHANICAL, TELE/DATA, AND ELECTRICAL ROOMS TO AVOID CONFLICT WITH MECHANICAL EQUIPMENT, DUCT WORK, PIPES, AND STRUCTURAL MEMBERS. FIXTURES SHALL BE CHAIN HUNG AND SUPPORTED FROM THE EXPOSED CEILING. DUCT WORK AND UTILITY PIPING SHALL NOT BE USED FOR SUPPORT. ANY CONFLICT SHALL BE BROUGHT TO THE ATTENTION OF THE ARCHITECT/OWNER.

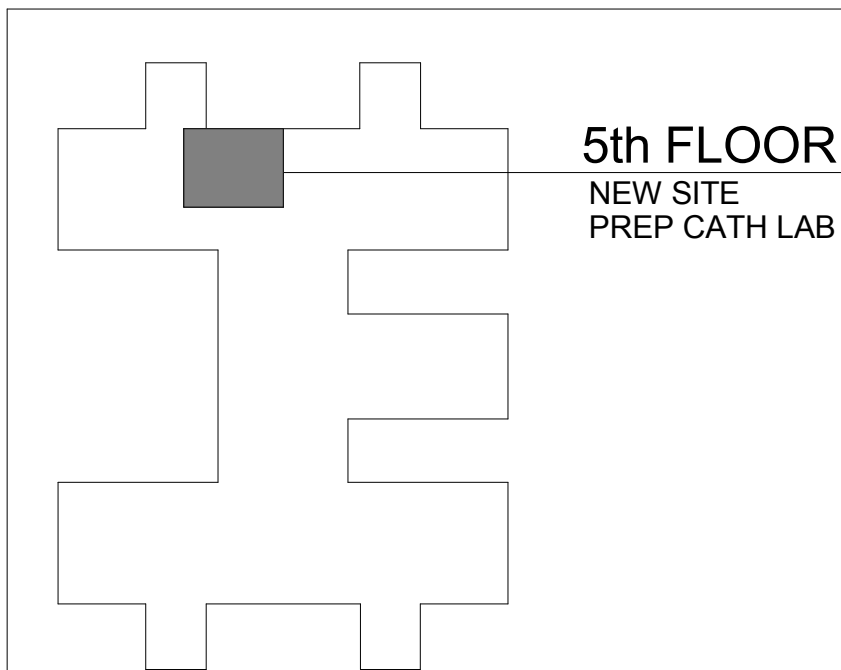
SHEET NOTES -

- PRIOR TO CORING OR CUTTING CONCRETE SLAB, X-RAY SLAB TO DETERMINE EXISTING CONDUIT PLACEMENT WITHIN THE SLAB.
- SEE SHEET A001 FOR PROJECT PHASING DRAWINGS AND NOTES.
- SYMBOLS LIST MAY NOT INCLUDE ALL SYMBOLS INDICATED ON THIS SHEET. FOR A COMPLETE LIST OF SYMBOLS, PLEASE REFERENCE SHEET E000.
- CORE AND X-RAY BY EC.
- FOR ANY WORK TO BE COMPLETED ON THE 4TH FLOOR, THE FOLLOWING SHALL APPLY: ACCESS TO 4TH FLOOR WOULD BE 7PM TO 7AM AND ONLY ONE TEAM ROOM PER NIGHT.

SYMBOLS:

(ALL SYMBOLS SHOWN MAY NOT APPEAR ON DRAWINGS)

- LIGHT FIXTURE RECESSED MOUNTED
- LIGHT FIXTURE SURFACE MOUNTED
- LIGHT FIXTURE, RECESSED FLUORESCENT, 2'x4' LETTER INDICATES TYPE.
- LIGHT FIXTURE, RECESSED FLUORESCENT, 1'x4' LETTER INDICATES TYPE.
- LIGHT FIXTURE, RECESSED FLUORESCENT, 1'x8' LETTER INDICATES TYPE.
- LIGHT FIXTURE, SURFACE MOUNTED FLUORESCENT, 2'x4' LETTER INDICATES TYPE.
- LIGHT FIXTURE, SURFACE MOUNTED FLUORESCENT, 1'x4' LETTER INDICATES TYPE.
- LIGHT FIXTURE, SURFACE MOUNTED FLUORESCENT, 1'x8' LETTER INDICATES TYPE.
- LIGHT FIXTURE, FLUORESCENT EMERGENCY; LETTER INDICATES TYPE.
- LIGHT FIXTURE, RECESSED FLUORESCENT, 2'x2' LETTER INDICATES TYPE.
- LIGHT FIXTURE, SURFACE MOUNTED FLUORESCENT, 2'x2' LETTER INDICATES TYPE.
- LIGHT FIXTURE, UNDER CABINET MOUNTED FLUORESCENT, SIZE DEPENDANT ON TYPE, LETTER INDICATES TYPE.
- LIGHT FIXTURE, STRIP/INDUSTRIAL FLUORESCENT; LETTER INDICATES TYPE.
- LIGHT FIXTURE, WALL MOUNTED
- LIGHT TRACK
- OUTDOOR POLE MOUNTED FIXTURE - SEE LIGHTING POLE AND FIXTURE SCHEDULE
- EMERGENCY BATTERY UNIT
- CEILING MOUNTED EMERGENCY BATTERY UNIT
- REMOTE HEAD
- EXIT LIGHT - CEILING MOUNTED
- EXIT LIGHT - WALL MOUNTED
- SINGLE POLE SWITCH - TOGGLE TYPE
- SWITCH DESIGNATION
 - SWITCH TYPE
 - (2) DOUBLE POLE
 - (3) 3 WAY
 - (4) 4 WAY
 - (K) KEY OPERATED
 - (P) WITH PILOT LIGHT INDICATION
 - (T) TIMER SWITCH
 - (D) DIMMER
- DLS INDICATES DUAL LEVEL SWITCHING - SEE DUAL LEVEL SWITCHING DETAIL
- SINGLE POLE TOGGLE SWITCH WITH DUPLEX RECEPTACLE COMBINATION
- SURGICAL LIGHT CONTROL
- MOMENTARY CONTACT SWITCH
- LOW VOLTAGE SWITCH STATION - SEE LOW VOLTAGE SWITCHING STATION SCHEDULE
 - "X" DENOTES SPECIFIC UNIT
- DIMMING SYSTEM CONTROL STATION - SEE DIMMING SYSTEM SCHEDULE
- TIME CLOCK - SEE TIME CLOCK SCHEDULE
- CONTACTOR - SEE CONTACTOR SCHEDULE
- PHOTO-CELL
- DAYLIGHT SENSOR
- OCCUPANCY SENSOR - SEE OCCUPANCY SENSOR SCHEDULE
 - "X" DENOTES SPECIFIC TYPE
- SWITCH STATION - SEE SWITCH STATION SCHEDULE
 - "X" DENOTES SPECIFIC UNIT
- LIGHTING CONTROL PANEL
- LIGHTING CONTROLLER FOOT PEDAL
- KEYED NOTE SYMBOL



PROJECT KEY PLAN:

100% CONSTRUCTION DOCUMENTS

Revisions:	Date	 <div>Dept. of Veterans Affairs Medical Center 5000 W. National Avenue Milwaukee, WI</div>		CONSULTANTS:  <div>Single Source. Sound Solutions. GROUP</div> <div>www.thesigmagroup.com 1300 West Canal Street Milwaukee, WI 53233 Phone: 414-643-4200 Fax: 414-643-4210</div>	 <div>17400 W. Capital Drive Brookfield, WI 53045 Phone: 414-778-1700 / Fax: 414-778-2360 / r.d@ringdu.com</div> <div>THIS BAR IS 1" LONG</div> <div>IF IT MEASURES ANYTHING OTHER THAN 1" ADJUST SCALE ACCORDINGLY. R&D Project No. 214146</div>	PROJECT LEADER/ARCHITECT:  <div>CHEQUAMEGON BAY ENGINEERING, INC.</div> <div>455-AND-VI 271 6th Street West Aurora, WI 54008 Phone: (715) 882-8834 Fax: (715) 882-8025</div> <div>MILWAUKEE, WI 301 N. Walker Road Suite 100 Milwaukee, WI 53205 Phone: (414) 258-0504 Fax: (414) 258-0154</div>	Drawing Title BUILDING 111 - FIFTH FLOOR PLAN - LIGHTING	Project Title Building 111 - Site Prep Cath Lab		Project Number 695-14-112	Office of Facilities Management  Department of Veterans Affairs
							Approved: Project Director	Location VA Medical Center, Milwaukee, WI	Building Number 111	Drawing Number EL205	

three inches = one foot

one and one half inches = one foot

one inch = one foot

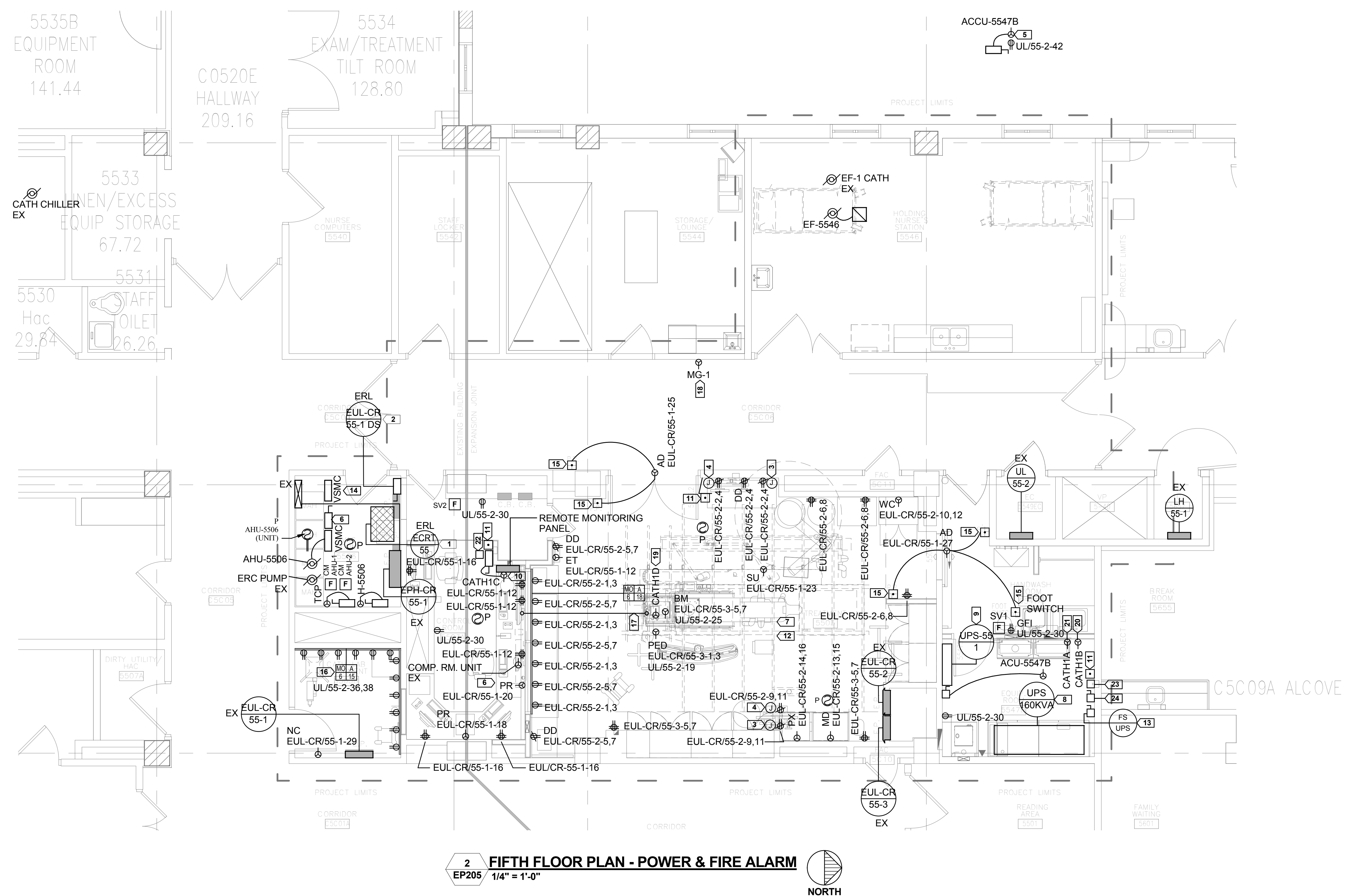
three quarters inch = one foot

one half inch = one foot

three eighths inch = one foot

one quarter inch = one foot

one eighth inch = one foot



SYMBOLS:
(ALL SYMBOLS SHOWN MAY NOT APPEAR ON DRAWINGS)

RECEPTACLE, DUPLEX
(IG) ISOLATED GROUND
(TD) TRIPLE DUPLEX
(TR) TAMPER RESISTANCE
(WFP) WEATHERPROOF W/ GFI RECEPTACLE

RECEPTACLE, DUPLEX WITH SWITCH
 RECEPTACLE, DUPLEX ON EMERGENCY POWER
 RECEPTACLE, DUPLEX WITH GROUND FAULT CIRCUIT INTERRUPTER
 RECEPTACLE, QUADRUPLEX
 RECEPTACLE, SINGLE
 RECEPTACLE, SINGLE WITH SWITCH
 DUPLEX RECEPTACLE - MOUNTED 6" ABOVE COUNTER BACKSPLASH
 DUPLEX RECEPTACLE - MOUNTED AT SPECIAL MOUNTING HEIGHT INDICATED ON DRAWING OR AS INDICATED IN THE ASSOCIATED ARCHITECTURAL ELEVATION.
 INDICATES MOUNTING HEIGHT WHEN SHOWN.
 QUADRUPLEX RECEPTACLE - MOUNTED 6" ABOVE COUNTER BACKSPLASH
 QUADRUPLEX RECEPTACLE - MOUNTED AT SPECIAL MOUNTING HEIGHT INDICATED ON DRAWING OR AS INDICATED IN THE ASSOCIATED ARCHITECTURAL ELEVATION.
 INDICATES MOUNTING HEIGHT WHEN SHOWN.

RECEPTACLE, SPECIAL PURPOSE OR EQUIPMENT CONNECTION - SEE EQUIPMENT SCHEDULE
 DISCONNECT SWITCH
 MOTOR STARTER - SEE EQUIPMENT SCHEDULE
 VARIABLE FREQUENCY DRIVE
 ELECTRIC SWITCH - SEE EQUIPMENT SCHEDULE
 MOTOR, SINGLE-PHASE
 MOTOR, THREE-PHASE
 TRANSFORMER
 JUNCTION BOX
 METER SOCKET
 PANELBOARD CABINET, SURFACE MOUNTED
 INDICATES DESIGNATION
 PANELBOARD CABINET, FLUSH MOUNTED
 INDICATES DESIGNATION
 MULTI-OUTLET ASSEMBLY (SEE DETAIL)
 NUMBER OF CONDUCTORS IN A RACEWAY
 INDICATES CONDUCTOR SIZE (WHEN SHOWN) FOR PHASE AND NEUTRAL CONDUCTORS
 INDICATES NUMBER OF PHASE CONDUCTORS
 INDICATES NEUTRAL CONDUCTOR
 INDICATES GREEN GROUND CONDUCTOR (NUMBER INDICATES CONDUCTOR SIZE)
 PUSH BUTTON SWITCH
 INDICATES DETAIL DESIGNATION
 SEE DETAIL SYMBOL
 INDICATES SHEET NUMBER
 KEYED NOTE SYMBOL

SHEET NOTES -

1. THE CIRCUITS IN THIS AREA SHALL BE FED FROM THE FOLLOWING PANEL BOARDS:
- NORMAL POWER BRANCH CIRCUIT 'NL' IS 208/120V AND SHALL BE FED FROM PANEL UL-55-2, UNLESS NOTED OTHERWISE.
- CRITICAL POWER BRANCH CIRCUIT 'CL' IS 208/120V AND SHALL BE FED FROM PANEL EUL-CR-55-1, UNLESS NOTED OTHERWISE.
2. EC SHALL REFER TO ARCHITECTURAL FLOOR PLANS, REFLECTED CEILING PLANS AND ELEVATIONS FOR EXACT LOCATIONS AND MOUNTING HEIGHTS.
3. CIRCUIT NUMBERS INDICATED DO NOT REFLECT THE ACTUAL POSITION OF THE CIRCUIT BREAKER IN THE PANEL. RATHER, THE NUMBER INDICATES WHICH DEVICES ARE CONNECTED TO A COMMON CIRCUIT. EC SHALL UTILIZED SPARES, SPACES AND CIRCUITS RELIEVED FROM DUTY TO PROVIDE THE INDICATED NUMBER OF CIRCUITS.
4. EXISTING TO REMAIN, "ETR", ON THIS PLAN REFERS TO THE STATUS OF BASIC ELECTRICAL DEVICES. THERE MAY BE SOME WORK REQUIRED IN THESE SPACES INVOLVING BACK-FEEDING EXISITING CIRCUITS OR OTHER MODIFICATIONS. SEE ALL DOCUMENTS THAT MAKE UP THIS CONTRACT FOR THE TOTAL EXTENT OF WORK REQUIRED IN ALL SPACES.
5. FIELD COORDINATE EXACT HEIGHT AND LOCATION OF LIGHT FIXTURES IN MECHANICAL, TELE/DATA, AND ELECTRICAL ROOMS TO AVOID CONFLICT WITH MECHANICAL EQUIPMENT, DUCT WORK, PIPES, AND STRUCTURAL MEMBERS. FIXTURES SHALL BE CHAIN HUNG AND SUPPORTED FROM THE EXPOSED CEILING. DUCT WORK AND UTILITY PIPING SHALL NOT BE USED FOR SUPPORT. ANY CONFLICT SHALL BE BROUGHT TO THE ATTENTION OF THE ARCHITECT/OWNER.

SHEET NOTES -

6. EXTEND EXISTING FIRE ALARM CIRCUITS SERVING THE AREA TO NEW FIRE ALARM DEVICES SHOWN ON THIS PLAN. CIRCUITS ARE SERVED FROM EXISTING PANEL WITHIN EXISTING CLOSET 5507. REFER TO E105 FOR EXISTING PANEL LOCATION.
7. PRIOR TO CORING OR CUTTING CONCRETE SLAB, X-RAY SLAB TO DETERMINE EXISTING CONDUIT PLACEMENT WITHIN THE SLAB.
8. SEE SHEET A001 FOR PROJECT PHASING DRAWINGS AND NOTES.
9. SYMBOLS LIST MAY NOT INCLUDE ALL SYMBOLS INDICATED ON THIS SHEET. FOR A COMPLETE LIST OF SYMBOLS, PLEASE REFERENCE SHEET E000.
10. CORE AND X-RAY BY EC.
11. FOR ANY WORK TO BE COMPLETED ON THE 4TH FLOOR, THE FOLLOWING SHALL APPLY: ACCESS TO 4TH FLOOR WOULD BE 7PM TO 7AM AND ONLY ONE TEAM ROOM PER NIGHT.

KEYED NOTES -

- CLEAN, RECONNECT AND REINSTALL TRANSFORMER. PROVIDE 1. NEW WIRING AND CONDUIT TO MATCH EXISTING AS REQUIRED FOR TRANSFORMER INSTALLATION AND TO RESTORE TO FULL WORKING CONDITION. TRANSFORMER SHALL BE INSTALLED SO THERE IS A MINIMUM CLEARANCE BEHIND THE TRANSFORMER OF 6".
- CLEAN, RECONNECT AND REINSTALL DISCONNECT SWITCH. PROVIDE NEW WIRING AND CONDUIT TO MATCH EXISTING AS REQUIRED FOR DISCONNECT SWITCH INSTALLATION AND TO RESTORE TO FULL WORKING CONDITION.
- RECEPTACLE AND CUSTOM J-BOX WITH BLANK FACEPLATE FOR MONITOR LOCATION. VERIFY MOUNTING HEIGHT WITH ARCHITECTURAL ELEVATIONS AND OWNER PRIOR TO ROUGH-IN. EC SHALL RUN A 2" CONDUIT WITH PULL STRING FROM JUNCTION BOX AND TERMINATE AT CEILING DUCT CD-1/CD-2. REFER TO DETAIL 2/E510 FOR CEILING DUCT LOCATION.
- RECEPTACLE AND CUSTOM J-BOX WITH BLANK FACEPLATE FOR MONITOR LOCATION. VERIFY MOUNTING HEIGHT WITH ARCHITECTURAL ELEVATIONS AND OWNER PRIOR TO ROUGH-IN. EC SHALL RUN A 2" CONDUIT WITH PULL STRING FROM JUNCTION BOX AND TERMINATE AT CEILING DUCT CD-1/CD-2. REFER TO DETAIL 2/E510 FOR CEILING DUCT LOCATION.
- EQUIPMENT CONNECTION LOCATED ON THE SECOND FLOOR ROOF.
- DISCONNECT FOR AHU-5506.
- REFER TO SHEETS E510, E511, AND E512 FOR ANY ADDITIONAL WORK ASSOCIATED WITH THE CATH LAB EQUIPMENT BEING INSTALLED, INCLUDING BUT NOT LIMITED TO DUCTS, JUNCTION BOXES, CONDUITS, CIRCUIT BREAKERS, CONDUCTORS, LIGHTS, AND SWITCHES. ELECTRICAL WORK REQUIRED BY THESE DRAWINGS SHALL BE INCLUDED AS PART OF THE ELECTRICAL CONTRACTOR'S WORKS.
- EC SHALL WIRE PER DRAWINGS ON SHEETS E510, E511, AND E512. REFER TO CONNECTION "UPS".
- EC SHALL WIRE PER DRAWINGS ON SHEETS E510, E511, AND E512. REFER TO CONNECTION "MP".

KEYED NOTES -

- EC SHALL WIRE PER DRAWINGS ON SHEETS E510, E511, AND E512. REFER TO CONNECTION "RMP".
- EMERGENCY POWER OFF BUTTON FOR IMAGING EQUIPMENT.
- REFER TO DETAIL 4/E500 FOR ANY PENETRATIONS INTO EXISTING LEAD-LINED WALL.
- EC SHALL WIRE PER DRAWINGS ON SHEETS E510, E511, AND E512. REFER TO CONNECTION "MD1".
- PROVIDE (2) NEW VSMC STARTERS TO SERVE EXISTING EXHAUST FAN EF-1 CATH. (1) WILL BE USED AS A STANDBY MOTOR CONTROLLER. WIRE IN PARALLEL. LOCATE IN SAME LOCATION AS REPLACED STARTER. MATCH EXISTING WIRE AND CONDUIT SIZES AS REQUIRED.
- PUSH BUTTON ACTUATORS FURNISHED BY GENERAL CONTRACTOR. ELECTRICAL CONTRACTOR SHALL PROVIDE BOX, ROUGH-IN AND 2 #12, 1/2 CONDUIT BETWEEN PUSH BUTTON ACTUATOR, FOOT SWITCH AND CONTROLLER. E.C. TO VERIFY FOOT SWITCH REQUIREMENTS WITH MANUFACTURER PRIOR TO ROUGH-IN.
- TWO CIRCUITS PROVIDED FOR MULTI-OUTLET ASSEMBLY ALTERNATE CIRCUIT FEEDING EVERY OTHER OUTLET ALONG ASSEMBLY.
- PROVIDE (1) ADDITIONAL 3" CONDUIT FROM PEDESTAL "T1" TO CONTROL ROOM "CRB". REFER TO SHEETS E510, E511, AND E512 FOR THESE REFERENCE POINTS.
- E.C. SHALL FEED MED GAS PANEL FROM A 20/1P CIRCUIT WITH 3 #12 & 1 #12 GRD 3/4 CONDUIT FROM PANEL EUL-LS/55-1. SEE SEE E105 FOR CLOSET LOCATION.
- EC SHALL WIRE PER DRAWINGS ON SHEETS E510, E511, AND E512. REFER TO CONNECTION "T1".
- EC SHALL WIRE PER DRAWINGS ON SHEETS E510, E511, AND E512. REFER TO CONNECTION "SC1".

KEYED NOTES -

- EC SHALL WIRE PER DRAWINGS ON SHEETS E510, E511, AND E512. REFER TO CONNECTION "PU1".
- CONTROL TRANSFORMER FOR REMOTE MONITORING PANEL. REFER TO ONE-LINE DIAGRAM FOR MORE INFORMATION.
- ISOLATION TRANSFORMER FOR TABLE POWER OUTLET. REFER TO ONE-LINE DIAGRAM FOR MORE INFORMATION. EC SHALL WIRE PER DRAWINGS ON SHEETS E510, E511, AND E512. REFER TO CONNECTION "TF".
- DISCONNECT FOR CATH1D. REFER TO ONE-LINE DIAGRAM FOR MORE INFORMATION.

5th FLOOR
NEW SITE
PREP CATH LAB

PROJECT KEY PLAN:

100% CONSTRUCTION DOCUMENTS

Project Number
695-14-112

Building Number
111

Drawing Number
EP205

Office of Facilities Management
 Department of Veterans Affairs

Dept. of Veterans Affairs Medical Center
5000 W. National Avenue
Milwaukee, WI

CONSULTANTS:

SIGMA GROUP
Single Source. Sound Solutions.
www.thesigmagroup.com
1300 West Canal Street
Milwaukee, WI 53233
Phone: 414-643-4200
Fax: 414-643-4210

RING & DUCHATEAU
17400 W. Capitol Drive Brookfield, WI 53045
Phone: 414-778-1700 / Fax: 414-778-2360 / r.d@ringdu.com
THIS BAR IS 1" LONG
IF IT MEASURES ANYTHING OTHER THAN 1"
ADJUST SCALE ACCORDINGLY.
RAD Project No. 214146

CHEQUAMEGON BAY ENGINEERING, INC.
2110 N. Harbor Road
Suite 100
Milwaukee, WI 53205
Phone: 414-258-0504
Fax: 414-258-0154

PROJECT LEADER/ARCHITECT:

Drawing Title
BUILDING 111 - FIFTH FLOOR PLAN - POWER & FIRE ALARM

Approved: Project Director

Project Title
Building 111 - Site Prep Cath Lab

Location
VA Medical Center, Milwaukee, WI

Date
30 March 2015

Checked By:
MIKE MCGANN
PE

Drawn By:
RD

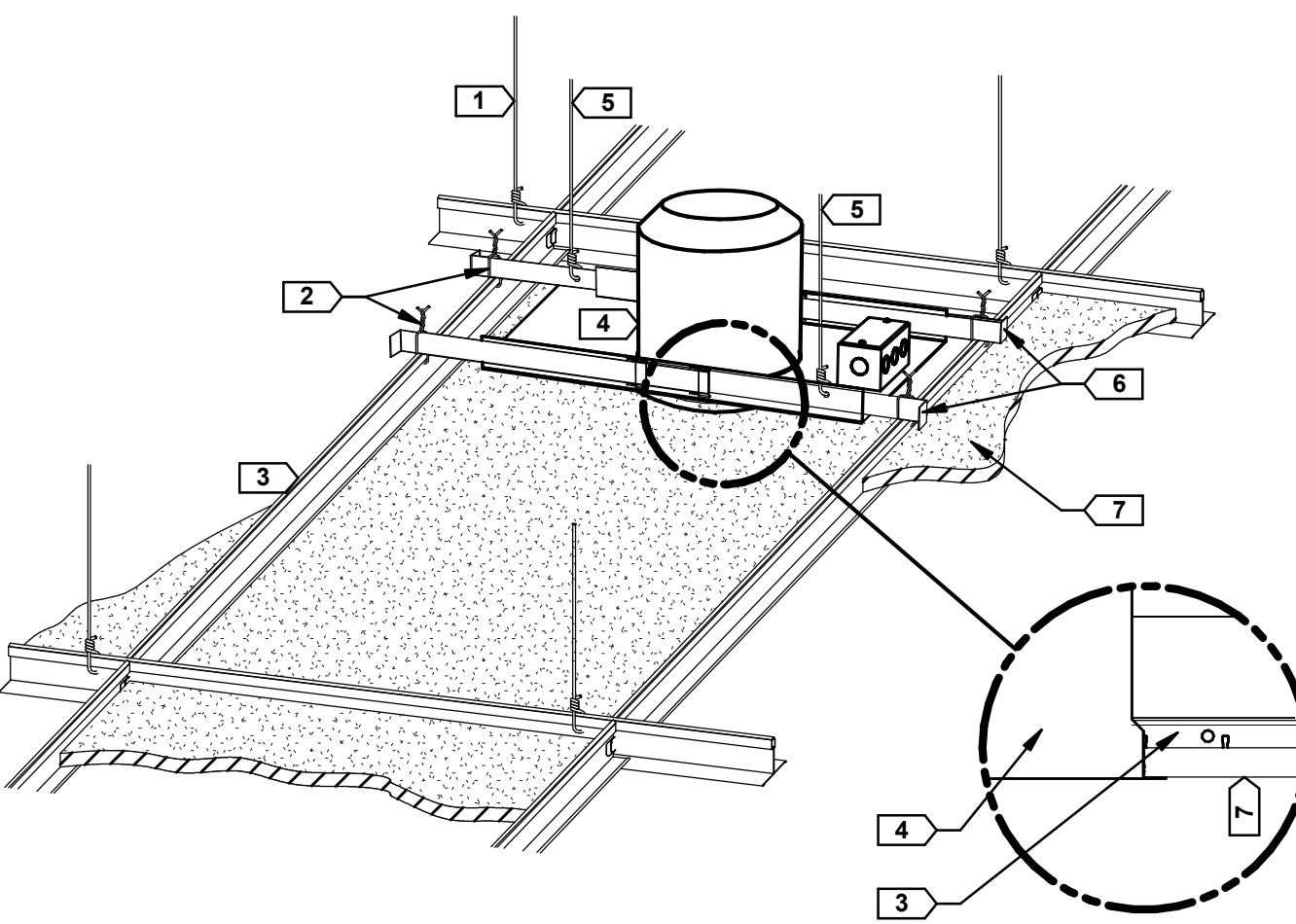
Project Number
695-14-112

Building Number
111

Drawing Number
EP205

VA FORM 08-6231, OCT 1978

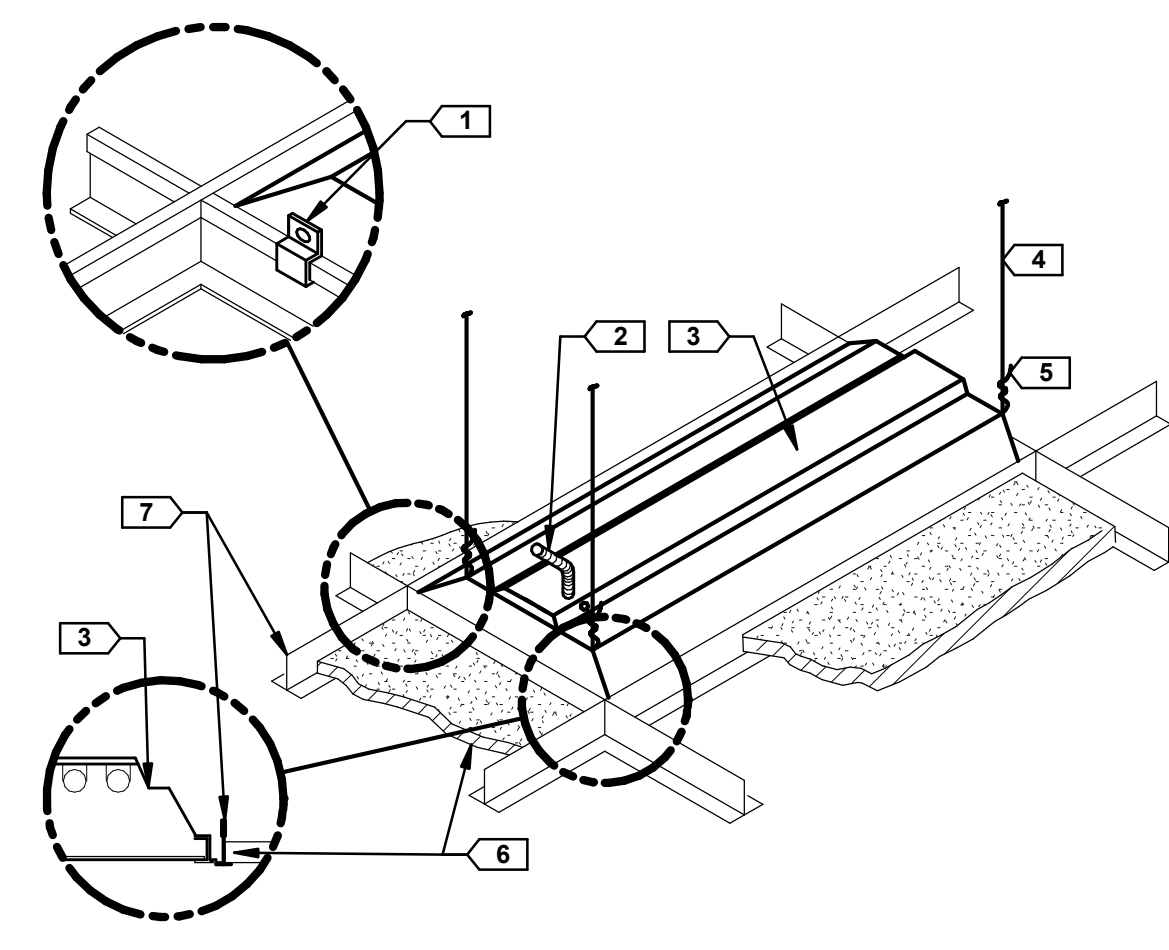
123456789



KEYED NOTES -

1. CEILING HANGER WIRE, TYP.
2. WIRE TIE OR SCREW BAR HANGER TO ARCHITECTURAL CEILING GRID TYP.
3. ARCHITECTURAL CEILING GRID
4. RECESSED CAN LUMINAIRE
5. 12GA. HANGER WIRE AT DIAGONAL CORNER ATTACHED TO STRUCTURE
6. LUMINAIRE BAR HANGERS
7. ACOUSTICAL CEILING TILE (TYP)

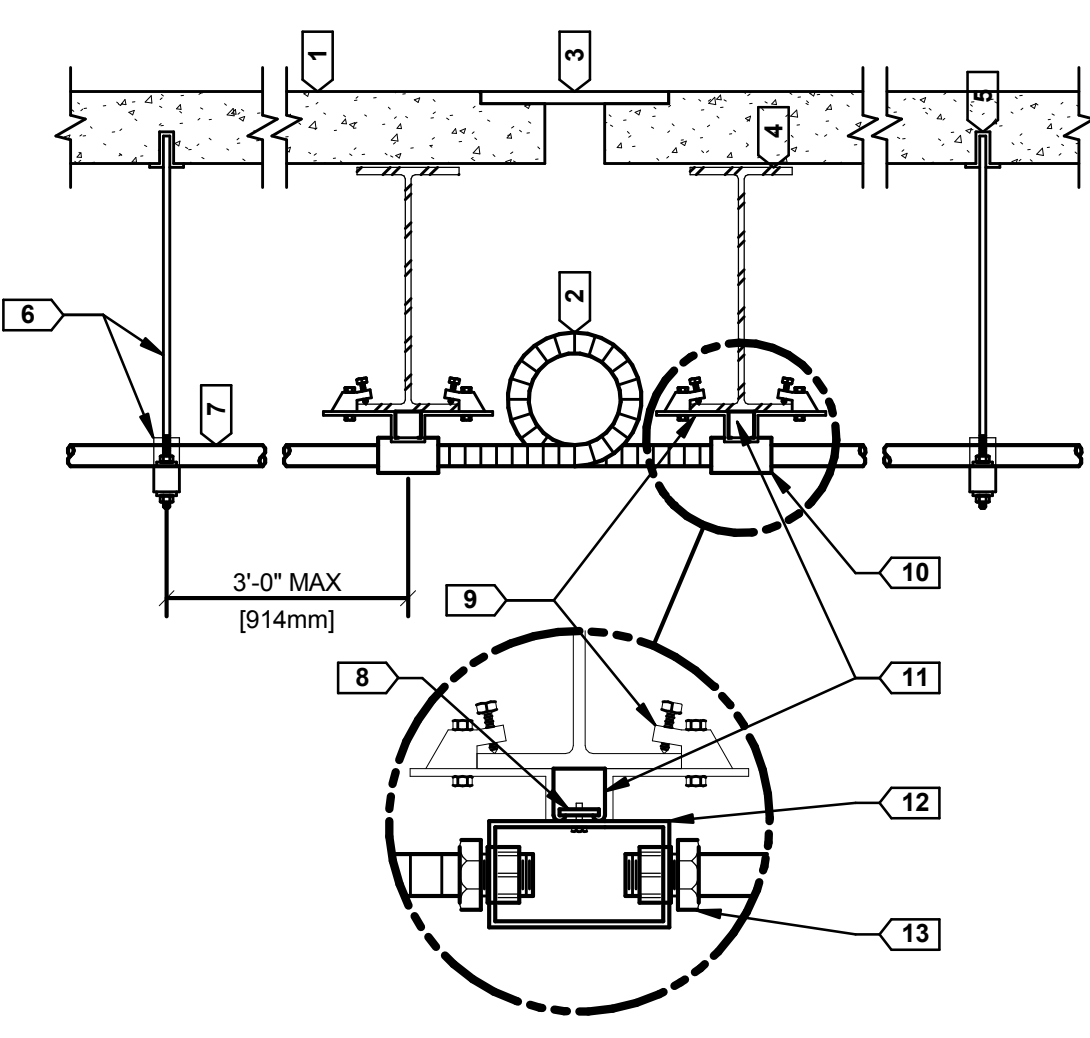
1 DOWNLIGHT MOUNTING - LAY-IN CEILING
E500 NOT TO SCALE



KEYED NOTES -

1. LUMINAIRE MANUFACTURER'S EARTHQUAKE CLIP, (4) PER FIXTURE AT CORNERS. ATTACH WITH SHEET METAL SCREW
2. FIXTURE WHIP FROM JUNCTION BOX (6FT. LONG MAX.)
3. LUMINAIRE. REFER TO SCHEDULE
4. LUMINAIRE SUSPENSION WIRES (#10 MIN) ATTACHED TO STRUCTURE (TYP EA. CORNER)
5. 3 TWIST MINIMUM (TYP)
6. ACOUSTICAL CEILING TILE (TYP)
7. ARCHITECTURAL CEILING GRID

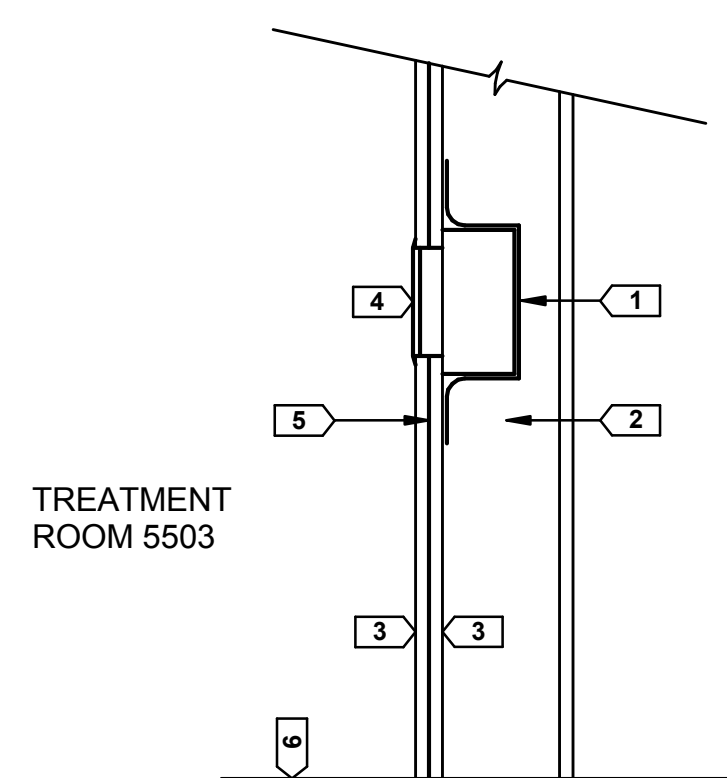
2 LUMINAIRE MOUNTING - LAY-IN CEILING
E500 NOT TO SCALE



KEYED NOTES -

1. FLOOR OR ROOF STRUCTURE. FIELD VERIFY ACTUAL CONDITIONS, TYP.
2. 15" FLEXIBLE GALVANIZED STEEL CONDUIT WITH CONDUCTORS & GREEN INSULATED EQUIPMENT GROUNDING CONDUCTOR.
3. SEISMIC OR EXPANSION JOINT. FIELD VERIFY ACTUAL CONDITIONS & LOCATIONS.
4. STRUCTURAL MEMBER (BEAM, JOIST, ETC.), TYP.
5. STEEL EXPANSION ANCHOR
6. CONDUIT TRAPEZE PER SD26053-02, TYP.
7. CONDUIT, TYP.
8. SPRING NUT
9. BEAM CLAMP, TYP.
10. JUNCTION BOX, TYP (SIZE AS REQUIRED)
11. INTEGRAL GALVANIZED LIPPED STEEL MOUNTING CHANNEL
12. JUNCTION BOX (SIZE AS REQUIRED)
13. CONDUIT COMPRESSION FITTING

3 CONDUIT JOINT CROSSING DETAIL
E500 NOT TO SCALE



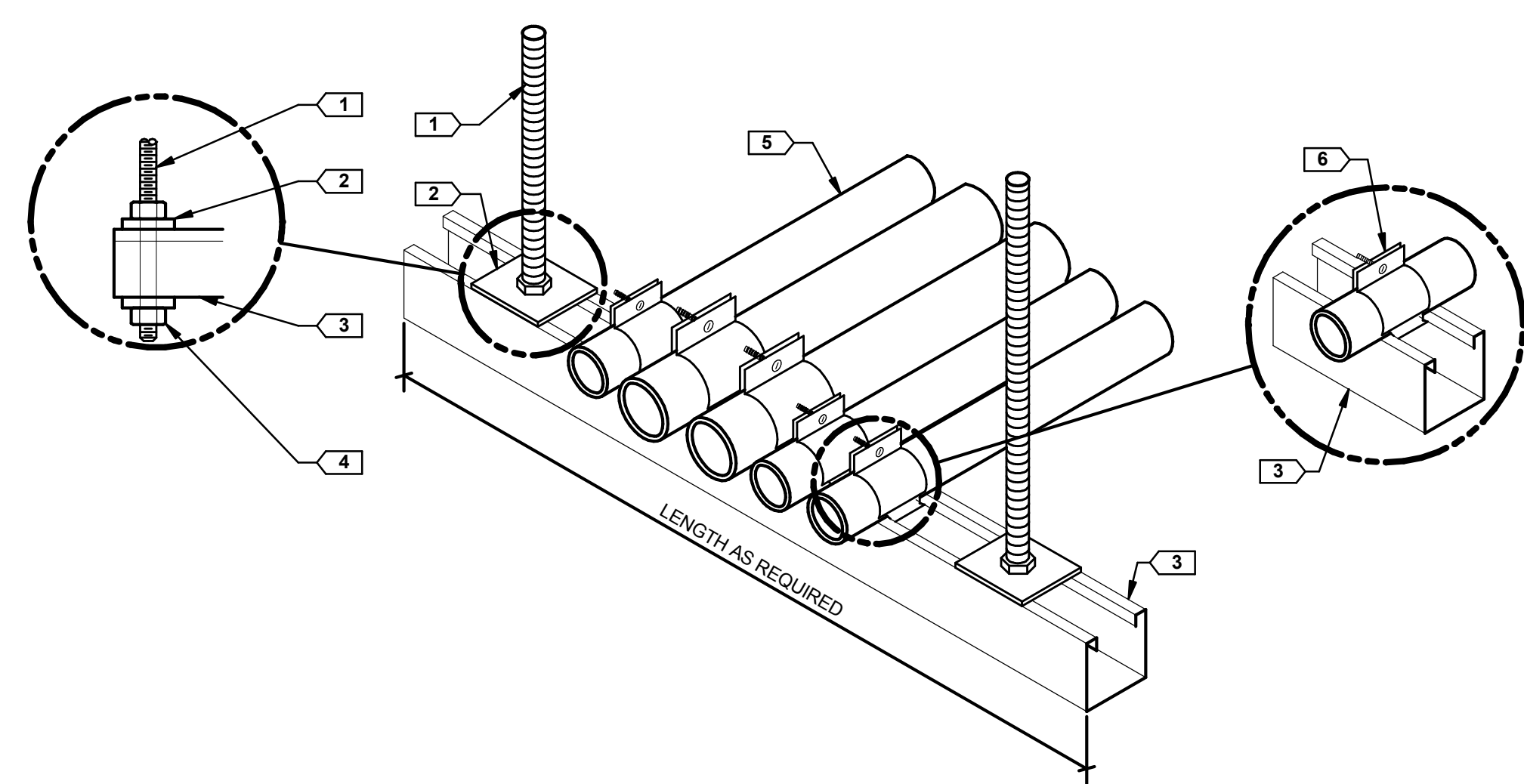
DETAIL NOTES -

1. EC SHALL PROVIDE EQUIVALENT X-RAY PROTECTION FOR ALL WALL PENETRATIONS AS INDICATED ON DRAWINGS.
2. SECURE LEAD TO BOX BEFORE DRYWALL IS INSTALLED.

KEYED NOTES -

1. BACKUP LEAD LINING BY EC. LEAD BOX SHIELDING SHALL BE NO LESS THAN 1.5mm.
2. METAL STUD WALL BY GC.
3. DRYWALL
4. TYPICAL WALL PENETRATION BY EC.
5. FRONT WALL LEAD LINING BY OTHERS.
6. FLOOR

4 LEAD LINED WALL PENETRATION DETAIL
E500 NOT TO SCALE



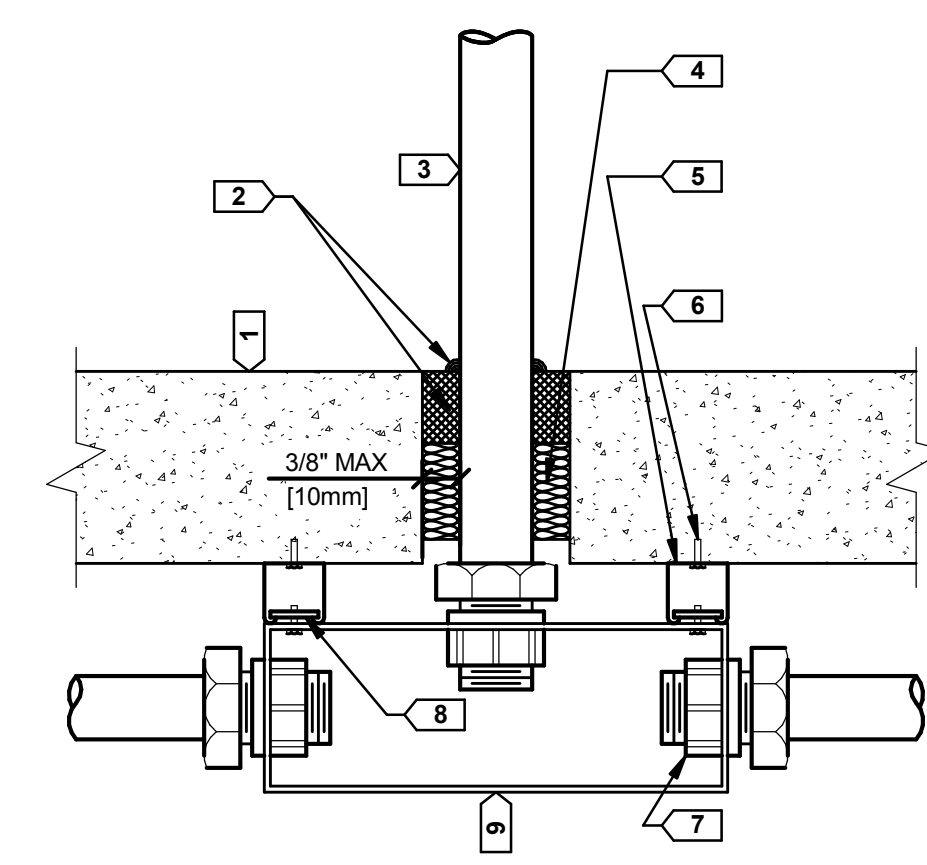
DETAIL NOTES -

1. METAL CHANNEL STRUT SUPPORT LONGER THAN THAN 36" SHALL BE INSTALLED WITH A CENTER SUPPORT ROD.
2. FASTEN THREADED ROD TO STRUCTURE BY APPROVED METHOD PER SPECIFICATION 26 0533, RACEWAYS AND BOXES FOR ELECTRICAL SYSTEMS. FIELD VERIFY EXACT CONDITIONS.
3. FOR TRAPEZE INSTALLATIONS IN SEISMIC AREAS REFER TO SPECIFICATION SECTION 10 05 41, SEISMIC RESTRAINT REQUIREMENTS FOR NON-STRUCTURAL COMPONENTS.

KEYED NOTES -

1. 3/8" MIN GALVANIZED THREADED ROD, TYP.
2. LOCKING SQUARE WASHER & LOCKNUT
3. INTEGRAL GALVANIZED LIPPED STEEL MOUNTING CHANNEL
4. WASHER & LOCKNUT
5. REFER TO PLANS FOR QUANTITY & SIZE OF CONDUITS
6. CONDUIT CLAMP. SIZE AS REQUIRED

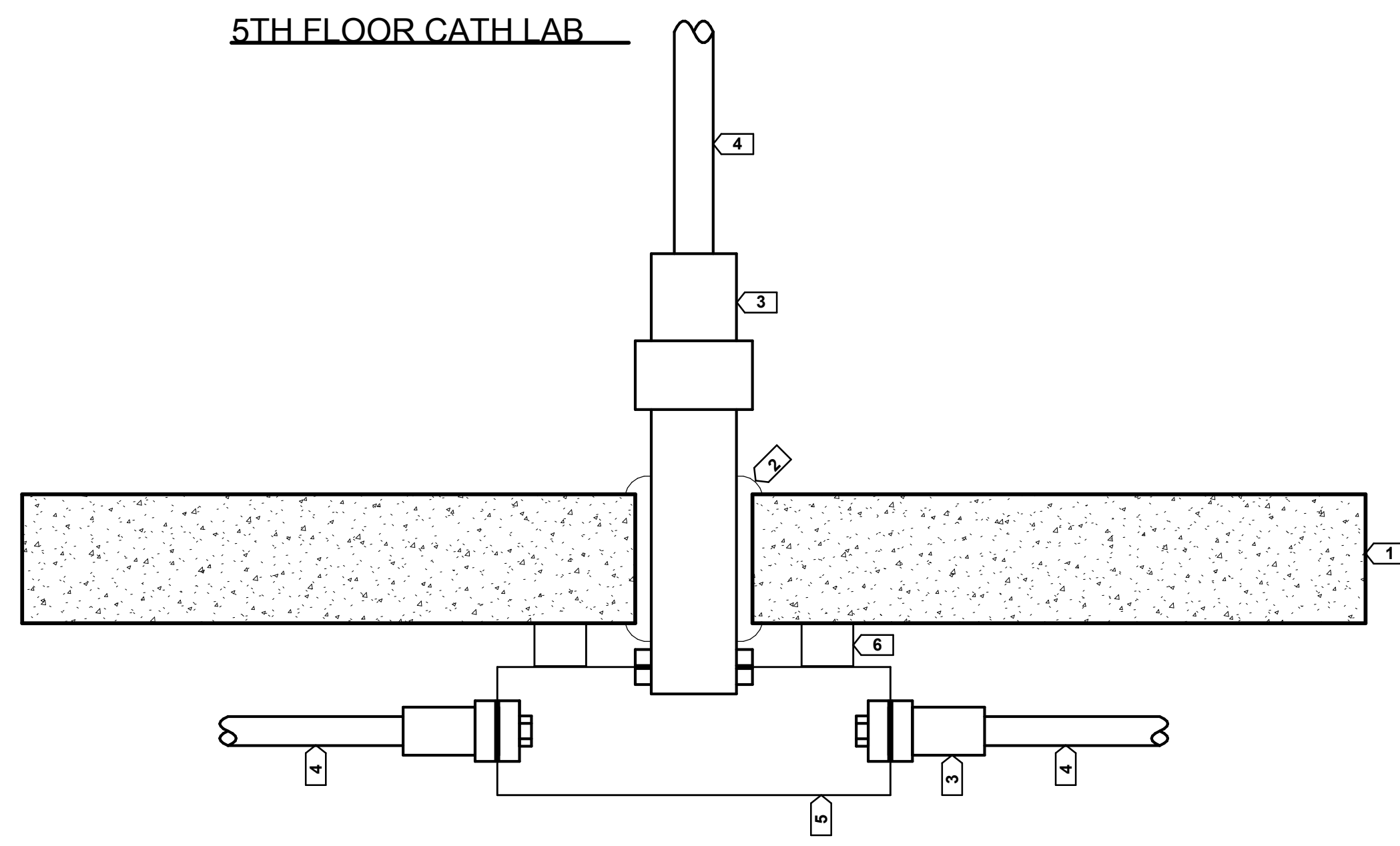
5 CONDUIT TRAPEZE MOUNTING DETAIL
E500 NOT TO SCALE



KEYED NOTES -

1. FLOOR SLAB, TYPICAL
2. FIRESTOP SEALANT PER SECTION 07 84 00, FIRESTOPPING
3. CONDUIT, TYPICAL
4. MINERAL WOOL (FIRMLY PACKED)
5. INTEGRAL GALVANIZED LIPPED STEEL MOUNTING CHANNEL, TYPICAL
6. STEEL EXPANSION ANCHOR, TYPICAL
7. CONDUIT COMPRESSION FITTING, TYPICAL
8. SPRING NUT, TYPICAL
9. JUNCTION BOX (SIZE AS REQUIRED)

6 FLOOR SLAB PENETRATION DETAIL
E500 NOT TO SCALE



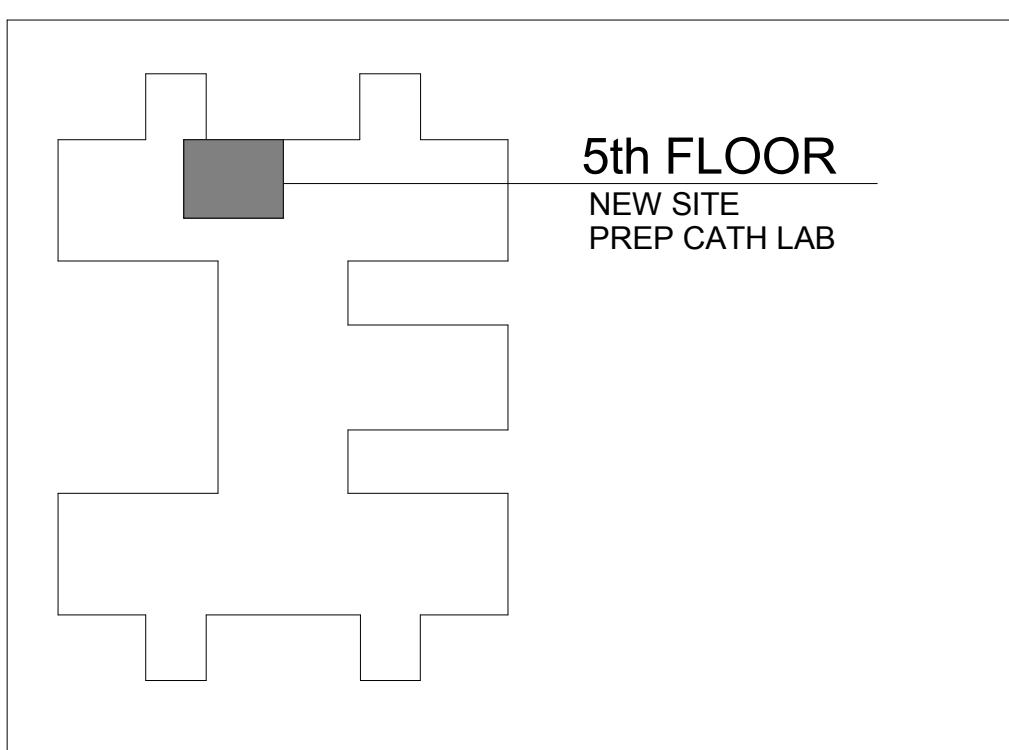
DETAIL NOTES -

1. EXISTING BUILDING FLOOR TO FLOOR HEIGHTS LIMIT ABOVE CEILING SPACE MAKING LARGE CONDUIT RADIIUSES DIFFICULT. THIS DETAIL IS INTENDED TO APPLY TO ALL CONDITIONS WHERE LARGE CONDUIT RADIIUSES ARE NOT CONSTRUCTIBLE, HOWEVER CABLE BENDING RADIUS MUST BE UTILIZED WHEN SELECTING ACTUAL SIZE OF BOX.

KEYED NOTES -

1. 2 HOUR RATED CONCRETE FLOOR.
2. RIGID METAL CONDUIT NIPPLE AND FIRE STOPPING.
3. CONDUIT FITTINGS
4. ELECTRICAL METALLIC TUBING AS REQUIRED FOR IMAGING EQUIPMENT. SEE SCHEDULES FOR SPECIFIC CONDUIT ROUTING AND SIZES.
5. SCREW COVER PULL BOX TO ELIMINATE SWEEP 90 BEND. MINIMUM BOX SIZE SHALL BE 12" X 12" X 8" UNLESS CABLE BENDING RADIUS REQUIRES LARGER BOX.
6. METAL CHANNEL AND THREADED ROD TO SUPPORT BOX.

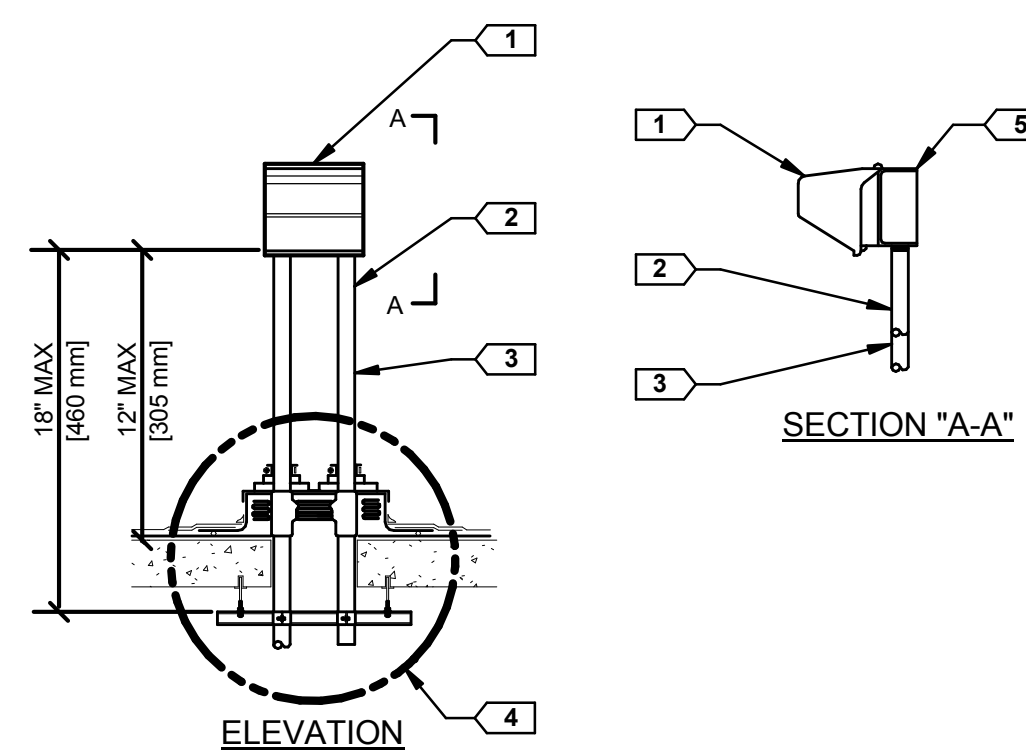
7 OFFICES BELOW CATH LAB
E500 NOT TO SCALE



PROJECT KEY PLAN:

100% CONSTRUCTION DOCUMENTS

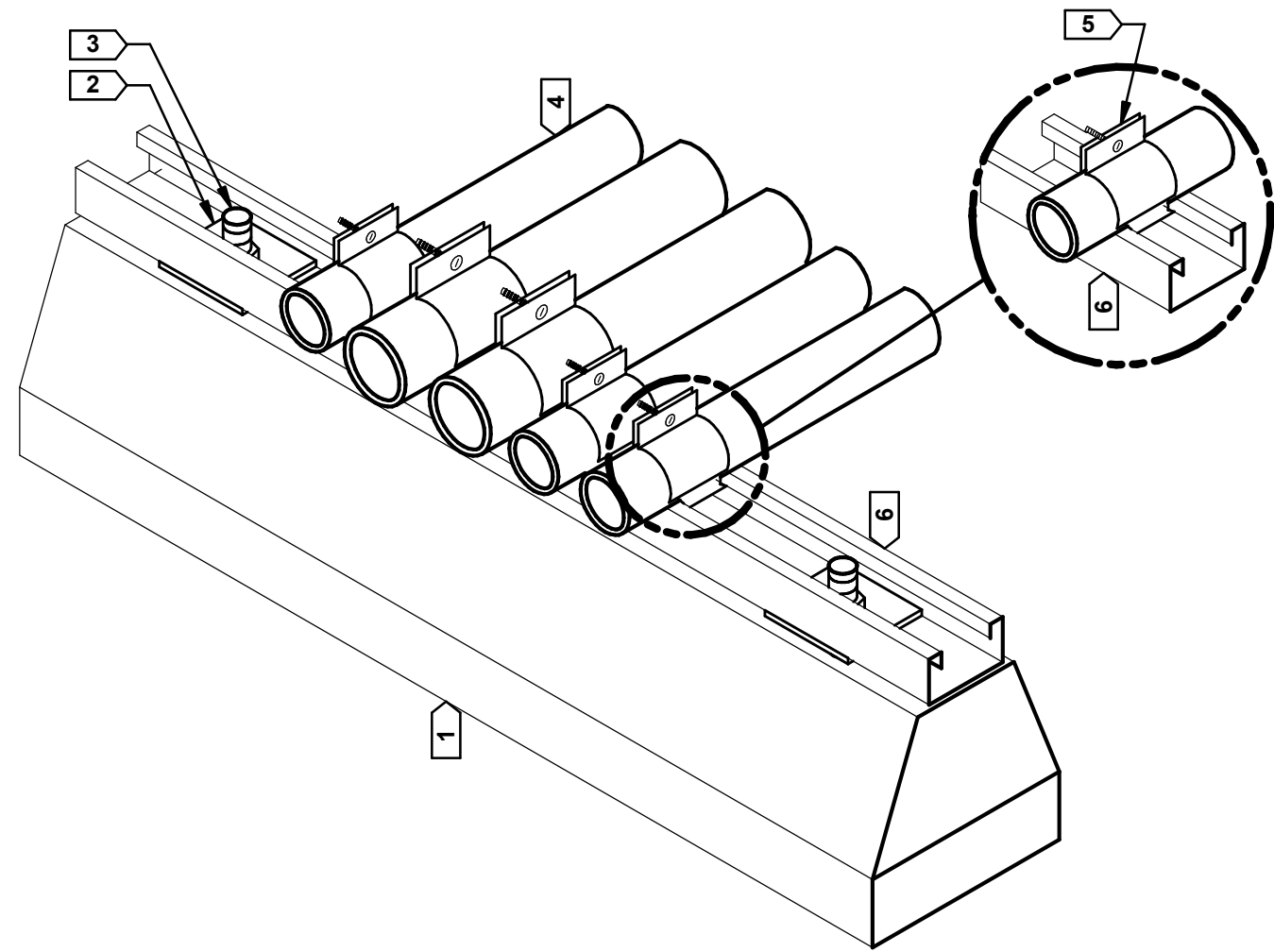
Revisions:	Date	 Dept. of Veterans Affairs Medical Center 5000 W. National Avenue Milwaukee, WI		CONSULTANTS:  SIGMA GROUP Single Source. Sound Solutions. www.thesigmagroup.com 1300 West Canal Street Milwaukee, WI 53233 Phone: 414-643-4200 Fax: 414-643-4210	 RING & DUCHATEAU 17400 W. Capitol Drive Brookfield, WI 53045 Phone: 414-778-1700 / Fax: 414-778-2360 / e@ringdu.com THIS BAR IS 1" LONG IF IT MEASURES ANYTHING OTHER THAN 1" ADJUST SCALE ACCORDINGLY. RAD Project No. 214146	 CHEQUAMEGON BAY ENGINEERING, INC. 211 8th Street East Aurora, WI 54008 Phone: (715) 862-5824 Fax: (715) 862-5025 MILWAUKEE, WI 325 N. Sawyer Road Suite 100 Milwaukee, WI 53205 Phone: (414) 258-0504 Fax: (414) 258-0154	PROJECT LEADER/ARCHITECT:	Drawing Title ELECTRICAL DETAILS	Project Title Building 111 - Site Prep Cath Lab	Project Number 695-14-112	Office of Facilities Management		
								Approved: Project Director	Location VA Medical Center, Milwaukee, WI	Building Number 111		Office of Facilities Management	
									Date 30 March 2015	Checked By: Checker	Drawn By: Author	Drawing Number E500	Department of Veterans Affairs



KEYED NOTES -

- CAST METAL "WHILE-IN-USE" WP COVER(S) & RECEPTACLE(S).
- RIGID STEEL CONDUIT FOR SUPPORT PER N.E.C. ART. 314
- RIGID STEEL CONDUIT FOR WIRING
- ROOF PENETRATION AND CONDUIT SUPPORT PER SD260533-04
- CAST METAL, 2-GANG, NEMA 3R JUNCTION BOX WITH THREADED HUBS.

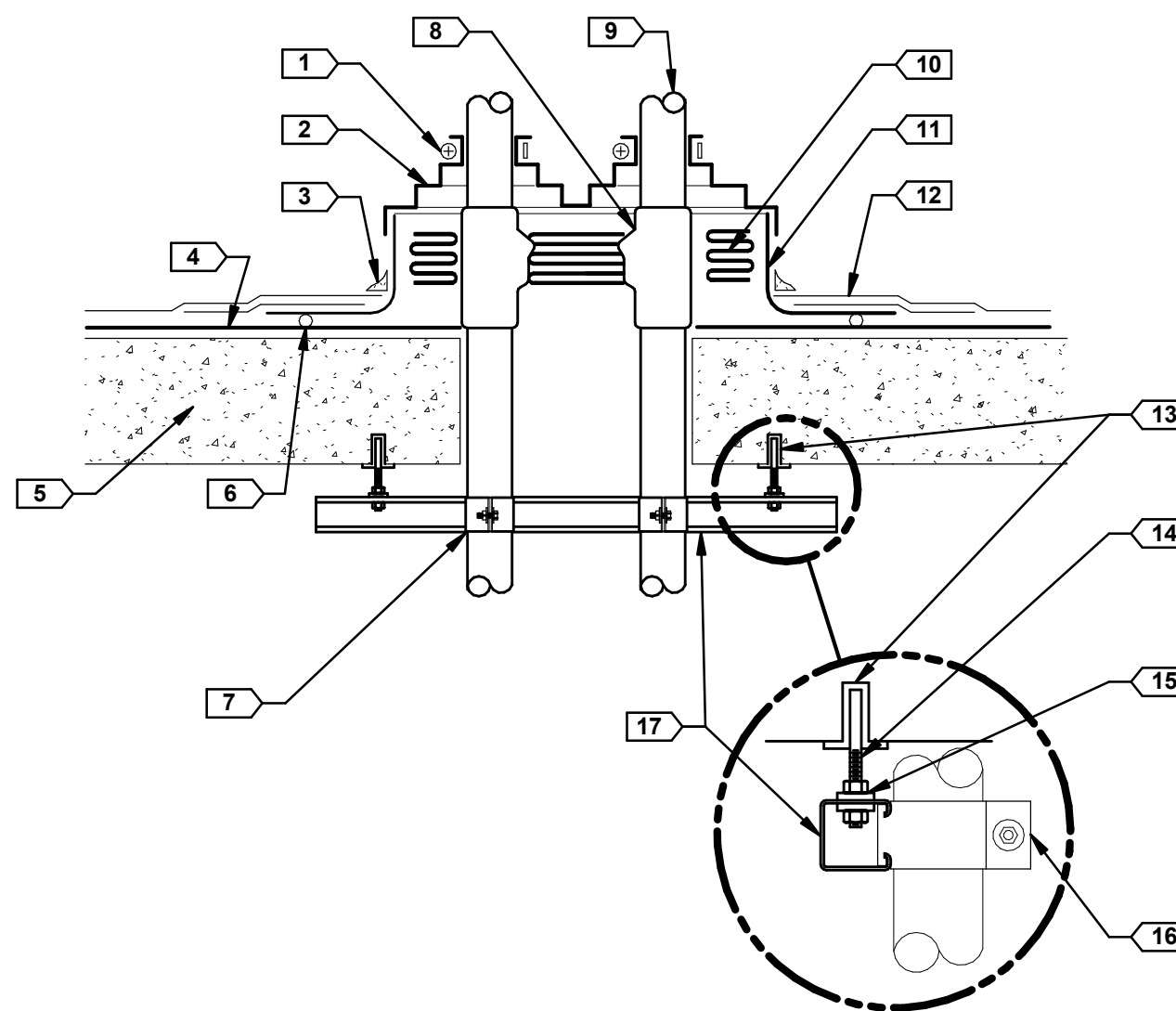
1
E501
RECEPTACLE ROOF MOUNTING DETAIL
NOT TO SCALE



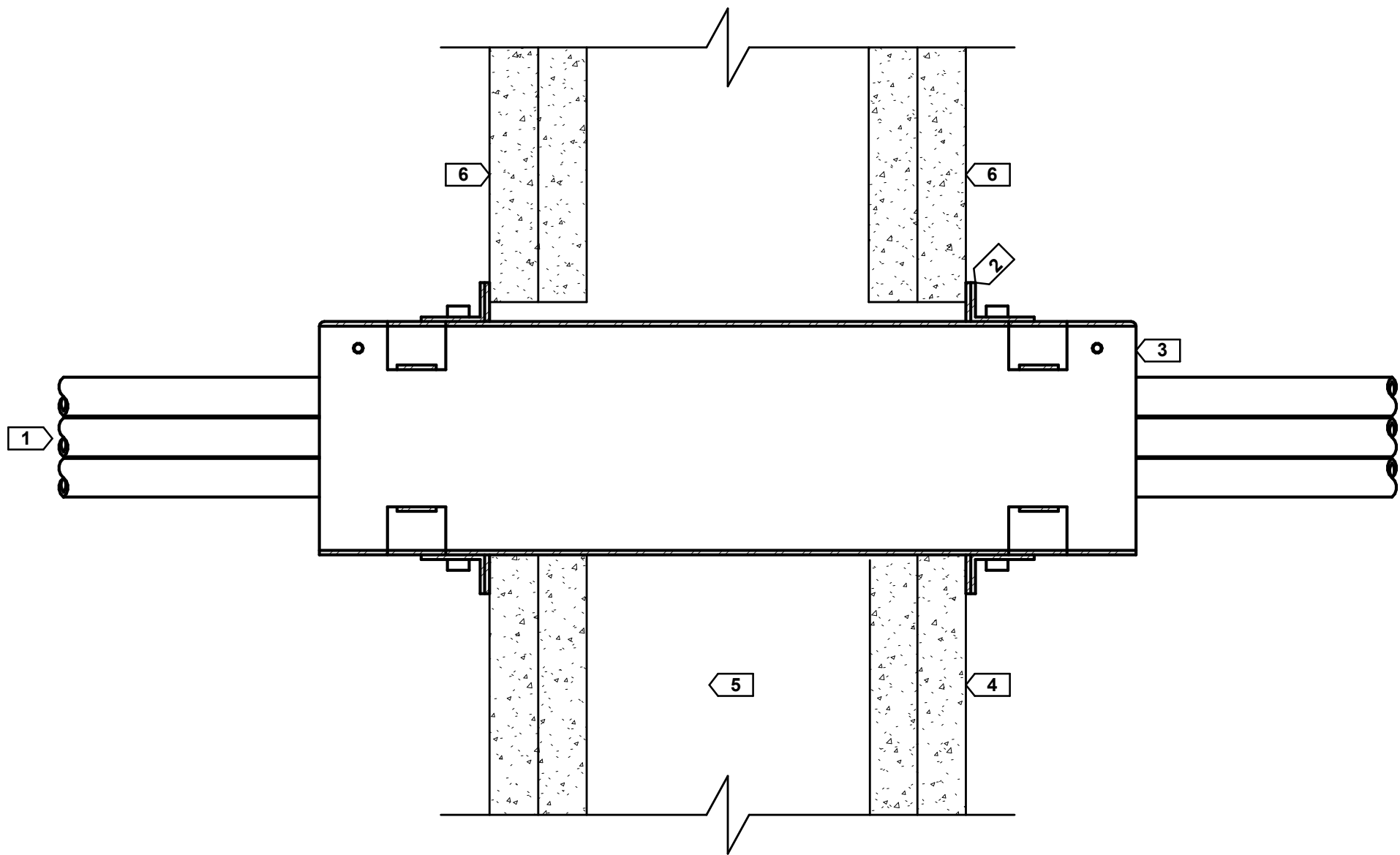
KEYED NOTES -

- UV-INHIBITED POLYCARBONATE OR HIGH-DENSITY POLYPROPYLENE PLASTIC BLOCK, LENGTH AS REQUIRED
- LOCKING SQUARE WASHER & LOCKNUT
- 3/8" MIN GALVANIZED THREADED ROD, TYP.
- REFER TO PLANS FOR QUANTITY & SIZE OF CONDUITS
- CONDUIT CLAMP, SIZE AS REQUIRED
- INTEGRAL GALVANIZED LIPPED STEEL MOUNTING CHANNEL

2
E501
ROOF CONDUIT SUPPORT DETAIL
NOT TO SCALE



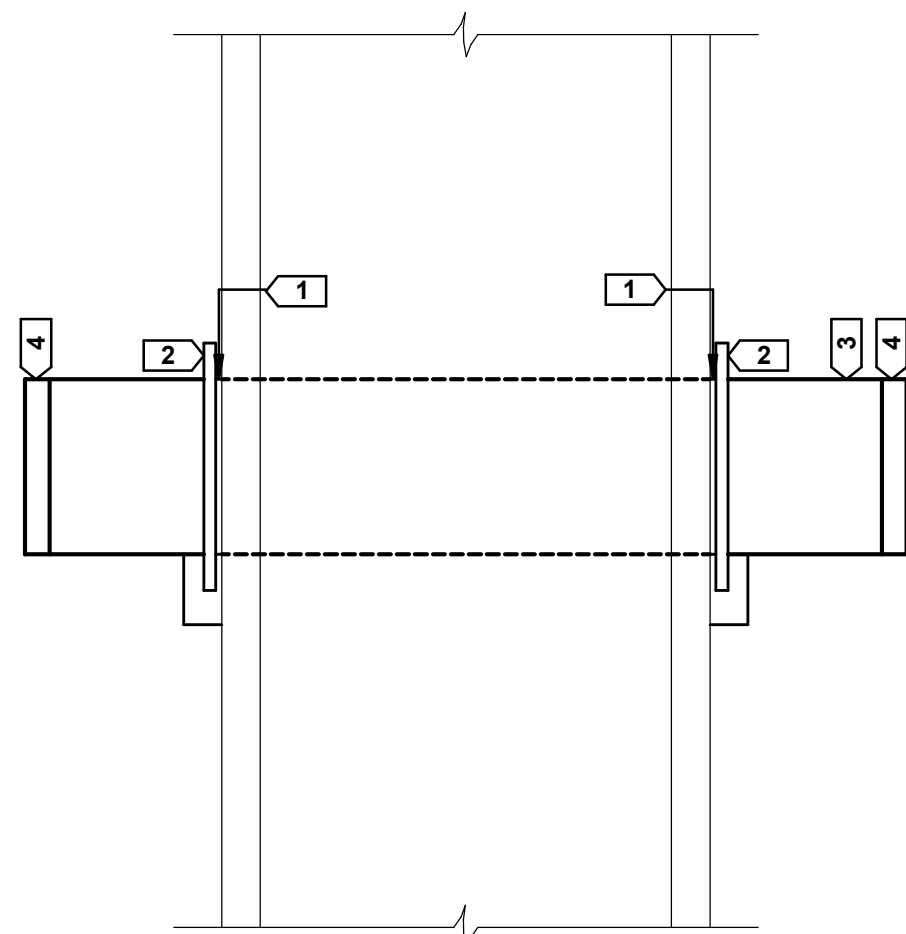
3
E501
ROOF PENETRATION DETAIL
NOT TO SCALE



KEYED NOTES -

- LOW VOLTAGE AND SIGNAL CABLES
- RATED WALL SLEEVE WALL FLANGE
- RATED WALL SLEEVE
- 1 HOUR RATED WALL
- GYPSUM WALL CAVITY
- FIRE LABEL

4
E501
TYPICAL RATED WALL SLEEVE PENETRATION DETAIL
NOT TO SCALE



DETAIL NOTES -

- MECHANICALLY SUPPORT BOTH SIDES.
- FIRE CALK BOTH SIDES OUTSIDE DIAMETER OF CONDUIT.
- FIRE PUTTY OR PILLOWS INSIDE DIAMETER OF CONDUIT.
- FIRE PIPE PLUGS REQUIRED.
- COORDINATE FIRE MATERIALS WITH CONSTRUCTION MANAGER.

KEYED NOTES -

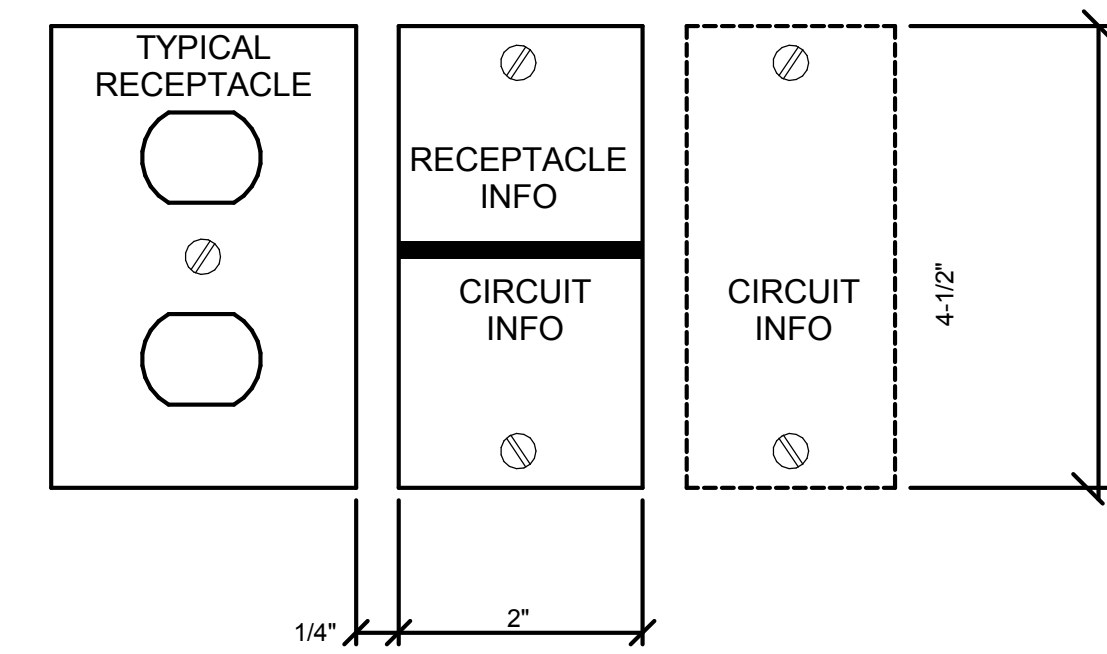
- FIRE CAULK
- CLAMPS
- EMT CONDUIT
- INSULATED PUSH-ON BUSHING.

5
E501
TYPICAL NON-RATED WALL SLEEVE PENETRATION DETAIL
NOT TO SCALE

REQUIRED LABELS FOR ALL RECEPTACLES:

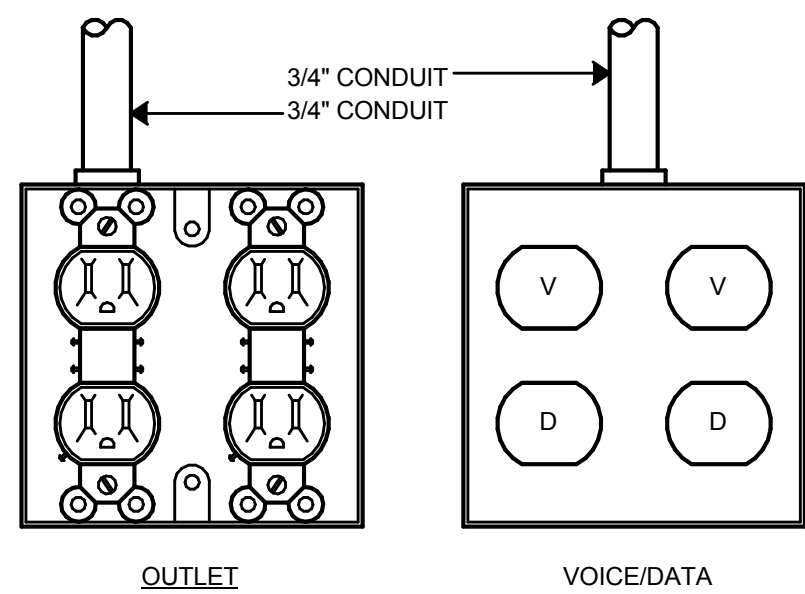
FIRST PART OF LABEL INDICATES RECEPTACLE INFORMATION SUCH AS RECEPTACLE ID NO. TYPE, VOLTS, AMPS, PHASE, PANEL BOARD, CIRCUIT NO, PANEL BOARD ROOM NO.

SECOND PART OF CIRCUIT INDICATES CIRCUIT INFORMATION SUCH AS IDENTITY OF RECEPTACLES ON THE SAME CIRCUIT, PANEL BOARD, AND CIRCUIT I.D. PROVIDE SECOND LABEL AS REQUIRED.

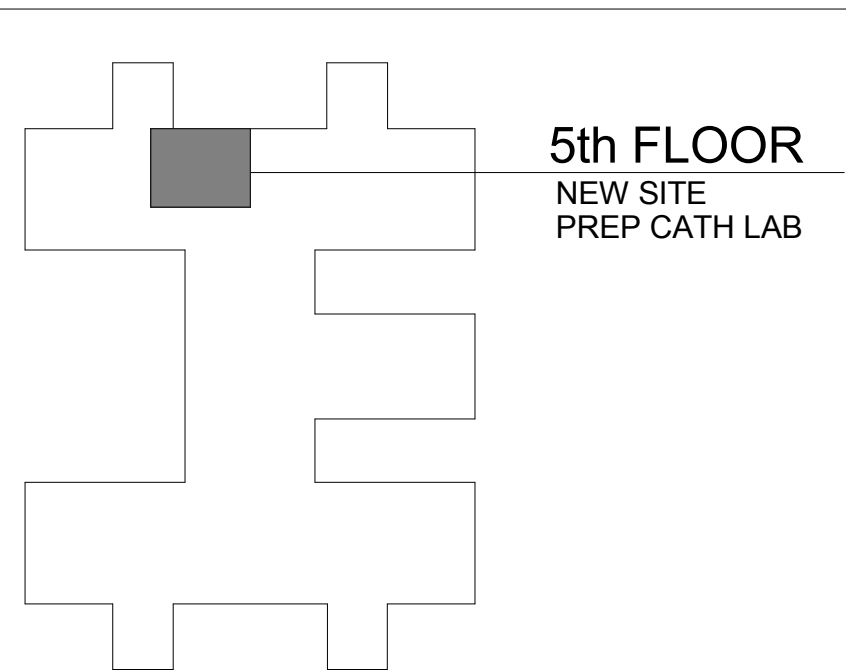


ALL LABELS TO BE 1/16" PHENOLIC PLASTIC. RECEPTACLES ON EMERGENCY POWER TO USE RED PLASTIC WITH WHITE LETTERING. RECEPTACLES ON NORMAL POWER TO USE BLACK PLASTIC WITH WHITE LETTERING TO BE 3/16" HIGH. LOCATION OF LABELS AS SHOWN OR AS DIRECTED BY COR. SCREW LABELS TO WALL WITH #6 X3/4" LENGTH SCREW, SET IN PLASTIC DRYWALL TYPE ANCHORS.

6
E501
RECEPTACLE LABEL DETAIL
NOT TO SCALE

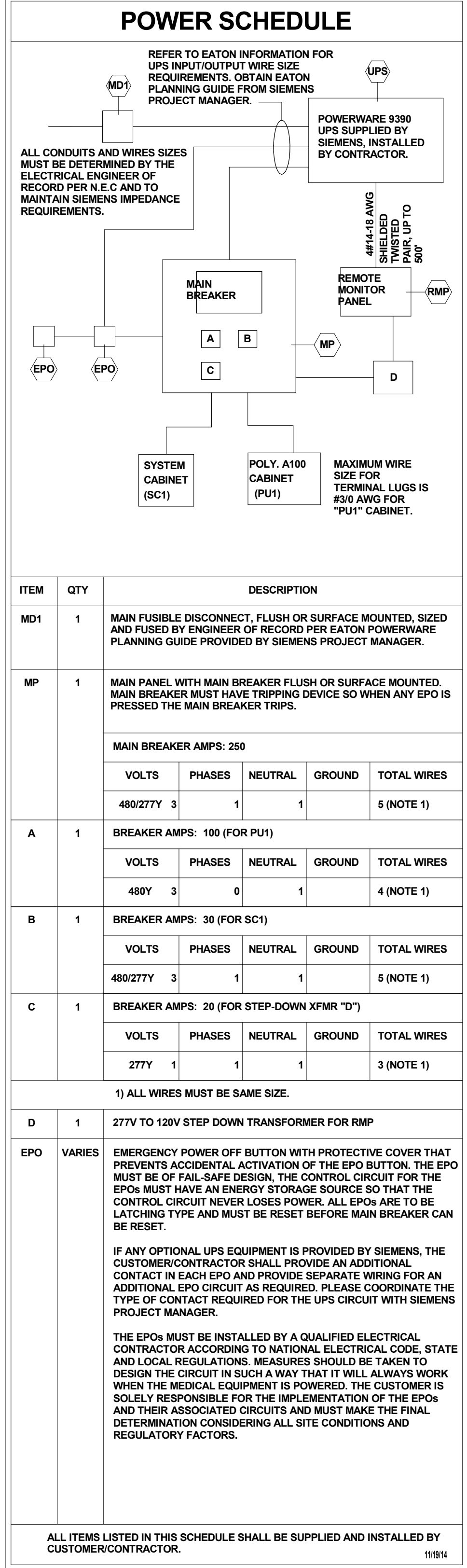


7
E501
OUTLET DETAIL
NOT TO SCALE

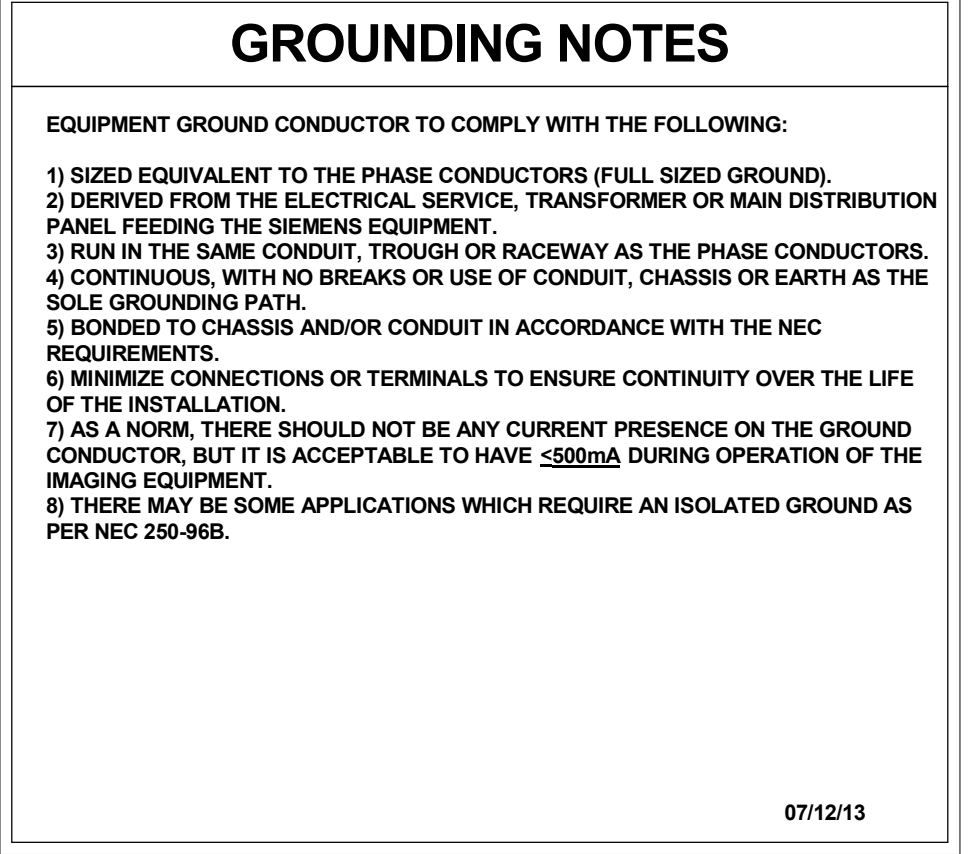
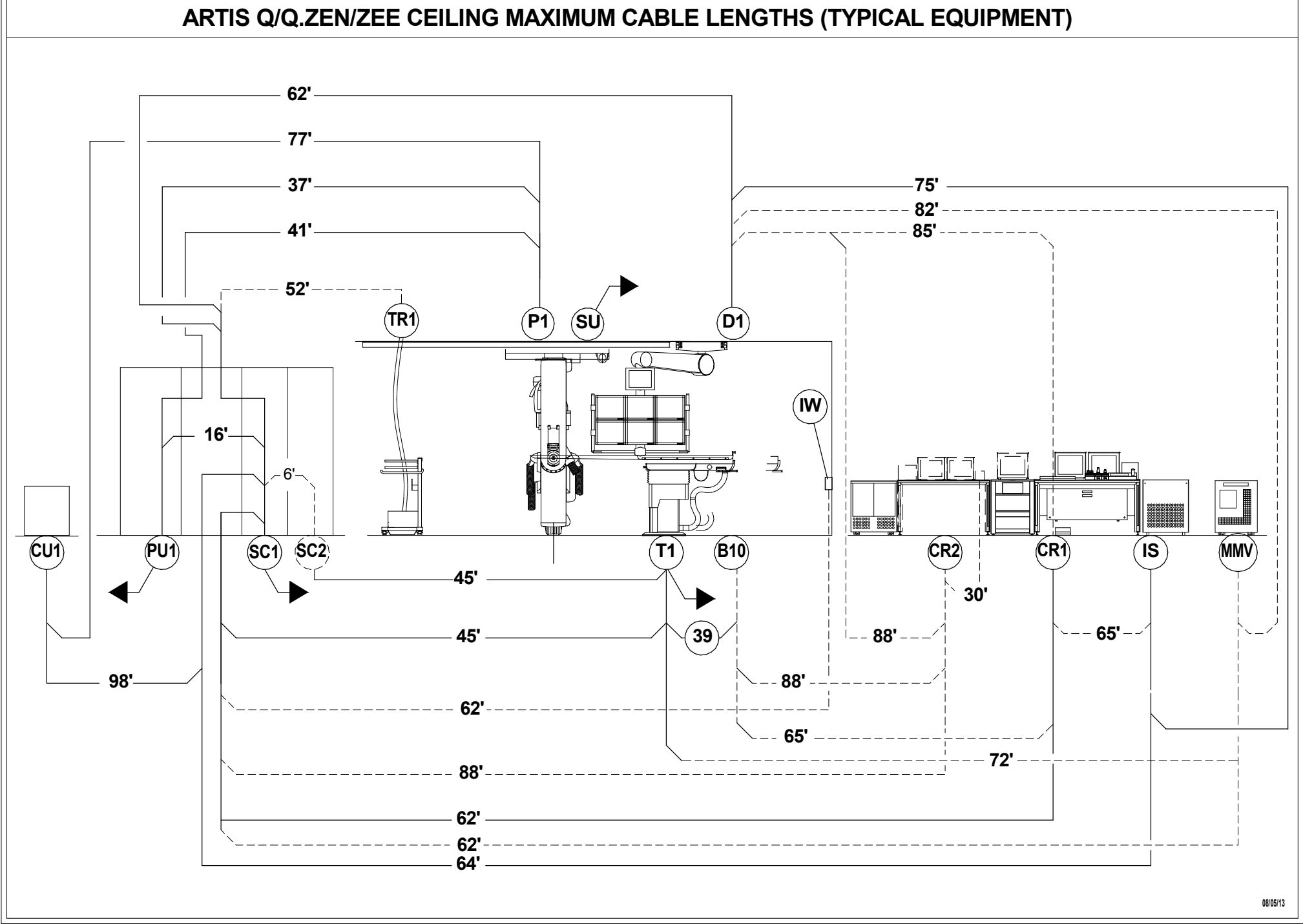


PROJECT KEY PLAN: 100% CONSTRUCTION DOCUMENTS

--	--	--	--	--	--	--	--	--	--	--	--	--	--	--	--	--	--	--	--	--	--	--	--	--	--	--	--	--	--	--	--	--	--	--	--	--	--	--	--	--	--	--	--	--	--	--	--	--	--	--	--	--	--	--	--	--	--	--	--	--	--	--	--	--	--	--	--	--	--	--	--	--	--	--	--	--	--	--	--	--	--	--	--	--	--	--	--	--	--	--	--	--	--	--	--	--	--	--	--	--	--	--	--	--	--	--	--	--	--	--	--	--	--	--	--	--	--	--	--	--	--	--	--	--	--	--	--	--	--	--	--	--	--	--	--	--	--	--	--	--	--	--	--	--	--	--	--	--	--	--	--	--	--	--	--	--	--	--	--	--	--	--	--	--	--	--	--	--	--	--	--	--	--	--	--	--	--	--	--	--	--	--	--	--	--	--	--	--	--	--	--	--	--	--	--	--	--	--	--	--	--	--	--	--	--	--	--	--	--	--	--	--	--	--	--	--	--	--	--	--	--	--	--	--	--	--	--	--	--	--	--	--	--	--	--	--	--	--	--	--	--	--	--	--	--	--	--	--	--	--	--	--	--	--	--	--	--	--	--	--	--	--	--	--	--	--	--	--	--	--	--	--	--	--	--	--	--	--	--	--	--	--	--	--	--	--	--	--	--	--	--	--	--	--	--	--	--	--	--	--	--	--	--	--	--	--	--	--	--	--	--	--	--	--	--	--	--	--	--	--	--	--	--	--	--	--	--	--	--	--	--	--	--	--	--	--	--	--	--	--	--	--	--	--	--	--	--	--	--	--	--	--	--	--	--	--	--	--	--	--	--	--	--	--	--	--	--	--	--	--	--	--	--	--	--	--	--	--	--	--	--	--	--	--	--	--	--	--	--	--	--	--	--	--	--	--	--	--	--	--	--	--	--	--	--	--	--	--	--	--	--	--	--	--	--	--	--	--	--	--	--	--	--	--	--	--	--	--	--	--	--	--	--	--	--	--	--	--	--	--	--	--	--	--	--	--	--	--	--	--	--	--	--	--	--	--	--	--	--	--	--	--	--	--	--	--	--	--	--	--	--	--	--	--	--	--	--	--	--	--	--	--	--	--	--	--	--	--	--	--	--	--	--	--	--	--	--	--	--	--	--	--	--	--	--	--	--	--	--	--	--	--	--	--	--	--	--	--	--	--	--	--	--	--	--	--	--	--	--	--	--	--	--	--	--	--	--	--	--	--	--	--	--	--	--	--	--	--	--	--	--	--	--	--	--	--	--	--	--	--	--	--	--	--	--	--	--	--	--	--	--	--	--	--	--	--	--	--	--	--	--	--	--	--	--	--	--	--	--	--	--	--	--	--	--	--	--	--	--	--	--	--	--	--	--	--	--	--	--	--	--	--	--	--	--	--	--	--	--	--	--	--	--	--	--	--	--	--	--	--	--	--	--	--	--	--	--	--	--	--	--	--	--	--	--	--	--	--	--	--	--	--	--	--	--	--	--	--	--	--	--	--	--	--	--	--	--	--	--	--	--	--	--	--	--	--	--	--	--	--	--	--	--	--	--	--	--	--	--	--	--	--	--	--	--	--	--	--	--	--	--	--	--	--	--	--	--	--	--	--	--	--	--	--	--	--	--	--	--	--	--	--	--	--	--	--	--	--	--	--	--	--	--	--	--	--	--	--	--	--	--	--	--	--	--	--	--	--	--	--	--	--	--	--	--	--	--	--	--	--	--	--	--	--	--	--	--	--	--	--	--	--	--	--	--	--	--	--	--	--	--	--	--	--	--	--	--	--	--	--	--	--	--	--	--	--	--	--	--	--	--	--	--	--	--	--	--	--	--	--	--	--	--	--	--	--	--	--	--	--	--	--	--	--	--	--	--	--	--	--	--	--	--	--	--	--	--	--	--	--	--	--	--	--	--	--	--	--	--	--	--	--	--	--	--	--	--	--	--	--	--	--	--	--	--	--	--	--	--	--	--	--	--	--	--	--	--	--	--	--	--	--	--	--	--	--	--	--	--	--	--	--	--	--	--	--	--	--	--	--	--	--	--	--	--	--	--	--	--	--	--	--	--	--	--	--	--	--	--	--	--	--	--	--	--	--	--	--	--	--	--	--	--	--	--	--	--	--	--	--	--	--	--	--	--	--	--	--	--	--	--	--	--	--	--	--	--	--	--	--	--	--	--	--	--	--	--	--	--	--	--	--	--	--	--	--	--	--	--	--	--	--	--	--	--	--	--	--	--	--	--	--	--	--	--	--	--	--	--	--	--	--	--	--	--	--	--	--	--	--	--	--	--	--	--	--	--	--	--	--	--	--	--	--	--	--	--	--	--	--	--	--	--	--	--	--	--	--	--	--	--	--	--	--	--	--	--	--	--	--	--	--	--	--	--	--	--	--	--	--	--	--	--	--	--	--	--	--	--	--	--	--	--	--	--	--	--	--	--	--	--	--	--	--	--	--	--	--	--	--	--	--	--	--	--	--	--	--	--	--	--	--	--	--	--	--	--	--	--	--	--	--	--	--	--	--	--	--	--	--	--	--	--	--	--	--	--	--	--	--	--	--	--	--	--	--	--	--	--	--	--	--	--	--	--	--	--	--	--	--	--	--	--	--	--	--	--	--	--	--	--	--	--	--	--	--	--	--	--	--	--	--	--	--	--	--	--	--	--	--	--	--	--	--	--	--	--	--	--	--	--	--	--	--	--	--	--	--	--	--	--	--	--	--	--	--	--	--	--	--	--	--	--	--	--	--	--	--	--	--	--	--	--	--	--	--	--	--	--	--	--	--	--	--	--	--	--	--	--	--	--	--	--	--	--	--	--	--	--	--	--	--	--	--	--	--	--	--	--	--	--	--	--	--	--	--	--	--	--	--	--	--	--	--	--	--	--	--	--	--	--	--	--	--	--	--	--	--	--	--	--	--	--	--	--	--	--	--	--	--	--	--	--	--	--	--	--	--	--	--	--	--	--	--	--	--	--	--	--	--	--	--	--	--	--	--	--	--	--	--	--	--	--	--	--	--	--	--	--	--	--	--	--	--	--	--	--	--	--	--	--	--	--	--	--	--	--	--	--	--	--	--	--	--	--	--	--	--



ARTIS SINGLE PLANE, 9390 160KVA UPS

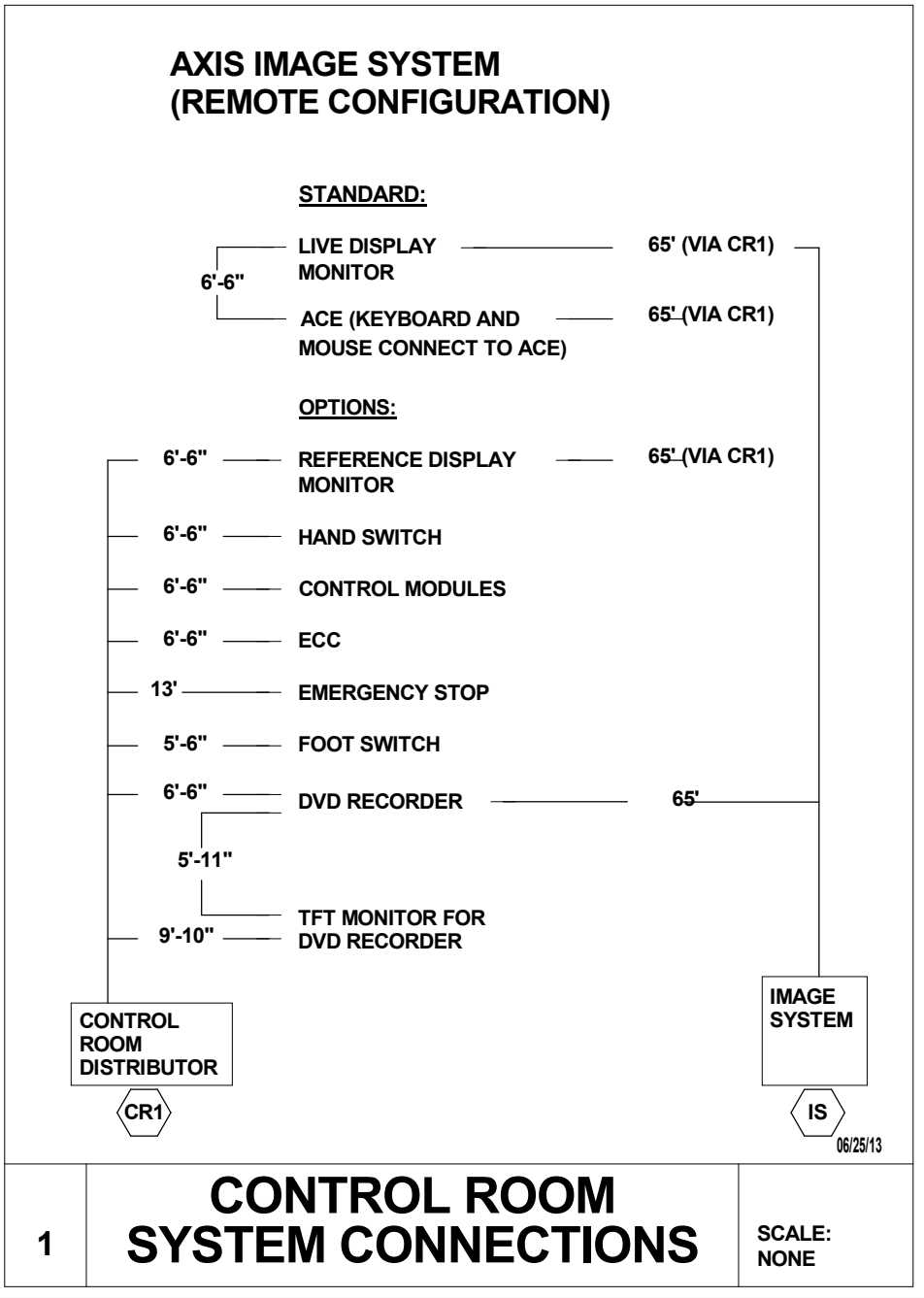
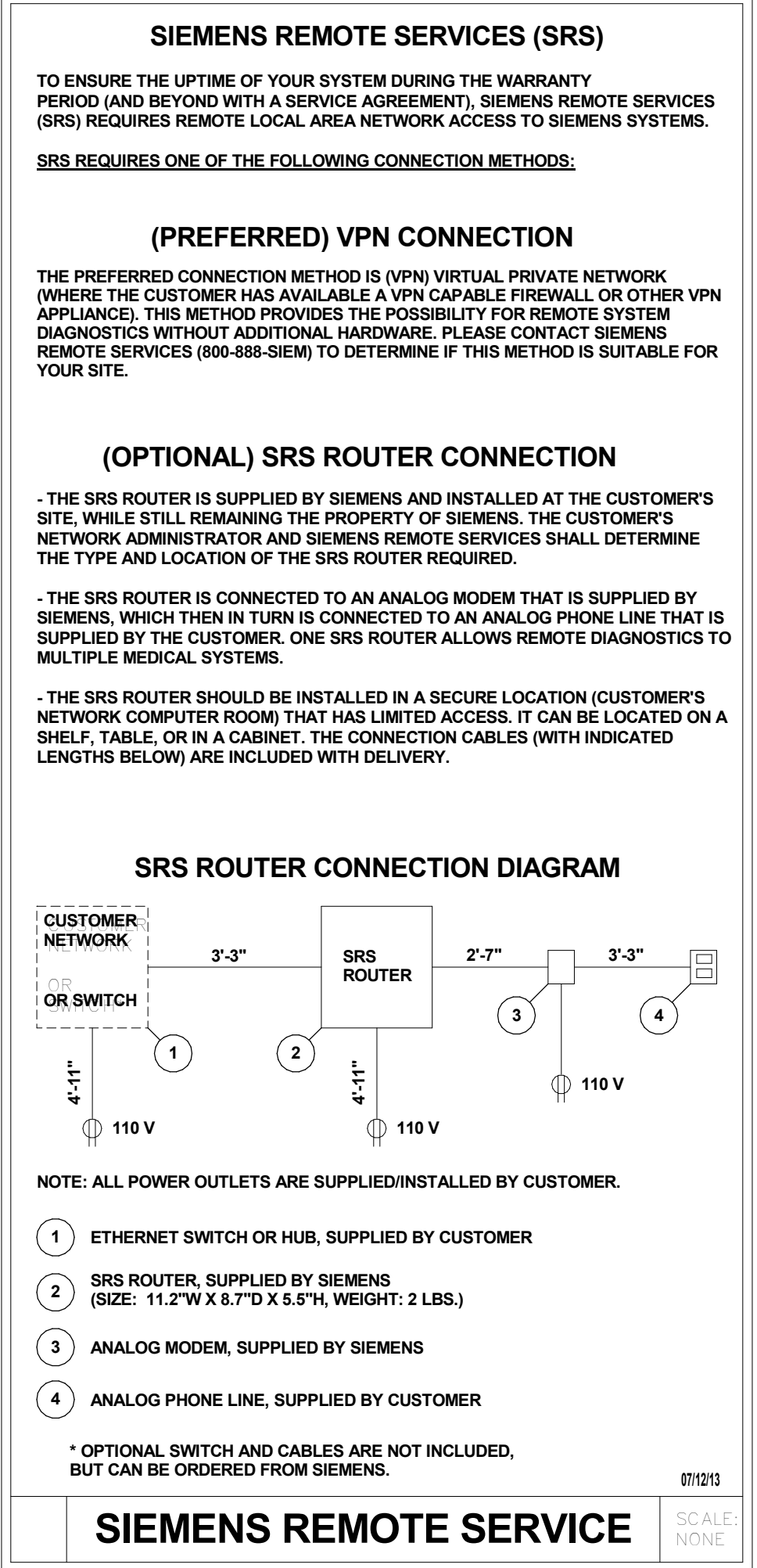


ELECTRICAL CONTRACTOR SUPPLIED CABLES						
FROM	VIA	TO	DESCRIPTION	REMARKS	NOTE	
PANEL	1	MD1	REFER TO E400 ONE-LINE DIAGRAM	SEE "POWER SCHEDULE"	1	
MD1	2	UPS	REFER TO E400 ONE-LINE DIAGRAM	SEE "POWER SCHEDULE"	1	
UPS	3	MP	REFER TO E400 ONE-LINE DIAGRAM	SEE "POWER SCHEDULE"	1	
MP	4	RMP	REFER TO E400 ONE-LINE DIAGRAM	SEE "POWER SCHEDULE"	1	
RMP	5	UPS	4#14-18 (SHIELDED TWISTED PAIR) UP TO 500'	SEE "POWER SCHEDULE"	1	
EPO	6	UPS	2#12, PLUS GROUND	SEE "POWER SCHEDULE"	1	
MP	7	PU1	3#2, 1#2 GROUND AND CONNECT	SEE "POWER SCHEDULE"	1	
MP	8	SC1	3#6, 1#6 NEUTRAL, 1#6 GROUND AND CONNECT	SEE "POWER SCHEDULE"	1	
MP	9	EPO	2#12, PLUS GROUND	SEE "POWER SCHEDULE"	1	
EPO	10	EPO	2#12, PLUS GROUND	EMERGENCY POWER	1	
SC1	11	WL	14-18 AWG	SEE "LIGHTING DETAIL" SHEET E510	1	
SC1	12	DS	3#12, PLUS GROUND	DOOR SWITCH	1	
PANEL	13	TF	REFER TO E400 ONE-LINE DIAGRAM	TABLE OUTLET	1	
PANEL	14	SU	REFER TO EQUIPMENT CONNECTION "SU" ON GENERAL EQUIPMENT SCHEDULE, SHEET E600	SURGERY LIGHT	1	

SIEMENS SUPPLIED CABLES						
FROM	VIA	TO	DESCRIPTION	REMARKS	NOTE	
P1	CD1,VD1	PU1	P1 LEFT HAND SIDE	MAXIMUM LENGTH 41'	2	
P1	CD1,VD1	PU1	(2) HIGH VOLTAGE CABLES P1 LEFT HAND SIDE	MAXIMUM LENGTH 41'	2	
P1	CD1,VD1	SC1	P1 LEFT HAND SIDE	MAXIMUM LENGTH 37'	2	
P1	15	CU1	FOR LIQUID COOLING HOSES (P1 LEFT HAND SIDE)	MAXIMUM LENGTH 77'	2	
SC1	SC2,16,CRB,HD1	CR1	FOR CONTROL ROOM OPTIONS (CONTROL MODULES, FOOT SWITCH, DISPLAY, ETC)	MAXIMUM LENGTH 62'	2	
SC1	SC2,17	T1	NOT WITH OR TABLE	MAXIMUM LENGTH 45'	2	
SC1	VD1,19	CU1		MAXIMUM LENGTH 96'	2	
SC1	INTERNAL	PU1		MAXIMUM LENGTH 16'	2	
SC1	VD1,CD1,CD2,VD3	IS	ACE CABLE SET IN EQUIPMENT ROOM	MAXIMUM LENGTH 60'	2	
SC1	VD1,CD1,CD2	D1	USE WITH ANY DCS	MAXIMUM LENGTH 52'	2	
IS	VD3,CD2,CD1,CD2	D1	NOT WITH DCS LD	MAXIMUM LENGTH 71'	2	
IS	VD3,CD2,CD1,CD2	D1		MAXIMUM LENGTH 71'	2	
IS	IS2,19,CRB,HD1	CR1	ACE CABLE SET IN EQUIPMENT ROOM	MAXIMUM LENGTH 61'	2	
IS	IS2,20,CRB,HD1	CR1	ACE CABLE SET IN EQUIPMENT ROOM	MAXIMUM LENGTH 61'	2	
CRB	21	T1	VOLCANO IVUS (VOLCANO S51 CABLE SET)	MAXIMUM LENGTH 98'	2	
CR1	HD1,VD2,22	IC	INTERCOM PROCEDURE ROOM MICROPHONE	MAXIMUM LENGTH 82'	2	
CR1	HD1,VD2,23	IC2	INTERCOM PROCEDURE ROOM LOUDSPEAKER	MAXIMUM LENGTH 82'	2	
T1	24	B10			2	
CRB	25	B10	CUSTOMER PATIENT MONITORING, ETC.		2	
TF	26, SC1	T1	TABLE POWER OUTLET	MAXIMUM LENGTH 91'	2	
IS	VD3,27	CUSTOMER MONITOR	LIVE-REF VIDEO INTERFACE TO OEM	MAXIMUM LENGTH 110'	2	

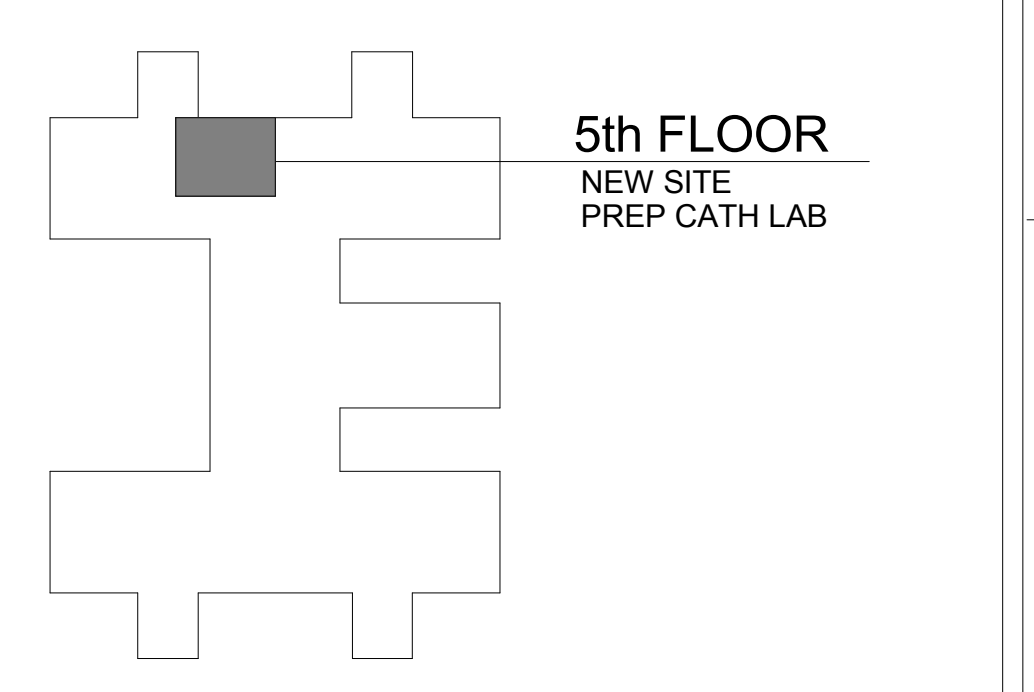
NOTES -

1. CABLES PROVIDED BY ELECTRICAL CONTRACTOR.
2. CABLES PROVIDED BY SIEMENS.



1 ELECTRICAL CABLING DETAIL

E511 NOT TO SCALE

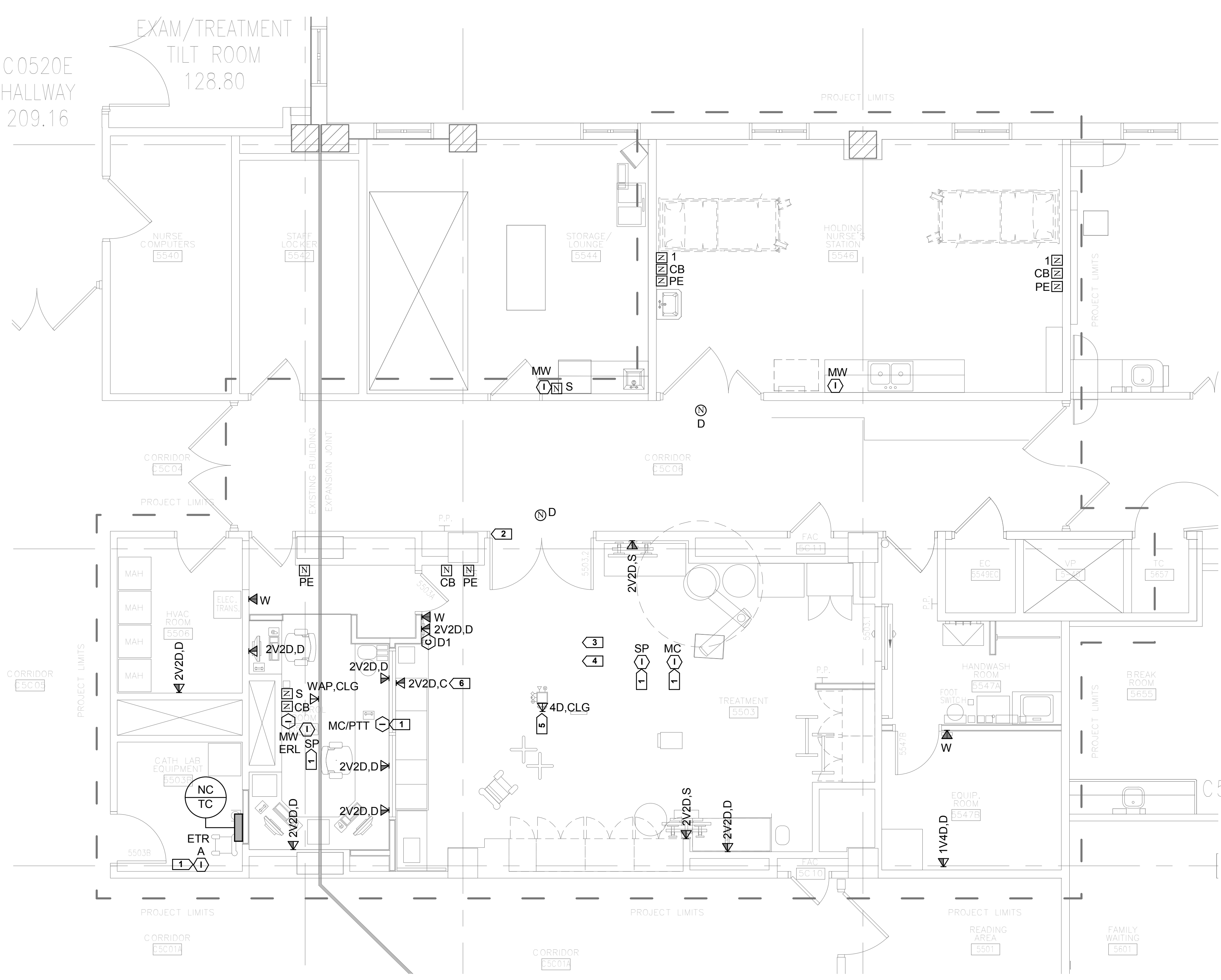


PROJECT KEY PLAN: →

100% CONSTRUCTION DOCUMENTS

				CONSULTANTS:		PROJECT LEADER/ARCHITECT:		Drawing Title ELECTRIC CABLING DETAIL		Project Title Building 111 - Site Prep Cath Lab		Project Number 695-14-112		Office of Facilities Management			
Revisions:		Date		www.thesigmagroup.com 1300 West Canal Street Milwaukee, WI 53233 Phone: 414-643-4200 Fax: 414-643-4210		AP RING & DUCHATEAU 17400 W. Capitol Drive Brookfield, WI 53045 Phone: 414-778-1700 Fax: 414-778-2360 r.d@ringdu.com THIS BAR IS 1" LONG IF IT MEASURES ANYTHING OTHER THAN 1" ADJUST SCALE ACCORDINGLY. R&D Project No.: 214145				Approved: Project Director		Location VA Medical Center, Milwaukee, WI		Drawing Number 111			
										Date 30 March 2015		Checked By:		Drawn By:		E511	
										Checker		Author					

three inches = one foot
one and one half inches = one foot
one inch = one foot
three quarters inch = one foot
one half inch = one foot
three eighths inch = one foot
one quarter inch = one foot
one eighth inch = one foot



1 FIFTH FLOOR PLAN - TECHNOLOGY
ET205 / 1/4" = 1'-0"

- SHEET NOTES -**
- PRIOR TO CORING OR CUTTING CONCRETE SLAB, X-RAY SLAB TO DETERMINE EXISTING CONDUIT PLACEMENT WITHIN THE SLAB.
 - SEE SHEET A001 FOR PROJECT PHASING DRAWINGS AND NOTES.
 - REFER TO E105 FOR LOCATION OF TELEPHONE CLOSET SERVING VOICE AND DATA OUTLETS SHOWN ON THIS PLAN.
 - SYMBOLS LIST MAY NOT INCLUDE ALL SYMBOLS INDICATED ON THIS SHEET. FOR A COMPLETE LIST OF SYMBOLS, PLEASE REFERENCE SHEET ET000.
 - FOR ANY WORK TO BE COMPLETED ON THE 4TH FLOOR, THE FOLLOWING SHALL APPLY: ACCESS TO 4TH FLOOR WOULD BE 7PM TO 7AM AND ONLY ONE TEAM ROOM PER NIGHT.

- KEYED NOTES -**
- REFER TO 1/ET600 CATH LAB 2-WAY COMMUNICATION SYSTEM DETAIL.
 - DOOR SWITCH, WIRE DOOR SWITCH INTERFACE PER SHEETS E510, E511, AND E512.
 - REFER TO SHEETS E510, E511, AND E512 FOR ANY ADDITIONAL WORK ASSOCIATED WITH THE CATH LAB EQUIPMENT BEING INSTALLED, INCLUDING BUT NOT LIMITED TO DUCTS, JUNCTION BOXES, CONDUITS, CIRCUIT BREAKERS, CONDUCTORS, LIGHTS, AND SWITCHES. ELECTRICAL WORK REQUIRED BY THESE DRAWINGS SHALL BE INCLUDED AS PART OF THE ELECTRICAL CONTRACTOR'S WORKS.
 - REFER TO DETAIL 4/E500 FOR ANY PENETRATIONS INTO EXISTING LEAD-LINED WALL.
 - DATA FOR SIEMENS CEILING MONITOR BOOM VERIFY QUANTITY OF CABLES WITH MANUFACTURER.
 - INSTALLATION OF OUTLET REQUIRES CHANNELLING AND PATCHING OF WALL.

SYMBOLS:
(ALL SYMBOLS SHOWN MAY NOT APPEAR ON DRAWINGS)

PANELBOARD CABINET, SURFACE MOUNTED
 INDICATES DESIGNATION

PANELBOARD CABINET, FLUSH MOUNTED
 INDICATES DESIGNATION

KEYED NOTE SYMBOL

OUTLET, COMBINATION TELEPHONE/DATA COMMUNICATION
 INDICATES OUTLET CONFIGURATION. SEE THE TELECOMMUNICATIONS HORIZONTAL CABLING SCHEDULE FOR ADDITIONAL INFORMATION.
 INDICATES OUTLET MOUNTING HEIGHT.
(C) MOUNTED ABOVE COUNTER
(D) DESK TYPE (STANDARD MOUNTING HEIGHT)
(F) FLOOR (SEE POWER PLAN FOR FLOOR BOX OR POKE THRU LOCATION)
(M) MOUNTED IN MULTI-OUTLET ASSEMBLY SHOWN ON POWER PLAN
(S) SPECIAL MOUNTING HEIGHT EITHER INDICATED ON THE DRAWINGS OR AS INDICATED IN THE ASSOCIATED ARCHITECTURAL ELEVATIONS.
(T) TELEPOWER POLE (SEE POWER PLAN FOR TELEPOWER POLE LOCATION)
(W) WALL MOUNTED

INDICATES MOUNTING HEIGHT WHEN SHOWN.
 FLOOR RECEPTACLE, TELEPHONE

OUTLET TELEPHONE; LETTER INDICATES AS FOLLOWS:
 INDICATES OUTLET MOUNTING HEIGHT.
(C) MOUNTED ABOVE COUNTER
(D) DESK TYPE (STANDARD MOUNTING HEIGHT)
(J) JACK TYPE
(M) MOUNTED IN MULTI-OUTLET ASSEMBLY SHOWN ON POWER PLAN
(S) SPECIAL MOUNTING HEIGHT EITHER INDICATED ON THE DRAWINGS OR AS INDICATED IN THE ASSOCIATED ARCHITECTURAL ELEVATIONS.
(W) WALL MOUNTED

INDICATES MOUNTING HEIGHT WHEN SHOWN.
 OUTLET DATA ONLY
 INDICATES OUTLET CONFIGURATION. SEE THE TELECOMMUNICATIONS HORIZONTAL CABLING SCHEDULE FOR ADDITIONAL INFORMATION.
 INDICATES OUTLET MOUNTING HEIGHT.
(C) MOUNTED ABOVE COUNTER
(CLG) CEILING
(D) DESK TYPE (STANDARD MOUNTING HEIGHT)
(J) JACK TYPE
(M) MOUNTED IN MULTI-OUTLET ASSEMBLY SHOWN ON POWER PLAN
(S) SPECIAL MOUNTING HEIGHT EITHER INDICATED ON THE DRAWINGS OR AS INDICATED IN THE ASSOCIATED ARCHITECTURAL ELEVATIONS.
(W) WALL MOUNTED

INDICATES MOUNTING HEIGHT WHEN SHOWN.

CLOCK SYSTEM
 DENOTES THE FOLLOWING:
(A1) ANALOG TYPE, 12" DIAMETER ROUND, SINGLE FACED
(A2) ANALOG TYPE, 9" DIAMETER ROUND, SINGLE FACED
(A3) ANALOG TYPE, 12" DIAMETER ROUND, DOUBLE FACED
(A4) ANALOG TYPE, 9" DIAMETER ROUND, DOUBLE FACED
(AT) ANTENNA
(D1) DIGITAL TYPE, SINGLE FACED (HR-MIN-SEC)
(D2) DIGITAL TYPE, SINGLE FACED (HR-MIN)
(ET) ELAPSE TIMER
(EC) ELAPSE TIMER CONTROL
(GPS) GPS CLOCK SYSTEM
(RP) REPEATER

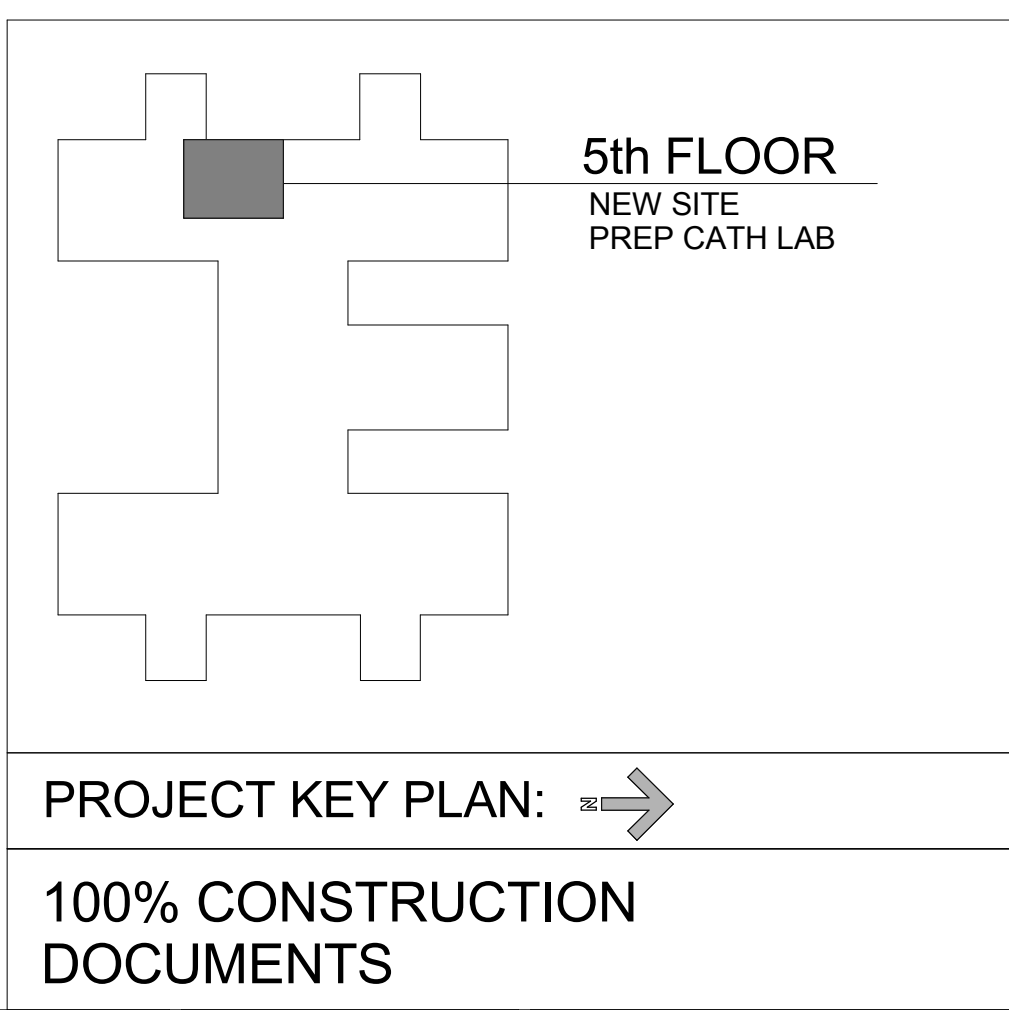
INTERCOM SYSTEM
 DENOTES THE FOLLOWING:
(A) AMPLIFIER
(C) CONTROL STATION
(MC) MICROPHONE
(MC/PTT) MICROPHONE/PUSH TO TALK
(MD) MASTER STATION - DESK MOUNTED
(MW) MASTER STATION - WALL MOUNTED
(SD) SLAVE STATION - DESK MOUNTED
(SP) SPEAKER
(SGR) STENTORFON TO OR-2 (SALVAGE)
(SW) SLAVE STATION - WALL MOUNTED

NURSE CALL STATION
 DENOTES THE FOLLOWING:
(1) SINGLE PATIENT STATION
(B) BED INTERFACE STATION
(CB) CODE BLUE STATION
(D) DUTY STATION
(E) EMERGENCY SHOWER, TUB, OR TOILET LOCATION
(H) ENHANCED DUTY STATION
(PE) PUSH-FOR-HELP STATION (EMERGENCY)
(S) STAFF TERMINAL

NURSE CALL STATION DOME LIGHTS
 DENOTES THE FOLLOWING:
(S) NURSE'S CALL DOME LIGHT (SUFFIX INDICATES No OF LAMP).
(D) CORRIDOR DOME LIGHT.
(I) AUXILIARY INTERSECTIONAL DOME LIGHT.

NURSE CALL MASTER STATION

NURSE CALL TERMINAL



 Revisions: _____ Date _____	 Dept. of Veterans Affairs Medical Center 5000 W. National Avenue Milwaukee, WI		CONSULTANTS: www.thesigmagroup.com 1300 West Canal Street Milwaukee, WI 53233 Phone: 414-643-4200 Fax: 414-643-4210	 17400 W. Capitol Drive Brookfield, WI 53045 Phone: 414-778-1700 / Fax: 414-778-2360 / r.d@ringdu.com THIS BAR IS 1" LONG IF IT MEASURES ANYTHING OTHER THAN 1" ADJUST SCALE ACCORDINGLY RAD Project No. 214146	PROJECT LEADER/ARCHITECT: ASHLAND, WI 217 8th Street West Ashland, WI 54806 Phone: (715) 682-0634 Fax: (715) 682-0625 MILWAUKEE, WI 301 N. Superior Road Suite 100 Milwaukee, WI 53205 Phone: (414) 258-0504 Fax: (414) 258-0154	Drawing Title BUILDING 111 - FIFTH FLOOR PLAN - TECHNOLOGY	Project Title Building 111 - Site Prep Cath Lab	Project Number 695-14-112	Office of Facilities Management
						Approved: Project Director	Location VA Medical Center, Milwaukee, WI	Date 30 March 2015	



CABLE SPECIFICATIONS NOTES:



- 1 CATH LAB 2-WAY COMMUNICATIONS SYSTEM DETAIL**
ET600 NOT TO SCALE



	<p>CONSULTANTS:</p> <p>THE SIGMA GROUP <i>Single Source. Sound Solutions.</i></p> <p>www.thesigmagroup.com 1300 West Canal Street Milwaukee, WI 53233 Phone: 414-643-4200 Fax: 414-643-4210</p>	<p>PD RING & BROOCHÉ</p> <p>17400 W. Capitol Drive Brookfield, WI 53045 Phone: 414.778.1700 / Fax: 414.778.2360 / e:ring@ringco.com</p> <p>THIS BAR IS 1" LONG.</p> <p>IF IT MEASURES ANYTHING OTHER THAN 1" ADJUST SCALE ACCORDINGLY</p> <p>R&D Project No: 214148</p>
---	--	--

<div> <div>PROJECT LEADER/ARCHITECT:</div> <div>  <div> <div>CHEQUAMEGON BAY</div> <div>ENGINEERING, INC.</div> </div> </div> </div> <div> <div> <div> <div>ASSAIND, WI</div> <div>211 Elm Street West</div> <div>Antigo, WI 54609</div> <div>Phone: (715) 624-6000</div> <div>Fax: (715) 624-6000</div> </div> <div> <div>MILWAUKEE, WI</div> <div>211 N. Master Road</div> <div>Suite 100</div> <div>Milwaukee, WI 53226</div> <div>Phone: (414) 226-0004</div> <div>Fax: (414) 226-0004</div> </div> </div> </div>	<div> <div>Drawing Title</div> <div>TECHNOLOGY SCHEDULES</div> <div>AND DETAILS</div> </div> <div> <div>Approved: Project Director</div> </div>	<div> <div>Project Title</div> <div>Building 111 - Site Prep Cath Lab</div> </div> <div> <div>Location</div> <div>VA Medical Center, Milwaukee, WI</div> </div> <div> <div>Date</div> <div>30 March 2015</div> </div>	<div> <div>Checked By:</div> <div>MIKE MCGANN PE</div> </div> <div> <div>Drawn By:</div> <div>RD</div> </div>	<div> <div>Project Number</div> <div>695-14-112</div> </div> <div> <div>Building Number</div> <div>111</div> </div> <div> <div>Drawing Number</div> <div>ET600</div> </div>	<div> <div>Office of</div> <div>Facilities</div> <div>Management</div> </div> <div> <div>  <div>Department of Veterans Affairs</div> </div> </div>