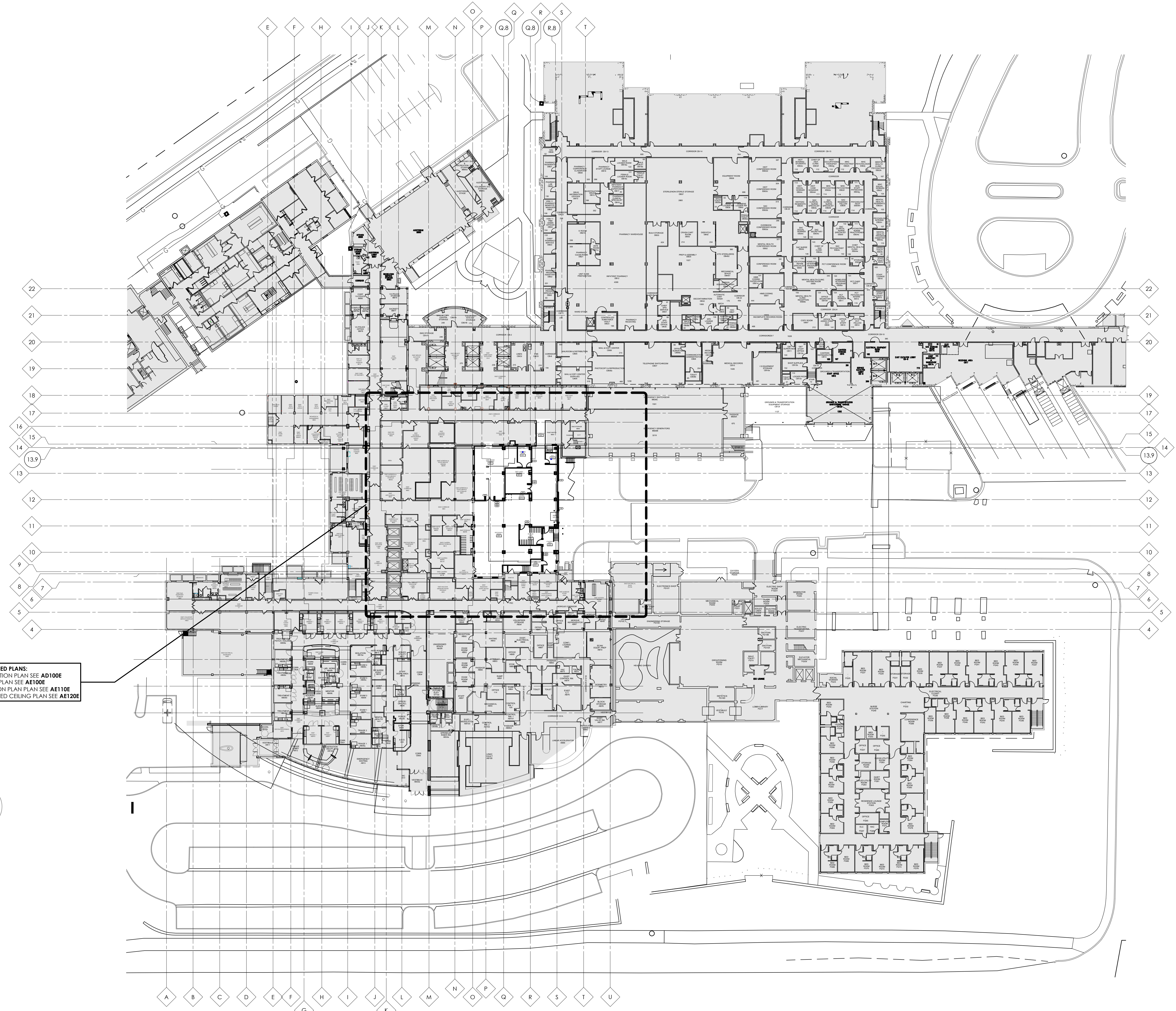


three inches = one foot  
one and one half inches = one foot  
one inch = one foot  
three quarters inch = one foot  
one half inch = one foot  
three eighths inch = one foot  
one quarter inch = one foot  
one eighth inch = one foot



BASEMENT COMPOSITE PLAN  
1/32" = 1'-0"

CONSTRUCTION DOCUMENTS  
FULLY SPRINKLERED

|                     |  |   |  |   |  |  |  |  |  |  |  |   |  |
|---------------------|--|---|--|---|--|--|--|--|--|--|--|---|--|
| <b>KEY PLAN</b><br> |  | <b>ARCHITECT/ENGINEERS:</b><br><br><b>Albert Kahn Associates, Inc.</b><br>Albert Kahn Building<br>7430 Second Ave.<br>Detroit, Michigan 48202-2798<br>Albert Kahn Associates, Inc. is a member of the Albert Kahn Family of Companies. © 2007<br>ALBERT KAHN JOB # 0092-L0000 |  | <b>MIDWESTERN CONSULTING</b><br><br>Civil, Environmental and Transportation Engineers<br>Planners, Surveyors<br>Landscape Architects<br>3815 Plaza Drive<br>Ann Arbor, Michigan 48108<br>Phone: 734.995.0200<br>Fax: 734.995.0599 |  | <b>Drawing Title</b><br>COMPOSITE BASEMENT PLAN<br><br><b>Approved:</b><br>P. GARLAND<br>P. POWICZ |  | <b>Project Title</b><br>DEPARTMENT OF VETERANS AFFAIRS<br>CONSTRUCT CLINICAL SUPPORT<br>AND LOGISTICS CENTER<br><br><b>Location</b><br>ANN ARBOR, MICHIGAN<br><br><b>Date</b><br>09-29-14<br><b>Checked</b><br>KJ, ZT<br><b>Drawn</b><br>RPH |  | <b>Project Number</b><br>506-326<br><b>Building Number</b><br>1W<br><b>Drawing Number</b><br>AE100<br>Dwg. 25 of 159 |  | <b>Office of Construction and Facilities Management</b><br> |  |
|---------------------|--|---|--|---|--|--|--|--|--|--|--|---|--|