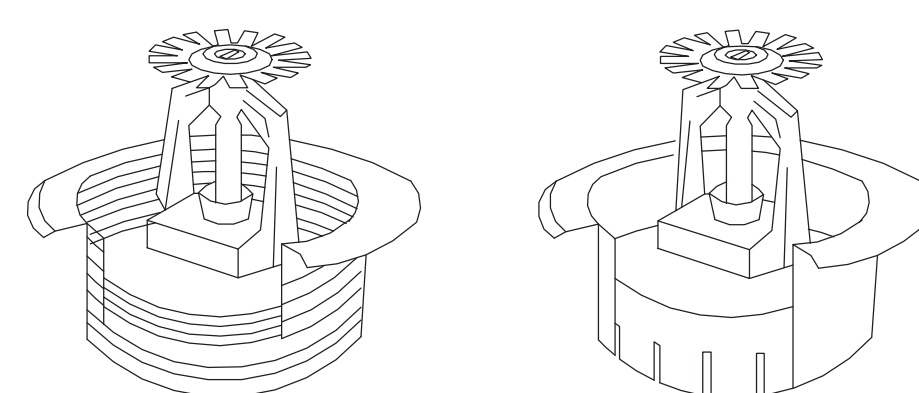


1 EXISTING TO REMAIN, UNLESS OTHERWISE INDICATED

- 1 EXISTING TO REMAIN, UNLESS OTHERWISE INDICATED.
- 2 RELOCATE EXISTING SPRINKLER(S) AND ESCUTCHEON(S) IN AREA INDICATED TO
- 3 PROVIDE REQUIRED COVERAGE IN CONFORMANCE WITH NFPA 13.
- 4
- 5 RELOCATE EXISTING SPRINKLER(S) IN AREA INDICATED TO AVOID PATIENT LIFT TRACK
- 6 OBSTRUCTIONS. COORDINATE ALL WORK WITH EXISTING LOCATION OF PATIENT LIFT
- 7 TRACK AND ALL EXTRANEOUS STRUCTURAL MEMBERS AND SUPPORTS.
- 8
- 9 PROVIDE ESCUTCHEONS FOR EXISTING SPRINKLER(S) IN AREA INDICATED. NEW
- 10 ESCUTCHEONS SHALL BE COORDINATED WITH EXISTING QUICK RESPONSE SPRINKLER
- 11 TO MAINTAIN UL LISTING AND FM APPROVAL.

STATIC PRESSURE: 70 PSI  
RESIDUAL PRESSURE: 66 PSI  
FLOW RATE: 1052 GPM  
DATE: JUNE 19, 2014



NOTE: MATCH NEW ESCUTCHEON WITH EXISTING AND SHALL MAINTAIN UL LISTING AND FM APPROVAL.

Scale: N.T.S



Scale: 1/16" = 1'-0"

[illegible]

**Heapy Engineering**  
MEP Design Technology Planning Commissioning Energy  
*Nationally Recognized Leader in Sustainability*  
1400 W Dorothy Lane, Dayton, OH 45409-1310  
Ph 937-224-0861 Fax 937-224-5777 [www.heapy.com](http://www.heapy.com)  
HEAPY PROJECT No.: 2014-04020 FIRM LICENSE No.: 01528




**ASA**  
ALAN SCHERR ASSOCIATES  
33 WEST FIRST STREET  
SUITE NUMBER 440  
DAYTON, OHIO 45402  
PH: 937 - 222-4585  
FX: 937 - 222-4520

FIFTH FLOOR PLAN - NEW WORK

REPLACE SPRINKLER HEADS			
Location DAYTON, OHIO			
Date 11/07/2014	Checked RLT	Drawn DPB	

Project No.	VA Project No. 552-16-203
Building Number	330
Drawing Number	330FX105
Dwg. of	

Office of  
Construction  
and Facilities  
Management

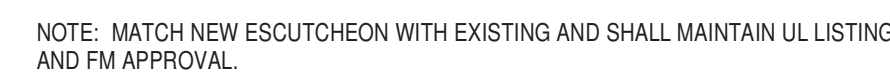
 Department of  
Veterans Affairs



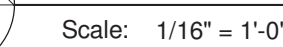
1 EXISTING TO REMAIN, UNLESS OTHERWISE INDICATED

- 2 PROVIDE NEW ESCUTCHEON FOR EXISTING SPRINKLER IN AREA INDICATED. COORDINATE NEW ESCUTCHEON WITH EXISTING QUICK RESPONSE SPRINKLER TO MAINTAIN UL LISTING AND FM APPROVAL.

STATIC PRESSURE: 70 PSI  
RESIDUAL PRESSURE: 66 PSI  
FLOW RATE: 1052 GPM  
DATE: JUNE 19, 2014



## Scale: N.T.S.

[illegible]

**Heapy Engineering**  
MEP Design Technology Planning Commissioning Energy

***Nationally Recognized Leader in Sustainability***  
1400 W Dorothy Lane, Dayton, OH 45409-1310  
Ph 937-224-0861 Fax 937-224-5777 [www.heapy.com](http://www.heapy.com)



ASA

**ALAN SCHERR ASSOCIATE**  
33 WEST FIRST STREET  
SUITE NUMBER 440  
DAYTON, OHIO 45402  
PH: 937 - 222-4585  
FX: 937 - 222-4520

SIXTH FLOOR PLAN - NEW WORK

## REPLACE SPRINKLER HEADS

Location	DAYTON, OHIO
----------	--------------

Date	11/07/2014
------	------------

Checked	RLT
---------	-----

Drawn  
DPI

Project No. \_\_\_\_\_  
VA Project No. 552-16-20

Building Number  
**330**

330FX106

Office of  
Construction  
and Facilities  
Management





three inches = one foot  
one and one-half inches = one foot  
one inch = one foot  
three-quarters inch = one foot  
one-half inch = one foot  
three-eighths inch = one foot  
one-quarter inch = one foot  
one-eighth inch = one foot

A  
B  
C  
D  
E  
F  
G

1  
2  
3  
4  
5  
6  
7  
8  
9

11/6/2014 2:13:53 PM

Revisions  
Date

CONSULTANTS:

Heapy Engineering  
MEP Design Technology Planning Commissioning Energy  
Nationally Recognized Leader In Sustainability  
1400 W Dorothy Lane, Dayton, OH 45409-1310  
Ph 937-224-0861 Fax 937-224-5777 www.heapy.com  
HEAPY PROJECT No.: 2014-04020 FIRM LICENSE No.: 91528

ARCHITECT/ENGINEERS:

ASA  
ALAN SCHERR ASSOCIATES  
33 WEST FIRST STREET  
SUITE NUMBER 440  
DAYTON, OHIO 45402  
PH: 937-222-4505  
FX: 937-222-4520

Drawing Title

SEVENTH FLOOR PLAN - NEW WORK

Approved: Project Director

Project Title

REPLACE SPRINKLER HEADS

Location

DAYTON, OHIO

Date

11/07/2014

Checked

RLT

Drawn

DPB

Project No.

VA Project No. 552-16-203

Building Number

330

Drawing Number

330FX107

Dwg. of

Office of Construction and Facilities Management  
Department of Veterans Affairs

GENERAL NOTES

A REFER TO SHEET FX001 FOR FIRE SUPPRESSION SYSTEM DESIGN NOTES.

PLAN NOTES

1 REPLACE EXISTING WET-PIPE FIRE SUPPRESSION "INSTITUTIONAL" TYPE SPRINKLERS AND ESCUTCHEONS WITH NEW SPRINKLERS AND ESCUTCHEONS IN AREAS INDICATED. THE INTENT OF THE PROJECT IS TO REPLACE SPRINKLERS AND ESCUTCHEONS ONE-FOR-ONE. IF DIVISION 21 CONTRACTOR SHOULD OBSERVE A DEFICIENT NUMBER OF OR SURPLUS NUMBER OF SPRINKLERS SERVING ANY SPACE, CONTRACTOR SHALL REPLACE EXISTING SPRINKLERS) AND PROVIDE DOCUMENTED INFORMATION INCLUDING BUT NOT LIMITED TO: LOCATION OF SPACE, DEFICIENCY/EXCEPTION, AND RECOMMENDED ACTION TO THE PROJECT COR IN TABULAR FORM.

2 REPLACE EXISTING WET-PIPE FIRE SUPPRESSION PENDENT TYPE SPRINKLERS AND ESCUTCHEONS WITH NEW SPRINKLERS AND ESCUTCHEONS IN AREAS INDICATED. THE INTENT OF THE PROJECT IS TO REPLACE SPRINKLERS AND ESCUTCHEONS ONE-FOR-ONE. IF DIVISION 21 CONTRACTOR SHOULD OBSERVE A DEFICIENT NUMBER OF OR SURPLUS NUMBER OF SPRINKLERS SERVING ANY SPACE, CONTRACTOR SHALL REPLACE EXISTING SPRINKLERS) AND PROVIDE DOCUMENTED INFORMATION INCLUDING BUT NOT LIMITED TO: LOCATION OF SPACE, DEFICIENCY/EXCEPTION, AND RECOMMENDED ACTION TO THE PROJECT COR IN TABULAR FORM.

FLOW TEST DATA

STATIC PRESSURE: 70 PSI  
RESIDUAL PRESSURE: 66 PSI  
FLOW RATE: 1052 GPM  
DATE: JUNE 19, 2014

AREA OF WORK

KEYPLAN

Scale: 1" = 800'-0"

SEVENTH FLOOR PLAN

Scale: 1/16" = 1'-0"

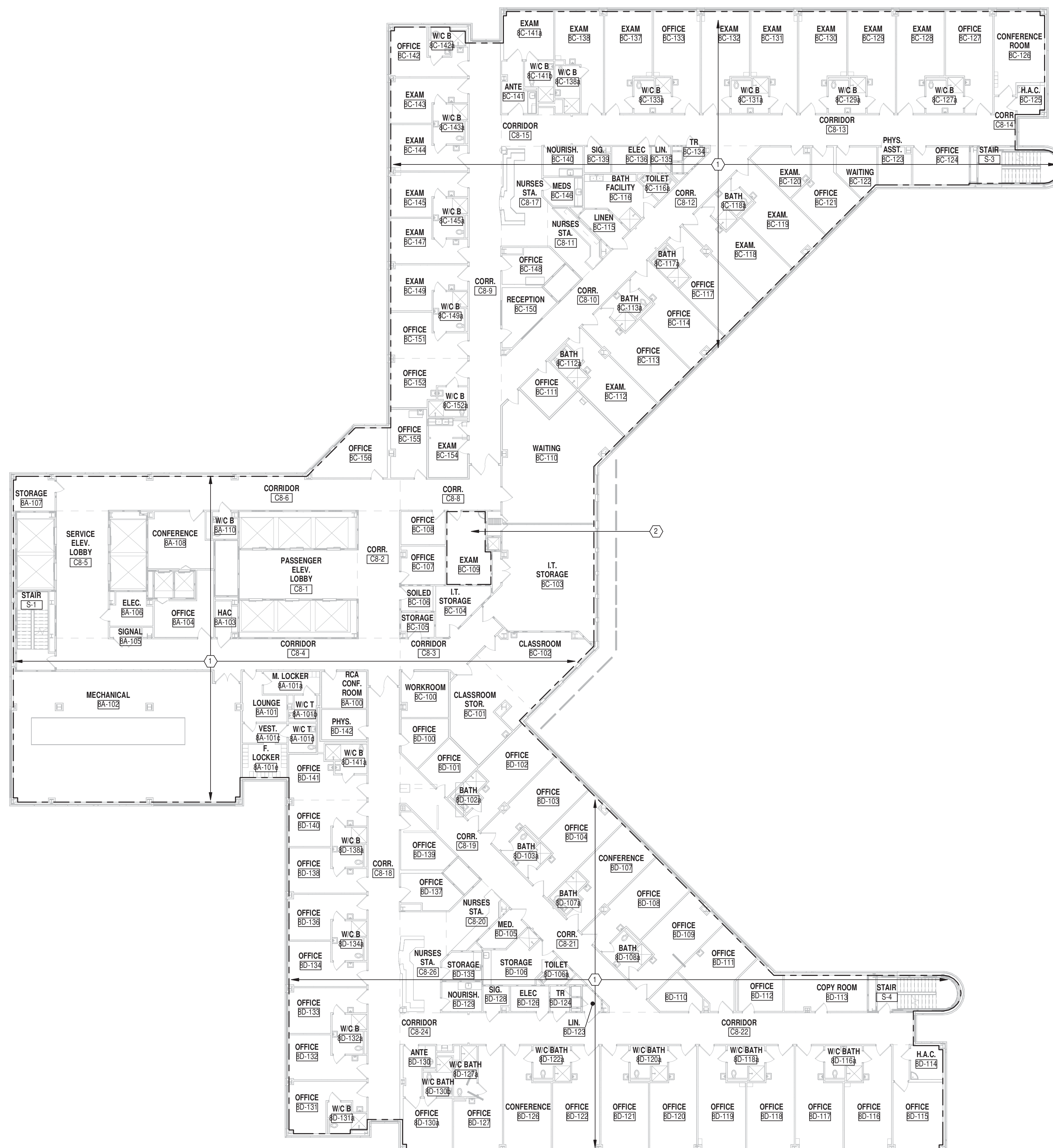
TYPICAL INSTITUTIONAL SPRINKLER

Scale: N.T.S.

NOTE: UPON SPRINKLER ACTIVATION, THE DEFLECTOR DESCENDS APPROXIMATELY 1/4" BELOW THE SPRINKLER BODY.

1/2" NIPPLE  
1" x 1/2" REDUCER  
RETAINING FLANGE TO PREVENT SPRINKLER MOVEMENT  
1/4" ADJUSTMENT  
3-1/4" DIAM.





 **EIGHTH**  
Scale: 1/16" = 1'-0"

## GENERAL NOTES

A REFER TO SHEET FX001 FOR FIRE SUPPRESSION SYSTEM DESIGN NOTES.

## PLAN NOTES

- 2 RELOCATE EXISTING SPRINKLER(S) IN AREA INDICATED TO MAINTAIN MINIMUM SPACING REQUIREMENTS IN CONFORMANCE WITH NFPA 13 - 8.5.3.

## FLOW TEST DATA

STATIC PRESSURE: 70 PSI  
RESIDUAL PRESSURE: 66 PSI  
FLOW RATE: 1052 GPM  
DATE: JUNE 19, 2014

[illegible]

CONSULTANTS:



ARCHITECT/ENGINEERS:



	Drawing Title
--	---------------

EIGHTH FLOOR PLAN - NEW WORK

Project Title
---------------

## REPLACE SPRINKLER HEADS

Location	DAYTON, OHIO
----------	--------------

Date 11/07/2014

Checked	BIT
---------	-----

Drawn	DPB
-------	-----

Project No.	VA Project No. 552-16-203
-------------	---------------------------

Building Number  
**330**

Drawing Number

330FX108

Office of  
Construction  
and Facilities  
Management





1. REPLACE EXISTING WET-PIPE FIRE SUPPRESSION SPRINKLERS AND ESCUTCHEONS WITH NEW SPRINKLERS AND ESCUTCHEONS IN AREAS/ INDICATED. THE INTENT OF THE PROJECT IS TO REPLACE SPRINKLERS AND ESCUTCHEONS ONE-FOR-ONE. IF DIVISION 2 CONTRACTOR WOULD REQUIRE A DIFFERENT NUMBER OF OR SURPLUS NUMBER OF SPRINKLERS SERVING ANY SPACE, CONTRACTOR SHALL REPLACE EXISTING SPRINKLERS) AND PROVIDE DOCUMENTED INFORMATION NOTATION BUT NOT LATER THAN 15 DAYS PRIOR TO ANY AGENCY EXCEPTION, AND RECOMMENDED ACTION TO THE PROJECT OR IN TABULAR FORM.
2. PROVIDE ADDITIONAL NEW SPRINKLER(S) AND ESCUTCHEON(S) AS REQUIRED IN AREA INDICATED SERVED FROM EXISTING WET-PIPE FIRE SUPPRESSION SPRINKLER SYSTEM SERVING ADJACENT SPACE ROOM TO PROVIDE PROPER COVERAGE OR DENSITY.
3. PROVIDE NEW SPRINKLER(S) AND ESCUTCHEON(S) LOCATED TO MAINTAIN MINIMUM SPACING BETWEEN SPRINKLERS AND AVOID OBSTRUCTIONS IN CONFORMANCE WITH NFPA 13. AREA INDICATED.

STATIC PRESSURE: 70 PSI  
RESIDUAL PRESSURE: 66 PSI  
FLOW RATE: 1052 GPM  
DATE: JUNE 19, 2014



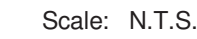
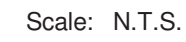
**DELETE ALL WORK IN THIS BUILDING UNDER  
BID ITEM 3 (DEDUCT ALTERNATE #2)**

[illegible]





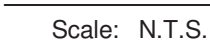
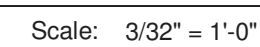




A REFER TO SHEET FX001 FOR FIRE SUPPRESSION SYSTEM DESIGN NOTES.

- 1 REPLACE EXISTING PENDENT TYPE SPRINKLERS AND ESCUTCHEONS ONE-FOR-ONE WITH UPRIGHT TYPE SPRINKLERS AND ESCUTCHEONS IN AREA(S) OPEN TO STRUCTURE WHERE INDICATED.
- 2 EXISTING SPRINKLER MAINS AND BRANCH PIPING TO REMAIN. THE INTENT OF PROJECT IS TO REPLACE PENDENT TYPE SPRINKLERS ONE-FOR-ONE WITH UPRIGHT TYPE SPRINKLERS. MODIFY EXISTING ARM-OVER PIPING AS REQUIRED TO ACCOMMODATE THIS CHANGE AND ASSURE THAT CLEARANCES FROM STRUCTURAL MEMBERS ARE IN CONFORMANCE WITH NFPA 13, SECTION 8.5.3.
- 3 EXISTING TO REMAIN.
- 4 BASEMENT SPRINKLER SYSTEM ZONE VALVE LOCATED ABOVE CORRIDOR CEILING OUTSIDE OF STAIR #W3.

STATIC PRESSURE: 70 PSI  
RESIDUAL PRESSURE: 66 PSI  
FLOW RATE: 1021 GPM  
DATE: JUNE 18, 2014

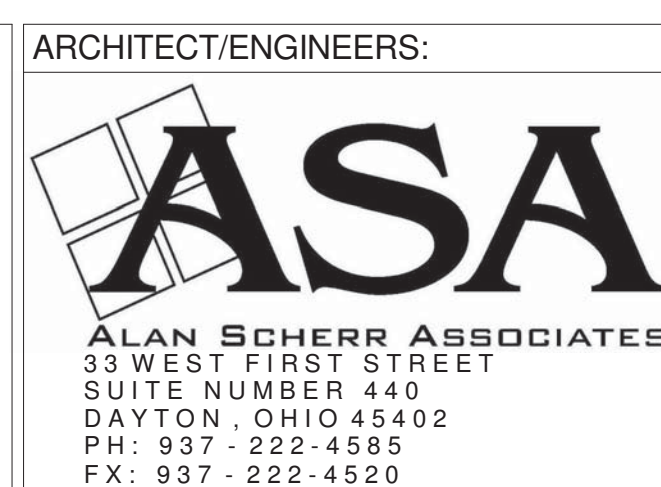



CONSULTANTS:



**Heapy Engineering**  
MEP Design Technology Planning Commissioning Energy  
*Nationally Recognized Leader in Sustainability*  
1400 W Dorothy Lane, Dayton, OH 45409-1310  
Ph 937-224-0861 Fax 937-224-5777 [www.heapy.com](http://www.heapy.com)

HEAPY PROJECT No.: 2014-04020 FIRM LICENSE No.: 01528



Project Title			Project No.		<div>Office of Construction and Facilities Management</div> <div>  <div>Department of Veterans Affairs</div> </div>
REPLACE SPRINKLER HEADS			VA Project No. 552-16-203		
Location DAYTON, OHIO			Building Number 409		
			Drawing Number 409FX100		
Date	11/07/2014	Checked RLT	Drawn DPB	Dwg. of	



1 EXISTING TO REMAIN.

- 1 EXISTING TO REMAIN.
- 2 REPLACE EXISTING PENDENT TYPE SPRINKLERS AND ESCUTCHEONS ONE-FOR-ONE WITH UPRIGHT TYPE SPRINKLERS AND ESCUTCHEONS IN AREA(S) OPEN TO STRUCTURE WHERE INDICATED.
- 3 EXISTING SPRINKLERS MAIN AND BRANCH PIPING TO REMAIN. THE INTENT OF PROJECT IS REPLACE PENDENT TYPE SPRINKLERS ONE-FOR-ONE WITH UPRIGHT TYPE SPRINKLERS. MODIFY EXISTING ARM-OVERHEAD PIPING AS REQUIRED TO ACCOMMODATE THIS CHANGE AND ASSURE THAT CLEARANCES FROM STRUCTURAL MEMBERS ARE IN CONFORMANCE WITH NFPA 13, SECTION 8.5.3.
- 4 FIRST FLOOR SPRINKLER SYSTEM ZONE VALVE LOCATED ABOVE CORRIDOR CEILING OUTSIDE STAIR #5W3.

STATIC PRESSURE: 70 PSI  
 RESIDUAL PRESSURE: 66 PSI  
 FLOW RATE: 1021 GPM  
 DATE: JUNE 18, 2014

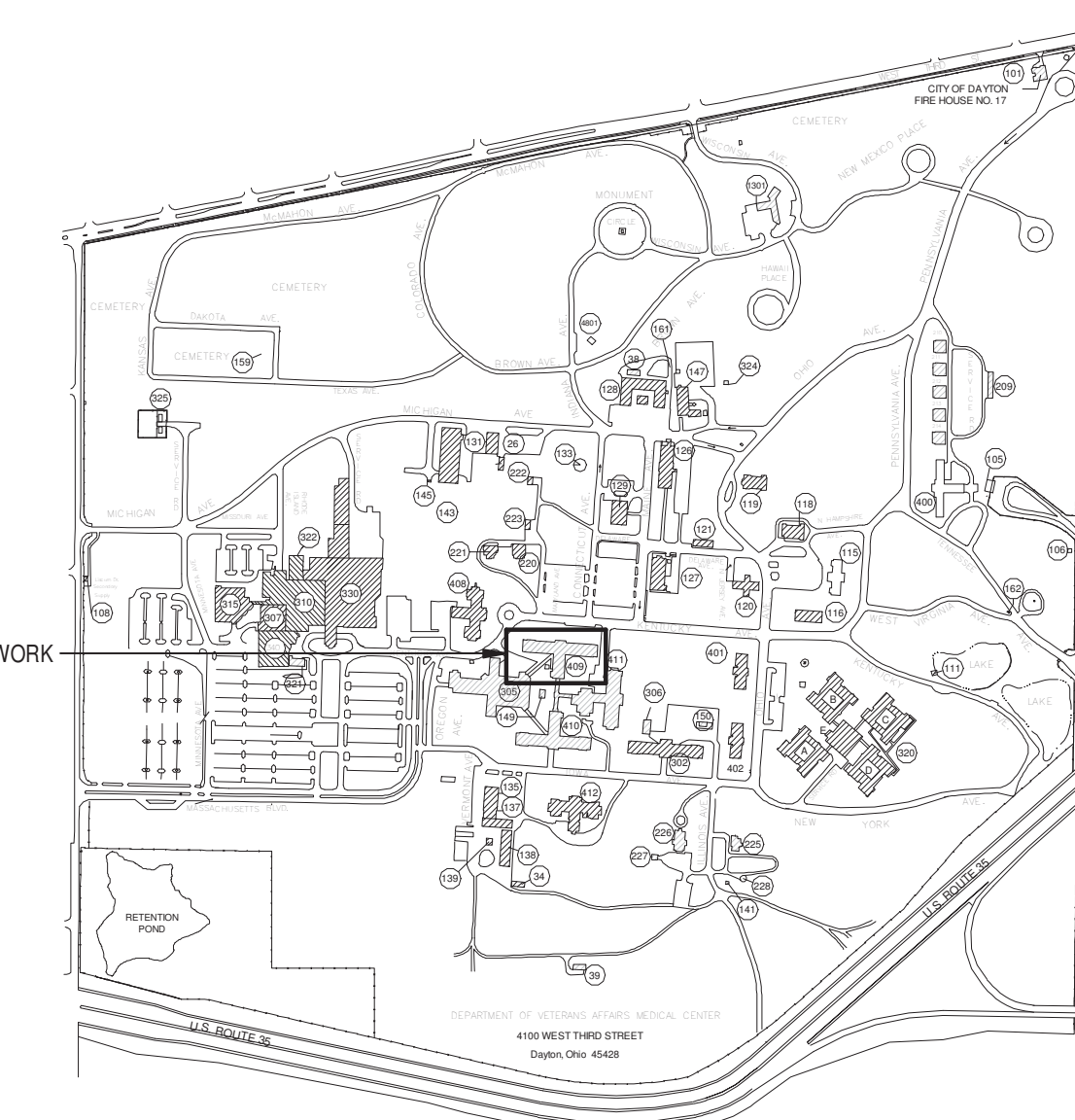


BLDG. 409 FIRST FLOOR



### FIRST FLOOR PLAN

Scale:  $3/32" = 1'-0"$



## KEYPLAN

Scale: 1" = 800'-0"

OWNER REVIEW - NOT FOR CONSTRUCTION

[illegible]



1 EXISTING TO REMAIN.

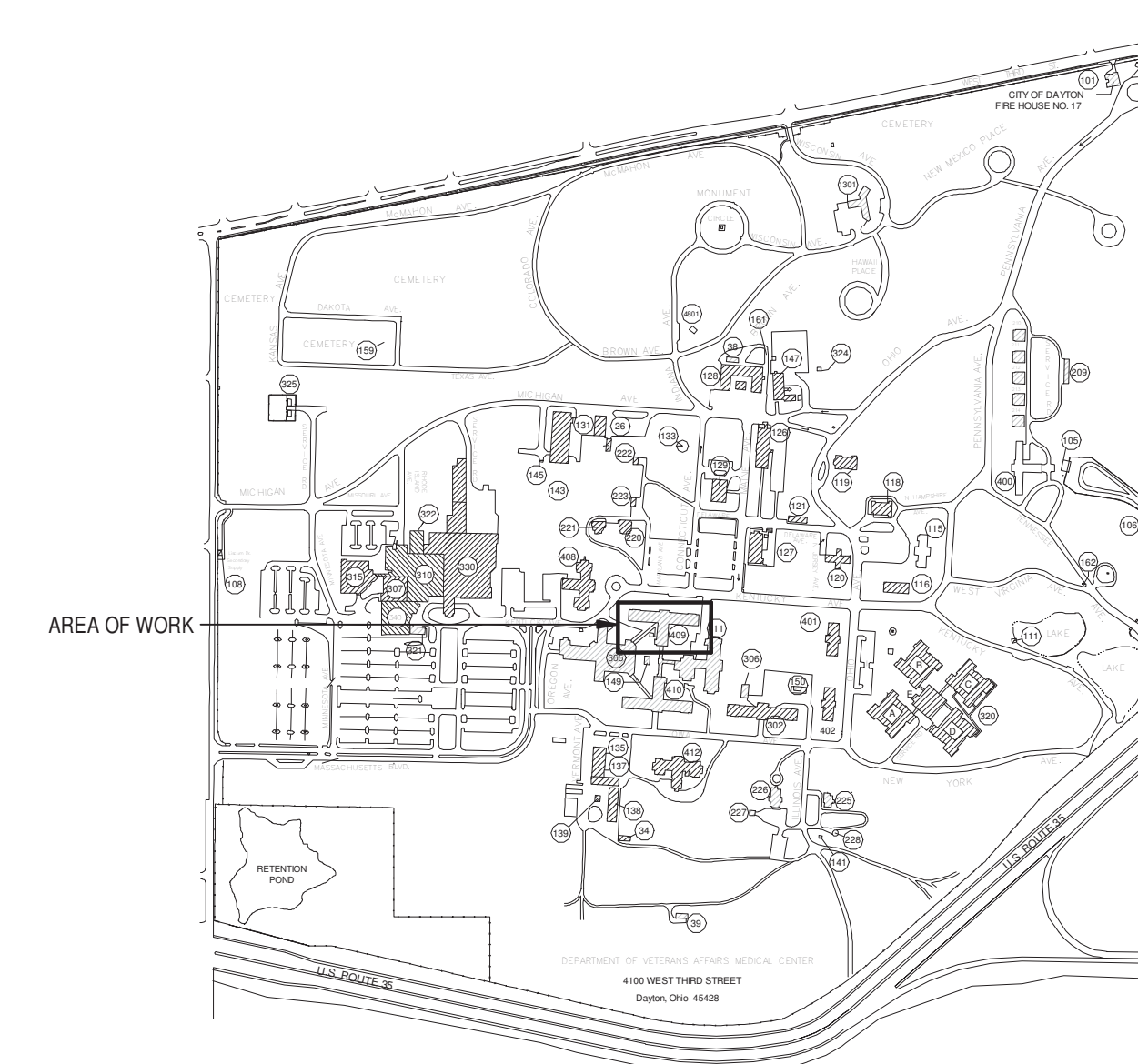
- 1 EXISTING TO REMAIN.
- 2 REPLACE EXISTING PENDENT TYPE SPRINKLERS AND ESCUTCHEONS ONE-FOR-ONE WITH UPRIGHT TYPE SPRINKLER TYPE SPRINKLERS AND ESCUTCHEONS IN AREAS OPEN TO STRUCTURE WHERE INDICATED.
- 3 EXISTING SPRINKLER MAINS AND BRANCH PIPING TO REMAIN. THE INTENT OF PROJECT IS REPLACE PENDENT TYPE SPRINKLERS ONE-FOR-ONE WITH UPRIGHT TYPE SPRINKLERS. MODIFY EXISTING ARM-OR-Pipe AS REQUIRED TO ACCOMMODATE CHANGE AND ASSURE THAT CLEARANCES FROM STRUCTURAL MEMBERS ARE IN CONFORMANCE WITH NFPA 13, SECTION 8.5.3.
- 4 SECOND FLOOR SPRINKLER SYSTEM ZONE VALVE LOCATED ABOVE CORRIDOR CEILING OUTSIDE STAIR SW-3.

STATIC PRESSURE: 70 PSI  
 RESIDUAL PRESSURE: 66 PSI  
 FLOW RATE: 1021 GPM  
 DATE: JUNE 18, 2014



Scale: N.T.S.

Scale:  $3/32" = 1'-0"$



Scale: 1" = 800'-0"

[illegible]



1 EXISTING TO REMAIN.

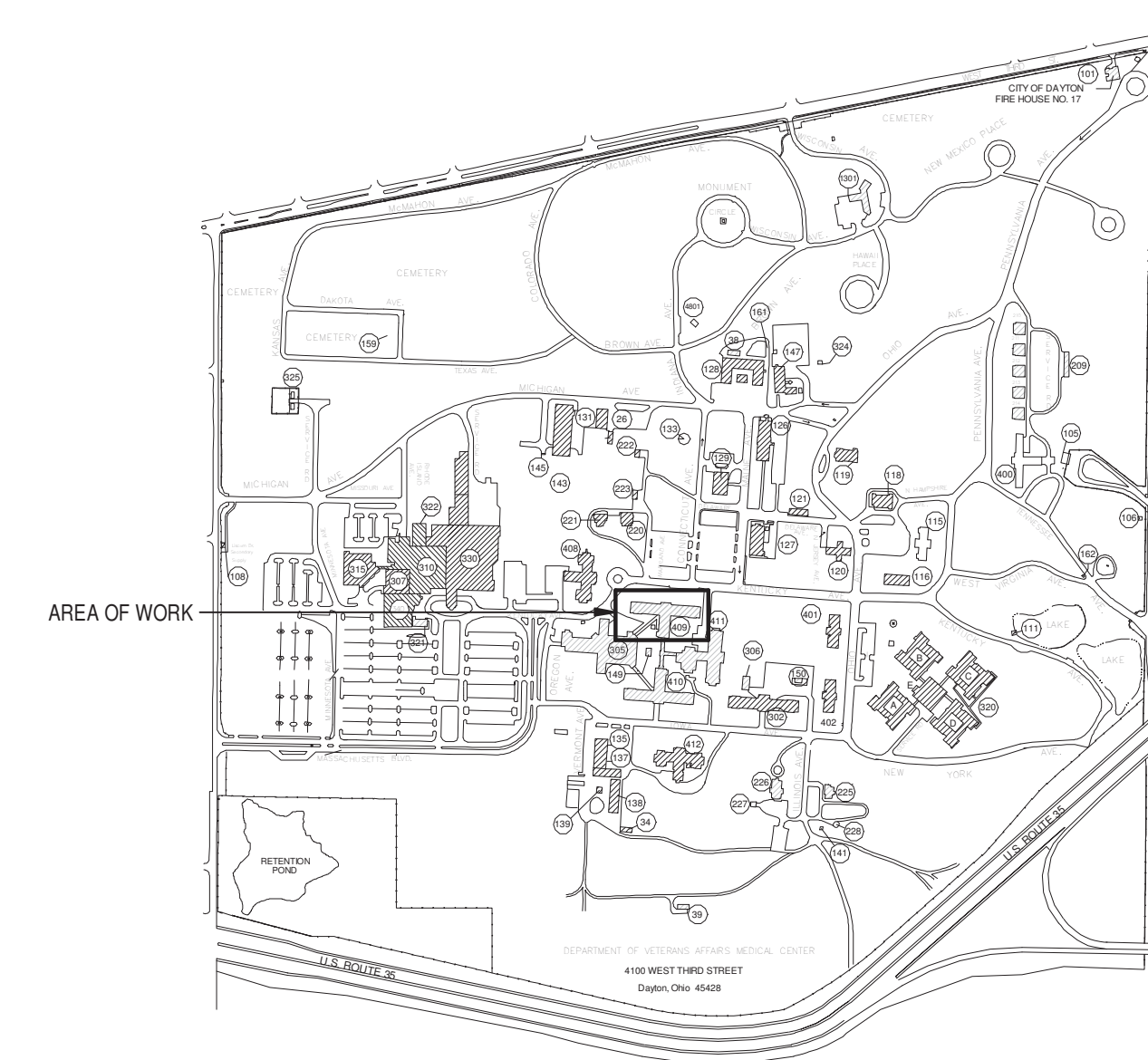
1. EXISTING TO REMAIN.
2. REPLACE EXISTING PENDENT TYPE SPRINKLERS AND ESCUTCHEONS ONE-FOR-ONE WITH UPRIGHT TYPE SPRINKLERS AND ESCUTCHEONS IN AREA(S) OPEN TO STRUCTURE WHERE INDICATED.
3. EXISTING SPRINKLER MAINS AND BRANCH PIPING TO REMAIN. THE INTENT OF PROJECT IS REPLACE PENDENT TYPE SPRINKLERS ONE-FOR-ONE WITH UPRIGHT TYPE SPRINKLERS. MODIFY EXISTING ARM-OVER SECTION AS REQUIRED TO ACCOMMODATE THIS CHANGE AND ASSURE THAT CLEARANCES FROM STRUCTURAL MEMBERS ARE IN CONFORMANCE WITH NFPA 13, CHAPTER 5.5.3.
4. THIRD FLOOR SPRINKLER SYSTEM ZONE VALVE LOCATED ABOVE CORRIDOR CEILING OUTSIDE STAIR #3W3.

STATIC PRESSURE: 70 PSI  
RESIDUAL PRESSURE: 66 PSI  
FLOW RATE: 1021 GPM  
DATE: JUNE 18, 2014



Scale: N.T.S.

Scale:  $3/32" = 1'-0"$



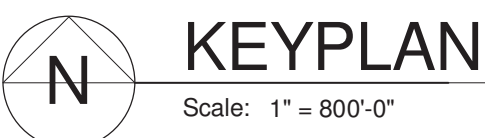
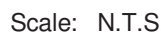
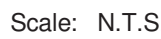
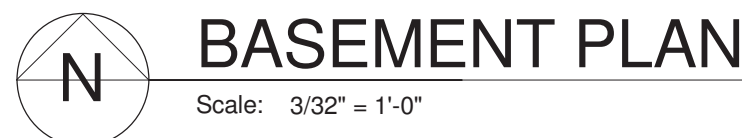
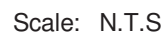
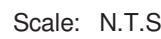
## KEYPLAN

[illegible]



- 1 REPLACE EXISTING PENDENT TYPE SPRINKLERS AND ESCUTCHEONS WITH UPRIGHT TYPE SPRINKLERS AND ESCUTCHEONS IN AREA(S) OPEN TO STRUCTURE WHERE INDICATED.
- 2 COORDINATE NEW PIPING AND SPRINKLERS WITH EXISTING PIPING AND CONDUIT FROM OTHER TRADES IN AREA INDICATED TO PROVIDE ADEQUATE SPRINKLER COVERAGE IN CONFORMANCE WITH NFPA 13.
- 3 EXISTING SPRINKLER MAIN PIPING TO REMAIN. MODIFY EXISTING BRANCH AND/OR ARM-OVER PIPING AS REQUIRED TO MODIFY SPRINKLERS.

STATIC PRESSURE: 68 PSI  
RESIDUAL PRESSURE: 64 PSI  
FLOW RATE: 1021 GPM  
DATE: JUNE 18, 2014



11/6/2014 2:19:44 PM			CONSULTANTS:		<div><div></div><div><b>Heapy Engineering</b></div><div>MEP Design Technology Planning Commissioning Energy</div><div><b>Nationally Recognized Leader in Sustainability</b></div><div>1400 W Dorothy Lane, Dayton, OH 45409-1310</div><div>Ph 937-224-0861 Fax 937-224-5777 www.heapy.com</div></div>		<div><div></div></div>		<div>ARCHITECT/ENGINEERS:</div> <div><div></div><div><b>ASA</b></div><div>ALAN SCHERR ASSOCIATES</div><div>33 WEST FIRST STREET</div><div>SUITE NUMBER 440</div><div>DAYTON, OHIO 45402</div><div>PH: 937-222-4565</div><div>FX: 937-222-4520</div></div>		<div>Drawing Title</div> <div>BASEMENT PLAN - NEW WORK</div>		<div>Project Title</div> <div>REPLACE SPRINKLER HEADS</div>		<div>Project No.</div> <div>VA Project No. 552-16-203</div>		<div>Office of Construction and Facilities Management</div> <div> Department of Veterans Affairs</div>	
							<div>Building Number</div> <div>410</div>		<div>Drawing Number</div> <div>410FX100</div>									
							<div>Location</div> <div>DAYTON, OHIO</div>		<div>Date</div> <div>11/07/2014</div>		<div>Checked by</div> <div>RLT</div>		<div>Drawn by</div> <div>DPB</div>					
	<div>Revisions</div>		<div>Date</div>		<div>HEAPY PROJECT NO.: 2014-04020</div> <div>FIRM LICENSE NO.: 01528</div>				<div>Approved: Project Director</div>				<div>Date</div> <div>11/07/2014</div>		<div>Checked by</div> <div>RLT</div>		<div>Drawn by</div> <div>DPB</div>	