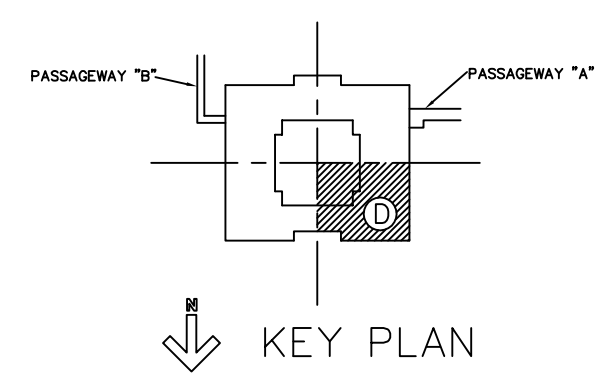
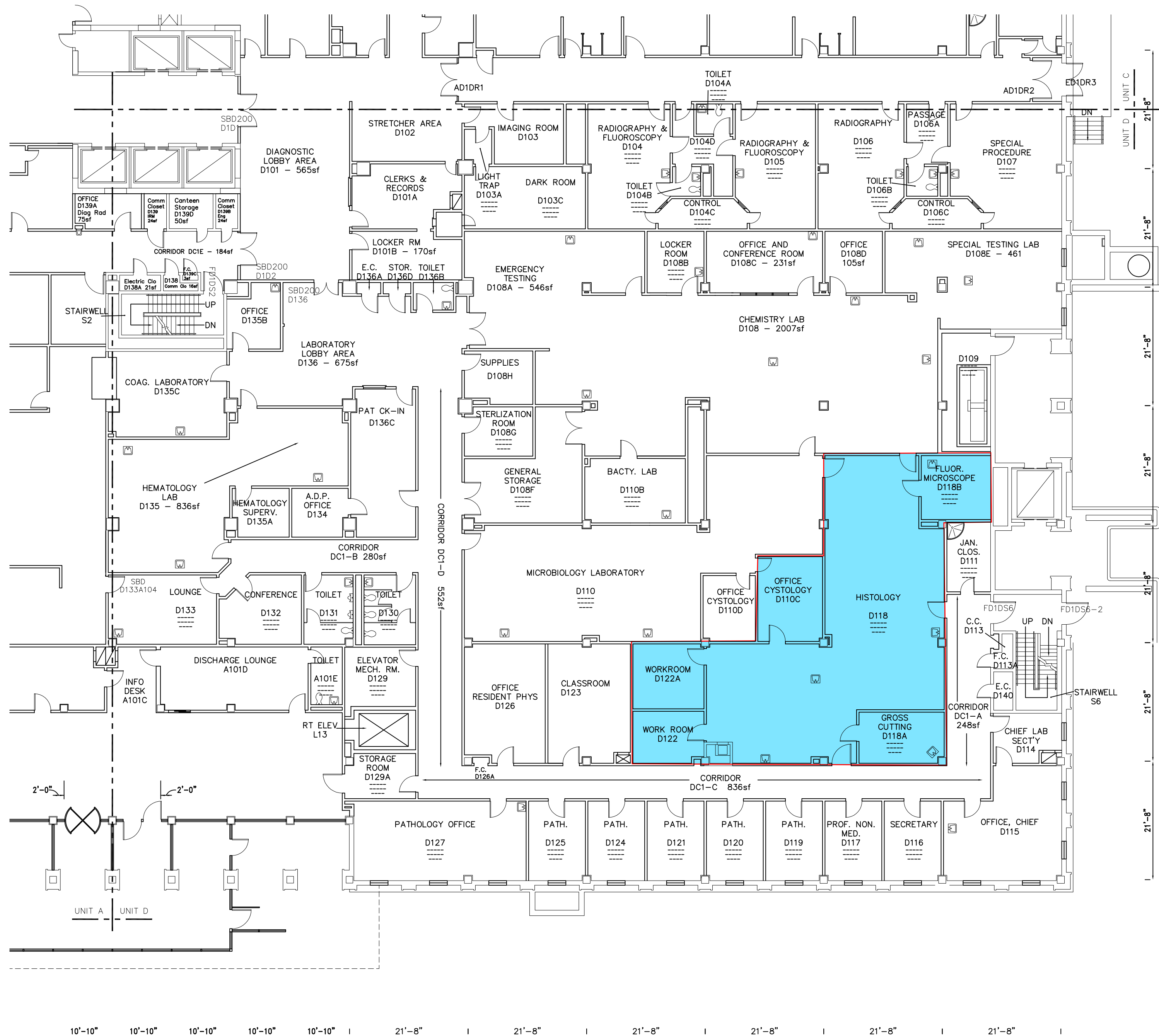


three inches = one foot
one and one-half inches = one foot
one inch = one foot
three-quarters inch = one foot
one-half inch = one foot
three-eighths inch = one foot
one-quarter inch = one foot
one-eighth inch = one foot



| | | | | | | | | |
|--------------------------------------|--|------|--|--|--------------------------------------|--------------|---------------------------------------|--|
| Revisions | | Date | Drawing Title 1ST FLOOR - SECTION "D" | | Project Title ----- ----- | | Date 10/26/92 Project No. ----- | |
| Approved: Division Chief | | | Building No. 200 | | Checked --- | Drawn --- | DRAWING NO. ----- | |
| Approved: Chief Maintenance & Repair | | | Approved: Service Director | | Location V.A. HOSPITAL, HINES, IL | | Dwg. -- of -- | |