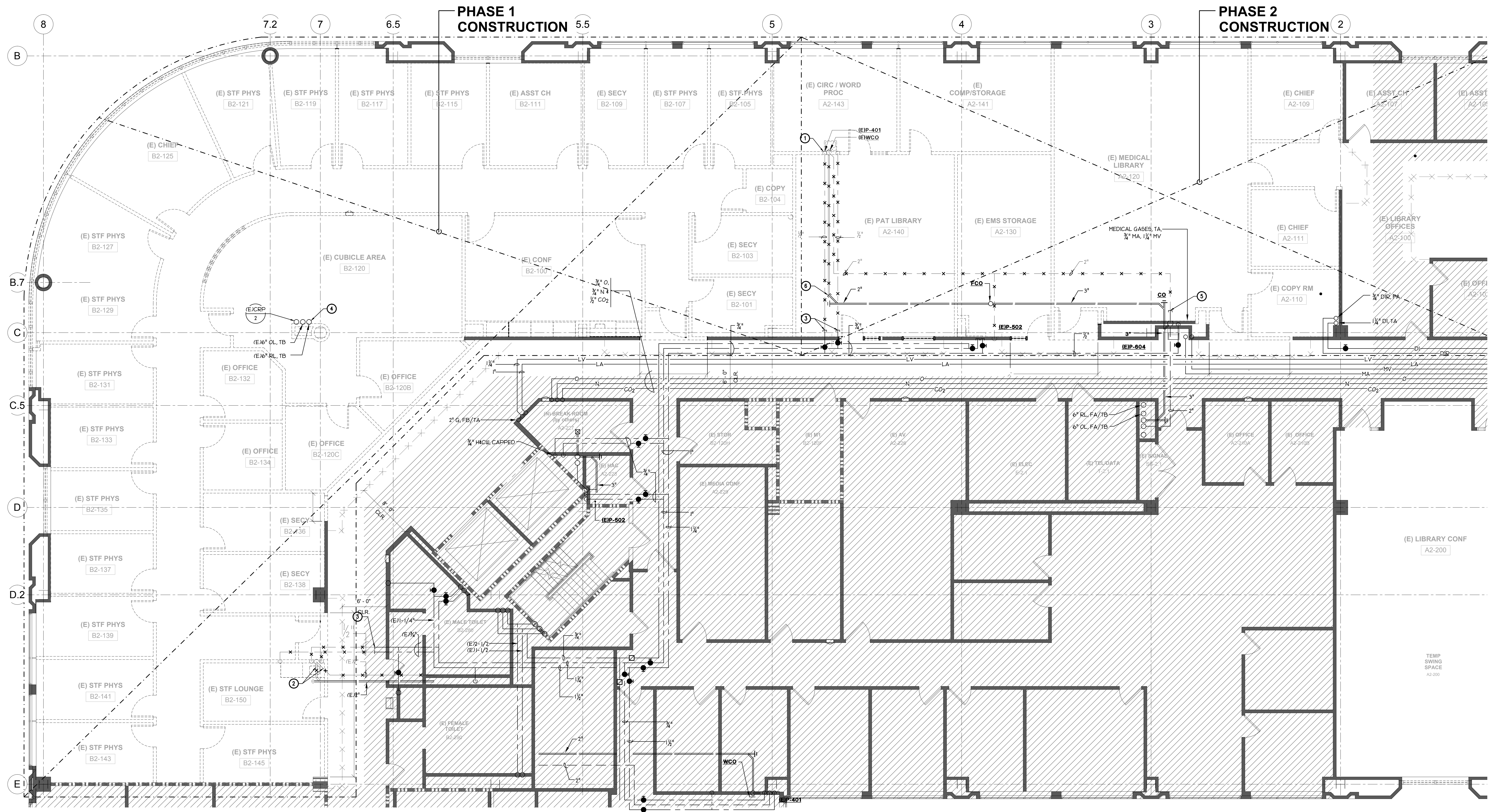


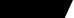


\\copaco\network\Project\_Doc\2013\130502.00\200 Drawings\1205 AutoCAD Project Files\14-P02.FRW - March 18, 2015 - IS - 28

- ① DEMO FIXTURE, CAP PLUMBING LINES IN WALL.
- ② PLUG EXISTING WASTE FROM SINK, REMOVE EXISTING 1-1/2" VENT PIPE BACK TO TOILET ROOM.
- ③ CAP EXISTING 3/4" H & CW ABOVE CEILING.
- ④ RELOCATE EXISTING 6" SD & OD, 4" CHEMICAL RESTRAINT PIPE. OFFSET ABOVE CEILING TO NEW WALL LOCATION. REPAIR EXISTING FLOOR OPENINGS.
- ⑤ CAP EXISTING VENT ABOVE CEILING.
- ⑥ CAP EXISTING WASTE BELOW SLAB.


$$3/16'' = 1'-0''$$

<b>Revisions:</b>	<b>Date</b>



**CAPITAL ENGINEERING  
CONSULTANTS, INC.**  
RANCHO CORDOVA, CALIFORNIA

CM - IB/TS  
PM - DESIGN TEAM

130502.00  
PROJECT NO.

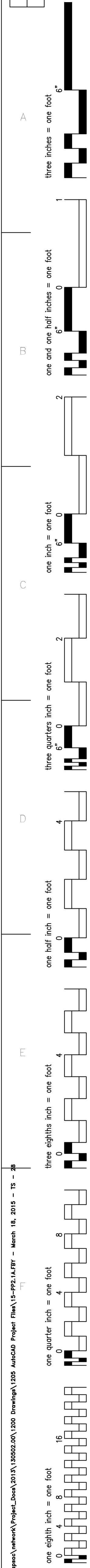


**MEI**  
ARCHITECTS  
239 9TH STREET SAN FRANCISCO, CA 94103  
T 415.703.0328 F 415.707.6328 [www.meiarchitects.com](http://www.meiarchitects.com)

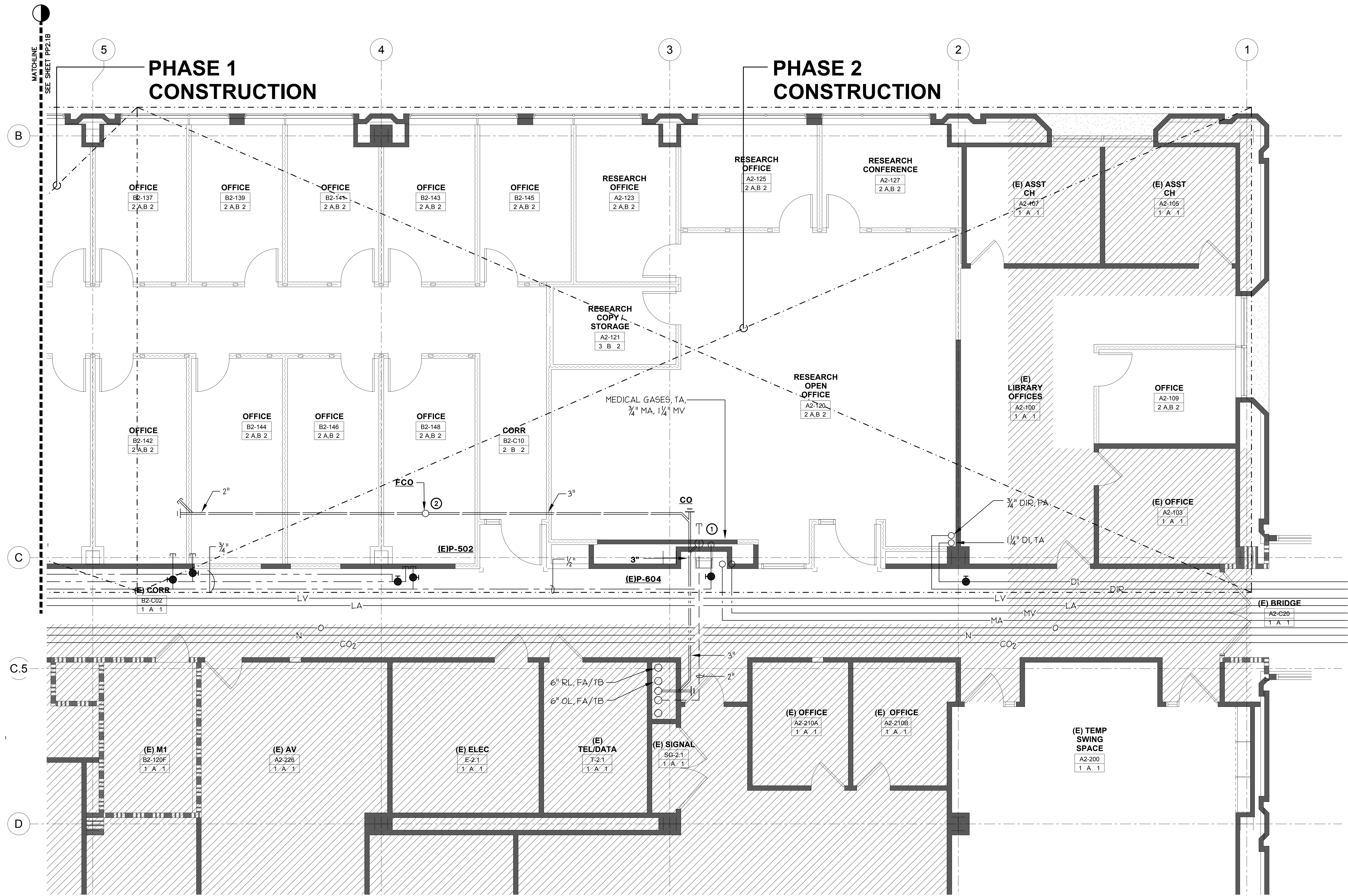
PD2-1

 Department of  
Veterans Affairs

\\copaco\network\Project\_Doc\2013\145052.DW\200 Drawings\ 1205 AutoCAD Project Files\15-092 IA.FBY - March 18, 2015 - TS - 38



- ① EXISTING WATER FOUNTAIN TO REMAIN
- ② EXISTING FCO TO REMAIN.


$$1/4'' = 1'-0''$$

<b>Revisions:</b>	<b>Date</b>

**CAPITAL ENGINEERING  
CONSULTANTS, INC.**  
RANCHO CORDOVA, CALIFORNIA

CM - IB/TS	130502.00
PM - DESIGN TEAM	PROJECT NO.



**MEI**  
ARCHITECTS  
239 9TH STREET SAN FRANCISCO, CA. 94103  
T 415.703.0328 F 415.707.6328 [www.meiarchitects.com](http://www.meiarchitects.com)

Approved: Project Director

Checked

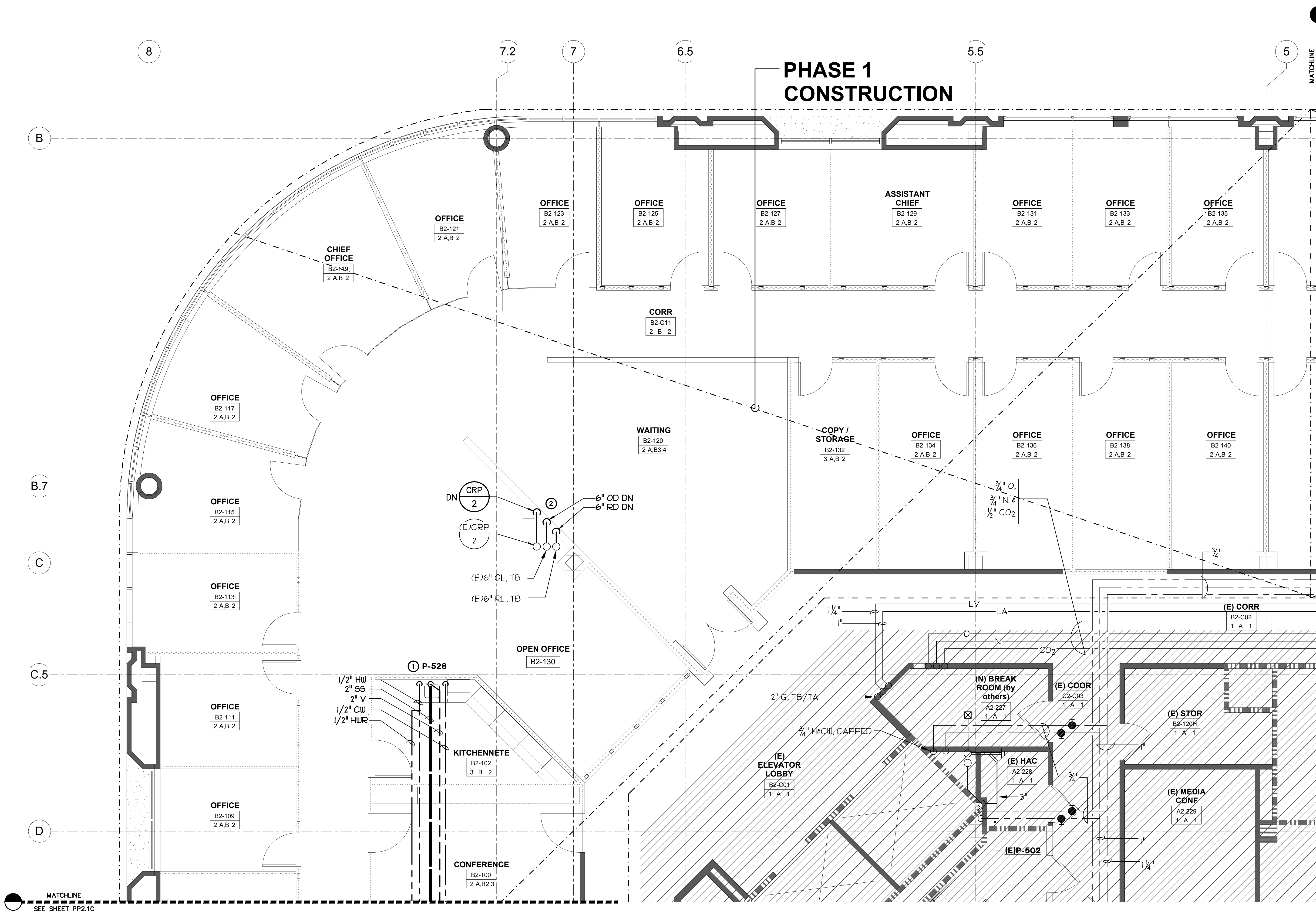
Drawing Number  
**PP2-1A**  
Dwg.-- of --

 Department of  
Veterans Affairs



p:\pso\Network\Project\_Book\2015\150502\_001\_1502 Drawings\1505 AutoCAD Project (Title) 15-0502.1B.DWG - March 18, 2016 - TS - 26

- ① NEW 1/2" H & CW DOWN, 2" WASTE DN, 2" VENT UP.
- ② RELOCATE RD & OD TO NEW WALL LOCATION. RECONNECT AT FIRST FLOOR CEILING.



1/4" = 1'-0"

<b>Revisions:</b>	<b>Date</b>



**CAPITAL ENGINEERING  
CONSULTANTS, INC.**  
RANCHO CORDOVA, CALIFORNIA

CM - IB/TS  
PM - DESIGN TEAM

130502.00  
PROJECT NO.



DATE SIGNED: \_\_\_\_\_

**MEL**  
ARCHITECTS  
239 9TH STREET SAN FRANCISCO, CA 94103  
415.773.0122 • 415.773.6232 • [melarchitects.com](http://melarchitects.com)

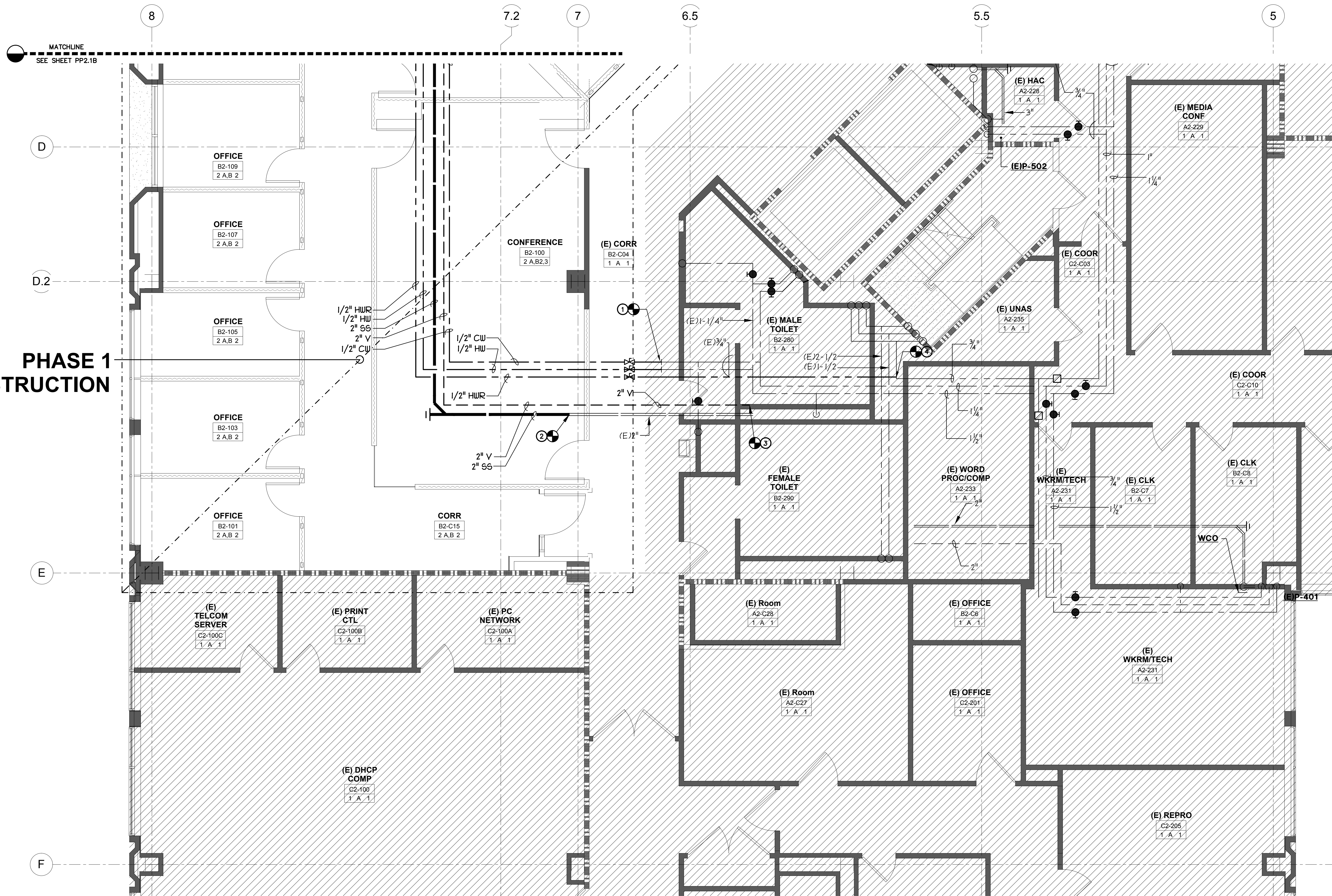
Approved: Project Director

Date  
MARCH 6, 2015

PP2-1B  
Drawn of Department of  
Veterans Affairs

BID DOCUMENTS

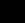
	E	D	C	B	A
<pre> networks/Project_Docx(2013\100502\00\1200_BringingA\1005_AutoCdo_Proper_FitA\16-PP2.CJ.RP - Mersc 18, 2015 - TS - pp </pre>					



- ① CONNECT NEW 1/2" H & CW TO EXISTING 1/2" H & CW. PROVIDE NEW SHUT-OFF VALVES.
- ② CONNECT NEW 2" WASTE TO EXISTING 2" WASTE BELOW FLOOR.
- ③ CONNECT NEW 2" VENT TO EXISTING 3" VENT AT WALL.
- ④ CONNECT NEW 1/2" HWR TO EXISTING 1/2" HWR. PROVIDE NEW SHUT-OFF VALVES.

1/4" = 1'-0"

<b>Revisions:</b>	<b>Date</b>



CM - IB/TS	130502.00
PM - DESIGN TEAM	PROJECT NO.



DATE SIGNED: \_\_\_\_\_

**INMEL**  
ARCHITECT  
2339 9TH STREET SAN FRANCISCO, CA 94113  
T 415.703.0228 F 415.702.6528 [www.inmelarchitect.com](http://www.inmelarchitect.com)

Approved: Project Director

Date  
MARCH 6, 2015

PP2-1C

 Department of  
Veterans Affairs