

DEMOLITION PLAN GENERAL NOTES

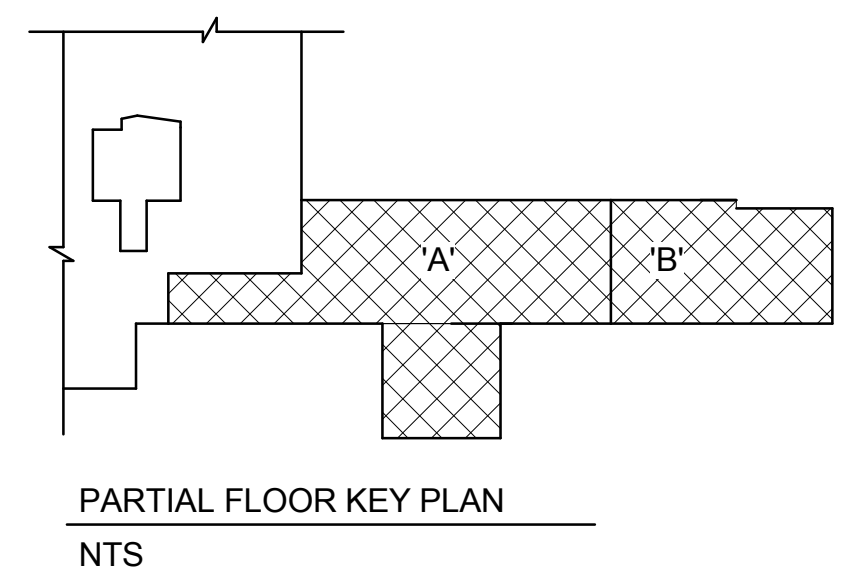
- VERIFY ALL EXISTING CONDITIONS PRIOR TO BEGINNING WORK. NOTIFY THE ARCHITECT OF CONFLICTS PRIOR TO PROCEEDING.
- ALL FURNITURE, FURNISHINGS AND EQUIPMENT WILL BE REMOVED, RELOCATED AND/OR STORED BY VA PERSONNEL UNLESS NOTED OTHERWISE.
- ALL ITEMS BEING REMOVED SHALL REMAIN THE PROPERTY OF THE OWNER UNTIL CONFIRMATION HAS BEEN MADE AS TO WHETHER THE OWNER WILL RETAIN SUCH ITEMS. ALL ITEMS NOT BEING RETAINED BY THE OWNER OR DESIGNATED ON THE DRAWINGS TO BE RELOCATED OR REINSTALLED SHALL BE COMPLETELY REMOVED FROM THE SITE.
- THE DEMOLITION CONTRACTOR SHALL PROVIDE AND INSTALL TEMPORARY DUST PARTITIONS, TEMPORARY DOORS, WALK-OFF MATS AND EQUIPMENT PROTECTION WHERE SHOWN ON THE DOCUMENTS OR IMPLIED BY THE WORK BEING PERFORMED. TEMPORARY DUST PARTITION SHALL BE 1 HOUR FIRE RATED CONSTRUCTION UP TO UNDERSIDE OF FLOOR ABOVE AND SEALED. DUST PARTITION DOOR TO BE 3/4 HOUR RATED DOOR, SELF CLOSING, POSITIVE LATCHING, LOCKABLE TO ACCEPT BEST T-PIN CORE. SUCH PROTECTION SHALL BE MAINTAINED AND REPAIRED PROMPTLY IF DAMAGED TO AVOID DUST INFILTRATION INTO ADJACENT AREAS. PROVIDE HEPA FILTER FILTRATION AND NEGATIVE AIR MACHINES WITH MONITORING GAGES. PARTITIONS SHALL BE FIRE-RATED WHERE DESIGNATED ON DRAWINGS.
- COVER ALL RETURN AIR GRILLES AND EXHAUST GRILLES IN CONSTRUCTION AREA WITH FILTER MEDIA AND CHANGE REGULARLY.
- REFER TO MECHANICAL, ELECTRICAL, AND PLUMBING DOCUMENTS FOR RESPECTIVE DEMOLITION INFORMATION.
- REPAIR AND LEVEL FLOOR SLAB, WALLS AND/OR CEILING SUITABLE FOR NEW FINISHES WHERE DEMOLITION CAUSES OR EXPOSES DAMAGE TO THESE SURFACES.
- FILL ALL FLOOR OPENINGS WHERE PIPING, CONDUITS, ETC. HAVE BEEN REMOVED TO MAINTAIN TWO-HOUR FIRE RATING.
- REMOVE ALL BED LIGHTS, NURSE CALL PANELS, PATIENT LIFTS, SHARPS CONTAINERS, PAPER TOWEL DISPENSERS, WARDROBE UNITS, TELEVISIONS, MIRRORS AND OTHER MISCELLANEOUS EQUIPMENT/ACCESSORIES ON WALLS/CEILING IN AREA OF RENOVATION UNLESS NOTED OTHERWISE. VERIFY ITEMS TO BE RELOCATED.
- REPAIR/REPLACE COLUMN FIRE PROOFING IF DAMAGED DURING DEMOLITION PROCESS.
- REMOVE ALL WALL MOUNTED HANDRAILS AND CRASH BARS WITHIN CONSTRUCTION AREA.
- ALL WALL DEMOLITION WILL BE PERFORMED AFTER NORMAL WORKING HOURS. COORDINATE WITH VA COR.
- ALL ASBESTOS CONTAINING MATERIAL IN THE AREA OF CONSTRUCTION SHALL BE REMOVED IN ACCORDANCE WITH SECTION 02 82 11 ASBESTOS ABATEMENT. ALL THERMAL SYSTEMS INSULATION (TSI) AND ASBESTOS DEBRIS LOCATED ABOVE THE CEILING IN THE CONSTRUCTION AREA SHALL BE REMOVED BY THE ABATEMENT CONTRACTOR. THE CONTRACTOR SHALL TAKE APPROPRIATE PRECAUTIONS DURING THE REMOVAL OF THE EXISTING CEILING DUE TO THE POTENTIAL TSI AND ASBESTOS DEBRIS ABOVE THE CEILING.
- AFTER REMOVAL OF EXISTING CHASES, VERIFY FLOOR PENETRATION CONDITION. FIRE STOP ALL PENETRATIONS THROUGH FLOOR TO COMPLY WITH A TWO-HOUR FIRE RATING OR IF NECESSARY, INSTALL A TWO-HOUR FIRE RATED CHASE.
- REMOVE ALL WALL COVERING, OTHER WALL TREATMENT, AND ATTACHMENTS. PATCH AND SKIM COAT AND PREPARE FOR FINAL FINISH.
- DEMOLITION CHUTE TO DUMPSTER SHALL BE FULLY ENCLOSED (SEE PHASING PLAN GI 003 FOR DUMPSTER LOCATION).
- REMOVE AND REINSTALL SIGNS AT EXISTING STAIR DOORS AND MEDICAL GAS VALVE CABINETS (UPDATE MEDICAL GAS SIGNS TO REFLECT CHANGES).

DEMOLITION PLAN KEY NOTES (1)

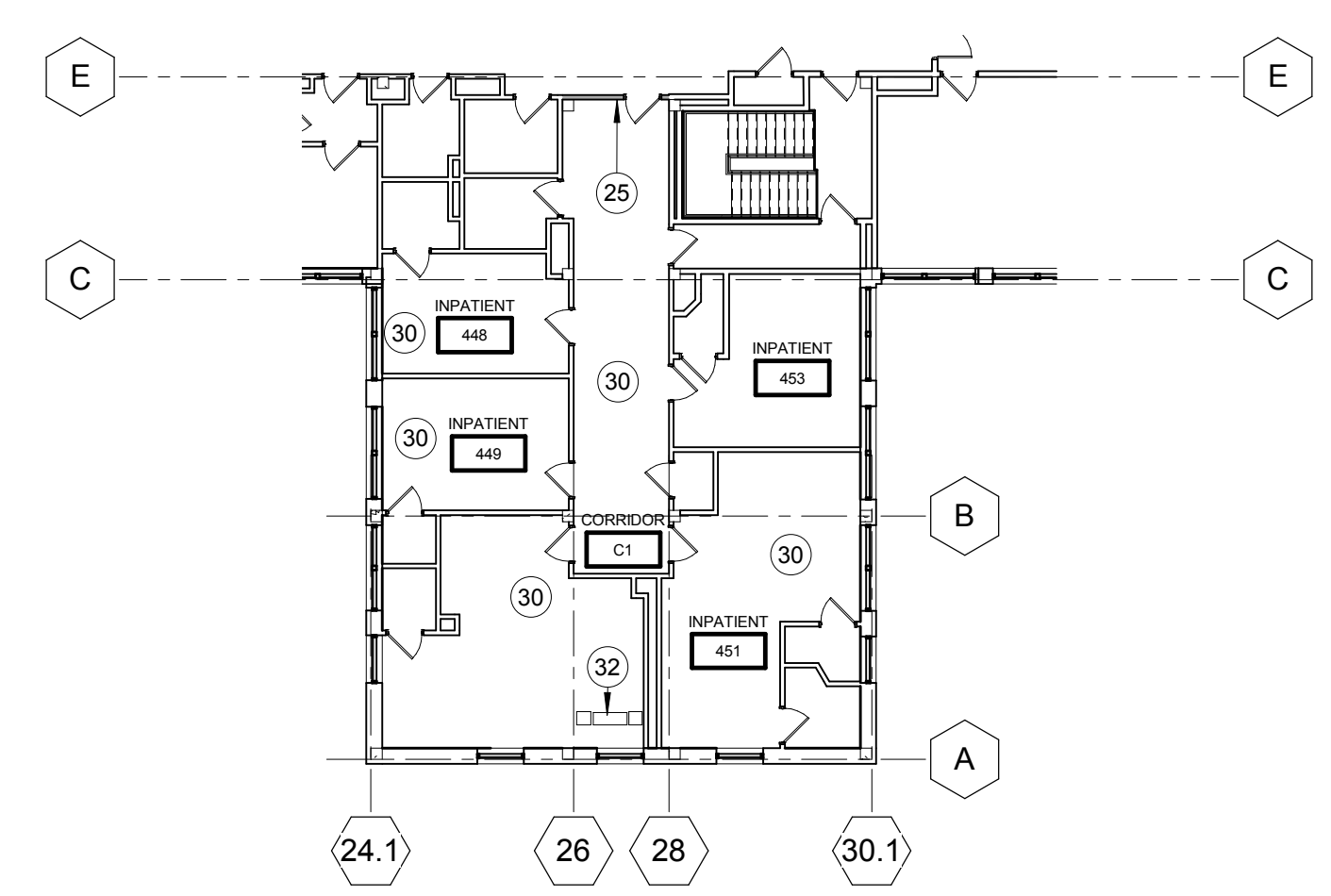
- REMOVE WALL COMPLETE. PATCH AND REPAIR CONCRETE SLAB WITH TOPPING MATERIAL FLUSH WITH ADJACENT FLOOR SLAB. ALSO PATCH AND REPAIR AT EXISTING WALL(S) (WHERE APPLICABLE) TO MATCH SURROUNDING FINISH AND MATERIALS; CUT OUT EXTERIOR MASONRY WALL AND TOOTH IN NEW MASONRY AS REQUIRED IF WALLS ARE TOOTHED TOGETHER.
- REMOVE DOOR, FRAME & HARDWARE. ALL CYLINDRICAL LEVER STYLE AND MORTISE TYPE LATCHSETS, LOCKSETS, AND STRIKES SHALL BE TURNED OVER TO THE OWNER.
- REMOVE FLOOR FINISHES AND BASE TO CONCRETE. PREPARE FOR NEW FINISH. ALL ACM FLOORING AND MASTIC SHALL BE REMOVED IN ACCORDANCE WITH THE ASBESTOS ABATEMENT SPECIFICATIONS.
- REMOVE SUSPENDED ACOUSTICAL CEILING GRID AND BOARD.
- REMOVE GYP. BULKHEAD.
- PLUMBING FIXTURE TO BE REMOVED. REF. PLUMBING DEMOLITION DRAWINGS.
- PTAC UNITS TO BE REMOVED BY M.C.; REF. MECHANICAL DEMOLITION DRAWINGS. REF. DETAIL ON SHEET A501 FOR INFILL.
- REMOVE PLASTER CEILING/BULKHEAD.
- REMOVE CERAMIC TILE ON FLOOR. REPAIR CONCRETE SLAB WITH TOPPING MATERIAL FLUSH WITH ADJACENT FLOOR SLAB.
- DOOR TO REMAIN; SAND & REPAINT.
- REMOVE CASEWORK AND COUNTER TOP COMPLETE.
- REMOVE WALL HUNG CASEWORK COMPLETE.
- REMOVE TOILET PARTITION COMPLETE.
- RADIATOR UNITS TO BE REMOVED BY M.C.; REF. MECHANICAL DEMOLITION DRAWINGS.
- REMOVE CERAMIC TILE FROM WALLS. PATCH AND REPAIR TO RECEIVE NEW FINISHES.
- REMOVE ROOM EQUIPMENT - UNDERCOUNTER REFRIGERATOR/FREEZER AND MICROWAVE OVEN. TURN OVER TO VA.
- REMOVE MARKERBOARD. TURN OVER TO VA.
- REMOVE HANDRAIL. TURN OVER TO VA. PATCH AND REPAIR ANY EXISTING WALLS TO REMAIN TO MATCH SURROUNDING FINISH.
- REMOVE BATHROOM ACCESSORIES AND VERIFY ALL ITEMS TO BE RELOCATED OR TURNED OVER TO OWNER, INCLUDING, MIRROR, SOAP DISPENSER, SHOWER ROD AND CURTAIN, PAPER TOWEL DISPENSER, SHOWER SEAT, TOILET SEAT COVER DISPENSER, TOILET PAPER DISPENSER, GRAB BARS, SHARPS ITEM DISPENSER, AND SANITARY WIPER DISPENSER.
- REMOVE TACKBOARD COMPLETE FROM WALL AND TURN OVER TO VA.
- REMOVE CUBICAL CURTAIN TRACK COMPLETE.
- REMOVE RAISED CONCRETE SLAB COMPLETE AND REPAIR CONCRETE SLAB WITH TOPPING MATERIAL FLUSH WITH ADJACENT FLOOR SLAB.
- REMOVE RECESSED WALL CABINET.
- REMOVE BLINDS COMPLETE AND PATCH WALL TO A SMOOTH FINISH TO MATCH SURROUNDING SURFACE.
- TEMPORARY DUST PARTITION AND DOOR. COORDINATE FINAL LOCATION WITH C.O.R. & EXISTING ABOVE CEILING PIPING AND DUCTWORK.
- REMOVE TERRAZZO BASE COMPLETE.
- REMOVE WALL IF NOT 2 HOUR RATED TO DECK; IF PARTITION IS 2 HOUR RATED, LEAVE IN PLACE.
- TEMPORARY DUST PARTITION AND DOOR TO BE INSTALLED AT THE BEGINNING OF PHASE 2.
- NEW PARTITION FORMING NORTH SIDE OF CORRIDOR TO BE COMPLETED IN PHASE 1 AND SHALL ACT AS THE DUST PARTITION IN PHASE 2. DOOR 3 INTO PRE-OP/PHASE II RECOVERY TO BE INSTALLED AT END OF PHASE 2. TEMPORARY PARTITIONS SHALL BE INSTALLED FOR THIS WORK.
- REMOVE CEILING BOARD AND GRID AS REQUIRED FOR ABOVE CEILING WORK IN THIS AREA. REINSTALL BOARD, REPLACE DAMAGE OR STAINED BOARD AND GRID TO MATCH EXISTING.
- REMOVE PORTION OF GYPSUM BOARD CEILING FOR ABOVE CEILING WORK IN THIS AREA. INSTALL NEW GYPSUM BOARD AND ACCESS DOOR. COORDINATE WITH M.C.
- SAW CUT FLOOR FOR NEW DUCTWORK & DAMPERS. SEE DETAIL ON SHEET A5102 FOR REINFORCING. COORDINATE WITH M.C. FOR OPENING SIZE AND LOCATIONS.
- REMOVE EXISTING ALUMINUM WINDOW SYSTEM AND PREP OPENING FOR INSTALLATION OF NEW WINDOW AND INSULATED PANEL.

NOISE (INCLUDES WORK ON THE 2ND, 3RD AND 4TH FLOORS)

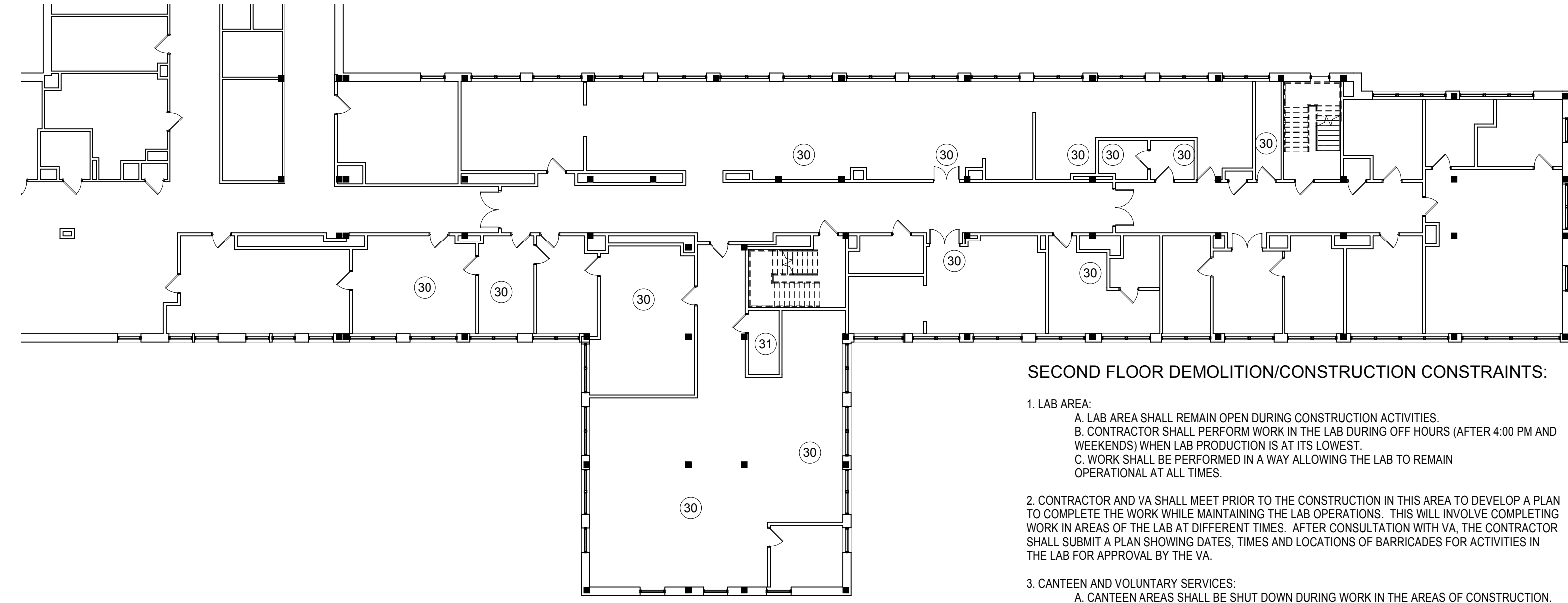
- A. Contractor shall make provisions to ensure construction noise does not exceed the OSHA threshold in areas adjacent to construction.
- B. Contractor shall conduct high noise activities in a way to allow the facility to operate during construction. Actions that the contractor shall take to minimize impact include:
- 1) Notifying the COR two days prior to time of high noise activities to allow the COR to communicate this to the employees and patients.
 - 2) Scheduling high noise activities during times of minimal impact.
 - 3) No high noise producing activities shall occur between the hours of 9:00 pm and 7:00 am.
- C. Complaints by patients or employees shall be directed to the facility Safety Office. The Safety Office shall investigate the complaints and make recommendations to the Contracting Officer on how to proceed with the work.



100% CONSTRUCTION DOCUMENTS
FULLY SPRINKLERED

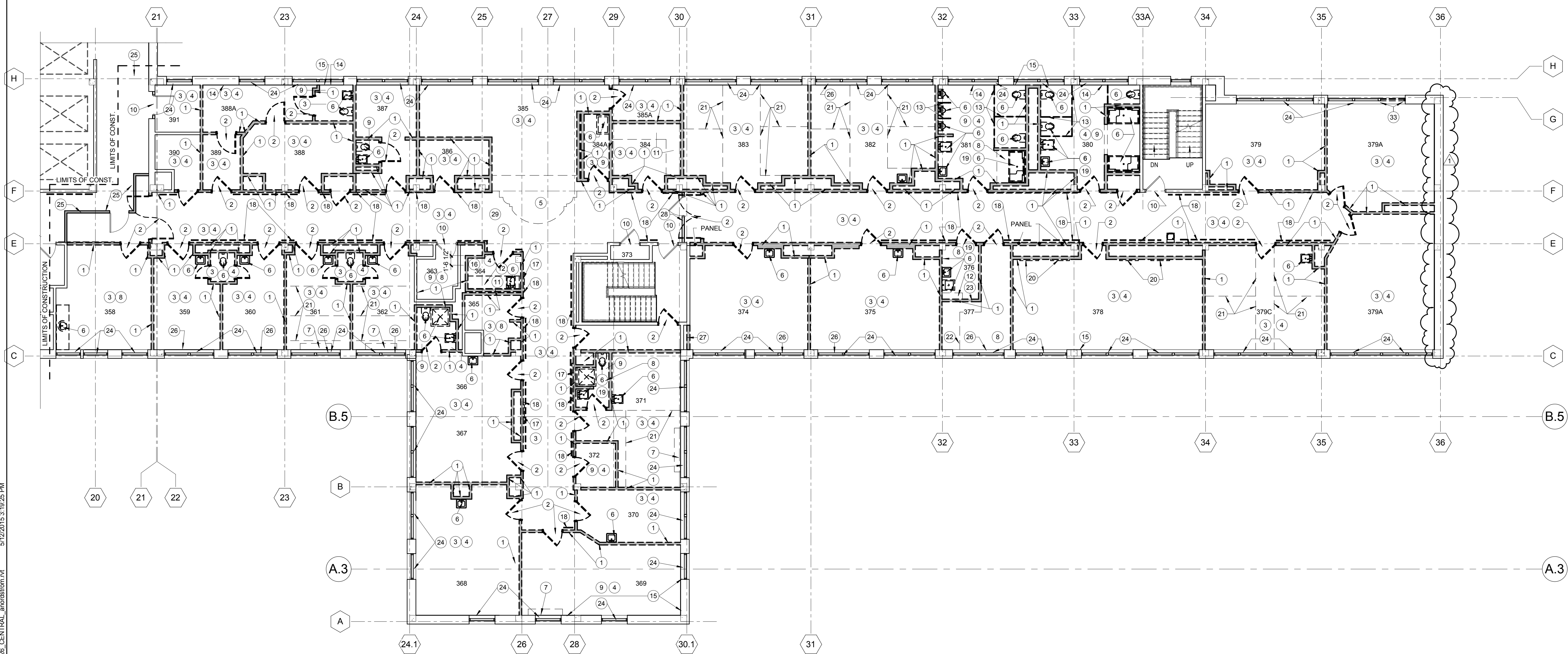


2 FOURTH FLOOR DEMOLITION PLAN
AD101 1/16" = 1'-0"



3 SECOND FLOOR DEMOLITION PLAN
AD101 1/16" = 1'-0"

- SECOND FLOOR DEMOLITION/CONSTRUCTION CONSTRAINTS:**
- LAB AREA:
A. LAB AREA SHALL REMAIN OPEN DURING CONSTRUCTION ACTIVITIES.
B. CONTRACTOR SHALL PERFORM WORK IN THE LAB DURING OFF HOURS (AFTER 4:00 PM AND WEEKENDS) WHEN LAB PRODUCTION IS AT ITS LOWEST.
C. WORK SHALL BE PERFORMED IN A WAY ALLOWING THE LAB TO REMAIN OPERATIONAL AT ALL TIMES.
 - CONTRACTOR AND VA SHALL MEET PRIOR TO THE CONSTRUCTION IN THIS AREA TO DEVELOP A PLAN TO COMPLETE THE WORK WHILE MAINTAINING THE LAB OPERATIONS. THIS WILL INVOLVE COMPLETING WORK IN AREAS OF THE LAB AT DIFFERENT TIMES. AFTER CONSULTATION WITH VA, THE CONTRACTOR SHALL SUBMIT A PLAN SHOWING DATES, TIMES AND LOCATIONS OF BARRICADES FOR ACTIVITIES IN THE LAB FOR APPROVAL BY THE VA.
 - CANTEEN AND VOLUNTARY SERVICES:
A. CANTEEN AREAS SHALL BE SHUT DOWN DURING WORK IN THE AREAS OF CONSTRUCTION.
B. CONTRACTOR SHALL SUBMIT A PLAN SHOWING DATES, TIMES AND LOCATIONS OF BARRICADES FOR ACTIVITIES IN THE CANTEEN AND VOLUNTARY SERVICE AREA FOR APPROVAL BY THE VA. THE PLAN SHALL MINIMIZE TIME OF CANTEEN CLOSURE.



1 THIRD FLOOR DEMOLITION PLAN
AD101 1/8" = 1'-0"

REVISIONS

Revision #	Description	Date
1	Amendment #1	5/12/2015

SUBMISSIONS

Document Type	Date
100% CONSTRUCTION DOCUMENTS	10-30-2014
95% CONSTRUCTION DOCUMENTS	8-8-2014
65% CONSTRUCTION DOCUMENTS	3-11-2014
35% CONSTRUCTION DOCUMENTS	11-7-2013

VA
VA NORTHERN INDIANA HEALTH CARE SYSTEM, FORT WAYNE
2121 LAKE AVE., FORT WAYNE, IN 46805

ARCHITECT/ENGINEERS:

AMERICAN STRUCTUREPOINT INC.
7260 SHADELAND STATION
INDIANAPOLIS, IN 46256-3957
TEL 317.547.5580 FAX 317.543.0270
www.structurepoint.com

APOGEE Consulting Group
1060 North Capitol Avenue
Suite E-375
Indianapolis, IN 46204
317-559-3878

CONSULTANTS:

USFin Development, LLC
1105 West Weir Street
Litchfield, Illinois 62556



Drawing Title
ARCH. DEMOLITION PLANS

Approved: Project Director

Project Title
RENOVATE THIRD FLOOR EAST WING

Project Number
#610A4-13-104

Building Number
01

Drawing Number
AD101

Location
2121 LAKE AVE., FORT WAYNE, IN 46805

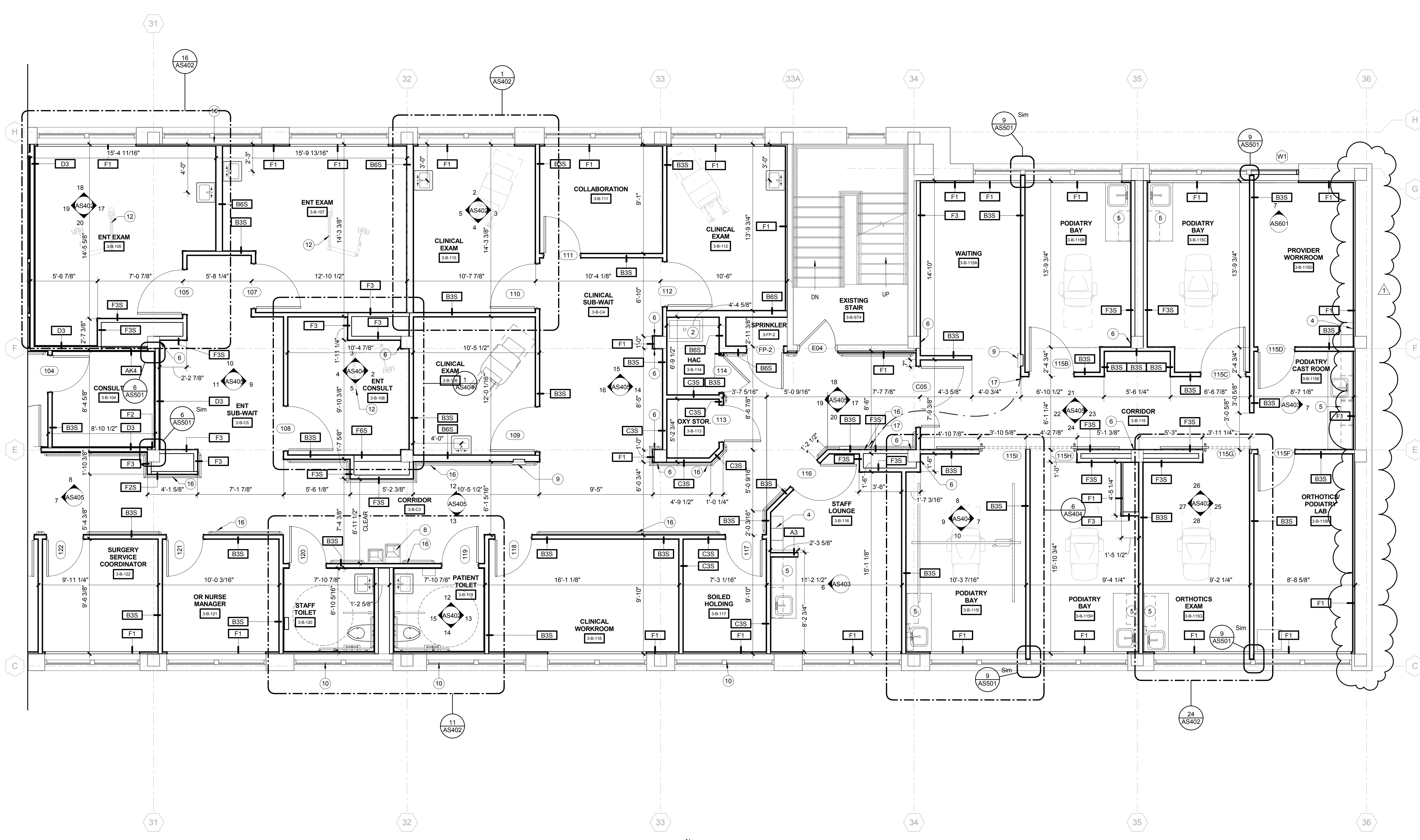
Date
10/30/2014

Checked
JDF/FMF

Drawn
APN

Office of Construction and Facilities Management

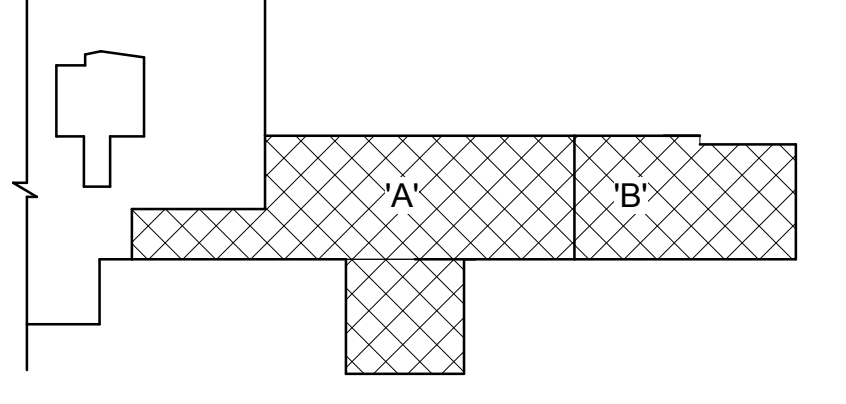
VA Department of Veterans Affairs



1 THIRD FLOOR ARCHITECTURAL PLAN
1/4" = 1'-0"

FLOOR PLAN KEY NOTES (1)

- 1 BUILDING EXPANSION JOINT - REPLACE IF ADJACENT WALL DEMOLITION EXPOSES FLOOR JOINT. MAINTAIN 2 HOUR FLOOR FIRE RATING.
- 2 MOP-SINK - REF. PLUMBING DRAWINGS
- 3 FUSH PAD DOOR OPERATOR - REFER TO ELECTRICAL DRAWINGS FOR FURTHER REQUIREMENTS
- 4 LOCKER - REFER TO EQUIPMENT DRAWINGS
- 5 CASEWORK & COUNTERTOP
- 6 ADHERE GYPSUM WALLBOARD TO EXISTING CONSTRUCTION
- 8 DRINKING FOUNTAINS - REF PLUMBING DWGS
- 9 FIRE EXTINGUISHER CABINET-REF LIFE-SAFETY SHEET FOR DETAILS
- 10 APPLY OPAQUE WINDOW FILM TO BACK OF WINDOW
- 11 IT EQUIPMENT CAGE
- 12 G.C. SHALL PROVIDE STRUCTURAL FRAMEWORK AND BRACING FOR INSTALLATION OF STRUCTURAL PLATE PROVIDED BY MANUFACTURER OF CEILING MOUNTED EQUIPMENT. ENGINEERED DESIGN OF SUPPORT SHALL INCLUDE ALL CONNECTIONS, HARDWARE, PLATES BRACKETS AND OTHER MATERIALS REQUIRED FOR INSTALLATION OF EQUIPMENT MOUNT INCLUDING CALCULATIONS STAMPED BY CONTRACTOR'S STRUCTURAL ENGINEER.
- 13 30"x36" ACCESS PANELS. COORDINATE LOCATION WITH M.G.
- 14 TEMPORARY DUST PARTITION. REF DEMOLITION DWGS
- 15 REMOVE EXISTING ACCESS PANEL AND INSTALL NEW FIRE RATED ACCESS PANEL AT FACE OF NEW GYPSUM BOARD
- 16 CRASH BAR - SEE ELEVATIONS FOR HEIGHT
- 17 LOCATION OF AUTOMATIC DOOR OPENER CONTROL. REF ELECTRICAL DWGS
- 18 INSTALL WALL EXPANSION JOINT
- 19 INFILL DUCT OPENING IN FLOOR WITH CONCRETE. SEE DETAIL 10/AS501.



PARTIAL FLOOR KEY PLAN
NTS

100% CONSTRUCTION DOCUMENTS
FULLY SPRINKLERED

Revision #	Description	Date
1	Amendment #1	5/12/2015

Submissions	Date
100% CONSTRUCTION DOCUMENTS	10-30-2014
95% CONSTRUCTION DOCUMENTS	8-8-2014
65% CONSTRUCTION DOCUMENTS	3-11-2014
35% CONSTRUCTION DOCUMENTS	11-7-2013

VA NORTHERN INDIANA HEALTH CARE SYSTEM, FORT WAYNE
2121 LAKE AVE., FORT WAYNE, IN 46805

ARCHITECT/ENGINEERS:
AMERICAN STRUCTUREPOINT INC.
7260 SHADELAND STATION INDIANAPOLIS, IN 46204
TEL 317.547.5580 FAX 317.543.0270 www.structurepoint.com

CONSULTANTS:
APOGEE Consulting Group
1060 North Capitol Avenue Suite E-375 Indianapolis, IN 46204 317-559-3876

USFin Development, LLC
1105 West Weir Street Litchfield, Illinois 62556



Drawing Title
THIRD FLOOR PLAN 'B'
Approved: Project Director

Project Title
RENOVATE THIRD FLOOR EAST WING
Location
2121 LAKE AVE., FORT WAYNE, IN 46805
Date
10/30/2014
Checked
JDF/FMF
Drawn
APN

Project Number
#610A4-13-104
Building Number
01
Drawing Number
AS101.B

Office of Construction and Facilities Management
VA Department of Veterans Affairs

one eighth inch = one foot
 one quarter inch = one foot
 one half inch = one foot
 three eighths inch = one foot
 three quarters inch = one foot
 one inch = one foot
 three inches = one foot

C:\Users\anderson\Documents\2010_00029_10_VA_FortWayne_3rd_Floor_2014_09_26_CENTRAL_amoridstom.rvt
 5/12/2015 3:19:39 PM
 VA FORM 08-6231

