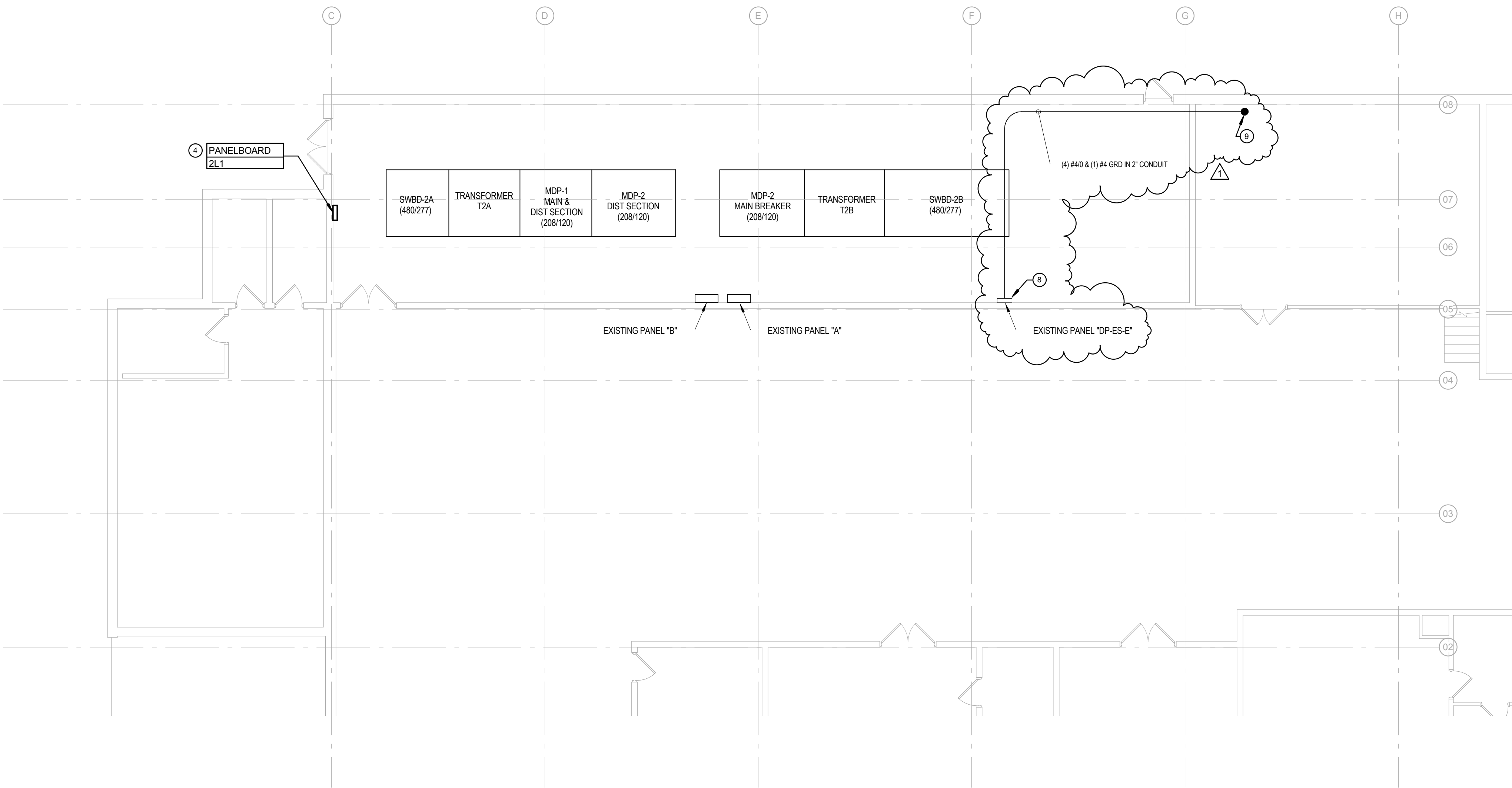
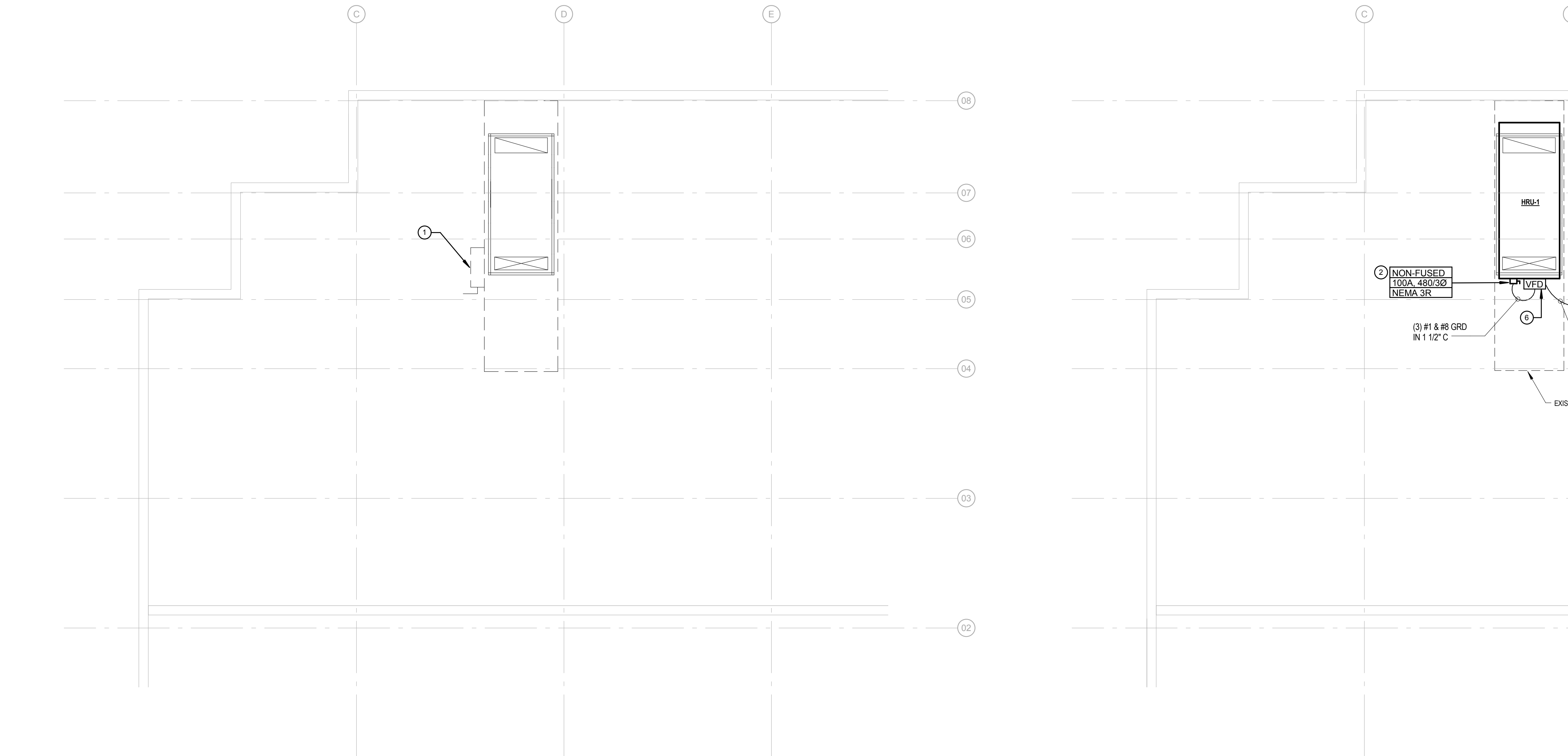


three inches = one foot
one and one half inch = one foot
one inch = one foot
three quarters inch = one foot
one half inch = one foot
three eighths inch = one foot
one eighth inch = one foot
one quarter inch = one foot
one eighth inch = one foot



1 SECOND FLOOR MAIN ELECTRIC ROOM
1/8" = 1'-0"



2 PARTIAL SECOND FLOOR ROOF ELECTRICAL DEMOLITION PLAN
1/8" = 1'-0"



3 PARTIAL SECOND FLOOR ROOF POWER PLAN
1/8" = 1'-0"

Branch Panel: 2L1
Location: ENG. EE-200
Supply From: MDP-1
Mounting: Surface
Enclosure: Type 1

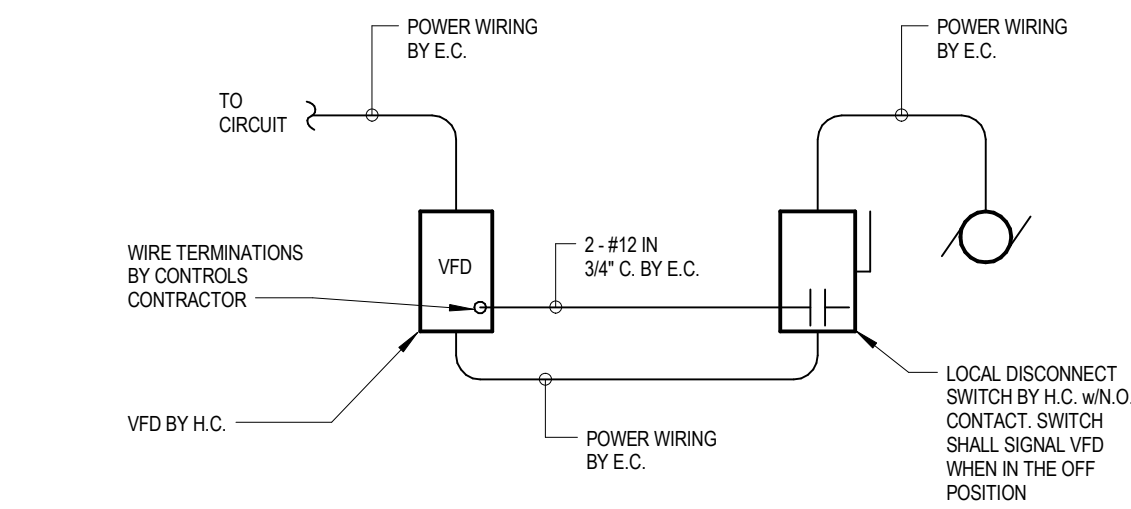
Volts: 120/208 Wye
Phases: 3
Wires: 4

A.I.C. Rating: 65KAIC
Mains Type: MCB
Mains Rating: 200 A
MCB Rating: 225 A

Notes:

CKT	Circuit Description	Trip	Poles	A	B	C	Poles	Trip	Circuit Description	CKT
1	EF-3E10	20 A	1	500 VA 180 VA			1	20 A	ROOF REC EF-3E10	2
3	Spare	20 A	1		0 VA 0 VA	0 VA 0 VA	1	20 A	Spare	4
5	Spare	20 A	1		0 VA 0 VA	0 VA 0 VA	1	20 A	Spare	6
7	Spare	20 A	1		0 VA 0 VA	0 VA 0 VA	1	20 A	Spare	8
9	Spare	20 A	1		0 VA 0 VA	0 VA 0 VA	1	20 A	Spare	10
11	Spare	20 A	1		0 VA 0 VA	0 VA 0 VA	1	20 A	Spare	12
13	Spare	20 A	1	0 VA 0 VA			1	20 A	Spare	14
15	Spare	20 A	1		0 VA 0 VA	0 VA 0 VA	1	20 A	Spare	16
17	Spare	20 A	1			0 VA 0 VA	1	20 A	Spare	18
19	Spare	20 A	1	0 VA 0 VA			1	20 A	Spare	20
21	Spare	20 A	1		0 VA 0 VA	0 VA 0 VA	1	20 A	Spare	22
23	Spare	20 A	1			0 VA 0 VA	1	20 A	Spare	24
25	Spare	20 A	1	0 VA 0 VA			1	20 A	Spare	26
27	Spare	20 A	1		0 VA 0 VA	0 VA 0 VA	1	20 A	Spare	28
29	Spare	20 A	1			0 VA 0 VA	1	20 A	Spare	30
31	Spare	20 A	1	0 VA 0 VA			1	20 A	Spare	32
33	Spare	20 A	1		0 VA 0 VA	0 VA 0 VA	1	20 A	Spare	34
35	Spare	20 A	1			0 VA 0 VA	1	20 A	Spare	36
37	Space	--	--	0 VA 0 VA			--	--	Space	38
39	Space	--	--		0 VA 0 VA	0 VA 0 VA	--	--	Space	40
41	Space	--	--			0 VA 0 VA	--	--	Space	42
		Total Load:		680 VA	0 VA	0 VA				
		Total Amps:		6 A	0 A	0 A				

Legend:



4 TYPICAL VFD CONNECTION DETAIL
1/8" = 1'-0"

- ELECTRICAL DEMOLITION GENERAL NOTES (THIS DRAWING)**
- EQUIPMENT SHOWN TO BE REMOVED IS DIAGRAMMATIC AND DOES NOT REPRESENT THE FULL SCOPE OF DEMOLITION WORK. REMOVE DEVICES SHOWN BACK TO SOURCE UNLESS NOTED OTHERWISE.
 - CONTRACTOR SHALL PROVIDE A MINIMUM TWO WEEKS WRITTEN NOTICE PRIOR TO ANY SHUT DOWN. NOTICE IS TO INCLUDE BUT IS NOT LIMITED TO THE LOCATION, PANELS, AND DURATION OF SHUT DOWN.
 - COR SHALL HAVE RIGHT OF FIRST REFUSAL TO ANY EQUIPMENT, DEVICES, LUMINAIRES, ETC. DEMOLISHED FROM RENOVATION AREA PRIOR TO DISPOSAL.
 - PROTECT THE EXISTING EQUIPMENT THAT IS TO REMAIN IN PLACE FROM DIRT, DUST, OR DAMAGE DURING THE COURSE OF DEMOLITION.

- ELECTRICAL GENERAL NOTES (THIS DRAWING)**
- FINAL LOCATION OF ALL EQUIPMENT SHALL BE DETERMINED IN THE FIELD AND SHALL BE INSTALLED AS DIRECTED BY THE ARCHITECT OR OWNER'S REPRESENTATIVE. WHERE STRUCTURAL OPENINGS ARE NOT AVAILABLE, THE CONTRACTOR SHALL CORE DRILL WALLS AND FLOORS AS REQUIRED TO PERMIT PASSAGE OF CONDUITS. THE E.C. SHALL PROVIDE A MARKED-UP PLAN WITH LOCATIONS PENETRATIONS FOR REVIEW AND APPROVAL OF THE STRUCTURAL ENGINEER BEFORE ROUGH-IN BEGINS.
 - RECEPTACLES FOR ALL EQUIPMENT SHALL BE COMPLETE WITH PLUGS FOR THIS EQUIPMENT. THE E.C. SHALL VERIFY NEMA CONFIGURATIONS OF PLUGS AND RECEPTACLES FOR EQUIPMENT IN THE SPACE.
 - DURING THE BIDDING PROCESS, THE ELECTRICAL CONTRACTOR SHALL REVIEW DRAWINGS AND SPECIFICATIONS OF ALL OTHER TRADES (ARCHITECTURAL, SITE/ LANDSCAPING, HVAC, PLUMBING, AND SPECIALTY TRADES). ALL ITEMS REQUIRING POWER INDICATED ON THESE DRAWINGS BUT NOT INDICATED ON THE ELECTRICAL DRAWINGS SHALL BE CONSIDERED A PART OF THE ELECTRICAL CONTRACTOR'S WORK. THIS WORK SHALL BE INSTALLED AS PER NEC REQUIREMENTS AT NO ADDITIONAL COST TO THE OWNER.
 - THE CONTRACTOR SHALL MAKE EVERY EFFORT TO MAKE ALL FEEDER RUNS CONTINUOUS (NO CABLE BREAKS). IF SPLICING OF CABLES IN BOXES BECOMES NECESSARY, USE O.G. TYPE "XW" CABLE TAPS, OR APPROVED EQUAL, AND TAP EACH TAP IN APPROVED MANNER.
 - THE E.C. SHALL COORDINATE HIS CONDUIT PENETRATIONS FOR ROOFTOP EQUIPMENT WITH M.C. AND ROOFING CONTRACTOR. IF PROVISIONS ARE NOT IN PLACE FOR THESE PENETRATIONS THE E.C. SHALL BE RESPONSIBLE FOR MAKING HIS OWN PENETRATIONS AND CONTRACTING THE ROOF CONTRACTOR FOR SEALING THE ROOF PENETRATIONS.

- KEYNOTES (THIS DRAWING)**
- DISCONNECT POWER FEED TO EXISTING HRL-1 SCHEDULED TO BE DEMOLISHED. REMOVE CONDUIT, WIRING, DISCONNECTS, ETC BACK TO SOURCE.
 - DISCONNECT SWITCH FOR POWER TO HRL-1 UNIT. DISCONNECT SWITCH IS FURNISHED BY THE MECHANICAL CONTRACTOR AND POWERED BY THE ELECTRICAL CONTRACTOR. THE ELECTRICAL CONTRACTOR SHALL MAKE ALL FINAL CONNECTIONS AND COORDINATE LOCATION OF SWITCH PRIOR TO ROUGH-IN.
 - FUSED DISCONNECT SWITCH FOR POWER TO EF-3E10. PROVIDE 20A FUSES.
 - REUSE EXISTING 200A/3P CIRCUIT BREAKER IN MDP-2 CIRCUIT #40 FOR FEED TO NEW PANELBOARD 75.1 AND REUSE CIRCUIT BREAKER TAG. COORDINATE ANY SHUTDOWNS WITH VA PRIOR TO STARTING WORK.
 - PROVIDE A NEW 100A/3P CIRCUIT BREAKER IN SWBD-2A FOR FEED TO NEW HRL-1. AIC RATING SHALL MATCH EXISTING PANEL AIC RATING. CONTRACTOR SHALL FIELD VERIFY PRIOR TO ORDERING.
 - VFD IS PROVIDED BY THE MECHANICAL CONTRACTOR. REFER TO DETAIL 5 ON THIS SHEET FOR WIRING INFORMATION.
 - CIRCUITS 2L1-1 AND 2L1-2 SHALL BE RUN IN THE SAME CONDUIT TO JUNCTION BOX AT EF-3E10 TO ALLOW FOR ONLY ONE ROOF PENETRATION. THE CIRCUITS SHALL THEN EXTEND TO EACH DEVICE. ELECTRICAL CONTRACTOR SHALL SEAL ALL ROOF PENETRATIONS.
 - CONNECT NEW FEEDER TO PANEL "ES-SPD-2" TO EXISTING 225A-3P SPARE BREAKER IN EXISTING PANEL "DP-ES-E".
 - UP TO FLOOR ABOVE, REFER TO DRAWING E101 FOR CONTINUATION.

Addendum 01 Revisions:	05/14/15 Date	CONSULTANTS:	SEAL 	ARCHITECTS/ENGINEERS: 6587 Hamilton Avenue Pittsburgh, Pennsylvania 15206 Ph: 412.287.7333 Fax: 412.287.7334 www.ae-works.com AE Works Project Number: 13037	Drawing Title ELECTRICAL - SECOND FLOOR AND ROOF POWER PLAN	Project Title: ERIE VAMC - UPGRADE SPS	Project Number 562-14-114	Office of Construction and Facilities Management
					Approved: Project Director	Location: 135 EAST 38TH STREET, ERIE, PA, 16504	Drawing Number 01-E102	
					Date: January 9, 2015	Checked: JJD	Drawn: JMJ	Dwg. 21 of 21