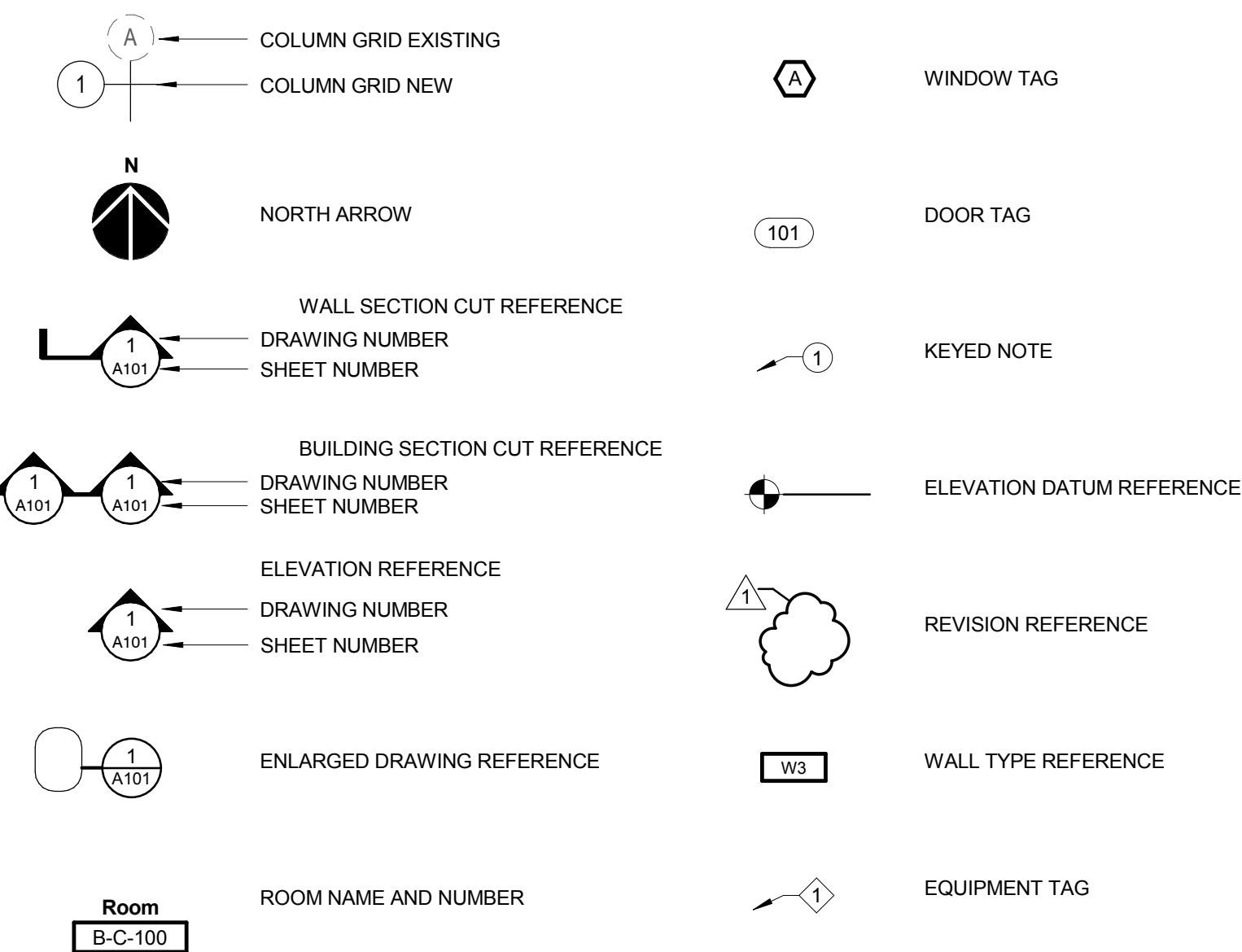
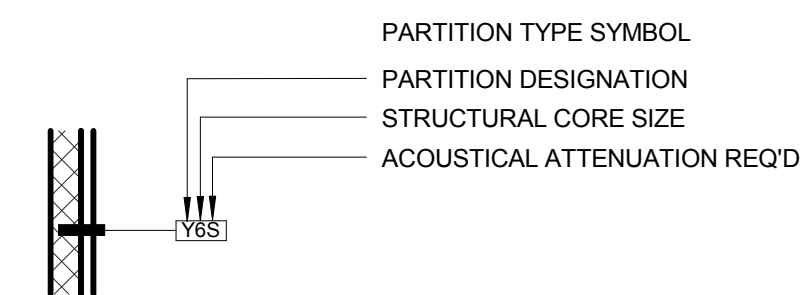




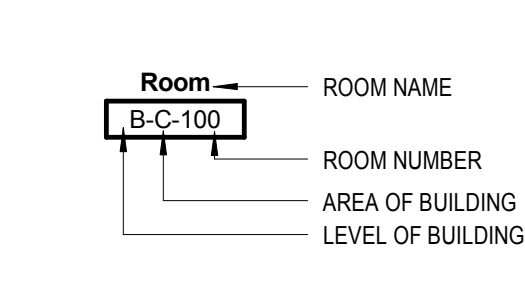
# REFERENCE SYMBOLLOGY



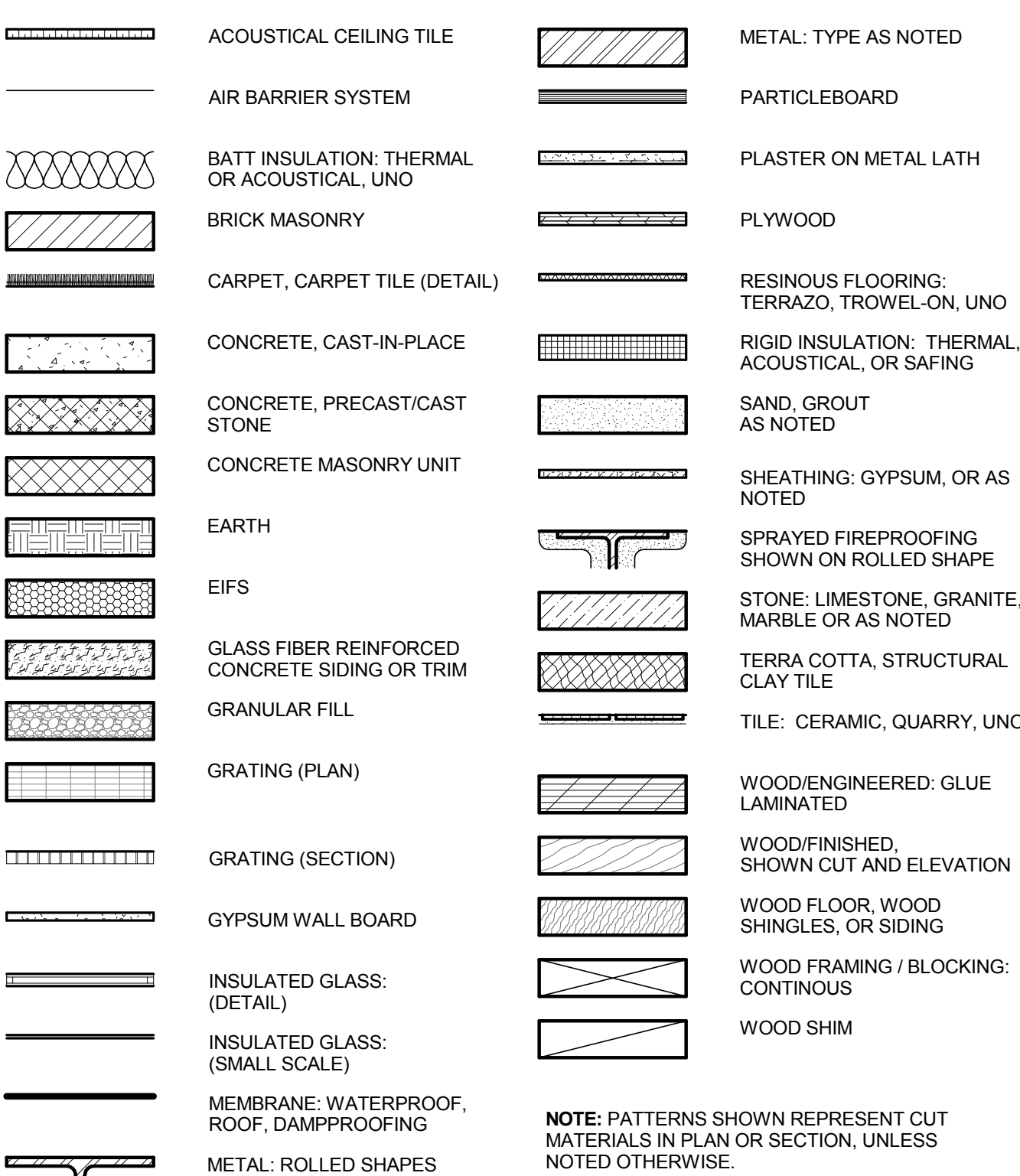
# INTERIOR PARTITION LEGEND



# ROOM NUMBER LEGEND

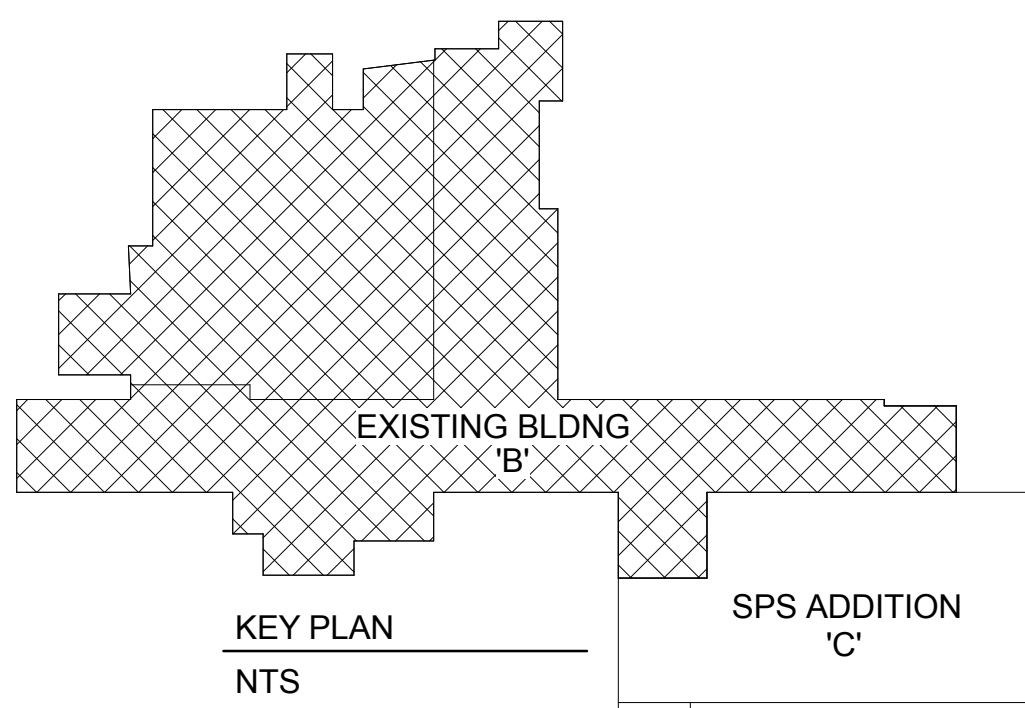


# MATERIALS LEGEND



NOTE: PATTERNS SHOWN REPRESENT CUT MATERIALS IN PLAN OR SECTION, UNLESS NOTED OTHERWISE.

# BUILDING LEGEND



# GENERAL NOTES

- ALL WALLS ARE 'B3' WALL PARTITION TYPE UNLESS NOTED OTHERWISE. REFER TO SHEET AS-001 FOR WALL HEIGHTS AND TYPE DESCRIPTIONS.
- SEE SHEET G1-002 FOR GRAPHIC SYMBOL LEGEND.
- COORDINATE WORK OF ALL TRADES PRIOR TO STARTING CONSTRUCTION.
- ALL DIMENSIONS ARE TO GRID LINES, FACE OF STUD FRAMING, OR FACE OF CONCRETE/MASONRY UNITS UNLESS NOTED OTHERWISE.
- PROVIDE GYPSUM BOARD CONTROL JOINTS AND MASONRY CONTROL JOINTS AT WALLS OVER 30'-0" IN LENGTH. LOCATE ABOVE EDGE OF OPENING WHEN POSSIBLE.
- AT FIRE RATED WALLS WHERE OPENINGS ARE GREATER THAN 16 SQUARE INCHES OR WHERE TOTAL AREA OF OPENINGS EXCEEDS 100 SQUARE INCHES IN 100 SQUARE FEET, WRAP 6" TYPE 'X' GYPSUM BOARD BEHIND OPENINGS PER U.L. DESIGN #J510.
- FRAME DOOR OPENINGS 4" FROM FACE OF PERPENDICULAR WALL ON HINGE SIDE AND 1'-6" FROM FACE OF PERP. WALL ON LATCH SIDE UNLESS NOTED OTHERWISE.
- THE CONTRACTORS INVOLVED IN THIS PROJECT SHALL BE RESPONSIBLE FOR DESIGNING AND INSTALLING THEIR RESPECTIVE WORK AND SYSTEMS TO MEET ALL APPLICABLE FEDERAL, STATE, AND LOCAL CODES, LAWS, SAFETY REGULATIONS, HAZARDOUS WASTE LAWS, ETC. THE CONTRACTORS SHALL FURNISH ALL NECESSARY PERMITS.
- PROVIDE MOISTURE RESISTANT GYPSUM BOARD IN ALL RESTROOMS AND WET AREAS.
- THE CONTRACTOR SHALL REVIEW THE DRAWINGS AND UNDERSTAND THE SCOPE OF THE DRAWINGS TO BE THE FOLLOWING: THESE CONSTRUCTION DOCUMENTS (DRAWINGS, SPECIFICATIONS, ADDENDA, ETC.) INDICATE THE GENERAL SCOPE OF THE PROJECT IN TERMS OF ARCHITECTURAL DESIGN CONCEPTS, THE DIMENSION OF THE BUILDING, THE MAJOR STRUCTURAL ELEMENTS, AND THE MAJOR STRUCTURAL, MECHANICAL, AND ELECTRICAL SYSTEMS. THE DOCUMENTS DO NOT AND ARE NOT INTENDED TO INDICATE OR DESCRIBE IN DETAIL ALL THE NECESSARY WORK REQUIRED FOR FULL PERFORMANCE OF, AND COMPLETION OF THE REQUIREMENTS OF THE CONTRACT, ON THE BASIS OF THE GENERAL SCOPE INDICATED IN THESE DOCUMENTS. THE TRADE CONTRACTOR SHALL FURNISH ALL ITEMS REQUIRED FOR THE PROPER EXECUTION AND COMPLETION OF THE WORK. ALL WORK SHALL BE COMPLETE IN EVERY DETAIL AND THE CONTRACTORS SHALL PROVIDE A ONE YEAR WARRANTY FOR THEIR WORK.
- GENERAL CONTRACTOR IS TO FOLLOW AND OBEY ALL FEDERAL, STATE AND LOCAL CODES, LAWS, SAFETY REGULATIONS AND HAZARDOUS WASTE LAWS, ETC.
- DO NOT SCALE DRAWINGS. DIMENSIONS SHALL GOVERN EACH BUILDING COMPONENT LOCATION. BRING ANY DISCREPANCIES TO THE ARCHITECT'S ATTENTION IN WRITING IMMEDIATELY.
- FIRE EXTINGUISHER CABINET LOCATIONS SHOWN ARE SUGGESTED LOCATIONS ONLY. FIRE EXTINGUISHERS AND CABINETS TO COMPLY WITH NFPA 101. CONTRACTOR TO VERIFY QUANTITY AND EXACT LOCATIONS WITH FIRE MARSHAL PRIOR TO INSTALLATION.
- BUILDING FIRST FLOOR IS REFERENCE ELEVATIONS IS 100'-0". SEE CIVIL DRAWINGS FOR U.S.G.S. ELEVATION.
- ALL WORK SHALL BE PERFORMED IN A SKILLED WORKMANSHIP TYPE AND MANNER ACCEPTABLE TO THE ARCHITECT AND OWNER.
- PROVIDE SHEET METAL OR FIRE RETARDANT WOOD BLOCKING IN WALL CAVITIES FOR ITEMS THAT ARE REQUIRED TO BE SECURED TO THE WALLS.
- TAPE AND SPACKLE ALL PENETRATIONS IN GYPSUM BOARD PARTITIONS, INCLUDING, BUT NOT LIMITED TO WATER LINES, DRAINS, CONDUIT, THERMOSTATS, ETC. INSTALL FIRE RETARDANT SEALANT AT PENETRATIONS IN RATED PARTITIONS AS REQUIRED BY THE ARCHITECT.
- ALL CONCRETE MASONRY UNITS SHALL BE LAID RUNNING BOND UNLESS NOTED OTHERWISE.
- ALL CONCRETE MASONRY UNITS TO BE NORMAL WEIGHT UNLESS NOTED OTHERWISE.
- CAULK INTERSECTION BETWEEN DIFFERENT MATERIALS.
- CAULK TOILET FIXTURES TO FLOOR PER SEALANT SCHEDULE IN SPECIFICATIONS.
- CAULK ALL COUNTERTOP BACKSPASHES TO WALL USING SILICONE SEALANT.
- ALL NEW INTERIOR FINISHES, INCLUDING FLOOR, WALL, AND CEILING MATERIALS, SHALL BE IN ACCORDANCE WITH FLAME SPREAD AND SMOKE DEVELOPMENT REQUIREMENTS, CHAPTER 8, CURRENT EDITION OF THE INTERNATIONAL BUILDING CODE.
- EXISTING CONDITIONS SHALL BE FIELD VERIFIED PRIOR TO BIDDING OR BEGINNING OF WORK. ANY ERRORS OR OMISSIONS SHALL BE BROUGHT TO THE ATTENTION OF THE ARCHITECT.
- COVER ALL RETURN AIR AND EXHAUST GRILLES WITH FILTER MEDIA FOR DURATION OF JOB AND CHANGE REGULARLY.

# ARCHITECTURAL ABBREVIATIONS

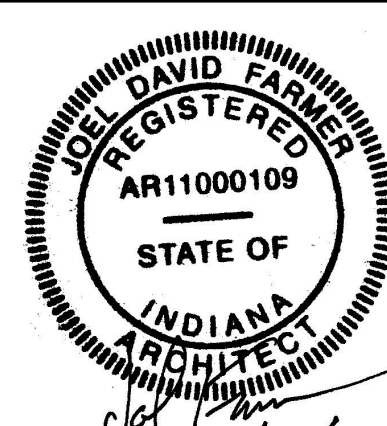
A	A LABEL	BSMT	BASMENT	EHD	ELECTRICAL HAND DRYER	O	OUT TO OUT
A/C	AIR CONDITION	BTWN	BETWEEN	EJ	EXPANSION JOINT	OA	OVERALL
A/C UNIT	AIR CONDITIONING UNIT	BU	BUSH	EL	ELEVATION	OC	ON CENTER
A/E	ARCHITECT/ENGINEER	BUR	BUILT-UP ROOFING	ELEC	ELECTRICAL	OD	OUTSIDE DIAMETER
AAMA	AMERICAN ARCHITECTURAL MANUFACTURERS ASSOCIATION	C	CELSIUS CHANNEL	ELEV	ELEVATOR	OF	OUTSIDE FACE
AB	ANCHOR BOLT	C	CHANNEL CELSIUS	ENCL	ENCLOSURE	OF CI	OWNER FURNISHED - CONTRACTOR
AC	ACROUSTICAL	C CONC	CATCH BASIN OR CORNER BEAD	ENGR	ENGINEER	OH	OVERHEAD
ACI	AMERICAN CONCRETE INSTITUTE	C LABEL	CEMENTITIOUS (BACKER) BOARD	ESMT	EASEMENT	OPNG	OPENING
ACOUS	ACOUSTICAL	C/C	CENTER TO CENTER	EWC	ELECTRICAL WATER COOLER	OPP	OPPOSITE
ACP	ACOUSTICAL CEILING PANEL	CAB	CABINET	EXT	EXTENDING	OPP HAND	OPPOSITE HAND
ACS DR	ACCESS DOOR	CAC	CATCH BASIN OR CORNER BEAD	EXT	EXTENDING	OPT	OPTIONAL
ACS FLR	ACCESS FLOOR	CB	CATCH BASIN OR CORNER BEAD	FACE	FACE TO FACE	ORD	OVERFLOW ROOF DRAIN
ACS PNL	ACCESS PANEL	CBB	CEMENTITIOUS (BACKER) BOARD	F/F	FACE TO FACE	ORIG	ORIGINAL
ACST	ACOUSTIC	CC	CUBIC CENTIMETER	FBD	FIBERBOARD	P	PERIMETER
ACT	ACOUSTICAL CEILING TILE	CCTV	CLOSED CIRCUIT TV	FDN	FOUNDATION	PERIM	PERIMETER
AD	AREA DRAIN	CCW	COUNTERCLOCKWISE	FE	FIRE EXTINGUISHER	PERM	PERMANENT
ADA	AMERICANS WITH DISABILITIES ACT	CEM	CEMENT	FHC	FIRE HOSE CABINET	PH	PHASE
ADB	AUTOMATIC DOOR BOTTOM	CEM PLAS	CEMENT PLASTER	FIN	FIBERGLASS	PL	PLATE
ADC	AUTOMATIC DOOR CLOSER	CER	CERAMIC	FIN FL	FINISHED FLOOR	PLAM	PLASTIC LAMINATE
ADD	ADDENDUM	CER	CONTRACTOR FURNISHED	FLOOR	FLOURESCENT	PLAS	PLASTIC
ADDL	ADDITIONAL	CF	CONTRACTOR FURNISHED	FLR (FLRG)	FLOORING	PLBG	PLUMBING
ADDN	ADDITION	CFI/CI	FURNISHED/CONTRACTOR INSTALLED	FOC	FACE OF CONCRETE	PLYWD	PLYWOOD
ADH	ADHESIVE	CFI/OI	CONTRACTOR FURNISHED/CONTRACTOR INSTALLED	FOS	FACE OF FINISH	PNL	PANEL
ADJ	ADJACENT	CFLG	COUNTERFLASHING	FTG	FOOTING	PRCST	PRECAST
ADMIN	ADMINISTRATION	FTM	FOOTING PER MINUTE	FR	FIRE RATING	PREFAB	PREFABRICATED
AFC	ABOVE FINISHED COUNTER	CFMF	COLD-FORMED METAL FRAMING	FRT	FIRE TREATMENT	PREFIN	PREFINISHED
AFF	ABOVE FINISH FLOOR	CFS	CUBIC FEET PER SECOND	FURN	FURNITURE	PRELIM	PRELIMINARY
AFG	ABOVE FINISHED GRADE	CG	CENTER OF GRAVITY OR CORNER	FURR	FURRING	PREP	PREPARATION
AFS	ABOVE FINISHED SLAB	CGD	CORNER GUARD	G	GALVANIZED	PRKG	PARKING
AGA	AMERICAN GAS ASSOCIATION	CGSFU	CERAMIC GLAZED STRUCTURAL FACINGS UNITS	GALV	GALVANIZED	PROJ	PROJECT
AGC	AGGREGATE	CH BD	CHALKBOARD	GDR	GUARDRAIL	PT	PRETREATED
AGGR	AGGREGATE	CHAN	CHANNEL	GLZ	GLAZING	PTD	PAINTED
AHJ	AUTHORITY HAVING JURISDICTION	CHEM	CHEMICAL	GUT	GUTTER	PTN	PARTITION
AHR	ANCHOR	CHFR	CHAMFER	GYP BD/GWB	GYPSUM BOARD	Q	QUARRY TILE
AHU	AIR HANDLING UNIT	CHK	CHECK	H	HANDICAPPED	R	RADIUS
AIA	AMERICAN INSTITUTE OF ARCHITECTS	CI	CAST IRON	HC	HOLLOW CONCRETE MASONRY UNIT	RD	ROOF DRAIN
AISC	AMERICAN INSTITUTE OF STEEL CONSTRUCTION	CIP	CAST-IN-PLACE	HCMU	HOLLOW CORE WOOD	REC	RECESSED
ALT	ALTERNATE	CIR	CIRCLE	HOWEHOW	HARDWARE	RECP	RECEPTACLE
ALT NO	ALTERNATE NUMBER	CIRC	CIRCULAR	HM	HOLLOW METAL	REF	REFERENCE
ALUM	ALUMINUM	CJ	CONTROL JOINT	HMD	HOLLOW METAL DOOR	REIN	REINFORCE(D)ING(MENT)
AMP	AMPERE	CL	CENTER LINE	HNDRL	HANDRAIL	REQD	REQUIRED
AMT	AMOUNT	CLD	CLADDING	HORIZ	HORIZONTAL	RESIL	RESILIENT
ANOD	ANODIZED	CLR	CLEAR	HT	HEIGHT	RLG	RAILING
ANSI	AMERICAN NATIONAL STANDARDS INSTITUTE	CM	CONSTRUCTION MANAGEMENT	HVAC	HEATING, VENTILATION, AIR CONDITIONING	RM	ROOM
ANT	ANTENNA	CMU	CONCRETE MASONRY UNIT	I	INSULATED CONCRETE FORM	RND	ROUND
APA	AMERICAN PLYWOOD ASSOCIATION	CNR	CORNER	ICF	INSULATED CONCRETE FORM	RO	ROUGH OPENING
APPD	APPROVED	CNTR	COUNTER	ID	INSIDE DIAMETER	RTU	ROOF TOP UNOT
APPROX	APPROXIMATE	COLCOLUM	COLUMN	IF	INSIDE FACE	S	SANITARY
APT	APARTMENT	COM	COMMON	INCAND	INCANDESCENT	SAN	SANITARY
ARCH	ARCHITECT (URAL)	COMB	COMBINATION, COMBINED	INDIC	INDICATE	SCW	SOLID CORE WOOD
ASB	ASBESTOS	COMM	COMMUNICATION	INS ALUM	INSULATED ALUMINUM	SF	SQUARE FOOT
ASI	ARCHITECT'S SUPPLEMENTAL INSTRUCTION	COMP	COMPONENT	INSUL	INSULATION	SP	STAND PIPE
ASKLR	ASPHALT	CONC	CONCRETE	INT	INTERIOR	SPKLR	SPRINKLER
ASPH	ASPHALT	CONC FLR	CONCRETE FLOOR	J	JOINT	SS	STAINLESS STEEL
ASSN	ASSOCIATION	CONSTR	CONSTRUCTION	JST	JOIST	STD	STANDARD
ASTM	AMERICAN SOCIETY FOR TESTING AND MATERIALS	CONT	CONTINUOUS	JT	JOIST	STL	STEEL
ATCH	ATTACHMENT	CONTR	CONTRACTOR	K	KICKPLATE	STOR OR ST	STORAGE
ATM	AUTOMATIC TELLER MACHINE	COORD	COORDINATE	L	LAMINATION	STRUCT	STRUCTURAL
ATS	AUTOMATIC TRANSFER SWITCH	CORR	CORRIDOR	LAM	LAMINATION	SUSP	SUSPENDED
AUTO	AUTOMATIC	CPCPT	CARPET	LAV	LAVATORY	SYM	SYMBOL
AUX	AUXILIARY	CPM	CRITICAL PATH METHOD	LD BRG	LOAD BEARING	SYS	SYSTEM
AV	AUDIO VISUAL	CPRS	COMPRESSIBLE	LDG	LANDING	T	TONGUE AND GROOVE
AVE	AVENUE	CPT	CARPET	LD	LOAD	T&G	TONGUE AND GROOVE
AVG	AVERAGE	CRS	COURSE	LD BRG	LOAD BEARING	TAFS	TEXTURE APPLIED FINISH
AW	ACID WASTE	CRS	COURSE	LDG	LANDING	TB	TOWEL BAR
AWI	ARCHITECTURAL WOODWORKING INSTITUTE	CSB	CONCRETE SPLASH BLOCK	LF	LINEAR FOOT	TD	TOWEL DISPENSER
AWPA	AMERICAN WOOD PRESERVERS' ASSOCIATION	CSG	CASING	LFRV	LOUVERED ROOF VENT	TDR	TOWEL DISPENSER / RECEPTACLE
AWS	AMERICAN WELDING SOCIETY	CSI	CONSTRUCTION SPECIFICATIONS INSTITUTE	LTG	LIGHTING	TEL	TELEPHONE
AWT	ACOUSTICAL WALL TREATMENT	CSK	COUNTER SUNK	LTWT	LIGHTWEIGHT	TEMP	TEMPORARY
B	CLASS B DOOR	CSMT	CASEMENT	LVR	LOUVER	TF	TOP OF FINISH FLOOR
B LABEL	BASE PLATE	CSWK	CASEWORK	M	MASONRY	TFE	TOP OF FINISH FLOOR
B PL	BALCONY	CT	CERAMIC TILE	MAS	MASONRY	THRES	THRESHOLD
BALC	BALCONY	CTB	CERAMIC TILE BASE	MATL	MATERIAL	TJ	TOP OF JOIST
BAT	BATTEN	CTF	CERAMIC TILE FLOOR	MAX	MAXIMUM	TOT	TOTAL
BB	BULLETIN BOARD	CTG	COATING	MBRN	MEMBRANE	TPH	TOILET PAPER HOLDER
BD	BOARD	CTR	CENTER CONTOUR	MECH	MECHANICAL	TSL	TOP OF SLAB
BD FT	BOARD FEET	CTRL	CONTROL	MED	MEDICINE (MEDICAL)	TST	TOP OF STEEL
BET	BETWEEN	CTV	CABLE TELEVISION	MET	METAL	TYP	TYPICAL
BEV	BEVEL	CU	COPPER C	MIN	MINIMUM	U	UNIFORM
BH	BULKHEAD	CU FT	CUBIC FEET	MIR	MIRROR	UNO	UNLESS NOTED OTHERWISE
BHMA	BUILDER'S HARDWARE MANUFACTURERS ASSOCIATION	CU IN	CUBIC INCH	MISC	MISCELLANEOUS	UR	URNAL
BI FLD DR	BIFOLDING DOORS	CU YD	CUBIC YARD	MLDG	MOLDING	V	VINYL BASE
BLD	BUILD	CURT	CURTAIN	MLWK	MILLWORK	VB	VINYL BASE
BLDG	BUILDING	CYL	CYLINDER	MO	MASONRY OPENING	VCT	VINYL COMPOSITION TILE
BLK	BLOCK	CYL L	CYLINDER LOCK	MTD	MOUNTED	VERT	VERTICAL
BLKG	BLOCKING	DEMO	DEMOLITION	MTG	MOUNTING	VIN	VINYL
BLKT	BLANKET	DF	DRINKING FOUNTAIN	MULL	MULLION	VT	VINYL TILE
BLVD	BOULEVARD	DFR	DOOR FRAME	MULT	MULTIPLE	WWC	VINYL WALL COVERING
BM	BEAM OR BENCHMARK	DFR	DOOR FRAME	N	NOT APPLICABLE	W	WALL TO WALL
BOT	BOTTOM	DIM	DIMENSION	N/A	NOT APPLICABLE	WW	WALL TO WALL
BR	BEDROOM	DISP	DISPENSER	ND	NAPKIN DISPENSER	WC	WATER CLOSET
BRG	BRACING	DLV	DOOR LOUVER	NIC	NOT IN CONTRACT	WD	WOOD
BRDG	BRIDGING	DO	DOOR OPENING	NOM	NOMINAL	WIDW	WINDOW
BRDG JST	BRIDGING JOIST	DS	DOWNSPOUT	NR	NAPKIN RECEPTACLE	WH	WALL HUNG
BRG	BEARING	DT	DRAIN TILE	NTS	NOT TO SCALE	WT	WEIGHT
BRG PL	BEARING PLATE	DWG	DRAWING				
BRKT	BRACKET						
BRZ	BRONZE						

100% CONSTRUCTION DOCUMENTS  
FULLY SPRINKLERED

# ARCHITECT/ENGINEERS:



# CONSULTANTS:



Drawing Title  
SYMBOLS/LEGEND/ARCHITECTURAL ABBREVIATIONS

Approved: Project Director

Project Title  
SPS BASEMENT ADDITION  
VA PROJECT # 610A4-12-400

Location  
2121 Lake Ave. Fort Wayne, IN 46805

Date  
08/15/2014

Checked  
JDF/ FMF

Drawn  
APN

Project Number  
2010.00629.0005

Building Number  
01

Drawing Number  
GI-002

Office of  
Construction  
and Facilities  
Management

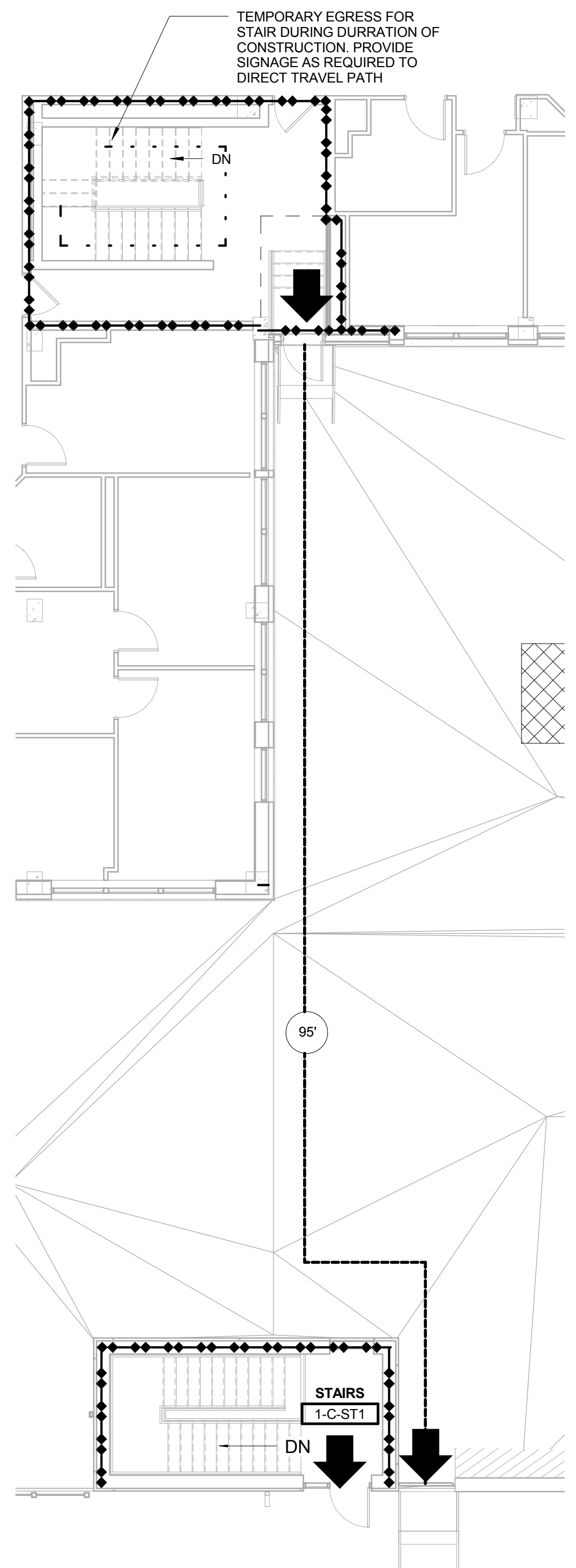
VA Department of  
Veterans Affairs






VA

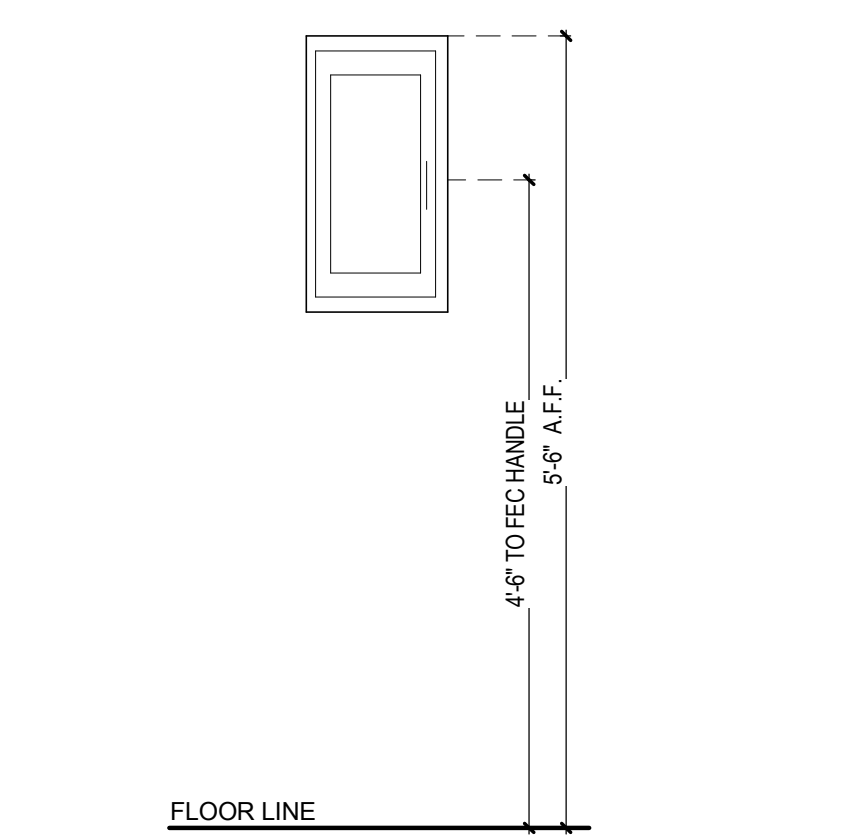
VA NORTHERN INDIANA  
HEALTH CARE SYSTEM,  
FORT WAYNE  
2121 Lake Ave. Fort  
Wayne, IN 46805



[illegible]



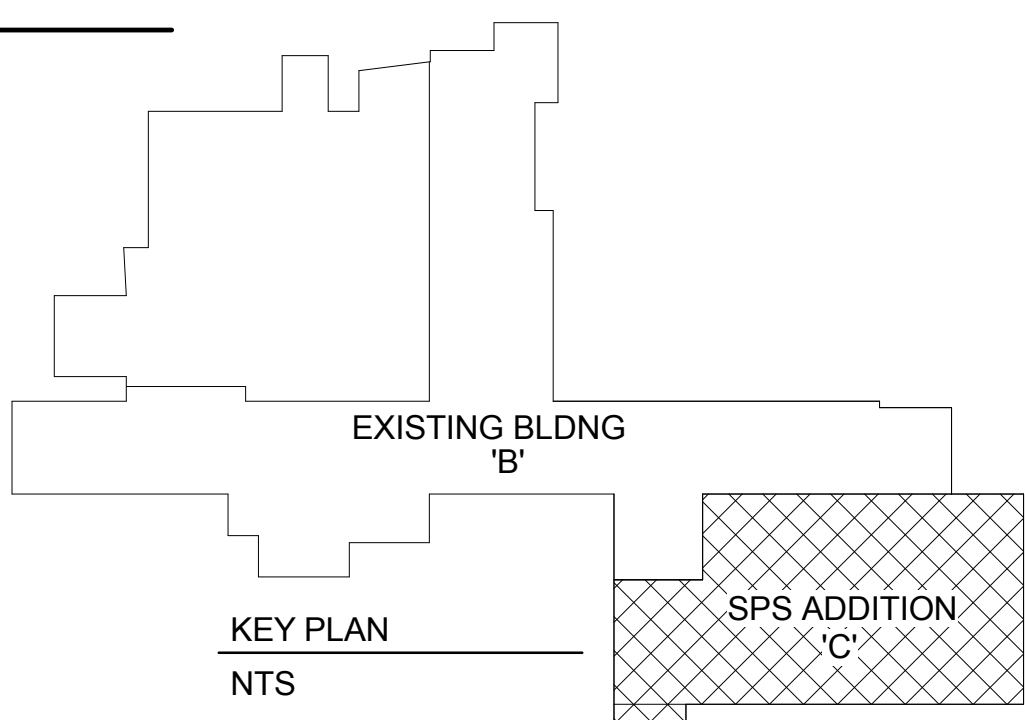
	SMOKE BARRIER
	2 HOUR RATED FIREWALL
	TRAVEL DISTANCE
	EXIT
	FEC
SEMI RECESSED FIRE EXTINGUISHER CABINET W/ FIRE EXTINGUISHER VERIFY FEC LOCATIONS AND QUANTITIES W/ OWNER AND FIRE MARSHAL.	
<b>NFPA 101 Life Safety Code</b> <b>IBC 2006/Indiana Building Code 2008</b> <b>NFPA 10</b>	
<b>A. BUILDING OCCUPANCY CLASSIFICATION</b>	
1. I, 2	
<b>B. BUILDING CONSTRUCTION TYPE</b>	
1. Type II (222)-NFPA	
2. I B - IBC 2006	
<b>C. BUILDING HEIGHT</b>	
1. > 4 stories allowed	
a. Actual: 5 stories	
<b>D. FIRE SUPPRESSION SYSTEM</b>	
1. Fully automatic supervised fire sprinkler system is installed	
<b>E. OCCUPANCY LOAD</b>	
1. OFFICE	1532/1(100sf/occ)=15 People
2. PS	2591/1(100sf/occ)=26 People
3. STORAGE/WAREHOUSE	3314/50(60sf/occ)=7 People
4. MECHANICAL	3310/300(sfo/occ)=11 People
5. LOCKER ROOM	1568/60(sfo/occ)=26 People
6. LOUNGE	6901/156(sfo/occ)=44 People
Total Occupant Load:	126 People
<b>F. EXITING</b>	
1. Travel distance to an exit: 300 feet allowed	
<b>G. CORRIDORS</b>	
1. Disjunct corridors shall not exceed 20 feet	
a. All corridors within the project area are less than 20 feet to an exit or point where an occupant can travel two ways to an exit	
b. Fire Rating: No requirements.	
<b>H. GROSS AREA (UPDATED 7-30-2014)</b>	
LOWER LEVEL:	15,705 SQFT
FIRST LEVEL:	270 SQFT
TOTAL:	15,945 SQFT



3  
LS-001

**FIRE EXT. CABINET ELEVATION**

3/4" = 1'-0"



100% CONSTRUCTION DOCUMENTS  
FULLY SPRINKLERED

[illegible]