

SHEET KEYNOTES

1. LIGHT DUTY ASPHALT PAVEMENT
2. HEAVY DUTY ASPHALT PAVEMENT
3. HEAVY DUTY CONCRETE PAVEMENT
4. CONCRETE SIDEWALK
5. COMBINED CONCRETE CURB AND WALK
6. 24" CONCRETE CURB AND GUTTER
7. CONCRETE STEPS WITH HANDRAILS
8. CURB TAPER
9. CONCRETE RETAINING WALL (REFER TO STRUCTURAL PLANS)
10. ADA ACCESSIBLE RAMP, MODIFIED TYPE 'K'
11. ADA ACCESSIBLE RAMP
12. GRAVEL STRIP (TO REDUCE STORM WATER VELOCITY)
13. 24" STOP BAR (WHITE, PAINTED)
14. STOP SIGN
15. POLE MOUNTED ADA PARKING SIGN
16. ADA ACCESSIBLE PARKING SPACE STRIPING
17. PARKING STALL STRIPING
18. NO PARKING STRIPING
19. CONCRETE WHEEL STOP
20. GRASS / LANDSCAPE AREA
21. 8" BOLLARD (3 PLACED AT 4' O.C. BEHIND FACE OF CURB)
22. 6' X 6' LANDING (MAX. 2% SLOPE)

PROPOSED LEGEND

- LIGHT DUTY ASPHALT PAVEMENT
- HEAVY DUTY ASPHALT PAVEMENT
- CONCRETE
- LOW OCCUPANCY PORTION OF BUILDING

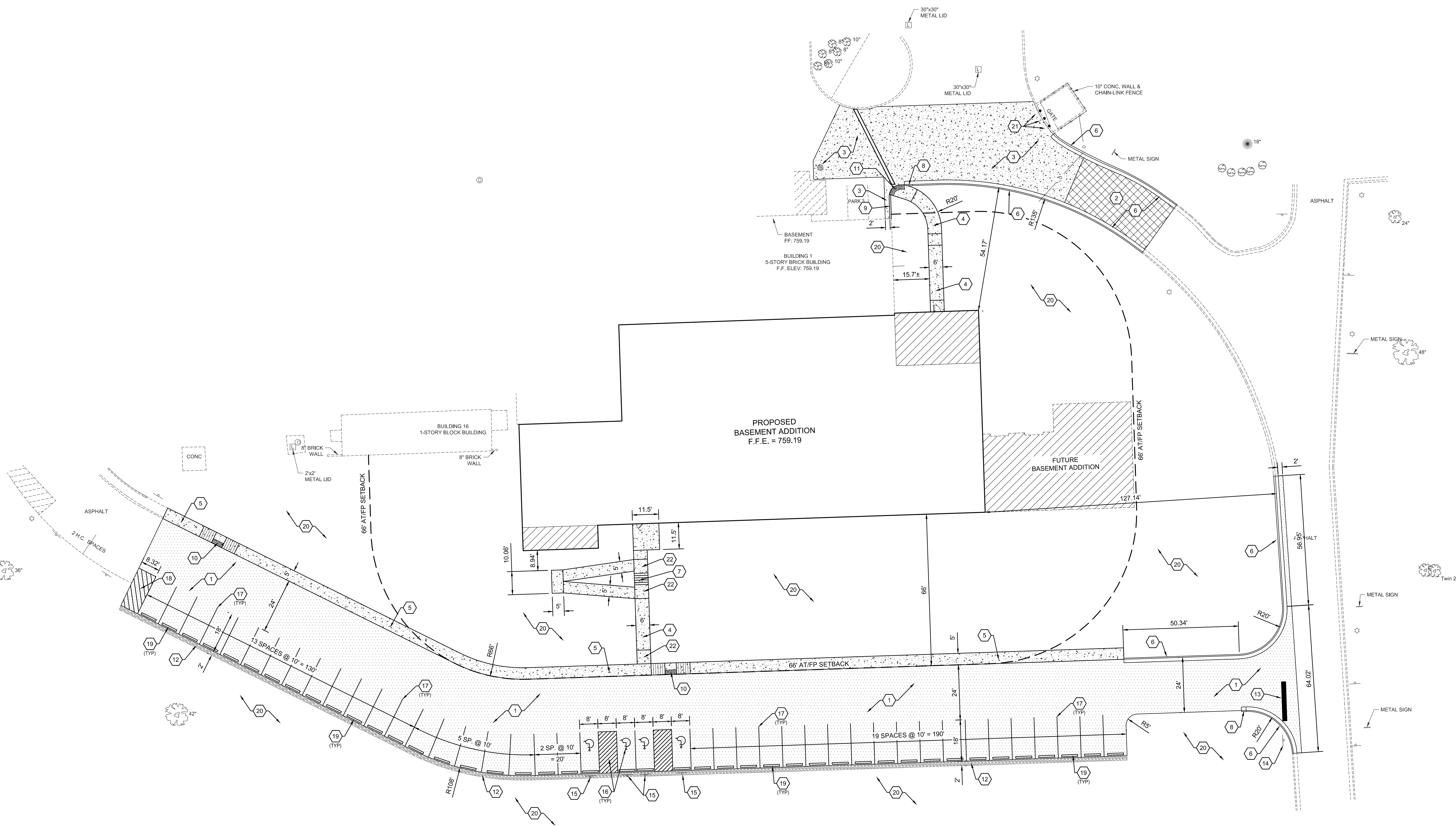
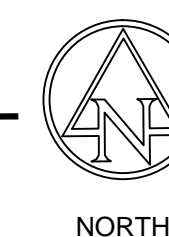
PARKING TABLE

EXISTING PARKING SPACES REMOVED (INCLUDES 4 ADA SPACES REMOVED)	68
NEW PARKING SPACES (INCLUDES 4 ADA SPACES)	43

CAUTION !!
THE LOCATIONS OF ALL EXISTING UNDERGROUND UTILITIES SHOWN ON THIS PLAN ARE BASED UPON ABOVE GROUND EVIDENCE (including, but not limited to, manholes, inlets, valves, and marks made upon the ground by others) AND ARE SPECULATIVE IN NATURE. THERE MAY ALSO BE OTHER EXISTING UNDERGROUND UTILITIES FOR WHICH THERE IS NO ABOVE GROUND EVIDENCE OR FOR WHICH NO ABOVE GROUND EVIDENCE WAS OBSERVED. THE EXACT LOCATIONS OF SAID EXISTING UNDERGROUND UTILITIES SHALL BE VERIFIED BY THE CONTRACTOR PRIOR TO ANY AND ALL CONSTRUCTION.

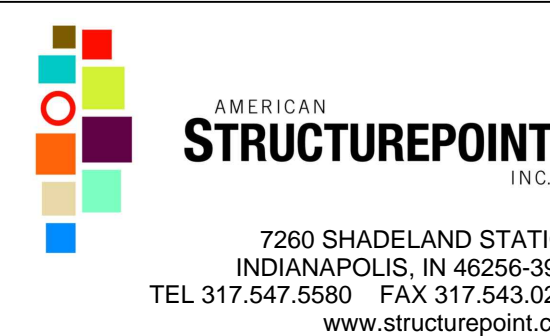
SITE PLAN

1" = 20'



VA NORTHERN INDIANA
HEALTH CARE SYSTEM,
FORT WAYNE
2121 Lake Ave,
Fort Wayne,
Indiana 46805

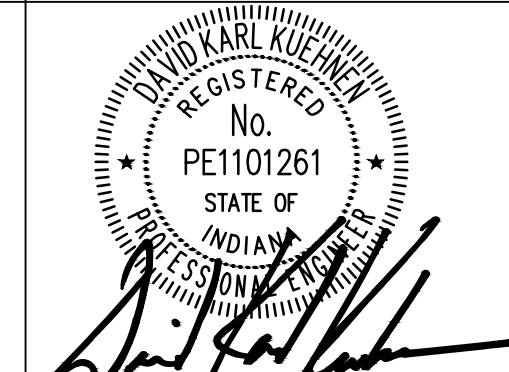
ARCHITECT/ENGINEERS:



Ross & Baruzzini

8250 Haverstick Road
Suite 285
Indianapolis, IN 46240
317.638.8383

CONSULTANTS:



Drawing Title
Site Plan

Approved: Project Director

Project Title
SPS BASEMENT ADDITION
VA PROJECT # 610A4-12-400

Location
2121 Lake Ave, Fort Wayne, IN 46805

Date
08-15-2014

Checked
DKK

Drawn
JLG

Project Number
610A4-12-400

Building Number
01

Drawing Number
CS-101

100% Construction Documents

Office of
Construction
and Facilities
Management

VA Department of
Veterans Affairs