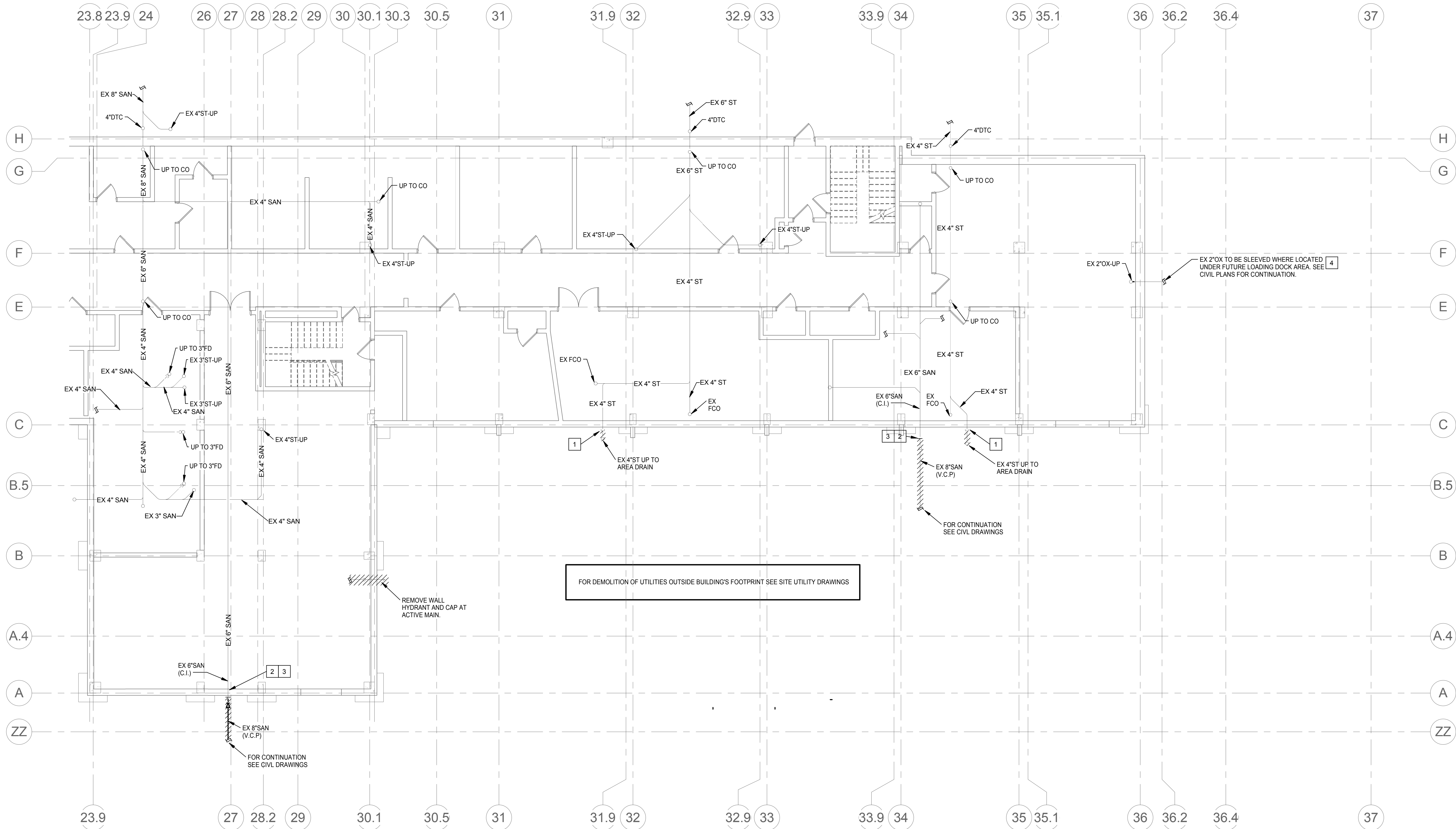


three eighths inch = one foot
one eighth inch = one foot
one quarter inch = one foot
one half inch = one foot
three quarters inch = one foot
one inch = one foot
one and one half inches = one foot
two inches = one foot
three inches = one foot
four inches = one foot
five inches = one foot
six inches = one foot
seven inches = one foot
eight inches = one foot
nine inches = one foot
ten inches = one foot
eleven inches = one foot
twelve inches = one foot
thirteen inches = one foot
fourteen inches = one foot
fifteen inches = one foot
sixteen inches = one foot
seventeen inches = one foot
eighteen inches = one foot
nineteen inches = one foot
twenty inches = one foot
twenty one inches = one foot
twenty two inches = one foot
twenty three inches = one foot
twenty four inches = one foot
twenty five inches = one foot
twenty six inches = one foot
twenty seven inches = one foot
twenty eight inches = one foot
twenty nine inches = one foot
thirty inches = one foot
thirty one inches = one foot
thirty two inches = one foot
thirty three inches = one foot
thirty four inches = one foot
thirty five inches = one foot
thirty six inches = one foot
thirty seven inches = one foot
thirty eight inches = one foot
thirty nine inches = one foot
forty inches = one foot
forty one inches = one foot
forty two inches = one foot
forty three inches = one foot
forty four inches = one foot
forty five inches = one foot
forty six inches = one foot
forty seven inches = one foot
forty eight inches = one foot
forty nine inches = one foot
fifty inches = one foot
fifty one inches = one foot
fifty two inches = one foot
fifty three inches = one foot
fifty four inches = one foot
fifty five inches = one foot
fifty six inches = one foot
fifty seven inches = one foot
fifty eight inches = one foot
fifty nine inches = one foot
sixty inches = one foot
sixty one inches = one foot
sixty two inches = one foot
sixty three inches = one foot
sixty four inches = one foot
sixty five inches = one foot
sixty six inches = one foot
sixty seven inches = one foot
sixty eight inches = one foot
sixty nine inches = one foot
seventy inches = one foot
seventy one inches = one foot
seventy two inches = one foot
seventy three inches = one foot
seventy four inches = one foot
seventy five inches = one foot
seventy six inches = one foot
seventy seven inches = one foot
seventy eight inches = one foot
seventy nine inches = one foot
eighty inches = one foot
eighty one inches = one foot
eighty two inches = one foot
eighty three inches = one foot
eighty four inches = one foot
eighty five inches = one foot
eighty six inches = one foot
eighty seven inches = one foot
eighty eight inches = one foot
eighty nine inches = one foot
ninety inches = one foot
ninety one inches = one foot
ninety two inches = one foot
ninety three inches = one foot
ninety four inches = one foot
ninety five inches = one foot
ninety six inches = one foot
ninety seven inches = one foot
ninety eight inches = one foot
ninety nine inches = one foot
one hundred inches = one foot



- KEYED NOTES:**
- 1 THE CONTRACTOR SHALL DISCONNECT AND REMOVE THE EXISTING AREA DRAIN AND PIPING. CAP EXISTING PIPING BELOW THE EXISTING BASEMENT FINISHED FLOOR ELEVATION.
 - 2 THE CONTRACTOR SHALL DISCONNECT AND REMOVE THE EXISTING 6\"/>
 - 3 THE CONTRACTOR SHALL INSTALL NEW MAIN AND MAKE CONNECTION TO THE EXISTING 6\"/>
 - 4 THE CONTRACTOR SHALL DISCONNECT AND REMOVE THE EXISTING OXYGEN MAIN AS NOTED. THE NEW MAIN SHALL BE INSTALLED WITH SLEEVE PRIOR TO DISCONNECTION OF THE EXISTING MAIN. SEE RENOVATION ALL SHUTDOWN TIME SHALL BE KEPT TO MINIMUM AND SHALL BE COORDINATED WITH RESIDENT ENGINEER.

1 PLUMBING FOUNDATION DEMOLITION PLAN
1/8" = 1'-0"

100% CONSTRUCTION DOCUMENTS
FULLY SPRINKLERED

Revisions:	Date:	VA VA NORTHERN INDIANA HEALTH CARE SYSTEM, FORT WAYNE 2121 Lake Ave. Fort Wayne, IN 46805	ARCHITECT/ENGINEERS: AMERICAN STRUCTUREPOINT INC. 7260 SHADELAND STATION INDIANAPOLIS, IN 46256-3957 TEL 317.547.5580 FAX 317.543.0270 www.structurepoint.com	CONSULTANTS: Ross & Baruzzini 8250 Haverstick Road Suite 285 Indianapolis, IN 46240 317.638.8383		Drawing Title PLUMBING FOUNDATION DEMOLITION PLAN Approved: Project Director	Project Title SPS BASEMENT ADDITION VA PROJECT # 610A4-12-400 Location 2121 Lake Ave. Fort Wayne, IN 46805 Date 08/15/2014	Project Number 2010.00629.0005 Building Number 01 Drawing Number PD-100 Checked JDB Drawn BLB	Office of Construction and Facilities Management VA Department of Veterans Affairs
------------	-------	---	--	---	--	---	--	--	--