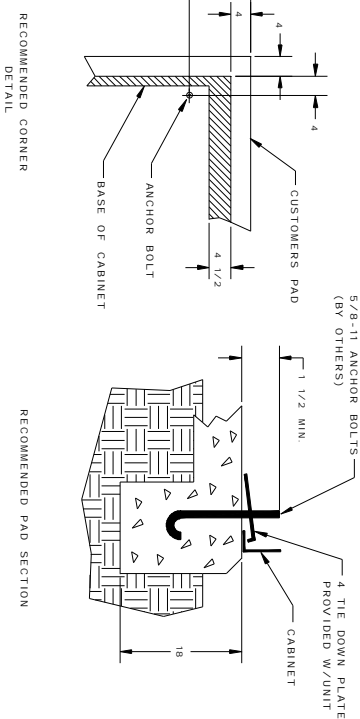
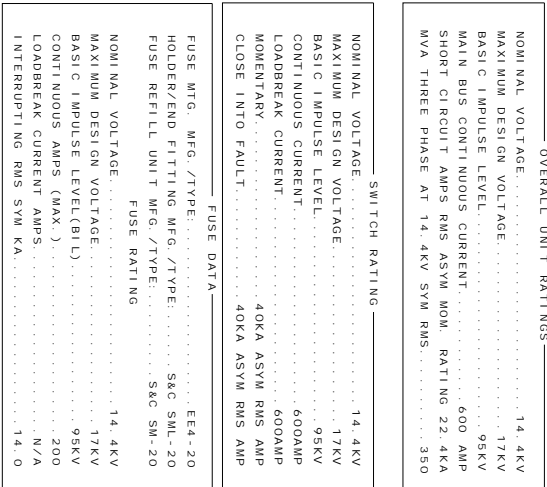



- 1) ENCLOSURE, 11 GA. HRS. PADMOUNT GREEN.
- 2) PADLOCK PROVISIONS.
- 3) REMOVABLE LIFT BRACKETS.
- 4) NEMA 2 HOLE GALVANIZED GROUND PADS.
- 5) NEMA GRADE GPO-3 BARRIERS, SWITCH AND FUSE.
- 6)
- 7) INSTRUCTION POCKET.
- 8) NAMEPLATE AND THREE LINE DIAGRAM.
- 9) PHASE IDENTIFICATION LABELS.
- 10) SWITCH AND FUSE VIEWING WINDOWS.
- 11) PENTA-HEAD SECURITY BOLT.
- 12) 18 GA. GALVANIZED STEEL FLOOR PLATES.
- 13) WARNING SIGNS.
- 14) 600 AMP ALUMINUM BUS BAR (UNLESS OTHERWISE INDICATED).
- 15) EPOXY INSULATORS.
- 16) COPPER GROUND ROD.
- 17) CABLE GUIDES.
- 18) ACTIVE DOOR HAS 3 POINT LATCHING, CONCEALED STAINLESS STEEL HINGES AND PINS, PROVISIONS FOR PADLOCKING, PENTA HEAD SECURITY BOLT AND 105 DEGREE DOOR STOP.
- 19) ROOF IS CROSS-KINKED TO SHED WATER. ANTI-CONDENSATE IS APPLIED TO UNDERSIDE OF ROOF TO REDUCE MOISTURE BUILD-UP.
- 20) PROTECTIVE GASKET FOR BASE OF UNIT IS 1/2 X 1 1/2 CLOSED CELL TYPE.
- 21) APPROXIMATE WEIGHT: 2220 LBS



 <b>FEDERAL PACIFIC COMPANY</b> SWITCHGEAR DIVISION	DATE	060898
	SCALE	1/30
	DRAWN BY	RWP
	CHECK BY	RCN
Electro-Mechanical Corporation - Electrical Group	JOB NO.	37-19
TITLE SCPE - 12 DEADFRONT PADMOUNTED FILENAME 1912A001	DWG NO.	837-1912-.001
SWITCHGEAR 15KV, 95KV BIL, 600AMP SP12101	REV	A