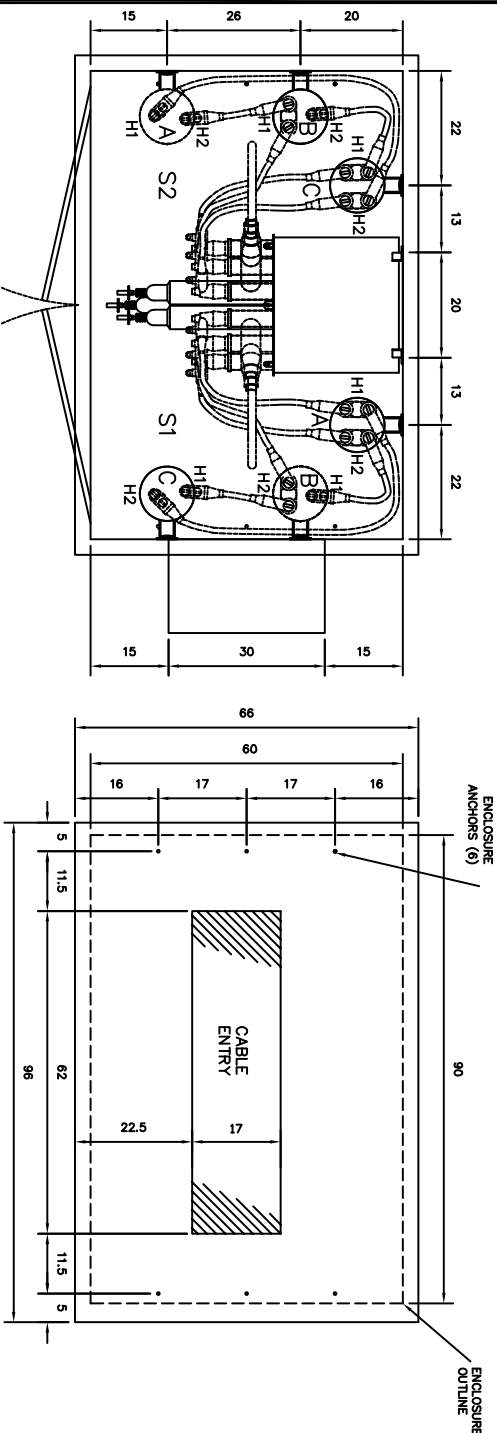


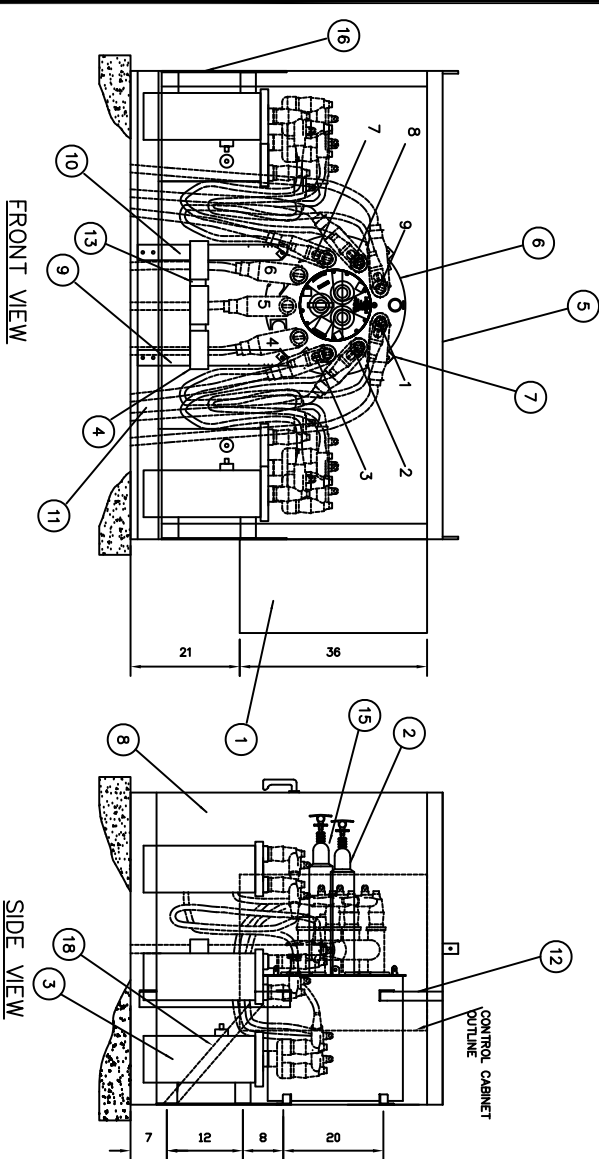
NOTE: AFTER DRILLING HOLES REPAIR ALL BARE METAL.



PLAN VIEW

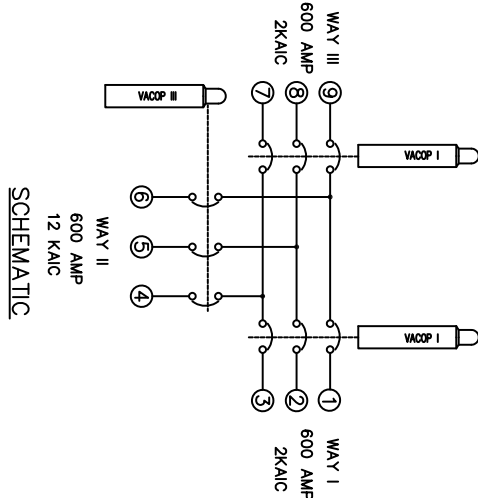
PAD AND ANCHOR DIMENSIONS

ANCHOR BOLTS SHALL BE .625 AND
EXTEND A MINIMUM OF 1.50" ABOVE PAD



FRONT VIEW

SIDE VIEW



SCHEMATIC

Attachment 7_ AT S#1_ VCP1654

NO.		REVISION	ER	DATE	BY	APP
01	#3	WAS A9426-2B	755-1123	2/27/03	JS	

VCP1654		ER NO.	DISTRIBUTION	SIZE	DWG. NO.	REV
P/N		755-1019	35, 48, 54	B	VCP1654	01

SCALE		DRAWN BY	DATE	APPROVAL	TITLE
DNS		JS	10/3/01	DS	VACOP ATS GENERAL ARRANGEMENT

FINISH		MACHINING	CASTING	TOLERANCE UNLESS SPECIFIED
-		1 PL. DEC. 12 PL. DEC. 3 PL. DEC. ANG. DEC. FRACTIONS	-	±

MATERIAL:SEE BOM		QTY	ITEM	PART NO.	UNIT	DESCRIPTION	DRAWING NO.	SIZE
COOPER Power Systems Kearney Operation Foyetteville, Arkansas		2	18	A8322	EA	VACOP AC BRACE	A8322	A
CONFIDENTIAL - PROPERTY OF CPS/KEARNEY		1	17	A9543B	EA	LOT NAME PLATES (NOT SHOWN)	A9543	A
THIS DRAWING MAY NOT BE COPIED OR REPRODUCED IN WHOLE OR PART WITHOUT THE WRITTEN PERMISSION OF AN OFFICER OF THE COMPANY.		6	16	A8313	EA	SUPPORT FOR PT	A8313	A
		1	15	B5043E-15	EA	VACOP 3	B5043	B
		1	14	A8255AA	EA	SYSTEM HARDWARE (NOT SHOWN)	A8255	A
		1	13	A8312	EA	MEMBER FOR MOUNTING CTS	A8312	A
		1	12	A8307	EA	ROOF SUPPORT ASSY	A8307	A
		1	11	A5264E	EA	VACOP MOUNTING ANGLE	A5264	A
		1	10	A8314-G1	EA	LEFT HAND MOUNTING LEG	A9314	A
		1	9	A8314-H1	EA	RIGHT HAND MOUNTING LEG	A9314	A
		30	8	A9277M	FT	CONTROL CABLE	A9277	A
		1	7	A3553	EA	FRONT MOUNTING FEET	A3553	A
		1	6	C1633BP	EA	VACOPAC 33V/P95-666-12T	C1633	C
		1	5	C1645	EA	DH-4 STEEL ENCLOSURE (PADMOUNT GREEN)	C1645	C
		3	4	A9301C	EA	CURRENT XFMR	A9301	A
		6	3	A9426-8A	EA	VOLTAGE XFMR 12.470:240/120V	A9426-8	A
		2	2	B5199-15	EA	VACOP 1 OPERATOR	B5199	B
		1	1	VCP1654CC	EA	CONTROL CABINET W/ INNER DOOR & PANEL	VCP1654CC	B