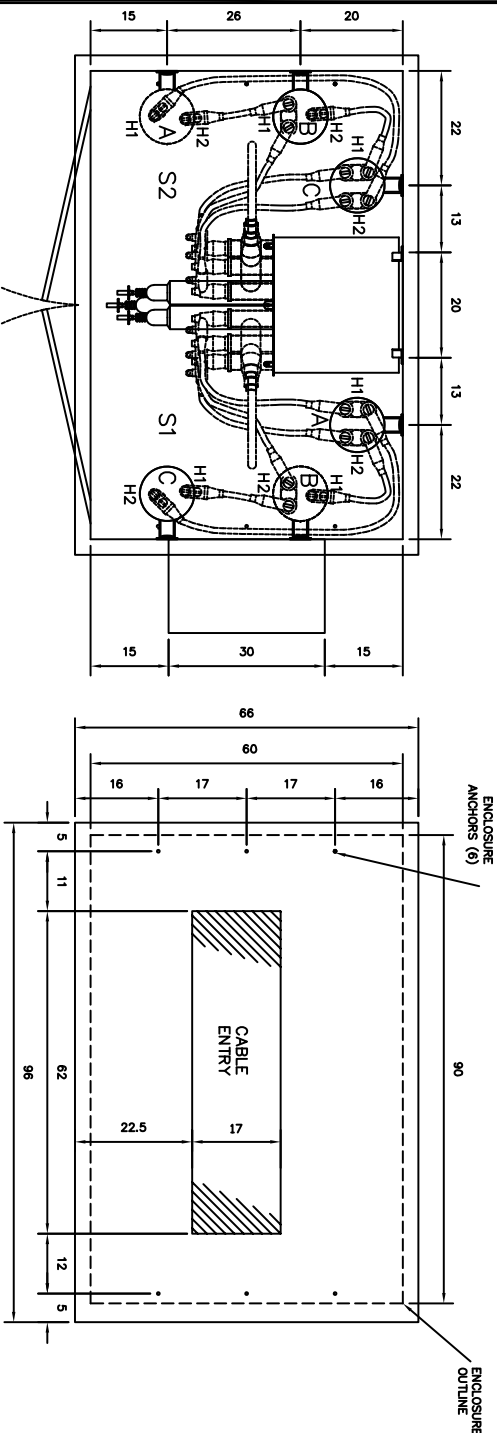
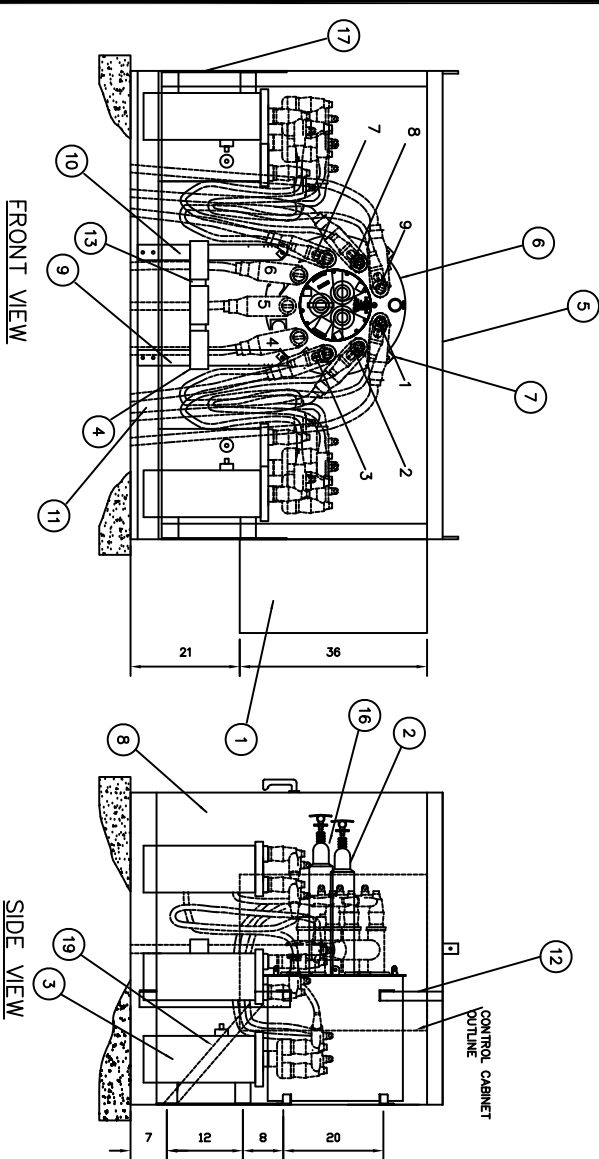


NOTE: AFTER DRILLING HOLES REPAIR ALL BARE METAL.

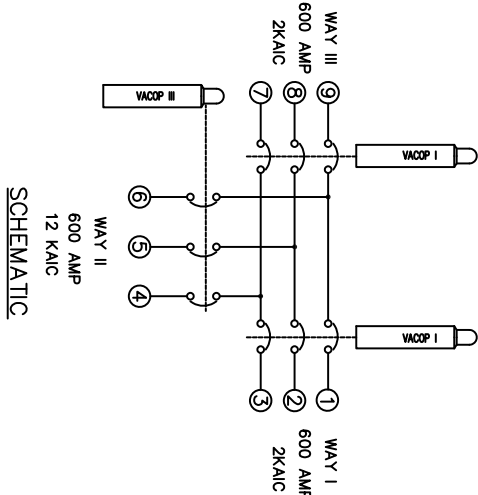


PAD AND ANCHOR DIMENSIONS

ANCHOR BOLTS SHALL BE .625" AND  
EXTEND A MINIMUM OF 1.50" ABOVE PAD



NO.	REVISION	ER	DATE	BY	APP
01	IT 3 WAS A9425-2B IT 5 WAS A4694D	755-1023	10/25/01	MLH	



Attachment 9\_TS #4\_VCP1532

2	19	A8322	EA	VACPAC BRACE	A8322	A
1	18	A9543B	EA	LOT NAME PLATES (NOT SHOWN)	A9543	A
6	17	A8313	EA	SUPPORT FOR PT	A8313	A
1	16	B5043E-15	EA	VACPAC 3	B5043	B
1	15	VCP1532RC	EA	REMOTE CABINET (NOT SHOWN)	VCP1532RC	B
1	14	A8255AA	EA	SYSTEM HARDWARE (NOT SHOWN)	A8255	A
1	13	A8312	EA	MEMBER FOR MOUNTING CTS	A8312	A
1	12	A8307	EA	ROOF SUPPORT ASSY	A8307	A
1	11	A5264E	EA	VACPAC MOUNTING ANGLE	A5264	A
1	10	A8314-G1	EA	LEFT HAND MOUNTING LEG	A9314	A
1	9	A8314-H1	EA	RIGHT HAND MOUNTING LEG	A9314	A
30	8	A9277M	FT	CONTROL CABLE	A9277	A
1	7	A3553	EA	FRONT MOUNTING FEET	A3553	A
1	6	C1633BP	EA	VACPAC 33VP95-666-12T	C1633	C
1	5	C1645	EA	DH-4 STEEL ENCLOSURE (PADMOUNT GREEN)	C1645	C
3	4	A9301C	EA	CURRENT XTMR	A9301	A
6	3	A9426-2B	EA	VOLTAGE XTMR 12.470:240/120V	A9426-2	A
2	2	B5199-15	EA	VACPAC 1 OPERATOR	B5199	B
1	1	VCP1532CC	EA	CONTROL CABINET W/ INNER DOOR & PANEL	VCP1532CC	B
QTY	ITEM	PART NO.	UNIT	DESCRIPTION	DRAWING NO.	SIZE
THIS DRAWING MAY NOT BE COPIED OR REPRODUCED IN WHOLE OR PART WITHOUT THE WRITTEN PERMISSION OF AN OFFICER OF THE COMPANY.						
				TOLERANCE UNLESS SPECIFIED ±		
				1 PL. DEC. 2 PL. DEC. 3 PL. DEC. ANG. DEG. FRACTIONS		
				MACHINING - - - - -		
				CASTING - - - - -		
				FINISH: - - - - -		
				MATERIAL:SEE BOM		
				TITLE		
				VACPAC		
				GENERAL ARRANGEMENT		
				VCP1532		
				REV 01		
				VCP1532		
				REV 01		
				REV 01		
				REV 01		
				REV 01		
				REV 01		
				REV 01		
				REV 01		
				REV 01		
				REV 01		
				REV 01		
				REV 01		
				REV 01		
				REV 01		
				REV 01		
				REV 01		
				REV 01		
				REV 01		
				REV 01		
				REV 01		
				REV 01		
				REV 01		
				REV 01		
				REV 01		
				REV 01		
				REV 01		
				REV 01		
				REV 01		
				REV 01		
				REV 01		
				REV 01		
				REV 01		
				REV 01		
				REV 01		
				REV 01		
				REV 01		
				REV 01		
				REV 01		
				REV 01		
				REV 01		
				REV 01		
				REV 01		
				REV 01		
				REV 01		
				REV 01		
				REV 01		
				REV 01		
				REV 01		
				REV 01		
				REV 01		
				REV 01		
				REV 01		
				REV 01		
				REV 01		
				REV 01		
				REV 01		
				REV 01		
				REV 01		
				REV 01		
				REV 01		
				REV 01		
				REV 01		
				REV 01		
				REV 01		
				REV 01		
				REV 01		
				REV 01		
				REV 01		
				REV 01		
				REV 01		
				REV 01		
				REV 01		
				REV 01		
				REV 01		
				REV 01		
				REV 01		
				REV 01		
				REV 01		
				REV 01		
				REV 01		
				REV 01		
				REV 01		
				REV 01		
				REV 01		
				REV 01		
				REV 01		
				REV 01		
				REV 01		
				REV 01		
				REV 01		
				REV 01		
				REV 01		
				REV 01		
				REV 01		
				REV 01		
				REV 01		
				REV 01		
				REV 01		
				REV 01		
				REV 01		
				REV 01		
				REV 01		
				REV 01		
				REV 01		
				REV 01		
				REV 01		
				REV 01		
				REV 01		
				REV 01		
				REV 01		
				REV 01		
				REV 01		
				REV 01		
				REV 01		
				REV 01		
				REV 01		
				REV 01		
				REV 01		
				REV 01		
				REV 01		
				REV 01		
				REV 01		
				REV 01		
				REV 01		
				REV 01		
				REV 01		
				REV 01		
				REV 01		
				REV 01		
				REV 01		
				REV 01		
				REV 01		
				REV 01		
				REV 01		
				REV 01		
				REV 01		
				REV 01		
				REV 01		
				REV 01		
				REV 01		
				REV 01		
				REV 01		
				REV 01		
				REV 01		
				REV 01		
				REV 01		
				REV 01		
				REV 01		
				REV 01		
				REV 01		
				REV 01		
				REV 01		
				REV 01		
				REV 01		
				REV 01		
				REV 01		
				REV 01		
				REV 01		
				REV 01		
				REV 01		
				REV 01		