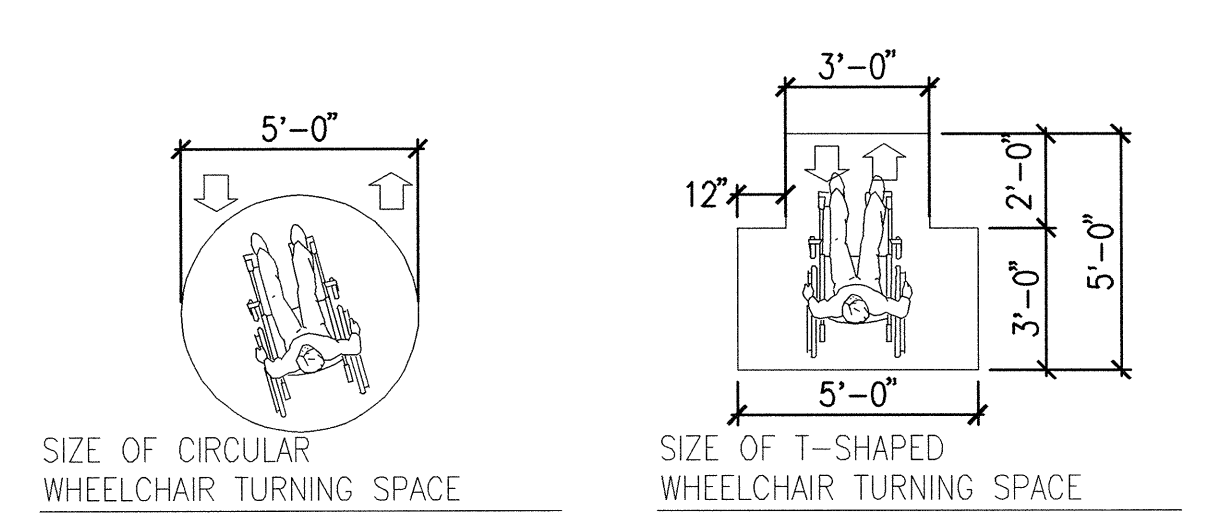
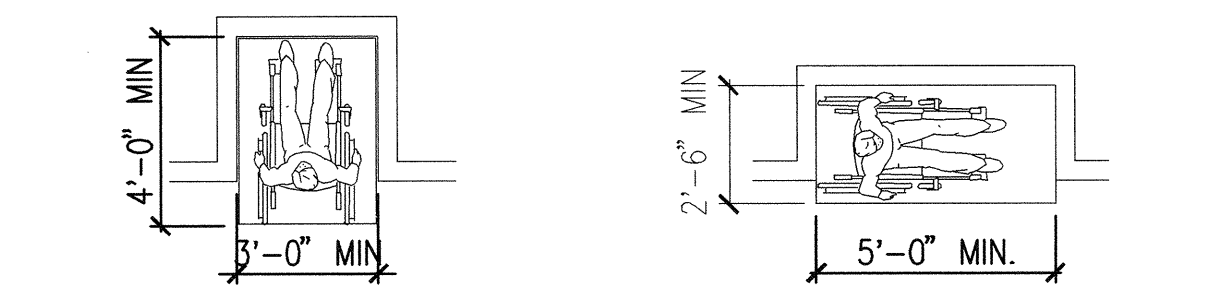
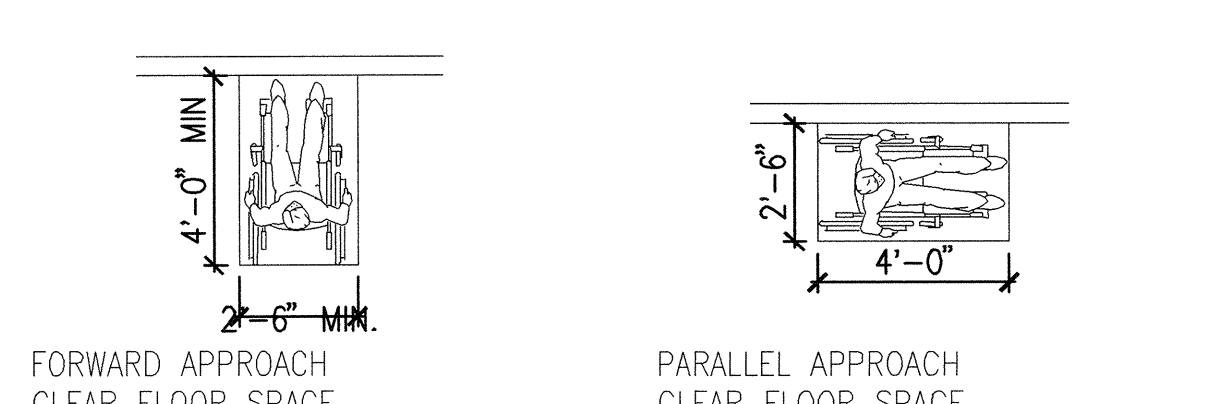


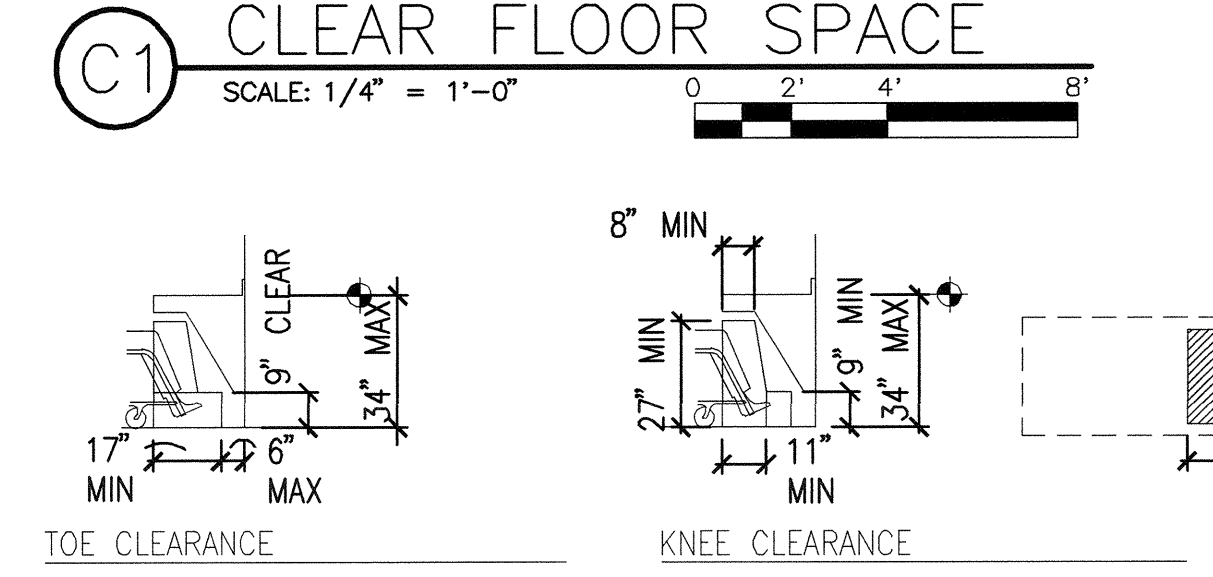
three eighths inch = one foot
one and one half inch = one foot
one quarter inch = one foot
one eighth inch = one foot
one eighth inch = one foot



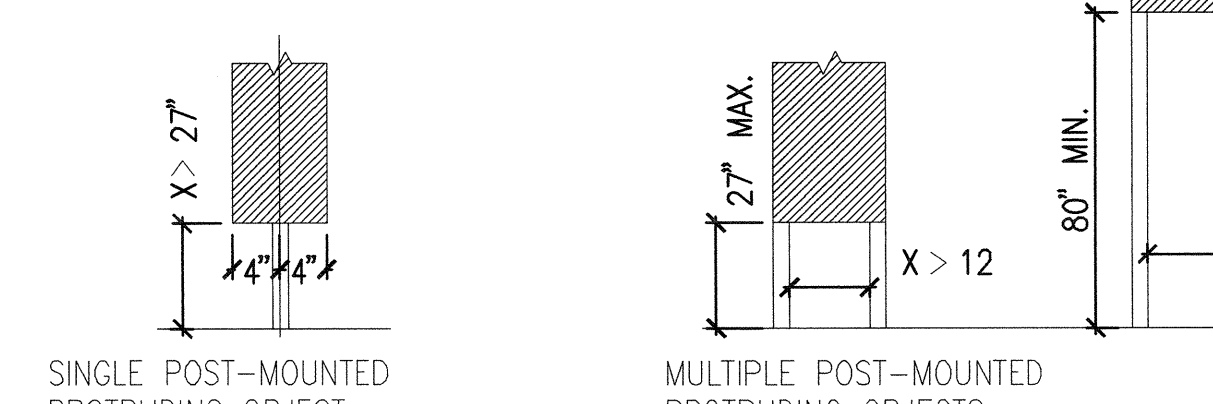
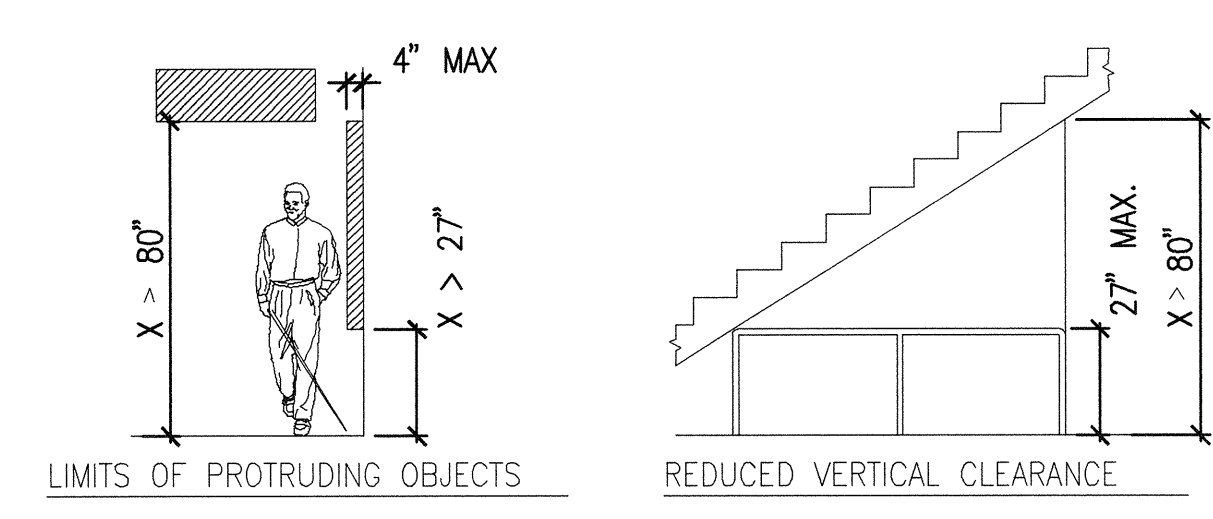
A1 WHEELCHAIR TURNING SPACE
SCALE: 1/4" = 1'-0"



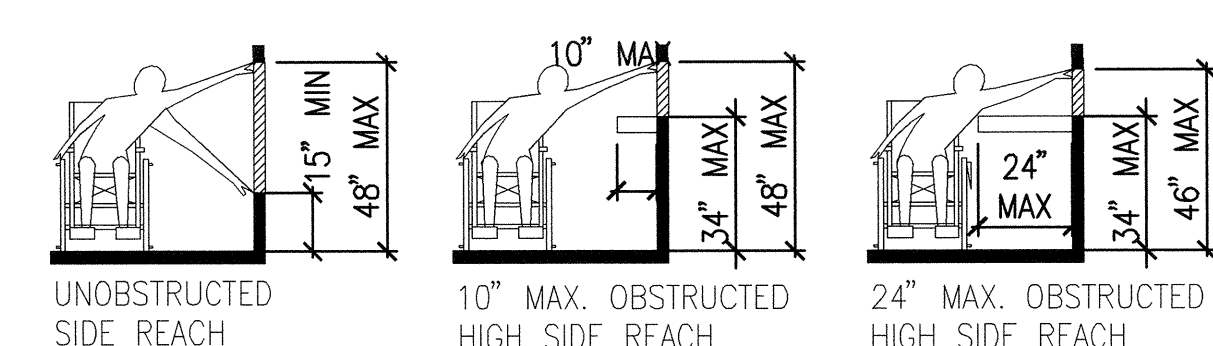
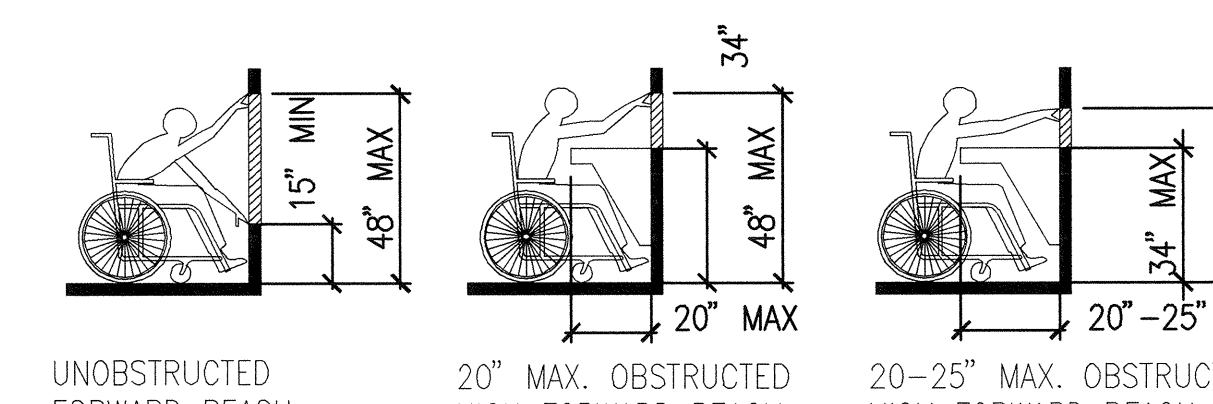
C1 CLEAR FLOOR SPACE
SCALE: 1/4" = 1'-0"



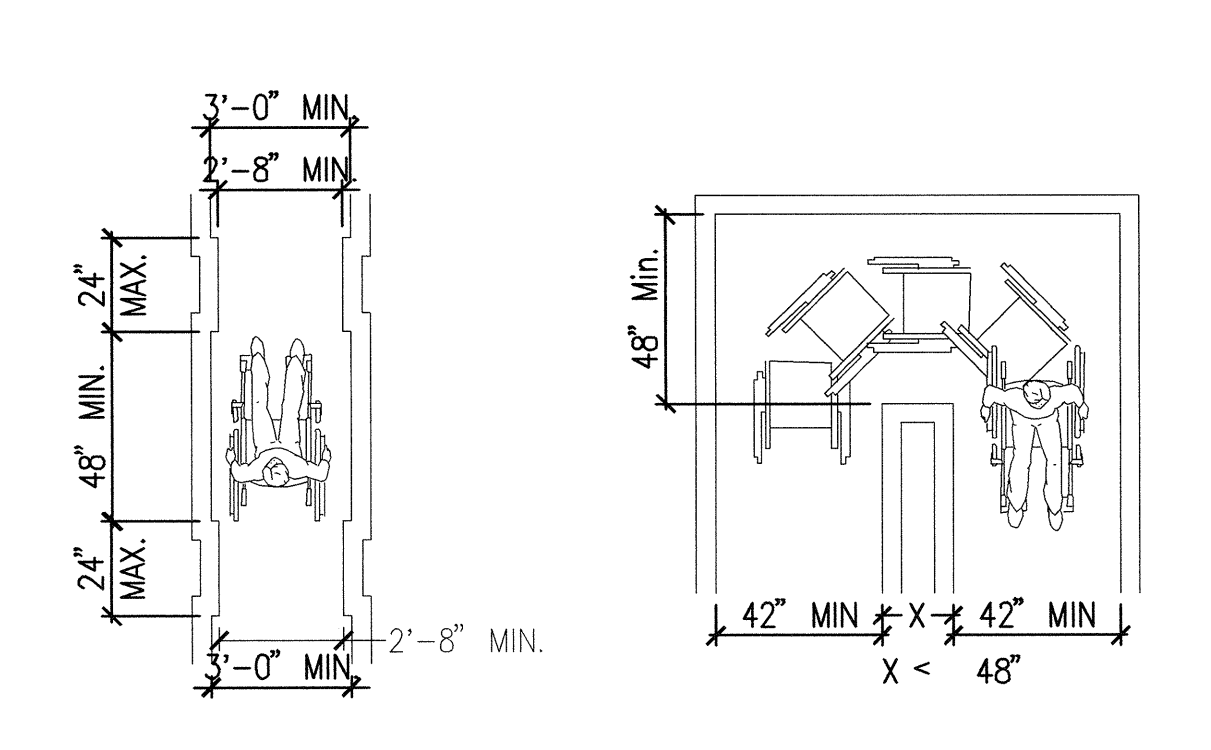
D1 KNEE AND TOE CLEARANCES
SCALE: 1/4" = 1'-0"



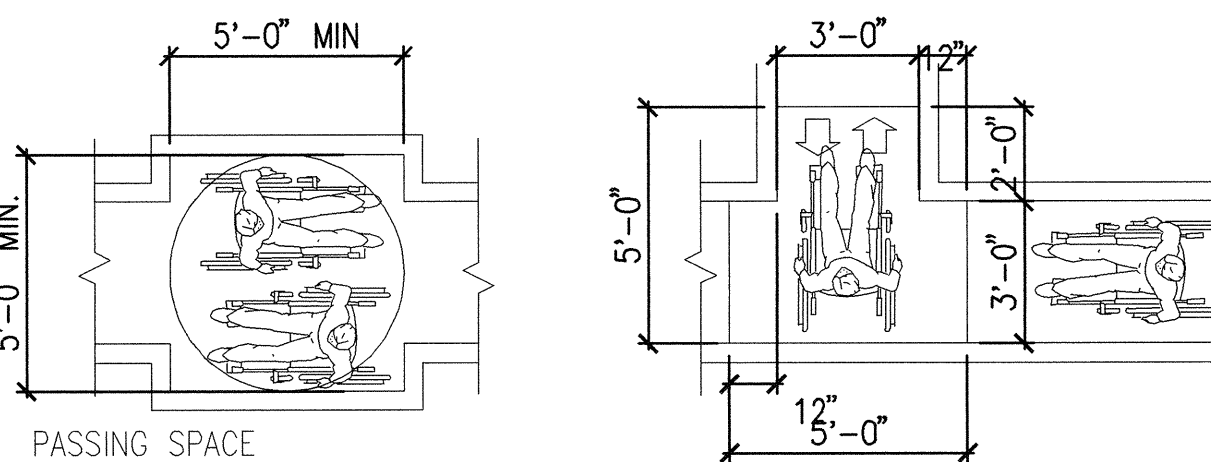
E1 PROTRUDING OBJECTS
SCALE: 1/4" = 1'-0"



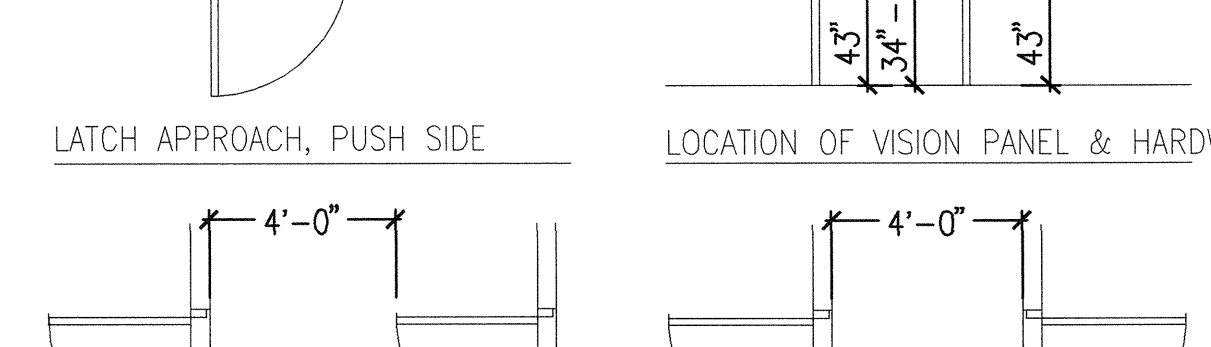
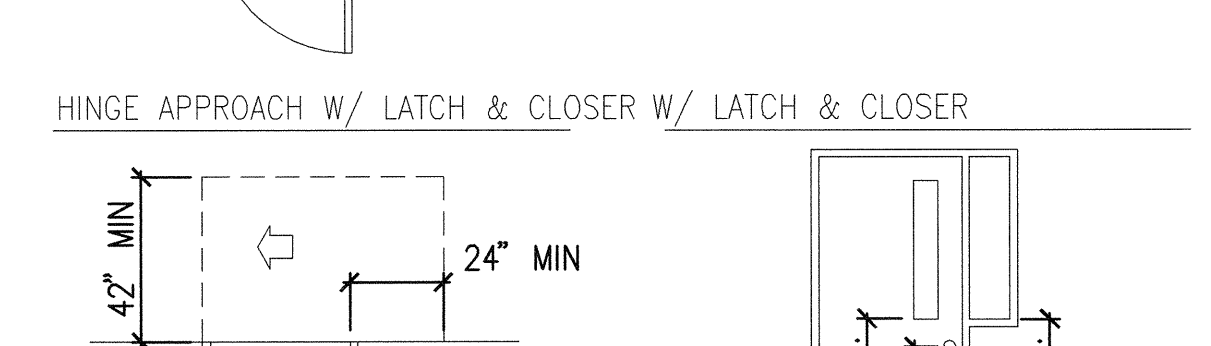
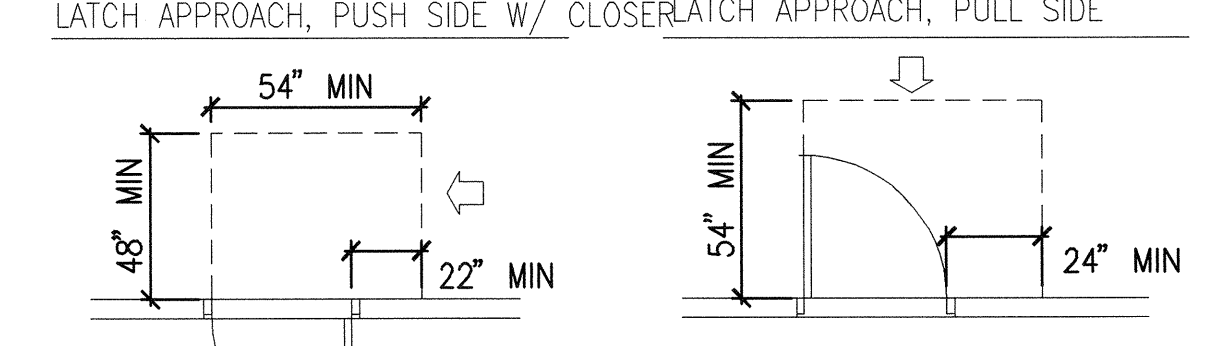
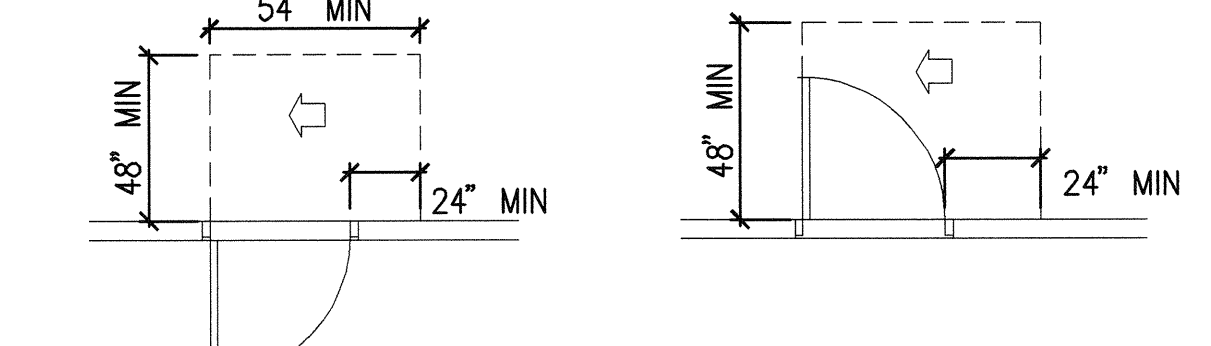
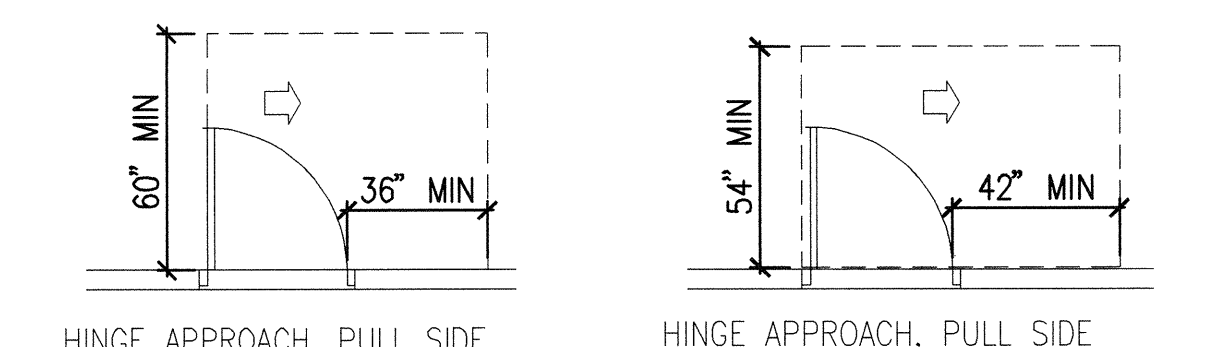
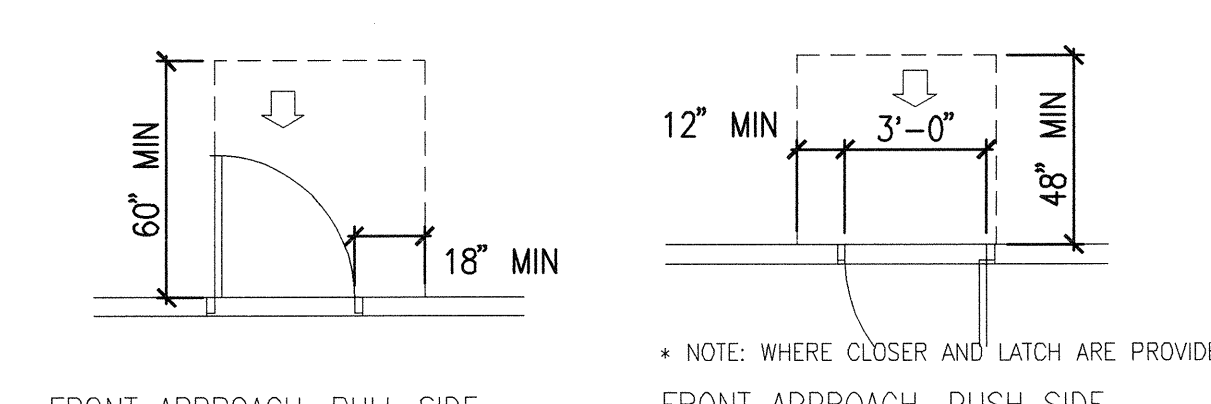
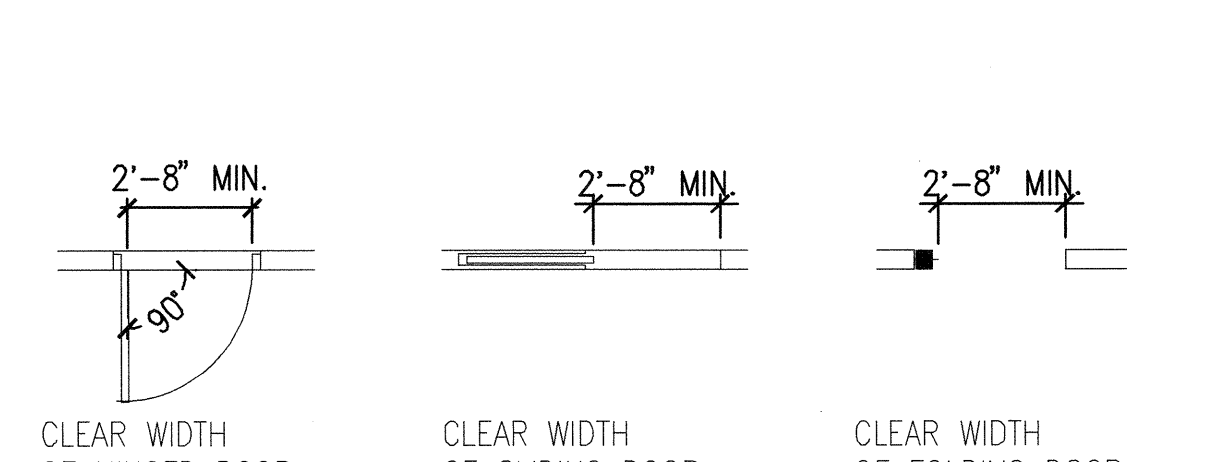
F1 REACH RANGES
SCALE: 1/4" = 1'-0"



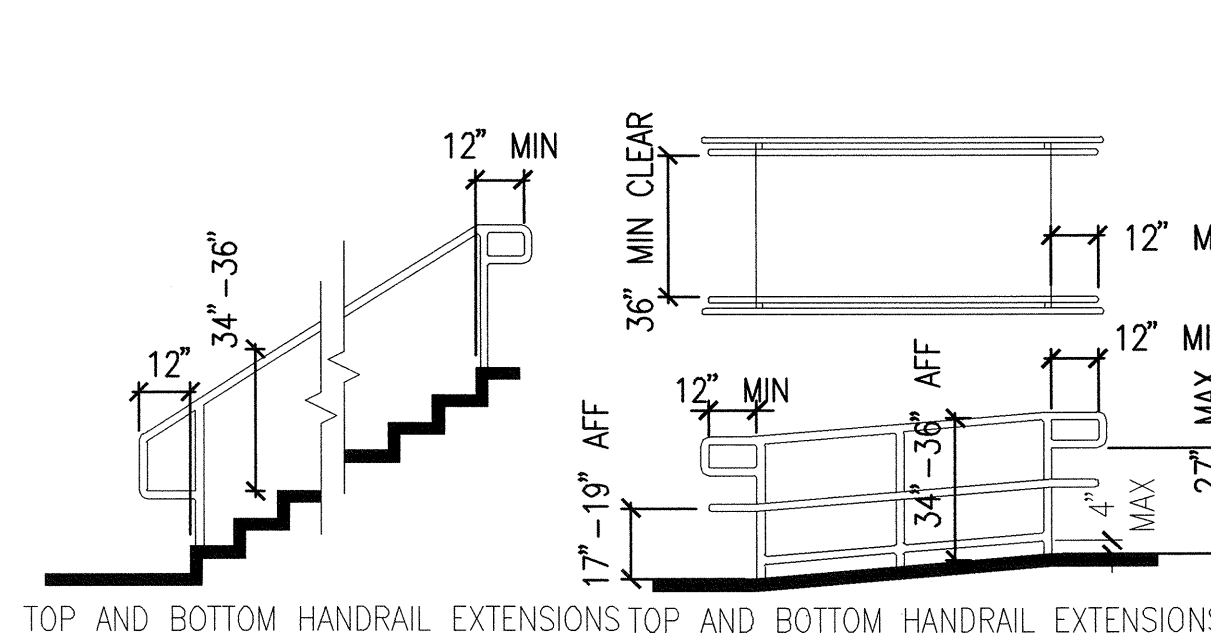
B3 ACCESSIBLE ROUTES
SCALE: 1/4" = 1'-0"



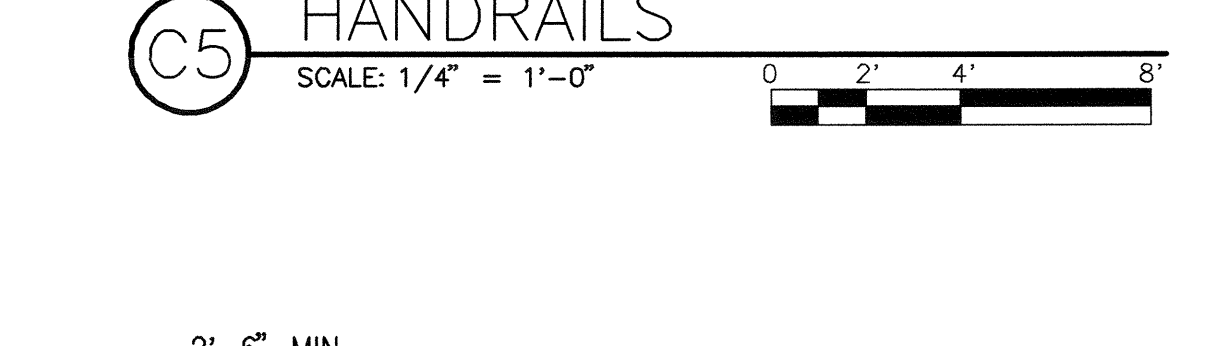
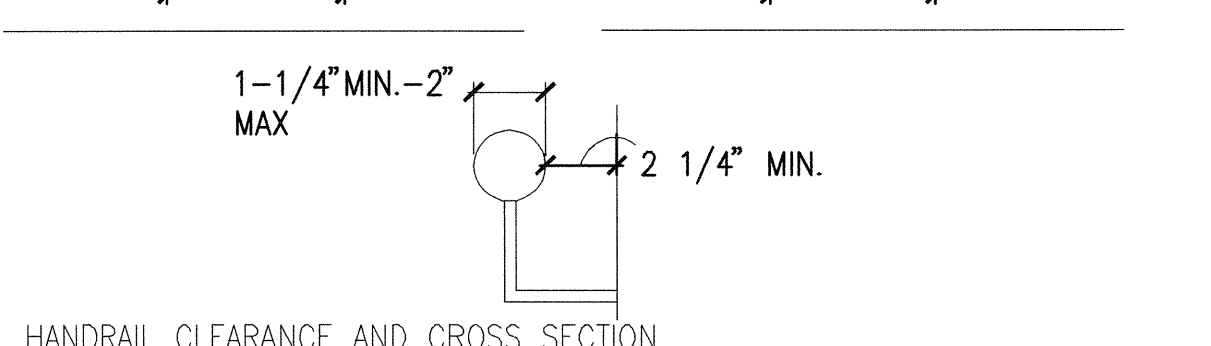
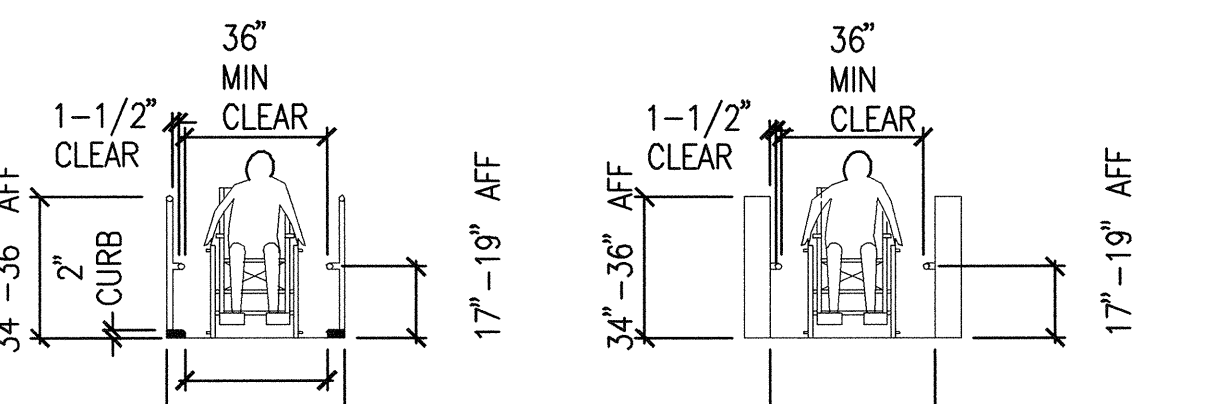
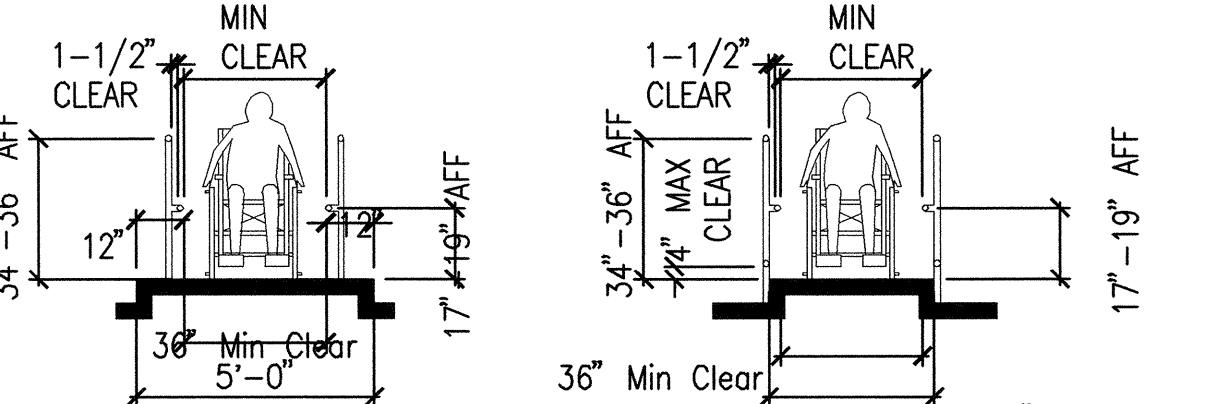
C5 HANDRAILS
SCALE: 1/4" = 1'-0"



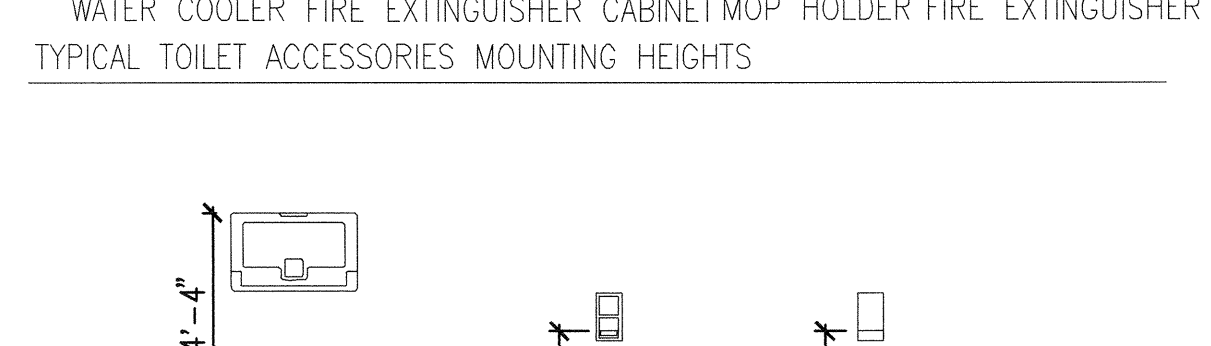
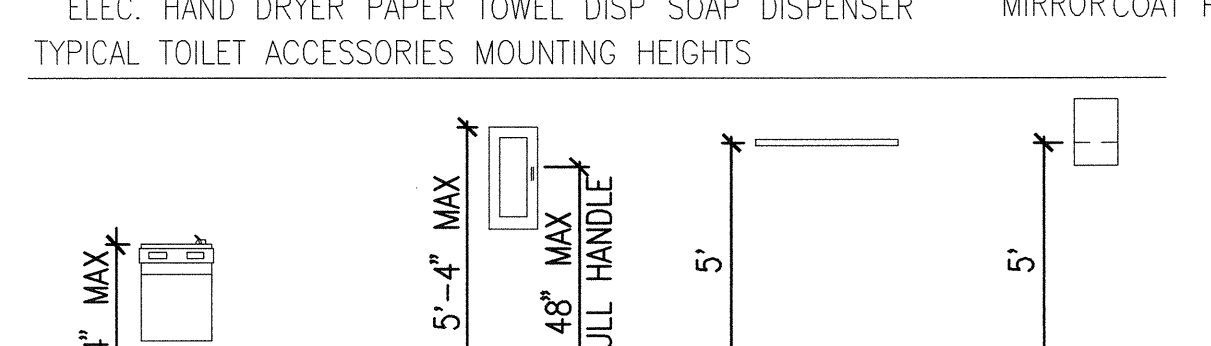
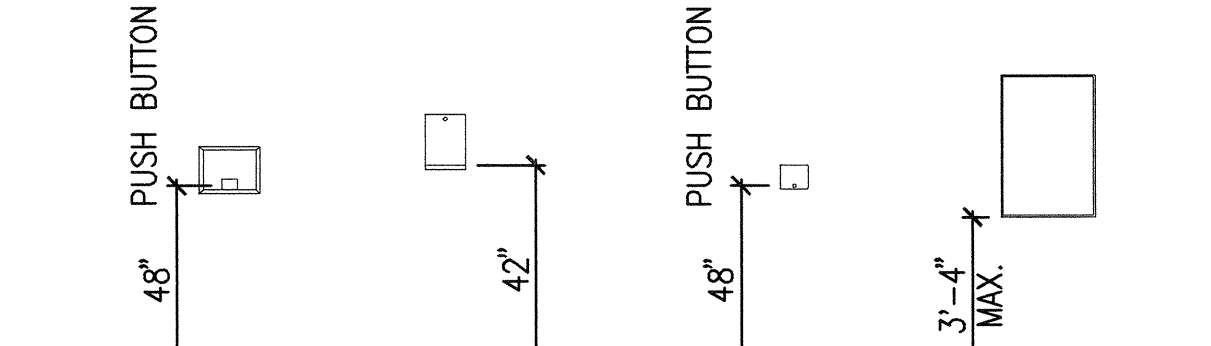
F3 DOORS AND DOORWAYS
SCALE: 1/4" = 1'-0"



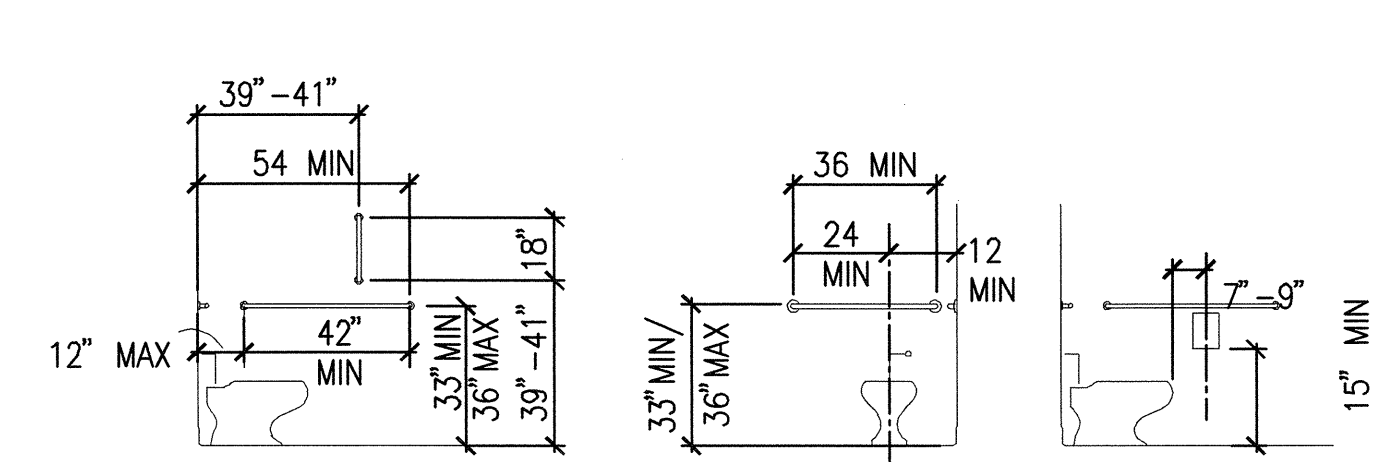
C5 HANDRAILS
SCALE: 1/4" = 1'-0"



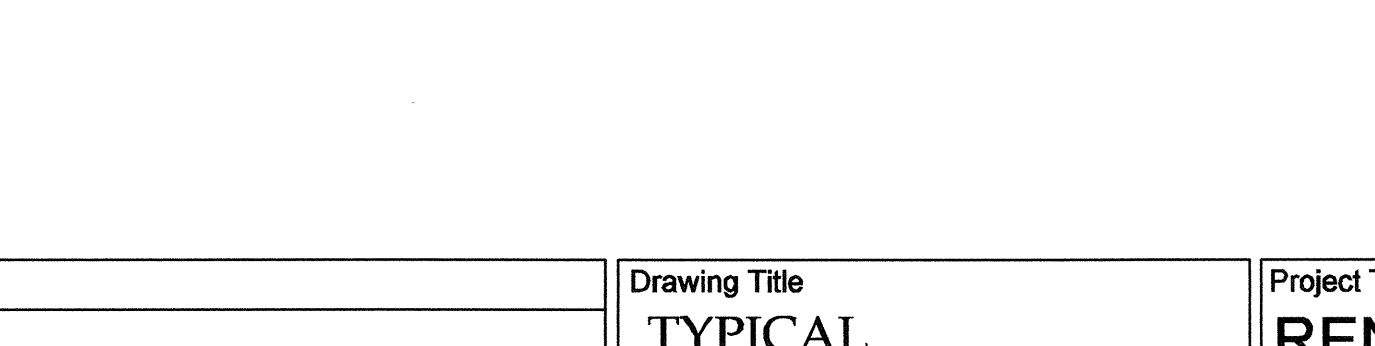
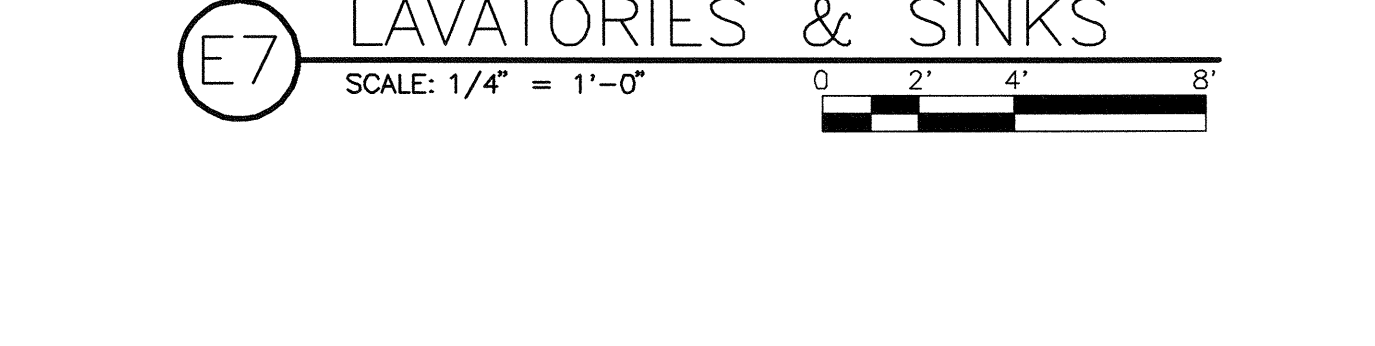
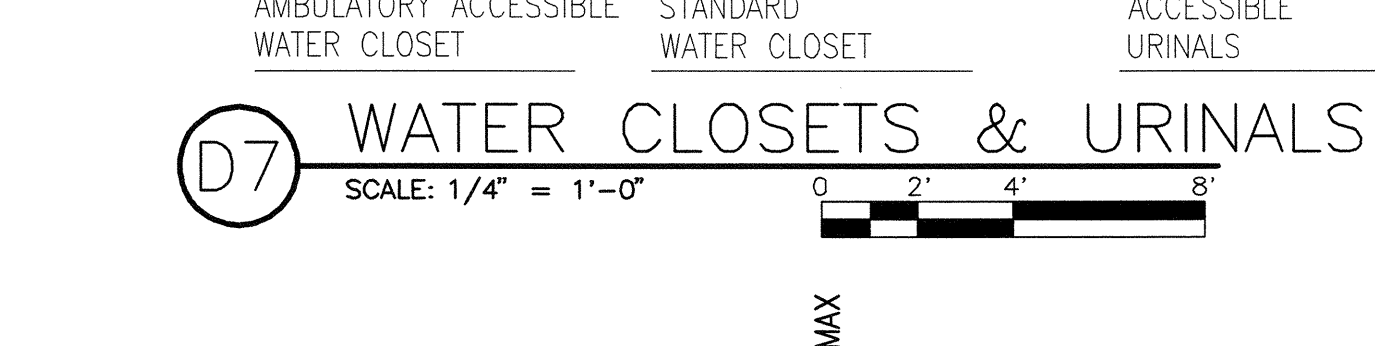
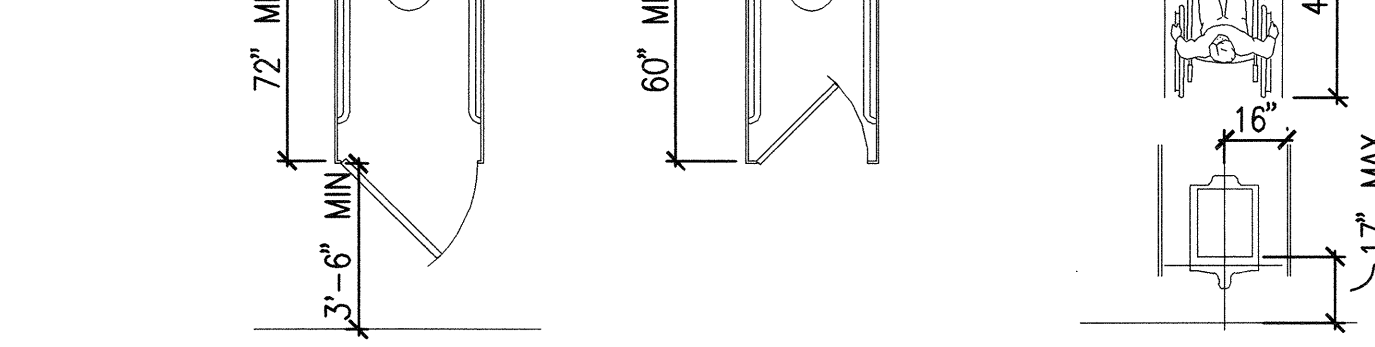
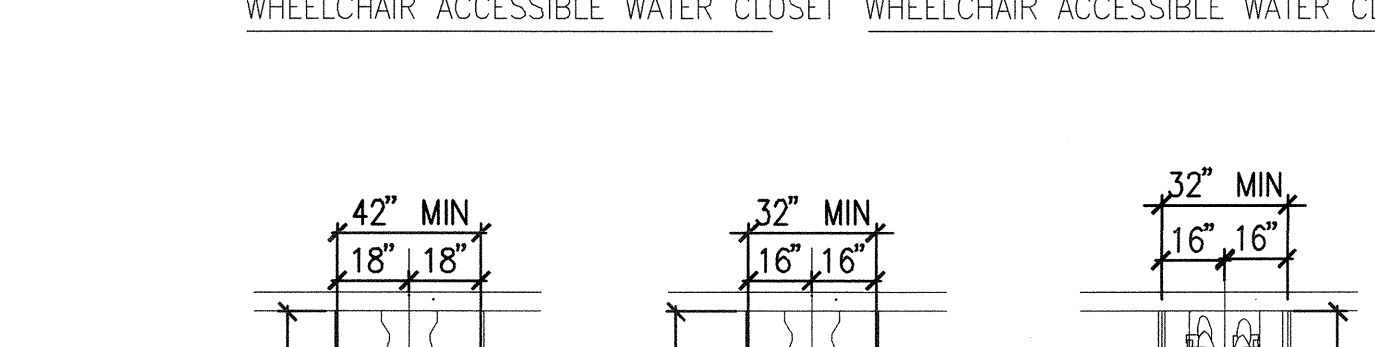
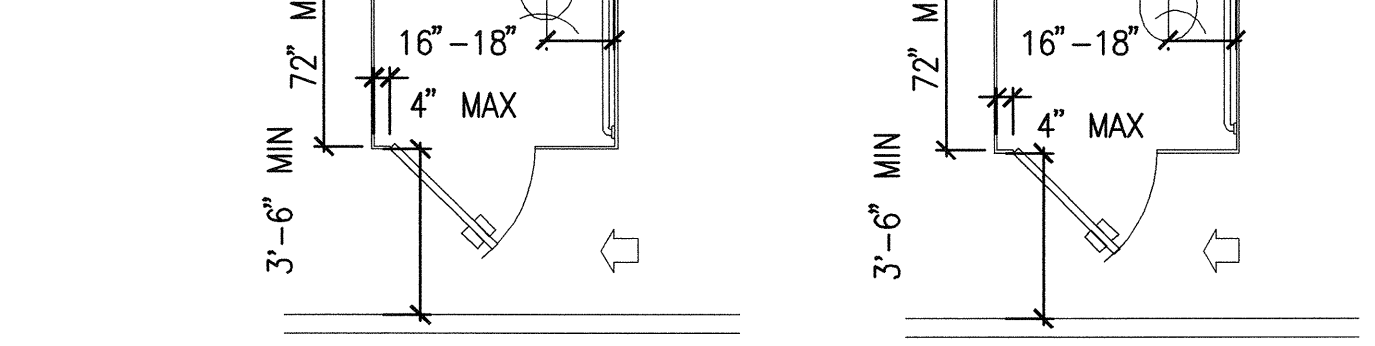
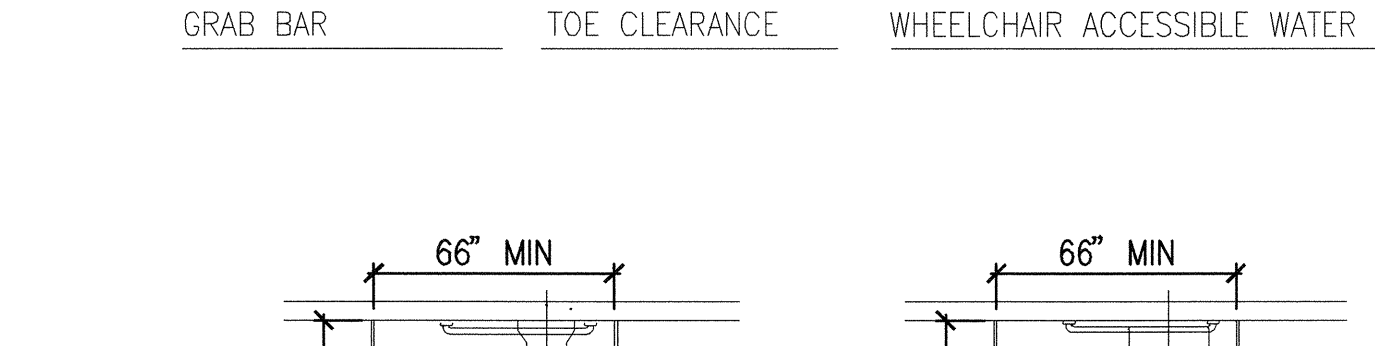
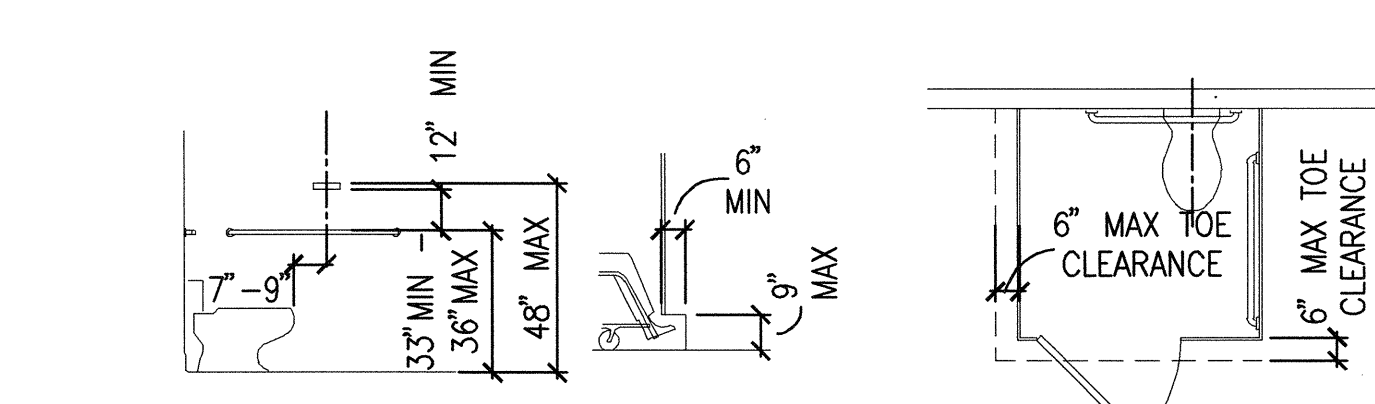
D5 DRINKING FOUNTAINS
SCALE: 1/4" = 1'-0"



F5 ACCESSORIES
SCALE: 1/4" = 1'-0"



D7 WATER CLOSETS & URINALS
SCALE: 1/4" = 1'-0"



E7 LAVATORIES & SINKS
SCALE: 1/4" = 1'-0"

- GENERAL NOTES**
- A. ALL ACCESSIBILITY DETAILS COMPLY WITH FEDERAL ABAS AND THE VA BARRIER FREE DESIGN GUIDE.
 - B. DETAILS ARE PROVIDED FOR REFERENCE ONLY. THESE DETAILS SHOW MINIMUM REQUIREMENTS. REFER TO ARCHITECTURAL DRAWINGS FOR ACTUAL DIMENSIONS. WHERE NOTHING IS INDICATED ON OTHER DRAWINGS, G.C. IS TO REFER TO THESE DETAILS.
 - C. ADDITIONAL REQUIREMENTS ARE SHOWN ON OTHER SHEETS IN CONSTRUCTION DOCUMENTS. THIS SHEET DOES NOT REPRESENT ALL REQUIREMENTS.
 - D. NOTIFY ARCHITECT OF CONFLICTS BETWEEN THIS SHEET AND OTHER SHEETS.
 - E. REINFORCING SHALL BE PROVIDED AND INSTALLED AT ALL WALL MOUNTED EQUIPMENT PER VA STANDARD DETAIL F3/AE512.

REVISION NO.	REVISION DESCRIPTION	Department of Veterans Affairs Veterans Healthcare System of the Ozarks 1100 North College Avenue Fayetteville, AR 72703	Architect/Engineer Address HARRELL DESIGN GROUP, P.C. 8016 TOWER POINT DRIVE CHARLOTTE, NC 28227 P 704.814.1320 F 704.321.0833 WWW.HARRELLDC.COM COPYRIGHT © 2014 HARRELL DESIGN GROUP, PC HDS PROJECT # 14001	APPROVALS: CHIEF OF ENGINEERING	Drawing Title TYPICAL ACCESSIBILITY DETAILS	Project Title RENOVATE 3B CLINIC FOR STEP-DOWN, B1	Date 1/8/2015	Project Number 564-14-102	DRAWING No. GI003	Veterans Affairs
1					FULLY SPRINKLERED	Drawn DEB	Building Number 1	AutoCAD File Name		
2					100% FINAL CONSTRUCTION DRAWINGS	Checked DEB	Reviewed JC	Const. Contract No.		