

GENERAL NOTES

- CEILINGS ARE AT 8'-0" UON.
- REFER TO MEP SHEETS FOR DISCIPLINE SYMBOL LEGENDS.
- ADJUST ELEVATION OF EXISTING CABLE TRAY AS REQUIRED TO ACCOMMODATE NEW CEILING HEIGHT AND CONFIGURATION.

SHEET KEYNOTES (#)

- GWB BULKHEAD CREATED FROM DEMOLISHED PARTITION. BTM. FLUSH WITH ADJACENT CEILINGS.
- EXISTING GWB BULKHEAD TO REMAIN. ADJUST BOTTOM ELEVATION TO 8'-0". FILL IN GAPS WHERE EXISTING PARTITIONS REMOVED.
- NEW GWB BULKHEAD TO MATCH EXISTING ADJACENT.
- REMOVE EXISTING GRID AND TILE AS REQUIRED TO ACCOMPLISH ABOVE CEILING WORK AS INDICATED ON MEP DRAWINGS. REINSTALL EXISTING GRID AND TILE (NEW GRID AND TILE IN AREA INDICATED).
- EXISTING EXIT SIGN TO BE REMOVED AND REINSTALLED.
- CEILING MOUNTED PSYCHOLOGICAL MONITOR BRACKET & MONITORS (VV)

RCP PLAN SYMBOLS

- | | |
|--|---|
| | SURFACE, RECESSED, OR WALL MOUNTED LIGHTING - NORMAL BRANCH CIRCUIT |
| | SURFACE, RECESSED, OR WALL MOUNTED LIGHTING FIXTURE - LIFE SAFETY BRANCH |
| | SURFACE, RECESSED, OR WALL MOUNTED LIGHTING FIXTURE - CRITICAL BRANCH CIRCUIT |
| | CEILING MOUNTED EXIT SIGN |
| | CEILING MOUNTED OCCUPANCY SENSOR |
| | NURSE CALL SYSTEM CEILING MOUNTED DOME LIGHT |
| | FIRE ALARM CEILING SPEAKER |
| | CEILING SPEAKER |
| | NURSE CALL CEILING MOUNTED ZONE LIGHT |
| | SUPPLY DIFFUSER |
| | RETURN/TRANSFER GRILLE |
| | EXHAUST GRILLE |
| | RADIANT CEILING PANEL |
| | SUSPENDED ACOUSTICAL CEILING |
| | SUSPENDED GWB |
| | 24"X24" ACCESS PANEL |
| | 18"X18" ACCESS PANEL |

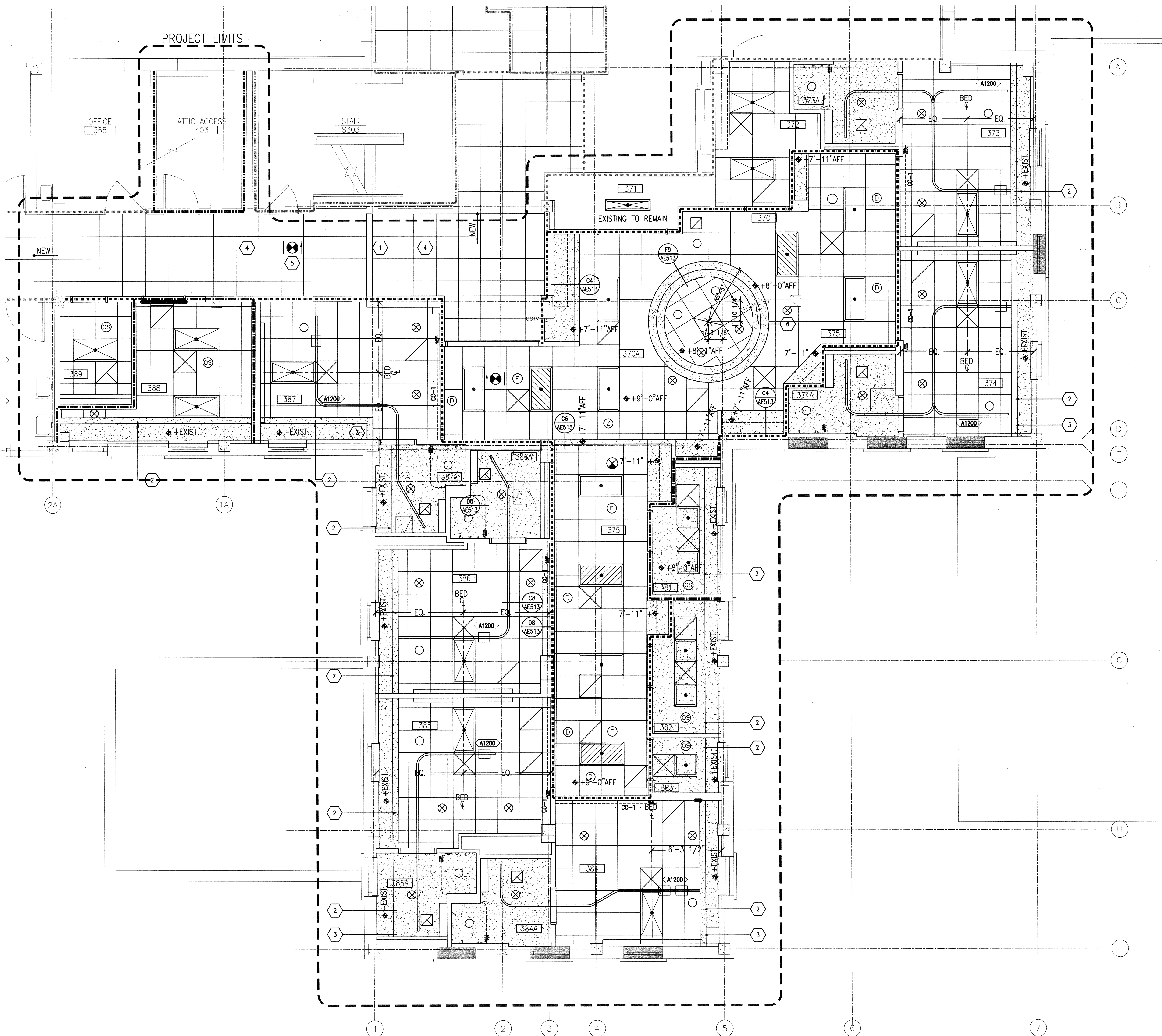
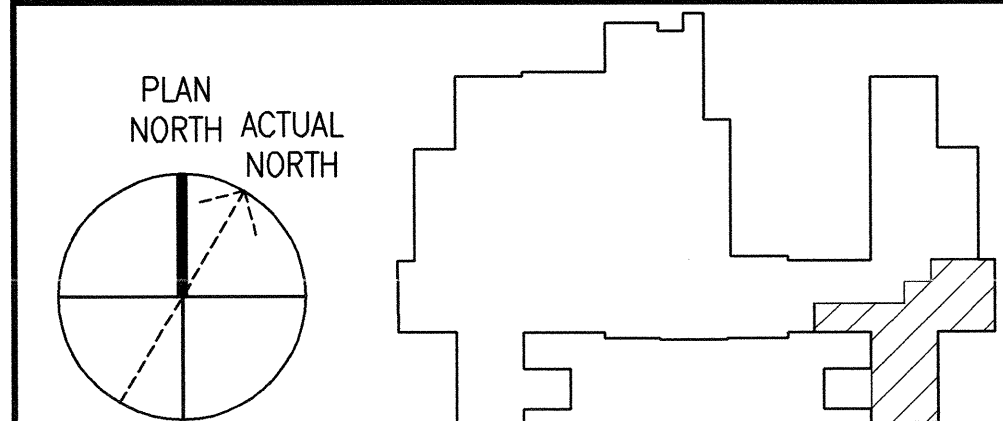
COORDINATION DRAWINGS

SEE COVER SHEET FOR COORDINATION NOTES.

SYMBOLS LEGEND

- | | |
|--|--|
| | EXISTING WALL, DOOR, WINDOW, MILLWORK, FIXTURE OR OTHER FIXTURE OR ASSEMBLY TO BE REMOVED. |
| | EXISTING WALL, DOOR, WINDOW, MILLWORK, FIXTURE OR OTHER FIXTURE OR ASSEMBLY TO REMAIN. |
| | NEW WALL (TYPE C3 UON) |
| | 1-HOUR RATED FIRE BARRIER (TYPE C3R UON) |
| | SMOKE PARTITION (TYPE C3S UON) |
| | PROJECT LIMITS |
| | NO PIPING OR DUCTWORK SHALL BE ROUTED THROUGH ELECTRICAL AND/OR DATA ROOMS. |
| | EXISTING CONCRETE COLUMN |

KEYPLAN

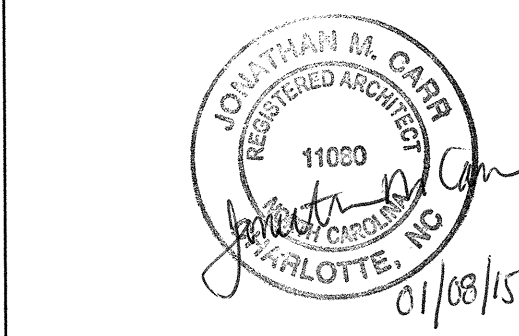


F3 THIRD FLOOR REFLECTED CEILING PLAN
SCALE: 1/4" = 1'-0"

REVISION NO.	REVISION DESCRIPTION	By	Date



Department of Veterans Affairs
Veterans Healthcare System of
the Ozarks
1100 North College Avenue
Fayetteville, AR 72703



Architect/Engineer Address
HARRELL
DESIGN GROUP, P.C.
8016 TOWER POINT DRIVE
CHARLOTTE, NC 28227
P 704.814.1325
F 704.323.0833
www.harrellinc.com
COPYRIGHT © 2014 HARRELL DESIGN GROUP, PC
HDC PROJECT # 14001

APPROVALS:
CHIEF OF ENGINEERING

Drawing Title
THIRD FLOOR REFLECTED CEILING PLAN
FULLY SPRINKLERED
100% FINAL CONSTRUCTION DRAWINGS

Project Title
RENOVATE 3B CLINIC FOR STEP-DOWN, B1
Drawn DEB
Building Number 1
AutoCAD File Name
Checked DEB
Reviewed JC
Const. Contract No.

Date
1/8/2015
Project Number
564-14-102
Drawing No.
AE104

