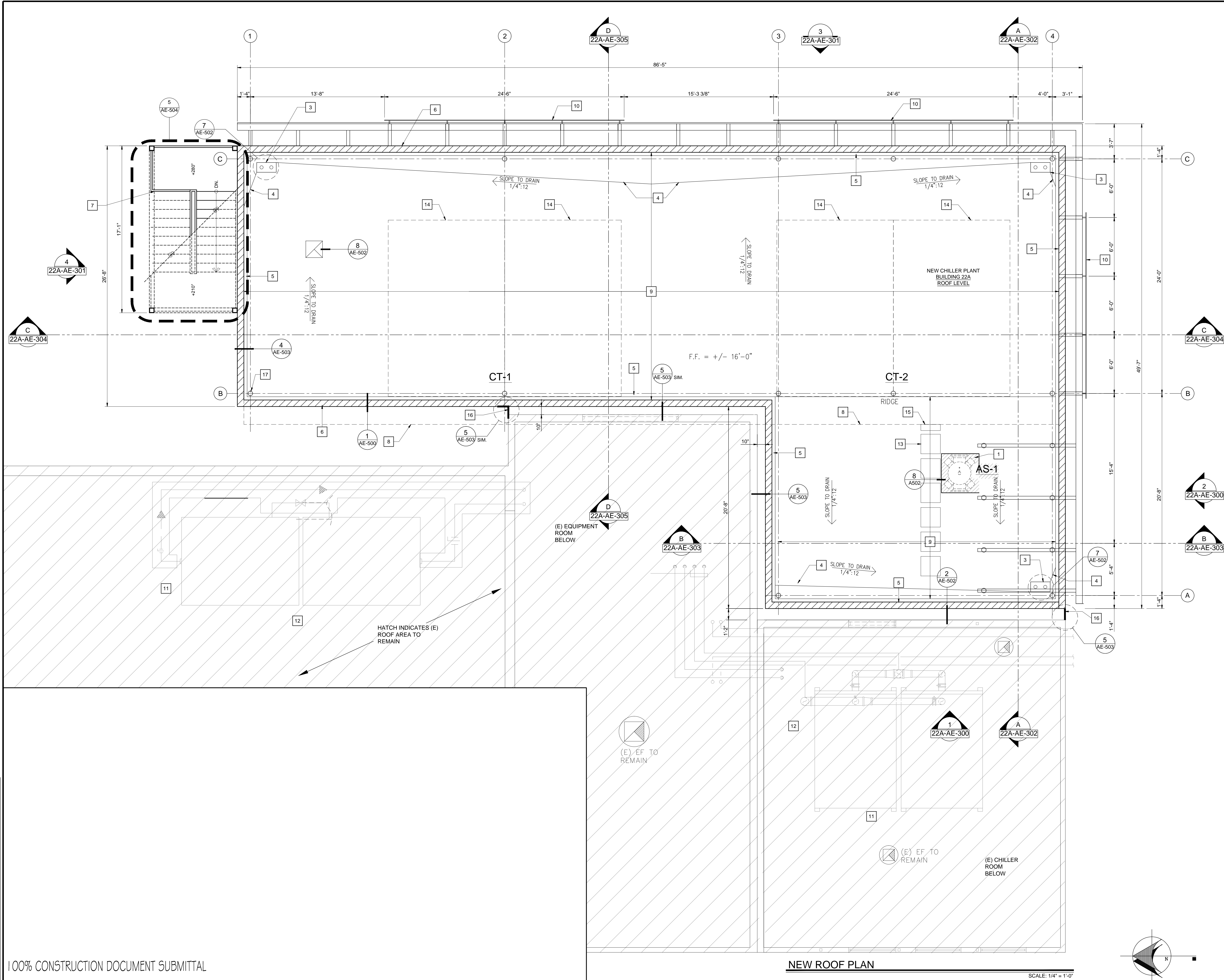


three inches = one foot
one and one half inches = one foot
one inch = one foot
three quarters inch = one foot
one half inch = one foot
three eighths inch = one foot
one quarter inch = one foot
one eighth inch = one foot



SHEET NOTES

1

AIR SEPARATOR & EQUIPMENT PAD ON ROOF, (SEE MECHANICAL & STRUCTURAL DRAWINGS)

2

CONDENSER WATER FILTRATION SYSTEM x 2 (SEE MECHANICAL & STRUCTURAL DRAWINGS)

3

ROOF AND OVERFLOW DRAINS

4

ROOF CRICKET, TYP.

5

4' CANT, TYP.

6

PARAPET, TYP. - SEE HEIGHT PER SECTIONS, ELEVATIONS AND WALL SECTIONS

7

PRE-FABRICATED RECTANGULAR SWITCHBACK STAIR TO COOLING PLATFORM

8

LINE OF COOLING TOWERS PLATFORM ABOVE

9

MEMBRANE ROOFING, TYP. CLASS 'A' - SEE SPECIFICATIONS

10

SOUND AND EQUIPMENT SCREEN WITH RAISED PERFORATED PANELS, (SEE STRUCTURAL DRAWINGS)

11

REMOVE COOLING TOWER FROM ROOF, COMPLETE. (SEE MECHANICAL DRAWINGS) - PATCH ROOF

12

EXISTING ROOF TO BE PATCHED BACK AND PENETRATIONS SEALED, WATER TIGHT SEE SHEET AE 601 FOR NEW CORES AND PENETRATION DETAILS AND SPECIFICATIONS ON RE-ROOFING REQUIREMENTS.

13

ROOF TOP WALKWAY

14

OUTLINE OF NEW COOLING TOWER ABOVE, (SEE MECHANICAL DRAWINGS)

15

LADDER DOWN FROM COOLING PLATFORM TO ROOF LEVEL

16

SEISMIC JOINT TYP. (SEE DETAILS ON SHEET AE-503)

17

STEEL COLUMNS PENETRATE ROOF, TYP. - MAKE COMPLETELY WATER TIGHT

18

NOT USED

19

AWNING BELOW

WALL LEGEND

CMU WALL TYP.

SCREEN WALL

PERFORATED PANEL

NOTE ON VERTICAL DIMENSIONS:

REFERENCE ZERO = + 100'-0"

REFER TO ARCHITECTURAL AND STRUCTURAL DRAWINGS FOR BUILDING FINISH FLOORS AND HEIGHT DIMENSIONS THROUGHOUT.

REFER TO CIVIL SHEETS FOR ACTUAL ELEVATIONS ABOVE SEA LEVEL IN REFERENCE TO GROUND LEVEL TOPOGRAPHY AND LANDSCAPED ELEMENTS.

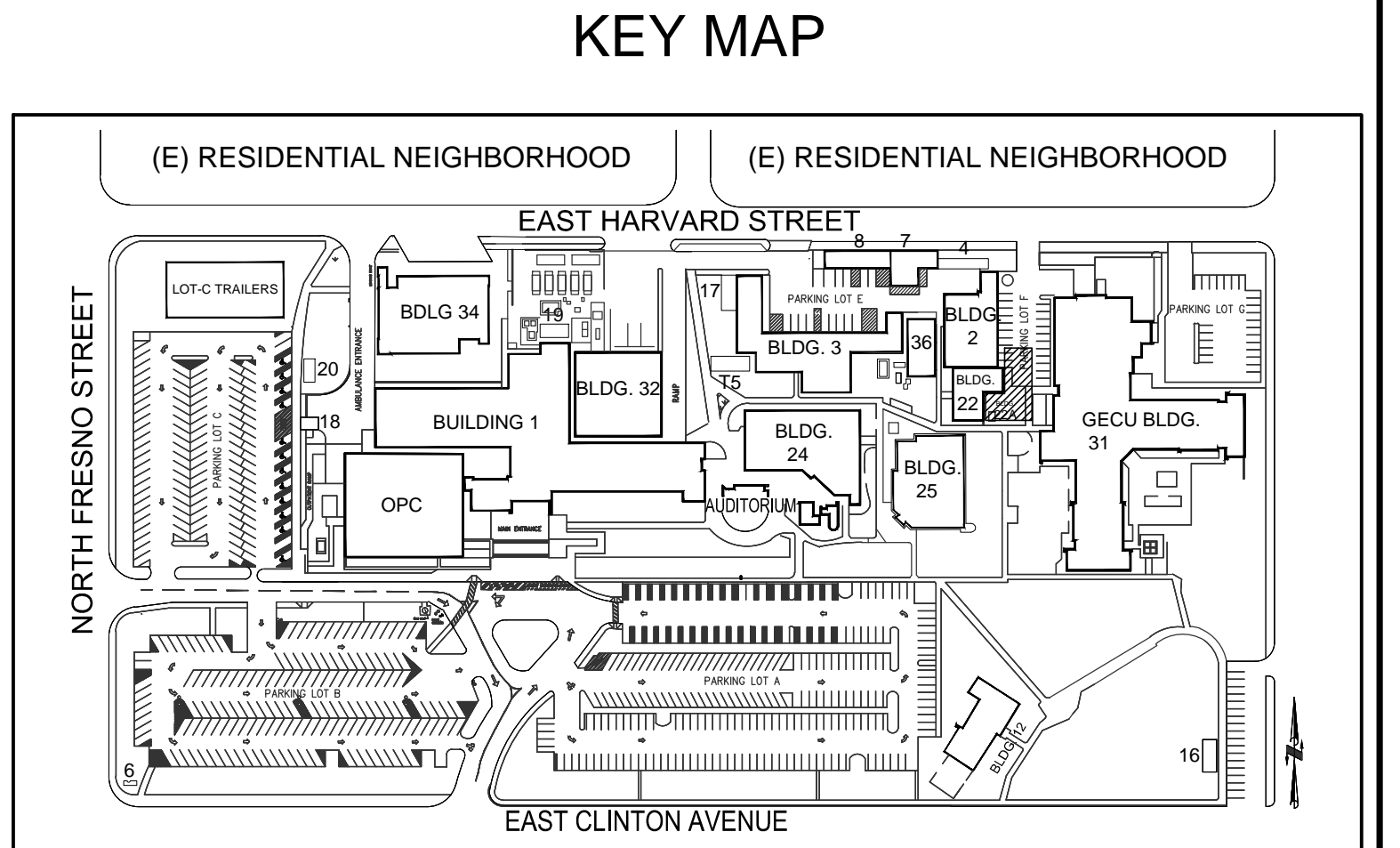
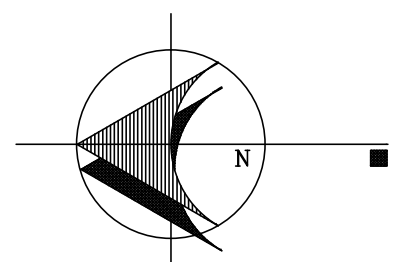
CONTRACTOR'S NOTE

1. ALL OF BUILDING 22A AND CHILLER INFRASTRUCTURE SHALL BE NEW AND PROVIDED BY THE CONTRACTOR, UNLESS NOTED OTHERWISE.

100% CONSTRUCTION DOCUMENT SUBMITTAL

NEW ROOF PLAN

SCALE: 1/4" = 1'-0"



		CONSULTANTS:				ARCHITECT/ENGINEERS:		Drawing Title LOWER ROOF PLAN		Project Title VA CENTRAL CALIFORNIA HEALTH CARE SYSTEM NEW BUILDING 22A + CHILLER INFRASTRUCTURE		Project Number 570-13-300		Office of Construction and Facilities Management			
						 <div>hfp architects 745 distel drive los altos, ca 94022 650 964 4514 fax: 650 967 5148</div> 		Approved: Project Director		Location FRESNO, CA.		Building Number 22A				Drawing Number 22A-AE-201	
								Date 5/08/2015		Checked N.V.		Drawn T.S.				Dwg. 14 of 86	
Revisions:		Date															