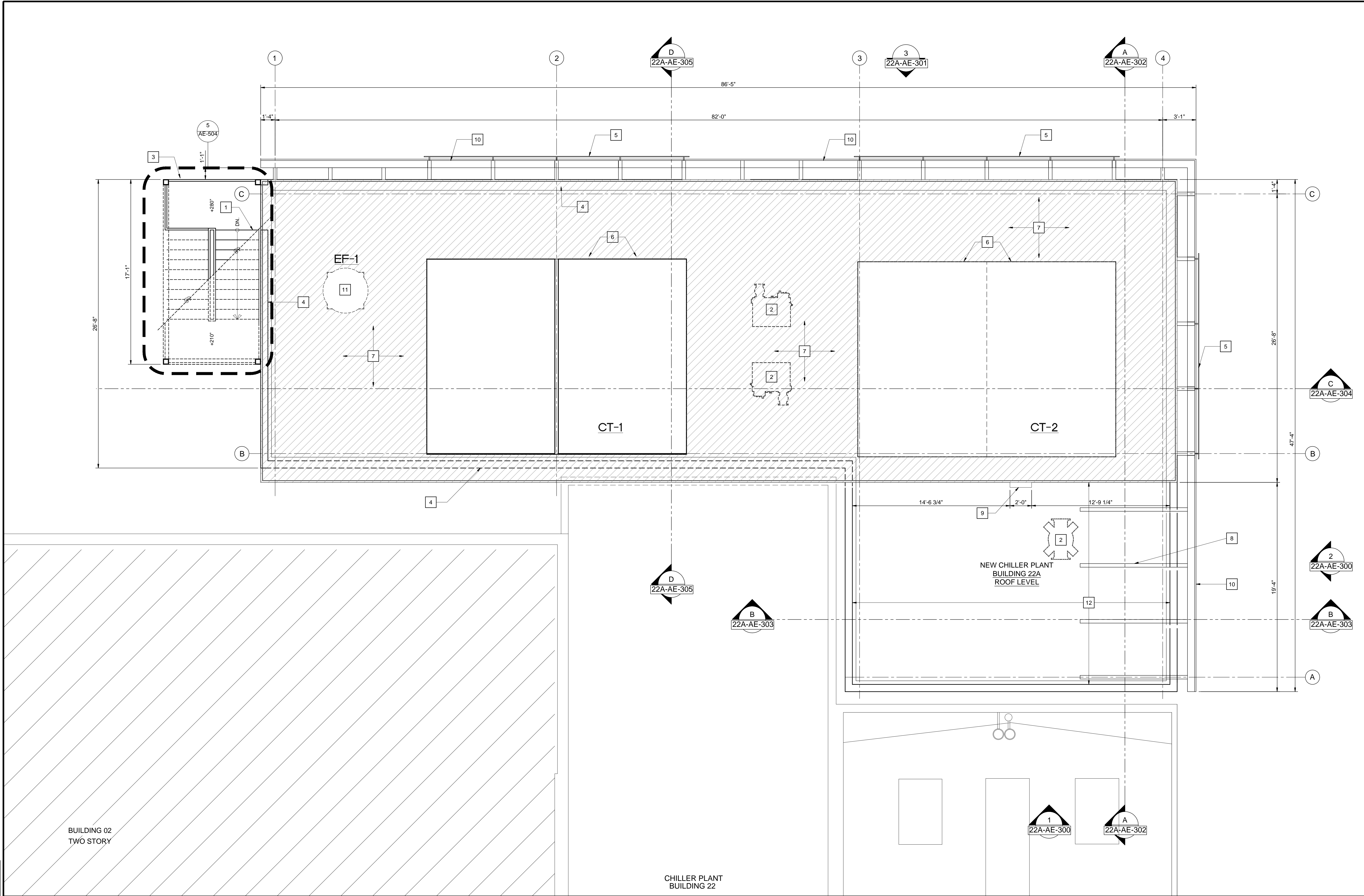


A
three inches = one foot
1
6
0
B
one and one half inches = one foot
1
6
0
C
one inch = one foot
1
6
0
D
three quarters inch = one foot
2
6
0
E
one half inch = one foot
4
6
0
F
three eighths inch = one foot
8
6
0
G
one quarter inch = one foot
16
6
0
H
one eighth inch = one foot
32
6
0



SHEET NOTES

1

EQUIPMENT WALL DIAGONAL STRUT - REFER TO STRUCTURAL FOR DETAILS SHEET 22A-S-553

2

MECHANICAL EQUIPMENT - SEE MECH.

3

PRE-FABRICATED STEEL RECTANGULAR SWITCHBACK STAIR DOWN TO GROUND LEVEL.

4

NEW CMU PARAPET BELOW - TYP.

5

PERFORATED PANELS MOUNTED OFF THE FACE OF THE EQUIPMENT SCREEN. SEE SHEET 22A-AE-403

6

COOLING TOWERS - SEE MECH.

7

GRIP STRUT GRATING. (SEE STRUCTURAL DRAWINGS)

8

DIAGONAL BRACING FOR EQUIPMENT SCREEN SEE STRUCTURAL SHEETS.

9

LADDER ACCESS TO COOLING TOWER PLATFORM

10

SOUND AND EQUIPMENT SCREEN. (SEE STRUCTURAL DRAWINGS)

11

EXHAUST FAN - SEE MECH.

12

LOWER ROOF DECK BELOW

NOTE ON VERTICAL DIMENSIONS:

REFERENCE ZERO = + 100'-0"
REFER TO ARCHITECTURAL AND STRUCTURAL DRAWINGS FOR BUILDING FINISH FLOORS AND HEIGHT DIMENSIONS THROUGHOUT.
REFER TO CIVIL SHEETS FOR ACTUAL ELEVATIONS ABOVE SEA LEVEL IN REFERENCE TO GROUND LEVEL TOPOGRAPHY AND LANDSCAPED ELEMENTS.

CONTRACTOR'S NOTE

1

ALL OF BUILDING 22A AND CHILLER INFRASTRUCTURE SHALL BE NEW AND PROVIDED BY THE CONTRACTOR, UNLESS NOTED OTHERWISE.

2

SEE ELECTRICAL SHEET 22-ES-105 FOR LIGHT FIXTURE AND ELECTRICAL OUTLET LOCATIONS AND TYPES.

100% CONSTRUCTION DOCUMENT SUBMITTAL

CONSULTANTS:

ARCHITECT/ENGINEERS:

745 distel drive
los altos, ca 94022
650 964 4514 fax: 650 967 5148

Drawing Title
UPPER COOLING TOWER PLATFORM PLAN

Approved: Project Director

Project Title
VA CENTRAL CALIFORNIA HEALTH CARE SYSTEM
NEW BUILDING 22A + CHILLER INFRASTRUCTURE

Location
FRESNO, CA.

Date
5/08/2015

Checked
N.V.

Drawn
T.S.

Project Number
570-13-300
Building Number
22A

Drawing Number
22A-AE-202
Dwg.15 of 86

Office of
Construction
and Facilities
Management

Department of
Veterans Affairs

VA FORM 08-6231 1 2 3 4 5 6 7 8 9