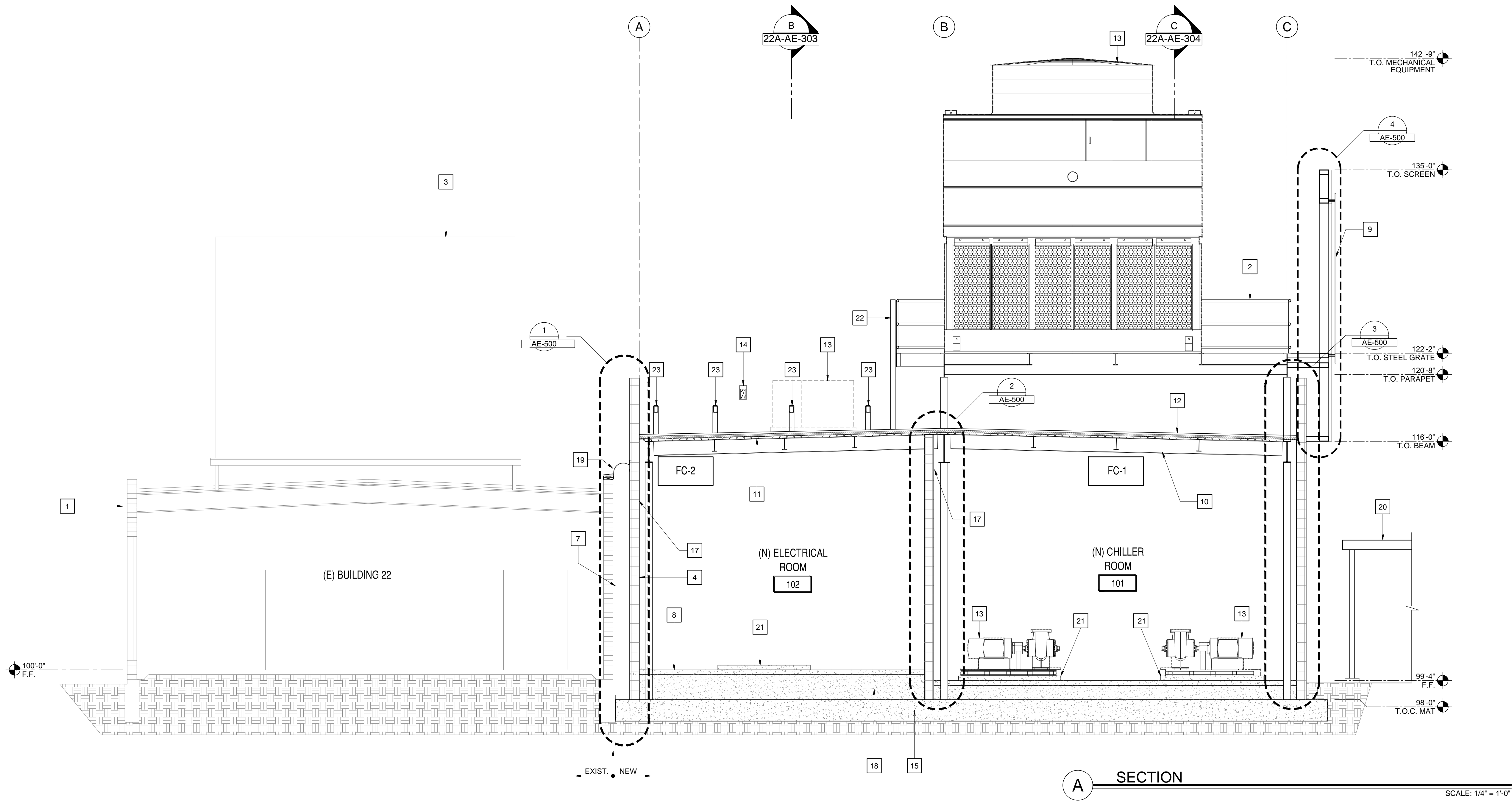
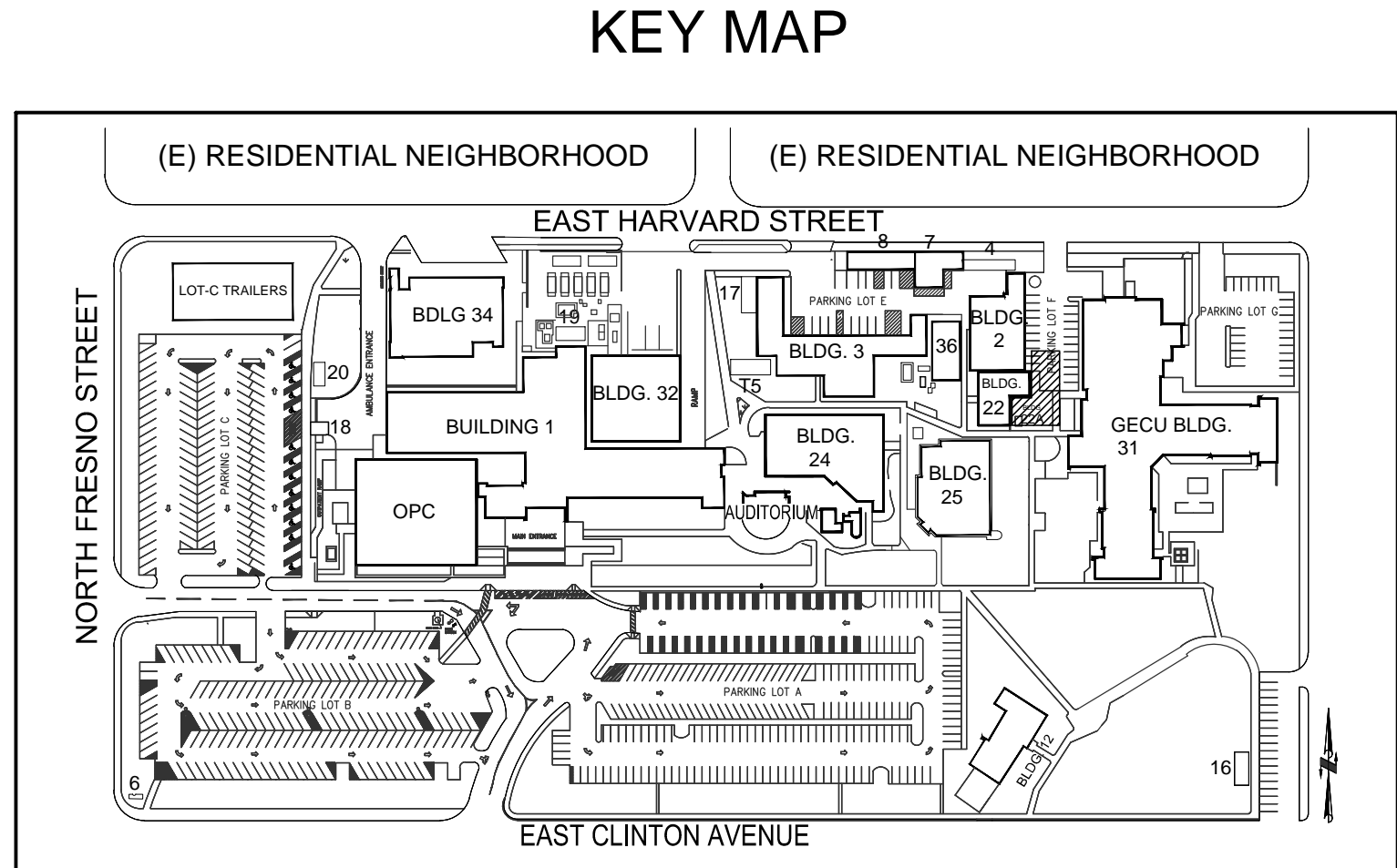


three inches = one foot
one and one half inches = one foot
one inch = one foot
three quarters inch = one foot
one half inch = one foot
three eighths inch = one foot
one quarter inch = one foot
one eighth inch = one foot



- ### SHEET NOTES
- 1 EXISTING BUILDING TO REMAIN, (TYP.)
 - 2 36" WIDE CATWALK W/ RAILING VERIFY CONNECTIONS W/ STRUCTURAL ENGINEER AND SHOP DRWGS.
 - 3 PATCH BACK ALL ADJ. FINISHES TO MATCH EXISTING, AS REQ. FOR MECHANICAL WORK IN THIS AREA - SEE MECHANICAL SHEETS.
 - 4 CMU WALL TO MATCH EXISTING IN COLOR AND FINISH MODULE SHALL BE 8X8X16.
 - 5 NOT USED
 - 6 NOT USED
 - 7 BUILDING SEISMIC JOINT
 - 8 CONCRETE TOPPING SLAB, (SEE STRUCTURAL DRAWINGS)
 - 9 SOUND AND EQUIPMENT SCREEN, (SEE STRUCTURAL DRAWINGS)
 - 10 STEEL BEAM, (SEE STRUCTURAL DRAWINGS)
 - 11 METAL DECK, (SEE STRUCTURAL DRAWINGS)
 - 12 TAPERED ROOF INSULATION SYSTEM O/ LIGHT WEIGHT CONCRETE
 - 13 GFCI MECHANICAL UNIT, (SEE MECHANICAL DRAWINGS)
 - 14 EXTERIOR LIGHT, (SEE ELECTRICAL DRAWINGS)
 - 15 MAT FOOTING, (SEE STRUCTURAL DRAWINGS)
 - 16 NOT USED
 - 17 1 HOUR OCCUPANCY SEPARATION WALL
 - 18 COMPACTED FILL BETWEEN MAT SLAB AND CONC. TOPPING SLAB
 - 19 SEISMIC JOINT COVER
 - 20 EXISTING WALKWAY CANOPY SEE PLAN SHEETS FOR AREAS TO BE REMOVED FOR NEW BUILDING 22A.
 - 21 EQUIPMENT HOUSEKEEPING PAD TYP.
 - 22 ACCESS LADDER
 - 23 EQUIPMENT & SOUND SCREEN DIAGONAL SUPPORTS (SEE STRUCTURAL DRAWINGS)
- ### NOTE ON VERTICAL DIMENSIONS:
- REFERENCE ZERO = + 100'-0"
REFER TO ARCHITECTURAL AND STRUCTURAL DRAWINGS FOR BUILDING FINISH FLOORS AND HEIGHT DIMENSIONS THROUGHOUT.
REFER TO CIVIL SHEETS FOR ACTUAL ELEVATIONS ABOVE SEA LEVEL IN REFERENCE TO GROUND LEVEL TOPOGRAPHY AND LANDSCAPED ELEMENTS.



100% CONSTRUCTION DOCUMENT SUBMITTAL

Revisions	Date	CONSULTANTS:	ARCHITECT/ENGINEERS:	Drawing Title SECTION A	Project Title VA CENTRAL CALIFORNIA HEALTH CARE SYSTEM NEW BUILDING 22A + CHILLER INFRASTRUCTURE	Project Number 570-13-300	Office of Construction and Facilities Management
				Approved: Project Director	Location FRESNO, CA.	Building Number 22A	Department of Veterans Affairs
					Date 5/08/2015	Drawing Number 22A-AE-302	
					Checked N.V.	Dwg. 19 of 86	
					Drawn T.S.		

VA FORM 08-6231