

three inches = one foot

one and one half inches = one foot

one inch = one foot

three quarters inch = one foot

one half inch = one foot

three eighths inch = one foot

one quarter inch = one foot

one eighth inch = one foot

A

WD

C

D

M

T

FILE

100% CONSTRUCTION DOCUMENT SUBMITTAL

CONSULTANTS:

ARCHITECT/ENGINEERS:



hfp architects
745 distel drive
los altos, ca 94022
650 964 4514 fax: 650 967 5148



Drawing Title
SECTION D

Approved: Project Director

Project Title
VA CENTRAL CALIFORNIA HEALTH CARE SYSTEM
NEW BUILDING 22A + CHILLER INFRASTRUCTURE

Location
FRESNO, CA.

Date
5/08/2015

Checked
N.V.

Drawn
T.S.

Project Number
570-13-300
Building Number
22A

Drawing Number
22A-AE-305

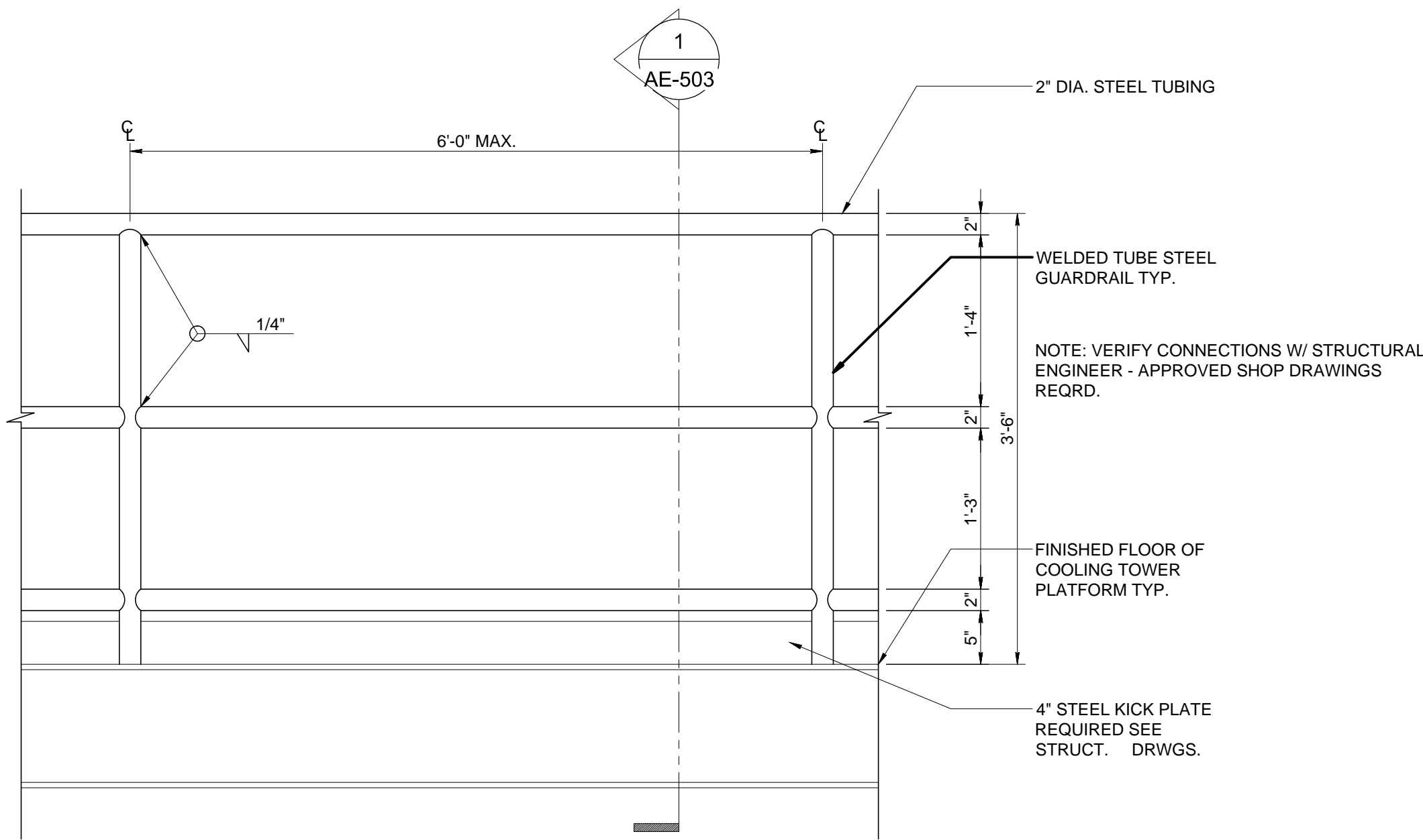
Dwg.22 of 86

Office of
Construction
and Facilities
Management



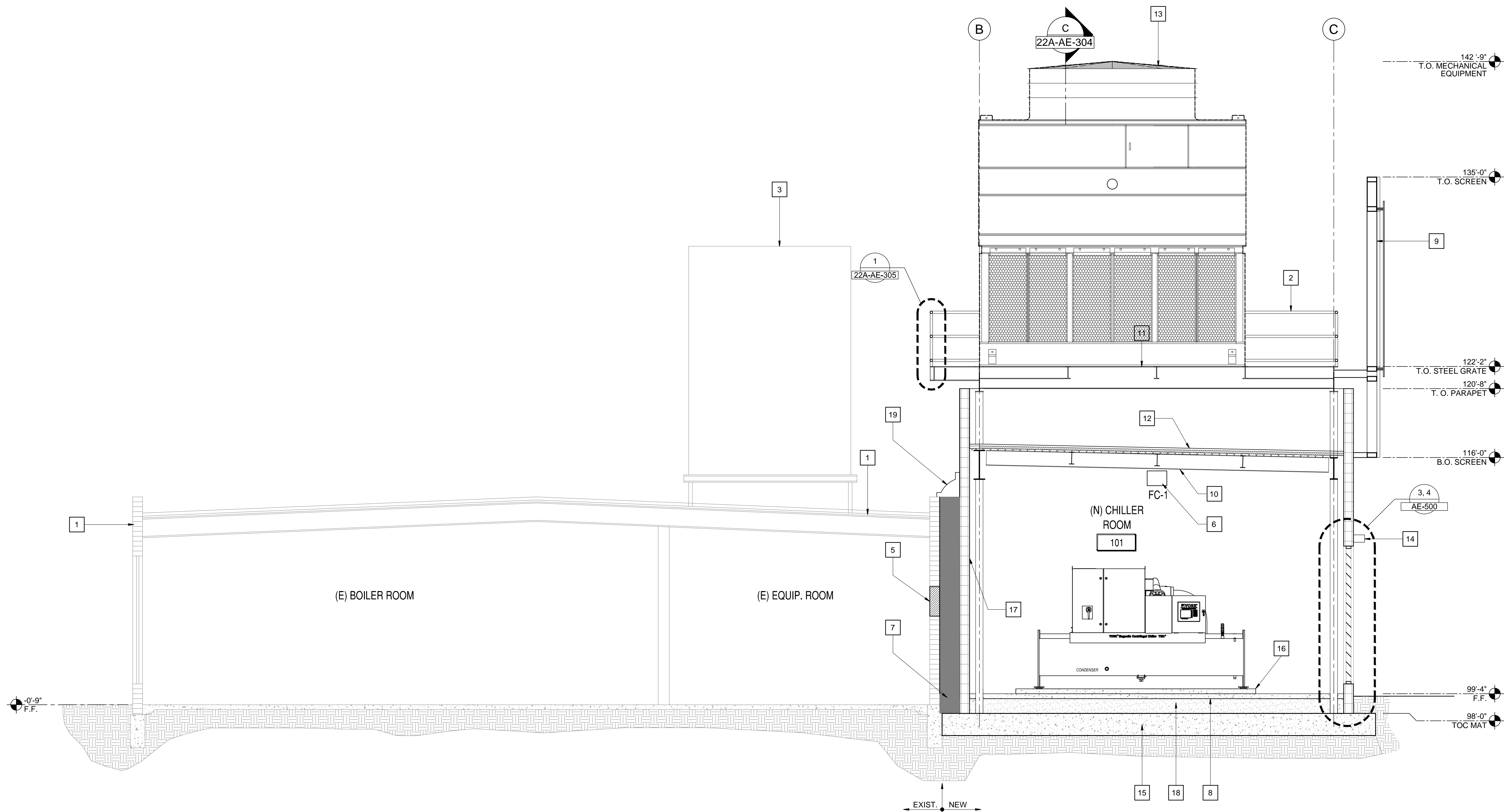
SHEET NOTES

- 1
- EXISTING BUILDING TO REMAIN, (TYP.)
- 2
- 36" WIDE CATWALK W/ RAILING
- 3
- COOLING TOWER (E)
- 4
- NOT USED
- 5
- INFILL EXISTING WALL OPENING PER STRUCTURAL
-
- FLUSH TO EXISTING FACE INTERIOR & EXTERIOR.
- 6
- AIR HANDLER DAMPER ASSEMBLY
- 7
- BUILDING EXPANSION JOINT
- 8
- CONCRETE TOPPING SLAB, (SEE STRUCTURAL DRAWINGS)
- 9
- SOUND ATTENUATED EQUIPMENT/ROOF SCREEN
- 10
- STEEL BEAM, (SEE STRUCTURAL DRAWINGS)
- 11
- METAL GRATE, (SEE STRUCTURAL DRAWINGS)
- 12
- TAPERED ROOF INSULATION SYSTEM O/ LIGHT WEIGHT CONCRETE
- 13
- FUTURE MECHANICAL UNIT, (SEE MECHANICAL DRAWINGS)
- 14
- EXTERIOR LIGHT FIXTURE AT 9'-0" AFF, (SEE ELECTRICAL DRAWINGS)
- 15
- MAT FOOTING, (SEE STRUCTURAL DRAWINGS)
- 16
- EQUIPMENT HOUSEKEEPING PAD
- 17
- 1 HOUR OCCUPANCY SEPARATION WALL
- 18
- COMPACTED FILL BETWEEN MAT SLAB AND CONC. TOPPING SLAB
- 19
- EXPANSION JOINT COVER



1 RAILING DETAIL

SCALE: 1" = 1'-0"



D SECTION

SCALE: 1/4" = 1'-0"

KEY MAP

