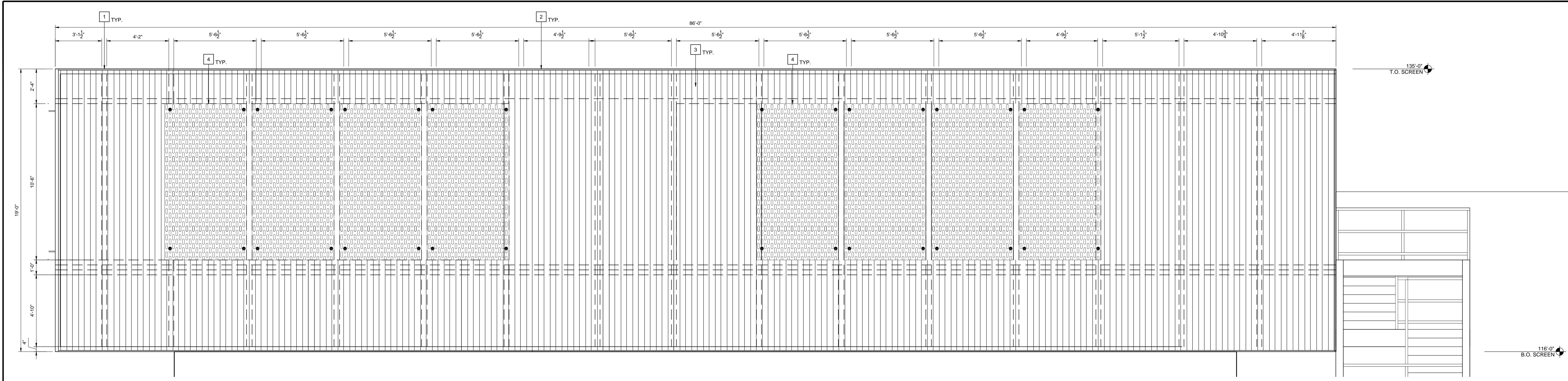
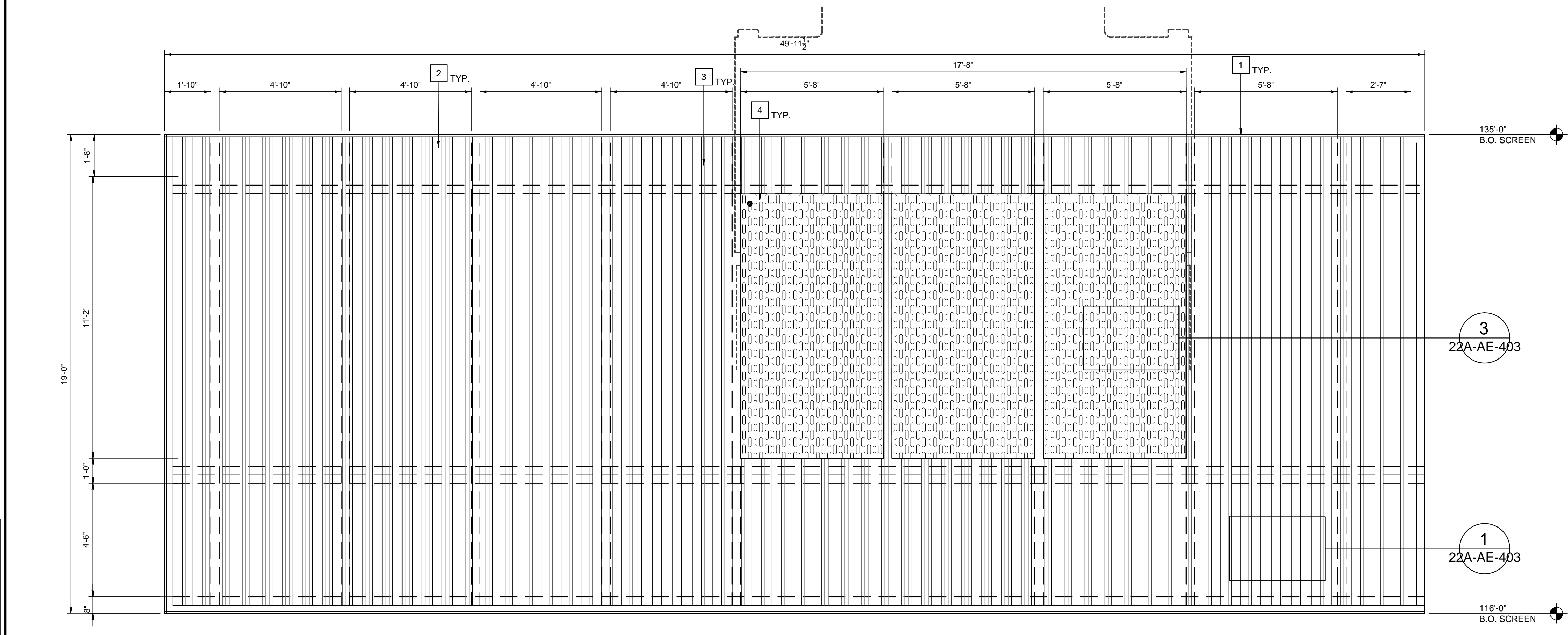


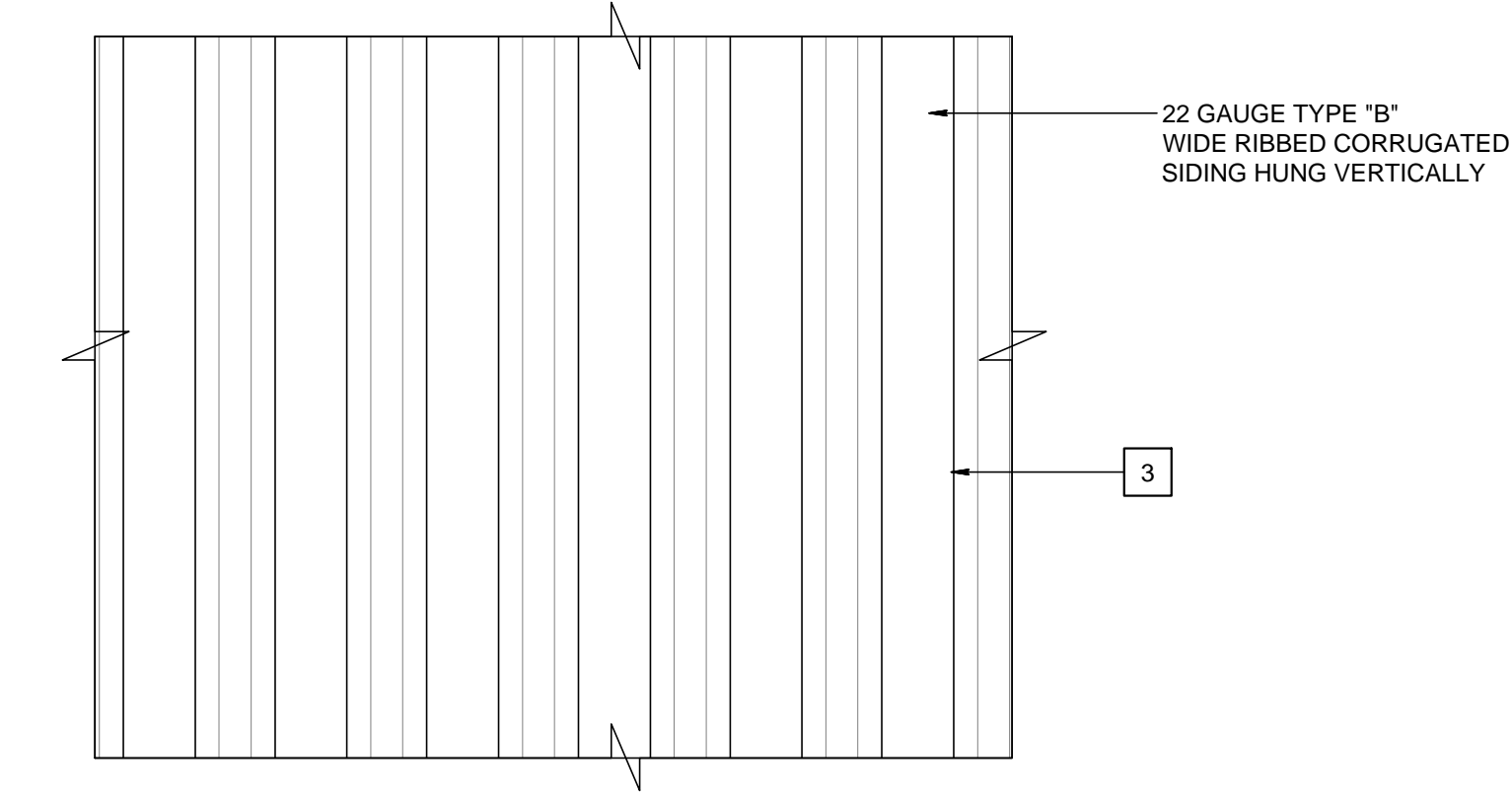
A  
three inches = one foot  
1  
6"  
B  
one and one half inches = one foot  
1  
6"  
C  
one inch = one foot  
1  
6"  
D  
three quarters inch = one foot  
2  
6"  
E  
one half inch = one foot  
4  
6"  
F  
three eighths inch = one foot  
8  
6"  
G  
one quarter inch = one foot  
16  
6"  
H  
one eighth inch = one foot  
32  
6"



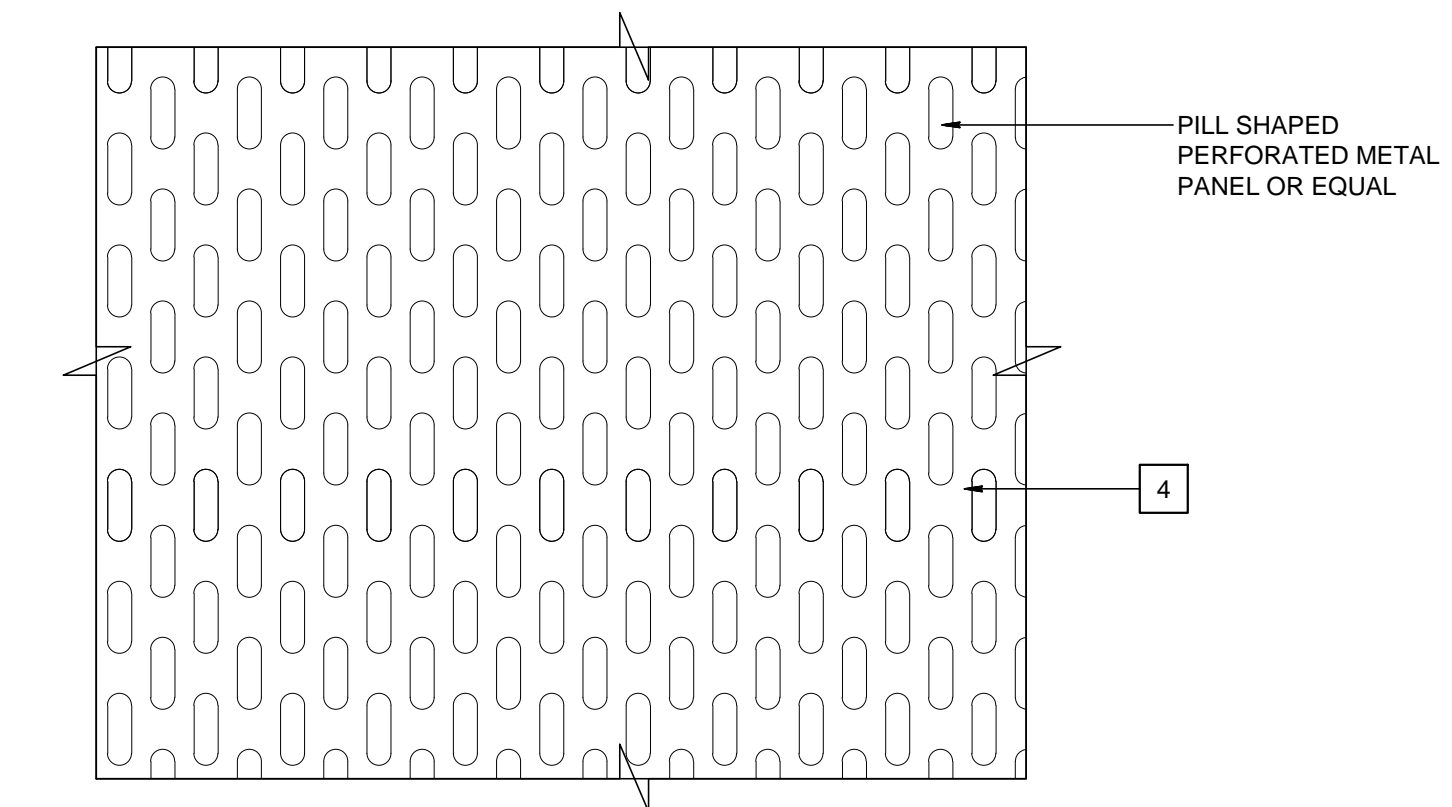
2 EAST EQUIPMENT SCREEN ELEVATION  
SCALE: 3/8" = 1'-0"



4 SOUTH EQUIPMENT SCREEN ELEVATIONS  
SCALE: 3/8" = 1'-0"



1 DECORATIVE SCREEN PATTERN  
SCALE: 6" = 1'-0"



3 DECORATIVE PERFORATED PANEL PATTERN  
SCALE: 6" = 1'-0"

- SHEET NOTES**
- 1 NEW SOUND ATTENUATING EQUIPMENT SCREEN. ( SEE STRUCTURAL DRAWINGS FOR CONNECTION DETAILS, ETC. )
  - 2 NEW DECORATIVE SCREEN (SEE DETAIL 1/22-AE-403)
  - 3 CORRUGATED VERTICAL SIDING AS OUTER COVERING.
  - 4 SUSPENDED VERTICAL PERFORATED PANEL - ALIGN WITH COOLING TOWERS AS SHOWN

100% CONSTRUCTION DOCUMENT SUBMITTAL

<table><tr><td>Revisions</td><td>Date</td></tr><tr><td> </td><td> </td></tr><tr><td> </td><td> </td></tr><tr><td> </td><td> </td></tr></table>	Revisions	Date							CONSULTANTS:	ARCHITECT/ENGINEERS:	<table><tr><td colspan="2">hfp architects</td></tr><tr><td colspan="2">745 distel drive</td></tr><tr><td colspan="2">los altos, ca 94022</td></tr><tr><td colspan="2">650 964 4514 fax: 650 967 5148</td></tr></table>	hfp architects		745 distel drive		los altos, ca 94022		650 964 4514 fax: 650 967 5148		<table><tr><td>Drawing Title</td><td colspan="2">EQUIPMENT SCREEN ELEVATIONS</td></tr><tr><td>Approved: Project Director</td><td colspan="2"> </td></tr></table>	Drawing Title	EQUIPMENT SCREEN ELEVATIONS		Approved: Project Director			<table><tr><td colspan="2">Project Title</td><td>Project Number</td></tr><tr><td colspan="2">VA CENTRAL CALIFORNIA HEALTH CARE SYSTEM</td><td>570-13-300</td></tr><tr><td colspan="2">NEW BUILDING 22A + CHILLER INFRASTRUCTURE</td><td>Building Number</td></tr><tr><td colspan="2"> </td><td>22A</td></tr><tr><td colspan="2">Location</td><td>Drawing Number</td></tr><tr><td colspan="2">FRESNO, CA.</td><td>22A-AE-403</td></tr><tr><td>Date</td><td>Checked</td><td>Drawn</td></tr><tr><td>5/08/2015</td><td>N.V.</td><td>T.S.</td></tr></table>	Project Title		Project Number	VA CENTRAL CALIFORNIA HEALTH CARE SYSTEM		570-13-300	NEW BUILDING 22A + CHILLER INFRASTRUCTURE		Building Number			22A	Location		Drawing Number	FRESNO, CA.		22A-AE-403	Date	Checked	Drawn	5/08/2015	N.V.	T.S.	<table><tr><td colspan="2">Office of Construction and Facilities Management</td></tr><tr><td colspan="2">Department of Veterans Affairs</td></tr></table>	Office of Construction and Facilities Management		Department of Veterans Affairs	
	Revisions	Date																																																						
hfp architects																																																								
745 distel drive																																																								
los altos, ca 94022																																																								
650 964 4514 fax: 650 967 5148																																																								
Drawing Title	EQUIPMENT SCREEN ELEVATIONS																																																							
Approved: Project Director																																																								
Project Title		Project Number																																																						
VA CENTRAL CALIFORNIA HEALTH CARE SYSTEM		570-13-300																																																						
NEW BUILDING 22A + CHILLER INFRASTRUCTURE		Building Number																																																						
		22A																																																						
Location		Drawing Number																																																						
FRESNO, CA.		22A-AE-403																																																						
Date	Checked	Drawn																																																						
5/08/2015	N.V.	T.S.																																																						
Office of Construction and Facilities Management																																																								
Department of Veterans Affairs																																																								