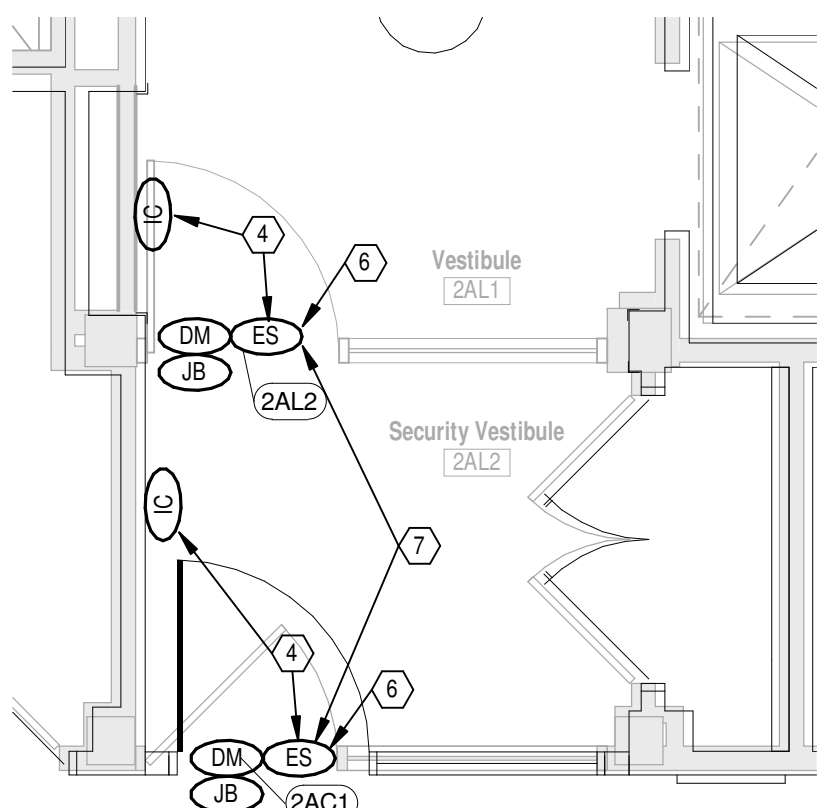


- GENERAL NOTES**
- A. EXISTING RAULAND "RESPONDER" NURSE CALL SYSTEM SHALL BE EXPANDED TO PICK UP ALL NEW NURSE CALL DEVICES. CONTRACTOR SHALL COORDINATE WITH MR. STEVE BLAZER @ DATA TALK, (941) 784-1700 (LOCAL) TO ENSURE CONSISTENCY OF CORRECT PRODUCT MODEL NUMBERS AND INSTALLATION METHODS.
 - B. THE EXISTING SIMPLEX FIRE ALARM SYSTEM SHALL BE EXPANDED TO PICK UP ALL NEW DEVICES. CONTRACTOR SHALL COORDINATE WITH SIMPLEX GRINNELL, MR. BILL FONDOLUS (WFOFONDOLUS@SIMPLEXGRINNELL.COM) TO ENSURE CONSISTENCY OF CORRECT PRODUCT MODEL NUMBER AND INSTALLATION METHODS.
 - C. ALL NEW DEVICES SHALL BE PROVIDED WITH TAMPERPROOF COVERPLATES AND SCREWS.
 - D. EXISTING NURSE CALL PULL STATIONS (60" MH) WITHIN SHOWERS BEING REMOVED ARE TO BE REPLACED WITH NEW HIGH SECURITY BATH / EMERGENCY PUSH BUTTON TYPE. RAULAND RESPONDER MODEL #H5543.
 - E. EXISTING NURSE CALL PULL STATIONS (46" MH) WITHIN PATIENT RESTROOMS SHALL BE REPLACED WITH NEW HIGH SECURITY BATH / EMERGENCY PUSH BUTTON TYPE. RAULAND RESPONDER MODEL #H5543.
 - F. MAINTAIN THE EXISTING WIRELESS PANIC DURESS SYSTEM. THE VA WILL BE PROVIDING A CONCURRENT PROJECT TO MODIFY THIS SYSTEM. COORDINATE WITH VA FOR ACCESS TO THE SPACE BY RELATED CONTRACTORS.
 - G. THE EXISTING WIRELESS NETWORK SYSTEM IS TO BE RE-CONFIGURED WITH NEW WAP LOCATIONS AND DATA DROPS TO SERVE THE NEW LOCATIONS. EXISTING CEILING MOUNTED WAPS ARE TO BE TAKEN DOWN, STORED BY THE VA, AND RE-INSTALLED BY THIS CONTRACTOR IN THE NEW LAYOUT. THE FINAL WAP LAYOUT IS TO BE VERIFIED WITH VA PRIOR TO INSTALLATION OF DATA DROPS OR WAPS. VA WILL PERFORM THE RF SITE SURVEY AFTER INSTALLATION OF WAPS TO VERIFY FINAL SYSTEM PERFORMANCE.

- NOTES**
- 1. EXISTING SIGNALS CLOSET. PROVIDE NEW RACK MOUNTED PATCH PANELS (BLUE/YELLOW) FOR TERMINATION OF NEW DATA STATION CABLING. RE-USE EXISTING PATCH PANELS WHERE OPEN PORTS ARE AVAILABLE.
 - 2. PROVIDE NEW WALL MOUNTED 110 WALL FIELD FOR TERMINATION OF NEW VOICE STATION CABLING. RE-USE EXISTING 110 WALL FIELDS WHERE OPEN PORTS ARE AVAILABLE.
 - 3. EXISTING AREA TO REMAIN UNCHANGED UNLESS OTHERWISE NOTED.
 - 4. TIE NEW DOOR LOCK INTO NEW INTERCOM SYSTEM WITH REMOTE DOOR RELEASE FOR INTERCOM MASTER STATION LOCATIONS.
 - 5. FACP IS LOCATED IN THE EXISTING MAIN ELECTRIC ROOM, BASEMENT LEVEL.
 - 6. TIE NEW DOOR LOCK INTO REMOTE PUSHBUTTON CONTROL AT NURSE STATION.
 - 7. PROVIDE DOOR CONTROL PANEL IN SIGNALS CLOSET TO PERFORM MAIN TRAP FUNCTIONALITY BETWEEN PAIR OF DOORS. INTERLOCK ELECTRIC STRIKES TO PREVENT BOTH UNITS FROM BEING UNLOCKED IF EITHER UNIT IS UNLOCKED OR EITHER DOOR IS OPEN.
 - 8. INSTALL AND CONNECT WALL MOUNTED POWER SUPPLY AND CONTROL UNIT FOR NEW ELECTRIC STRIKES (FURNISHED BY G.C.), PUSHBUTTON INTERFACE AND INTERCOM SYSTEM CONTROLLER AND LOCK INTERFACE.
 - 9. AP TO BE RECESS MOUNTED THROUGH SHEET METAL/STEEL PLATE WHICH IS TO BE INSTALLED IN THE ACT GRID.
 - 10. EXISTING WIRELESS ACCESS POINT TO BE MAINTAINED.



3 PARTIAL PLAN - SECURE VESTIBULE
SCALE: 1/4" = 1'-0"

FULLY SPRINKLERED

			CONSULTANTS:			<div><div><div><div><div><div></div><div>Heapy Engineering</div><div>Mechanical Electrical Commissioning Technology</div><div>Nationally Recognized Leader in Sustainability / LEED</div></div></div><div><div>1400 W Dorothy Lane, Dayton OH 45409-1310</div><div>Ph: 937-224-0861 Fax: 937-224-5777 www.heapy.com</div><div>Heapy Project No.: 2011-04032 Firm License No.: 01528</div></div></div></div></div>			<div><div><div><div><div></div><div>STATE OF OHIO</div><div>GARY S. EDDICE E-52755</div><div>REGISTERED PROFESSIONAL ENGINEER</div></div></div></div></div>			ARCHITECT/ENGINEERS:			<div><div><div><div><div><div></div><div>JOHN POE ARCHITECTS</div><div></div></div></div><div><div>116 EAST THIRD STREET DAYTON, OHIO 45402-2130</div><div>937 461 3290 PHONE 937 461 0260 FAX jpa@johnpoe.com</div></div></div></div></div>			<div><div><div><div><div></div><div>Drawing Title</div><div>SECOND FLOOR PLAN - NEW WORK - SIGNALS</div><div>Approved: Project Director</div></div></div></div></div>			<div><div><div><div><div></div><div>Project Title</div><div>Correct Safety Issues for Acute Mental Ward, B35 CD</div><div>Location VAMC Chillicothe</div><div>Date 4/3/2015</div><div>Checked MSG</div><div>Drawn JAS</div></div></div></div></div>			<div><div><div><div><div></div><div>Project No.</div><div>VA Project No. 538-13-105 JPA Project No. 12002.00</div><div>Building Number 35</div><div>Drawing Number 35ET101</div><div>Dwg. 35 of 37</div></div></div></div></div>			<div><div><div><div><div></div><div>Office of Construction and Facilities Management</div><div>Department of Veterans Affairs</div></div></div></div></div>		
<div><div><div><div><div></div><div>1</div><div>Addendum No. 1</div></div><div><div>Revisions</div><div></div><div></div></div></div><div><div>2015-05-18</div><div>Date</div></div></div></div>																													