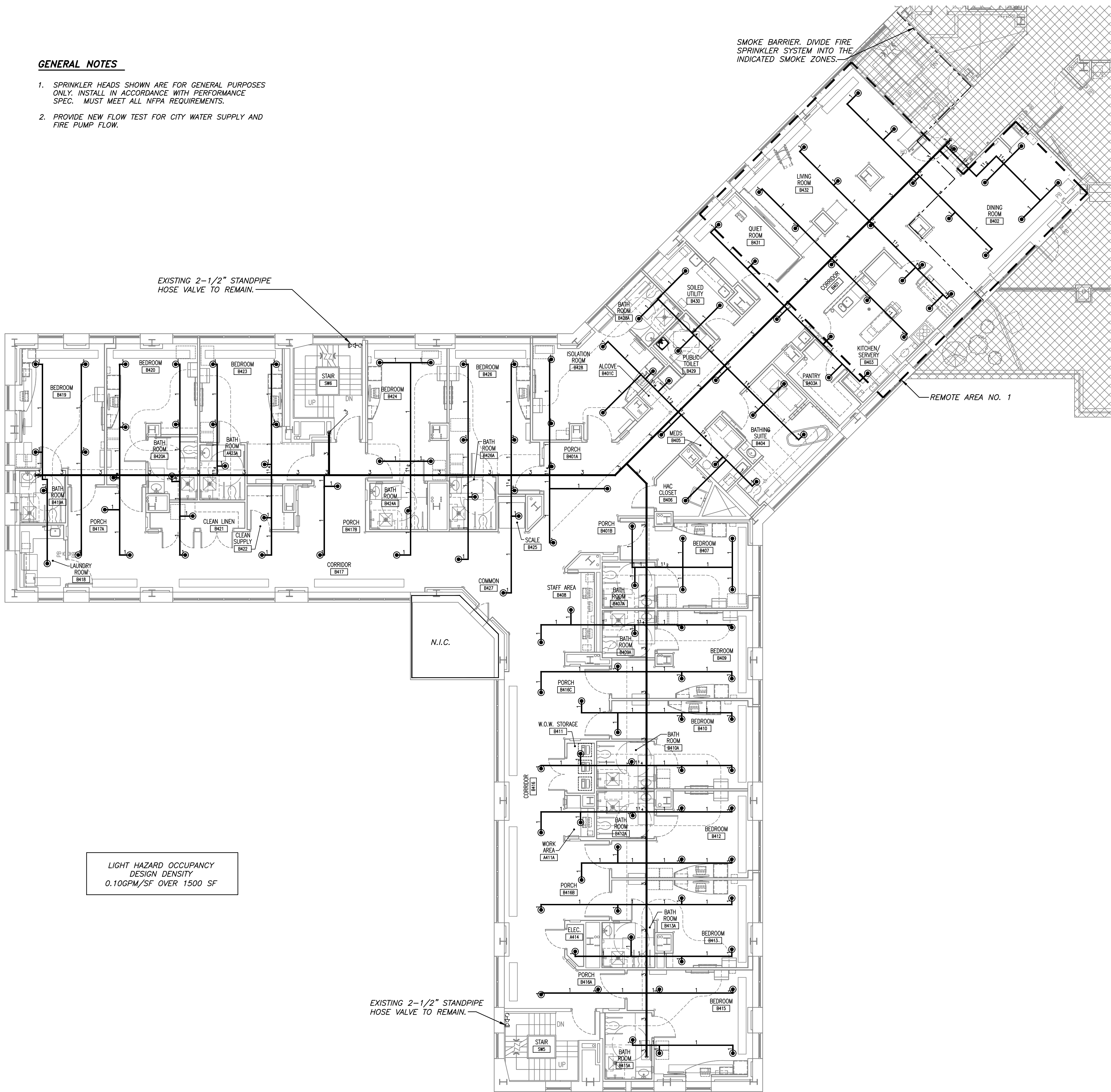


three inches = one foot  
one and one half inches = one foot  
one inch = one foot  
three quarters inch = one foot  
one half inch = one foot  
three eighths inch = one foot  
one quarter inch = one foot  
one eighth inch = one foot  
one eighth inch = one foot

GENERAL NOTES

1. SPRINKLER HEADS SHOWN ARE FOR GENERAL PURPOSES ONLY. INSTALL IN ACCORDANCE WITH PERFORMANCE SPEC. MUST MEET ALL NFPA REQUIREMENTS.
2. PROVIDE NEW FLOW TEST FOR CITY WATER SUPPLY AND FIRE PUMP FLOW.



1 4TH FLOOR FIRE SPRINKLER PLAN - WING B  
F2.11 SCALE: 1/8" = 1'-0"

<div>CONSULTANTS:</div> <div><div>HymanHayes</div><div>6 WEMBLEY COURT, ALBANY, NEW YORK 12205 (518) 452-3470</div></div> <div><div>Adelaide</div><div>1511 Route 22 - Suite C-24 Brewster, New York 10509 p: 845.278.7710 f: 845.278.7750 adelaidelc.com</div></div>		<div>ENGINEERING VENTURES PC</div> <div>208 Flynn Avenue, Suite 2A Burlington, VT 05401 tel: 802.863.6225 • fax: 802.863.6286 85 Mechanic Street, Suite 350A, Lebanon, NH 03766 tel: 603.442.9333 • fax: 603.442.9331</div>		<div>ARCHITECT/ENGINEERS:</div> <div><div>Sigma Psi Consulting</div><div>4 Collamer Road, Malta, NY 12020 PH (518) 581-9428 FX (518) 580-9325</div></div>	<div>Drawing Title</div> <div>4TH FLOOR FIRE SPRINKLER PLAN - WING B</div> <div>Approved Project Director</div> <div></div>	<div>Project Title</div> <div>Renovate 4B for Community Living Center (CLC) Stratton VA Medical Center</div> <div>Location</div> <div>Albany, New York</div> <div>Date</div> <div>10-22-2014</div> <div>Checked</div> <div>Drawn</div>	<div>Project Number</div> <div>VA 528A8-12-890</div> <div>Building Number</div> <div>1</div> <div>Drawing Number</div> <div>F2.11</div> <div>Dwg. 41 of 79</div>		<div>Office of Construction and Facilities Management</div> <div>Department of Veterans Affairs</div>	
---	--	---	--	---	---	--	--	--	---	--