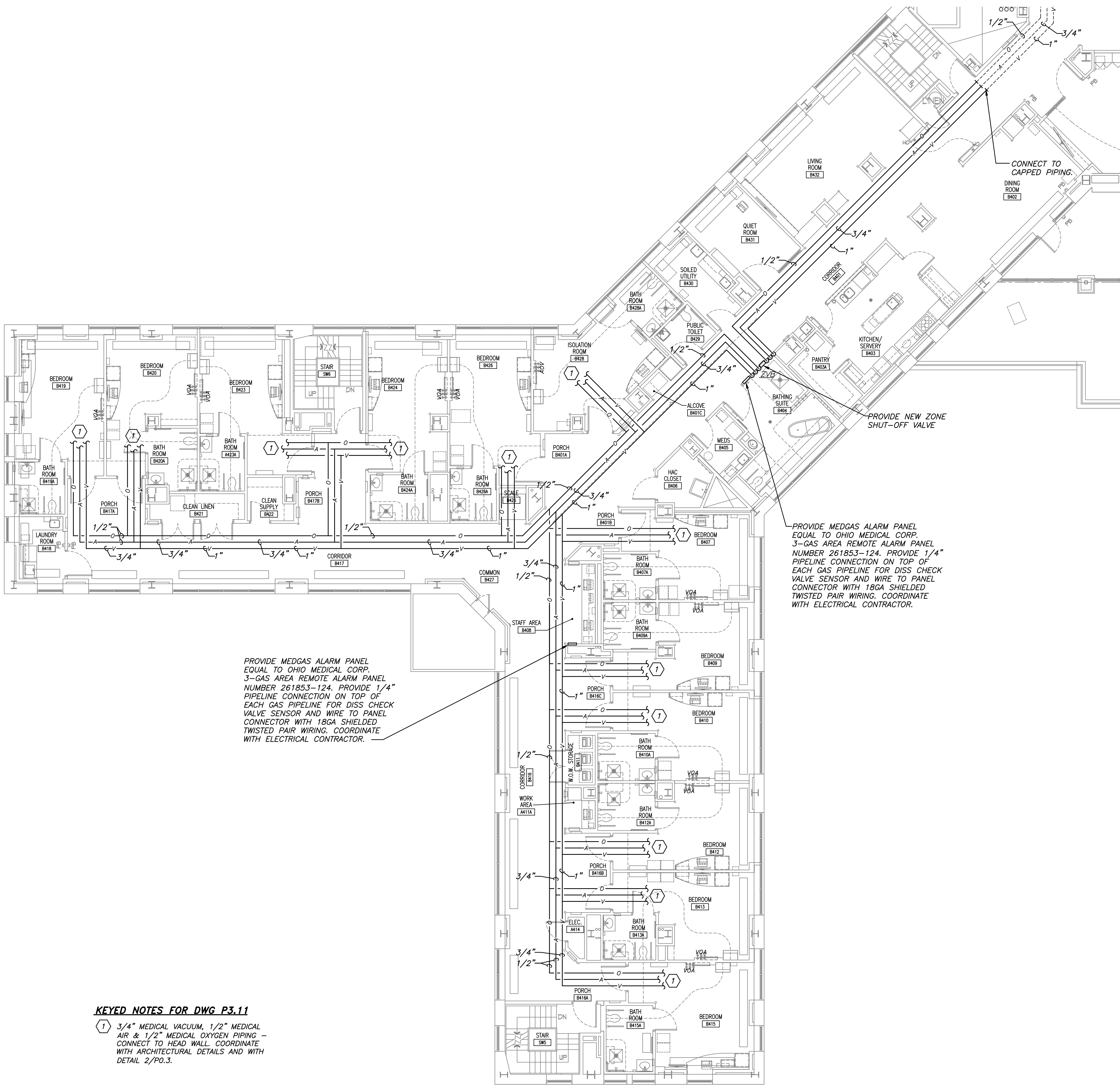


three inches = one foot
one and one half inches = one foot
one inch = one foot
three quarters inch = one foot
one half inch = one foot
three eighths inch = one foot
one quarter inch = one foot
one eighth inch = one foot



KEYED NOTES FOR DWG P3.11

- 1 3/4" MEDICAL VACUUM, 1/2" MEDICAL AIR & 1/2" MEDICAL OXYGEN PIPING - CONNECT TO HEAD WALL - COORDINATE WITH ARCHITECTURAL DETAILS AND WITH DETAIL 2/PO.3.

1 MED GAS PLAN - WING 4B
P3.11 SCALE: 1/8" = 1'-0"

		CONSULTANTS: Hyman Hayes 6 WEMBLEY COURT, ALBANY, NEW YORK 12205 (518) 452-3470 1511 Route 22 - Suite C-24 Brewster, New York 10509 p: 845.278.7710 f: 845.278.7750 adelaidelc.com Adelaide Environmental Health Associates, Inc.		ENGINEERING VENTURES PC 208 Flynn Avenue, Suite 2A Burlington, VT 05401 tel: 802.863.6225 • fax: 802.863.6286 85 Mechanic Street, Suite 350A, Lebanon, NH 03766 tel: 603.442.9333 • fax: 603.442.9331		ARCHITECT/ENGINEERS: Sigma Psi Consulting Mechanical, Electrical, Plumbing Engineers, PLLC 4 Collamer Road, Malta, NY 12020 PH (518) 581-9428 FX (518) 580-9325		Drawing Title MED GAS PLAN - WING 4B Approved Project Director 		Project Title Renovate 4B for Community Living Center (CLC) Stratton VA Medical Center Location Albany, New York Date 10-22-2014 Checked Drawn		Project Number VA 528A8-12-890 Building Number 1 Drawing Number P3.11 Dwg. 49 of 79		Office of Construction and Facilities Management Department of Veterans Affairs	
--	--	---	--	--	--	--	--	--	--	---	--	--	--	---	--