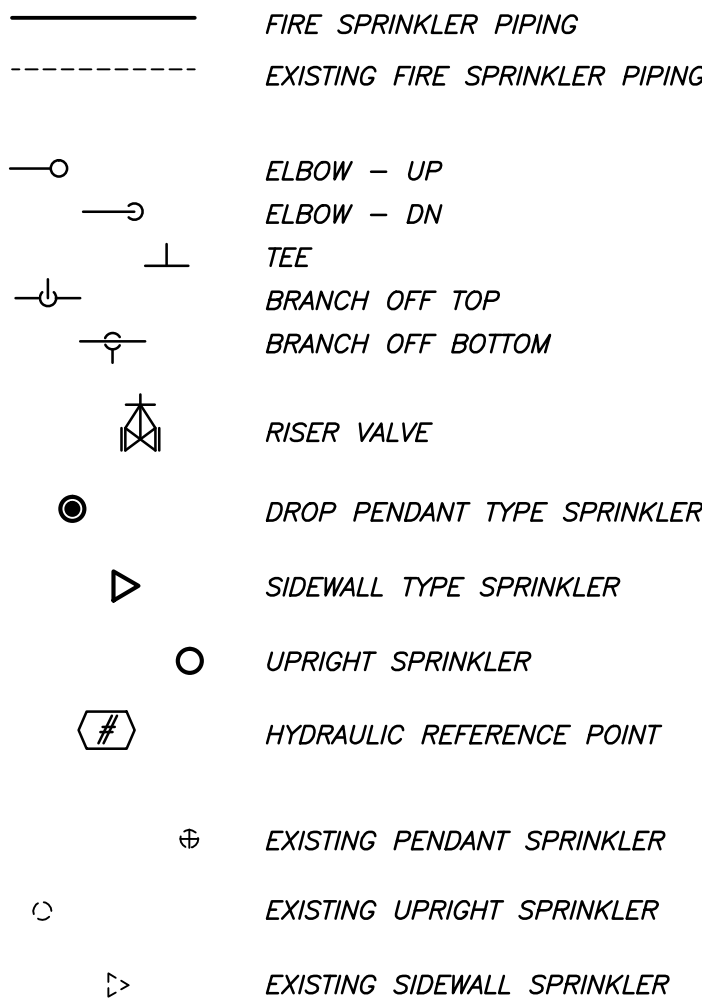


three inches = one foot
one and one half inches = one foot
one inch = one foot
three quarters inch = one foot
one half inch = one foot
three eighths inch = one foot
one quarter inch = one foot
one eighth inch = one foot

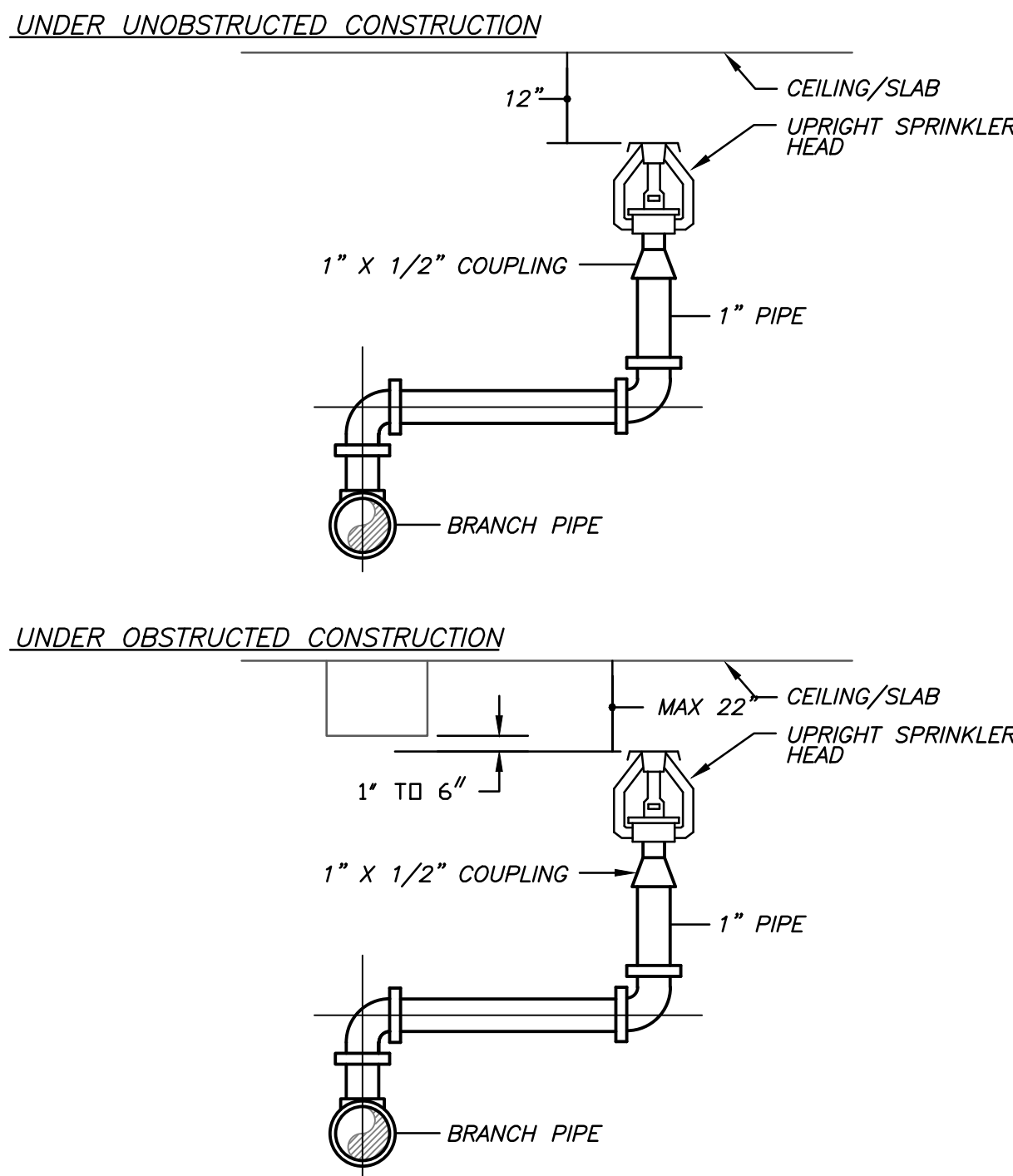
| SPRINKLER SCHEDULE | | | | | | |
|---|----------|--------|------|------|------|-------------|
| SYM | POSITION | FINISH | TEMP | K | NPT | SIN |
| ● | PEND | CHROME | 155 | 5.60 | 1/2" | TY2234 TYCD |
| ◁ | SIDE | CHROME | 155 | 5.60 | 1/2" | TY1334 TYCD |
| ○ | UPR | CHROME | 135 | 5.60 | 1/2" | TY3153 TYCD |
| NOTES: 1. COORDINATE INSTALLATION WITH WITH ACTUAL CEILING LAYOUT 2. SPRINKLERS SHALL BE FM APPROVED. 3. SPRINKLERS SHALL BE UL LISTED. | | | | | | |

LEGEND

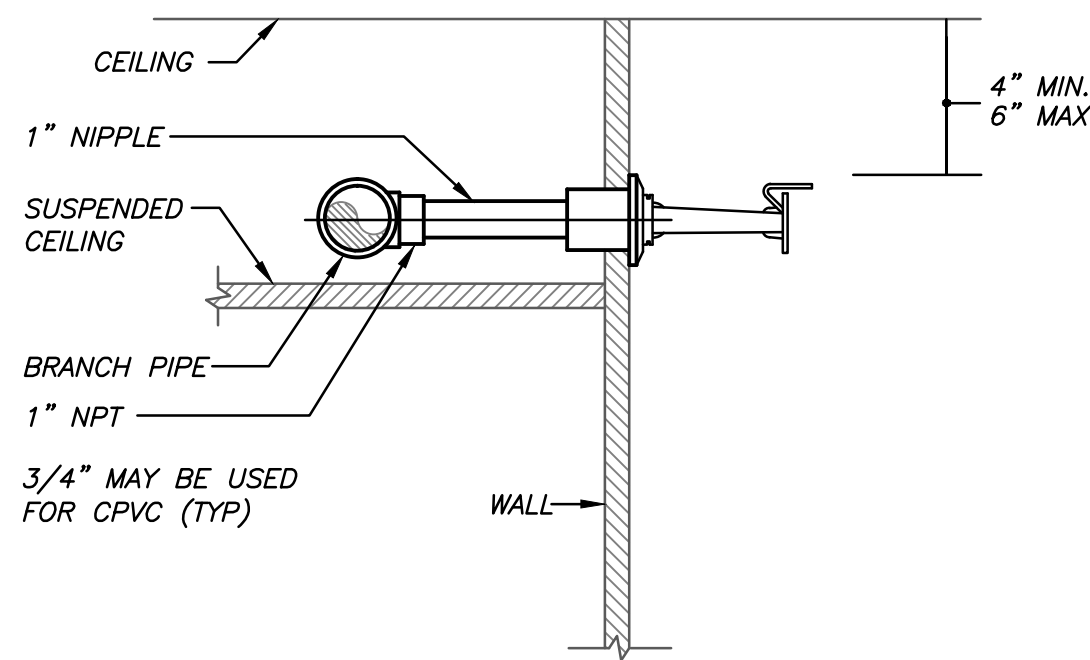


FIRE PROTECTION NOTES

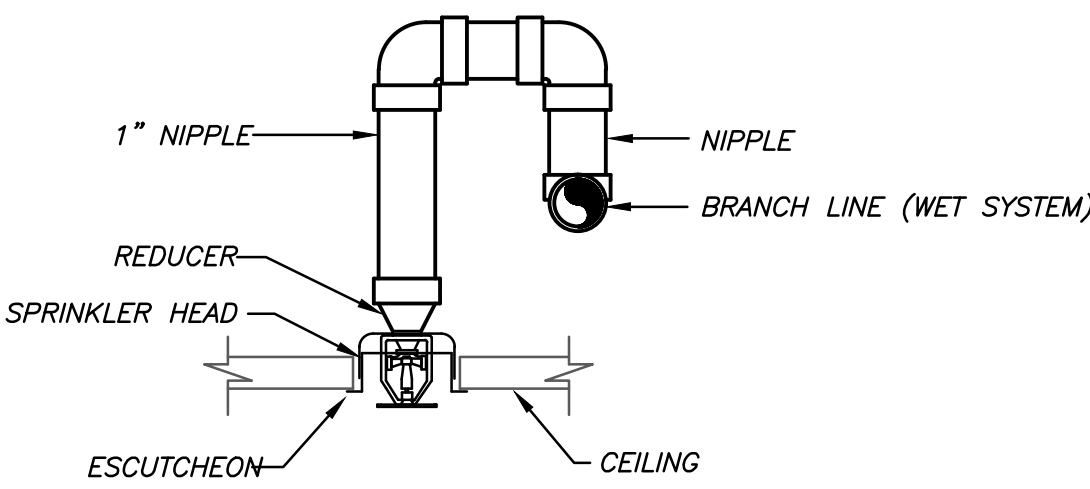
1. PROVIDE AND INSTALL NEW SPRINKLER SYSTEM TO MEET NFPA-13 AND ALL APPLICABLE BUILDING CODES, AND REQUIREMENTS OF VA SAFETY OFFICER.
2. PROVIDE A COMPLETE WET TYPE SPRINKLER SYSTEM IN ACCORDANCE WITH NFPA-13 REQUIREMENTS FOR LIGHT HAZARD AND VA STANDARDS IN ALL AREAS AS NOTED ON PLANS.
3. PROVIDE A COMPLETE WET TYPE SPRINKLER SYSTEM IN ACCORDANCE WITH NFPA-13 REQUIREMENTS FOR ORDINARY HAZARD GROUP I AND VA STANDARDS FOR ALL AREAS NOTED ON PLANS.
4. PROVIDE A PIPING SYSTEM AS REQUIRED TO PROVIDE CODE CORRECT COVERAGE.
5. IN GENERAL, SPRINKLERS SHALL BE ARRANGED FOR A MAXIMUM COVERAGE OF UNDER 225 SQUARE FEET PER HEAD FOR LIGHT HAZARD OCCUPANCIES AND 130 SQUARE FEET PER HEAD FOR ORDINARY HAZARD OCCUPANCIES, AND TO AVOID LIGHTS, DIFFUSERS, ETC. IT SHALL BE THE RESPONSIBILITY OF THE CONTRACTOR TO COORDINATE PIPING AND SPRINKLER HEADS FOR PROPER COVERAGE IN EACH AREA AND ADD ADDITIONAL HEADS TO OBTAIN PROPER COVERAGE AS REQUIRED BY VARIATIONS IN FIELD LOCATIONS AND OBSTRUCTIONS AT NO ADDITIONAL COST TO OWNER. OBTAIN FINAL APPROVED ARCHITECTURAL LAYOUTS BEFORE LAYING OUT WORKING DRAWINGS.
6. PAINT ALL SPRINKLER PIPE RED AND LABEL AT INTERVALS NOT TO EXCEED EVERY 10' TO THE DIRECTION OF WATER FLOW AND INDICATING SPRINKLER SYSTEM.
7. IN UNFINISHED ROOMS WITH NO CEILING PROVIDE UPRIGHT TYPE SPRINKLER HEADS. COORDINATE HEAD LOCATIONS WITH HVAC CONTRACTOR TO MAINTAIN ADEQUATE COVERAGE ABOVE AND BELOW LARGE DUCTWORK AND OTHER OBSTRUCTIONS AS GOVERNED BY NFPA-13. PAINT PIPE AS DIRECTED BY CONTRACTING OFFICER'S REPRESENTATIVE (COR) AND IN ACCORDANCE WITH NFPA-13.
8. CONTRACTOR SHALL SEAL ALL PIPE WALL AND FLOOR PENETRATIONS WITH EXPANDING TYPE FIRE SEALANT CAULK AND ESCUTCHEONS.
9. COORDINATE SPRINKLER PIPE RUNS WITH DUCTWORK, PLUMBING PIPING AND LIGHTS. MAINTAIN 4" CLEAR ABOVE LIGHTS. DO NOT INTERFERE WITH DUCT ACCESS DOORS.
10. PIPING SHALL BE BLACK STEEL WITH ROLL GROOVE OR THREADED JOINTS. STEEL PIPE SCHEDULE AND HANGERS SHALL BE IN ACCORDANCE WITH NFPA-13. PROVIDE DRY PIPE SPRINKLER DROPS TO AREAS SUBJECT TO FREEZING. SPRINKLERS IN AREAS WITHOUT CEILINGS SHALL HAVE ROUGH BRASS OR FACTORY STANDARD FINISH. ALL COMPONENTS SHALL BE U.L. LISTED AND FM APPROVED.
11. FLUSH, TEST AND INSPECT WATER SUPPLY AND SPRINKLER SYSTEM IN ACCORDANCE WITH NFPA-13 AND 25. COMMISSION SYSTEM IN ACCORDANCE WITH MANUFACTURER, NFPA-13, COR AND COMMISSIONING AGENT REQUIREMENTS. PROVIDE COPIES OF O&M MANUALS, CORRECTED SUBMITTALS, AS-BUILT SHOP DRAWINGS AND TWO COPIES OF NFPA-25 TO OWNER. PROVIDE SYSTEM MAINTENANCE AND OPERATION INSTRUCTION TO OWNER'S PERSONNEL. SCHEDULE ACCEPTANCE TESTING TO BE WITNESSED BY CONTRACTING OFFICER'S REPRESENTATIVE (COR). PROVIDE CONTRACTOR'S CERTIFICATION AND TESTING PAPERWORK PER NFPA 13 AND NFPA 25.
12. HYDRAULICALLY DESIGN SYSTEM PER NFPA-13 WITH MAXIMUM PIPE VELOCITY OF 20FPS AND SPRINKLER SYSTEM MAXIMUM DEMAND OF 225 GPM PLUS SYSTEM LEAKAGE AND OUTSIDE HOSE STREAM OF 250 GPM. PROVIDE A NEW FLOW TEST IN ACCORDANCE WITH NFPA-13 AND NFPA-25 PROCEDURES. SUBMIT HYDRAULIC CALCULATIONS TO CONTRACTING OFFICER'S REPRESENTATIVE (COR).
13. PREPARE SCALED WORKING DRAWINGS IN ACCORDANCE WITH NFPA-13 AND OWNER'S INSURANCE CARRIER REQUIREMENTS SHOWING LAYOUT AND DETAILS OF SPRINKLER SYSTEM. SUBMIT DRAWINGS TO CONTRACTING OFFICER'S REPRESENTATIVE (COR).
14. SPRINKLE AREAS IDENTIFIED AS LIGHT HAZARD IN ACCORDANCE WITH NFPA-13 LIGHT HAZARD, 0.10 GPM/SF DENSITY OVER 1500SF FIRE AREA.
15. SPRINKLE AREAS IDENTIFIED AS ORDINARY HAZARD IN ACCORDANCE WITH NFPA-13 ORDINARY HAZARD GROUP-1, 0.15 GPM/SF DENSITY OVER 1500SF FIRE AREA.
16. PROVIDE ADDITIONAL SPRINKLER HEADS AS REQUIRED BY CEILING CONFIGURATION TO MEET REQUIREMENTS OF NFPA 13.
17. PROVIDE TEN (10) ADDITIONAL SPARE SPRINKLER HEADS TO BE TURNED OVER TO THE CONTRACTING OFFICER'S REPRESENTATIVE (COR).
18. ALL EXISTING DEVICES SHALL BE TURNED OVER TO THE MEDICAL CENTER.
19. SEAL SMOKE PARTITION PENETRATIONS SMOKE TIGHT WITH APPROVED SEALANT. SEAL FIRE RATED AND SMOKE/FIRE RATED PENETRATIONS WITH APPROVED SEALANT. SEE ARCHITECTURAL LIFE SAFETY PLAN FOR LOCATIONS OF SMOKE AND FIRE RATED PARTITIONS AND BARRIERS.



3 UPRIGHT SPRINKLER HEAD DETAIL
SCALE: NOT TO SCALE



2 SIDEWALL SPRINKLER HEAD DETAIL
SCALE: NOT TO SCALE



1 RECESSED SPRINKLER HEAD DETAIL
NOT TO SCALE

| | | | | | | | | | | | | | | | |
|--|--|--|--|---|--|---|--|---|--|--|--|--|--|--|--|
| CONSULTANTS: Hyman Hayes 6 WEMBLEY COURT, ALBANY, NEW YORK 12205 (518) 452-3470 1511 Route 22 - Suite C-24 Brewster, New York 10509 p: 845.278.7710 f: 845.278.7750 adelaidelc.com | | ENGINEERING VENTURES PC 208 Flynn Avenue, Suite 2A Burlington, VT 05401 tel: 802.863.6225 • fax: 802.863.6366 85 Mechanic Street, Suite 350A, Lebanon, NH 03766 tel: 603.442.9339 • fax: 603.442.9331 | |  | | ARCHITECT/ENGINEERS: Sigma Psi Consulting Mechanical, Electrical, Plumbing Engineers, PLLC 4 Collamer Road, Malta, NY 12020 PH (518) 581-9428 FX (518) 580-9325 | | Drawing Title FIRE SPRINKLER NOTES, LEGEND + DETAILS Approved Project Director  | | Project Title Renovate 4A for Community Living Center (CLC) Stratton VA Medical Center Location Albany, New York Date 10-22-2014 Checked Drawn | | Project Number VA 528A8-12-801 Building Number 1 Drawing Number F0.1 Dwg. 59 of 17 | | Office of Construction and Facilities Management Department of Veterans Affairs | |
|--|--|--|--|---|--|---|--|---|--|--|--|--|--|--|--|