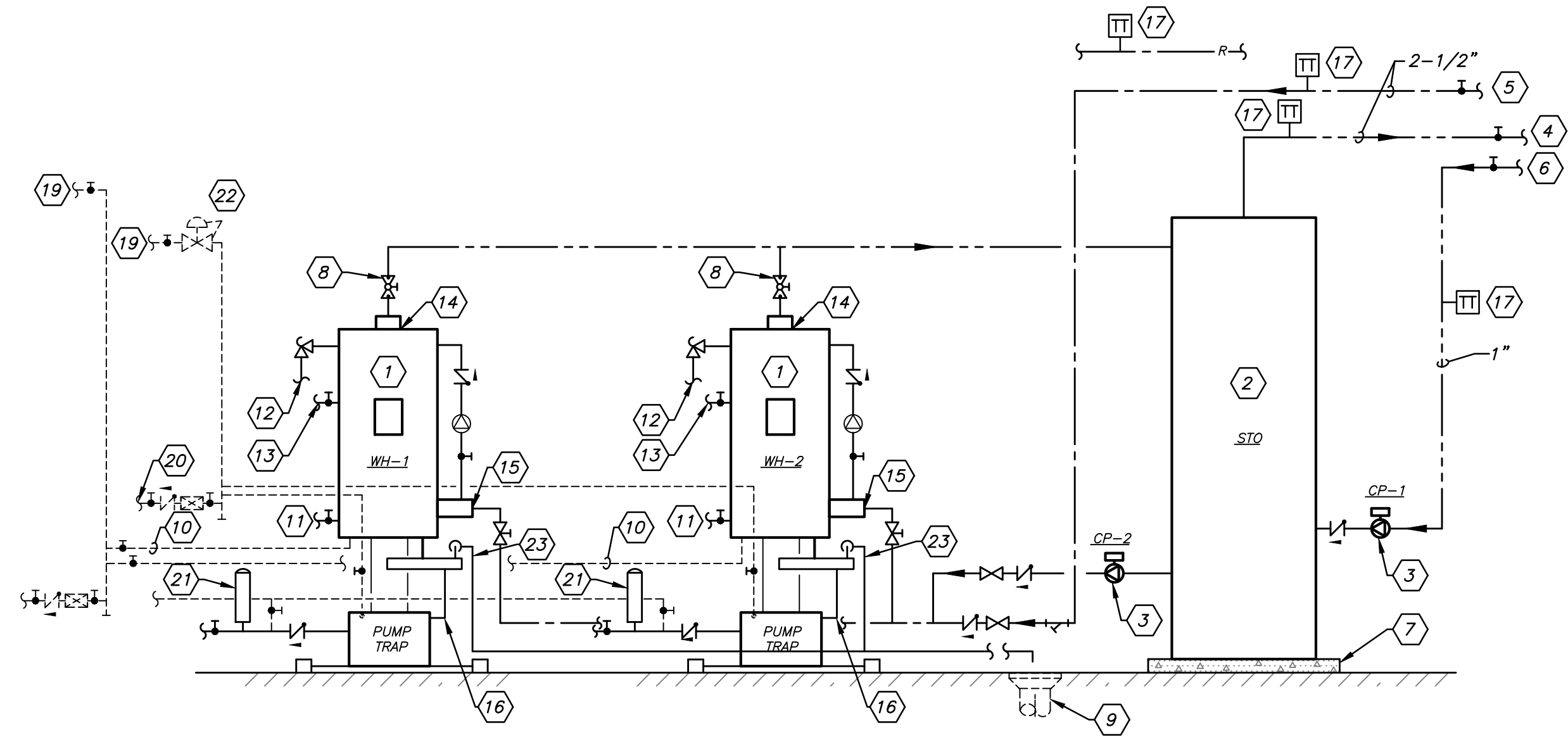
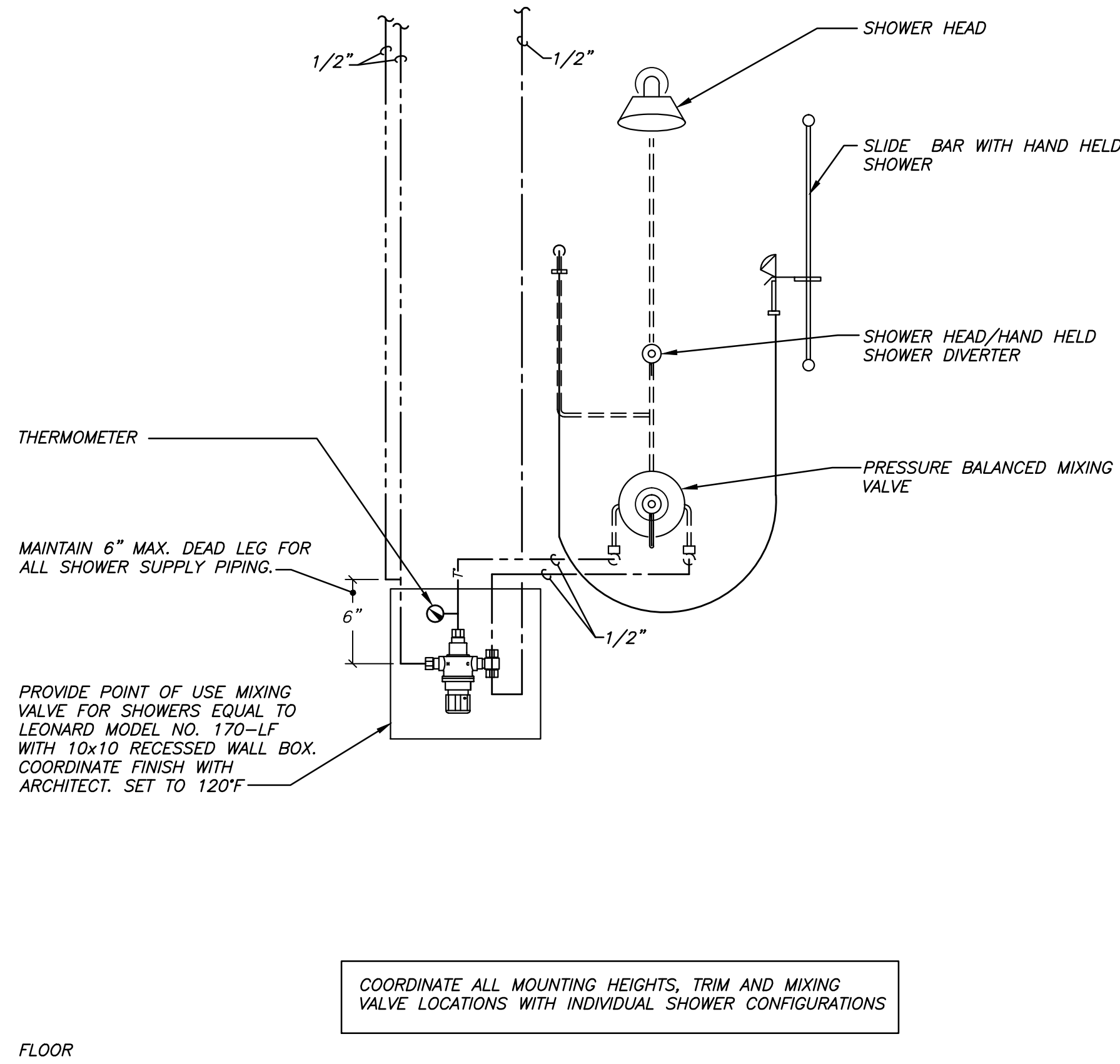


three inches = one foot
one and one half inches = one foot
one inch = one foot
three quarters inch = one foot
one half inch = one foot
three eighths inch = one foot
one quarter inch = one foot
one eighth inch = one foot

- 1 STEAM FIRED WATER HEATER - SEE SCHEDULE
- 2 HOT WATER STORAGE TANK - SEE SCHEDULE
- 3 CIRCULATING PUMP - SEE SCHEDULE
- 4 HOT WATER TO 4TH FLOOR CLC
- 5 COLD WATER PIPING
- 6 HOT WATER RETURN PIPING
- 7 CONCRETE HOUSEKEEPING PAD 4" HIGH
- 8 CIRCUIT SETTER (TYP.)
- 9 EXISTING FLOOR DRAIN
- 10 STEAM SUPPLY PROVIDED BY MECHANICAL CONTRACTOR.
- 11 PIPE TO FLOOR DRAIN
- 12 T&P RELIEF VALVE - PIPE TO FLOOR DRAIN
- 13 HIGH TEMP DRAIN SOLENOID VALVE - PIPE TO FLOOR DRAIN
- 14 2" HW - OUTLET
- 15 2" CW - INLET
- 16 1-1/2" CONDENSATE OUTLET - PIPE TO PUMP TRAP
- 17 DDC SENSOR BY MC (TYP.)
- 18 PUMPED LPR BY MC.
- 19 MPS BY MC.
- 20 MPR BY MC.
- 21 4"x18" THERMAL EXPANSION PIPE.
- 22 25 PSIG OUTLET.
- 23 AIR VENT WITH CHECK VALVE PIPE TO FLOOR DRAIN

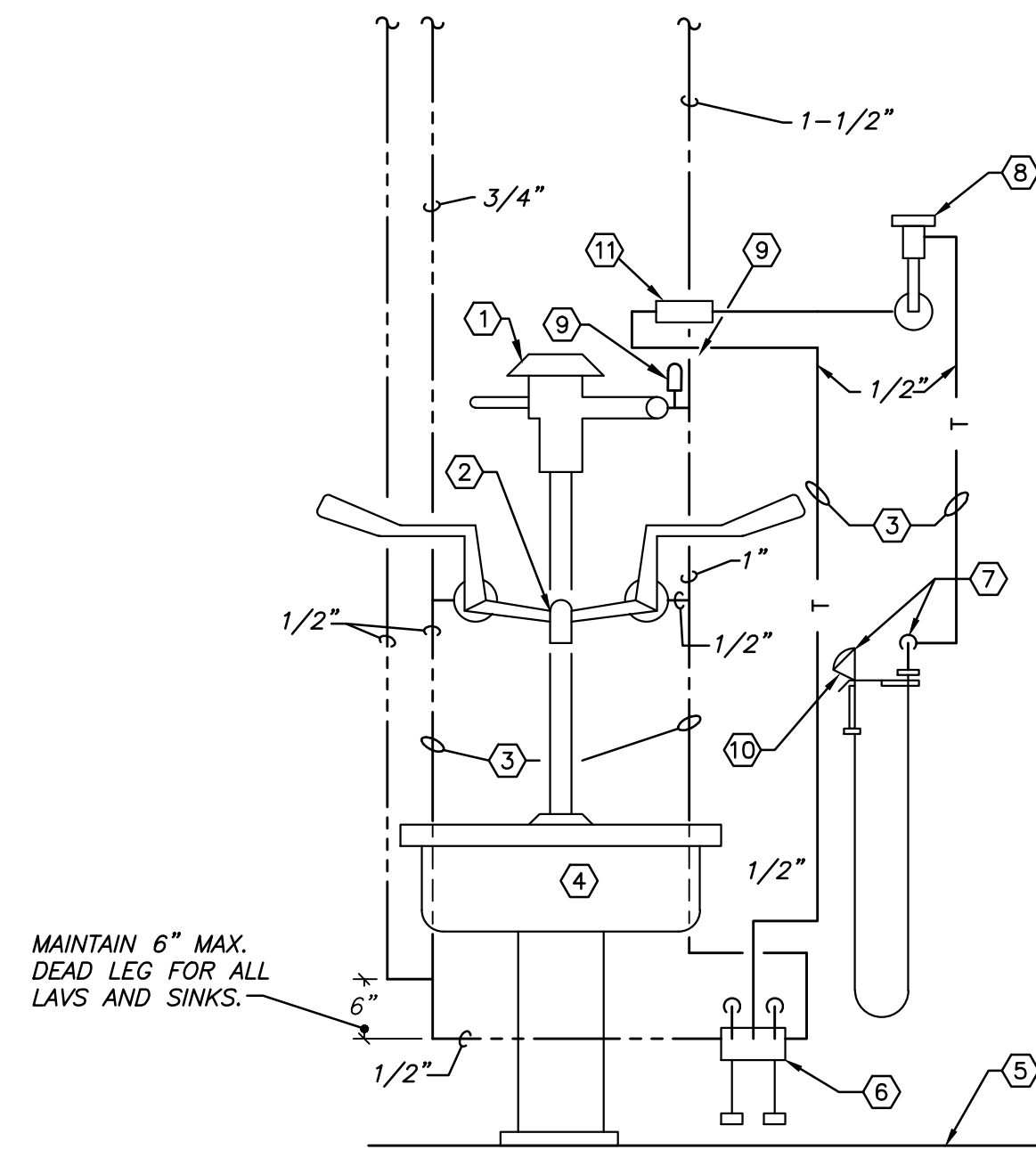


7 STEAM FIRED DUAL UNIT PIPING W/STORAGE TANK
P0.3 NO SCALE

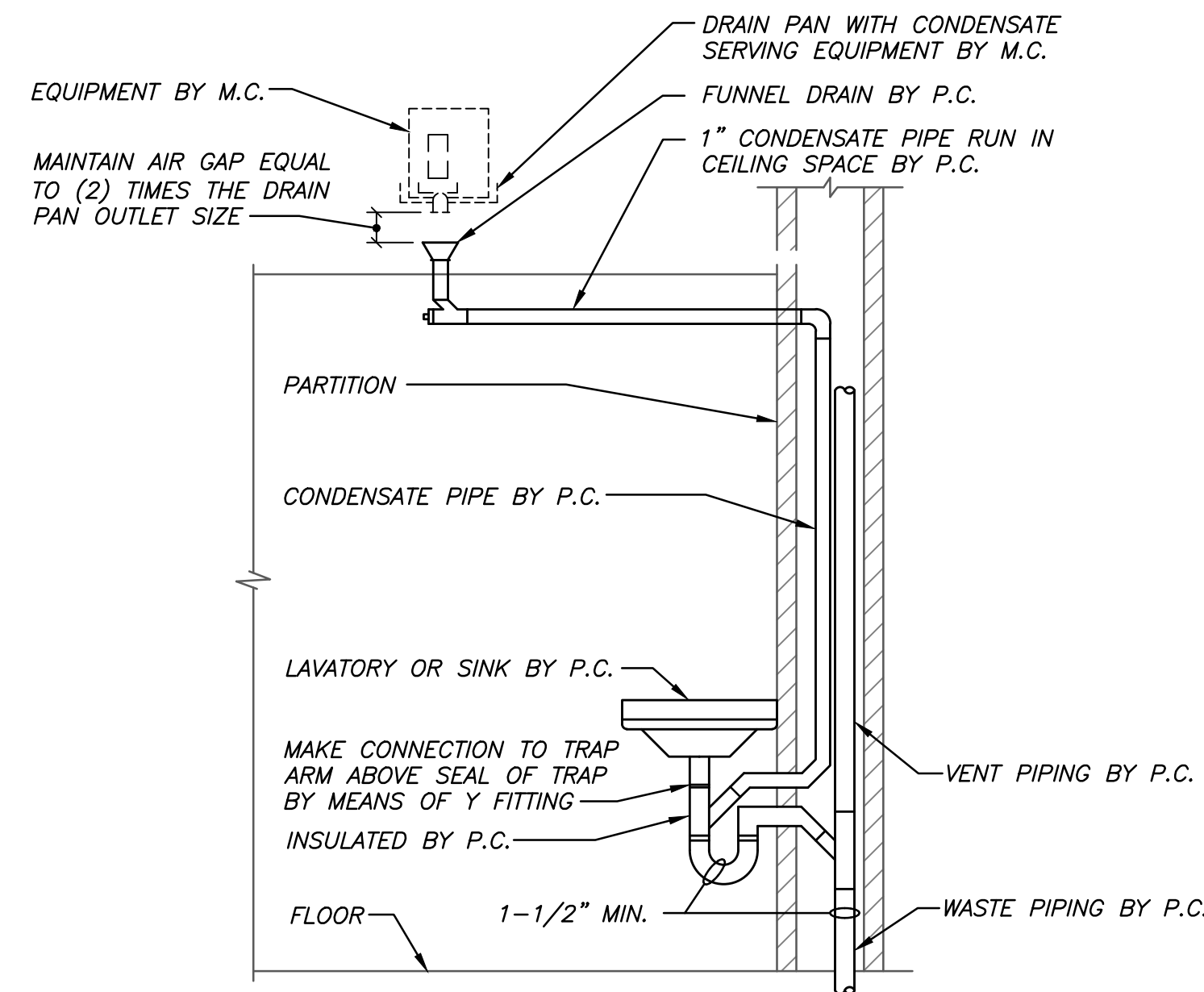


6 SHOWER PIPING SCHEMATIC
P0.3 NO SCALE

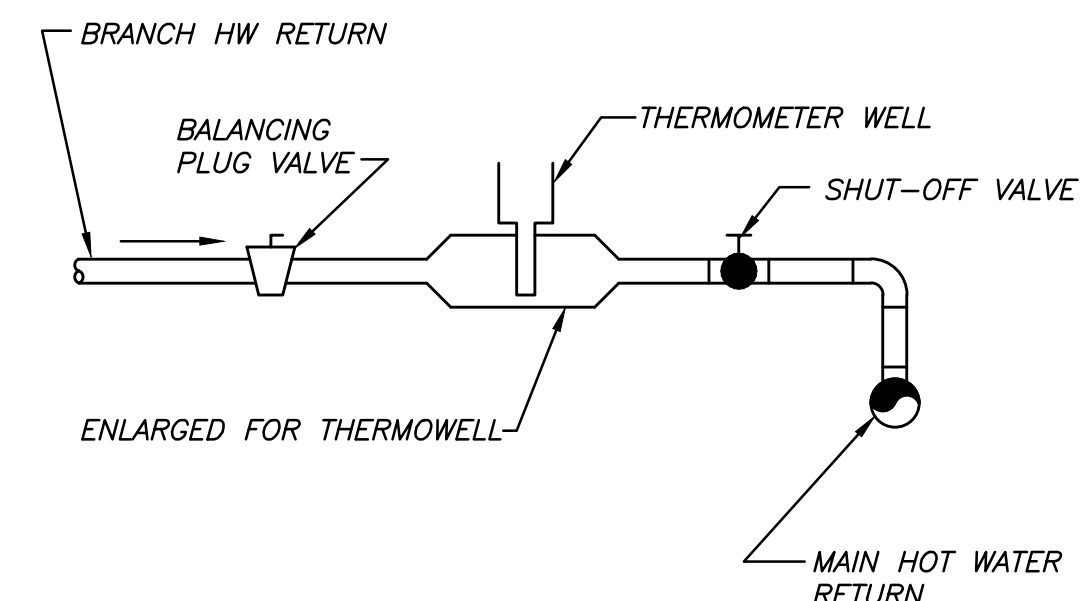
- 1 FLUSH VALVE
- 2 SPOUT TYPE FAUCET WITH VACUUM BREAKER
- 3 PIPING IN WALL
- 4 FLUSHING RIM SINK (FRS)
- 5 FLOOR
- 6 DUAL FOOT PEDAL TYPE BEDPAN WASHER VALVE
- 7 BEDPAN WASHER ASSEMBLY
- 8 EXPOSED ON WALL CHROME PLATED VACUUM BREAKER
- 9 SHOCK ARRESTOR
- 10 ROSEBUD SPRAY HEAD - NO VALVE
- 11 BACKFLOW PREVENTER WATTS 90-PROVIDE 10"x10" ACCESS DOOR



5 ELEVATION OF FRS
P0.3 NO SCALE

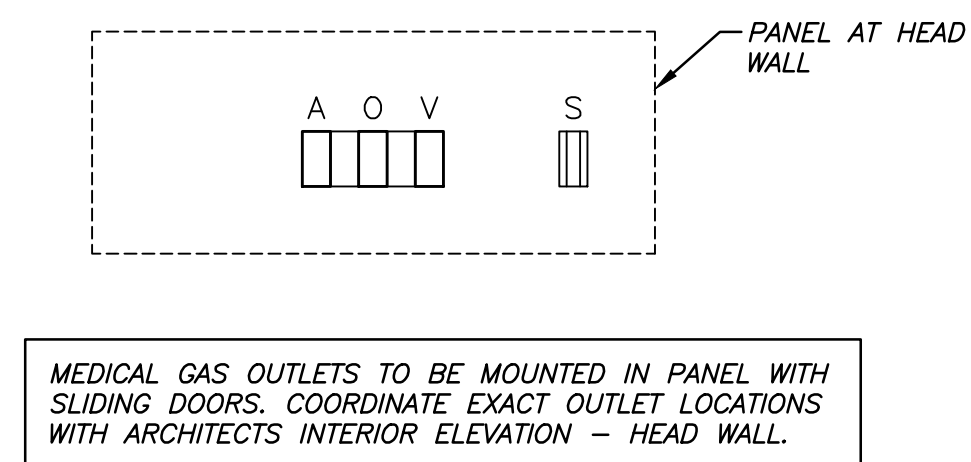


4 CONDENSATE DRAIN PIPING
P0.3 NO SCALE

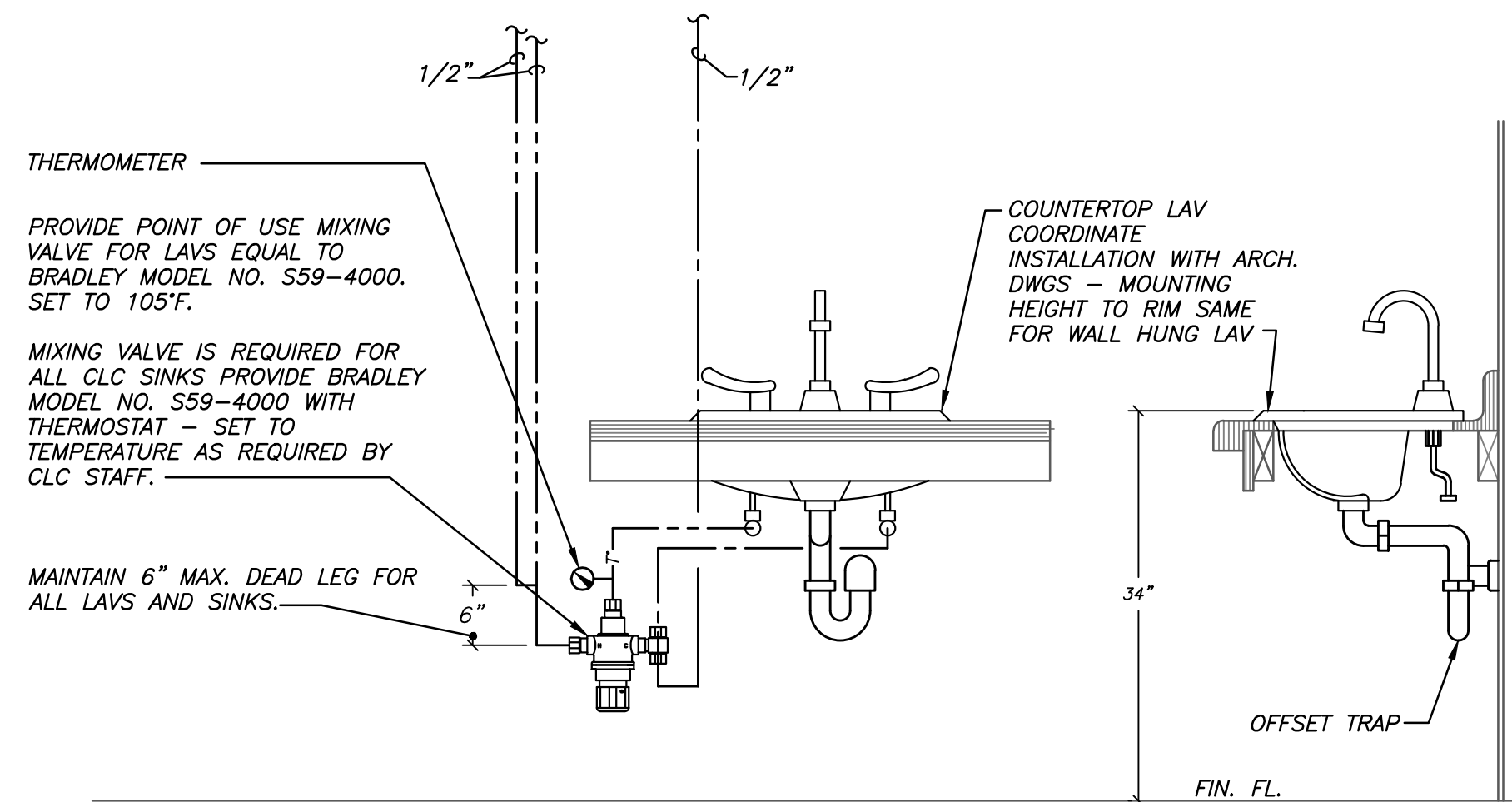


3 TYPICAL HW BALANCING STATION
P0.3 NO SCALE

- LEGEND**
- 0 - MEDICAL OXYGEN
 - A - MEDICAL AIR
 - V - MEDICAL VACUUM
 - S - MEDICAL VACUUM OUTLET
 - SLIDE
 - Medical OXYGEN OUTLET
 - MEDICAL AIR OUTLET
 - SPACE



2 MEDICAL GAS OUTLET DETAIL
P0.3 NO SCALE



1 HAND WASHING LAV/SK SCHEMATIC
P0.3 NO SCALE

CONSULTANTS:		ARCHITECT/ENGINEERS:		Drawing Title		Project Title		Project Number		Office of Construction and Facilities Management	
Hyman Hayes		Sigma Psi Consulting		PLUMBING DETAILS		Renovate 4A for Community Living Center (CLC)		VA 528A8-12-801		Department of Veterans Affairs	
6 WENDLEY COURT, ALBANY, NEW YORK 12205		4 Collamer Road, Malta, NY 12020		Approved Project Director		Stratton VA Medical Center		Building Number 1			
1511 Route 22 - Suite C-24		PH (518) 581-9428 FX (518) 580-9325				Albany, New York		Drawing Number			
4/30/15						Date		P0.3			
10/22/14						Checked		Dwg 70 of 17			
Date						Drawn					