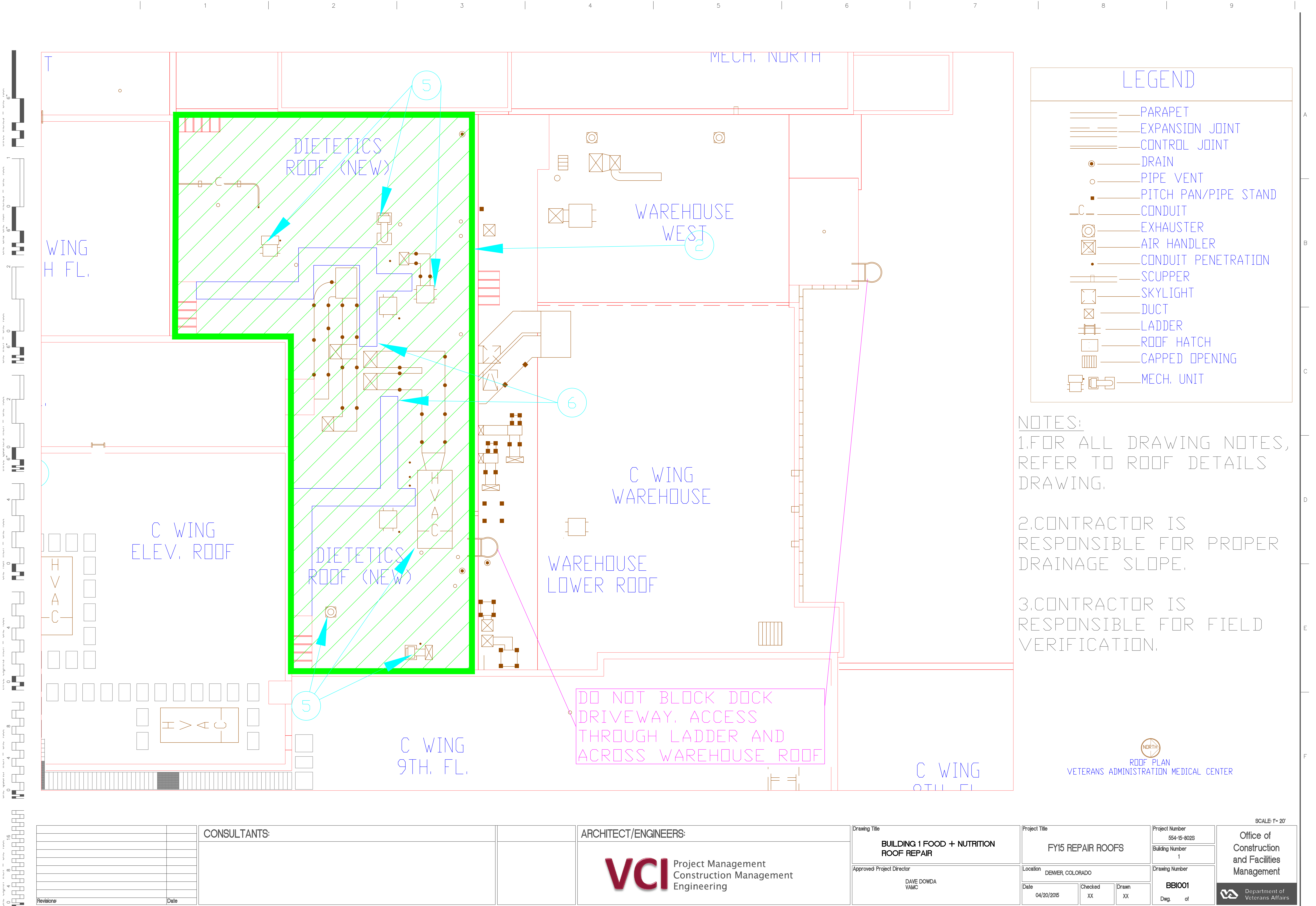
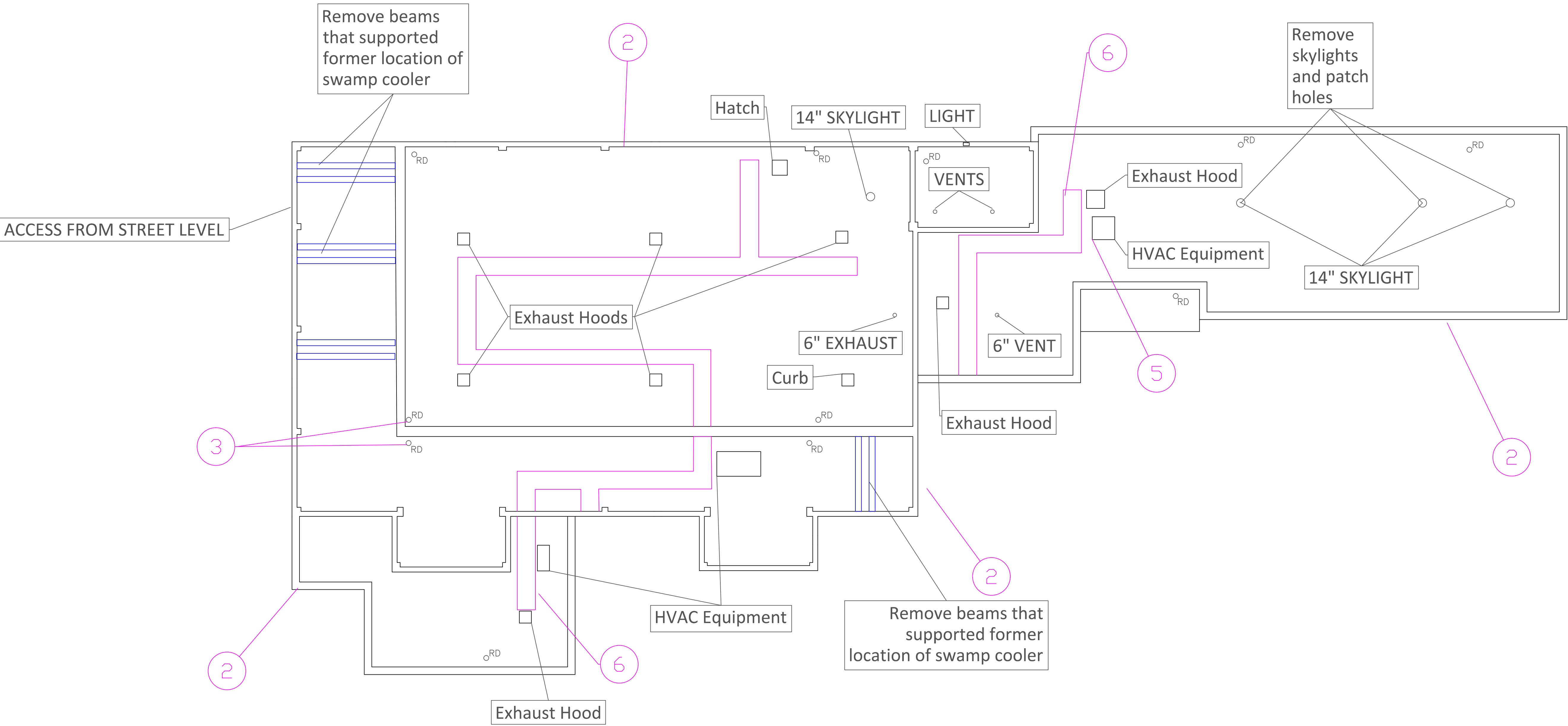
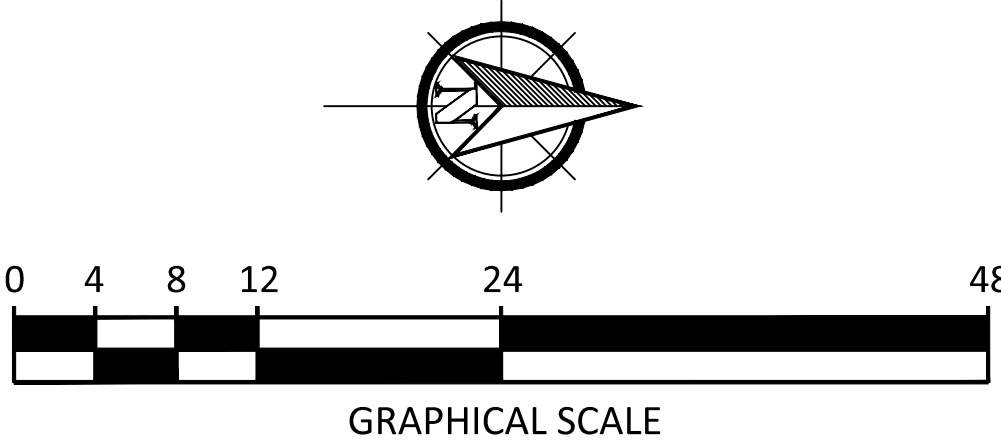
[illegible]



three inches = one foot
one and one half inches = one foot
one inch = one foot
three quarters inch = one foot
one half inch = one foot
three eighths inch = one foot
one quarter inch = one foot
one eighth inch = one foot



BUILDING #7 - ROOF



- NOTES:
- 1.FOR ALL DRAWING NOTES, REFER TO ROOF DETAILS DRAWING
- 2.CONTRACTOR IS RESPONSIBLE FOR PROPER DRAINAGE SLOPE.
- 3.CONTRACTOR IS RESPONSIBLE FOR FIELD VERIFICATION.

		CONSULTANTS:		ARCHITECT/ENGINEERS:	<div><div>VCI</div><div>Project Management Construction Management Engineering</div></div>	Drawing Title	Project Title		Project Number		Office of Construction and Facilities Management
						BUILDING #7 - ROOF	ROOF REPAIR FY15		554-15-802S		
									Building Number		
									7		
									Drawing Number		
									BB1003		
										Department of Veterans Affairs	
			Approved: Project Director	Location		Date		Checked	Drawn		
			DAVE DOWDA VAMC DENVER	DENVER, COLORADO		03/23/2015		XX	XX		



1. ALL DETAILS SHOWN ARE SUPPLEMENTAL TO MANUFACTURERS SPECIFICATIONS AND ARE REFLECTION OF CURRENT CONDITIONS BASED ON ORIGINAL DESIGN. CONTRACTORS IS TO FIELD VERIFY.
2. ALL SEAMS , CONNECTIONS, AND CORNERS ARE TO BE MECHANICALLY HEAT WELDED UNLESS CONDITIONS WARRANT OTHERWISE. ALL MANUAL WELDS WILL BE 2" MINIMUM.
3. ALL PIPE PENETRATIONS, SCUPPERS, AND CORNERS ARE TO BE PREFABRICATED PREMOLDED TPO.

VA FORM 08-6231