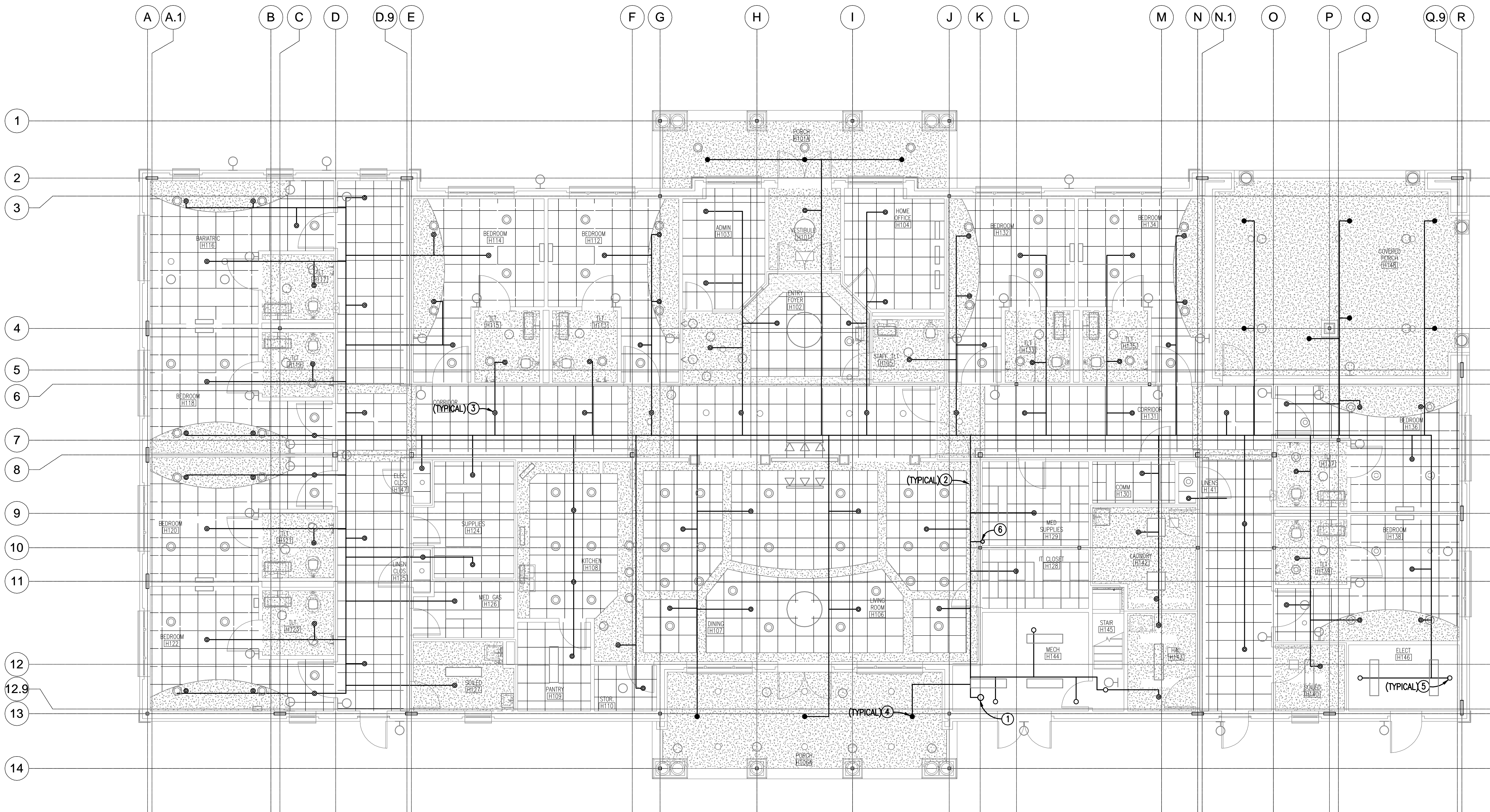
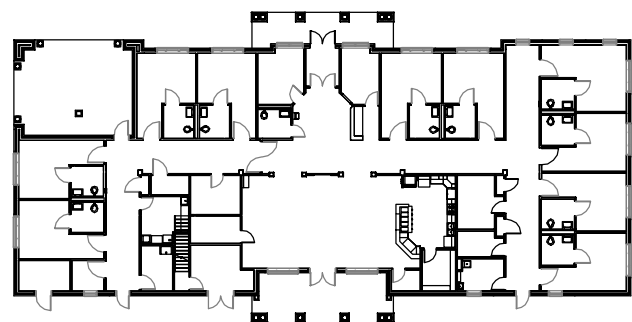


- NOTES:
(THIS SHEET ONLY)
1. INSTALL FIRE PROTECTION ENTRANCE RISER AT THIS LOCATION IN ACCORDANCE WITH NFPA 13. REFER TO DETAILS ON SHEET F501.
 2. ALL SPRINKLER PIPING SHALL BE SUPPORTED FROM BUILDING STRUCTURE. REFER TO DETAILS ON SHEET F501.
 3. INSTALL PENDENT SPRINKLER HEADS IN FINISHED CEILINGS. HEADS SHALL BE IN CENTER OF TILE IN CEILINGS WITH ACOUSTICAL TILES. HEADS IN GYPSUM BOARD CEILINGS SHALL BE UNIFORMLY SPACED IN ACCORDANCE WITH NFPA 13. REFER TO DETAILS ON SHEET F501.
 4. INSTALL DRY PENDENT SPRINKLER HEADS IN ALL AREAS THAT ARE EXPOSED TO UNCONDITIONED SPACE. REFER TO DETAILS ON SHEET F501.
 5. INSTALL UPRIGHT SPRINKLER HEADS IN ALL AREAS WITH NO CEILING OR OPEN TO DECK ABOVE. REFER TO DETAILS ON SHEET F501.
 6. ROUTE SUPPLY PIPING UP TO MEZZANINE AT THIS APPROXIMATE LOCATION. FOR PIPING CONTINUATION REFER TO DRAWING FX102.



10 BED HOME
FLOOR PLAN - FIRE PROTECTION

SCALE: 3/16" = 1'-0"



PLAN ORIENTATION TO BE CONSTRUCTED IN THIS PROJECT

NOTE: ARCHITECTURAL, STRUCTURAL, MECHANICAL, ELECTRICAL, PLUMBING AND FIRE PROTECTION FLOOR PLAN DRAWINGS OF THE BUILDING ENVELOPE AND INTERIOR FOR THE 10 BEDROOM HOUSES ARE DRAWN OPPOSITE HAND (MIRROR IMAGE) OF THE REQUIRED ORIENTATION. REFERENCE THIS KEY PLAN AND/OR CIVIL AND LANDSCAPE DRAWINGS FOR THE PROPER BUILDING ORIENTATION AND ASSOCIATED WALKS, DRIVES, PARKING AND SITE UTILITIES.

BUILDING ORIENTATION KEY PLAN

FINAL SUBMITTAL

OFFICE OF
CONSTRUCTION
AND FACILITIES
MANAGEMENT

Department of
Veterans Affairs

CONSULTANTS:

CLARK•NEXSEN

440 MARTIN LUTHER KING, JR. BLVD
MACON, GEORGIA 31201

478-743-8415 FAX 478-743-8239
WWW.CLARKNEXSEN.COM
CLARK NEXSEN LICENSE #C-1028

ARCHITECT/ENGINEERS:

TOLAND
MIZELL
MOLNAR

590 MEANS ST NW ATLANTA GA 30318

Drawing Title:
10 BED HOME
FLOOR PLAN
FIRE PROTECTION

Approved: Project Director

Project Title:
FAYETTEVILLE CLC
PROJECT ONE

Location:
FAYETTEVILLE, NC

Date:
February 5, 2015

Checked:
RC

Drawn:
PW

Project Number:
565-131

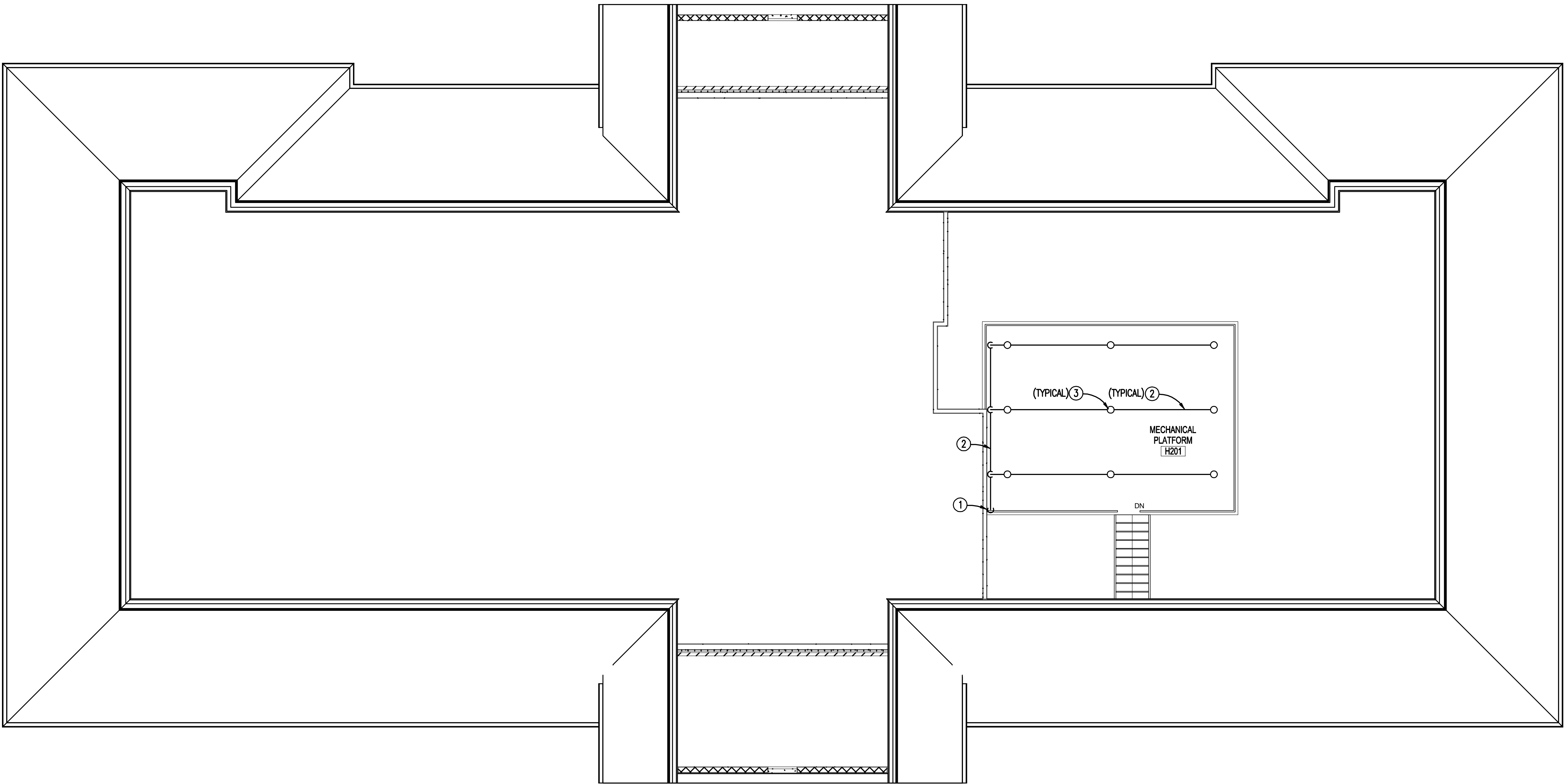
Building Number:
-

Drawing Number:
FX101

Dwg. of

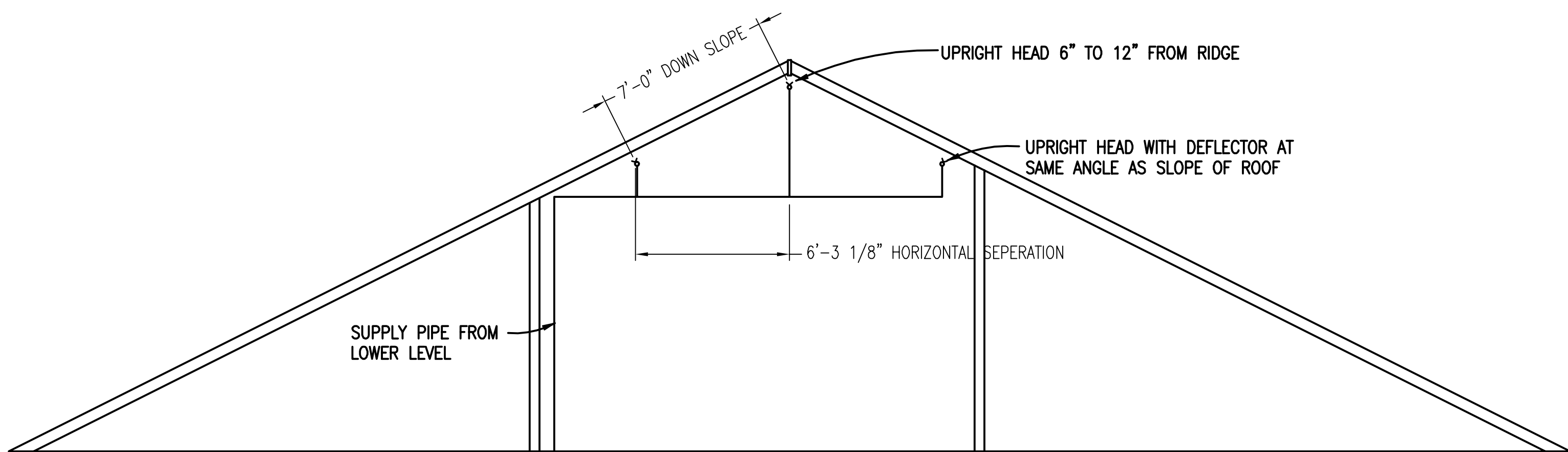
NOTES:
(THIS SHEET ONLY)

- ① ROUTE SUPPLY FROM LOWER LEVEL AT THIS APPROXIMATE LOCATION. FOR PIPING CONTINUATION REFER TO DRAWING FX101.
- ② ROUTE SPRINKLER PIPING AS INDICATED. ALL PIPING SHALL BE SUPPORTED FROM BUILDING STRUCTURE IN ACCORDANCE WITH NFPA 13. REFER TO DETAILS ON SHEET F501.
- ③ INSTALL UPRIGHT SPRINKLER HEADS THROUGHOUT THE MEZZANINE IN ACCORDANCE WITH NFPA 13. THE DEFLECTOR OF ALL UPRIGHT HEADS SHALL BE SET AT THE SAME ANGLE AS ROOF. REFER TO DETAILS ON SHEET F501.



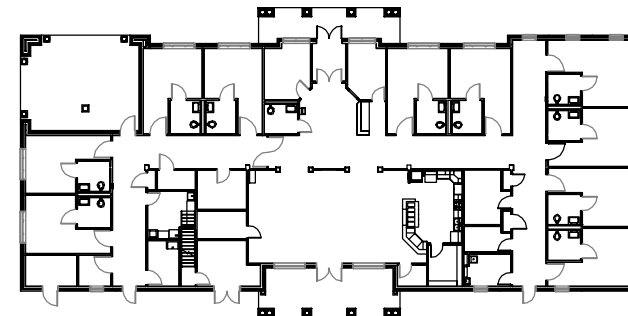
10 BED HOME
ATTIC FLOOR PLAN - FIRE PROTECTION

SCALE: 3/16" = 1'-0"



10 BED HOME
ATTIC ELEVATION - FIRE PROTECTION

SCALE: NTS



PLAN ORIENTATION TO BE CONSTRUCTED IN THIS PROJECT

NOTE : ARCHITECTURAL, STRUCTURAL, MECHANICAL, ELECTRICAL, PLUMBING AND FIRE PROTECTION FLOOR PLAN DRAWINGS OF THE BUILDING ENVELOPE AND INTERIOR FOR THE 10 BEDROOM HOUSES ARE DRAWN OPPOSITE HAND (MIRROR IMAGE) OF THE REQUIRED ORIENTATION. REFERENCE THIS KEY PLAN AND/OR CIVIL AND LANDSCAPE DRAWINGS FOR THE PROPER BUILDING ORIENTATION AND ASSOCIATED WALKS, DRIVES, PARKING AND SITE UTILITIES.

BUILDING ORIENTATION KEY PLAN

FINAL SUBMITTAL

OFFICE OF
CONSTRUCTION
AND FACILITIES
MANAGEMENT

Department of
Veterans Affairs

CONSULTANTS:

CLARK♦NEXSEN

440 MARTIN LUTHER KING, JR. BLVD
MACON, GEORGIA 31201

478-743-8415 FAX 478-743-8239
WWW.CLARKNEXSEN.COM
CLARK NEXSEN LICENSE #C-1028

ARCHITECT/ENGINEERS:

TOLAND
MIZELL
MOLNAR

590 MEANS ST NW ATLANTA GA 30318

Drawing Title:

10 BED HOME
ATTIC FLOOR PLAN
FIRE PROTECTION

Approved: Project Director

Project Title:

FAYETTEVILLE CLC
PROJECT ONE

Date:

February 5, 2015

Checked:

RC

Drawn:

PW

Project Number:

565-131

Building Number:

.

Drawing Number:

FX102

Dwg. of .

