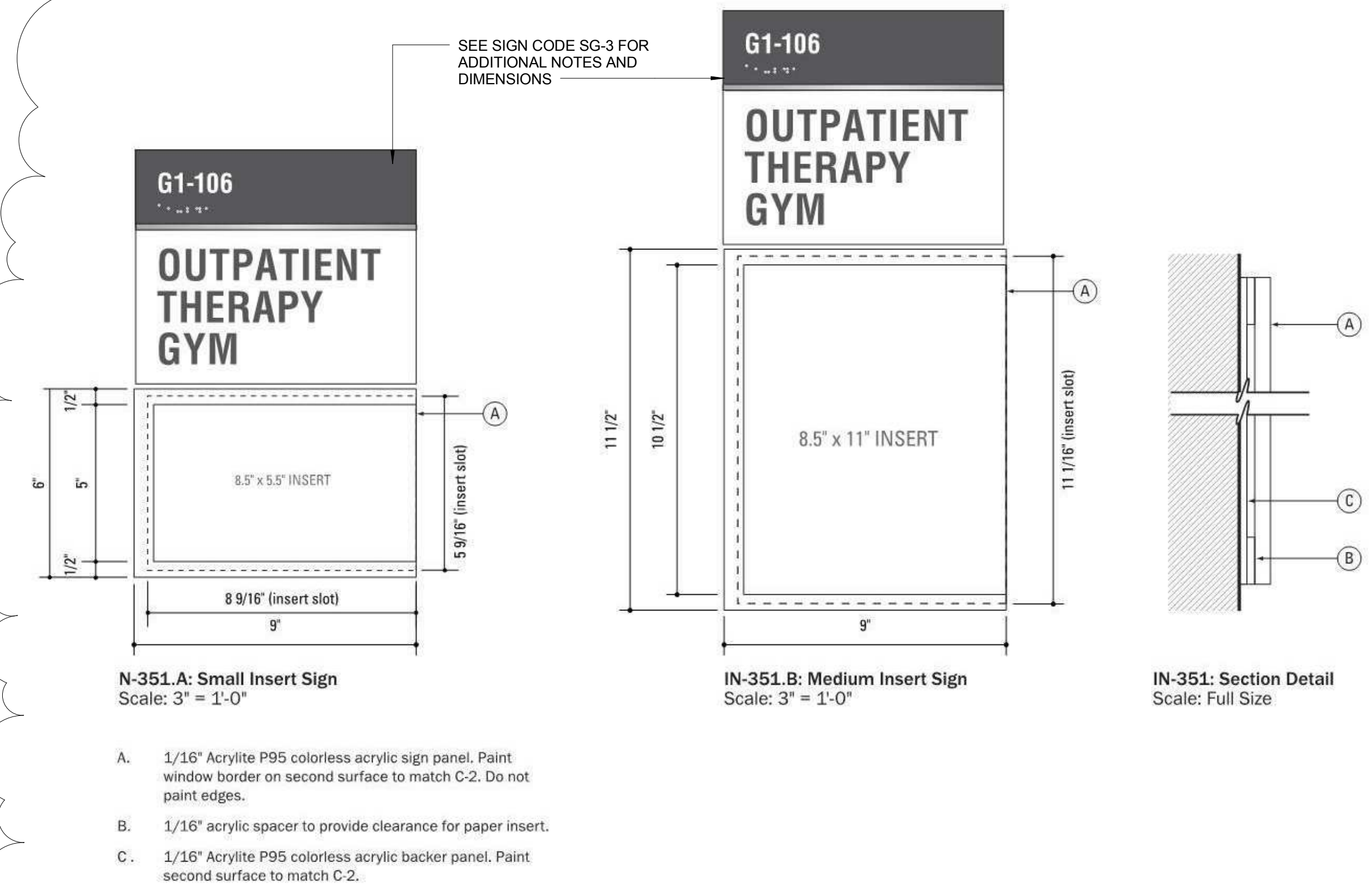


three inches = one foot
one and one half inches = one foot
one inch = one foot
three quarters inch = one foot
one half inch = one foot
three eighths inch = one foot
one quarter inch = one foot
one eighth inch = one foot

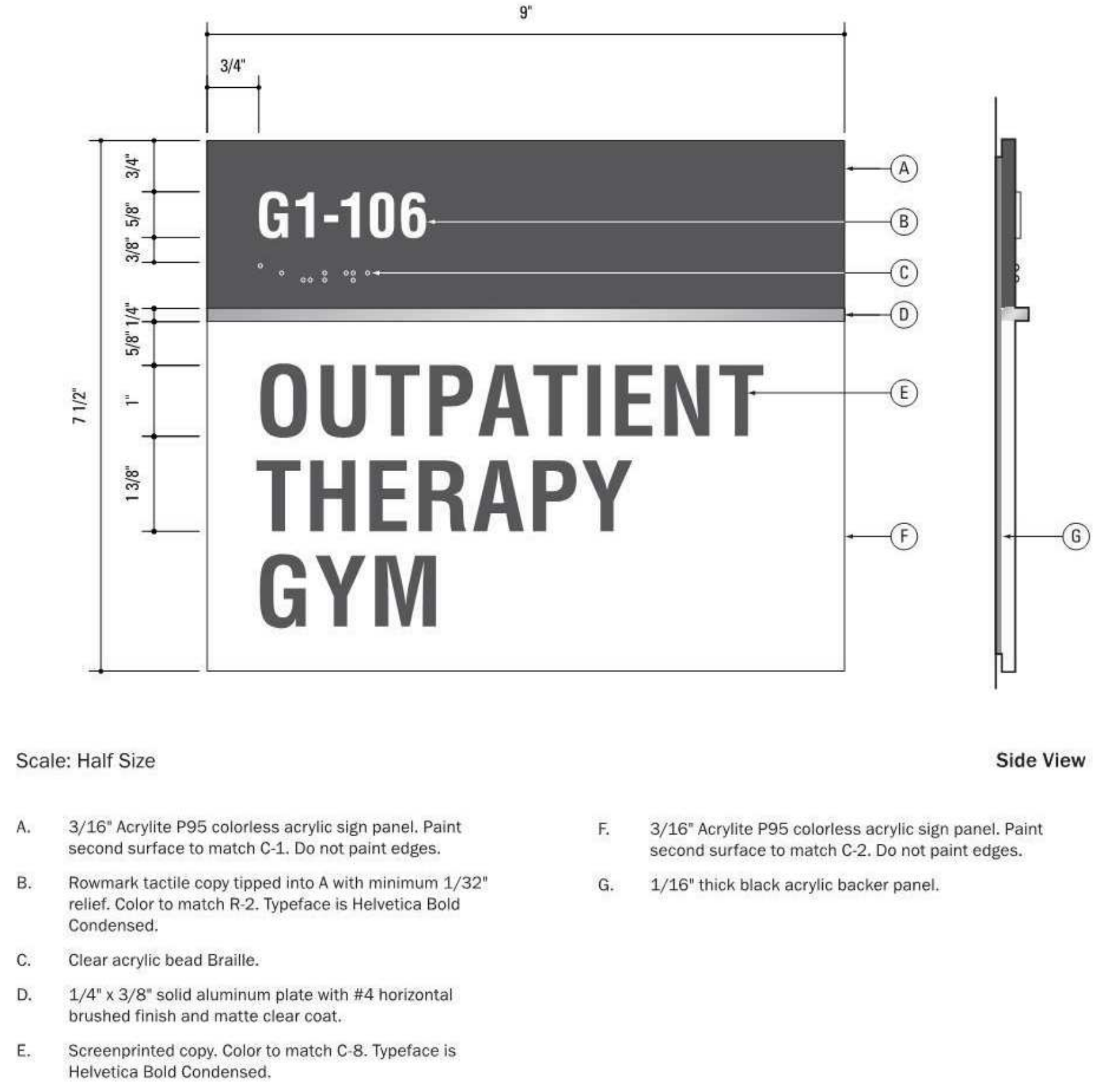


- N-351.A: Small Insert Sign**
Scale: 3" = 1'-0"
- A. 1/16" Acrylite P95 colorless acrylic sign panel. Paint window border on second surface to match C-2. Do not paint edges.
 - B. 1/16" acrylic spacer to provide clearance for paper insert.
 - C. 1/16" Acrylite P95 colorless acrylic backer panel. Paint second surface to match C-2.

IN-351: Insert signs

Application:

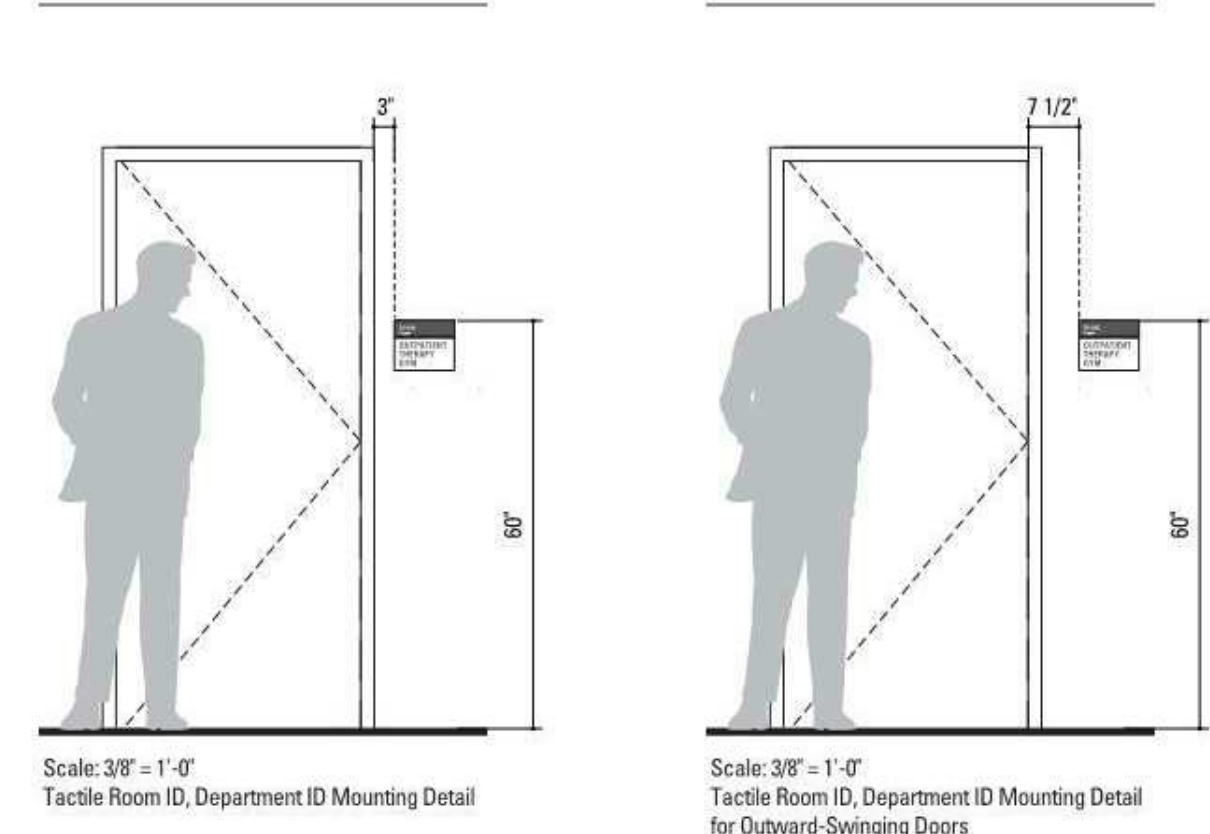
The inserts signs can be used in conjunction with sign type IN-301.3 or they can stand alone. It is recommended to choose the appropriate size insert for the room's function. Short messages such as names should use the smallest insert. It is also advised to use the templates provided by the designer for these signs to create consistency throughout the sign program. 351.1 and 351.B (shown on this page) are recommended as preferred options.



IN-300: Room Identification and Description

Application:

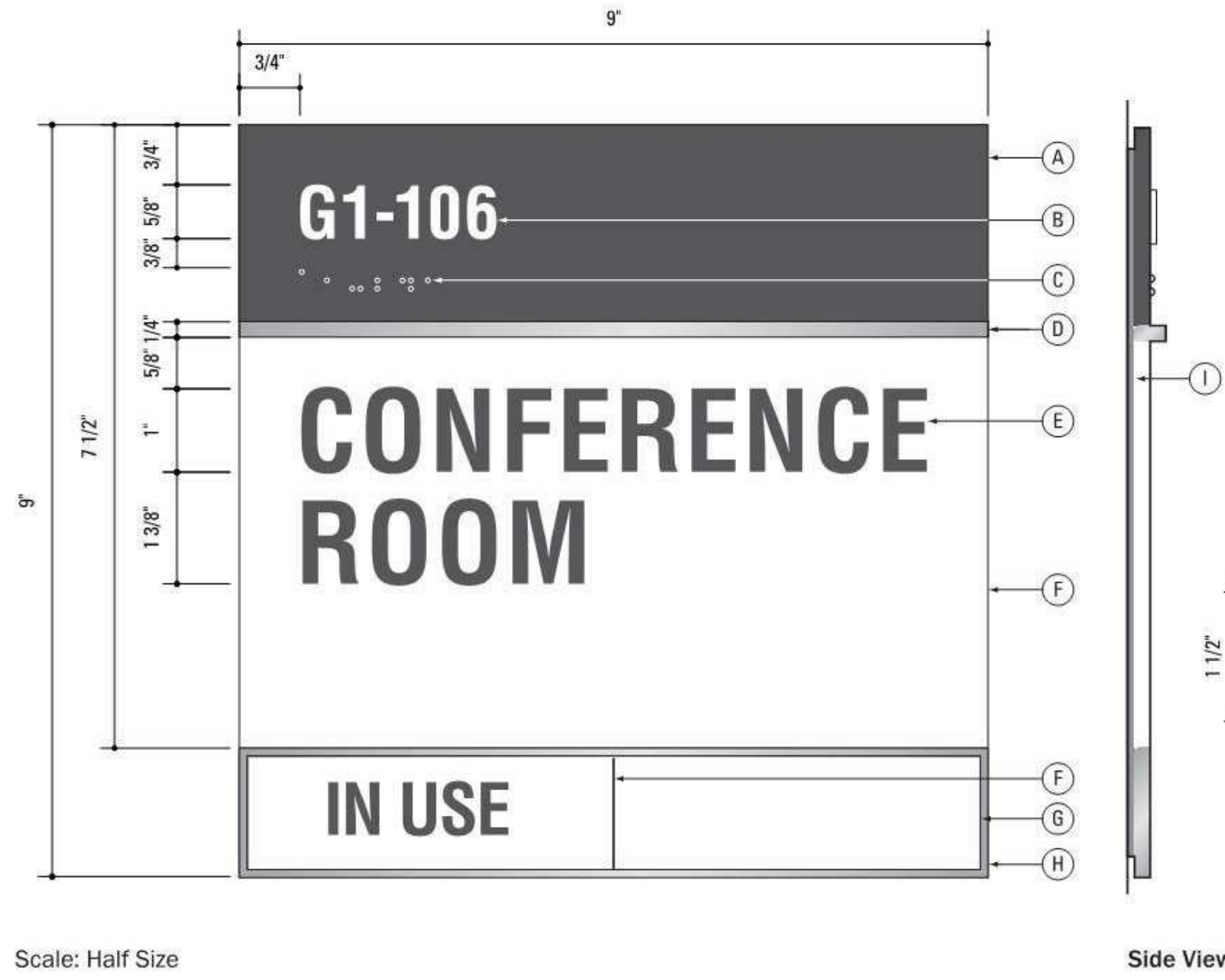
The Room Identification sign is used to identify rooms that have specified room names or functions. These signs should be used for rooms that are less likely to change. For signs with messages likely to change, it is recommended to use an insert in conjunction with Sign Type IN-301.3 (pg. 35).



(REFERENCE : VA PALO ALTO HEALTH CARE SYSTEM EXTERIOR AND INTERIOR STANDARDS: SECTION D SIGNAGE AND DISPLAY STANDARDS DATED MAY 16, 2014)

2 SG-1 ROOM IDENTIFICATION AND DESCRIPTION SIGN W/ INSERT SIGN

NOT TO SCALE

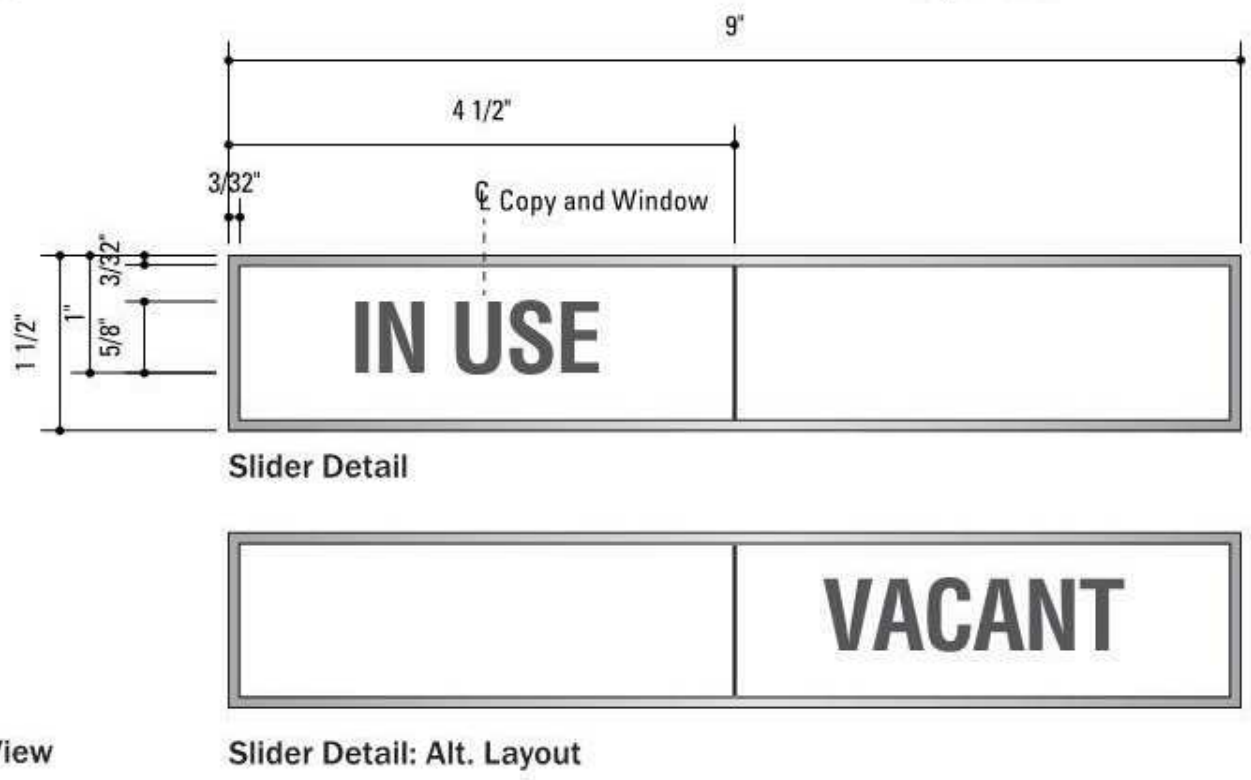


- Scale: Half Size
- A. 3/16" Acrylite P95 colorless acrylic sign panel. Paint second surface to match C-1. Do not paint edges.
 - B. Rowmark tactile copy tipped into A with minimum 1/32" relief. Color to match R-2. Typeface is Helvetica Bold Condensed.
 - C. Clear acrylic bead Braille.
 - D. 1/4" x 3/8" solid aluminum plate with #4 horizontal brushed finish and matte clear coat.
 - E. Screenprinted copy. Color to match C-8. Typeface is Helvetica Bold Condensed.
 - F. 3/16" Acrylite P95 colorless acrylic sign panel. Paint second surface to match C-2. Do not paint edges.
 - G. 1/32" thick slider panel, paint to match C-2.
 - H. Aluminum slider frame.
 - I. 1/16" thick black acrylic backer panel.

IN-300C: Conference Room Sign

Application:

The Conference room sign is to be used for conference rooms. The slider shows "IN USE" for times the room is being used, and "VACANT" when available. This slider component is can also be provided for other room signs as requested.



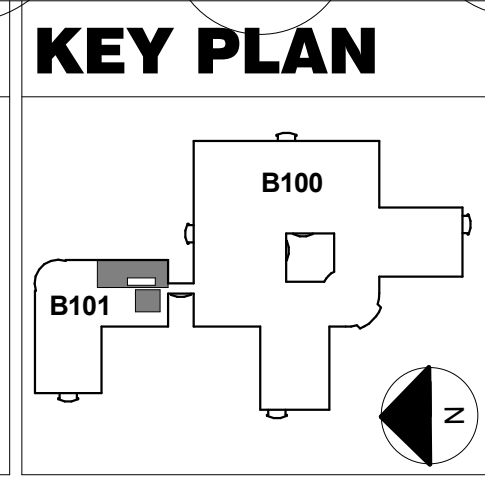
(REFERENCE : VA PALO ALTO HEALTH CARE SYSTEM EXTERIOR AND INTERIOR STANDARDS: SECTION D SIGNAGE AND DISPLAY STANDARDS DATED MAY 16, 2014)

4 SG-2 CONFERENCE ROOM SIGN

NOT TO SCALE

Revisions:	Date
1 AMENDMENT NO.5	5-29-2015

CONSULTANTS:



ARCHITECT/ENGINEERS:

IMEI

239 9TH STREET, SUITE 201
SAN FRANCISCO, CA 94103
T (415) 682-7330 F (415) 682-7330
www.imeidirect.com

MEHMEI GHAN
C-25930
11-29-13
RENEWAL DATA
STATE OF CALIFORNIA

Drawing Title
SIGNAGE DETAILS

Approved: Project Director

FULLY SPRINKLERED CONSTRUCTION DOCUMENTS - BID SET

Project Title RENOVATE SLEEP ROOMS FOR CLINICAL SUPPORT SERVICES BUILDING 101	Project Number 640-12-117P	Office of Facilities Management		
Building Number BLDG. 101/3RD FLR.	Drawing Number AS10-2 Dwg. -- of --			
Location VAPAHCS - PALO ALTO	Date SEPTEMBER 30, 2013	Checked MMC	Drawn WL	Department of Veterans Affairs