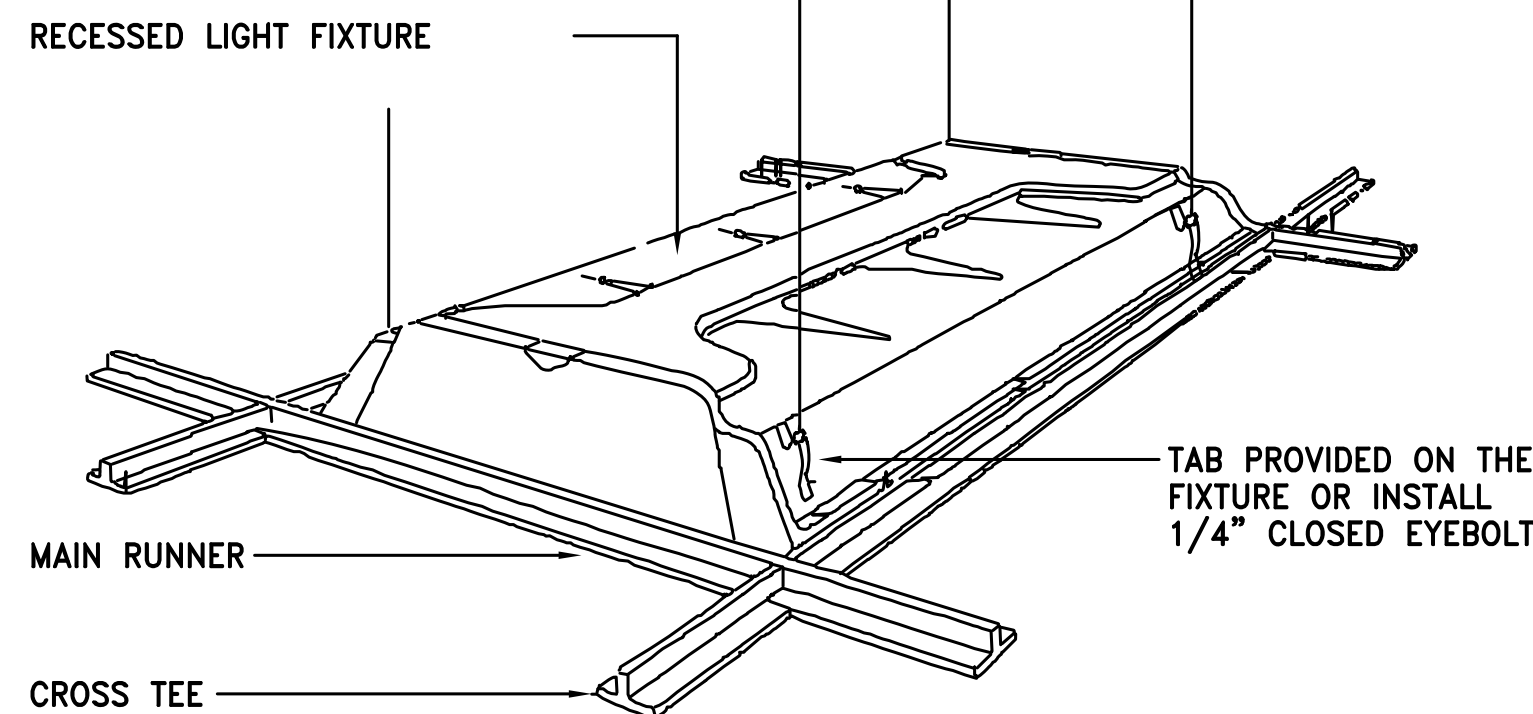
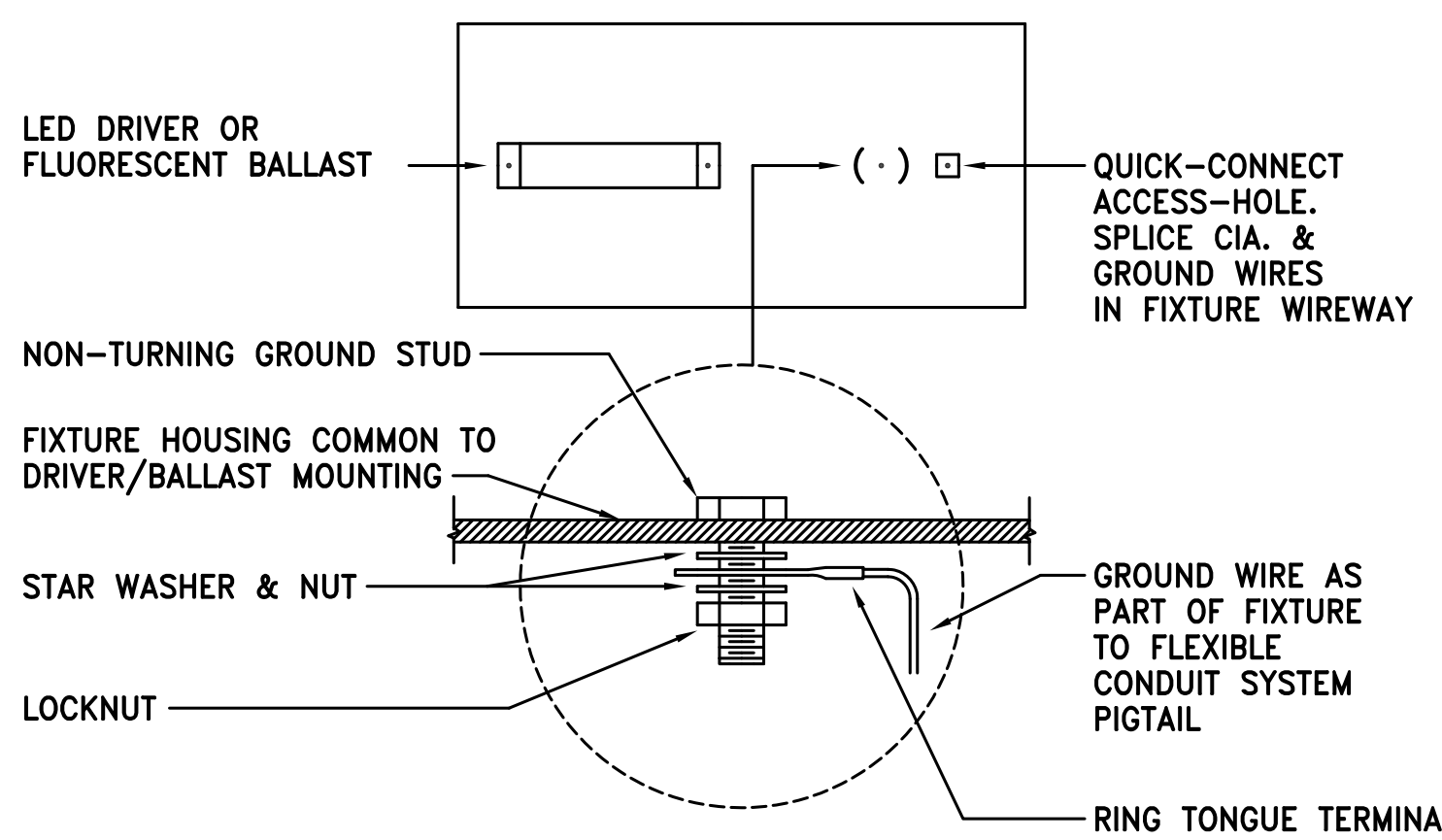


### 1 LIGHTING FIXTURE MOUNTING DETAIL

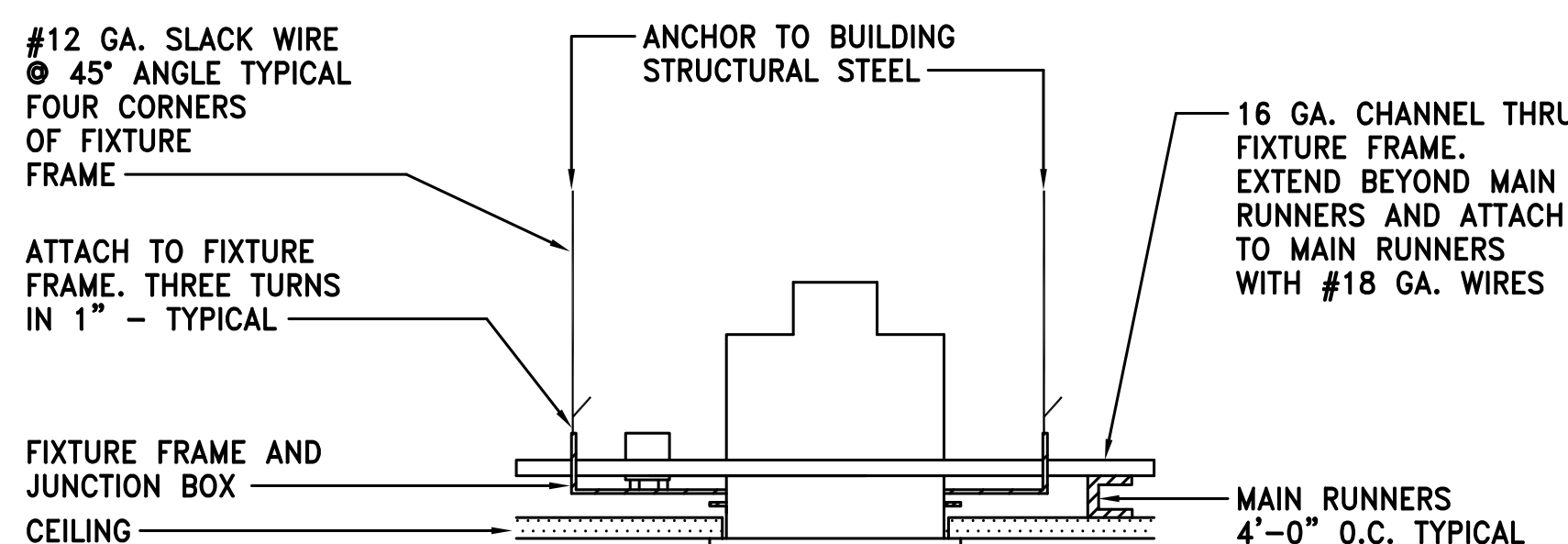
SUPPORT TIE WIRES TO BUILDING STRUCTURAL STEEL, USE GALVANIZED, #12 GAUGE (MINIMUM), SOFT IRON WIRE. TIE AT FOUR CORNERS OF A 4'-0" FIXTURE, WITH FOUR FULL WRAPS AT TOP AND BOTTOM



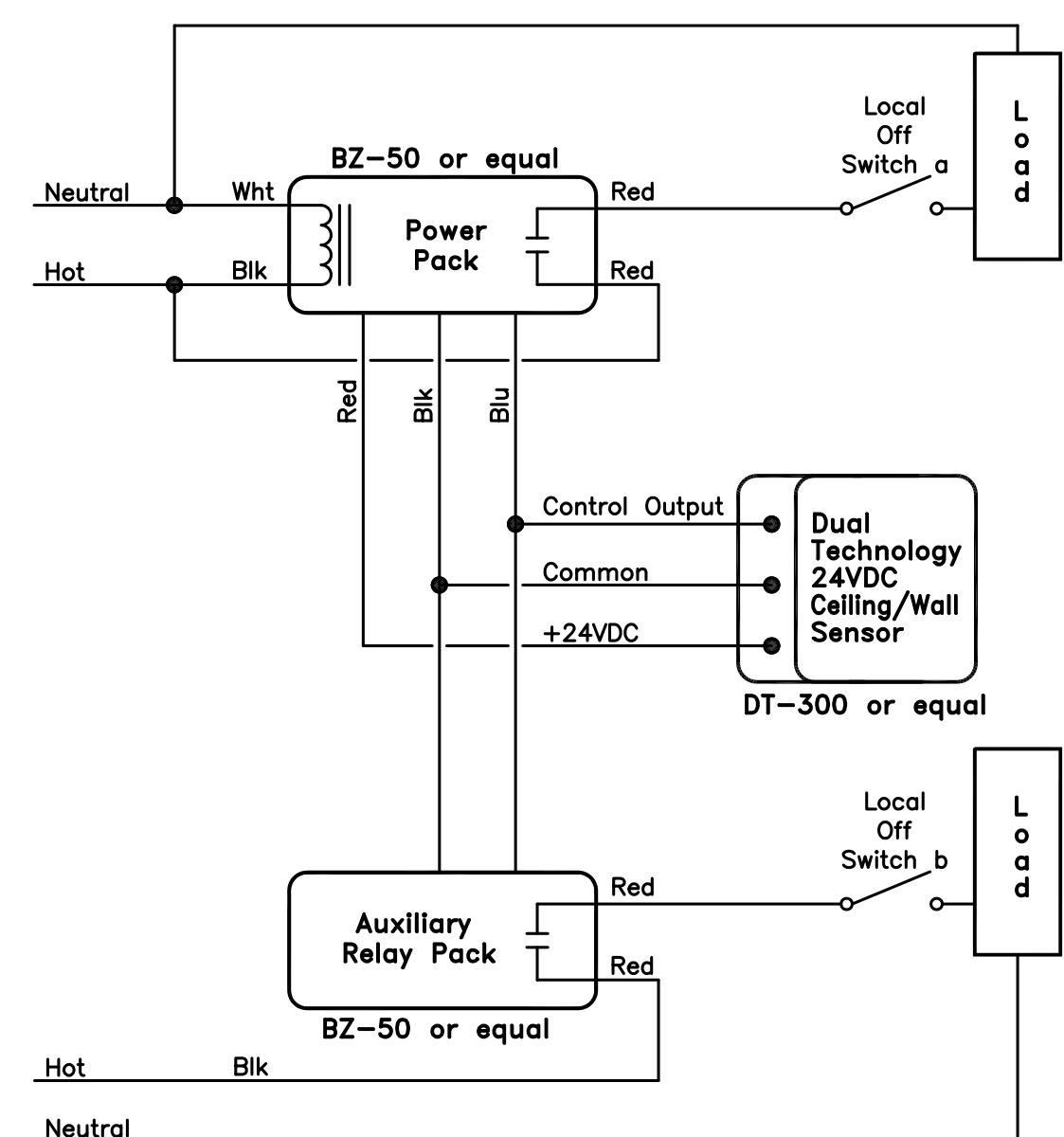
### 2 RECESSED FIXTURE IN T-BAR CEILING DETAIL



### 3 LIGHTING FIXTURE GROUNDING DETAIL



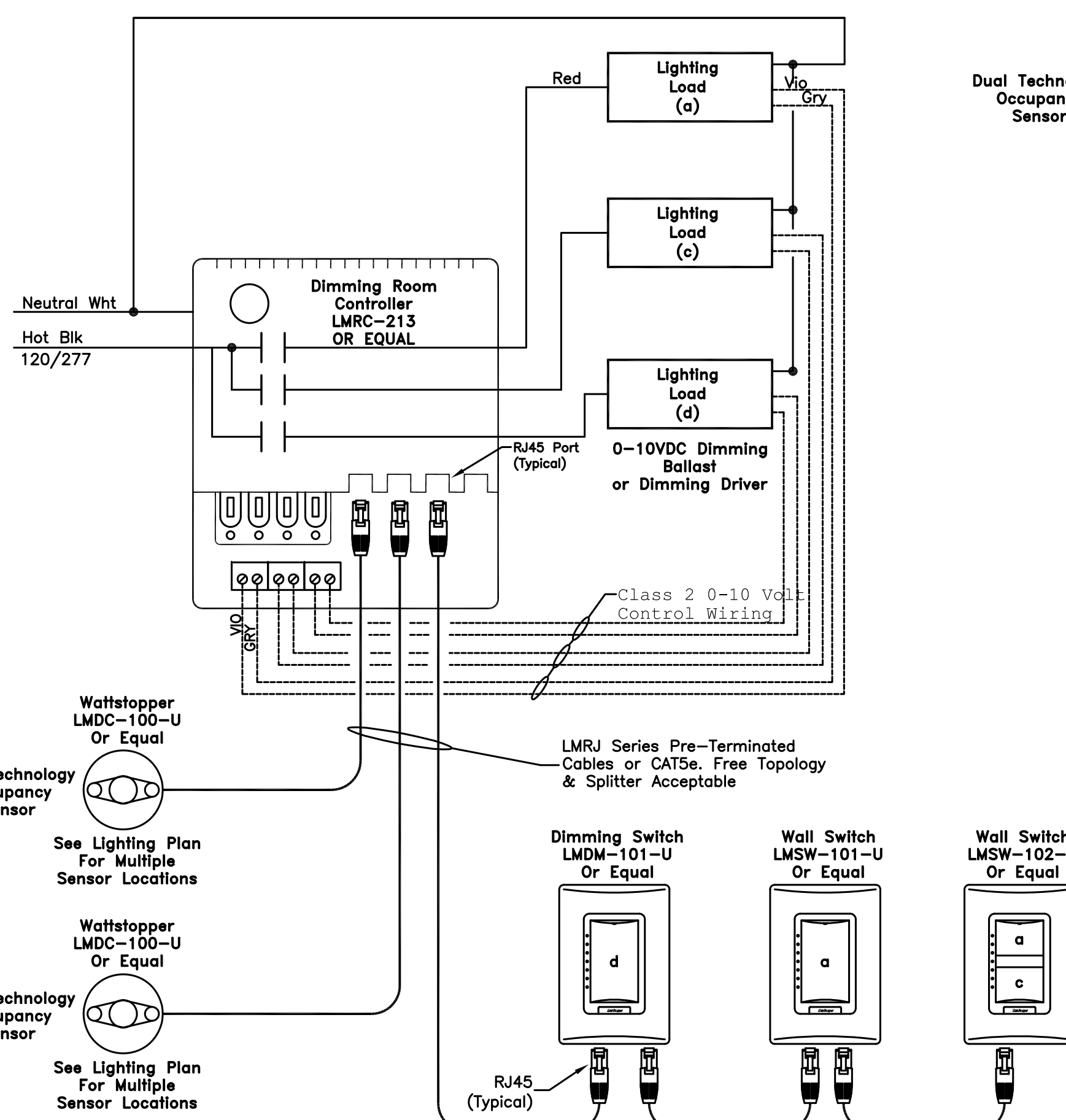
### 4 RECESSED DOWN LIGHT FIXTURE DETAIL



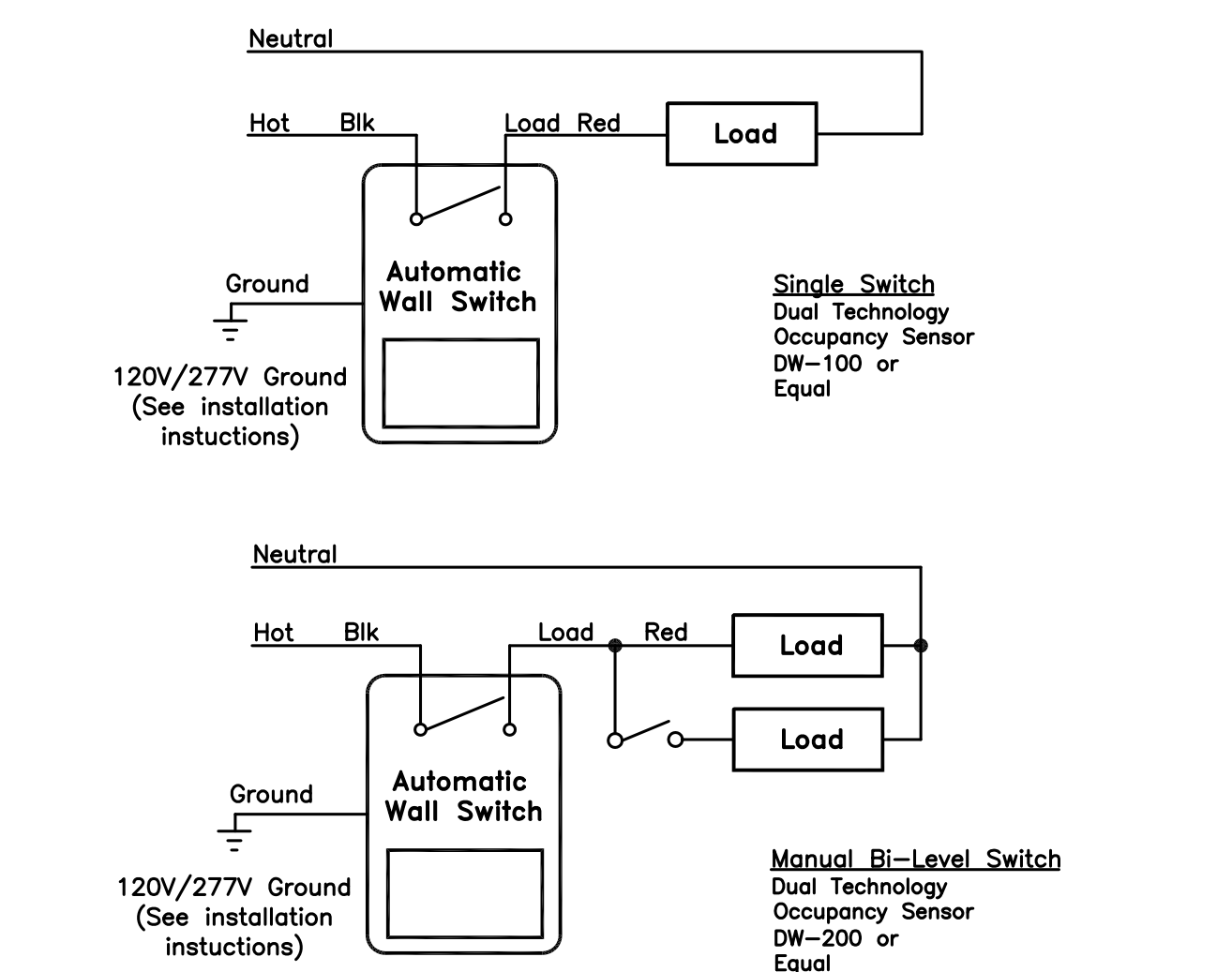
\* PROVIDE MOUNTING BRACKET TO SECURE POWER BACK.

\*\* PROVIDE ALL HARDWARE TO SECURE JUNCTION BOX

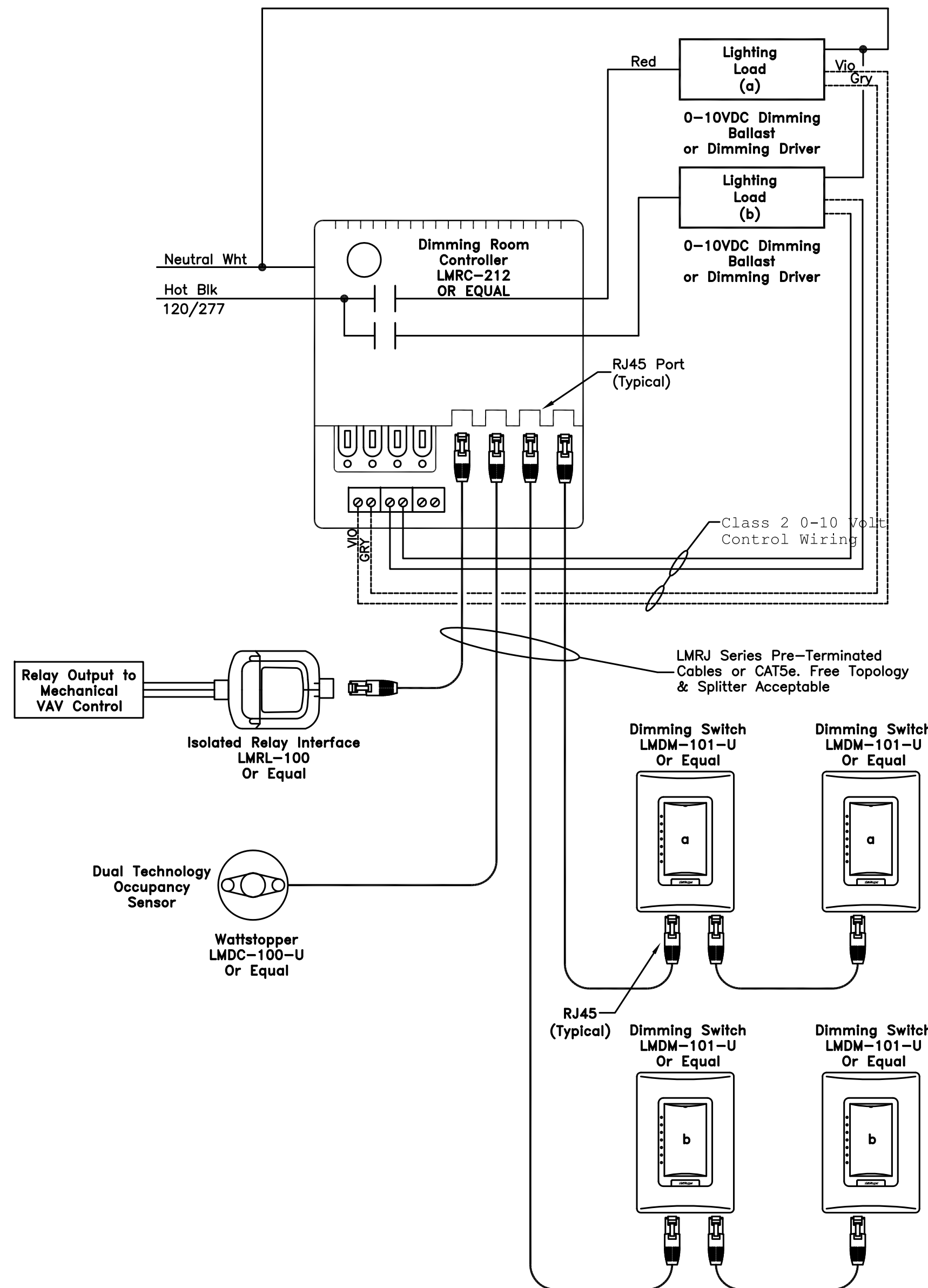
### 5 TWO CIRCUIT OR TWO LOAD SENSOR CONTROL



### 6 COMMON AREA CONTROL



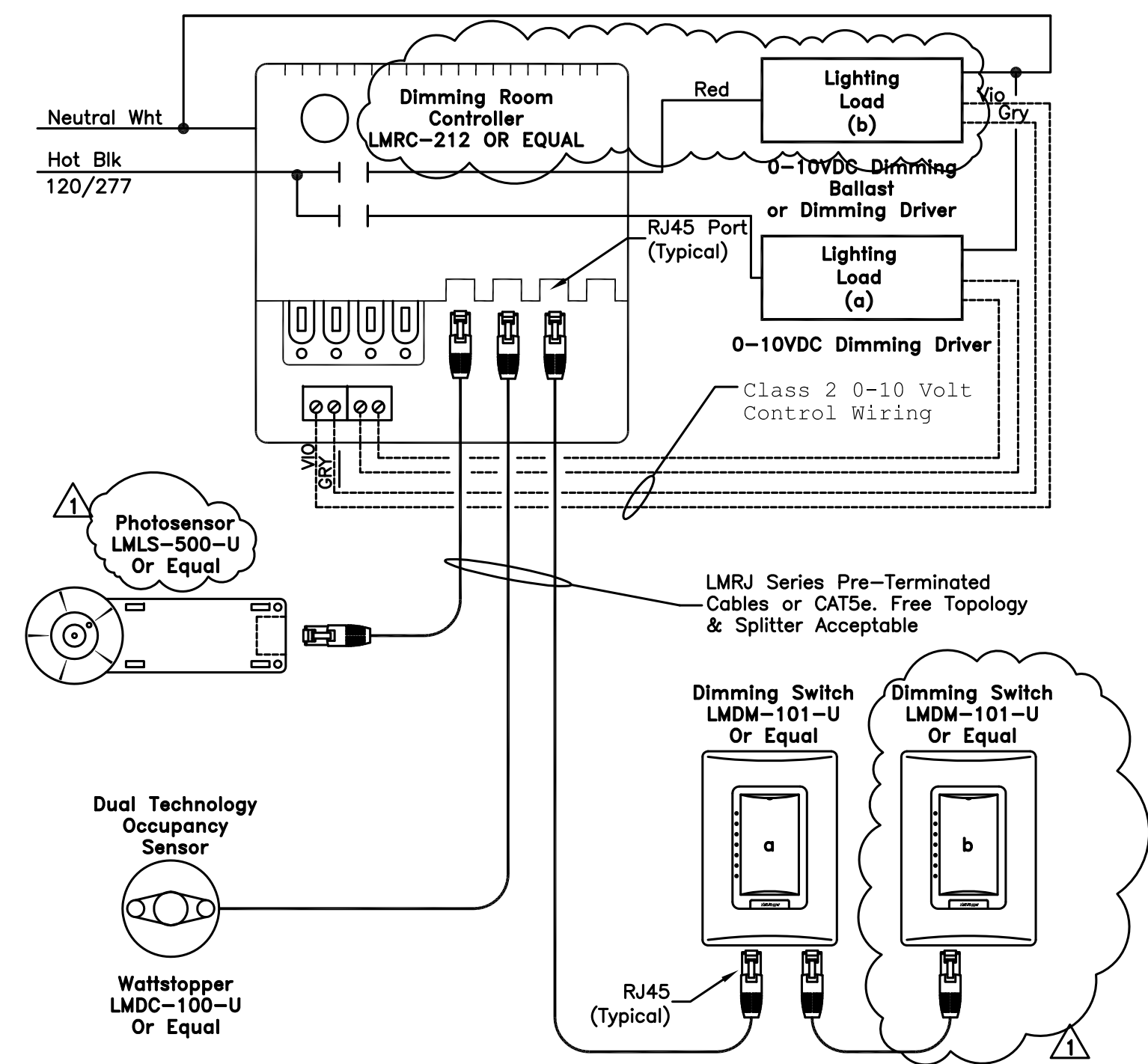
### 7 TYPICAL WALL OCCUPANCY SENSOR



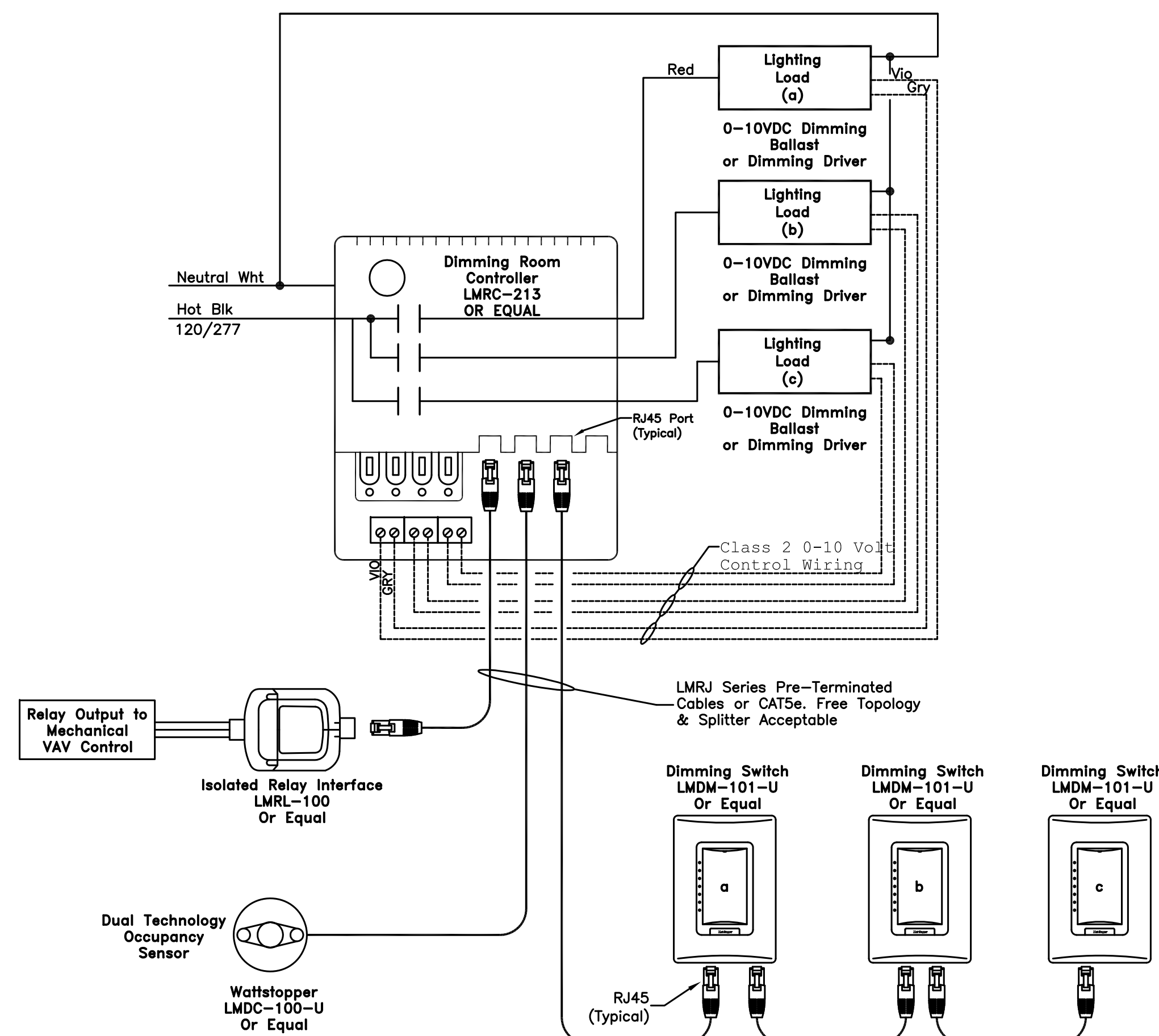
\* PROVIDE MOUNTING BRACKET TO SECURE POWER BACK.

\*\* PROVIDE ALL HARDWARE TO SECURE JUNCTION BOX

### 8 TWO CIRCUIT OR TWO LOAD SENSOR WITH DIMMER CONTROL



### 9 DAYLIGHT DIMMING DIAGRAM



### 10 THREE LOAD SENSOR WITH DIMMING DIAGRAM

<p>AMENDMENT NO.5</p> <p>Revisions:</p> <p>5-29-15</p> <p>Date</p>	<p><b>CONSULTANTS:</b></p> <p>F.W. ASSOCIATES, INC.</p> <p>CONSULTING ENGINEERS</p> <p>330 FRANKLIN, SUITE 400, OAKLAND, CA 94607</p> <p>PHONE: (510) 763-7475 FAX: (510) 763-7033</p>	<p><b>KEY PLAN</b></p>	<p><b>ARCHITECT/ENGINEERS:</b></p> <p>MEI</p> <p>239 9TH STREET, SUITE 201</p> <p>SAN FRANCISCO, CA 94103</p> <p>T (415) 682-7339 F (415) 682-7339</p> <p>www.meiarchitect.com</p>	<p>Drawing Title</p> <p><b>DETAILS</b></p> <p>Approved: Project Director</p>	<p>Project Title</p> <p><b>RENOVATE SLEEP ROOMS FOR CLINICAL SUPPORT SERVICES BUILDING 101</b></p> <p>Project Number</p> <p>640-12-117P</p> <p>Building Number</p> <p>BLDG. 101/3RD FLR.</p> <p>Location</p> <p><b>VAPAHCs - PALO ALTO</b></p> <p>Date</p> <p>SEPTEMBER 30, 2013</p> <p>Checked</p> <p>SJ/MF</p> <p>Drawn</p> <p>FWA TEAM</p> <p>Drawing Number</p> <p><b>ES-7.1</b></p> <p>Dwg. -- of --</p>	<p><b>Office of Facilities Management</b></p> <p>Department of Veterans Affairs</p>
--	--	------------------------	--	--	---	---