

three inches = one foot
one and one half inches = one foot
one inch = one foot
one half inch = one foot
three quarters inch = one foot
one half inch = one foot
three eighths inch = one foot
one quarter inch = one foot
one eighth inch = one foot

MATERIALS

U.O.N.

	CONCRETE
	EARTH
	GYPSUM BOARD
	BATT INSULATION
	RIGID INSULATION
	MEDIUM DENSITY FIBERBOARD
	ALUMINUM
	STUCCO
	PLYWOOD
	WOOD
	PLASTER
	STEEL

SYMBOLS

U.O.N.

	DRAWING NUMBER
	GROUP NUMBER
	DISCIPLINE PREFIX
	(E) COLUMN LINE W/ COLUMN DESIGNATIONS
	(N) COLUMN LINE W/ COLUMN DESIGNATIONS
	DOOR SYMBOL
	DOOR MARK
	HARDWARE GROUP
	WINDOW TYPE
	DETAIL
	DETAIL IDENTIFICATION
	SHEET WHERE DETAIL IS DRAWN.
	INTERIOR ELEVATION(S) ELEVATION IDENTIFICATION (UNFOLD ELEVATIONS CLOCKWISE NOT SHOWN.)
	SECTION
	SECTION IDENTIFICATION
	SHEET WHERE DETAIL IS DRAWN.
	REVISION CLOUD AROUND REVISION OPTIONAL
	ROOM IDENTIFICATION, TYPE 1 ROOM NAME ROOM NUMBER ROOM MATERIAL CODES
	ROOM IDENTIFICATION, TYPE 2 ROOM NAME ROOM NUMBER
	CENTERLINE OF OPENING
	CENTERLINE OF OPENING

	DIMENSION LINES
	CENTERLINE OF COLUMN OR STUD
	FACE OF FINISH
	TYPICAL FURRING OR PARTITION TYPE, SEE DWG. A9-1
	TYPICAL PARTITION
	SOUND RATED PARTITION WITH SOUND INSULATION
	CORNER GUARD
	SPRINKLER HEAD
	EXIT SIGN
	SMOKE DETECTOR
	PENDANT LIGHTING FIXTURE
	SURFACE MOUNTED LIGHTING FIXTURE
	WALL MOUNTED LIGHTING FIXTURE
	RECESSED MOUNTED LIGHTING FIXTURE
	COVE LIGHTING FIXTURE
	LIGHTING FIXTURE 24" X 48"
	REGISTER, EXHAUST OR RETURN
	REGISTER, EXHAUST OR RETURN (BEYOND)
	DIFFUSERS, SUPPLY
	AREA OUTSIDE OF PROJECT BOUNDARY

ABBREVIATIONS

U.O.N.

&	And	F.A.	Fire Alarm	PL.	Plate
L	Angle	F.D.	Floor Drain	P. LAM.	Plastic Laminate
@	At	FDN.	Foundation	PLYWD.	Plywood
□	Centerline	F.E.	Fire Extinguisher	PR.	Pair
□	Diameter	F.E.C.	Fire Extinguisher Cabinet	PT.	Point
#	Pound or Number	F.H.C.	Fire Hose Cabinet	P.T.D.	Paper Towel Dispenser
(E)	Existing	FIN.	Finish	PTN.	Partition
(N)	New	FIXT.	Fixture	QTY.	Quantity
(RL)	Relocated Existing	FL.	Floor	RAD.	Radius
A.B.	Anchor Bolt	FLUOR.	Fluorescent	REF.	Reference
ACQUST.	Acoustical	F.O.F.	Face of Finish	REFR.	Refrigerator
ADD.	Additional	F.O.S.	Face of Studs	RGTR.	Register
ADJ.	Adjustable	FRF.	Fireproof	REINF.	Reinforced
A.F.F.	Above Finished Floor	F.S.	Floor Sink	REQ.	Required
A.P.	Access Panel	FT.	Foot or Feet	RESIL.	Resilient
ARCH.	Architectural	GA.	Gauge	RM.	Room
BD.	Board	GALV.	Galvanized	R.H.	Robe Hook
BKG.	Backing	G.B.	Grab bar	R.O.	Rough Opening
BLDG.	Building	GL.	Glass	S.	South
BLK.	Block	GYP.	Gypsum	S.	Square
BLKG.	Blocking	H.C.	Hollow Core	S.C.	Solid Core
BM.	Beam	HDWD.	Hardwood	SCHED.	Schedule
BOT.	Bottom	HDWE.	Hardware	SECT.	Section
CAB.	Cabinet	HGT. or H.	Height	SHR.	Shower
CEM.	Cement	H.M.	Hollow Metal	SHT.	Sheet
CER.	Ceramic	HORIZ.	Horizontal	SIM.	Similar
C.G.	Corner Guard	HR.	Hour	SPEC.	Specification
C.J.	Construction Joint	I.D.	Inside Diameter	SQ.	Square
CLG.	Ceiling	INC.	Incandescent	S.S.T.	Stainless Steel
CLO.	Closet	INFO.	Information	STD.	Standard
CLR.	Clear	INSUL.	Insulation	STL.	Steel
CNTR.	Counter	INT.	Interior	STR.	Storage
C.O.	Cased Opening	INT.	Interior	STR.	Structural
COL.	Column	JT.	Joint	SUSP.	Suspended
CONC.	Concrete	KIT.	Kitchen	T.B.	Towel Bar
CONSTR.	Construction	LT.	Laboratory	T.C.	Top of Curb
CONT.	Continuous	LAM.	Laminate	TEL.	Telephone
CORR.	Corridor	LAB.	Laboratory	THK.	Thick
CPT.	Carpet	LT.	Light	THRES.	Threshold
CTR.	Center	LT.	Light	T.P.B.	Telephone Panelboard
CTSK.	Countersunk	MAT.	Material	TYP.	Typical
DET.	Detail	MAX.	Maximum	U.O.N.	Unless Otherwise Noted
DIA.	Diameter	M.D.F.	Medium Density Fiberboard		
DIM.	Dimension	MECH.	Mechanical		
DISP.	Dispenser	MET.	Metal	VERT.	Vertical
DN.	Down	MFR.	Manufacturer	VEST.	Vestibule
DR.	Door	MIN.	Minimum	V.I.F.	Verify in Field
DVA.	Department of Veterans Affairs	MISC.	Miscellaneous	VC.	Contractor Installed
DWG.	Drawing	MTD.	Mounted	VV	VA Furnished, VA Installed
E.	East	N.	North		
EA.	Each	N.I.C.	Not in Contract		
E.B.	Expansion Bolt	NO. or #	Number	W.	West
E.J.	Expansion Joint	NOM.	Nominal	W/	With
EL.	Elevation	N.R.	Non Rated	W.C.	Water Closet
ELEC.	Electrical	N.T.S.	Not To Scale	WD.	Wood
ELEV.	Elevator	O.A.	Overall	W.O.	Where Occurs
EMER.	Emergency	O.C.	On Center	W/O	Without
ENCL.	Enclosure	O.D.	Outside Diameter	WP.	Waterproof
ENGR.	Engineer	OFF.	Office	WT.	Weight
E.P.B.	Electrical Panelboard	O.H.	Opposite Hand	W.R.	Water Resistant
EQ.	Equal	OPNG.	Opening		
EQPT.	Equipment	OPP.	Opposite		
E.W.C.	Electric Water Cooler	O.F.C.I	Owner Furnished Contractor Installed		
EXP.	Expansion				
EXST.	Existing				
EXT.	Exterior				

DRAWING INDEX

GENERAL

G0-1	COVER SHEET
G0-2	PROJECT TEAM, PROJECT DATA, ABBREVIATIONS, SYMBOLS, MATERIALS, AND DRAWING INDEX
G0-3	THIRD FLOOR LIFE SAFETY AND EXIT DIAGRAM

ARCHITECTURE

AS1-1	PARTIAL ENLARGED THIRD FLOOR DEMOLITION AND PHASING PLAN
AS4-1	PARTIAL ENLARGED THIRD FLOOR PLAN
AS5-1	INTERIOR ELEVATIONS
AS5-2	INTERIOR ELEVATIONS
AS6-1	PARTIAL ENLARGED THIRD FLOOR REFLECTED CEILING PLAN
AS6-1A	PARTITION SCHEDULE AND DETAILS
AS9-1A	PARTITION AND FRAMING DETAILS
AS9-2	INTERIOR WINDOW SCHEDULE AND DETAILS
AS9-2A	INTERIOR WINDOW AND STOREFRONT SCHEDULES AND DETAILS
AS9-3	CEILING AND SOFFIT DETAILS
AS9-4	CASEWORK SCHEDULE AND DETAILS
AS10-1	PARTIAL ENLARGED THIRD FLOOR FINISH PLAN AND SIGN LOCATION PLAN
AS10-2	SIGNAGE DETAILS
AS10-3	SIGNAGE DETAILS

FIRE PROTECTION

FP1.1	EXISTING PARTIAL ENLARGED THIRD FLOOR FIRE PROTECTION PLAN
FP2.1	PARTIAL ENLARGED THIRD FLOOR FIRE PROTECTION PLAN

MECHANICAL

MH0.1	MECHANICAL SCHEDULES & NOTES
MH0.2	MECHANICAL SCHEDULES & NOTES
MD1.1	PARTIAL ENLARGED THIRD FLOOR MECHANICAL PRE-CONSTRUCTION AIR BALANCE PLAN
MD1.2	PARTIAL ENLARGED THIRD FLOOR MECHANICAL DEMOLITION PLAN
MD1.3	PARTIAL ENLARGED THIRD FLOOR MECHANICAL PIPING DEMOLITION PLAN
MH2.1	PARTIAL ENLARGED THIRD FLOOR MECHANICAL PLAN
MH2.2	PRE-CONSTRUCTION FOURTH FLOOR CONTROLS PLAN
MH5.1	MECHANICAL DETAILS
MH6.1	MECHANICAL CONTROLS
MP2.1	PARTIAL ENLARGED THIRD FLOOR MECHANICAL PLAN

PLUMBING

PL0.1	PLUMBING SCHEDULES & NOTES
PD1.1	PARTIAL ENLARGED THIRD FLOOR PLUMBING DEMOLITION PLAN
PL2.1	PARTIAL ENLARGED THIRD FLOOR PLUMBING PLAN

ELECTRICAL

ES-0.1	SYMBOL LEGEND, ABBREVIATIONS & GENERAL NOTES
ES-1.1	PARTIAL ENLARGED THIRD FLOOR - LIGHTING DEMOLITION PLAN
ES-1.2	PARTIAL ENLARGED THIRD FLOOR - POWER DEMOLITION PLAN
ES-2.1	PARTIAL ENLARGED THIRD FLOOR - LIGHTING PLAN
ES-2.2	PARTIAL ENLARGED THIRD FLOOR - POWER PLAN
ES-3.1	PARTIAL ENLARGED THIRD FLOOR - FIRE ALARM PLAN
ES-5.1	SINGLE LINE DIAGRAM
ES-6.1	PANEL SCHEDULES
ES-7.1	DETAILS
ES-7.2	SPECIFICATIONS

PROJECT TEAM

ARCHITECT

MEI ARCHITECTS
239 9TH STREET, SUITE 201
SAN FRANCISCO, CA 94103
ATTN: MEI MEI OHAN
TEL: (415) 682-7376
FAX: (415) 682-7339

MECHANICAL AND PLUMBING

CAPITAL ENGINEERING CONSULTANTS, INC.
11020 SUN CENTER DR., SUITE 100
RANCHO CORDOVA, CA 95770
ATTN: STEVE MAGENNIS
TEL: (916) 851-3500
FAX: (916) 851-4424

ELECTRICAL

ELECTRICAL ENGINEER
330 FRANK OGAWA PLAZA, SUITE 308
OAKLAND, CA 94111
ATTN: STEVE JANG
TEL: (510) 763-7475
FAX: (510) 763-7033

EXISTING BUILDING DATA

OCCUPANCY GROUP:	B
CONSTRUCTION TYPE:	TYPE II, 1 HOUR
FIRE PROTECTION:	FULLY SPRINKLERED (LIGHT HAZARD, TYPICAL)
NO. OF STORIES:	FOUR STORIES
EXISTING BUILDING AREA:	3RD FLOOR @ 31,624 SQUARE FEET

PROJECT DATA

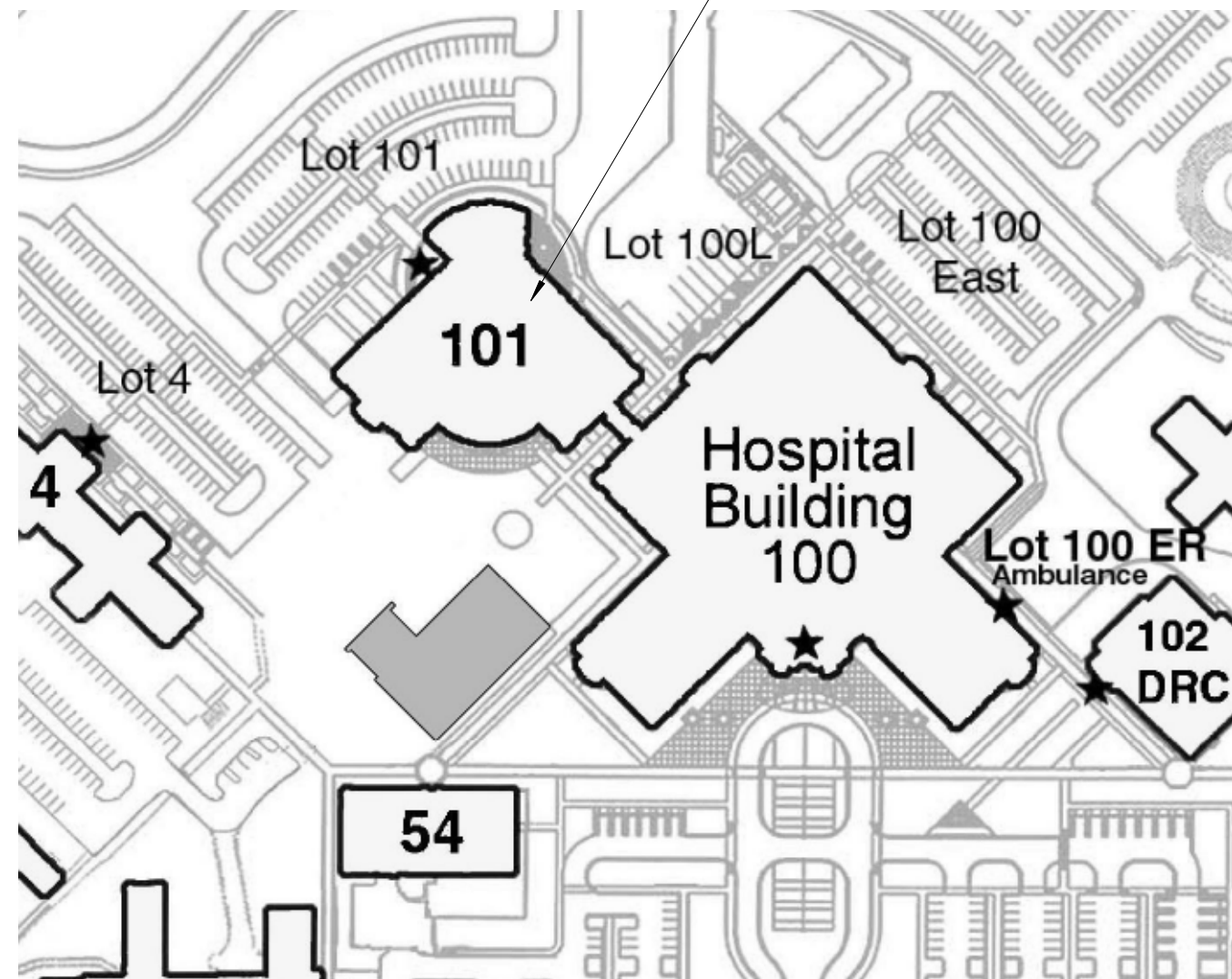
OCCUPANCY CLASSIFICATION:	GROUP B
PROJECT GROSS AREA:	4,300 SQUARE FEET
FIRE PROTECTION:	AUTOMATIC SPRINKLER SYSTEM THROUGHOUT BUILDING
APPLICABLE BUILDING CODES:	VA DIRECTIVES, DESIGN MANUALS, MASTER SPECIFICATIONS, VA NATIONAL CAD STANDARD APPLICATION GUIDE, AND OTHER GUIDANCE ON THE TECHNICAL INFORMATION LIBRARY (TIL). INTERNATIONAL BUILDING CODE (IBC), 2012 EDITION NFPA 101 LIFE SAFETY CODE, 2012 EDITION NFPA NATIONAL FIRE CODES WITH THE EXCEPTION OF NFPA 5000 AND NFPA 900 OCCUPATIONAL SAFETY AND HEALTH ADMINISTRATION (OSHA) STANDARDS VA SEISMIC DESIGN REQUIREMENTS, H-18-8 NATIONAL ELECTRICAL CODE (NEC), 2011 EDITION INTERNATIONAL PLUMBING CODE, 2012 EDITION INTERNATIONAL MECHANICAL CODE, 2012 EDITION ASME CODE FOR PRESSURE PIPING UNIFORM FEDERAL ACCESSIBILITY STANDARDS (UFAS) INCLUDING VA SUPPLEMENT, BARRIER FREE DESIGN GUIDE ENERGY POLICY ACT OF 2005 (EPAct) FEDERAL LEADERSHIP IN HIGH PERFORMANCE AND SUSTAINABLE BUILDINGS: MEMORANDUM OF UNSTANDING (MOU) VENTILATION FOR ACCEPTABLE INDOOR AIR QUALITY - ASHRAE STANDARD 62.1-2004

FULLY SPRINKLERED CONSTRUCTION DOCUMENTS - BID SET

VICINITY MAP



LOCATION MAP



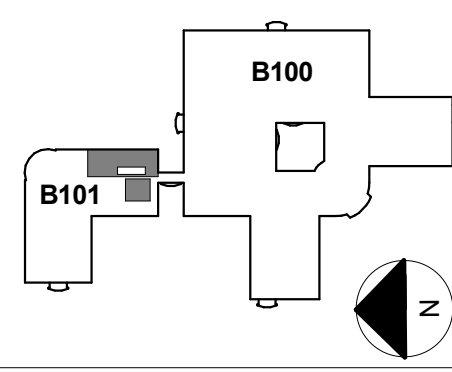
GENERAL NOTES

- LOCATIONS OF ALL UTILITY LINES (DUCTS, PIPES, CONDUITS, AND OTHER OVERHEAD OBSTRUCTIONS) SHOWN ARE APPROXIMATE. COORDINATE ALL SUPPORT SYSTEMS SO AS NOT TO INTERFERE WITH EACH OTHER. PROVIDE ADDITIONAL BRACING AS NECESSARY TO COMPLETE THE INSTALLATION AT NO INCREASE TO THE CONTRACT SUM.
- PROVIDE SEPARATE SHOP DRAWINGS FOR FIRE ALARM SYSTEM. SUBMIT FIRE ALARM SUBMITTAL INCLUDING SHOP DRAWINGS AND PRODUCT DATA TO DEPARTMENT OF VETERAN AFFAIRS FOR REVIEW AND APPROVAL PRIOR TO INSTALLATION. PROVIDE LISTING NUMBER FOR ALL COMPONENTS IN SUBMITTAL.
- PROVIDE SEPARATE SHOP DRAWINGS FOR FIRE SPRINKLER SYSTEM. SUBMIT SPRINKLER SYSTEM SUBMITTAL INCLUDING SHOP DRAWINGS, PRODUCT DATA, HYDRAULIC CALCULATIONS, ETC. TO DEPARTMENT OF VETERANS AFFAIRS FOR REVIEW AND APPROVAL PRIOR TO INSTALLATION. SPRINKLER SYSTEM SHALL BE DESIGNED IN ACCORDANCE WITH TITLE 24, COR PART 2, CHAPTER 38 AND NFPA 13, 2007 EDITION. AT ACOUSTICAL CEILING TILE LOCATIONS, LOCATE ALL SPRINKLER HEADS AT CENTER OF CEILING TILES, UNLESS OTHERWISE NOTED.
- IN ALL CONSTRUCTION AREAS, SEAL ALL PENETRATIONS SUCH AS DUCTS, CONDUITS, PIPES, ETC. AT FIRE RESISTIVE RATED PARTITIONS AND FLOOR/CEILING ASSEMBLIES, WHETHER SHOWN OR NOT AT NO CHANGE TO THE CONTRACT SUM. USE SEALANT TYPE TO MAINTAIN PROPER FIRE RESISTIVE RATING OF THE PENETRATED ASSEMBLIES. ALL PENETRATIONS AT FIRE RESISTIVE RATED PARTITIONS OR FLOOR/CEILING ASSEMBLIES SHALL BE IN ACCORDANCE WITH THE APPROPRIATE U.L. LISTED APPROVED SYSTEMS.
- IF CONTRACTOR PROPOSED ALTERNATE CONSTRUCTION DETAILS AND ARE REVIEWED BY DEPARTMENT OF VETERANS AFFAIRS, CONTRACTOR SHALL BE RESPONSIBLE FOR ALL COSTS AND TIME DELAYS RESULTING FROM CONTRACTOR'S PROPOSED ALTERNATE CONSTRUCTION DETAILS WHICH AFFECT OTHER PARTS OF THE WORK OR THE WORK OF SEPARATE CONTRACTORS.
- FIRE PROTECTION AT FIRE RESISTIVE RATED WALLS AND PARTITIONS:
 - NO ELECTRICAL BOXES SHALL BE LOCATED BACK TO BACK WITHIN 2'-0" MEASURED HORIZONTALLY, ON FIRE RESISTIVE RATED PARTITION. IF LOCATED WITHIN 2'-0" EACH ELECTRICAL BOX SHALL BE SEPARATED WITH FIRE RESISTIVE RATED GYPSUM BOARD AROUND FIVE SIDES.
 - ANY ELECTRICAL BOX LARGER THAN 16 SQUARE INCHES SHALL BE PROTECTED WITH FIRE RESISTIVE RATED GYPSUM BOARD AROUND FIVE SIDES.
 - FOR ANY 100 SQUARE FEET OF FIRE RESISTIVE RATED PARTITION AREA, THE ALLOWABLE AGGREGATED AREA FOR UTILITY BOXES SHALL NOT EXCEED 100 SQUARE INCHES.
- DEMOLITION AND NEW CONSTRUCTION WORK IN ALL EXISTING OCCUPIED AREAS WITHIN OR OUTSIDE PROJECT AREA SHALL BE PERFORMED DURING BUSINESS OFF-HOURS. CLOSE DOWN OF THESE AREAS WILL NOT BE PERMITTED UNLESS WRITTEN PERMISSION IS OBTAINED FROM DEPARTMENT OF VETERANS AFFAIRS. EXACT PERMITS BE COORDINATED WITH CONTRACTING OFFICER'S REPRESENTATIVE. PROVIDE CONSTRUCTION BARRICADE IN EXISTING OCCUPIED AREAS AS REQUIRED AND AS DIRECTED BY DEPARTMENT OF VETERANS AFFAIRS.
- LOCATIONS OF ALL UTILITY LINES (DUCTS, PIPES, CONDUITS, AND OTHER OVERHEAD OBSTRUCTION) SHOWN ARE APPROXIMATE. COORDINATE ALL SUPPORT SYSTEMS SO AS NOT TO INTERFERE WITH EACH OTHER. PROVIDE ADDITIONAL BRACING AS NECESSARY TO COMPLETE THE INSTALLATION AT NO INCREASE TO THE CONTRACT SUM.
- WHERE EXISTING FIREPROOFING WERE REMOVED FOR THE DEMOLITION AND NEW CONSTRUCTION WORK, PROVIDE NEW FIREPROOFING AS REQUIRED TO PATCH EXISTING FIREPROOFING. PATCH WORK SHALL MATCH EXISTING ADJACENT AREA IN CONSTRUCTION, MATERIAL, TYPE, AND FIRE RESISTIVE RATINGS.

CONSULTANTS:

1	AMENDMENT NO.5	5-29-2015
Revisions:		Date

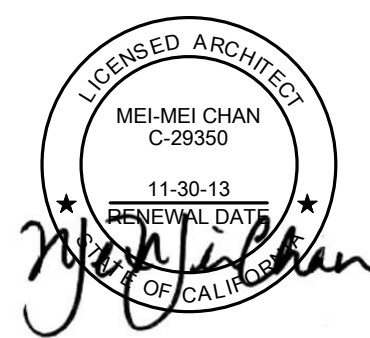
KEY PLAN



ARCHITECT/ENGINEERS:



239 9TH STREET, SUITE 201
SAN FRANCISCO, CA 94103
TEL: (415) 682-7376 F: (415) 682-7339
www.meiarchitects.com



Drawing Title

PROJECT TEAM, PROJECT DATA, ABBREVIATIONS, SYMBOLS, MATERIALS, AND DRAWING INDEX

Approved: Project Director

Project Title

RENOVATE SLEEP ROOMS FOR CLINICAL SUPPORT SERVICES BUILDING 101

Location

VAPAHCS - PALO ALTO

Date

SEPTEMBER 30, 2013

Checked

MMC

Drawn

TW

Project Number

640-12-117P

Building Number

BLDG. 101/3RD FLR.

Drawing Number

G0-2

Dwg. -- of --

**Office of
Facilities
Management**

