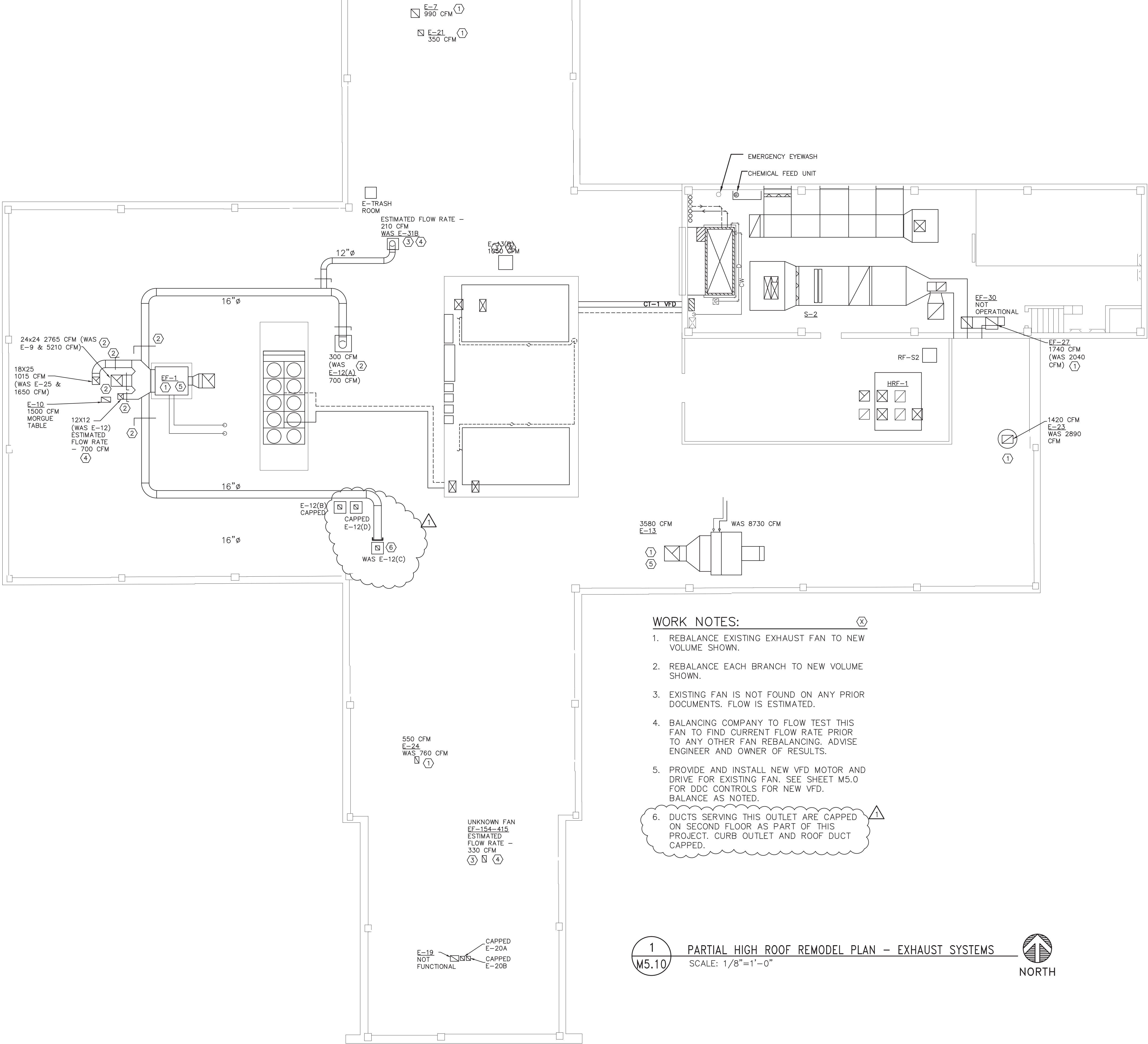


three inches = one foot
one and one half inches = one foot
one inch = one foot
three quarters inch = one foot
one half inch = one foot
three eighths inch = one foot
one quarter inch = one foot
one eighth inch = one foot

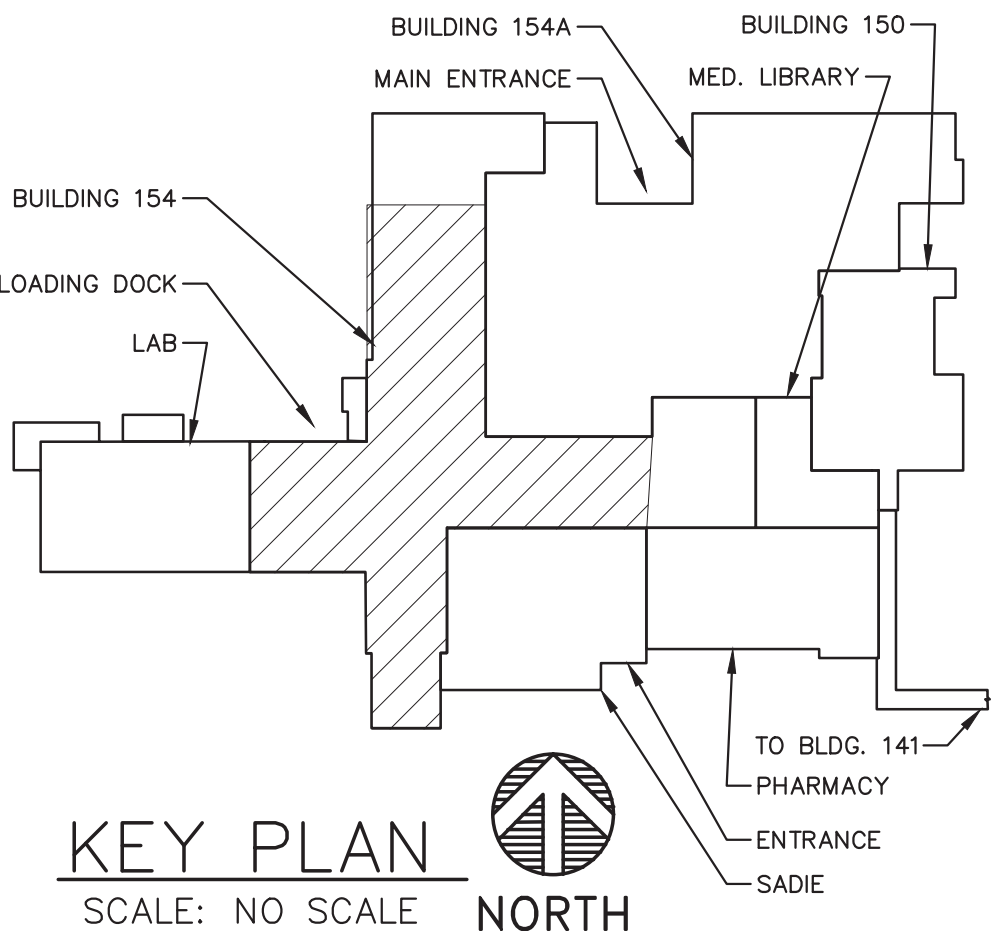


WORK NOTES:

- REBALANCE EXISTING EXHAUST FAN TO NEW VOLUME SHOWN.
- REBALANCE EACH BRANCH TO NEW VOLUME SHOWN.
- EXISTING FAN IS NOT FOUND ON ANY PRIOR DOCUMENTS. FLOW IS ESTIMATED.
- BALANCING COMPANY TO FLOW TEST THIS FAN TO FIND CURRENT FLOW RATE PRIOR TO ANY OTHER FAN REBALANCING. ADVISE ENGINEER AND OWNER OF RESULTS.
- PROVIDE AND INSTALL NEW VFD MOTOR AND DRIVE FOR EXISTING FAN. SEE SHEET M5.0 FOR DDC CONTROLS FOR NEW VFD. BALANCE AS NOTED.
- DUCTS SERVING THIS OUTLET ARE CAPPED ON SECOND FLOOR AS PART OF THIS PROJECT. CURB OUTLET AND ROOF DUCT CAPPED.

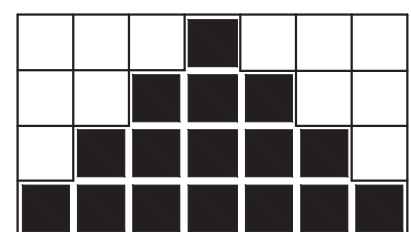
1
M5.10

PARTIAL HIGH ROOF REMODEL PLAN - EXHAUST SYSTEMS
SCALE: 1/8"=1'-0"



Revisions	Date
1. REVISE ROOM 422 AND ROOF ABOVE	6-8-15

CONSULTANTS:

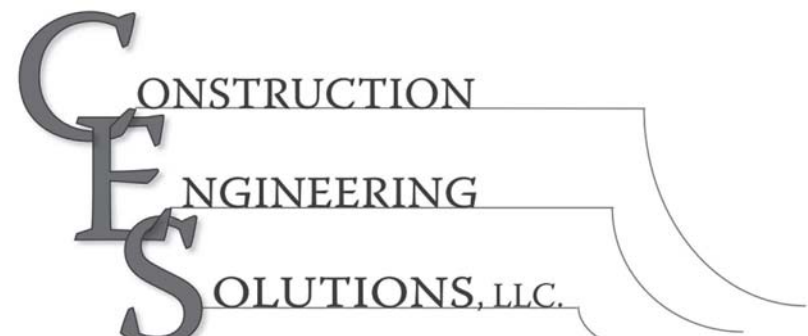


323 3RD AVENUE, #100
LONGMONT, CO 80501
JOB NO. 14004

TEL: 303.678.1108
FAX: 303.678.1142
PCDENGINEERING.COM



ARCHITECT/ENGINEERS:



715 Roundup Drive
Grand Junction, Colorado 81507
970.549.4504

Drawing Title
HIGH ROOF SECOND FLOOR
REMODEL PLAN

Approved Project Director
WAYNE DELZER, P.E.
Phone: 406.447.7290

Project Title
COMM. AUDIT CORRECTIONS
ELEMENT 4 - EXHAUST
SYSTEMS RENOVATIONS

Location
VAMC Fort Harrison, MT
Date
January, 2015

Checked
PD

Drawn
JLE

Project Number
436-14-001
Building Number
154

Drawing Number
M5.10
Dwg. 42 of 61

Office of
Construction
and Facilities
Management

