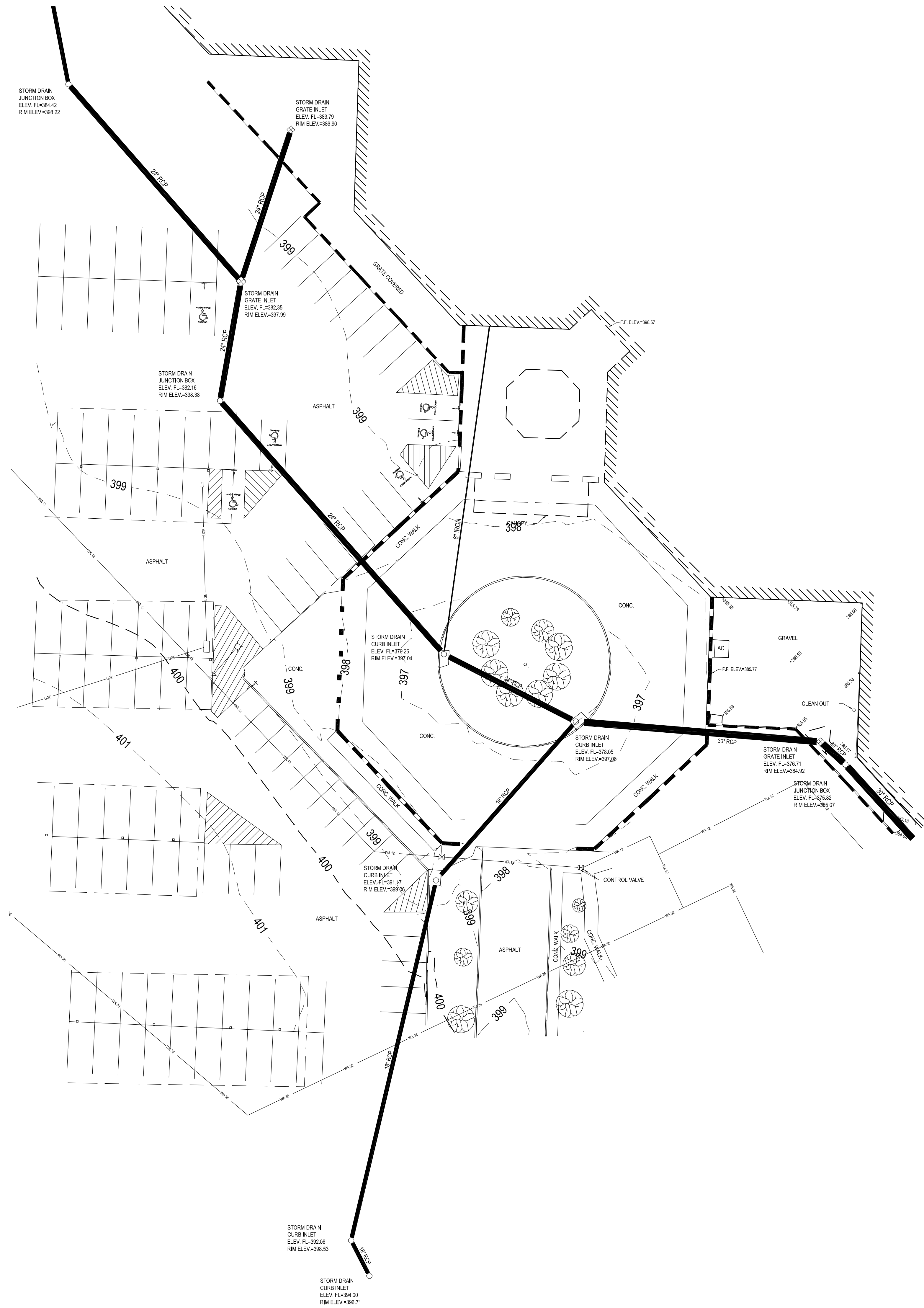


A
three inches = one foot
1
0
6"
B
one and one half inches = one foot
2
0
6"
C
one inch = one foot
2
0
6"
three quarters inch = one foot
4
0
6"
D
one half inch = one foot
4
0
6"
three eighths inch = one foot
8
0
6"
one quarter inch = one foot
16
0
6"
one eighth inch = one foot



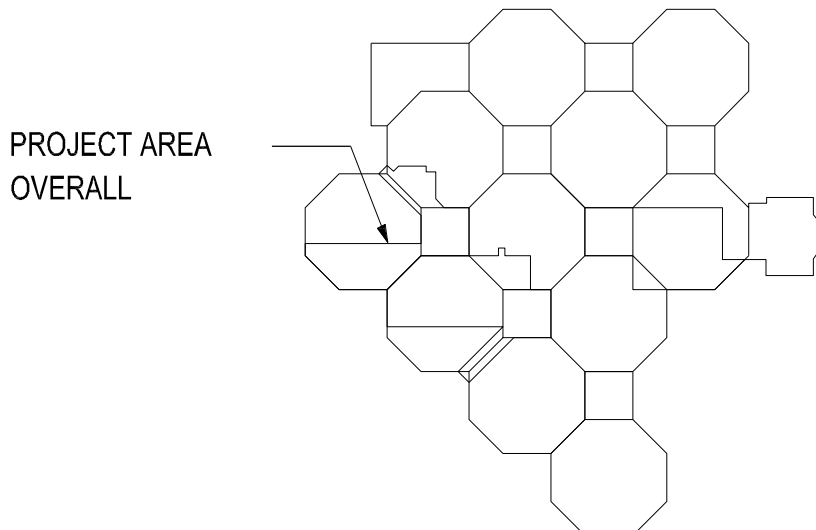
SURVEY PROVIDED BY:

DEVELOPMENT
CONSULTANTS
INCORPORATED

ENGINEERING -
PLANNING
LAND SURVEY
LANDSCAPE
ARCHITECTURE

2200 NORTH RODNEY
PARHAM ROAD
LITTLE ROCK, AR
72212-4155

PH. 501-221-7880
FAX 501-221-7882



KEY PLAN
LEVEL 1 F.F.E.:
PROJECT TOTAL:

0 10' 20' 40'
SCALE: 1"=20'

SCHEMATIC DESIGN SUBMISSION
FULLY SPRINKLERED

CONSULTANTS: CIVIL DESIGN CROMWELL AVE 101 SOUTH SPRING STREET LITTLE ROCK, ARKANSAS 72201 501-372-2900		ARCHITECT/ENGINEERS: BES DESIGN/BUILD BES DESIGN/BUILD, LLC 766 Middle St. Fairhope, AL 36532 Phone: 251.990.5778 Fax: 251.990.3716		Drawing Title SITE PLAN		Project Title IMPROVE OUTPATIENT SPECIALTY CLINIC SUPPORT AREAS		Project Number 598-13-107 Building Number 1		CENTRAL ARKANSAS VETERANS AFFAIRS HEALTHCARE SYSTEM	
Revisions: Date:				Approved: Project Director		Location LITTLE ROCK, AR		Drawing Number VF101 Dwg. 18 of 142		Department of Veterans Affairs	
Date: 2015.02.10						Date: 2015.02.10		Drawn MJT		Checked SBM	