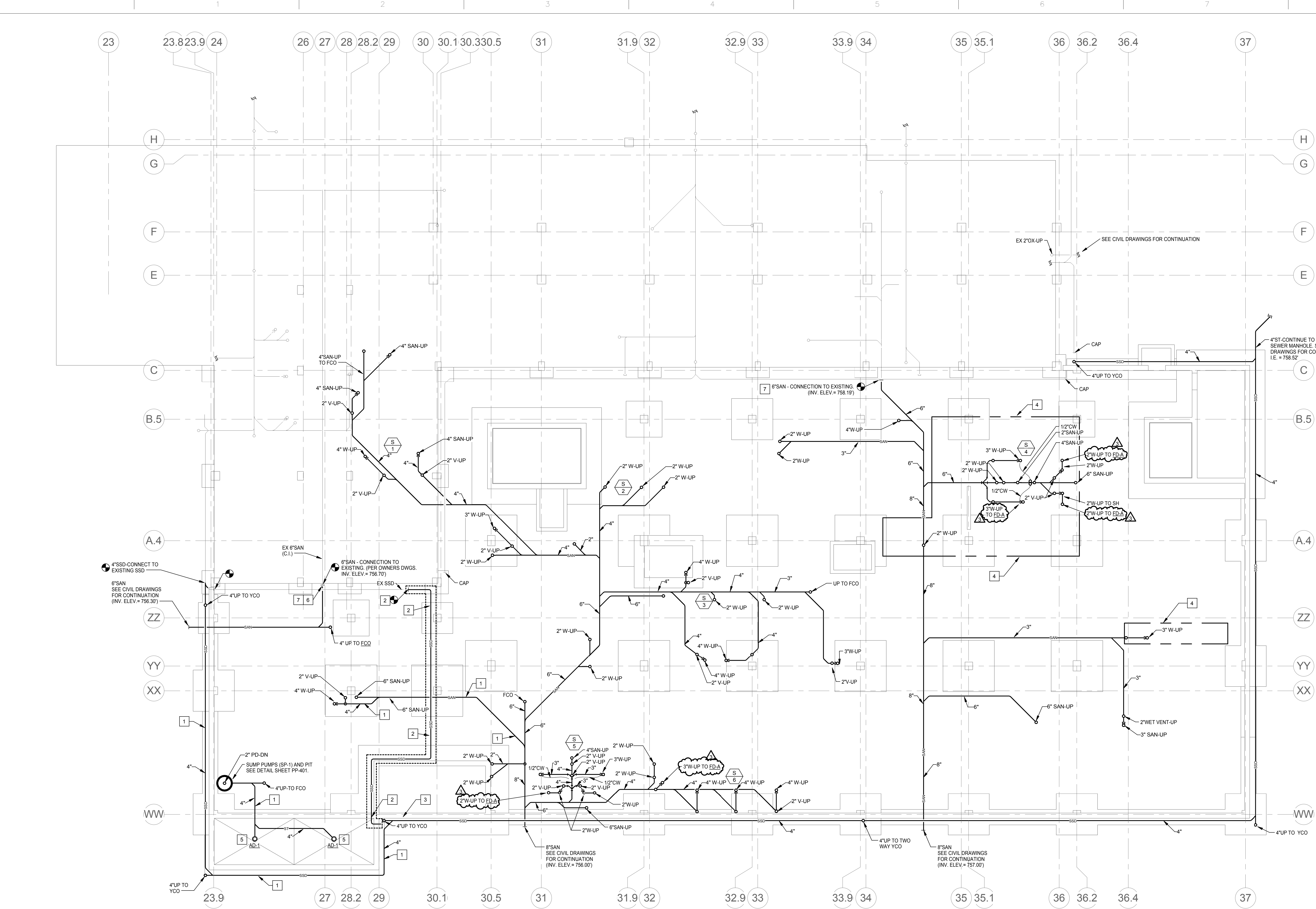
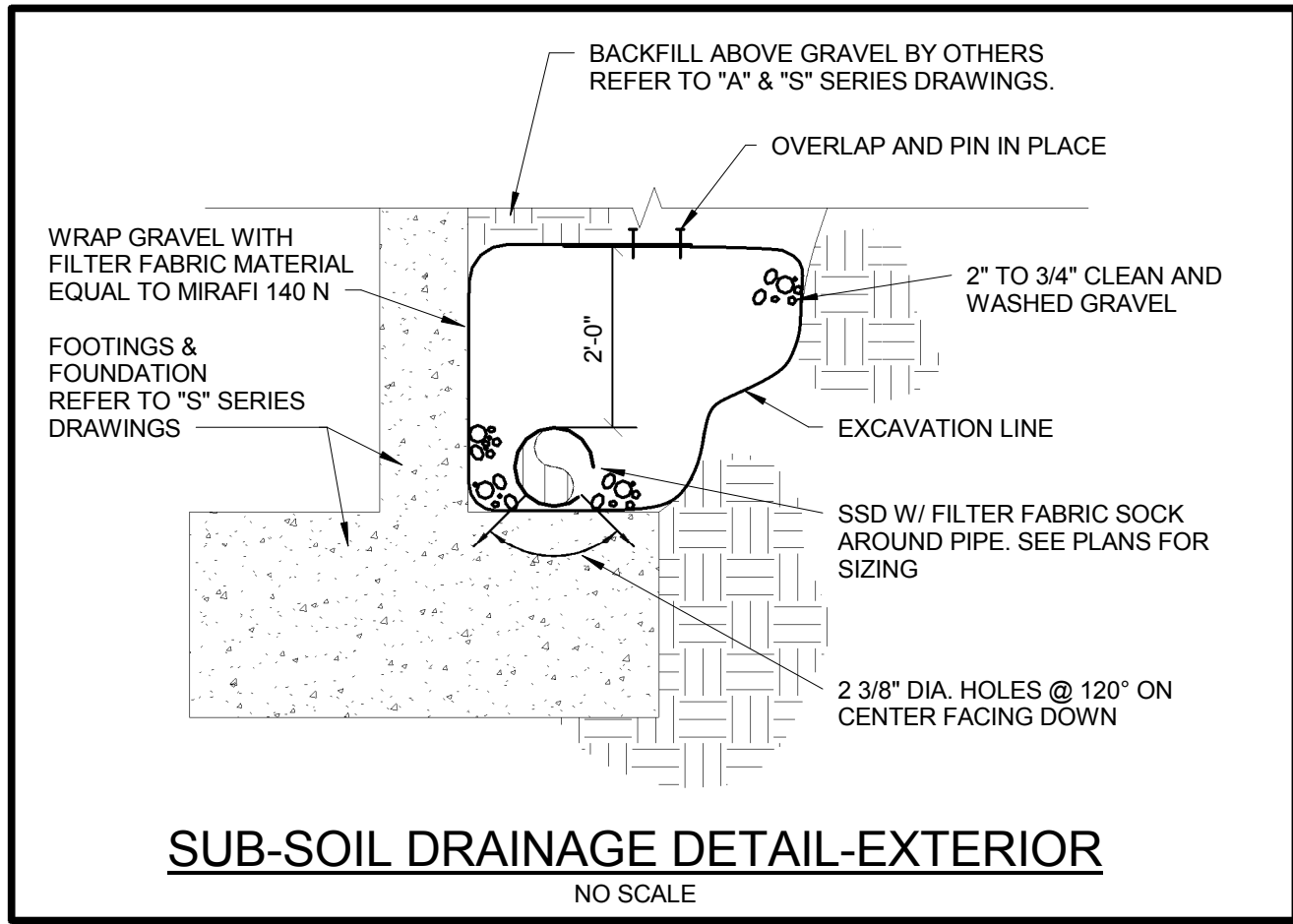


three eighths inch = one foot  
one eighth inch = one foot  
one quarter inch = one foot  
one half inch = one foot  
three quarters inch = one foot  
one inch = one foot  
one and one half inches = one foot  
two inches = one foot  
three inches = one foot  
four inches = one foot  
five inches = one foot  
six inches = one foot  
seven inches = one foot  
eight inches = one foot  
nine inches = one foot  
ten inches = one foot  
eleven inches = one foot  
twelve inches = one foot  
thirteen inches = one foot  
fourteen inches = one foot  
fifteen inches = one foot  
sixteen inches = one foot  
seventeen inches = one foot  
eighteen inches = one foot  
nineteen inches = one foot  
twenty inches = one foot  
twenty one inches = one foot  
twenty two inches = one foot  
twenty three inches = one foot  
twenty four inches = one foot  
twenty five inches = one foot  
twenty six inches = one foot  
twenty seven inches = one foot  
twenty eight inches = one foot  
twenty nine inches = one foot  
thirty inches = one foot  
thirty one inches = one foot  
thirty two inches = one foot  
thirty three inches = one foot  
thirty four inches = one foot  
thirty five inches = one foot  
thirty six inches = one foot  
thirty seven inches = one foot  
thirty eight inches = one foot  
thirty nine inches = one foot  
forty inches = one foot  
forty one inches = one foot  
forty two inches = one foot  
forty three inches = one foot  
forty four inches = one foot  
forty five inches = one foot  
forty six inches = one foot  
forty seven inches = one foot  
forty eight inches = one foot  
forty nine inches = one foot  
fifty inches = one foot  
fifty one inches = one foot  
fifty two inches = one foot  
fifty three inches = one foot  
fifty four inches = one foot  
fifty five inches = one foot  
fifty six inches = one foot  
fifty seven inches = one foot  
fifty eight inches = one foot  
fifty nine inches = one foot  
sixty inches = one foot  
sixty one inches = one foot  
sixty two inches = one foot  
sixty three inches = one foot  
sixty four inches = one foot  
sixty five inches = one foot  
sixty six inches = one foot  
sixty seven inches = one foot  
sixty eight inches = one foot  
sixty nine inches = one foot  
seventy inches = one foot  
seventy one inches = one foot  
seventy two inches = one foot  
seventy three inches = one foot  
seventy four inches = one foot  
seventy five inches = one foot  
seventy six inches = one foot  
seventy seven inches = one foot  
seventy eight inches = one foot  
seventy nine inches = one foot  
eighty inches = one foot  
eighty one inches = one foot  
eighty two inches = one foot  
eighty three inches = one foot  
eighty four inches = one foot  
eighty five inches = one foot  
eighty six inches = one foot  
eighty seven inches = one foot  
eighty eight inches = one foot  
eighty nine inches = one foot  
ninety inches = one foot  
ninety one inches = one foot  
ninety two inches = one foot  
ninety three inches = one foot  
ninety four inches = one foot  
ninety five inches = one foot  
ninety six inches = one foot  
ninety seven inches = one foot  
ninety eight inches = one foot  
ninety nine inches = one foot  
one hundred inches = one foot



- KEYED NOTES:**
- 1 UNDER DEDUCT ALTERNATE #03, PIPING SHALL BE DELETED.
  - 2 UNDER DEDUCT ALTERNATE #03, SUB-SOIL DRAINAGE PIPING TO BE ADDED.
  - 3 EXISTING SUB-SOIL DRAINAGE PIPING TO REMAIN UNDER DEDUCT ALTERNATE #03.
  - 4 UNDER DEDUCT ALTERNATE #01, PIPING/ROUGH-IN FOR FUTURE PLUMBING FIXTURE TO BE STUD-UP THROUGH BASEMENT FLOOR SLAB.
  - 5 UNDER DEDUCT ALTERNATE #03, DELETE AREA DRAINS AND PIPING.
  - 6 UNDER DEDUCT ALTERNATE #03, EXISTING SANITARY TO REMAIN.
  - 7 PLUMBING CONTRACTOR TO VERIFY DEPTH OF SEWER PRIOR TO ANY WORK BEING PERFORMED. IF INV. ELEV. IS LOWER THAN THAT INDICATED REPORT FINDINGS TO ARCHITECT/ENGINEER IMMEDIATELY.



**1 PLUMBING FOUNDATION NEW WORK PLAN**  
1/8" = 1'-0"  
BASEMENT FINISHED FLOOR ELEV. = 759.19'

100% CONSTRUCTION DOCUMENTS  
FULLY SPRINKLERED

Revisions: Amendment 07	Date: June 17, 2015
-------------------------	---------------------



VA NORTHERN INDIANA  
HEALTH CARE SYSTEM,  
FORT WAYNE  
2121 Lake Ave. Fort  
Wayne, IN 46805

ARCHITECT/ENGINEERS:



Ross & Baruzzini

8250 Haverstick Road  
Suite 285  
Indianapolis, IN 46240  
317.638.8383

CONSULTANTS:



Drawing Title  
PLUMBING FOUNDATION NEW WORK  
PLAN

Approved: Project Director

Project Title  
SPS BASEMENT ADDITION  
VA PROJECT # 610A4-12-400

Location  
2121 Lake Ave. Fort Wayne, IN 46805

Date  
08/15/2014

Checked  
JDB

Drawn  
BLB

Project Number  
2010.00629.0005

Building Number  
01

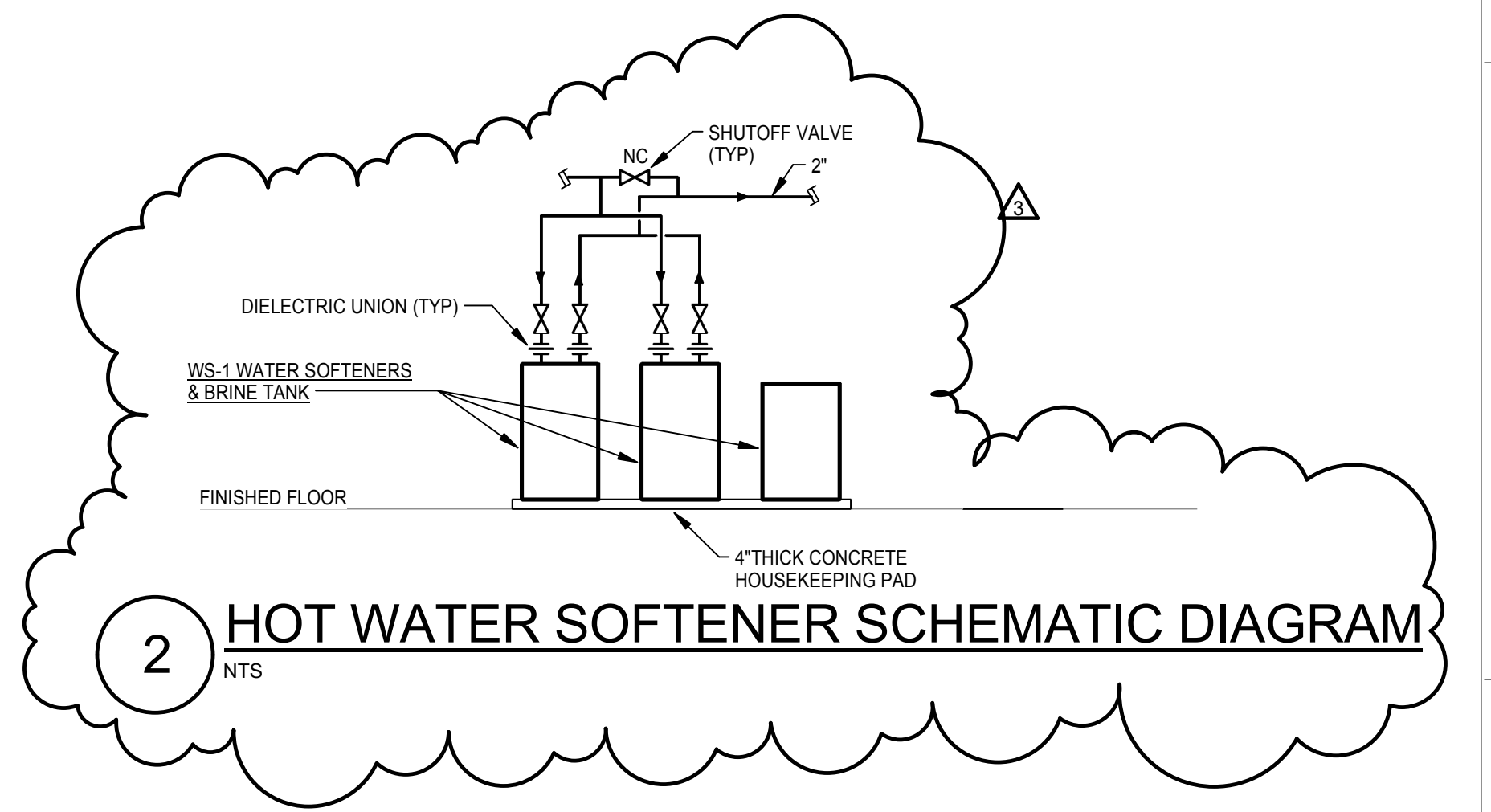
Drawing Number  
PP-100

Office of  
Construction  
and Facilities  
Management

VA Department of  
Veterans Affairs

# KEYED NOTES:

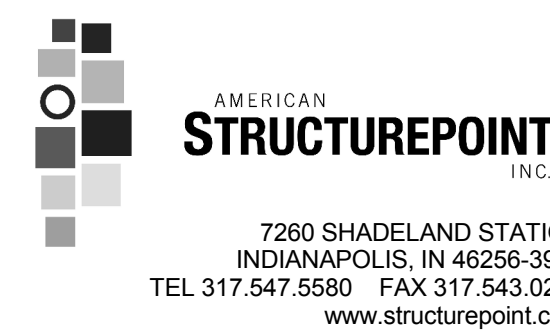
- 1 PROVIDE P-TRAP WITH TRAP ARM TRAP PRIMER AND ROUTE TO FLOOR DRAIN TRAP PRIMER CONNECTION.
- 2 2" INDIRECT WASTE TO TERMINATE OVER FLOOR SINK, FS-S.
- 3 1" CW DROP WITH SHUTOFF VALVE, WATER HAMMER ARRESTER, AND PRESSURE REGULATING VALVE.
- 4 3/4" HW DROP WITH WATER HAMMER ARRESTER, PRESSURE REGULATING VALVE, AND SHUTOFF VALVE.
- 5 HOT AND COLD WATER RP2'S SHALL HAVE THE DRAINS ROUTED TO NEARBY FLOOR SINK.
- 6 1/2" CA, 1" HW, 1" CW, 3/4" RO WATER, HOT AND COLD WATER SUPPLIES SHALL HAVE WATER HAMMER ARRESTERS, PRESSURE REGULATING VALVES, SHUTOFF VALVES, PRESSURE TYPE VACUUM BREAKERS.
- 7 3/4" HW, 3/4" CW, 1/2" RO, AND 1/2" CA HOT AND COLD WATER SUPPLIES SHALL HAVE WATER HAMMER ARRESTERS AND SHUTOFF VALVES.
- 8 3/4" HW, 3/4" CW, 1/2" RO, AND 1/2" CA WITH SHUTOFF VALVES.
- 9 FUTURE 6" SANITARY STACK ROUGH-IN TO BE PROVIDED AND CAPPED LOW ABOVE CEILING FOR CONNECTION OF FUTURE VERTICAL EXPANSION.
- 10 THERMOSTATIC MIXING VALVE SUPPLIES WITH 3/4" HW AND 3/4" CW CONNECTION WITH SHUTOFF VALVES. SEE DETAIL 5 ON SHEET PP-401.
- 11 3/4" CW AND 3/4" HW WITH SHUTOFF VALVES FOR CLEAN UP SINK.
- 12 1/2" CA, 3/4" RO, 3/4" CW, 3/4" HW, SUPPLIES WITH SHUTOFF VALVE.
- 14 ALL PIPING AND PLUMBING EQUIPMENT SHOWN IN ALTERNATE DEDUCT #03 ZONE TO BE REMOVED FROM SCOPE IF IT IS ACCEPTED.
- 15 PIPING IN INDICATED AREA TO BE ELIMINATED IF ALTERNATE DEDUCT #03 IS ACCEPTED.
- 16 CAP PIPING FOR FUTURE WASHER/DISINFECTOR AFTER SHUTOFF VALVES.
- 17 VALVE AND CAP FOR FUTURE STERILIZER.
- 18 STORM PIPING FOR OVERFLOW TO BE 6" IN SIZE AND TERMINATE WITH DS-1 AT EXTERIOR WALL OF BUILDING, NEAR INDICATED AREA IF ALTERNATE DEDUCT #03 IS ACCEPTED.
- 19 FLOOR SINK TO BE SEALED WITH GASKETED NICKEL BRONZE COVER PLATE FOR FUTURE STERILIZER.
- 20 IF ALTERNATE DEDUCT #01 IS ACCEPTED PLUMBING FIXTURES WILL BE DELETED AND FLOOR/CEILING ROUGH-INS PROVIDED.
- 21 PROVIDE TRAP PRIMER CONNECTION ON FLUSH VALVE TUBE.



## 1 BASEMENT PLAN - NEW WORK

1/8" = 1'-0" F.F. ELEVATION 759'-2.12"

### ARCHITECT/ENGINEERS:



**Ross & Baruzzini**

8250 Haverstick Road  
Suite 285  
Indianapolis, IN 46240  
317.638.8383

### CONSULTANTS:



Drawing Title  
**PLUMBING BASEMENT NEW WORK PLAN**

Approved: Project Director

Project Title  
**SPS BASEMENT ADDITION  
VA PROJECT # 610A4-12-400**

Location  
**2121 Lake Ave. Fort Wayne, IN 46805**

Date  
**08/15/2014**

Checked  
**JDB**

Drawn  
**LRC**

Project Number  
**2010.00629.0005**

Building Number  
**01**

Drawing Number  
**PP-101**

Office of  
Construction  
and Facilities  
Management

**VA** Department of  
Veterans Affairs

**VA**

VA NORTHERN INDIANA  
HEALTH CARE SYSTEM,  
FORT WAYNE  
2121 Lake Ave. Fort  
Wayne, IN 46805

Revisions: Amendment 07 Date: June 17, 2015

VA FORM 08-6231

PLUMBING FIXTURE SCHEDULE						
PLAN MARK	DESCRIPTION	HOT WATER	COLD WATER	SANITARY	VENT	NOTES
A0-1	AREA DRAIN			4"		
CS230	DOUBLE BOWL COUNTER MOUNT SINK	1/2"	1/2"	2"	2"	
OB	OUTLET BOX		1/2"			
P707	EMERGENCY SHOWER AND EYEWASH	1"	1"	2"	2"	1" TEIPID WATER TO UNIT
P708	EMERGENCY EYE WASH		2"	2"	2"	1/2" TEIPID WATER TO UNIT
P711	ADA TRANSFER SHOWER	1/2"	1/2"	2"	2"	
P804	HOSE BIBB		3/4"			
P3100	HAND WASH LAVATORY					
P4700	MOP BASIN	1/2"	1/2"	3"	2"	
P8150	URINAL		3/4"	2"	2"	
P9050	WALL HUNG WATER CLOSET		1 1/4"	4"	2"	
RH-1	ROOF HYDRANT	1"				DRAINLESS, FREEZE RESISTANT.

PLUMBING—WATER SOFTENER SCHEDULE								
PLAN MARK	CONTROL	TYPE	LOCATION	ROOM NUMBER	GRAINS CAPACITY	FLOW RATE	FLOW RATE	NOTES
	VALVE SIZE		ROOM NAME		CONT.	PEAK		
HWS-1	2"	ION	WATER TREATMENT	49C	210000	58	76	BACK WASH 8 GPM RATE, TWO MOTORS ALTERNATING DUPLEX.

PLUMBING-SUMP PUMP SCHEDULE								
PLAN MARK	Description	MAX. GPM	MAX. FT HEAD	ELECTRICAL DATA			CYCLE	NOTES
				HP	VOLTAGE	PHASE		
SP-1	DUPLEX SUMP PUMP SYSTEM	40	19	0.5	120	1	60 A	TO HAVE CONTROL PANEL WITH ALTERNATING SWITCH, CONTROLS FOR LEVEL CONTROLLER, HIGH WATER ALARM. SEE DETAIL #7 ON SHEET PP-401.

THERMOSTATIC MIXING VALVE SCHEDULE					
MARK	DISCHARGE FLOW	MAX. PSI LOSS	INLET TEMP	OUTLET TEMP	NOTES
TMT-1	1.5 GPM	5	120°F	95°F	THERMOSTATIC CONTROLLER WITH SWIVEL ACTION CHECK STOPS. REMOVABLE CARTRIDGE WITH STRAINER. STAINLESS STEEL PISTON AND LIQUID FILL. THERMAL MOTOR WITH BELLOWS MOUNTED OUT OF WATER. VOLUME CONTROL. SHUT OFF VALVE. BIMETAL DIAL THERMOSTAT. 3" RANGE. 20°F-240°F. BRASS PIPING, FITTINGS AND UNIONS. UNIT POLISHED CHROME.

[illegible]