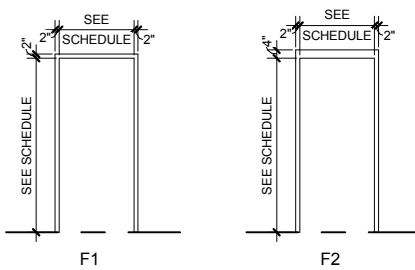
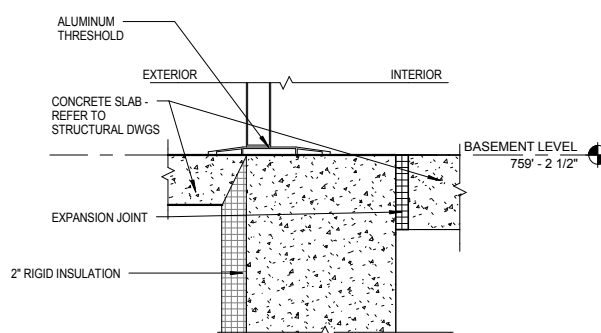


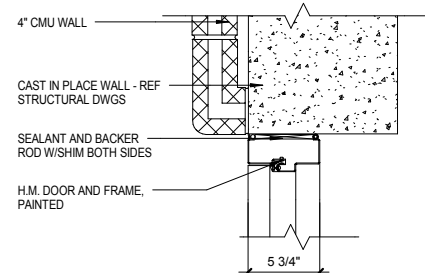
DOOR TYPES



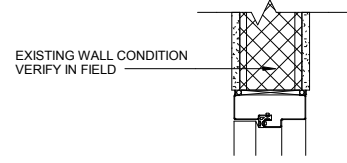
DOOR FRAME TYPES



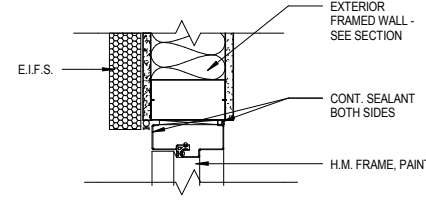
15  
AS-601  
EXTERIOR DOOR SILL  
1 1/2\"/>



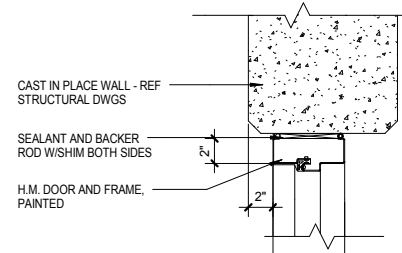
9  
AS-601  
DOOR JAMB J7  
1 1/2\"/>



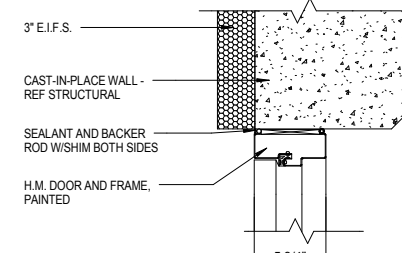
7  
AS-601  
DOOR JAMB J6  
1 1/2\"/>



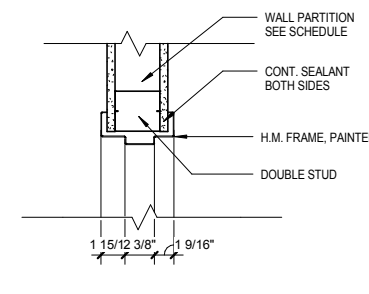
13  
AS-601  
DOOR JAMB J5  
1 1/2\"/>



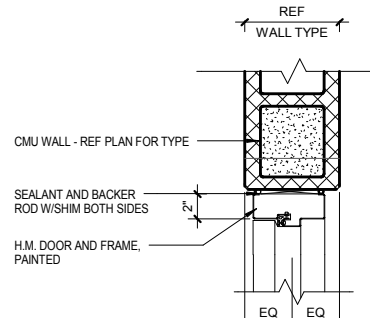
12  
AS-601  
DOOR JAMB J4  
1 1/2\"/>



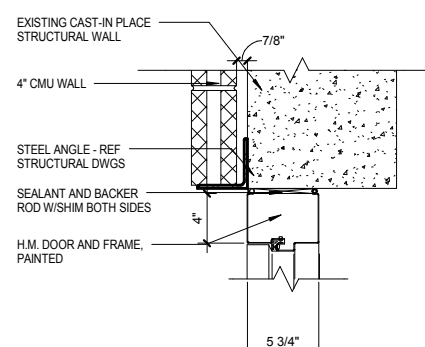
1  
AS-601  
DOOR JAMB J3  
1 1/2\"/>



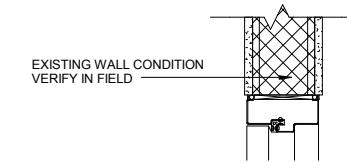
4  
AS-601  
DOOR JAMB J2  
1 1/2\"/>



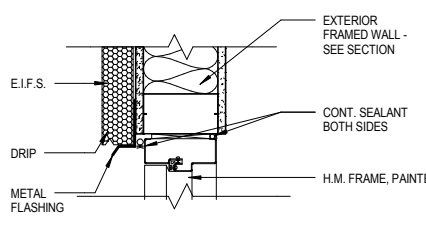
3  
AS-601  
DOOR JAMB J1  
1 1/2\"/>



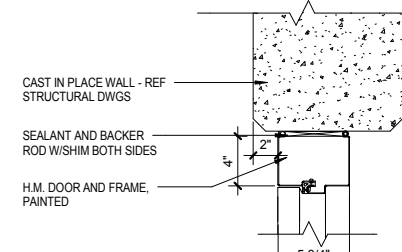
10  
AS-601  
DOOR HEAD H7  
1 1/2\"/>



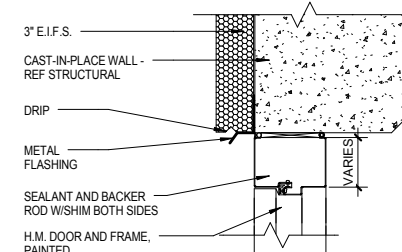
8  
AS-601  
DOOR HEAD H6  
1 1/2\"/>



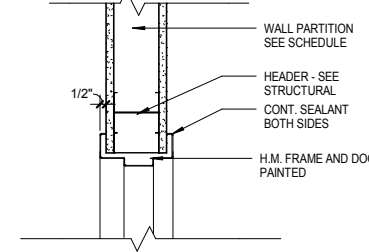
14  
AS-601  
DOOR HEAD H5  
1 1/2\"/>



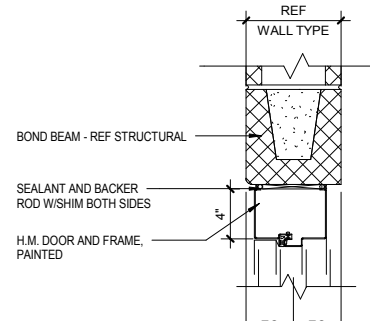
11  
AS-601  
DOOR HEAD H4  
1 1/2\"/>



6  
AS-601  
DOOR HEAD H3  
1 1/2\"/>



2  
AS-601  
DOOR HEAD H2  
1 1/2\"/>



5  
AS-601  
DOOR HEAD H1  
1 1/2\"/>

MARK	DOOR SIZE		DOOR		FRAME			HARDWARE	FIRE RATING
	WIDTH	HEIGHT	MATERIAL	TYPE	MATERIAL	TYPE	JAMB		
48A	6'-0"	7'-0"	HM	D1	HM	F2	J7	H7	11
49C	6'-0"	7'-0"	HM	D1	HM	F2	J7	H7	
53	6'-0"	7'-0"	HM	D1	HM	F2	J1	H1	
53A	3'-0"	7'-0"	HM	D1	HM	F2	J1	H1	
82	6'-0"	7'-0"	HM	D1	HM	F2	J1	H1	
100A	6'-0"	7'-0"	HM	D1	HM	F1	J4	H4	
100B	7'-0"	7'-0"	HM	D1	HM	F2	J1	H1	
101	3'-0"	7'-0"	HM	D1	HM	F2	J1	H1	5
102A	6'-0"	7'-0"	HM	D1	HM	F2	J1	H1	45 MIN
102B	3'-0"	7'-0"	HM	D1	HM	F2	J1	H1	
102C	3'-0"	7'-0"	HM	D1	HM	F2	J1	H1	5
102D	3'-0"	7'-0"	HM	D1	HM	F2	J1	H1	5
103A	3'-0"	7'-0"	WD	D1	HM	F2	J1	H1	4
103B	3'-0"	7'-0"	WD	D1	HM	F1	J2	H2	1
103C	3'-0"	7'-0"	WD	D1	HM	F1	J2	H2	1
103D	3'-0"	7'-0"	HM	D1	HM	F2	J1	H1	1A
103E	3'-0"	7'-0"	HM	D1	HM	F2	J1	H1	3
103F	3'-0"	7'-0"	HM	D1	HM	F2	J1	H1	1A
104A	3'-0"	7'-0"	HM	D1	HM	F2	J1	H1	3
104B	3'-0"	7'-0"	WD	D1	HM	F1	J2	H2	3A
105	3'-0"	7'-0"	HM	D1	HM	F2	J1	H1	4A
106A	6'-0"	7'-0"	HM	D1	HM	F2	J1	H1	10A
106B	6'-0"	7'-0"	HM	D1	HM	F2	J1	H1	10A
106C	3'-0"	7'-0"	HM	D1	HM	F2	J1	H1	4
106D	3'-0"	7'-0"	HM	D1	HM	F2	J1	H1	4
106E	3'-0"	7'-0"	HM	D1	HM	F2	J1	H1	1
106F	3'-0"	7'-0"	HM	D1	HM	F2	J1	H1	5
106G	3'-0"	7'-0"	HM	D1	HM	F2	J1	H1	4
107	3'-0"	7'-0"	HM	D1	HM	F2	J1	H1	
108	3'-0"	7'-0"	HM	D1	HM	F2	J1	H1	
109A	3'-0"	7'-0"	HM	D1	HM	F2	J1	H1	
109B	3'-0"	7'-0"	WD	D1	HM	F1	J2	H2	1
109C	3'-0"	7'-0"	WD	D1	HM	F1	J2	H2	1
110A	7'-0"	7'-0"	HM	D1	HM	F2	J1	H1	12
110B	3'-0"	7'-0"	HM	D1	HM	F2	J3	H3	E1
110C	6'-0"	8'-0"	HM	D1	HM	F2	J1	H1	10A
111	3'-0"	7'-0"	HM	D1	HM	F2	J1	H1	3
112A	3'-0"	7'-0"	HM	D1	HM	F2	J1	H1	3
112B	3'-0"	7'-0"	HM	D1	HM	F1	J2	H2	3
112C	3'-0"	7'-0"	HM	D1	HM	F1	J2	H2	3
113	3'-0"	7'-0"	HM	D1	HM	F2	J1	H1	5
113A	3'-0"	7'-0"	HM	D1	HM	F1	J2	H2	5
113B	6'-0"	8'-0"	HM	D1	HM	F1	J2	H2	8E
113C	6'-0"	7'-0"	HM	D1	HM	F2	J1	H1	10A
114	3'-0"	7'-0"	HM	D1	HM	F2	J1	H1	SH-3
116	3'-0"	7'-0"	HM	D1	HM	F2	J1	H1	3
201	3'-0"	7'-0"	HM	D1	HM	F1	J5	H5	E1
C3	6'-0"	8'-0"	HM	D1	HM	F2	J1	H1	10A
C4	7'-0"	7'-0"	HM	D1	HM	F2	J7	H7	12
EL1	3'-0"	7'-0"	HM	D1	HM	F1	J2	H2	3
EL2	3'-0"	7'-0"	HM	D1	HM	F1	J2	H2	3
EL3	3'-0"	7'-0"	HM	D1	HM	F1	J2	H2	3
ST1A	3'-0"	7'-0"	HM	D1	HM	F2	J4	H4	
ST1B	3'-0"	7'-0"	AL	D1	AL	SF1	SF1	E1	90 MIN
ST2	3'-0"	7'-0"	HM	D1	HM	F1	J4	H4	5

REVISIONS		
Revision #	Description	Date
1	Amendment 4	06/03/2015
SUBMISSIONS		
100% CONSTRUCTION DOCUMENTS	8-15-2014	
95% CONSTRUCTION DOCUMENTS	5-22-2014	
85% CONSTRUCTION DOCUMENTS	3-28-2014	
SCHEMATIC DESIGN	1-24-2013	

**VA**

VA NORTHERN INDIANA  
HEALTH CARE SYSTEM,  
FORT WAYNE  
2121 Lake Ave. Fort  
Wayne, IN 46805

ARCHITECT/ENGINEERS:

**STRUCTUREPOINT**  
INC.  
7260 SHADELAND STATION  
INDIANAPOLIS, IN 46256-3957  
TEL 317.547.5580 FAX 317.543.0270  
www.structurepoint.com

**Ross & Baruzzini**

8250 Havenstick Road  
Suite 285  
Indianapolis, IN 46240  
317.638.8383

CONSULTANTS:



Drawing Title  
DOORS SCHEDULES AND DETAILS

Approved: Project Director

Project Title  
SPS BASEMENT ADDITION  
VA PROJECT # 610A4-12-400

Location  
2121 Lake Ave. Fort Wayne, IN 46805

Date  
08/15/2014

Checked  
JDF/FMF

Drawn  
APN

Project Number  
2010.00629.0005

Building Number  
01

Drawing Number  
AS-601

Office of  
Construction  
and Facilities  
Management

**VA** Department of  
Veterans Affairs