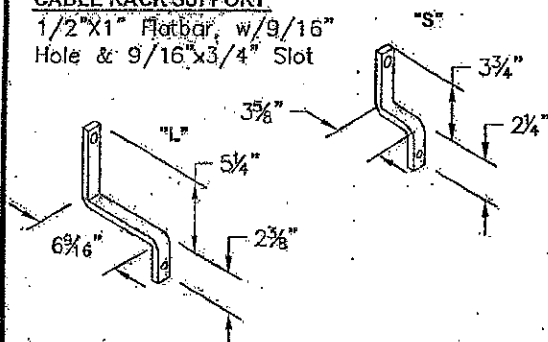


Note: All Hardware To be Hot Dipped Galvanized

CABLE RACK SUPPORT

1/2"x1" Flatbar, w/9/16"
Hole & 9/16"x3/4" Slot



BOLTS & NUT

1/2"x 1 1/2" Hex Bolt & Nut
1/2"x 2" Hex Bolt



CABLE RACK HOOK

Formed from 3/16" Steel

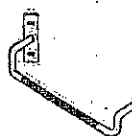
Lengths:
4", 7 1/2",
10", 14", 18"



MANHOLE STEP

BOLT-ON

3/4" Dia. Bar Knurled
16" Wide

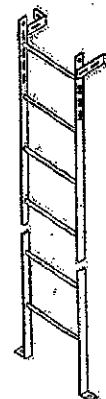


MANHOLE STEP

3/4" Dia. Bar, 28"W

HOOK LADDER

3/4" Dia. Rungs On
12" Centers. Side
Rails Are 3/8"x
1 1/2" Flatbar
(3/8"x2 1/2" When
Ladder Length Is
Over 12'). 12" Clear
Between Rails.



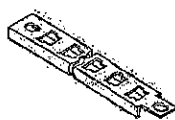
OPTIONAL BOLT-ON LADDER

3/4" Dia. Rungs On
12" Centers. Side
Rails Are 3/8"x
2" Flatbar. 16"
Clear Between Rails.
2 Mounting Brackets
Furnished.

CABLE RACK W/TAB

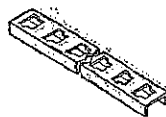
1 1/2"x9/16"x3/16"
1 1/2"x9/16"x3/16"

Lengths:
8 Hole - 15"
14 Hole - 22 1/2"
18 Hole - 30"



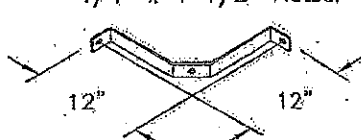
CABLE RACK

Lengths:
20 Hole - 29 3/4"
28 Hole - 41 3/4"
37 Hole - 55 1/4"
40 Hole - 59 3/4"
47 Hole - 70 1/4"
51 Hole - 76 1/4"
54 Hole - 80 3/4"



CORNER CABLE RACK SUPPORT

1/4" x 1 1/2" Flatbar



SCALE: 1:1



Oldcastle Precast®



Cloud Concrete Products

1562 Old Frankfort Pike, Lexington, KY 40504
Phone: 859-259-1484 Fax: 859-233-9351

UAAHARDWARE

FILE NAME: 384UAAHARDWARE.DWG

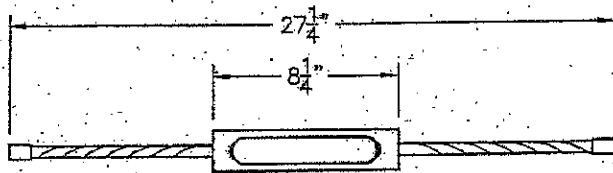
ISSUE DATE: January, 2004

www.oldcastleprecast.com

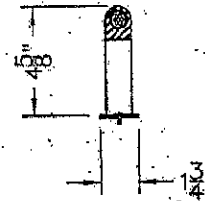
Utility Vault Hardware

Copyright © 2004 Oldcastle Precast, Inc.

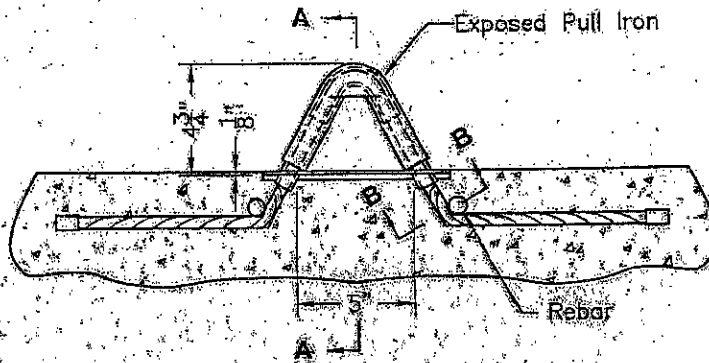
UT-005



TOP VIEW



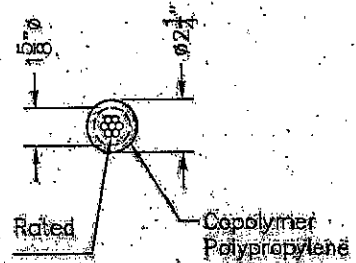
SECTION A-A



Pulling Iron Must be Securely Attached to the Steel Reinforcement Cage as Shown Above.

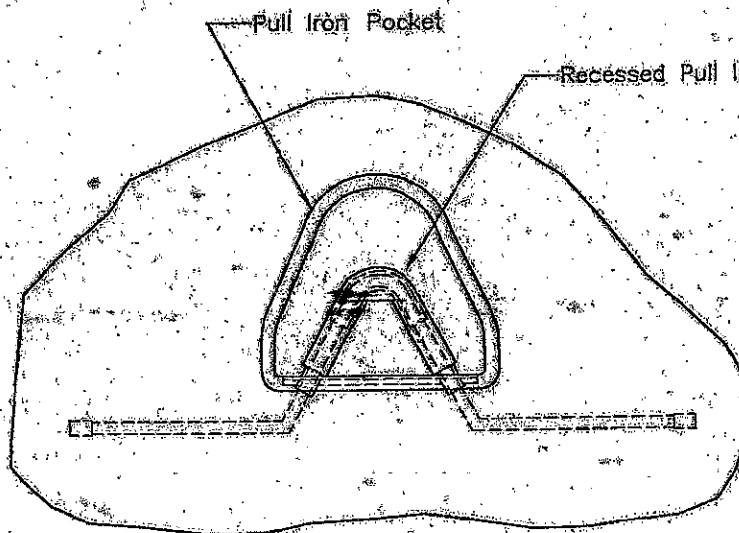
SIDE VIEW

1/2" Cable,
Tensile Strength
Rated
at 270,000 psi

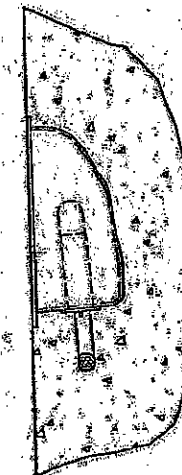


SECTION B-B

Scale: 2x



FRONT VIEW



SIDE VIEW

SCALE: 1-1/2" = 1'-0"



747 Allendale Point, Lexington, KY 40516
Phone 859-250-1484 Fax 859-233-9351

UAAPULLIRON

FILE NAME: 384UAAPULLIRON.DWG

ISSUE DATE: June, 2001

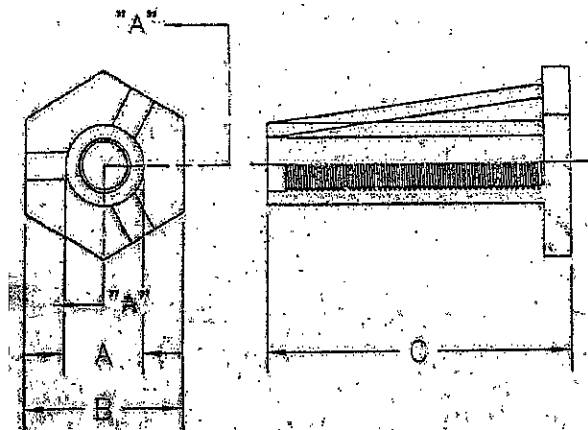
www.oldcastleprecast.com

Pull Iron

UT-035

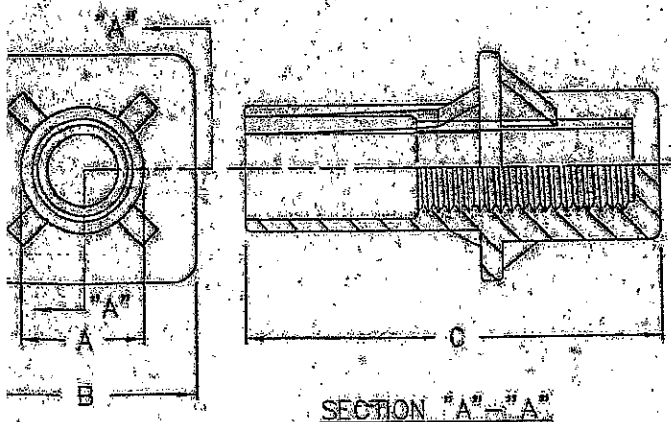
THIS DOCUMENT IS THE PROPERTY OF OLDCASTLE PRECAST. IT IS LOANED TO THE USER OF THIS DOCUMENT. IT IS NOT TO BE REPRODUCED OR TRANSMITTED IN ANY FORM OR BY ANY MEANS, ELECTRONIC OR MECHANICAL, INCLUDING PHOTOCOPYING, RECORDING, OR BY ANY INFORMATION STORAGE AND RETRIEVAL SYSTEM. WITHOUT THE WRITTEN PERMISSION OF OLDCASTLE PRECAST, INC. ALL RIGHTS RESERVED.

FLARE DIECAST STEEL INSERT



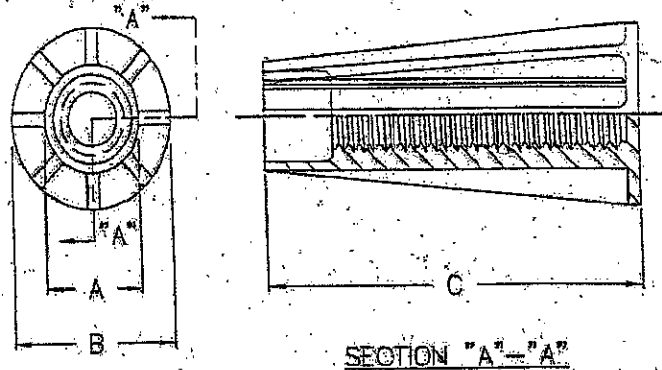
PART NO.	INSERT SIZE	THREAD SIZE	A	B	C
40	1/4	1/4-20	3/8	3/4	1 1/2
43	3/8	3/8-16	9/16	7/8	1 3/8

FLARE DIECAST STEEL INSERT



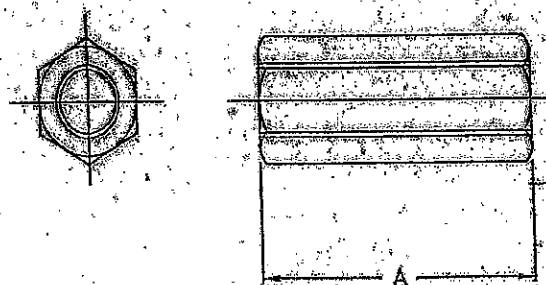
PART NO.	INSERT SIZE	THREAD SIZE	A	B	C
35	1/2	1/2-13	11/16	1 1/4	2 3/8

STANDARD PLASTIC INSERT



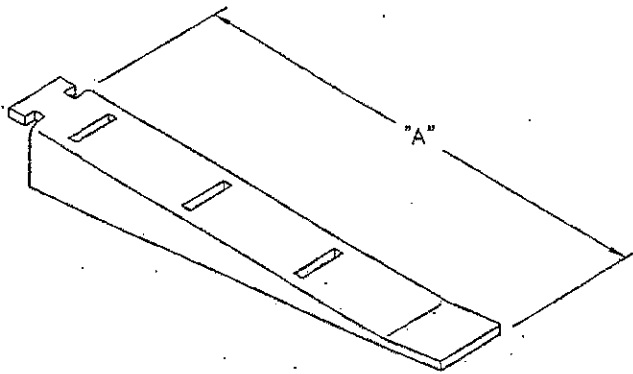
PART NO.	INSERT SIZE	THREAD SIZE	A	B	C
8939	1/4	1/4-20	3/4	1	1 1/2
5370	3/8	3/8-16	3/4	1	1 1/2
4365	1/2	1/2-13	3/4	1 1/4	2 3/4
4350	5/8	5/8-11	15/16	1 3/8	3
4355	3/4	3/4-10	1	1 1/2	3 1/4
4360	1	1-8	1 5/16	1 3/4	3 3/4

STANDARD COUPLER NUT



PART NO.	NUT SIZE	THREAD SIZE	A	PROTECTIVE COATING
8940	1/2	1/2-13	1 3/4	PLATED
8966	5/8	5/8-11	2	PLATED

43/29
10/30

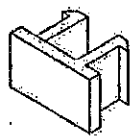
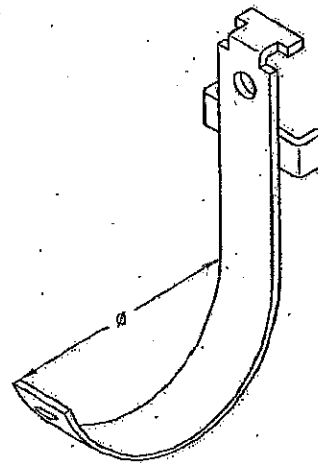


GENERAL NOTES:

1. All hardware Hot Dipped Galvanized Per ASTM A-153 Specifications
2. Formed From 3/16" Steel

STANDARD FLAT HOOK

Item Number	Length "A" Inches
10A35	4
10A36	7 1/2
10A37	10
10A38	14
10A39	18



LOCKING CLIP

20B11

STANDARD J HOOK

Item Number	Ø Of Curve Inches
10A60	2 1/2
10A61	5 1/2

SCALE: 1/4" = 1"



Oldcastle Precast



Cloud Concrete Products

1562 Old Frankfort Pike, Lexington, KY 40504
Phone: 858-259-1484 Fax: 858-233-9351

UAACABLHOOK

FILE NAME: 384UAACABLHOOK.DWG

ISSUE DATE: February, 2002

www.oldcastleprecast.com

Standard Utility Vault Cable Rack Hooks

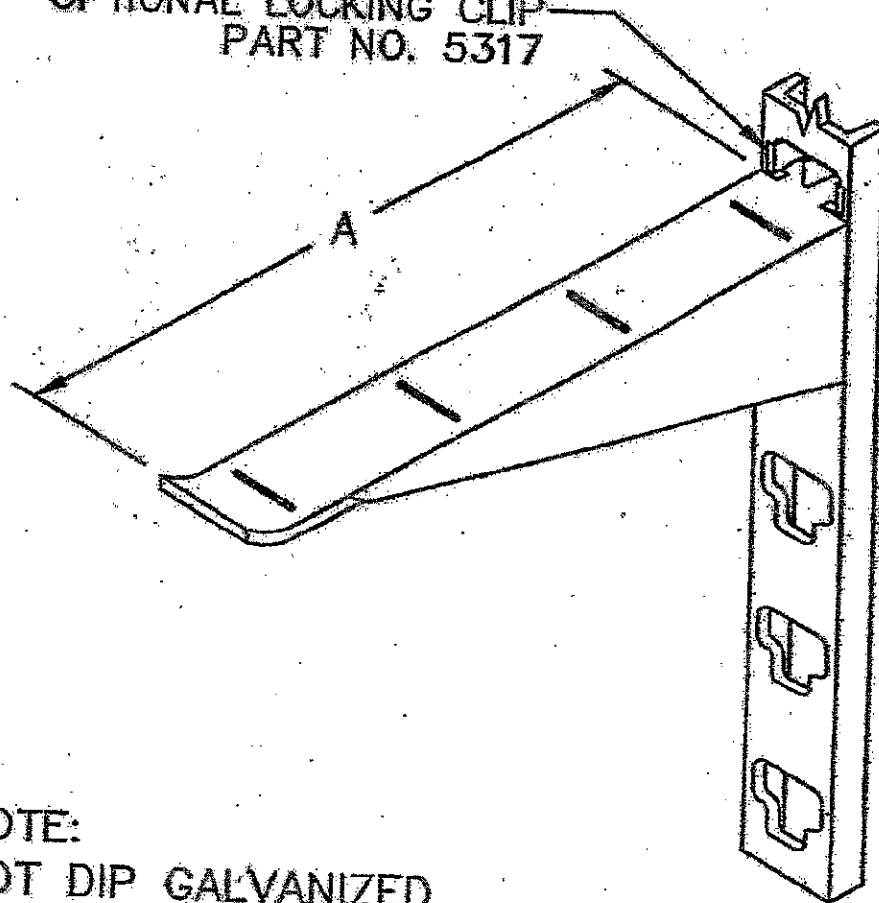
Copyright © 2004 Oldcastle Precast, Inc.

UT-020

CABLE RACK HOOK

PART NO.	LENGTH "A"
4478	4"
4479	7.5"
4481	10"
4482	14"
4483	18"

OPTIONAL LOCKING CLIP
PART NO. 5317

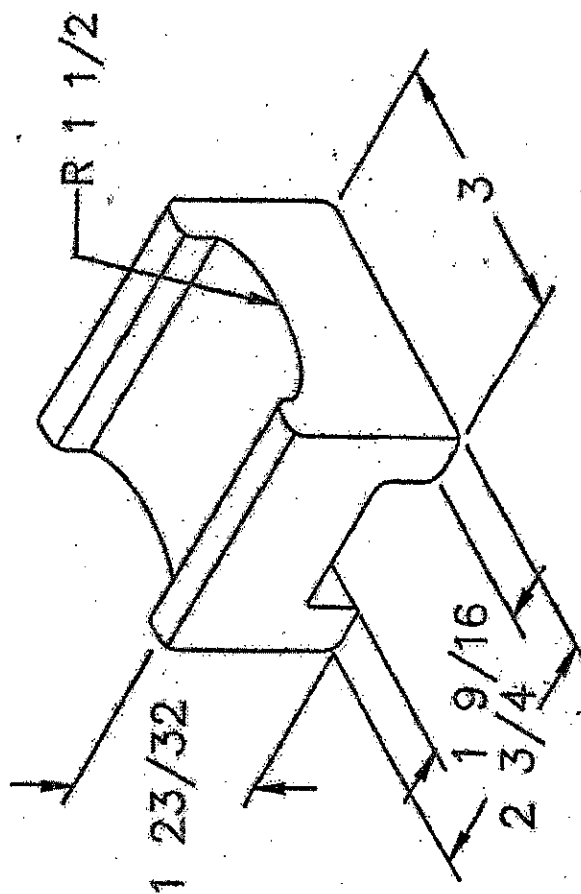


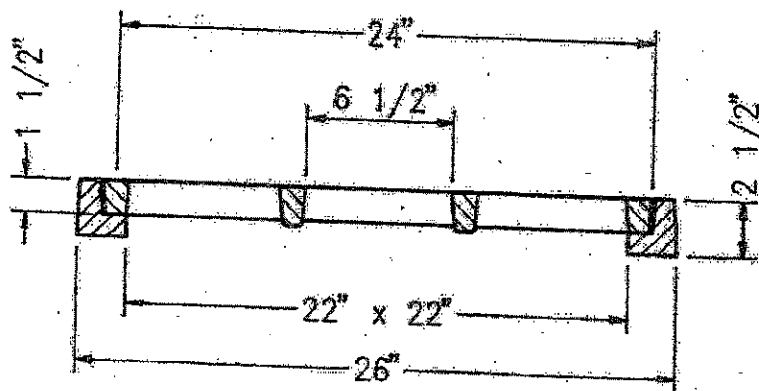
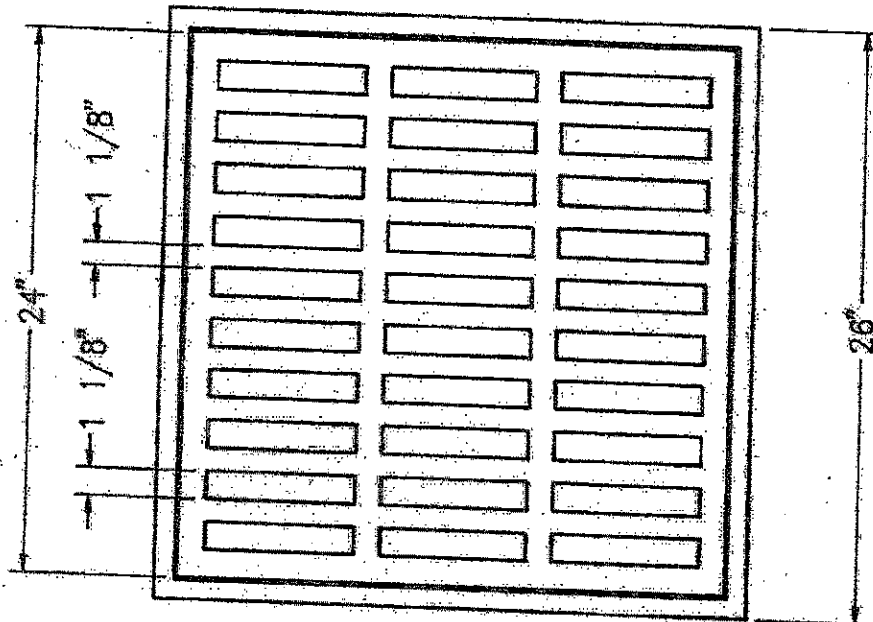
NOTE:
HOT DIP GALVANIZED

**CABLE RACK
INSULATOR
(WHITE GLAZE
PORCELAIN)**

PART NO.

3382





GRATE OPEN AREA: 1.4 SQ. FT.

"Since 1909"

J.R. HOE & Sons

P.O. BOX 1737, MIDDLESBORO, KY. 40065
Ph # 1-800-245-5521

File:

HOE-200

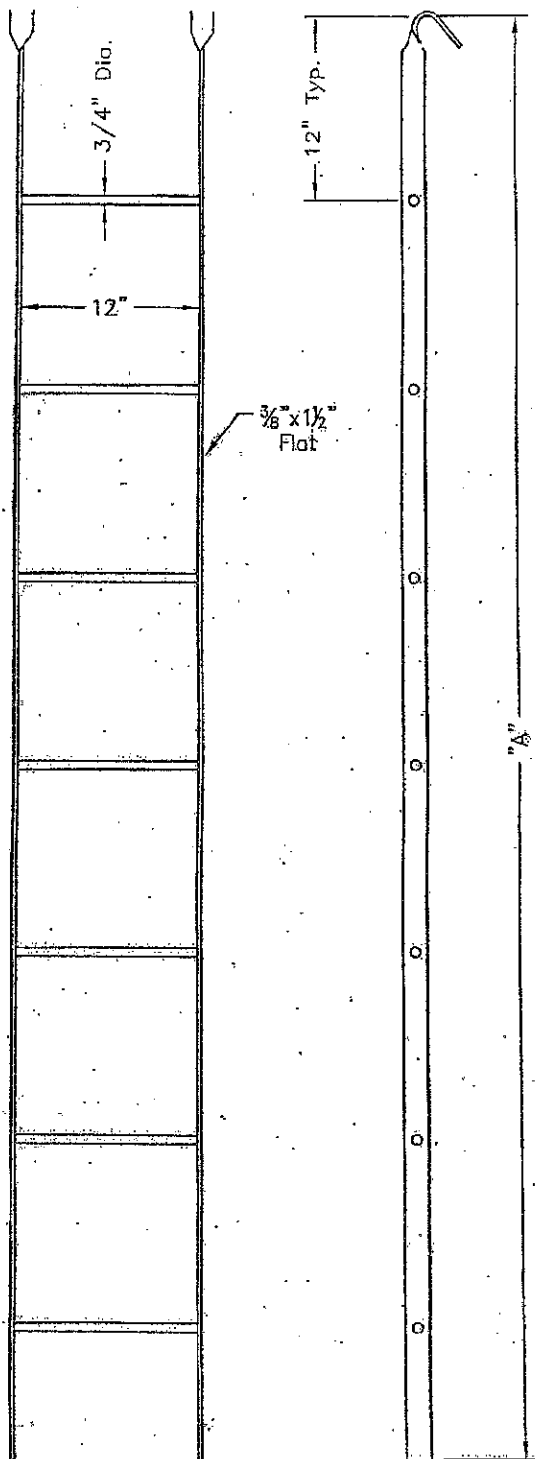
24" x 24" INLET GRATE & FRAME

24. Weight:

200#

Material Type:

ASTM A48 Class 35 Gray Iron

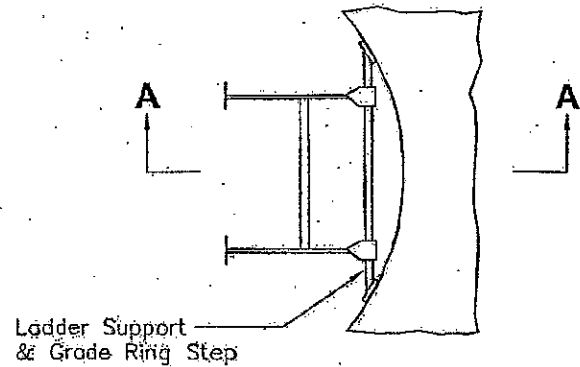


GENERAL NOTES:

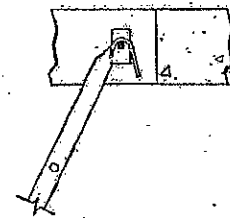
1. Ladders Are Hot Dipped Galvanized Per ASTM A-153 Specifications

2. Ladder Lengths:

Type	"A"
4 Rung	4'-11"
7 Rung	7'-8"
8 Rung	8'-4"
10 Rung	10'-4"
12 Rung	12'-11"
13 Rung	13'-5"



PLAN VIEW



SECTION A-A

SCALE: 1" = 1'



Cloud Concrete Products

1562 Old Frankfort Pike, Lexington, KY 40504
Phone: 859-259-1494 Fax: 859-233-9351

UAALADDER

FILE NAME: 384UAALADDER.DWG

ISSUE DATE: January, 2004

www.oldcastleprecast.com

Utility Manhole Ladders

Copyright © 2004 Oldcastle Precast, Inc.

Modular Splicing Kits

3M™ Modular Splicing Kit

Basic Splice 5815-S

Voltage Rating: 5-25 kV

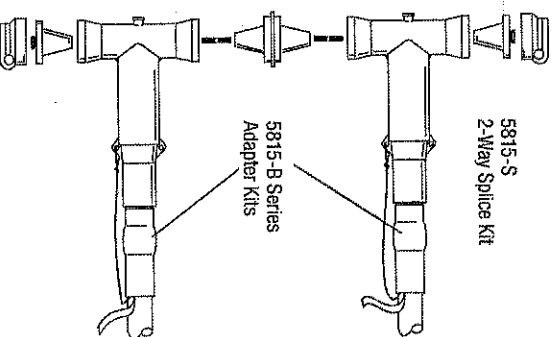
ANSI/IEEE Std. 386

The 5815-S, your basic splice, is for two-way shielded power cable connections. The 5815-S is easy to disconnect, without affecting integrity, while adding or removing cables. It is also an excellent alternative to expensive switches when isolating circuits for maintenance. The "square corner" configuration saves space.

Each 5815-S kit contains:

- 2 tee-modules
- 1 connecting plug
- 2 dead-end plugs
- 2 connecting studs
- 1 instruction booklet
- silicone lubricant

Note: A cable adapter kit is required for each cable.



3M™ Modular Tap Splicing Kit

5815-T Tap (Add On)

Voltage Rating: 5-25 kV

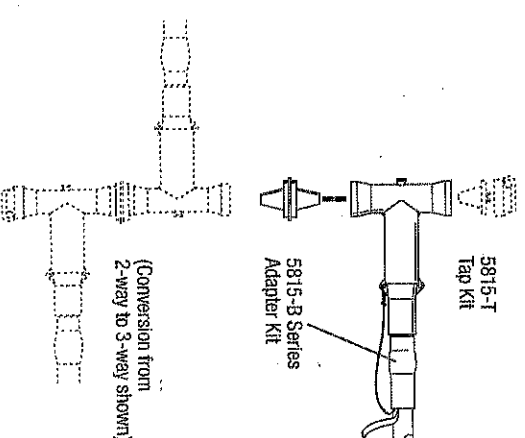
ANSI/IEEE Std. 386

The 5815-T provides an easy way to tap into an existing dead-end or to combine with a 5815-S splice for a three-way installation, while maintaining integrity of the original connection. Add on to the 5815-E equipment connection for an easy method of connecting parallel feeds.

Each 5815-T kit contains:

- 1 tee-module
- 1 connecting plug
- 1 connecting stud
- 1 instruction booklet
- silicone lubricant

Note: A cable adapter kit is required for each cable.



ORDERING INFORMATION

Product Number	Conductor Size (sq. in.)	Range Stranded Al	UPC (054097-)
5815-S	2 AWG-750 kcmil	2 AWG-1000 kcmil	04230
5815-T	2 AWG-750 kcmil	2 AWG-1000 kcmil	04231