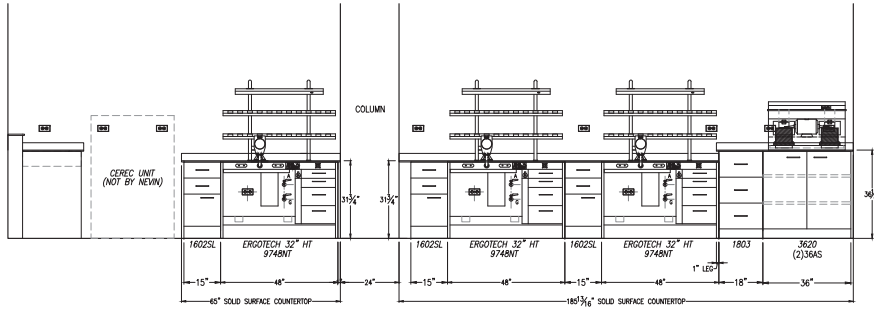
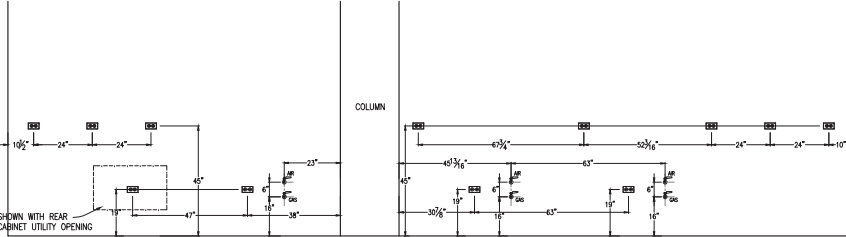


THIS DRAWING WAS PREPARED EXCLUSIVELY FOR YOU WITH THE UNDERSTANDING THAT NEW LABS RESERVES THE SOLE RIGHTS TO ITS PROCESSOR AND USE. ANY REPRODUCTION OR USE OF THIS DRAWING THAT IS DETRIMENTAL TO OUR INTERESTS IS PROHIBITED.

PROJECT: VA HOSPITAL EUGENE	LOCATION: EUGENE, OR	DEALER: N/A	CAD FILE: 214175	DESIGNER: DP
SHEET NO. 1 of 2				
 A MEMBER OF THE DENTALEZ GROUP 8000 SOUTH HALSTED STREET CHICAGO, IL 60609 PHONE: (773) 581-1100 FAX: (773) 581-1101				
10-20-14 NADL National Association of Dental Laboratories		03-28-15 04-20-15		



3 POS. 3 - SOUTH WALL ELEVATION
1" SOLID SURFACE COUNTERTOP



POS. 3 UTILITIES

N O T E: ELECTRIC OUTLETS IN WALLS ARE NOT FURNISHED BY NEVIN. THEY ARE SHOWN AT A HEIGHT TO CLEAR BACK SPLASH OR BACK SHELF ARCHITECT TO COORDINATE QUANTITY AND LOCATION OF ALL WALL ELECTRIC.

ALL WALL HUNG ITEMS EITHER BY NEVINLABS OR BY OTHERS REQUIRE WALL BACKING FOR SUPPORT.

ALL PIPING, WIRING AND FINAL HOOK UPS ARE THE RESPONSIBILITY OF THE OWNER OR OWNER'S AGENT. NEVINLABS WORK STATIONS AND TECHNICIAN BENCHES ARE NOT PRE-WIRED OR PREPPED UNLESS NOTED ON THE DRAWING.

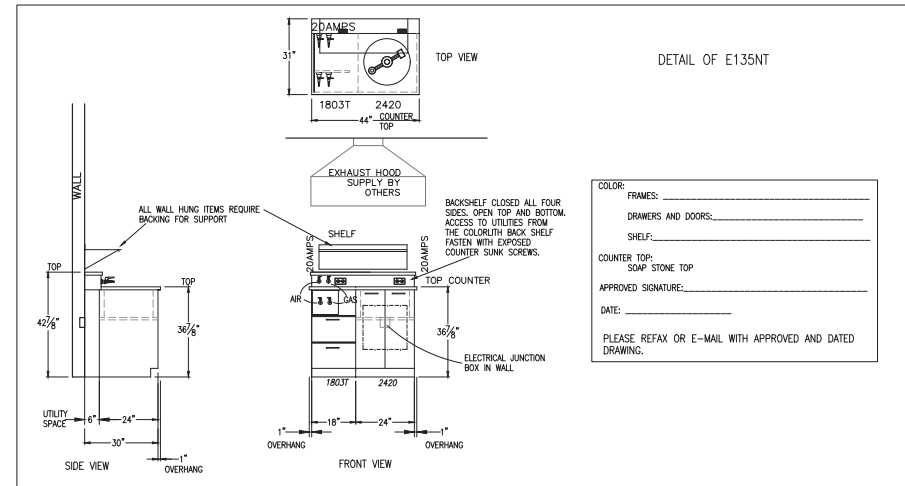
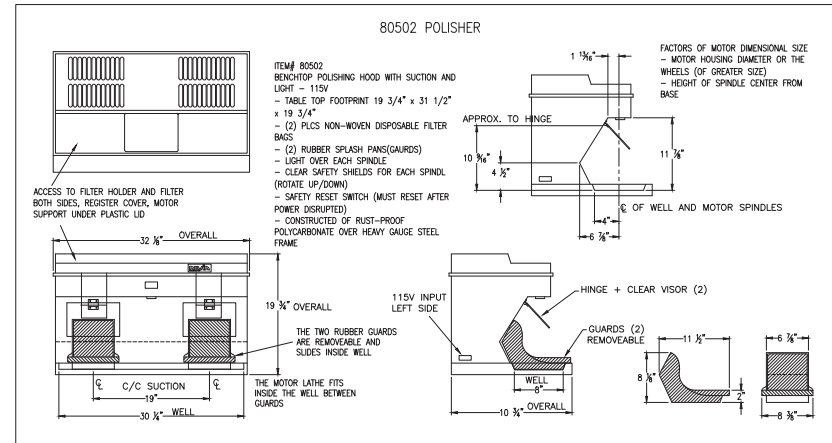
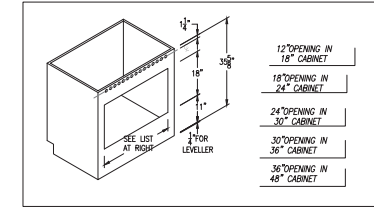
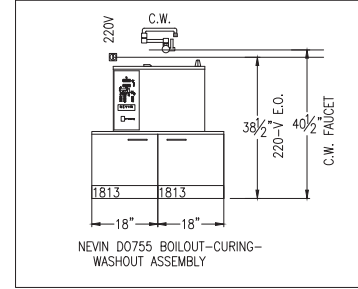
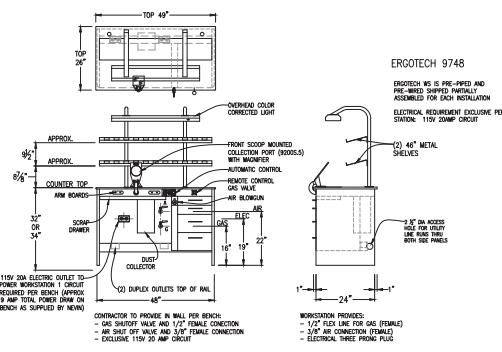
COLOR:
CABINET/FRAME BODIES: _____
DOOR AND DRAWER FRONTS: _____
OVERHEAD LIGHT HOUSING: _____
LIGHT SUPPORTS: _____
LIGHT SHELVES: _____

HANDLES: BRUSHED ALUMINUM

WORKSTATION HEIGHT: 32" AFF.

TOPS: 1 1/2" MARINE EDGE STAINLESS STEEL FOR SINK ASSEMBLIES
1/2" SOLID SURFACE, 1 1/4" SOAP STONE

DETAIL OF ERGOTECH 9748 STATION



THIS DRAWING WAS PREPARED EXCLUSIVELY FOR YOU WITH THE UNDERSTANDING THAT NEVIN LABS RESERVES THE SOLE RIGHTS TO ITS PROCESSOR AND USE. ANY REPRODUCTION OR USE OF THIS DRAWING THAT IS DETRIMENTAL TO OUR INTERESTS IS PROHIBITED.