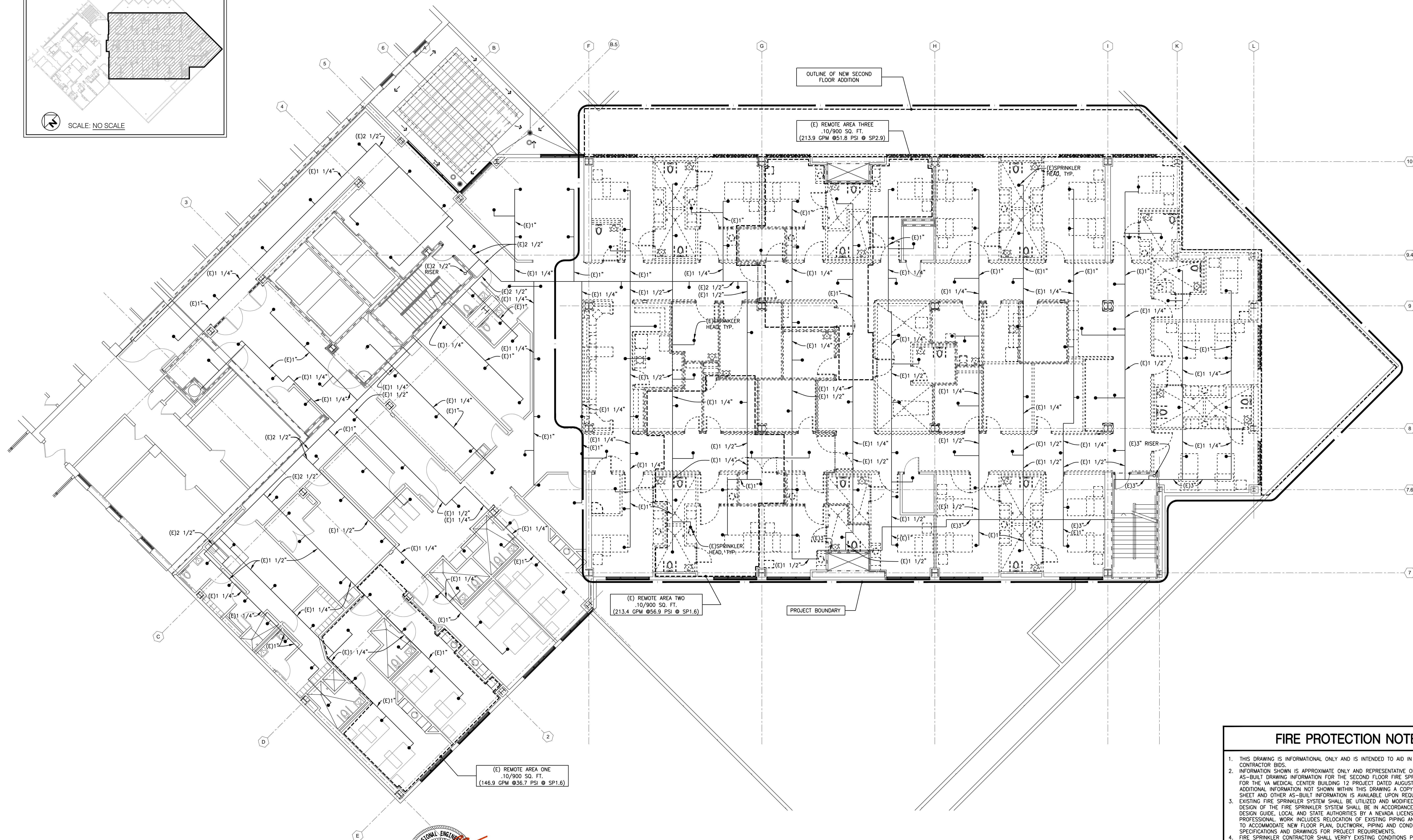
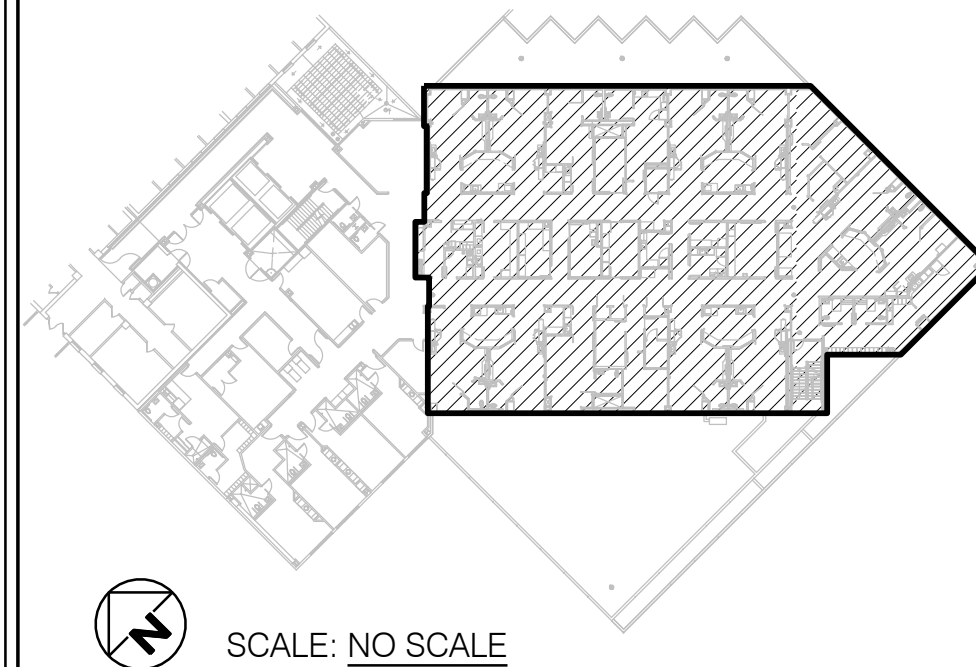


KEYPLAN: BLDG-12 3RD FLOOR



FIRE PROTECTION NOTES:

1. THIS DRAWING IS INFORMATIONAL ONLY AND IS INTENDED TO AID IN THE PREPARATION OF CONTRACTOR BIDS.
2. INFORMATION SHOWN IS APPROXIMATE ONLY AND REPRESENTATIVE OF PORTIONS OF AS-BUILT DRAWING INFORMATION FOR THE SECOND FLOOR FIRE SPRINKLER PIPING PLAN FOR THE VA MEDICAL CENTER BUILDING 12 PROJECT DATED AUGUST 17, 1998. FOR ADDITIONAL INFORMATION NOT SHOWN WITHIN THIS DRAWING A COPY OF THE DRAWING SHEET AND OTHER AS-BUILT INFORMATION IS AVAILABLE UPON REQUEST.
3. EXISTING FIRE SPRINKLER SYSTEM SHALL BE UTILIZED AND MODIFIED FOR NEW CONDITIONS. DESIGN OF THE FIRE SPRINKLER SYSTEM SHALL BE IN ACCORDANCE WITH NFPA 13, VA DESIGN GUIDE, LOCAL AND STATE AUTHORITIES BY A NEVADA LICENSED FIRE PROTECTION PROFESSIONAL. WORK INCLUDES RELOCATION OF EXISTING PIPING AND HEADS AS REQUIRED TO ACCOMMODATE NEW FLOOR PLAN, DUCTWORK, PIPING AND CONDUITS. SEE SPECIFICATIONS AND DRAWINGS FOR PROJECT REQUIREMENTS.
4. FIRE SPRINKLER CONTRACTOR SHALL VERIFY EXISTING CONDITIONS PRIOR TO PERFORMANCE OF WORK.
5. EXACT LOCATIONS OF NEW HEADS SHALL BE REVIEWED AND APPROVED BY THE ARCHITECT.

FIRE PROTECTION - EXISTING SYSTEM WITH DEMOLITION FLOOR PLAN

SCALE: 1/8"=1'-0"

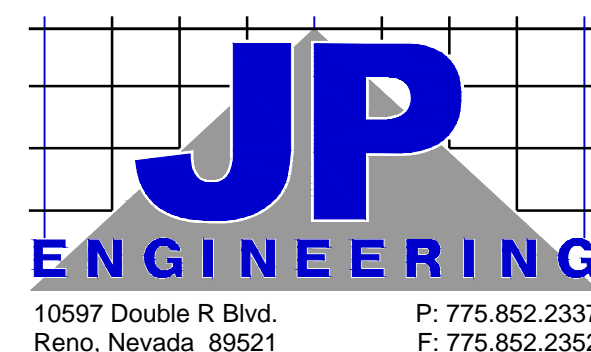
12-FX101



CONSULTANTS:



AINSWORTH ASSOCIATES
MECHANICAL ENGINEERS
3741 BUSINESS DR. 1420 HOLCOMB AVE., SUITE 201
SACRAMENTO, CA 95820 RENO, NV 89502
TEL: 916-737-6014 TEL: 775-329-9100
FAX: 916-737-6015 FAX: 775-852-9105
www.aa-mec.com



10597 Double R Blvd.
Reno, Nevada 89521 P: 775.852.2337
F: 775.852.2352

ARCHITECT/ENGINEERS:



Architecture | Engineering | Planning
Hammel, Green and Abrahamson, Inc.
1410 Rocky Ridge Drive, Suite 250
Roseville, California USA 95661
Telephone 916.787.5100 Facsimile 916.784.7738
Contact: Richard Tannahill

Drawing Title

FIRE PROTECTION - PARTIAL THIRD
FLOOR DEMOLITION

Approved: Project Director

Project Title

WARD 2C REMODEL: INTENSIVE
CARE UNITLocation 975 KIRMAN AVE.
RENO, NV 89520Date
01/30/2015Checked
JSDrawn
RG

Project Number

654-412

Building Number

12

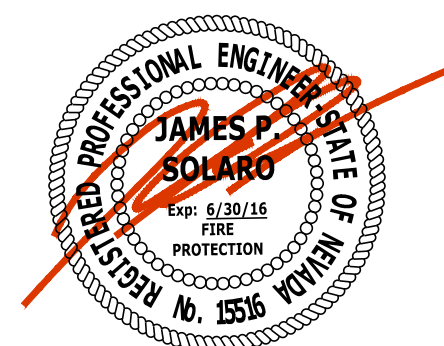
Drawing Number

12-FX101

Dwg. of


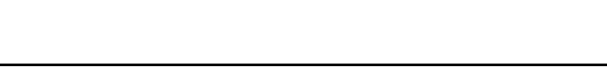



Office of
Construction
and Facilities
Management





SCALE: 1/8"=1'-0"

1
12-FX102

		CONSULTANTS:		 AINSWORTH ASSOCIATES MECHANICAL ENGINEERS 3741 BUSINESS DR. 1420 HOL COMB AVE., SUITE 201 SACRAMENTO, CA 95820 RENO, NV 89502 TEL: 916-737-6014 TEL: 775-329-9100 FAX: 916-737-6015 FAX: 775-329-9105 www.aa-inc.com		 JP ENGINEERING 10597 Double R Blvd. Reno, Nevada 89521 P: 775.852.2337 F: 775.852.2352				ARCHITECT/ENGINEERS:  hGA. Architecture Engineering Planning Hammel, Green and Abrahamson, Inc. 1410 Rocky Ridge Drive, Suite 250 Roseville, California USA 95661 Telephone 916.787.5100 Facsimile 916.784.7738 Contact: Richard Tannahill		<div>Drawing Title FIRE PROTECTION - PARTIAL THIRD FLOOR NEW Approved: Project Director</div>		<div>Project Title WARD 2C REMODEL: INTENSIVE CARE UNIT Location 975 KIRMAN AVE. RENO, NV 89520</div>		<div>Project Number 6S4-412 Building Number 12 Drawing Number 12-FX102 Dwg. of</div>		<div>Office of Construction and Facilities Management  Department of Veterans Affairs</div>	
Revisions:		Date:																	