

2  
12-M501

3  
12-M501

4  
12-M501

7  
12-M501

8  
12-M501

[illegible]

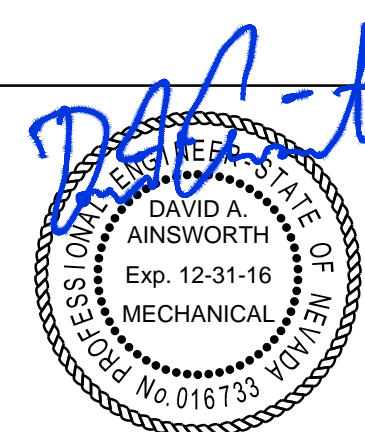
## CONSULTANTS:



**AINSWORTH ASSOCIATES**  
MECHANICAL ENGINEERS

3741 BUSINESS DR.	1420 HOLCOMB AVE., SUITE 201
SACRAMENTO, CA 95820	RENO, NV 89502
TEL: 916-737-6014	TEL: 775-329-9100
FAX: 916-737-6015	FAX: 775-329-9105

[www.aa-me.com](http://www.aa-me.com)



## ARCHITECT/ENGINEERS:



**Architecture | Engineering | Planning**  
**Hammel, Green and Abrahamson, Inc.**  
 1410 Rocky Ridge Drive, Suite 250  
 Roseville, California USA 95661  
 Telephone 916.787.5100 Facsimile 916.784.7738  
 Contact: Douglass Whiteaker

	Drawing Title
--	---------------

## MECHANICAL - DETAILS

Approved: Project Director

Project Title

WARD 2C REMODEL: INTENSIVE CARE UNIT

Location	975 KIRMAN AVE RENO, NV 89520
----------	----------------------------------

Date  
01/30/2015

AVE.  
9520

CH

Drawn  
50

Project Number

654-412
Building Number 12

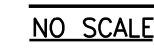
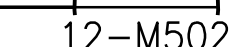
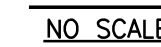
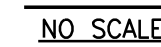
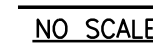
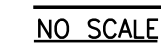
	Drawing Number

12-MISU I  
Dwa of

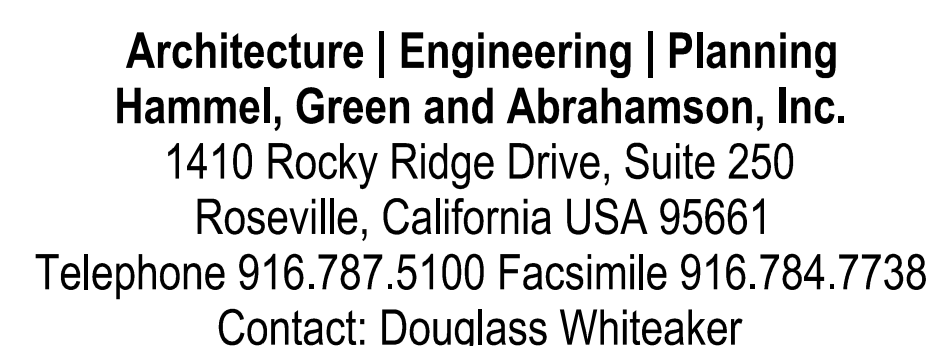
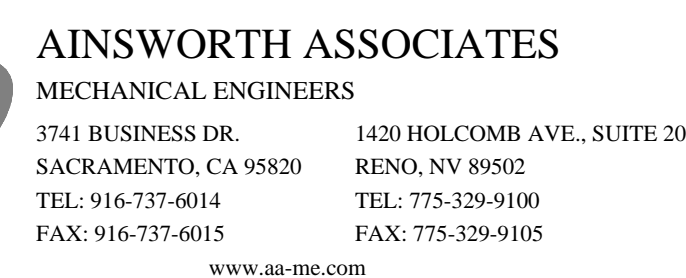
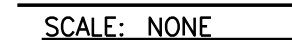
Office of  
Construction  
and Facilities  
Management



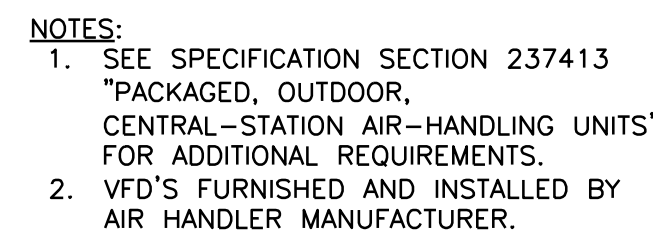




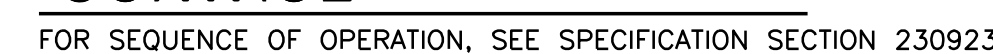
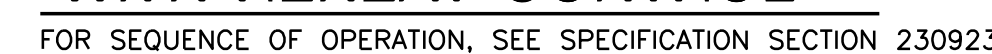
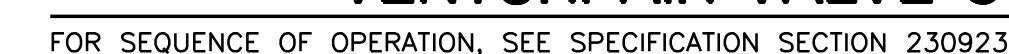
HANGER ROD SCHEDULE	
PIPE SIZE	ROD SIZE
1/2" TO 4"	3/8"Ø
5" TO 8"	1/2"Ø
10" TO 12"	5/8"Ø

 Department of  
Veterans Affairs





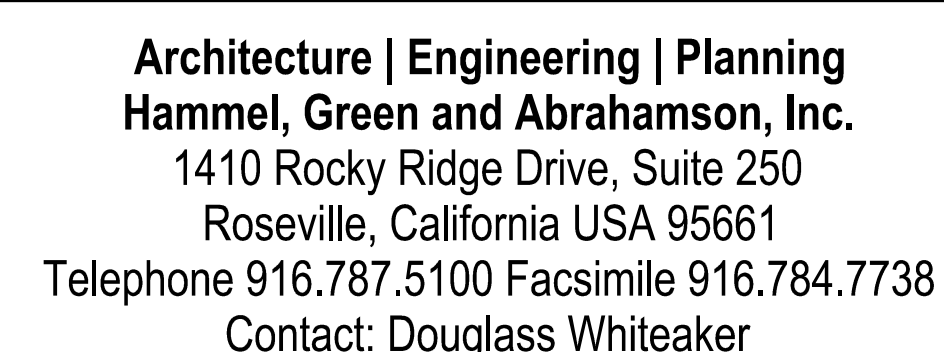
FOR SEQUENCE OF OPERATION, SEE SPECIFICATION SECTION 230923



**AINSWORTH ASSOCIATES**  
MECHANICAL ENGINEERS

3741 BUSINESS DR. 1420 HOLCOMB AVE., SUITE 20  
SACRAMENTO, CA 95820 RENO, NV 89502  
TEL: 916-737-6014 TEL: 775-329-9100  
FAX: 916-737-6015 FAX: 775-329-9105

[www.aa-me.com](http://www.aa-me.com)

 Department of  
Veterans Affairs



[illegible]

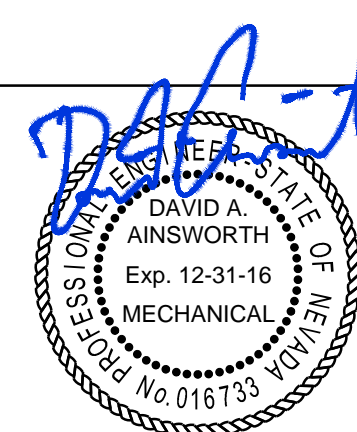
CONSULTANTS:



**AINSWORTH ASSOCIATES**  
MECHANICAL ENGINEERS

3741 BUSINESS DR. SACRAMENTO, CA 95820 TEL: 916-737-6014 FAX: 916-737-6015	1420 HOLCOMB AVE., SUITE 201 RENO, NV 89502 TEL: 775-329-9100 FAX: 775-329-9105
-------------------------------------------------------------------------------------	------------------------------------------------------------------------------------------

[www.aa-me.com](http://www.aa-me.com)



ARCHITECT/ENGINEERS:



**Architecture | Engineering | Planning**  
**Hammel, Green and Abrahamson, Inc.**  
 1410 Rocky Ridge Drive, Suite 250  
 Roseville, California USA 95661  
 Telephone 916.787.5100 Facsimile 916.784.7738  
 Contact: Douglass Whiteaker

	Drawing Title
--	---------------

# ZONING PLAN

Approved: Project Director

	Project Title
--	---------------

WARD 2C REMODEL: INTENSIVE  
CARE UNIT

Location	975 KIRMAN AVE. RENO, NV 89520
----------	-----------------------------------

Chem

Drawn

ER

Project Number

654-412
Building Number 12

	Drawing Number

12-M

Office of  
Construction  
and Facilities  
Management



BID DOCUMENTS - FINAL