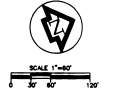


Area of work

- NOTES:**
- ① USE #6 THIN CONDUCTORS AND #10 GROUND FOR ALL SITE LIGHTING CIRCUITS.
 - ② USE 1" CONDUIT FOR ALL SITE LIGHTING CONDUCTORS.
 - ③ PROVIDE PHOTOCELL ON FIXTURE TO TURN ON/OFF THE CIRCUIT.
 - ④ LUMINAIRE HAS BEEN REMOVED.
 - ⑤ CIRCUIT NOT CONTROLLED BY PHOTOCELL.

- SUPPLEMENTARY LEGEND**
- NEW LUMINAIRE.
 - LUMINAIRE PREVIOUSLY REMOVED AND TO BE REINSTALLED.
 - LC- EXISTING CONDUIT AND CONDUCTORS.
 - R- EXISTING UNDERGROUND CONDUIT. REMOVE CONDUCTORS & ABANDON CONDUIT.
 - HJ- NEW CONDUIT AND CONDUCTORS.
 - EXISTING LUMINAIRE.
 - POWER PULLBOX, 12" W X 22" L.
 - LIGHTING PULLBOX, 12" W X 22" L.



RECORD DRAWINGS
INFORMATION BULLETIN NO.108
DATE 5/16/95

THESE RECORD DRAWINGS HAVE BEEN PREPARED BASED ON INFORMATION PROVIDED BY OTHERS. THE ARCHITECT/ENGINEER HAS NOT VERIFIED THE ACCURACY OF THIS INFORMATION AND SHALL NOT BE RESPONSIBLE FOR ANY ERRORS OR OMISSIONS WHICH MAY BE INCORPORATED HEREIN AS A RESULT.

Gordon H. Chong + Associates
Architects/Engineers
300 Sutter Street, Suite 100
San Francisco, CA 94104
415.433.0800
415.433.4344 fax

PACIFIC ENGINEERING
CONSULTING ENGINEERS
1001 Northern Blvd., Redwood, CA 94061
Tel: 415.965-2244
Fax: 415.965-2245

Drawing No. **DOMS000001**
WE PLAN LUMINaires AND SIGNAL
Approved Area Project Manager

Project No. **95-000001**
DOMS000001
DOMS000001
DOMS000001

Building Number **307**
Drawing No. **1P**
Scale **1/8" = 1'-0"**

YASCO, Inc. 4815 CA
Bldg. 1410 173

Date **24 JULY 1995**
Project No. **640-0000**
Sheet No. **347-EL10**
Bldg. 1410 173

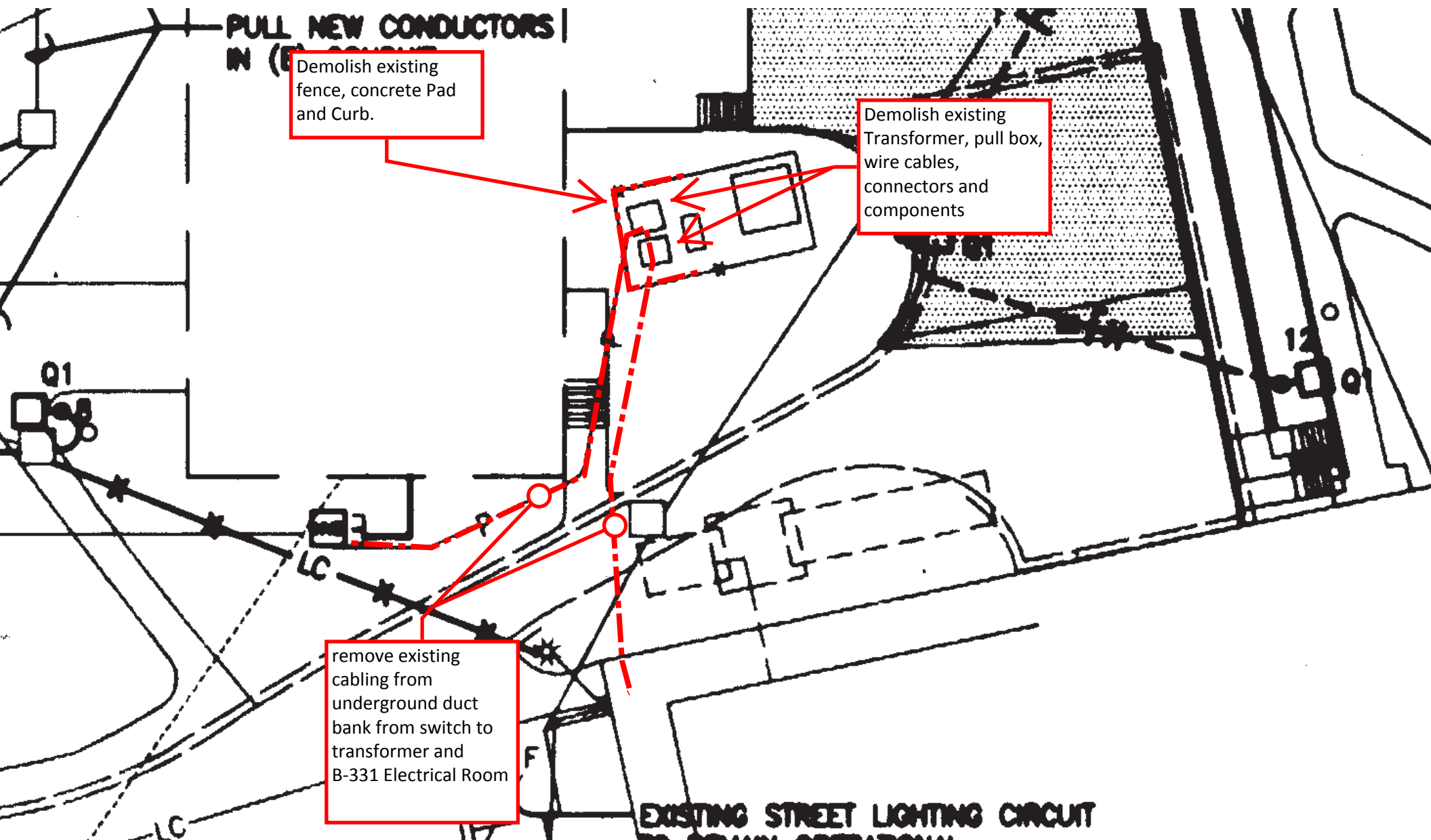




remove existing cabling from underground duct bank from switch to transformer and B-331 Electrical Room

Demolish existing Transformer, pull box, wire cables, connectors and components

Demolish existing fence, concrete Pad and Curb.





Install new cabling in existing underground duct bank from switch to transformer and B-331 Electrical Room

install new 12' fence, extend concrete Pad to building edge and Curb per SOW

install 6' min width sliding gate for access

install new Transformer, pull box, wire cables, connectors and components per SOW

install 6' min width
sliding gate for access

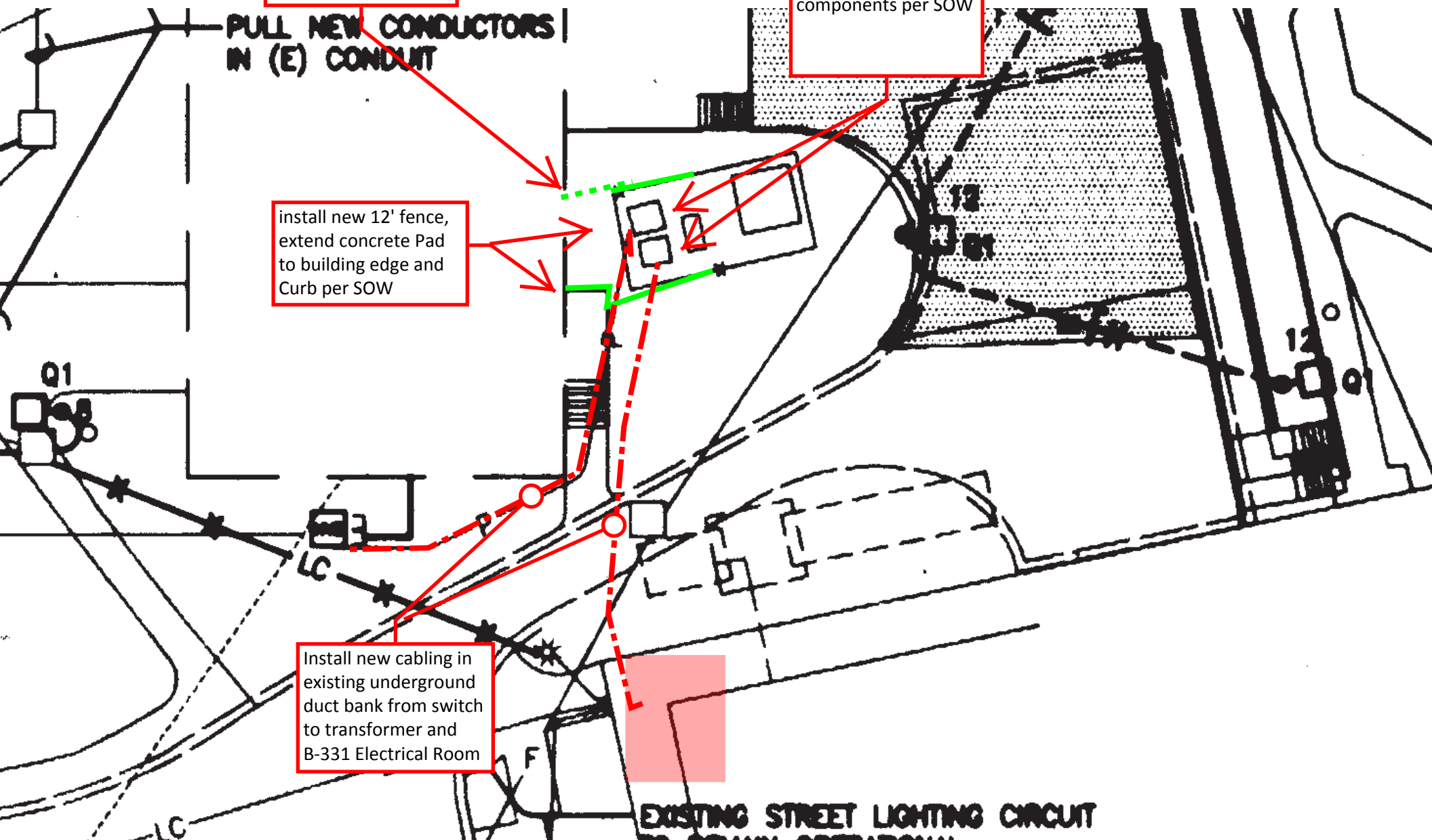
install new
Transformer, pull box,
wire cables,
connectors and
components per SOW

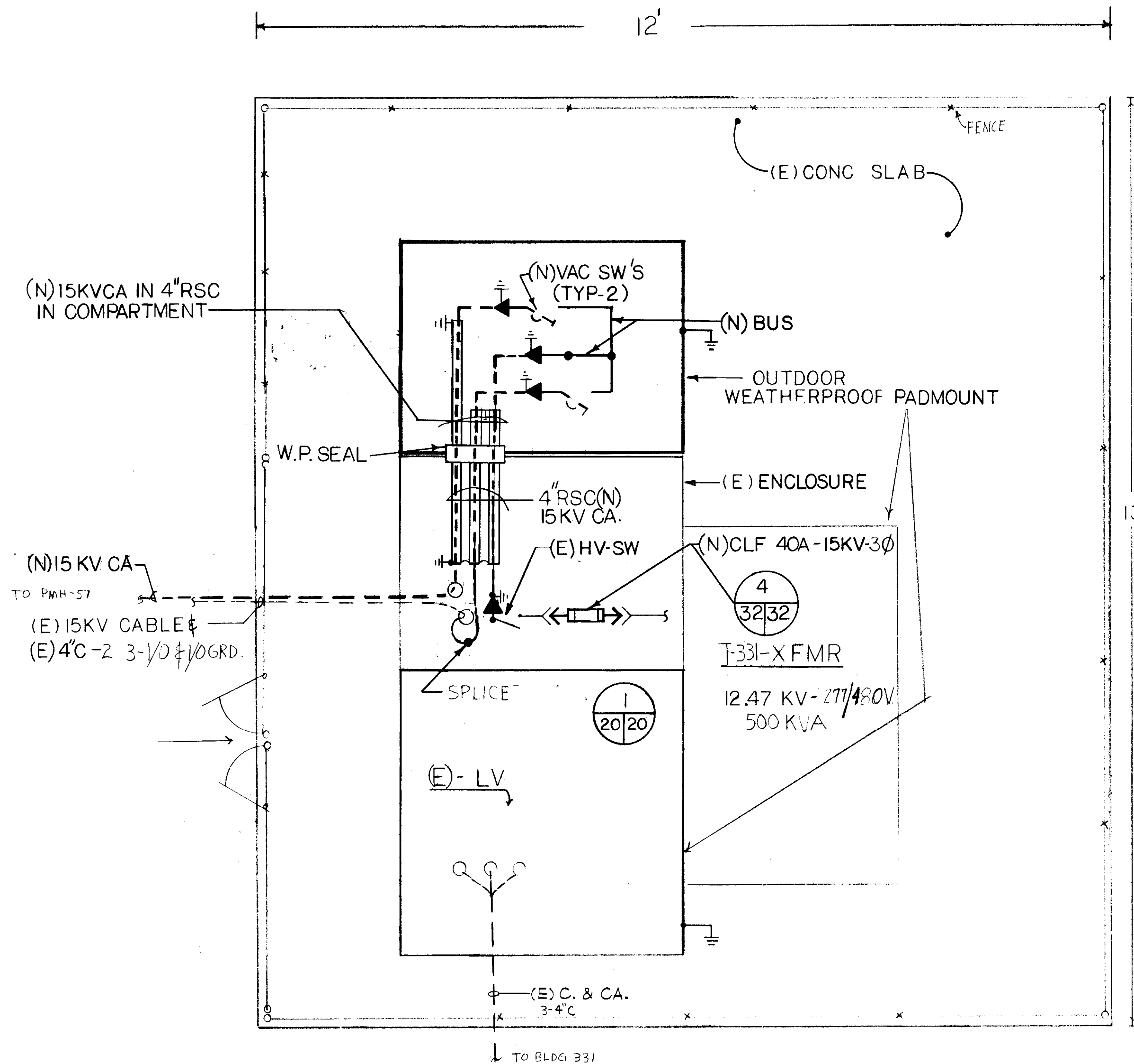
**PULL NEW CONDUCTORS
IN (E) CONDUIT**

install new 12' fence,
extend concrete Pad
to building edge and
Curb per SOW

Install new cabling in
existing underground
duct bank from switch
to transformer and
B-331 Electrical Room

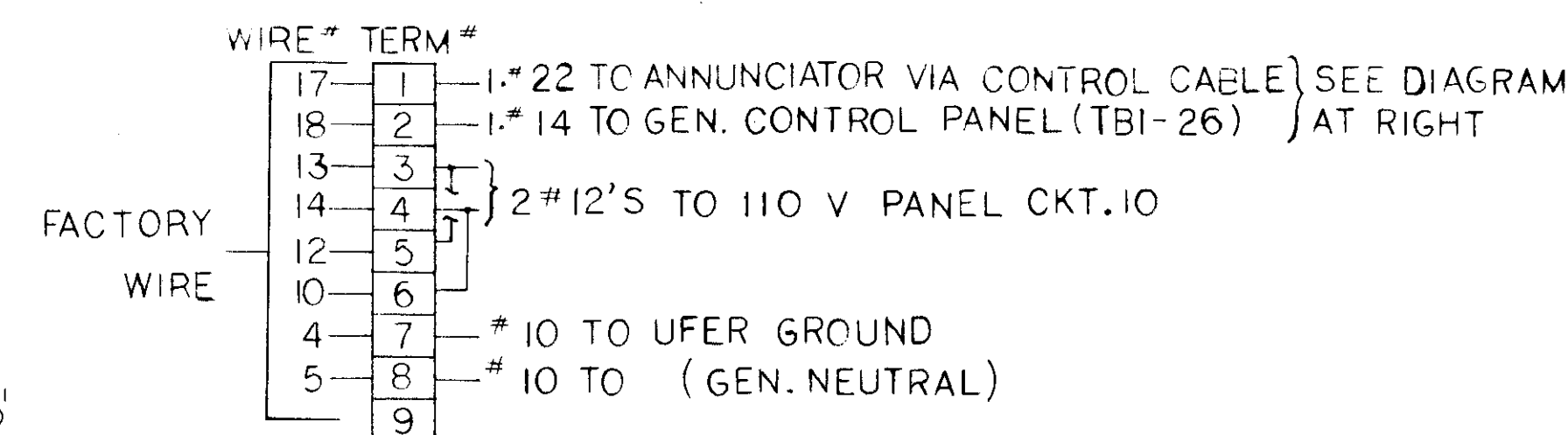
EXISTING STREET LIGHTING CIRCUIT



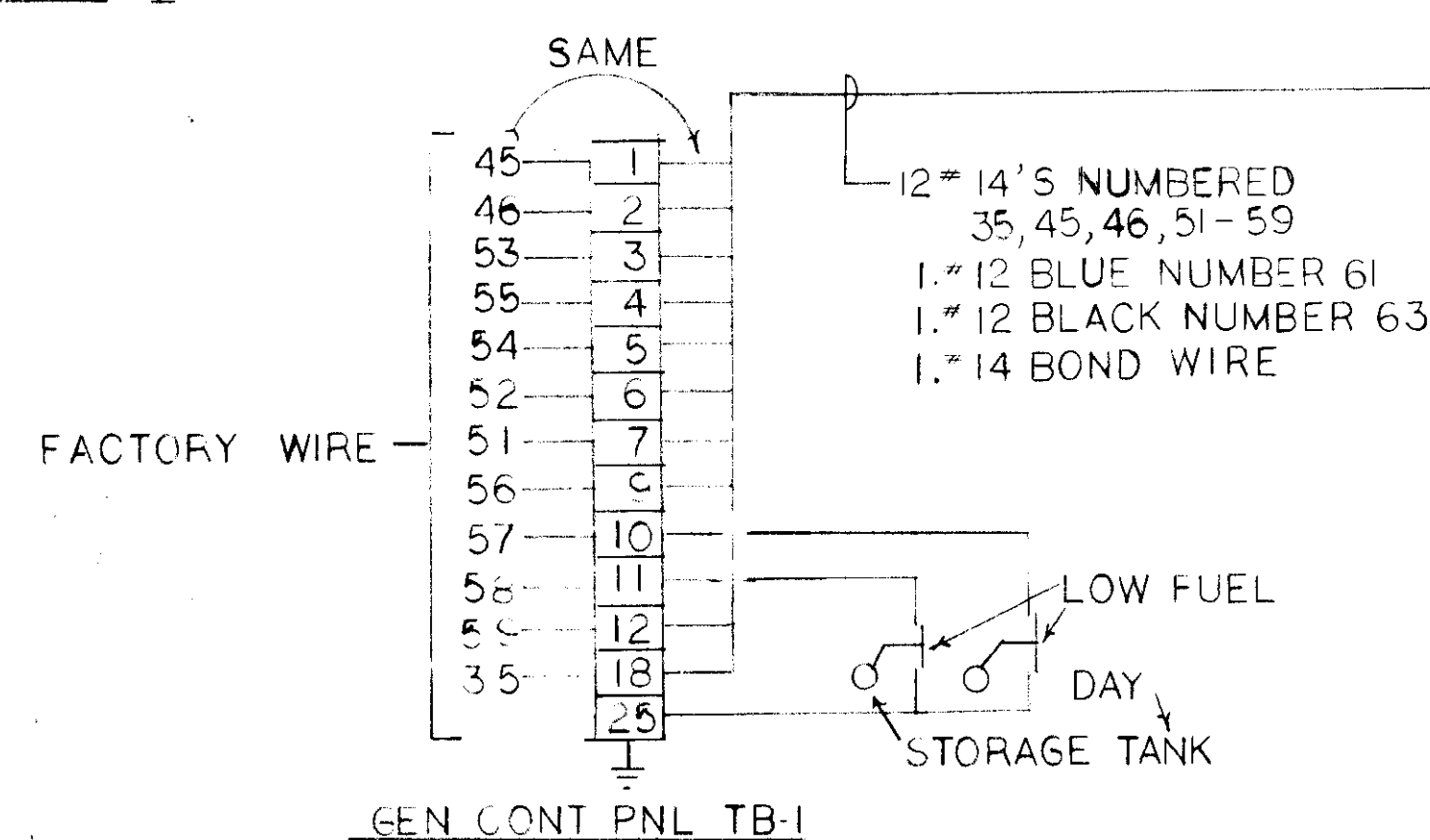
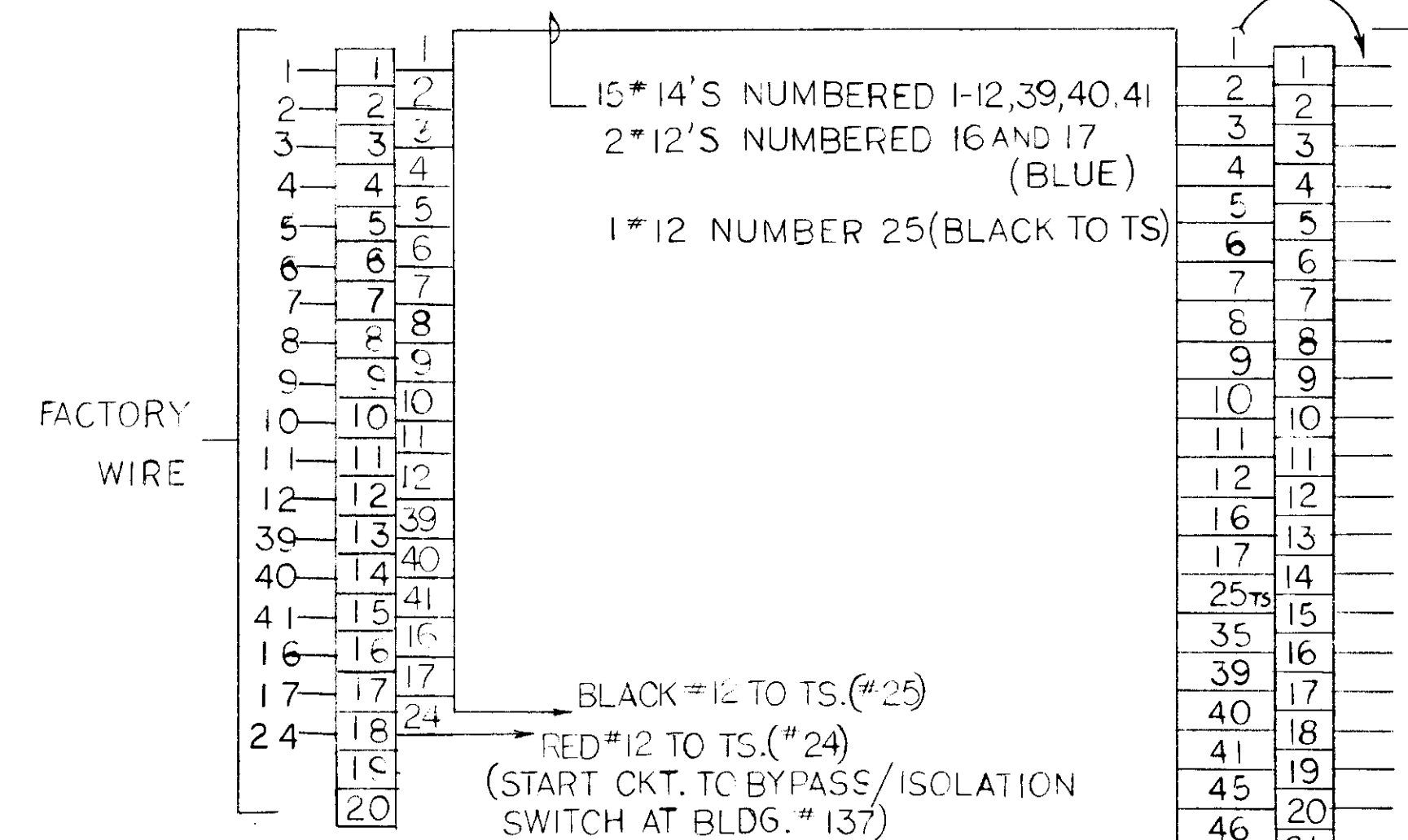


DET 8 B-331
5/14 NTS

HIGH RESISTANCE GROUNDING NETWORK

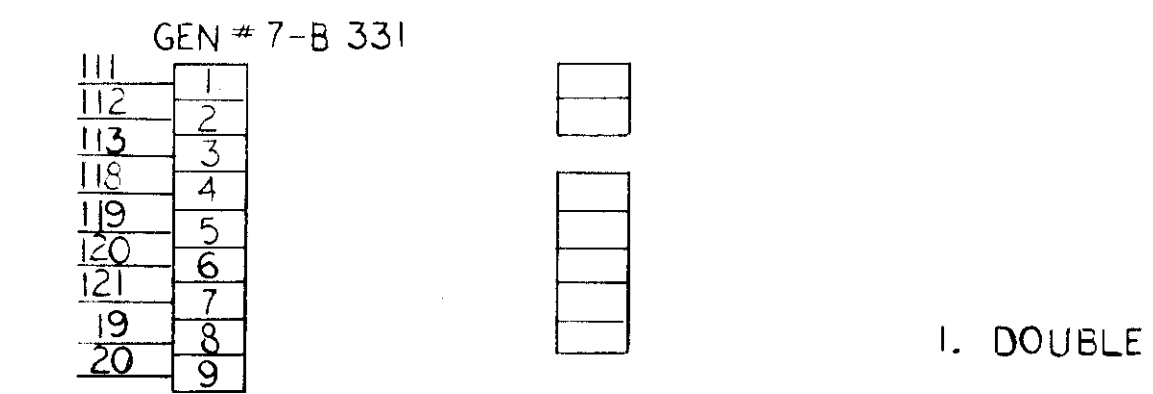
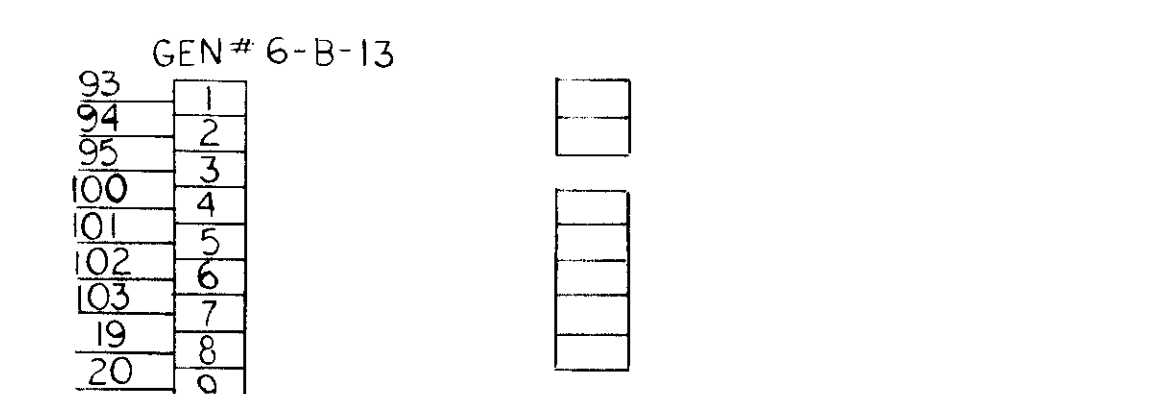
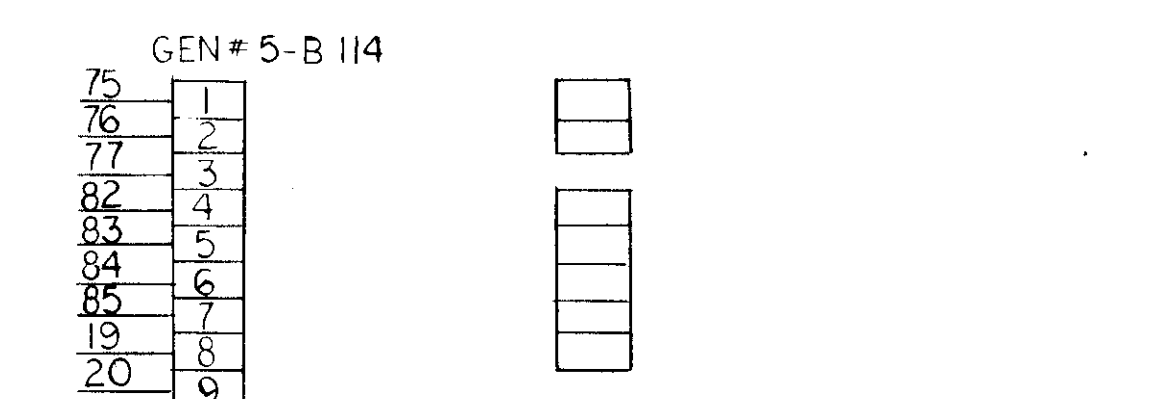
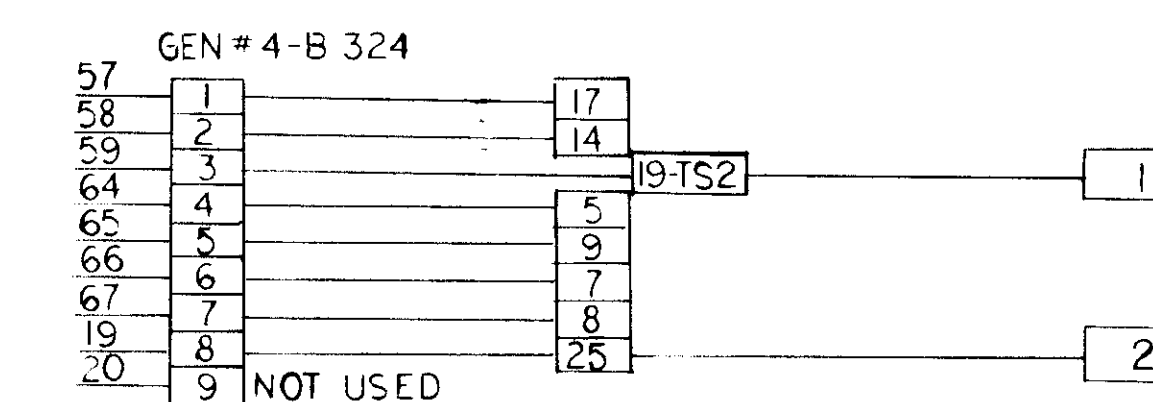
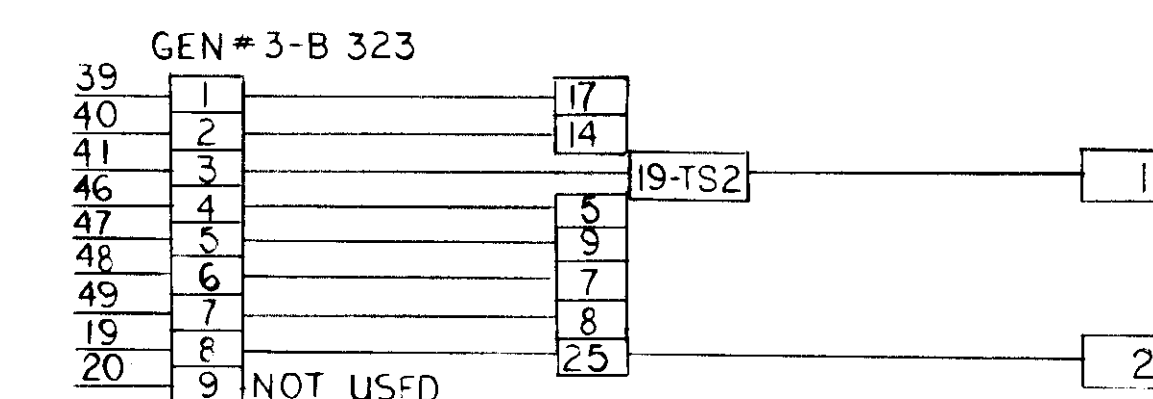
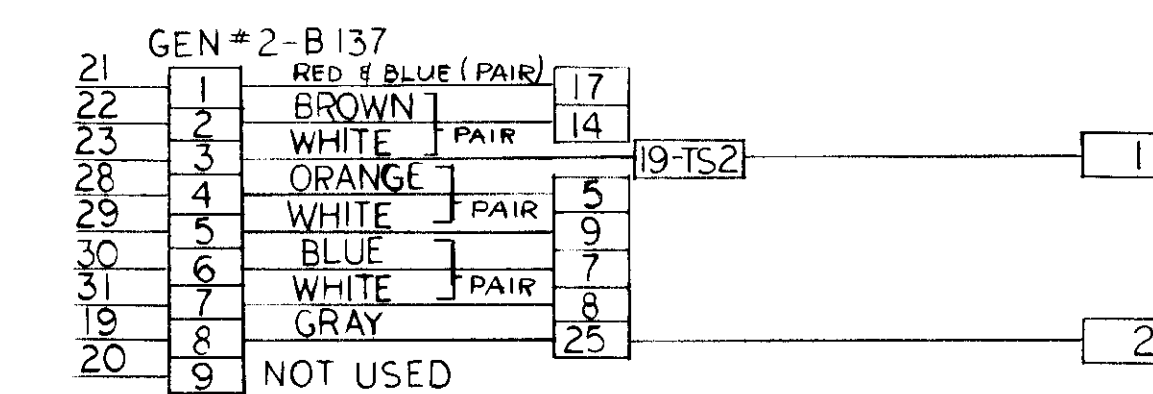
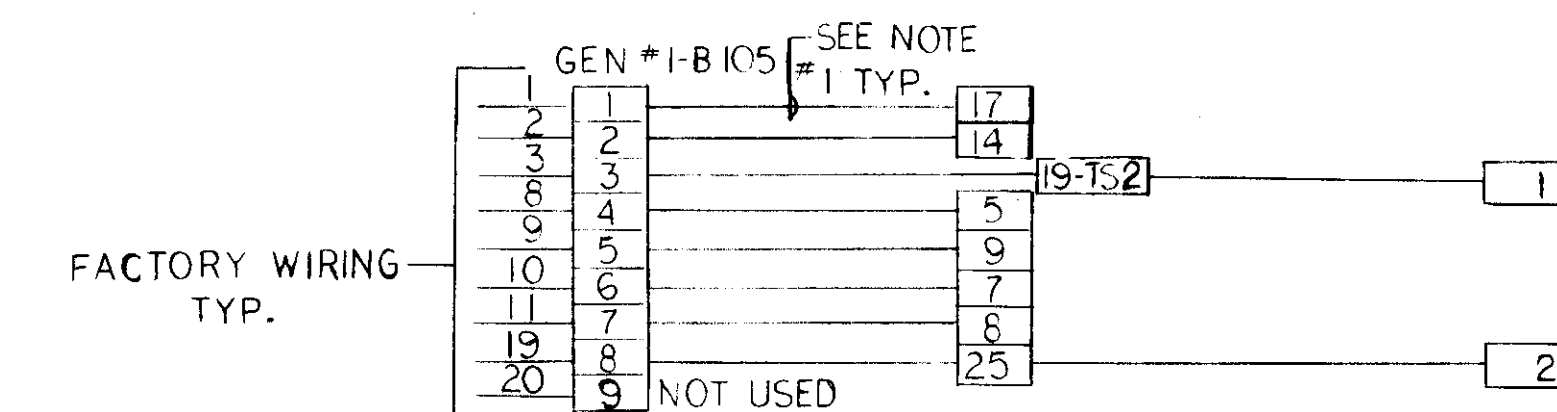


GENERATOR CONTROL PANEL TB-2



GEN. CONT. PNL TB-1

TERMINAL BLOCKS SHOWN BELOW ARE AT ANNUNCIATOR IN BOILER HOUSE
TERMINAL BLOCKS SHOWN BELOW ARE AT GENERATOR CONTROL PANEL IN GENERATOR BUILDINGS
TERMINAL BLOCKS SHOWN BELOW ARE AT HI-RESISTANCE GROUND PANELS IN GENERATOR BUILDINGS



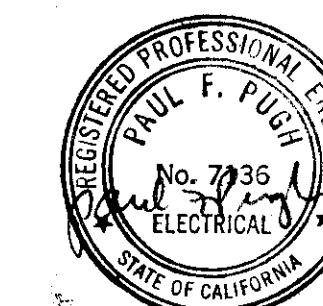
1. DOUBLE UP 2. #22'S FOR COMMON

TYPICAL FOR GEN 1-7

- COMMON
- ENGINE RUNNING
- GROUND FAULT
- LOW OIL PRESSURE
- HIGH TEMPERATURE
- ENGINE OVERSPEED
- OVER CRANK
- GROUND
- NOT USED

GENERAL NOTES

- SEE SHEET #3 FOR SYMBOLS.
- SEE SHEET #4 FOR ABBREVIATIONS AND GENERAL NOTES.
- (N) 15 KV CA DEMOTES (N) 3-1/2-2/0 15 KV AND 1-1/2 2/0 TW.



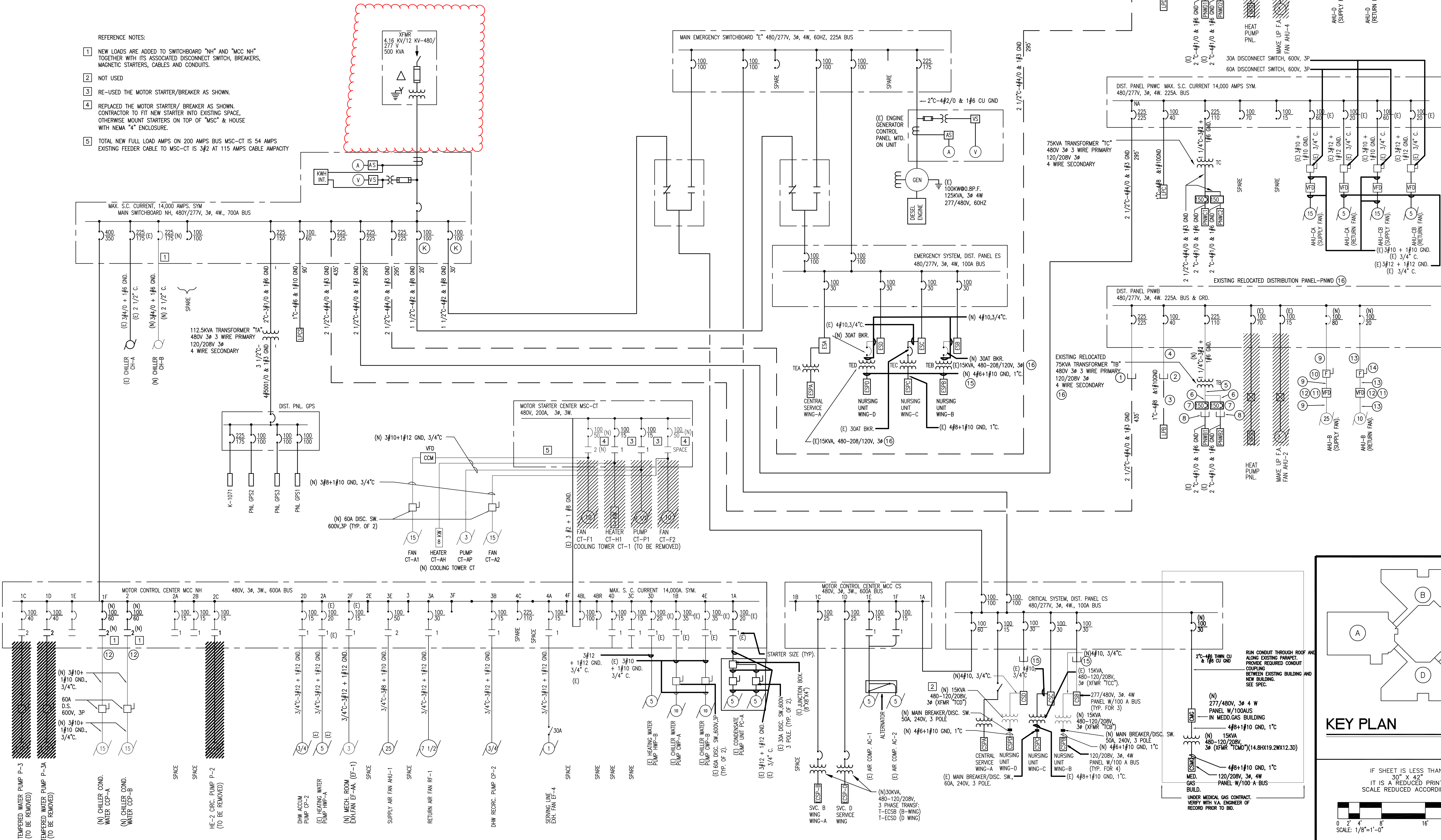
NO.	DATE	DESCRIPTION
1	6/1/81	AS BUILT
REVISIONS:		
SHEET TITLE		
DETAILS - B-331		
BLDG. NO. PROJECT TITLE		
B-331 EMERGENCY GENERATOR & UPDATE ELECTRICAL POWER SYSTEM - VETERANS ADMINISTRATION MEDICAL CENTER-MENLO PARK, CALIF. (MPD)		
DRAWN	CHECKED	DATE
HL	PR, C.R. AY	1-22-79
PAUL F. PUGH & ASSOCIATED PROFESSIONAL ENGINEERS		DRAWING NO.
4082 SEQUOYAH ROAD OAKLAND, CA 94605 (415) 838-6015		E-14
APPROVED PROJECT DIRECTOR		DWG. 14 OF 36
VETERANS ADMINISTRATION		PROJECT NO.
640-063		
LOCATION		
MENLO PARK, CALIFORNIA		

GENERATOR CONTROLS & REMOTE ANNUNCIATOR WIRING

NTS

5-5-1-0806

NEW SYSTEMS AND EQUIPMENT ARE INDICATED WITH HEAVY LINES.
EXISTING SYSTEMS AND EQUIPMENT ARE SHOWN WITH LIGHTER LINES.
EQUIPMENT AND SYSTEMS TO BE DEMOLISHED ARE HATCH-LINED.

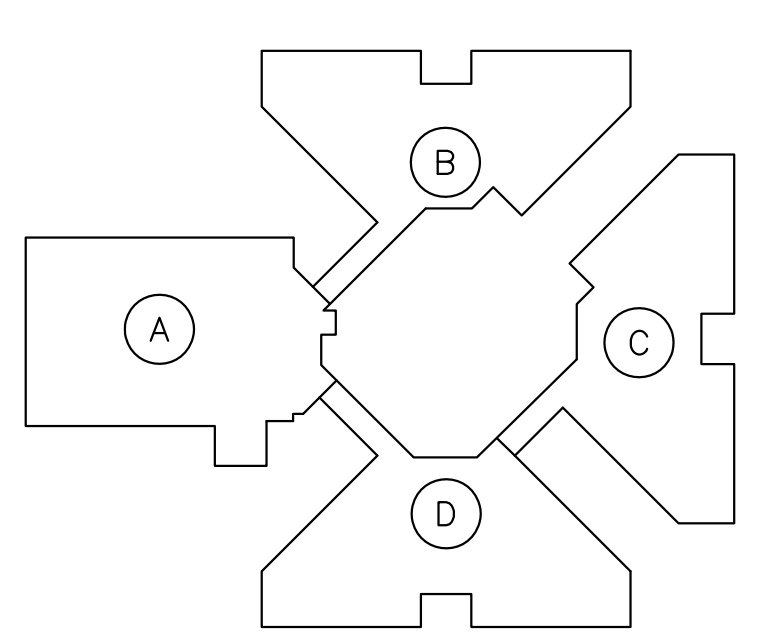


REFERENCE NOTES:

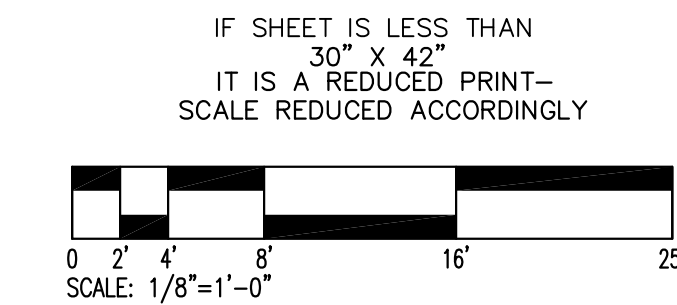
- NEW LOADS ARE ADDED TO SWITCHBOARD "NH" AND "MC NH" TOGETHER WITH ITS ASSOCIATED DISCONNECT SWITCH, BREAKERS, MAGNETIC STARTERS, CABLES AND CONDUITS.
- NOT USED
- RE-USED THE MOTOR STARTER/BREAKER AS SHOWN.
- REPLACED THE MOTOR STARTER/ BREAKER AS SHOWN. CONTRACTOR TO FIT NEW STARTER INTO EXISTING SPACE. OTHERWISE MOUNT STARTERS ON TOP OF "MSC" & HOUSE WITH NEMA "4" ENCLOSURE.
- TOTAL NEW FULL LOAD AMPS ON 200 AMPS BUS MSC-CT IS 54 AMPS. EXISTING FEEDER CABLE TO MSC-CT IS 3/2 AT 115 AMPS CABLE AMPACITY.

REFERENCE NOTES:

- VERIFY INTERCEPTION POINT OF EXISTING CONDUIT AND WIRE. EXTEND NEW CONDUIT AND WIRE TO NEW DISTRIBUTION PANEL-PNWD. TYPE AND SIZE OF NEW WIRE AND CONDUIT TO MATCH EXISTING 2 1/2"-44/0 & 1#3 GND.
- VERIFY INTERCEPTION POINT OF EXISTING CONDUIT AND WIRE. EXTEND NEW CONDUIT AND WIRE TO NEW DISTRIBUTION PANEL-PNWD. TYPE AND SIZE OF NEW WIRE AND CONDUIT TO MATCH EXISTING 1"-4#8 & 1#10 GND.
- EXISTING 1"-4#8 & 1#10 GND.
- NEW 1"-4#8 & 1#10 GND.
- NEW 2 1/2"-44/0 & 1#3 CU GND.
- NEW 2 1/2"-44/0 & 1#3 CU GND.
- EXISTING RELOCATED 150A/240V 3 POLE CIRCUIT BREAKER ENCLOSURE.
- VERIFY INTERCEPTION POINT OF EXISTING CONDUIT AND WIRE. EXTEND NEW CONDUIT AND WIRE TO RELOCATED 150A/3P C.B. ENCLOSURE. TYPE AND SIZE OF NEW WIRE AND CONDUIT TO MATCH EXISTING 2"-4#1/0 & 1#6 CU GND.
- NEW 1 1/4"-3#3 & 1#8 CU GND.
- NEW 60A, 600V 3 POLE DISCONNECT SWITCH WITH 60 AMP FR5-R FUSES, IN NEMA 3R ENCLOSURE.
- PROVIDE NEW ALLEN BRADLEY "VFD" OR APPROVED EQUAL FOR THE FOLLOWING FAN MOTORS AS FOLLOWS:
a. AHU-D (AHU-B) SUPPLY FAN 25HP AND RETURN FAN 10 HP.
- PROVIDE CONTROL POWER TRANSFORMER, 100VA, 480VAC TO 120V FOR MOTOR CONTROL (LOCATE AT MCC CUBICLE) & 120VAC TO 12V FOR VFD CONTROL CIRCUITS. DISCONNECT EXISTING CONTROL PANEL FROM PANELBOARD.
- 3/4"-3#10 & 1#10 CU GND.
- NEW 30A, 600V 3 POLE DISCONNECT SWITCH WITH 20 AMP FR5-R FUSES, IN NEMA 3R ENCLOSURE.
- VERIFY INTERCEPTION POINT OF EXISTING CONDUIT AND WIRE AT EXISTING PENTHOUSE LOCATION. TO BE DEMOLISHED. EXTEND NEW CONDUIT AND WIRE TO NEW LOCATION OF RESPECTIVE EQUIPMENT IN NEW ELECTRICAL ENCLOSURE LOCATION.
- EXISTING EQUIPMENT TO BE REMOVED AND RELOCATED IN NEW ELECTRICAL ENCLOSURE LOCATION.



KEY PLAN



AREAS SHOWN ARE REPRESENTATIVE OF EXISTING CONDITIONS. SPECIFIC WORK WITHIN AREAS SHOWN SHOULD BE FIELD VERIFIED.

GEVORK CONSULTING ENGINEERING
285 E. IMPERIAL HWY. SUITE 208
FULLERTON, CALIFORNIA 92635
TEL: (714) 680-6182 FAX: (714) 680-6183
TEL: (949) - 857-1169



Job Title: REFINISH INTERIOR, BUILDING 331, WING "B" & "D" NHCU, PH-2, MENLO PARK, DIVISION

Sheet Title: BUILDING 331 SINGLE LINE DIAGRAM CONST.
VETERANS AFFAIRS PALO ALTO HEALTH CARE SYSTEM STATION 640, PALO ALTO, CA 94304

Drawn By:	G.M.	Date:		Checked By:		Date:	
Submitted By:		Date:		Approved By:		Date:	
Scale:	AS NOTED	Using Service	Approval:			Date:	
Reviewed For	Fire & Safety Compliance:					Date:	
Reviewed For	Maintenance & Repair Compliance:					Date:	
Reviewed For	Security Compliance:					Date:	
AS-BUILT		4/19/04					
Final Construction Documents		8/1/01		Drawing No.:			

SYMBOL	DESCRIPTION	INITIAL	DATE	Proj. No:	640-99-101M	Sheet	E050	Of	
--------	-------------	---------	------	-----------	-------------	-------	------	----	--

SINGLE LINE DIAGRAM CONSTRUCTION