

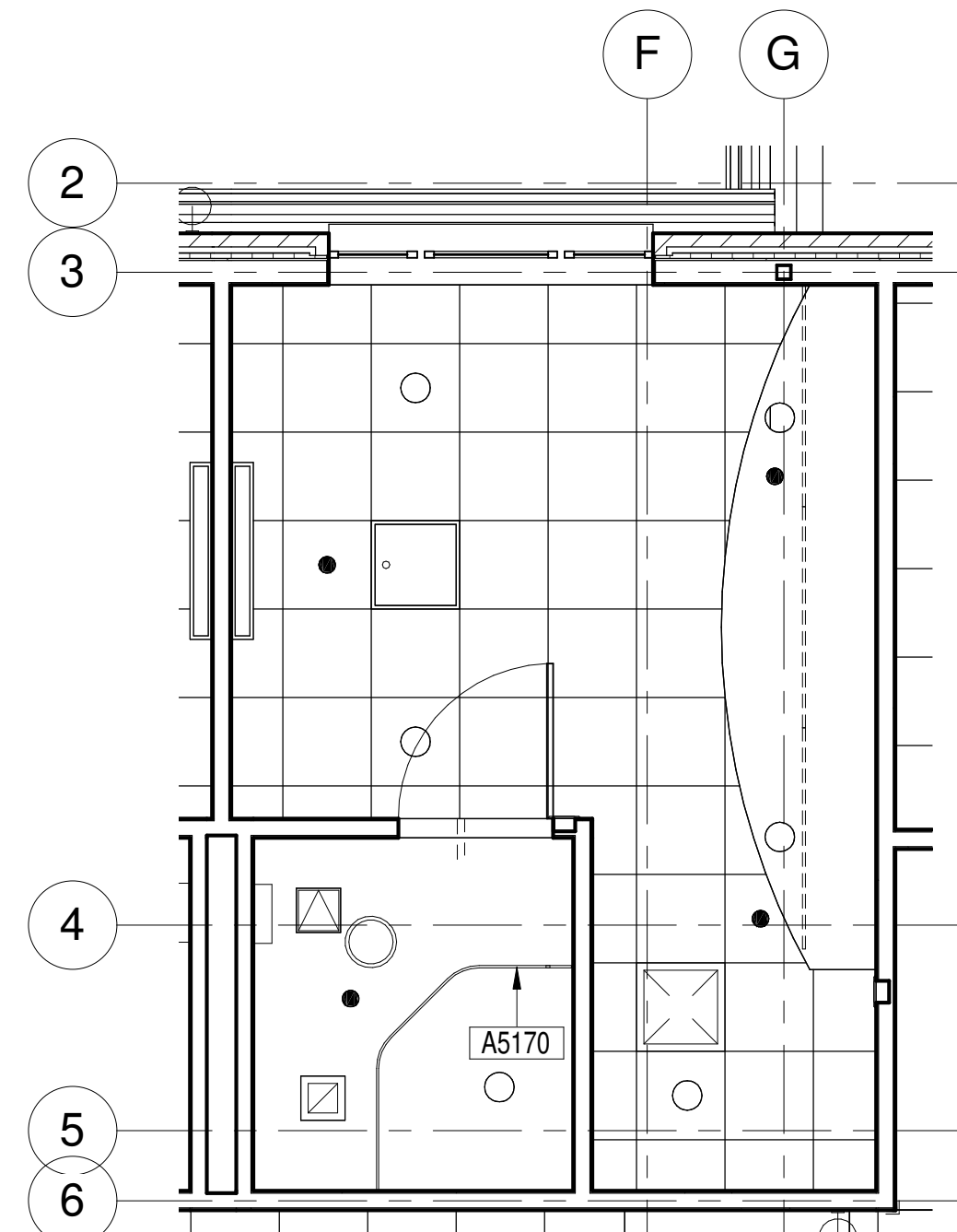
three inches = one foot  
one and one half inches = one foot  
one inch = one foot  
three quarters inch = one foot  
one half inch = one foot  
one quarter inch = one foot  
three eighths inch = one foot  
one eighth inch = one foot

EQUIPMENT SCHEDULE						INSTALLED BY:	PURCHASED BY:
Quantity	Symbol / JSN	AI	Equipment	Description			
11	A1066	CC	MIRROR	MIRROR, WHEELCHAIR ACCESSIBLE, 24" W x 36" H		GC	GC
10	A5030	CC	FOLD DOWN SHOWER SEAT	SEAT, FOLD-DOWN SHOWER TYPE, STAINLESS STEEL, SIZE/SHAPE AS REQUIRED		GC	GC
9	A5075	VV	HAND SANITIZER DISPENSER	DISPENSER, SOAP, LIQUID, WALL-MOUNTED, AND HAND SANITIZER		GC	GC
12	A5075A	VV	SOAP DISPENSER	DISPENSER, SOAP, LIQUID, WALL-MOUNTED, AND HAND SANITIZER		GC	GC
9	A5106	CC	SHARPS CONTAINER	UNIT, WASTE DISPOSAL, SHARPS, WALL-MOUNTED, WITH GLOVE DISPENSER		GC	GC
20	A5109	CC	PULL DOWN GRAB BAR	GRAB BARS, FOLD UP YPE, 1.25 DIA., STAINLESS STEEL, WATER CLOSET ACCESSIBLE.		GC	GC
22	A5110	CC	ADA GRAB BAR	GRAB BARS, 1.25 DIA., STAINLESS STEEL, 2 WALL, SHOWER USE		GC	GC
10	A5170	CE7042	SHOWER CURTAIN CEILING TRACK	White Aluminum		GC	GC
10	A5207	CC	TOWEL BAR	BAR, TOWEL, 1" DIA., STAINLESS STEEL, SURFACE MOUNTED		GC	GC
13	CG001	159	9' HT. CORNER GUARD	Surface Mount, 90°, 3in. wing		GC	GC
10	CG040	CC	12" Medicine Cab	CABINET, MEDICINE, LOCKABLE, WALL-MOUNTED, COMPARTMENTALIZED FOR MEDICATION		GC	VA
1	K2515	CC	DISHWASHER	DISHWASHER, COMMERCIAL GRADE, UNDER COUNTER		GC	VA
1	K3401	CC	RANGE HOOD	RANGE, COOKTOP, ELECTRIC, 4 BURNER FRONT CONTROLS, DOMESTIC, 208 VOLT, 40 AMP, SINGLE PHASE, WITH HOOD, INDUCTION TYPE.		GC	VA

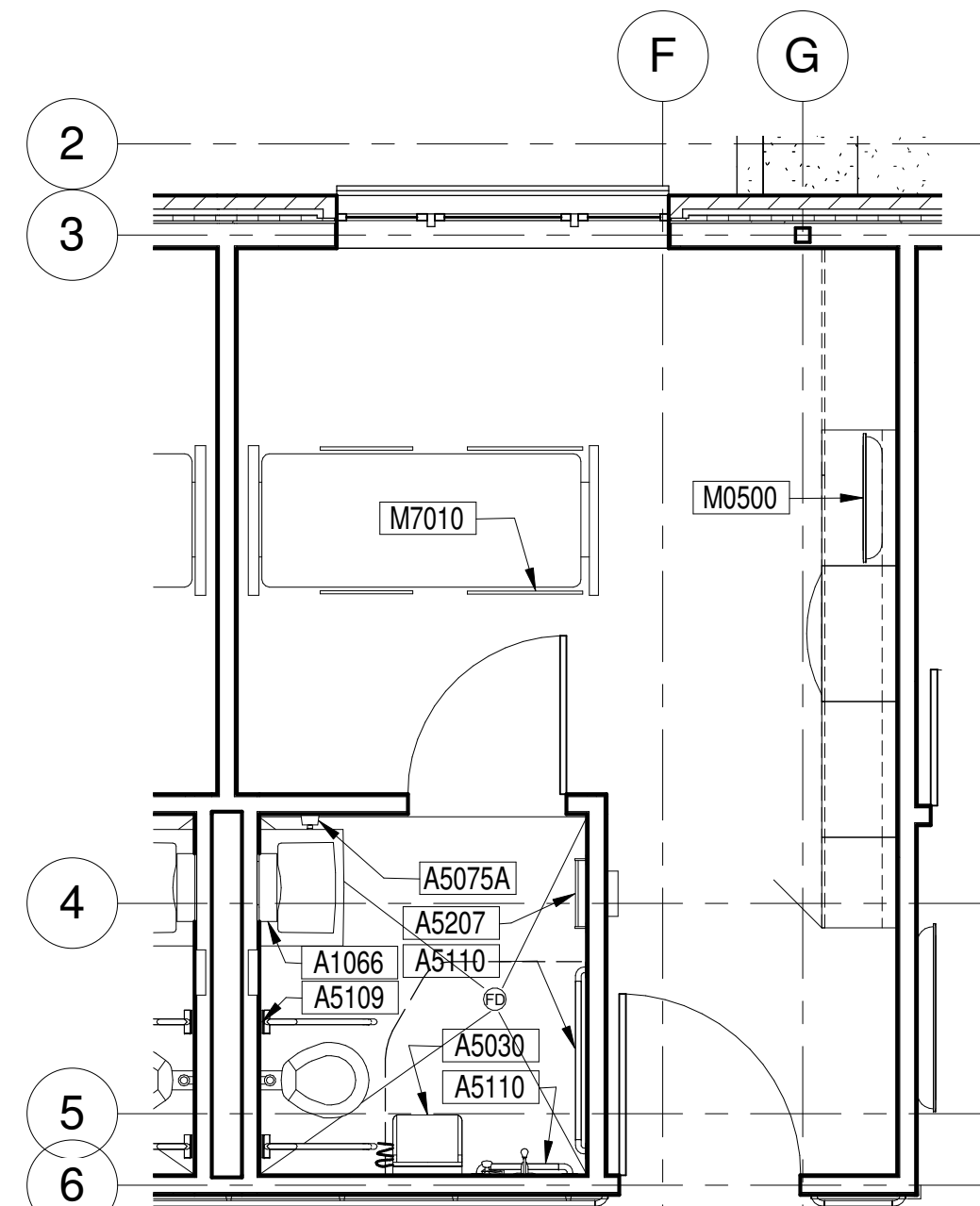
EQUIPMENT SCHEDULE						INSTALLED BY:	PURCHASED BY:
Quantity	Symbol / JSN	AI	Equipment	Description			
1	K4665	VV	MICROWAVE OVEN	MICROWAVE OVEN, 120 VOLT, 20 AMP, UNDER CABINET		GC	VA
10	M0500	VV	32" FLAT SCREEN TV	TELEVISION, LCD/FLAT SCREEN, WALL/CEILING MOUNTED WITH ALL ACCESSORIES		GC	VA
1	M0515	VV	60" FLAT SCREEN TV	TELEVISION, LCD/FLAT SCREEN, WALL/CEILING MOUNTED WITH ALL ACCESSORIES		GC	VA
3	M1801	VV	DESKTOP COMPUTER AND MONITOR	COMPUTER, DESKTOP, MICROPROCESSING, W/FLAT PANEL MONITOR		VA	VA
1	M1825	VV	Laser Printer 147	HIGH RESOLUTION, MEDIUM DUTY LASER PRINTER		VA	VA
9	M2055	CC	SHELF - 12" DEPTH	SHELVING, WALL MOUNTED, STAINLESS STEEL FOR STORAGE ROOM		GC	GC
1	M2300	VV	WASHER	WASHER, CLOTHES, FRONT LOADING AND FRONT CONTROL, COMMERCIAL, 120 VOLT, 20 AMP		GC	VA
1	M2400	VV	DRYER	DRYER, CLOTHES, FRONT LOADING AND FRONT CONTROL, COMMERCIAL		GC	VA
10	M7010	VV	PATIENT LIFT BED	BED, ELECTRIC 120V, 20 AMP, 40"Wx89"L WITH MATTRESS		VA	VA
1	R7000	VV	REFRIGERATOR	REFRIGERATOR-FREEZER, DOMESTIC, 120 VOLT, 20 AMP, APPROX. 36"Wx28"Dx66"H		GC	VA
1	R7250	VV	FREEZER	FREEZER, DOMESTIC TYPE, FULL SIZE		GC	VA
1	VC1000	VC	STEAM TABLE	UNIT, HOT FOOD, STEAM TABLE, ELECTRICAL 5-HOLE, 240 VOLTS, EAGLE GROUP HT50BE ELECTRIC, WITH SNEEZE GUARD		GC	VA
1	VC1100	CC	WALL OVEN	OVEN, ELECTRIC, ELEVATED, BUILT-IN, DOMESTIC, 208 VOLT, 25 AMP SINGLE PHASE		GC	VA



1 FIRST FLOOR EQUIPMENT PLAN - 10 BED HOME  
A801 3/16" = 1'-0"



3 ENLARGED RCP EQUIPMENT PLAN - 10 BED HOME  
A801 1/4" = 1'-0"



2 V-ENLARGED EQUIPMENT PLAN - TYPICAL BEDROOM  
A801 1/4" = 1'-0"

REVISION NO. 2	6/29/15
REVISION NO. 1	6/18/15
Revisions:	Date:

CONSULTANTS:	
--------------	--



ARCHITECT/ENGINEERS:	<b>TOLAND MIZELL MOLNAR</b> 590 MEANS ST NW ATLANTA GA 30318
----------------------	---

Drawing Title:	<b>EQUIPMENT FLOOR PLAN</b>
Approved Project Director:	

Project Title:	<b>FAYETTEVILLE CLC PROJECT ONE</b>
Location:	<b>FAYETTEVILLE, NC</b>
Date:	February 5, 2015
Checked:	Checker
Drawn:	Author
Project Number:	<b>565-131</b>
Building Number:	
Drawing Number:	<b>A801</b>
Dwg. of 0	

**FINAL SUBMITTAL**

**OFFICE OF  
CONSTRUCTION  
AND FACILITIES  
MANAGEMENT**

**Department of  
Veterans Affairs**