

Equipment Guide List

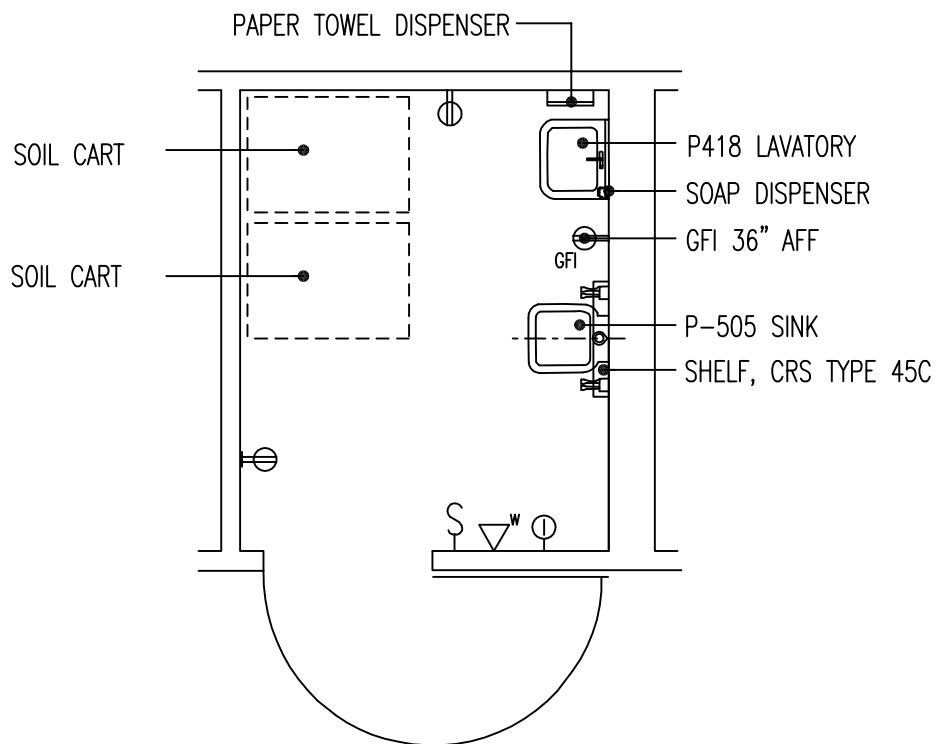
Clean Utility Room

Coordinate equipment selections with medical program. Refer to Sections 5 and 6 in the Design Guide for Lease Based Outpatient Clinics for additional guidance. Identify acquisition method(s) for equipment and utilities (Lessor Furnished, VA Furnished, or VA Furnished/Lessor Installed); coordinate with SFO Section 6.3 and Schedule B.

FIXED EQUIPMENT AND UTILITIES		
SYMBOL	QTY	DESCRIPTION
	AR	CABINET, WALL, WITH SLOPING TOP, 2 HINGED DOORS AND 2 ADJUSTABLE SHELVES, APPROX., 914 MM x 559 MM x 1067 MM (36" x 22" x 42")
	1	INTERCOM, STAFF STATION (PG-18-1, MCS 16760)
P-418	1	LAVATORY, SENSOR CONTROL (PG-18-1, MCS 15450)
	1	OUTLET, TELEPHONE, WALL MOUNTED (PG-18-1, MCS 16742)
	AR	RECEPTACLE, ELECTRICAL, DUPLEX (PG-18-1, MCS 16140)

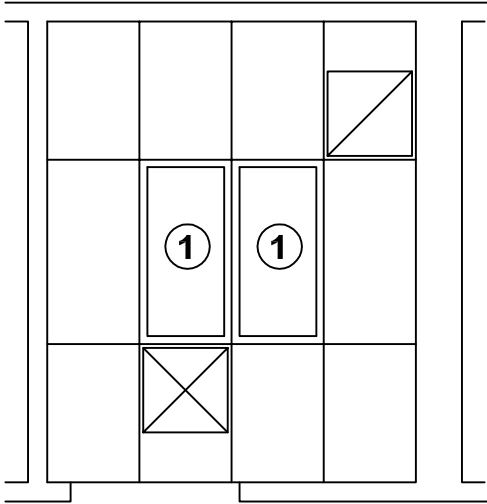
FURNISHINGS AND MOVABLE EQUIPMENT		
SYMBOL	QTY	DESCRIPTION
	AR	SHELFING, STORAGE, MOBILE, STEEL, ROD SHELF, OPEN STYLE WITH 5 ADJUSTABLE SHELVES
	AR	SHELFING, FLOORSTANDING, STEEL, 4 OR 5 ADJUSTABLE SHELVES, 914 MM x 457 MM x 2134 MM (36" x 18" x 84")
	1	CART, CRASH, 914 MM x 914 MM (36" x 36")

Soiled Utility Room Equipment & Utility Plan



9.29 NSM
100 NSF

Soiled Utility Room Reflected Ceiling Plan



LEGEND

① 2'x4' FLUORESCENT

Design Standards

Soiled Utility Room

ARCHITECTURAL

Coordinate with SFO; refer to Template SFO Section 7, and Schedule C.

Ceiling:	AT (SP)
Ceiling Height:	2740 mm (9'-0")
Wall Finish:	GWB (SC)
Wainscot:	--
Base:	Resilient Sheet Flooring
Floor Finish:	Resilient Sheet Flooring
Slab Depression:	--
Sound Protection:	--
Notes:	--

LIGHTING

Coordinate with SFO; refer to Template SFO Section 6.7, 6.7.1, 6.7.5.

General:	10 FC
Special:	--
Notes:	--

POWER

Coordinate with SFO; refer to Template SFO Section 6.7, 6.7.1, 6.7.3, 6.7.4 and Schedule B.

General:	Yes
Emergency:	--
Notes:	--

COMMUNICATION/SPECIAL SYSTEMS

Coordinate with SFO; refer to Template SFO Sections 6.7.8, 6.7.9, and Schedule B.

Data:	--
Telephone:	Yes
Intercom:	Yes
Nurse Call:	--
Public Address:	--
Radio/Entertainment:	--
MATV:	--
CCTV:	--
MID:	--
Security/Duress:	--
VTEL:	--
VA Satellite TV:	--
Notes:	--

HEATING, VENTILATING AND AIR CONDITIONING

Coordinate with SFO; refer to Template SFO Section 6.5.

Dry Bulb Temp Cooling:	26°C (78°F)
Dry Bulb Temp Heating:	22°C (72°F)
Minimum % Outside Air:	15%
100% Exhaust Air:	Yes
Noise Criteria:	NC-40
Steam:	--
Relative Humidity/Cooling:	50%
Relative Humidity/Heating:	30%
Minimum Air Changes/Hr.:	10
Room Pressure:	Negative
AC Load-Equipment:	2 W/SF
AC Load-Lighting:	2 W/SF
Number of People:	1
Special Exhaust:	--
Notes:	--

PLUMBING AND MEDICAL GASES

Coordinate with SFO; refer to Template SFO Section 6.6 and Schedule B

Cold Water:	Yes
Hot Water:	Yes
Laboratory Air:	--
Laboratory Vacuum:	--
Sanitary Drain:	Yes
Reagent grade Water:	--
Medical Air:	--
Medical Vacuum:	--
Oxygen:	--
Notes:	--

Equipment Guide List

Soiled Utility Room

Coordinate equipment selections with medical program. Refer to Sections 5 and 6 in the Design Guide for Lease Based Outpatient Clinics for additional guidance. Identify acquisition method(s) for equipment and utilities (Lessor Furnished, VA Furnished, or VA Furnished/Lessor Installed); coordinate with SFO Section 6.3 and Schedule B.

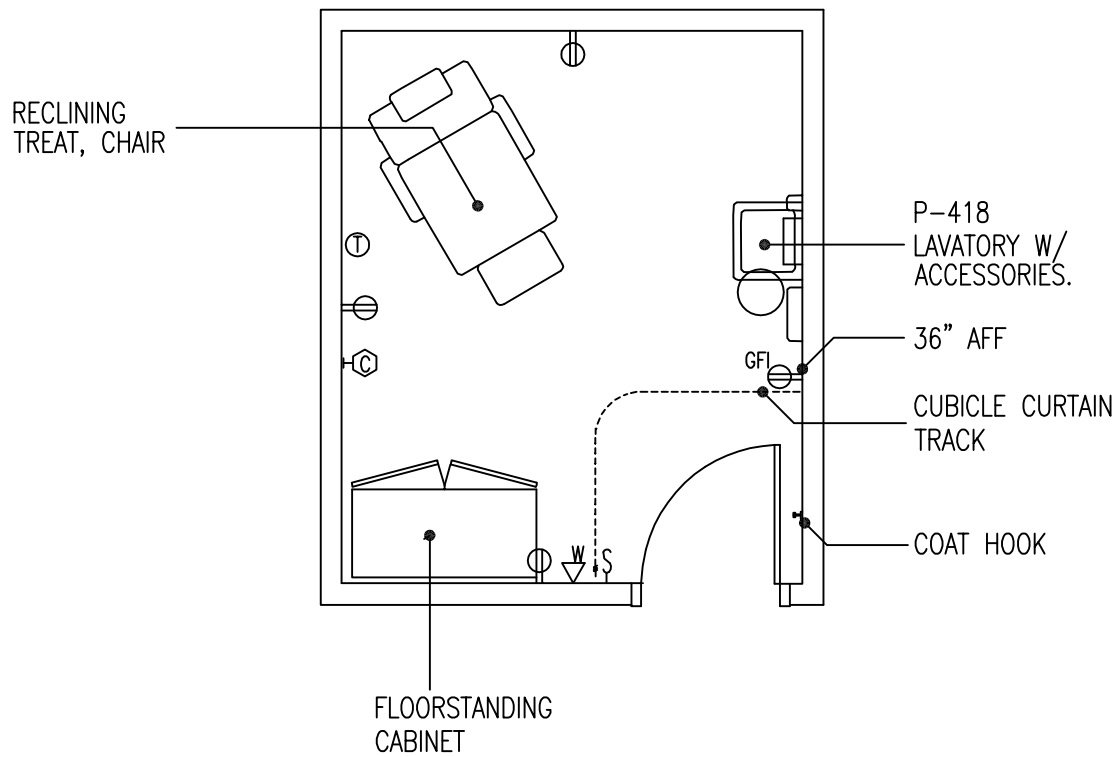
FIXED EQUIPMENT AND UTILITIES		
SYMBOL	QTY	DESCRIPTION
P-418	1	LAVATORY, SENSOR CONTROL (PG-18-1, MCS 15450; PG-18-4, 15450.17)
P-505	1	SINK, SERVICE, CLINIC, FLUSHING RIM, WALL HUNG (PG-18-1, MCS 15450; PG-18-4, 15450-4)
	1	INTERCOM, STAFF STATION (PG-18-1, MCS 16760)
	1	SHELF, CRS TYPE 45 C (PG-18-1, MCS 10800; SD 10801-1)
	1	OUTLET, TELEPHONE, WALL MOUNTED (PG-18-1, MCS 16742)
	1	RECEPTACLE, ELECTRICAL, QUADRAPLEX, FOR COMPUTER EQUIPMENT ITEMS (PG-18-1, MCS 16140)
	AR	RECEPTACLE, ELECTRICAL, DUPLEX (PG-18-1, MCS 16140)

FURNISHINGS AND MOVABLE EQUIPMENT		
SYMBOL	QTY	DESCRIPTION
	2	CART, UTILITY, CORROSION RESISTING STEEL, 914 MM x 457 MM x 762 MM (36" x 18" x 30")
	1	DISPENSER, SOAP, LIQUID, WALL MOUNTED
	1	DISPENSER, PAPER TOWEL, SURFACE MOUNTED
	AR	CARTS, SOILED, LINEN

Section 3**Guide Plates--*Expanded Clinic***

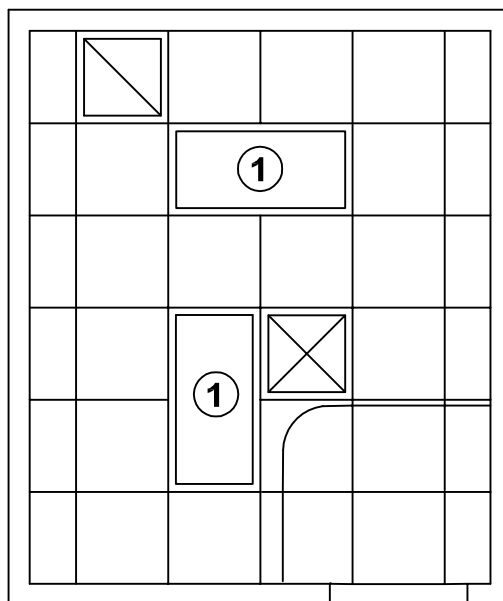
	<u>Page</u>
Aerosolized Pentamidine Procedure Room	3-1.1
Chemotherapy Treatment Room	3-2.1
Chemotherapy Agent Preparation Room	3-3.1
Dermatology, Procedure/ Treatment Room	3-4.1
Dermatology, Medication Prep and Storage Room	3-5.1
Dermatology, Phototherapy and Shower Room	3-6.1
ENT Exam Room	3-7.1
Gastroenterology (GI), Procedure/ Treatment Room	3-8.1
GI, Gastric Motility Procedure Room	3-9.1
Orthopedic Clinic Cast Room.	3-10.1
Radiology, Film Processing Room	3-11.1
Radiology, Storage Room, Unexposed Film & Chemicals	3-12.1
Women's Health/GYN Exam Room	3-13.1

Aerosolized Pentamidine Procedure Room Equipment & Utility Plan



11.15 NSM
120 NSF

Aerosolized Pentamidine Procedure Room Reflected Ceiling Plan



LEGEND

① 2'x4' FLUORESCENT

Design Standards

Aerosolized Pentamidine Procedure Room

ARCHITECTURAL

Coordinate with SFO; refer to Template SFO Section 7, and Schedule C.

Ceiling:	GWB
Ceiling Height:	2740 mm (9'-0")
Wall Finish:	Painted GWB
Wainscot:	--
Base:	Resilient Base
Floor Finish:	Vinyl Composition Tile
Slab Depression:	--
Sound Protection:	STC 40
Notes:	--

LIGHTING

Coordinate with SFO; refer to Template SFO Section 6.7, 6.7.1, 6.7.5.

General:	50-100 FC
Special:	--
Notes:	1. 2' X 4' recessed fluorescent fixture with acrylic prismatic lens.

POWER

Coordinate with SFO; refer to Template SFO Section 6.7, 6.7.1, 6.7.3, 6.7.4 and Schedule B.

General:	Yes
Emergency:	--
Notes:	--

COMMUNICATION/SPECIAL SYSTEMS

Coordinate with SFO; refer to Template SFO Sections 6.7.8, 6.7.9, and Schedule B.

Data:	--
Telephone:	Yes
Intercom:	--
Nurse Call:	--
Public Address:	--
Radio/Entertainment:	--
MATV:	--
CCTV:	--
MID:	--
Security/Duress:	--
VTEL:	--
VA Satellite TV:	--
Notes:	--

HEATING, VENTILATING AND AIR CONDITIONING

Coordinate with SFO; refer to Template SFO Section 6.5.

Dry Bulb Temp Cooling:	22°C (73°F)
Dry Bulb Temp Heating:	26°C (78°F)
Minimum % Outside Air:	15%
100% Exhaust Air:	Yes
Noise Criteria:	NC-35
Steam:	--
Relative Humidity/Cooling:	50%
Relative Humidity/Heating:	30%
Minimum Air Changes/Hr.:	10
Room Pressure:	Negative
AC Load-Equipment:	3 W/SF
AC Load-Lighting:	2 W/SF
Number of People:	3
Special Exhaust:	--
Notes:	--

PLUMBING AND MEDICAL GASES

Coordinate with SFO; refer to Template SFO Section 6.6 and Schedule B

Cold Water:	Yes
Hot Water:	Yes
Laboratory Air:	--
Laboratory Vacuum:	--
Sanitary Drain:	Yes
Reagent grade Water:	--
Medical Air:	Yes
Medical Vacuum:	--
Oxygen:	--
Notes:	--

Equipment Guide List

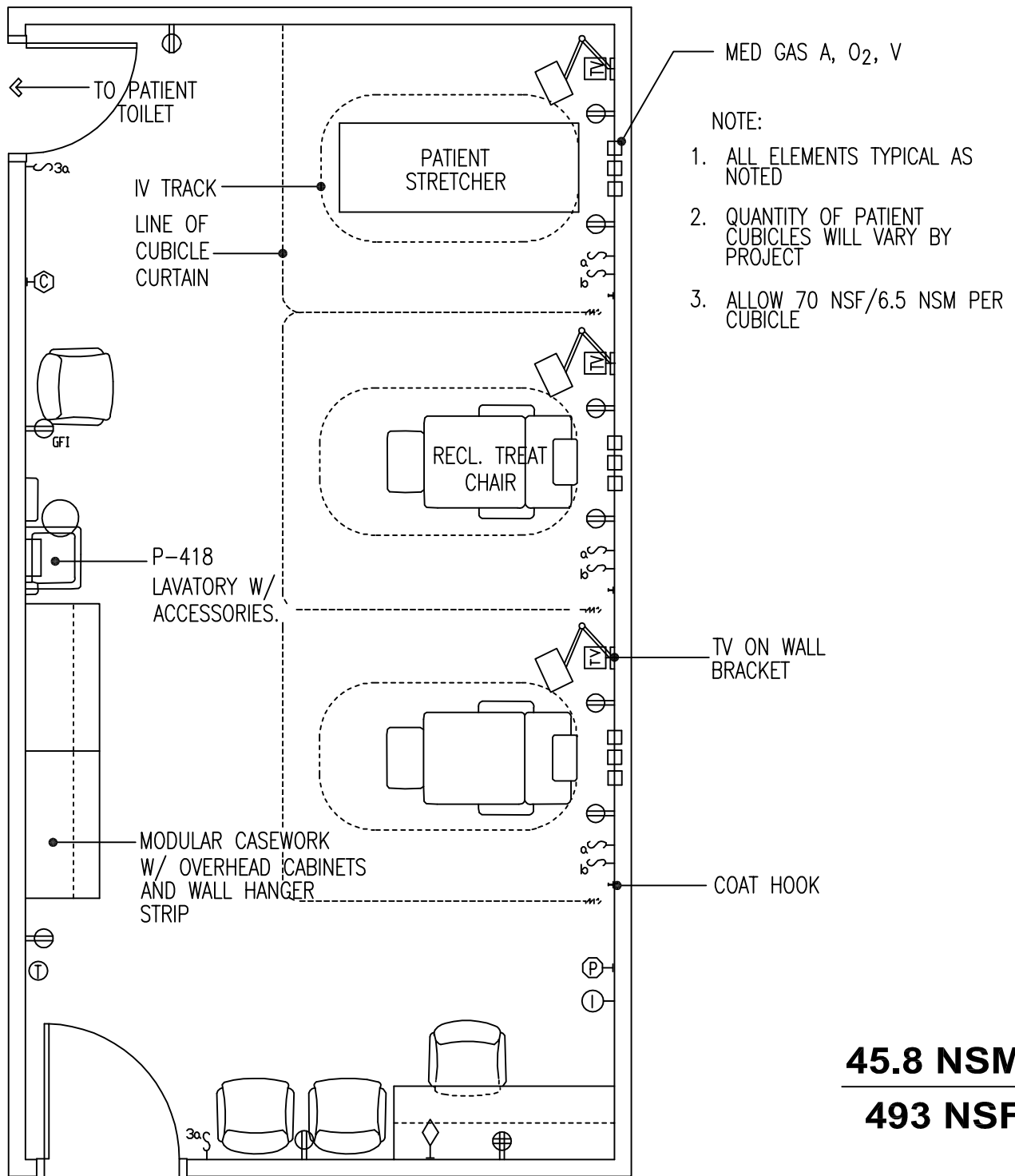
Aerosolized Pentamidine Procedure Room

Coordinate equipment selections with medical program. Refer to Sections 5 and 6 in the Design Guide for Lease Based Outpatient Clinics for additional guidance. Identify acquisition method(s) for equipment and utilities (Lessor Furnished, VA Furnished, or VA Furnished/Lessor Installed); coordinate with SFO Section 6.3 and Schedule B.

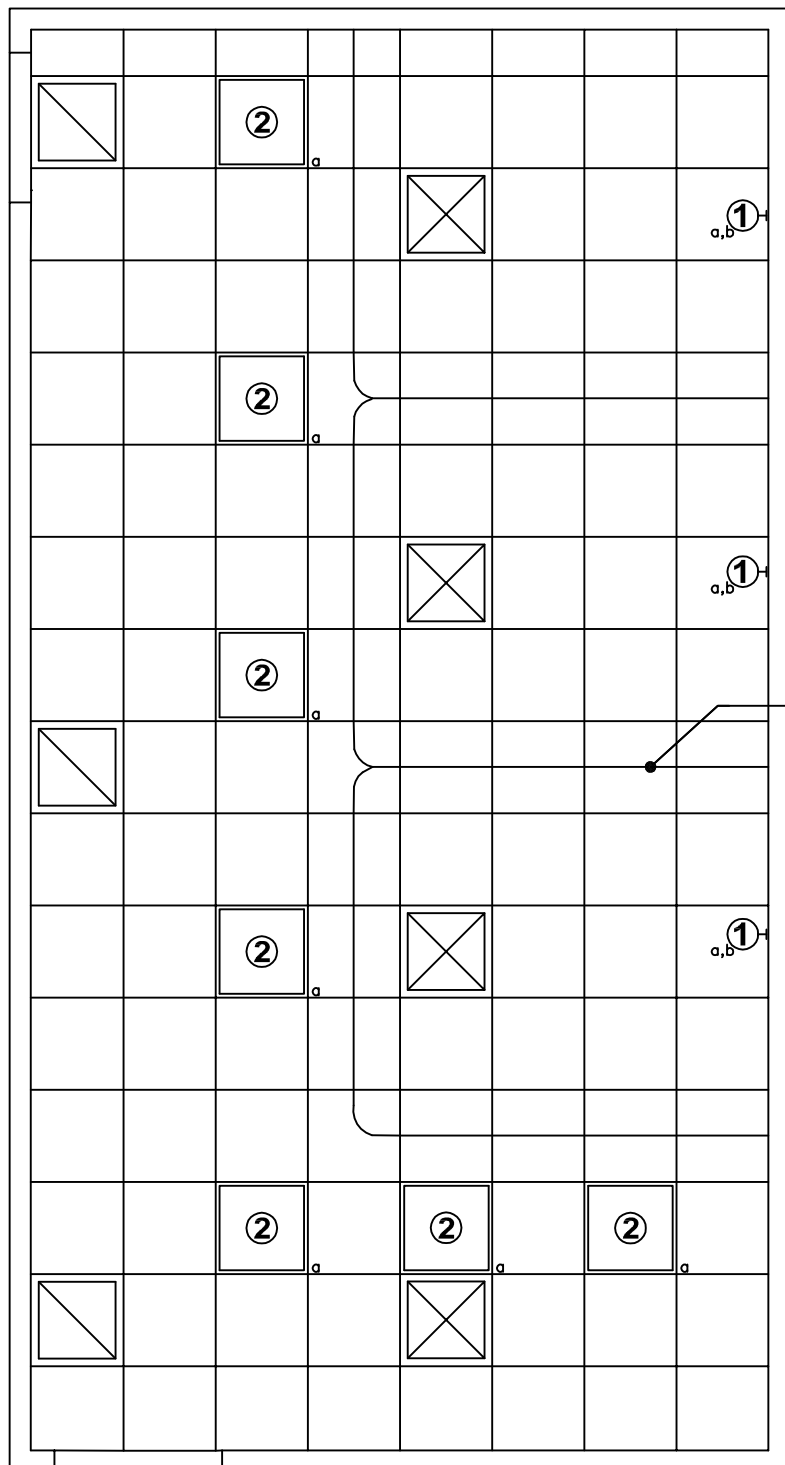
FIXED EQUIPMENT AND UTILITIES		
SYMBOL	QTY	DESCRIPTION
P-418	1	LAVATORY, SENSOR CONTROL (PG-18-1, MCS 15450; PG-18-4, SD 15450-17.DWG)
T45	1	SHELF, CORROSION RESISTING STEEL, 305 MM W x 125 MM D (12"W x 5"D) (PG-18-1, MCS 10801; PG-18-4, SD 10801-1.DWG)
	1	TRACK, CUBICLE CURTAIN, CEILING TYPE, SURFACE MOUNTED (PG-18-1, MCS 10152)
	1	OUTLET, TELEPHONE/DATA, WALL MOUNTED (PG-18-1, MCS 16742)
	AR	RECEPTACLE, ELECTRICAL, DUPLEX (PG-18-1, MCS 16140)
	1	ALARM BUTTON, SECURITY/DURESS, (PG-18-1, MCS 16765)

FURNISHINGS AND MOVABLE EQUIPMENT		
SYMBOL	QTY	DESCRIPTION
	1	CABINET, FLOORSTANDING, STEEL, 2 DOOR, WITH 5 ADJUSTABLE SHELVES, 1220 MM W x 600 MM D x 910 MM H (48"W x 24"D x 36"H)
	1	CHAIR, RECLINING, UPHOLSTERED, 36" x 38" x 72" (EXTENDED)
	1	CLOCK, BATTERY OPERATED
	1	DISPENSER, PAPER TOWEL, SURFACE MOUNTED
	1	DISPENSER, SOAP, LIQUID, WALL MOUNTED
	1	HOOK, COAT, WALL MOUNTED
	1	CURTAIN, CUBICLE

Chemotherapy Treatment Room Equipment & Utility Plan



Chemotherapy Treatment Room Reflected Ceiling Plan



LINE OF CUBICLE
CURTAIN TRACK

LEGEND

- ① FLUORESCENT WALL BRACKET
DIRECT/ INDIRECT
- ② 2'x2' FLUORESCENT

Design Standards

Chemotherapy Treatment Room

ARCHITECTURAL

Coordinate with SFO; refer to Template SFO Section 7, and Schedule C.

Ceiling:	AT (SP)
Ceiling Height:	2740 mm (9'-0")
Wall Finish:	GWB (SC)
Wainscot:	--
Base:	Resilient Sheet Flooring
Floor Finish:	Resilient Sheet Flooring
Slab Depression:	--
Sound Protection:	--
Notes:	--

LIGHTING

Coordinate with SFO; refer to Template SFO Section 6.7, 6.7.1, 6.7.5.

General:	50-100 FC Non-Treatment Area 30 FC Patient Treatment Area
Special:	Yes
Notes:	1. Wall mounted fluorescent direct/indirect fixture with acrylic prismatic lens. Provide individual cubicle switches for separate control of direct/indirect lamps. 2. 2' X 2' recessed fluorescent light fixture with acrylic prismatic lens.

POWER

Coordinate with SFO; refer to Template SFO Section 6.7, 6.7.1, 6.7.3, 6.7.4 and Schedule B.

General:	Yes
Emergency:	--
Notes:	--

COMMUNICATION/SPECIAL SYSTEMS

Coordinate with SFO; refer to Template SFO Sections 6.7.8, 6.7.9, and Schedule B.

Data:	Yes
Telephone:	Yes
Intercom:	Yes
Nurse Call:	--
Public Address:	--

Radio/Entertainment:	--
MATV:	--
CCTV:	Yes
MID:	--
Security/Duress:	--
VTEL:	--
VA Satellite TV:	--
Notes:	--

HEATING, VENTILATING AND AIR CONDITIONING

Coordinate with SFO; refer to Template SFO Section 6.5.

Dry Bulb Temp Cooling:	24°C (76°F)
Dry Bulb Temp Heating:	26°C (78°F)
Minimum % Outside Air:	15%
100% Exhaust Air:	Yes
Noise Criteria:	NC-35
Steam:	--
Relative Humidity/Cooling:	50%
Relative Humidity/Heating:	30%
Minimum Air Changes/Hr.:	10
Room Pressure:	Negative
AC Load-Equipment:	6 W/SF
AC Load-Lighting:	1.6 W/SF
Number of People:	8
Special Exhaust:	--
Notes:	Provide capability to maintain 29°C (85°F) year round.

PLUMBING AND MEDICAL GASES

Coordinate with SFO; refer to Template SFO Section 6.6 and Schedule B

Cold Water:	Yes
Hot Water:	Yes
Laboratory Air:	--
Laboratory Vacuum:	--
Sanitary Drain:	Yes
Reagent grade Water:	--
Medical Air:	Yes
Medical Vacuum:	Yes
Oxygen:	Yes
Notes:	--

Equipment Guide List

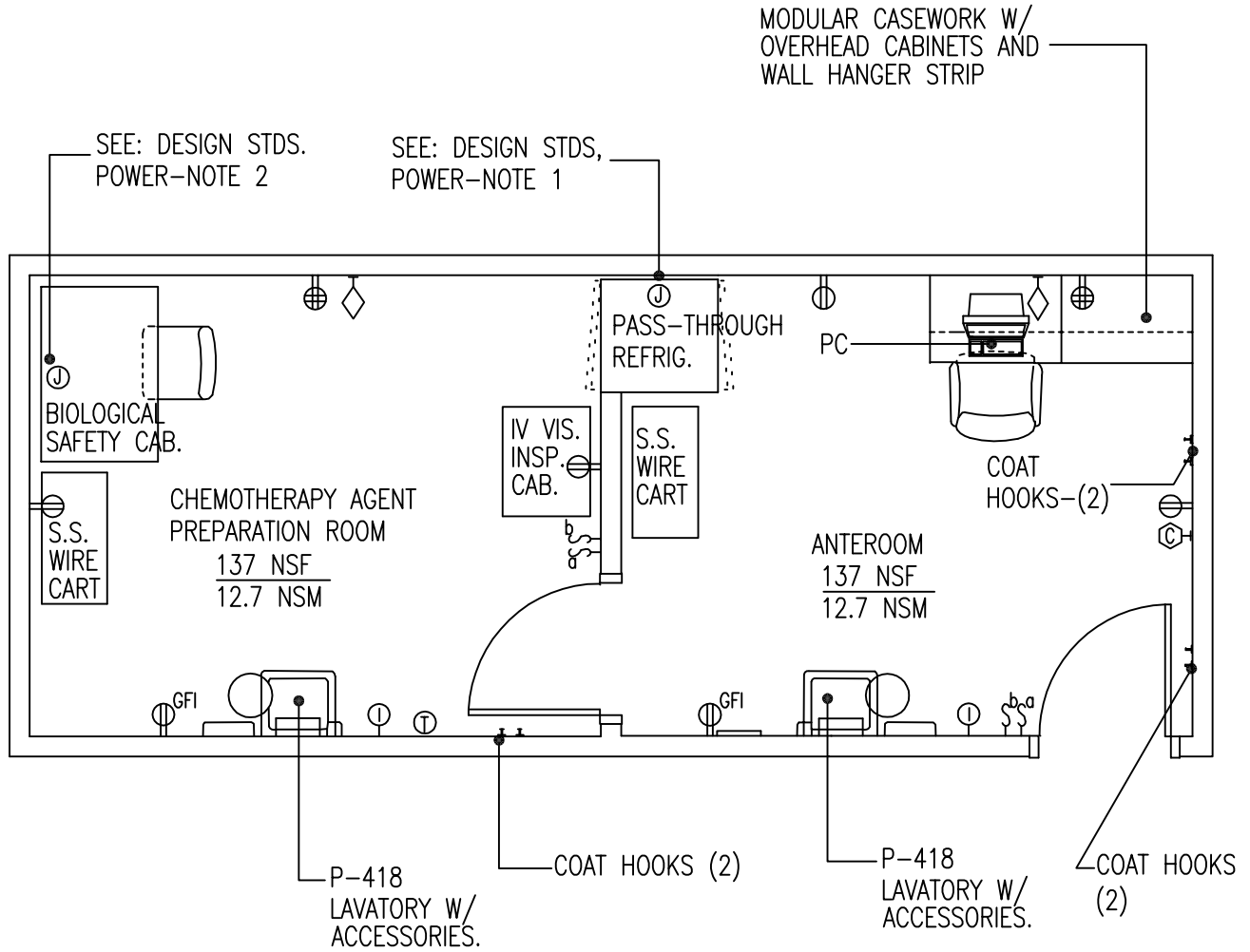
Chemotherapy Treatment Room

Coordinate equipment selections with medical program. Refer to Sections 5 and 6 in the Design Guide for Lease Based Outpatient Clinics for additional guidance. Identify acquisition method(s) for equipment and utilities (Lessor Furnished, VA Furnished, or VA Furnished/Lessor Installed); coordinate with SFO Section 6.3 and Schedule B.

FIXED EQUIPMENT AND UTILITIES		
SYMBOL	QTY	DESCRIPTION
	AR	BRACKET, MOUNTING, TELEVISION RECEIVER (PG-18-1, MCS 16781)
P-418	1	LAVATORY, SENSOR CONTROL (PG-18-1, MCS 15450; PG-18-4, SD 15450-17.DWG)
T45	1	SHELF, CORROSION RESISTING STEEL, 305 MM W x 125 MM D (12"W x 5"D) (PG-18-1, MCS 10801; PG-18-4, 10801-1)
	AR	TRACK, CURTAIN, CUBICLE, CEILING TYPE, SURFACE MOUNTED (PG-18-1, MCS 10152)
	AR	TRACK, INTRAVENOUS, CEILING MOUNTED, CONTINUOUS LOOP TRACK AND VERTICAL ADJUSTMENT (ONE FOR EACH RECLINING CHAIR OR STRETCHER) (PG-18-1, MCS 10152)
	AR	MODULAR CASEWORK, WITH OVERHEAD CABINETS AND WALL HANGER STRIPS
	AR	OUTLET, MEDICAL AIR, WALL MOUNTED (PG-18-1, MCS 15491)
	AR	OUTLET, OXYGEN, WALL MOUNTED (PG-18-1, MCS 15491)
	AR	OUTLET, MEDICAL VACUUM, WALL MOUNTED (PG-18-1, MCS 15491)
	AR	BRACKET, SLIDE, VACUUM BOTTLE (PG-18-1, MCS 15491)
	1	OUTLET, TELEPHONE/DATA, WALL MOUNTED (PG-18-1, MCS 16742)
	1	RECEPTACLE, ELECTRICAL, QUADRAPLEX, FOR COMPUTER EQUIPMENT ITEMS (PG-18-1, MCS 16140)
	AR	RECEPTACLE, ELECTRICAL, DUPLEX (PG-18-1, MCS 16140)
	1	ALARM BUTTON, SECURITY/DURESS, (PG-18-1, MCS 16765)

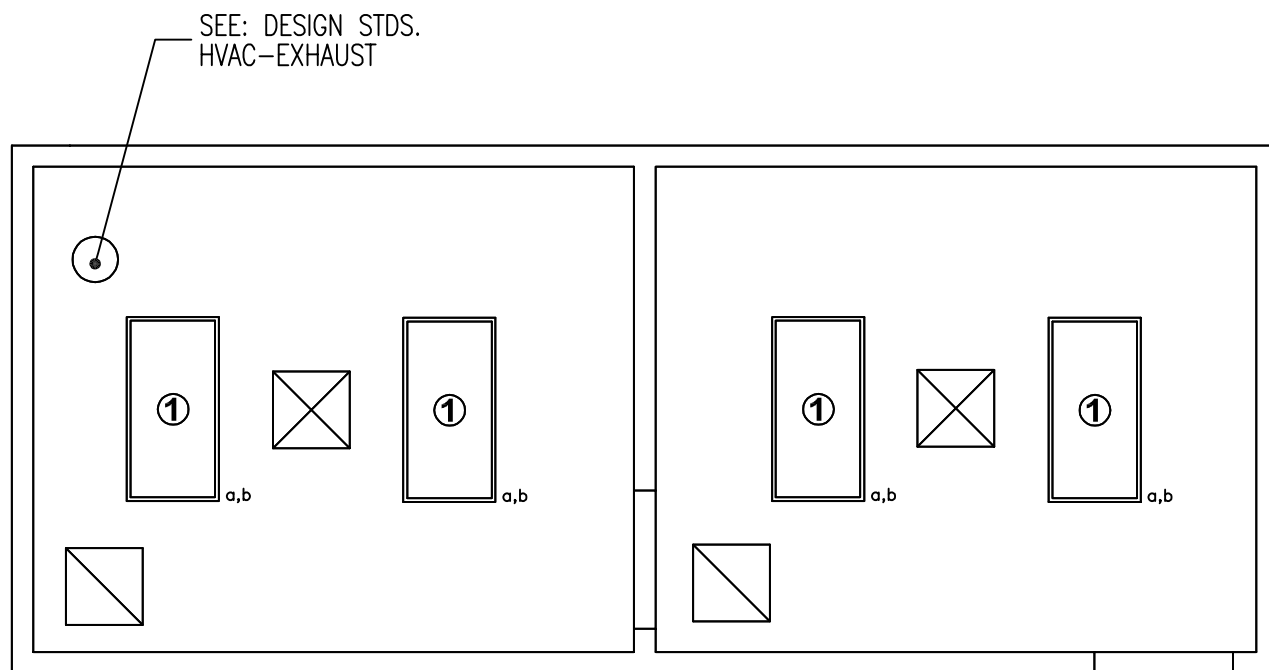
FURNISHINGS AND MOVABLE EQUIPMENT		
SYMBOL	QTY	DESCRIPTION
	AR	CHAIR, RECLINING, UPHOLSTERED, 910 MM x 960 MM x 1830 MM (36" x 38" x 72") (EXTENDED)
	1	CLOCK, BATTERY OPERATED
	1	DISPENSER, PAPER TOWEL, SURFACE MOUNTED
	1	DISPENSER, SOAP, LIQUID, WALL MOUNTED
	AR	HOOK, COAT, WALL MOUNTED
	1	RECEPTACLE, WASTE, STEP ON TYPE, APPROX., 305 MM (12") DIAMETER
	AR	STRETCHER, TREATMENT
	AR	TELEVISION, COLOR, 230 MM (9")
	AR	CHAIR, STRAIGHT, WITH ARMS
	AR	CURTAIN, CUBICLE
	1	PC, COMPUTER SYSTEM, WITH KEYBOARD

Chemotherapy Agent Preparation Room Equipment & Utility Plan



25.4 NSM
274 NSF

Chemotherapy Agent Preparation Room Reflected Ceiling Plan



LEGEND

① 2' x4' FLUORESCENT

Design Standards

Chemotherapy Agent Preparation Room

ARCHITECTURAL

Coordinate with SFO; refer to Template SFO Section 7, and Schedule C.

Ceiling: GWB
 Ceiling Height: 2740 mm (9'-0")
 Wall Finish: Painted GWB
 Wainscot: --
 Base: Resilient Sheet Flooring
 Floor Finish: Resilient Sheet Flooring
 Slab Depression: --
 Sound Protection: --
 Notes: --

LIGHTING

Coordinate with SFO; refer to Template SFO Section 6.7, 6.7.1, 6.7.5.

General: 70 FC
 Special: --
 Notes: 1. 2' X 4' recessed
 fluorescent light fixture
 with acrylic prismatic
 lens.

POWER

Coordinate with SFO; refer to Template SFO Section 6.7, 6.7.1, 6.7.3, 6.7.4 and Schedule B.

General: Yes
 Emergency: Yes
 Notes: 1. Junction box/wiring
 device for refrigerator.
 Connection
 requirements per
 manufacturer. Connect
 to emergency system
 critical power source.
 2. Junction box/wiring
 device per biological
 safety cabinet.
 Connection
 requirements per
 manufacturer.

COMMUNICATION/SPECIAL SYSTEMS

Coordinate with SFO; refer to Template SFO Sections 6.7.8, 6.7.9, and Schedule B.

Data: Yes
 Telephone: Yes
 Intercom: Yes
 Nurse Call: --

Public Address: --
 Radio/Entertainment: --
 MATV: --
 CCTV: --
 MID: --
 Security/Duress: --
 VTEL: --
 VA Satellite TV: --
 Notes: --

HEATING, VENTILATING AND AIR CONDITIONING

Coordinate with SFO; refer to Template SFO Section 6.5.

Dry Bulb Temp Cooling: 26°C (78°F)
 Dry Bulb Temp Heating: 22°C (72°F)
 Minimum % Outside Air:
 100% Exhaust Air: Yes
 Noise Criteria: NC-40
 Steam: --
 Relative Humidity/Cooling: 50%
 Relative Humidity/Heating: 30%
 Minimum Air Changes/Hr.: 12
 Room Pressure: Negative
 AC Load-Equipment: 6 W/SF
 AC Load-Lighting: 1.6 W/SF
 Number of People: 6
 Special Exhaust: Biological Safety
 Cabinet Exhaust
 Notes: --

PLUMBING AND MEDICAL GASES

Coordinate with SFO; refer to Template SFO Section 6.6 and Schedule B

Cold Water: Yes
 Hot Water: Yes
 Laboratory Air: Yes
 Laboratory Vacuum: Yes
 Sanitary Drain: Chem. resistance
 Reagent grade Water: --
 Medical Air: --
 Medical Vacuum: --
 Oxygen: --
 Notes: Provide one natural
 gas outlet. All
 outlets on left side
 of Biological Safety
 Cabinet.

Equipment Guide List

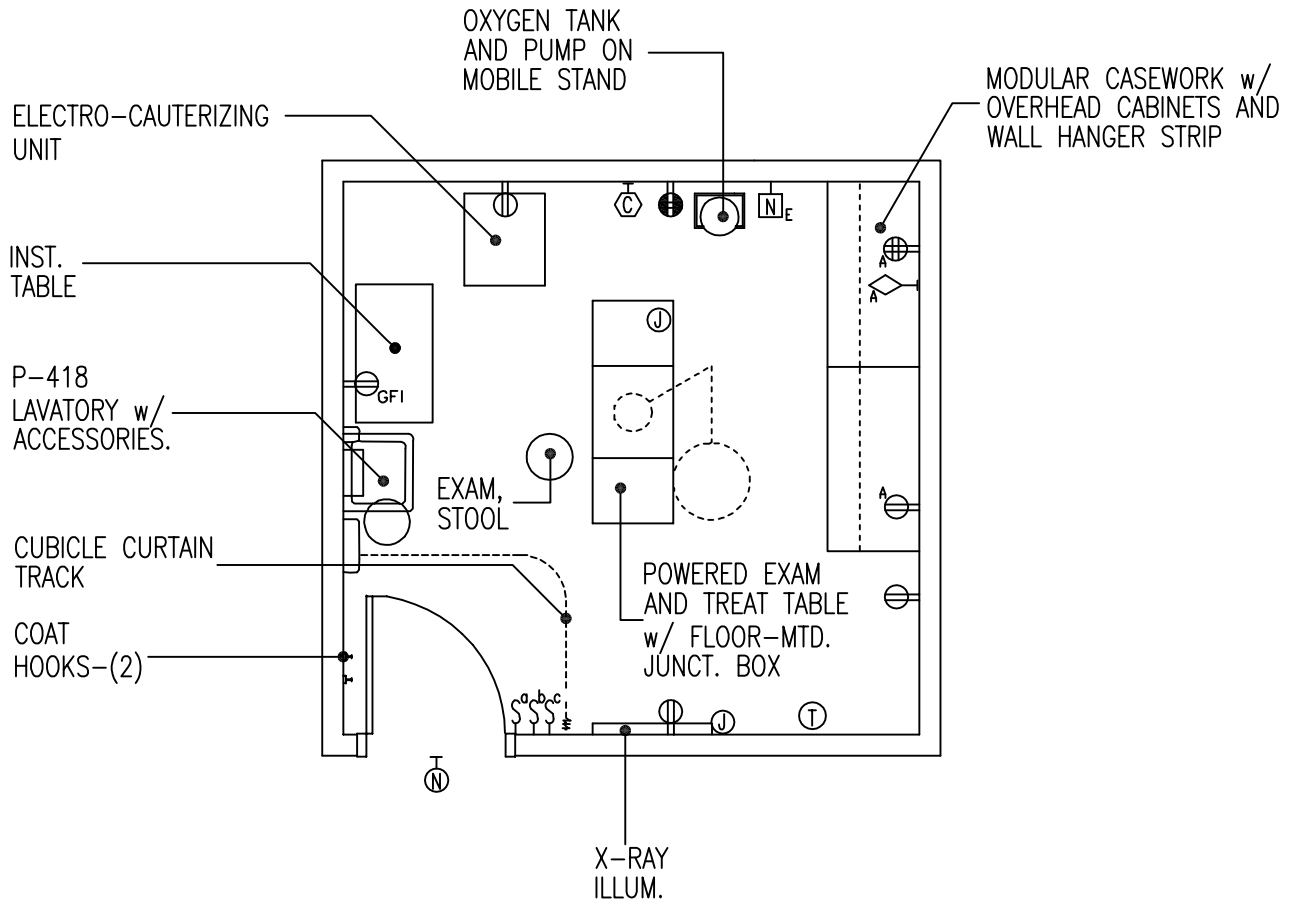
Chemotherapy Agent Preparation Room

Coordinate equipment selections with medical program. Refer to Sections 5 and 6 in the Design Guide for Lease Based Outpatient Clinics for additional guidance. Identify acquisition method(s) for equipment and utilities (Lessor Furnished, VA Furnished, or VA Furnished/Lessor Installed); coordinate with SFO Section 6.3 and Schedule B.

FIXED EQUIPMENT AND UTILITIES		
SYMBOL	QTY	DESCRIPTION
P-418	2	LAVATORY, SENSOR CONTROL (PG-18-1, MCS 15450; PG-18-4, SD 15450-17.DWG)
	1	BIOLOGICAL SAFETY CABINET H12B2-72 (LAMINAR FLOW), CLASS II; TYPE B-2, 100% DIRECT EXHAUSTED AIR THROUGH THE WORK-SPACE. 1200 MM x 815 MM x 1980 MM (48"W x 38"D x 72"H)
	AR	MODULAR CASEWORK, WITH OVERHEAD CABINETS AND WALL HANGER STRIP
	2	JUNCTION BOX, WALL, 120V POWER FOR EQUIPMENT (PG-18-1, MCS 16140)
	2	INTERCOM, STAFF STATION (PG-18-1, MCS 16760)
	2	OUTLET, TELEPHONE/DATA, WALL MOUNTED (PG-18-1, MCS 16742)
	2	RECEPTACLE, ELECTRICAL, QUADRAPLEX, FOR COMPUTER EQUIPMENT ITEMS (PG-18-1, MCS 16140)
	AR	RECEPTACLE, ELECTRICAL, DUPLEX (PG-18-1, MCS 16140)

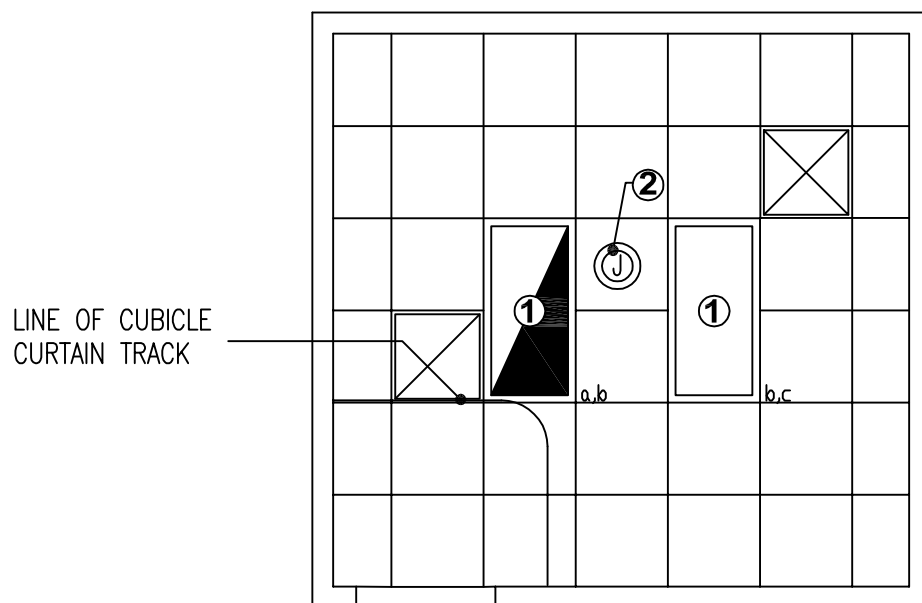
FURNISHINGS AND MOVABLE EQUIPMENT		
SYMBOL	QTY	DESCRIPTION
	1	REFRIGERATOR, BIOLOGICAL, PASS-THRU, WITH HINGED GLASS DOORS, 760 MM W x 840 MM D x 2060 MM H (30"W x 33"D x 81"H)
	1	CABINET, INTRAVENOUS (IV), VISUAL CLARITY INSPECTION, 760 MM W x 610 MM D (30"W x 24"D), 120 BOLTS 20 AMPS
	AR	CART, EXCHANGE, CRS WIRE
	2	CHAIR, ROTARY, WITH ARMS
	1	CLOCK, BATTERY OPERATED
	AR	PC, COMPUTER SYSTEM, WITH KEYBOARD
	2	DISPENSER, BIFOLD PAPER TOWEL, SURFACE MOUNTED
	2	DISPENSER, SOAP, LIQUID, WALL MOUNTED
	AR	RECEPTACLE, WASTE, STEP-ON TYPE, APPROX., 300 MM (12") DIAMETER
	AR	HOOK, COAT, WALL MOUNTED

Dermatology Procedure/Treatment Room Equipment & Utility Plan



13.9 NSM
150 NSF

Dermatology Procedure/Treatment Room Reflected Ceiling Plan



LEGEND

- ① 2' x4' FLUORESCENT
- ② CEILING MOUNTED SURGICAL LIGHT FIXTURE

Design Standards

Dermatology Procedure / Treatment Room

ARCHITECTURAL

Coordinate with SFO; refer to Template SFO Section 7, and Schedule C.

Ceiling:	AT
Ceiling Height:	2740 mm (9'-0")
Wall Finish:	Painted GWB
Wainscot:	--
Base:	Resilient Base
Floor Finish:	Vinyl Composition Tile
Slab Depression:	--
Sound Protection:	STC 40
Notes:	--

LIGHTING

Coordinate with SFO; refer to Template SFO Section 6.7, 6.7.1, 6.7.5.

General:	50-100 FC
Special:	Yes
Notes:	<ol style="list-style-type: none"> 2' X 4' recessed fluorescent light fixture with acrylic prismatic lens. Fluorescent lamp Kelvin temperature shall match that of the surgical lamp. 50% of light fixture on emergency system critical power source.

POWER

Coordinate with SFO; refer to Template SFO Section 6.7, 6.7.1, 6.7.3, 6.7.4 and Schedule B.

General:	Yes
Emergency:	Yes
Notes:	<ol style="list-style-type: none"> Junction box for surgical light fixture. Fixture on emergency system critical power source. Properly support fixture per manufacturer. Junction box x-ray illuminator. Connect per equipment manufacturer. Floor mounted junction box for powered exam and treatment table. Connect per equipment manufacturer.

COMMUNICATION/SPECIAL SYSTEMS

Coordinate with SFO; refer to Template SFO Sections 6.7.8, 6.7.9, and Schedule B.

Data:	Yes
Telephone:	Yes
Intercom:	--
Nurse Call:	Yes
Public Address:	--
Radio/Entertainment:	--
MATV:	--
CCTV:	--
MID:	--
Security/Duress:	--
VTEL:	--
VA Satellite TV:	--
Notes:	--

HEATING, VENTILATING AND AIR CONDITIONING

Coordinate with SFO; refer to Template SFO Section 6.5.

Dry Bulb Temp Cooling:	23°C (75°F)
Dry Bulb Temp Heating:	26°C (78°F)
Minimum % Outside Air:	15%
100% Exhaust Air:	--
Noise Criteria:	NC-40
Steam:	--
Relative Humidity/Cooling:	50%
Relative Humidity/Heating:	30%
Minimum Air Changes/Hr.:	8
Room Pressure:	0
AC Load-Equipment:	6 W/SF
AC Load-Lighting:	2 W/SF
Number of People:	3
Special Exhaust:	--
Notes:	--

PLUMBING AND MEDICAL GASES

Coordinate with SFO; refer to Template SFO Section 6.6 and Schedule B

Cold Water:	Yes
Hot Water:	Yes
Laboratory Air:	--
Laboratory Vacuum:	--
Sanitary Drain:	Yes
Reagent grade Water:	--
Medical Air:	--
Medical Vacuum:	--
Oxygen:	--
Notes:	--

Equipment Guide List

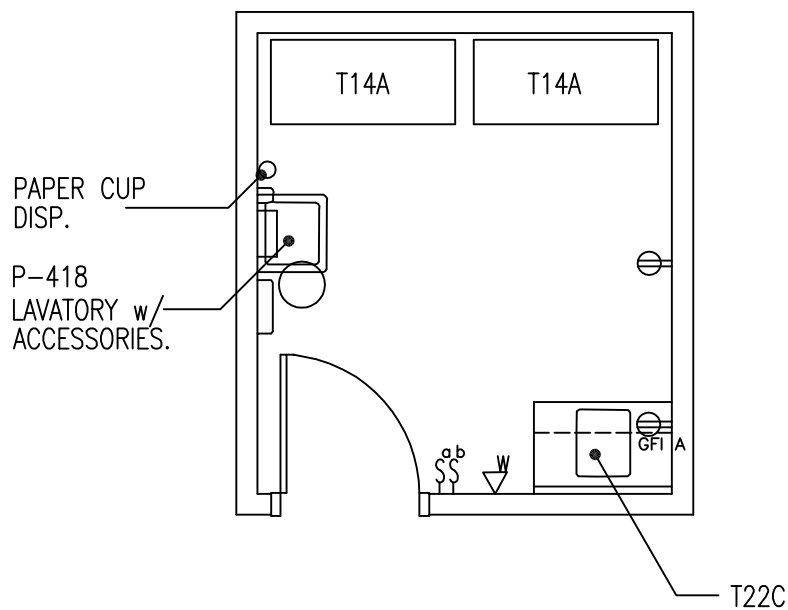
Dermatology Procedure / Treatment Room

Coordinate equipment selections with medical program. Refer to Sections 5 and 6 in the Design Guide for Lease Based Outpatient Clinics for additional guidance. Identify acquisition method(s) for equipment and utilities (Lessor Furnished, VA Furnished, or VA Furnished/Lessor Installed); coordinate with SFO Section 6.3 and Schedule B.

FIXED EQUIPMENT AND UTILITIES		
SYMBOL	QTY	DESCRIPTION
P-418	1	LAVATORY, SENSOR CONTROL (PG-18-1, MCS 15450; PG-18-4, SD 15450-17.DWG)
	1	LIGHT, SMALL, SURGICAL WITH VARIABLE INTENSITY CONTROL, SINGLE POINT SUSPENSION, CEILING MOUNTED, TYPE 840B (LOCATION INSTRUCTION AVAILABLE FROM ELECTRICAL SERVICE) (PG-18-1, MCS 16515)
	AR	MODULAR CASEWORK, WITH OVERHEAD CABINETS AND WALL HANGER STRIP
	1	TRACK, CUBICLE CURTAIN, CEILING TYPE, SURFACE MOUNTED (PG-18-1, MCS 10152)
	1	JUNCTION BOX, FLOOR, 120V POWER FOR EXAMINING TABLE (PG-18-1, MCS 16140)
	2	OUTLET, TELEPHONE/DATA, WALL MOUNTED (PG-18-1, MCS 16742)
	2	RECEPTACLE, ELECTRICAL, QUADRAPLEX, FOR COMPUTER EQUIPMENT ITEMS (PG-18-1, MCS 16140)
	AR	RECEPTACLE, ELECTRICAL, DUPLEX (PG-18-1, MCS 16140)
	1	NURSE CALL, CODE 1 (BLUE), EMERGENCY STATION, WITH CORRIDOR SIGNAL LIGHT, (PG-18-1, MCS 16761).
	1	ALARM BUTTON, SECURITY/DURESS, (PG-18-1, MCS 16765)

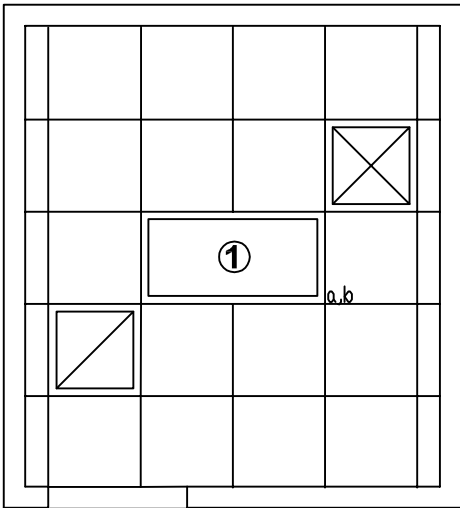
FURNISHINGS AND MOVABLE EQUIPMENT		
SYMBOL	QTY	DESCRIPTION
	1	CLOCK, BATTERY OPERATED
	1	DISPENSER, BIFOLD PAPER TOWEL, SURFACE MOUNTED
	1	DISPENSER, SOAP, LIQUID, WALL MOUNTED
	1	ELECTRO-CAUTERIZING UNIT, MOBILE, APPROX., 535 MM W x 610 MM D (21"W x 24"D)
	2	HOOK, COAT, WALL MOUNTED
	1	ILLUMINATOR, X-RAY FILM, 120 VOLTS, 150 WATTS, WALL MOUNTED, INDIVIDUAL SWITCH FOR TWO, 355 MM x 450 MM (14" x 17") RADIOGRAPHS, 750 MM W x 500 MM H (31"W x 20"H)
	1	RECEPTACLE, WASTE, STEP ON TYPE, APPROX., 305 MM (12") DIAMETER
	1	TABLE, EXAMINING AND TREATMENT, MOTORIZED
	1	TABLE, INSTRUMENT, DRESSING, CORROSION RESISTING STEEL, 500 MM W x 910 MM L x 840 MM H (20"W x 36"L x 35"H)
	1	CURTAIN, CUBICLE
	1	STOOL, EXAMINING, ADJUSTABLE

Dermatology Medication Preparation Storage Room Equipment & Utility Plan



8.36 NSM
90 NSF

Dermatology Medication Preparation Storage Room Reflected Ceiling Plan



LEGEND

① 2' x4' FLUORESCENT

Design Standards

Dermatology Medication Preparation / Storage Room

ARCHITECTURAL

Coordinate with SFO; refer to Template SFO Section 7, and Schedule C.

Ceiling:	AT
Ceiling Height:	2740 mm (9'-0")
Wall Finish:	Painted GWB
Wainscot:	--
Base:	Resilient Base
Floor Finish:	Vinyl Composition Tile
Slab Depression:	--
Sound Protection:	--
Notes:	--

LIGHTING

Coordinate with SFO; refer to Template SFO Section 6.7, 6.7.1, 6.7.5.

General:	70 FC
Special:	--
Notes:	1. 2' X 4' recessed fluorescent light fixture with acrylic prismatic lens.

POWER

Coordinate with SFO; refer to Template SFO Section 6.7, 6.7.1, 6.7.3, 6.7.4 and Schedule B.

General:	Yes
Emergency:	--
Notes:	--

COMMUNICATION/SPECIAL SYSTEMS

Coordinate with SFO; refer to Template SFO Sections 6.7.8, 6.7.9, and Schedule B.

Data:	--
Telephone:	Yes
Intercom:	--
Nurse Call:	--
Public Address:	--
Radio/Entertainment:	--
MATV:	--
CCTV:	--
MID:	--
Security/Duress:	--
VTEL:	--
VA Satellite TV:	--
Notes:	--

HEATING, VENTILATING AND AIR CONDITIONING

Coordinate with SFO; refer to Template SFO Section 6.5.

Dry Bulb Temp Cooling:	26°C (78°F)
Dry Bulb Temp Heating:	22°C (72°F)
Minimum % Outside Air:	15%
100% Exhaust Air:	--
Noise Criteria:	NC-40
Steam:	--
Relative Humidity/Cooling:	50%
Relative Humidity/Heating:	30%
Minimum Air Changes/Hr.:	4
Room Pressure:	0
AC Load-Equipment:	3 W/SF
AC Load-Lighting:	2 W/SF
Number of People:	1
Special Exhaust:	--
Notes:	--

PLUMBING AND MEDICAL GASES

Coordinate with SFO; refer to Template SFO Section 6.6 and Schedule B

Cold Water:	Yes
Hot Water:	Yes
Laboratory Air:	--
Laboratory Vacuum:	--
Sanitary Drain:	Yes
Reagent grade Water:	--
Medical Air:	--
Medical Vacuum:	--
Oxygen:	--
Notes:	--

Equipment Guide List

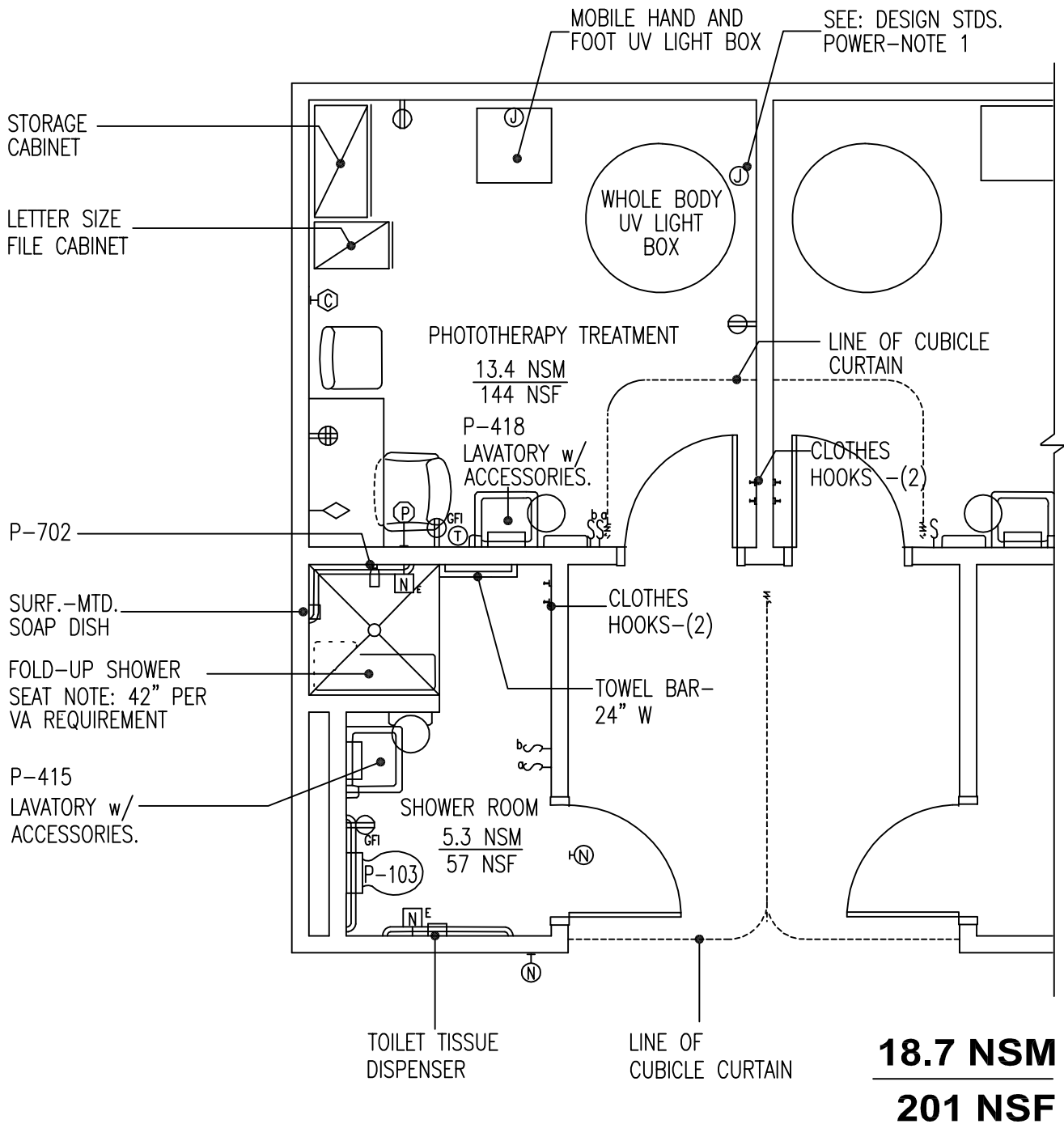
Dermatology Medication Preparation / Storage Room

Coordinate equipment selections with medical program. Refer to Sections 5 and 6 in the Design Guide for Lease Based Outpatient Clinics for additional guidance. Identify acquisition method(s) for equipment and utilities (Lessor Furnished, VA Furnished, or VA Furnished/Lessor Installed); coordinate with SFO Section 6.3 and Schedule B.

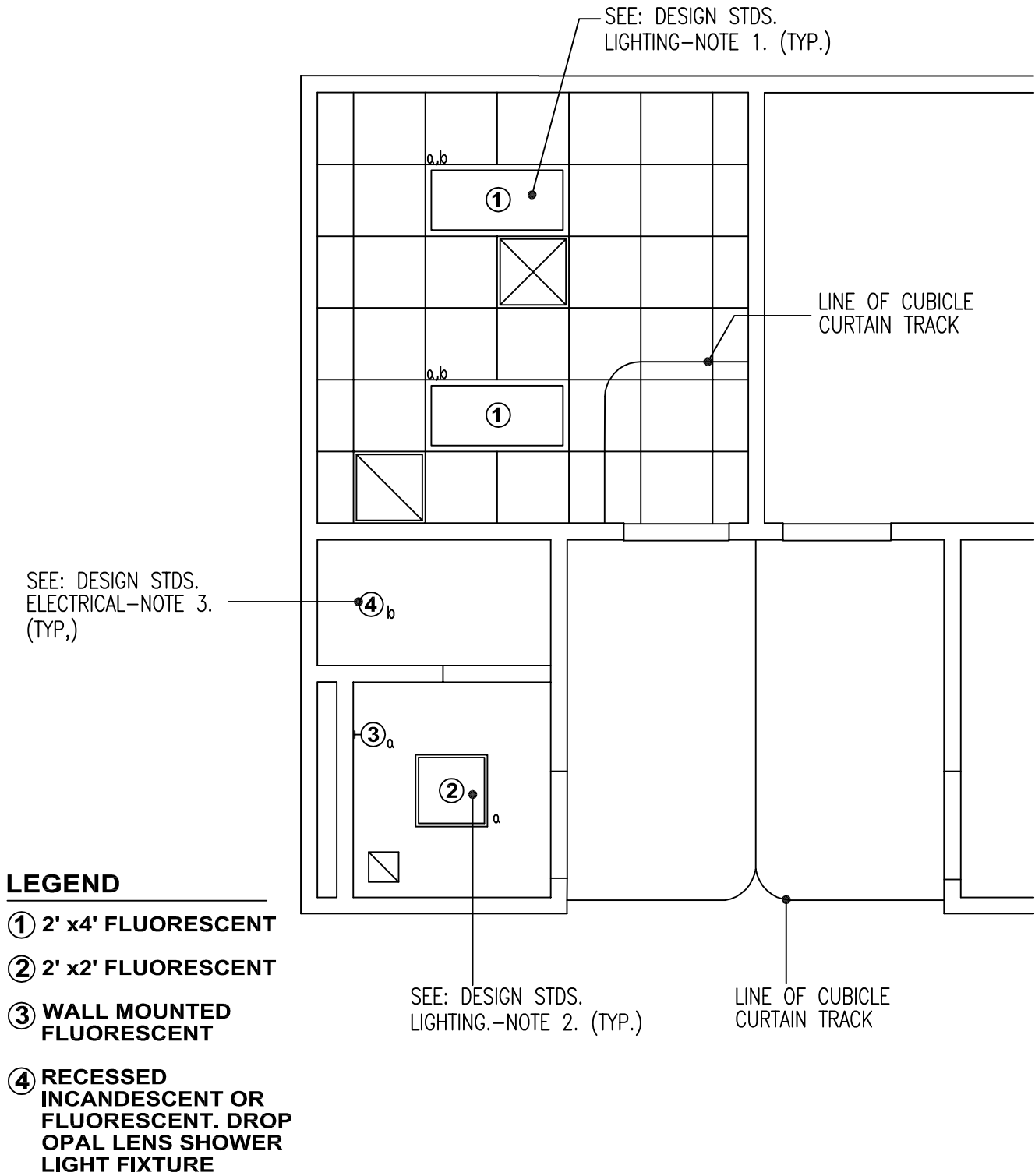
FIXED EQUIPMENT AND UTILITIES		
SYMBOL	QTY	DESCRIPTION
T-22	1	KITCHEN CABINET, CORROSION RESISTING STEEL, 910 MM x 610 MM x 2130 MM (3'-0" x 2'-0" x 7'-0") (PG-18-1, MCS 10460)
T14A	2	CABINET, CORROSION RESISTING STEEL, 6 ADJUSTABLE SHELVES, SLIDING DOORS, METAL SLOPED TOP 1220 MM x 555 MM x 2130 MM (4'-0" x 1'-10" x 7'-0") (PG-18-1, MCS 12301)
P-418	1	LAVATORY, SENSOR CONTROL (PG-18-1, MCS 15450; PG-18-4, SD 15450-17.DWG)
	AR	RECEPTACLE, ELECTRICAL, DUPLEX (PG-18-1, MCS 16140)

FURNISHINGS AND MOVABLE EQUIPMENT		
SYMBOL	QTY	DESCRIPTION
	1	DISPENSER, BIFOLD PAPER TOWEL, SURFACE MOUNTED
	1	DISPENSER, SOAP, LIQUID, WALL MOUNTED
	1	RECEPTACLE, WASTE, STEP ON TYPE, APPROX., 305 MM (12") DIAMETER
	1	DISPENSER, PAPER CUP, WALL MOUNTED

Phototherapy Treatment Room Phototherapy Shower Room Equipment & Utility Plan



Phototherapy Treatment Room Phototherapy Shower Room Reflected Ceiling Plan



Design Standards

Phototherapy Treatment Room

Phototherapy Shower Room

ARCHITECTURAL

Coordinate with SFO; refer to Template SFO Section 7, and Schedule C.

TREATMENT ROOM

Ceiling: AT
 Ceiling Height: 2740 mm (9'-0")
 Wall Finish: Painted GWB
 Base: Resilient Sheet Flooring
 Floor Finish: Resilient Sheet Flooring

TREATMENT ROOM

Ceiling: Portland Cement Plaster
 Ceiling Height: 2740 mm (9'-0")
 Wall Finish: CT, full height
 Base: CT
 Floor Finish: CT
 Slab Depression: 75 mm (3")

LIGHTING

Coordinate with SFO; refer to Template SFO Section 6.7, 6.7.1, 6.7.5.

General: 50-100 FC Treatment Room
 30 FC Shower/Toilet

Special: --

Notes: 1. 2' X 4' recessed fluorescent fixture with acrylic prismatic lens.
 2. 2' X 2' recessed fluorescent fixture with acrylic prismatic lens.
 3. Recessed incandescent or fluorescent, drop opal lens, shower light fixture.
 UL listed for wet locations.

POWER

Coordinate with SFO; refer to Template SFO Section 6.7, 6.7.1, 6.7.3, 6.7.4 and Schedule B.

General: yes
 Emergency: --
 Notes: 1. Junction box for connection to UV light box at 208V. Voltage, phase, and required connection per equipment manufacturer.

COMMUNICATION/SPECIAL SYSTEMS

Coordinate with SFO; refer to Template SFO Sections 6.7.8, 6.7.9, and Schedule B.

Data: Yes
 Telephone: Yes
 Intercom: --
 Nurse Call: Yes
 Public Address: --
 Radio/Entertainment: --
 MATV: --
 CCTV: --
 MID: --
 Security/Duress: --
 VTEL: --
 VA Satellite TV: --
 Notes: --

HEATING, VENTILATING AND AIR CONDITIONING

Coordinate with SFO; refer to Template SFO Section 6.5.

Dry Bulb Temp Cooling: 24°C (76°F)
 Dry Bulb Temp Heating: 26°C (78°F)
 Minimum % Outside Air: 100%
 100% Exhaust Air: Yes
 Noise Criteria: NC-40
 Steam: --
 Relative Humidity/Cooling: 50%
 Relative Humidity/Heating: 30%
 Minimum Air Changes/Hr.: 10
 Room Pressure: Negative
 AC Load-Equipment: 5 W/SF
 AC Load-Lighting: 2.0 W/SF
 Number of People: 3
 Special Exhaust: --
 Notes: Coordinate equipment heat gains with manufacturer.

PLUMBING AND MEDICAL GASES

Coordinate with SFO; refer to Template SFO Section 6.6 and Schedule B

Cold Water: Yes
 Hot Water: Yes
 Laboratory Air: --
 Laboratory Vacuum: --
 Sanitary Drain: Yes
 Reagent grade Water: --
 Medical Air: --
 Medical Vacuum: --
 Oxygen: --
 Notes: --

Equipment Guide List

Phototherapy Treatment Room

Coordinate equipment selections with medical program. Refer to Sections 5 and 6 in the Design Guide for Lease Based Outpatient Clinics for additional guidance. Identify acquisition method(s) for equipment and utilities (Lessor Furnished, VA Furnished, or VA Furnished/Lessor Installed); coordinate with SFO Section 6.3 and Schedule B.

FIXED EQUIPMENT AND UTILITIES		
SYMBOL	QTY	DESCRIPTION
	2	HOOK, CLOTHES (PG-18-1, MCS 10800)
P-418	1	LAVATORY, SENSOR CONTROL (PG-18-1, MCS 15450; PG-18-4, SD 15450-17.DWG)
	2	TRACK, CURTAIN, CUBICLE, CEILING TYPE, SURFACE MOUNTED (PG-18-1, MCS 10152)
	2	JUNCTION BOX, 208V POWER, FOR LIGHT BOXES (PG-18-1, MCS 16140)
	1	OUTLET, TELEPHONE/DATA, WALL MOUNTED (PG-18-1, MCS 16742)
	1	RECEPTACLE, ELECTRICAL, QUADRAPLEX, FOR COMPUTER EQUIPMENT ITEMS (PG-18-1, MCS 16140)
	AR	RECEPTACLE, ELECTRICAL, DUPLEX (PG-18-1, MCS 16140)
	1	ALARM BUTTON, SECURITY/DURESS, (PG-18-1, MCS 16765)

FURNISHINGS AND MOVABLE EQUIPMENT		
SYMBOL	QTY	DESCRIPTION
	1	CABINET, FILING (LETTER SIZE) 5 DRAWER, APPROX., 380 MM W x 6350 MM D x 1520 MM H (15"W x 25"D x 60"H)
	1	CABINET, STORAGE, STEEL, FREESTANDING WITH 2 DOORS, 5 ADJUSTABLE SHELVES AND LOCK 910 MM W x 455 MM D X 2130 MM H (36"W x 18"D X 84"H)
	1	CHAIR, ROTARY, WITH ARMS
	AR	CHAIR, STRAIGHT, WITH ARMS
	1	CLOCK, BATTERY OPERATED
	1	DESK, DOUBLE PEDESTAL, 1520 MM W x 760 MM D x 800 MM D (60"W x 30"D x 29-1/2"H)
	1	DISPENSER, BIFOLD PAPER TOWEL, SURFACE MOUNTED
	1	DISPENSER, SOAP, LIQUID, WALL MOUNTED
	1	HAND AND FOOT UV LIGHT BOX, ON MOBILE STAND, 220 VOLT, APPROX., 610 MM W x 610 MM D x 760 MM H (24"W x 24"D x 30"H)
	1	RECEPTACLE, WASTE, STEP ON TYPE, APPROX., 305 MM (12") DIAMETER
	1	WHOLE BODY UV LIGHT BOX, 220 VOLT, APPROX., 100 MM (4') DIAMETER IN CLOSED POSITION
	1	CURTAIN, CUBICLE

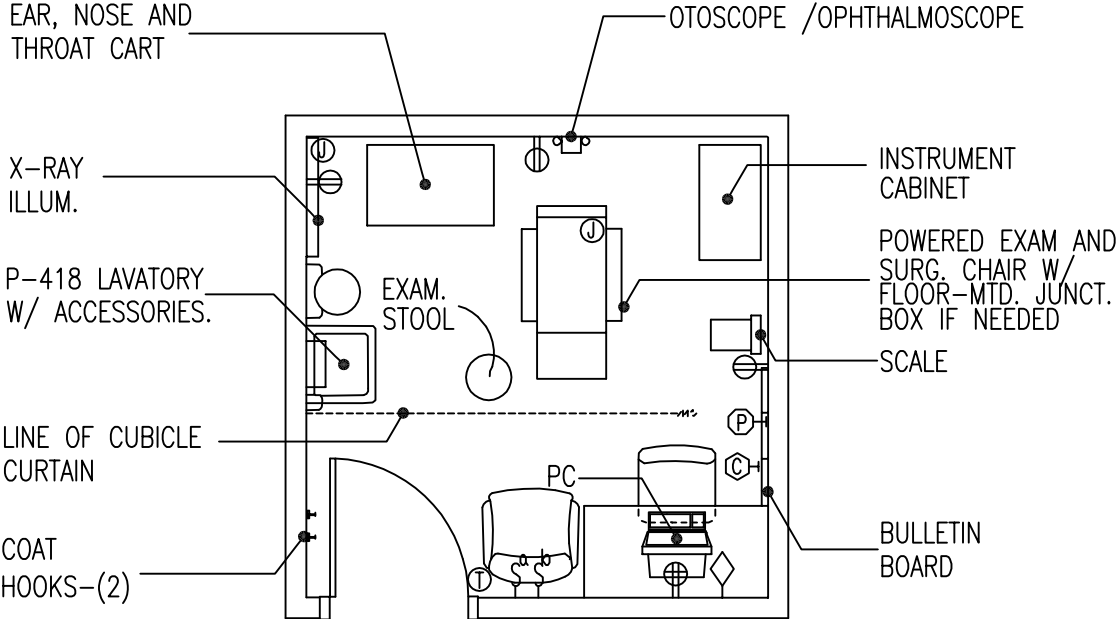
Equipment Guide List Phototherapy Shower Room

Coordinate equipment selections with medical program. Refer to Sections 5 and 6 in the Design Guide for Lease Based Outpatient Clinics for additional guidance. Identify acquisition method(s) for equipment and utilities (Lessor Furnished, VA Furnished, or VA Furnished/Lessor Installed); coordinate with SFO Section 6.3 and Schedule B.

FIXED EQUIPMENT AND UTILITIES		
SYMBOL	QTY	DESCRIPTION
	AR	TRACK, CUBICLE CURTAIN, CEILING TYPE, SURFACE MOUNTED (PG-18-4, MCS 10152)
	1	BAR, TOWEL (PG-18-1, MCS 10800)
	AR	BAR, GRAB FOR TUB OR SHOWER (PG-18-1, MCS 10800; PG-18-4, SD 10800-5.DWG)
	1	DISH, SOAP, SURFACE MOUNTED (PG-18-1, MCS 10800)
	2	HOOK, CLOTHES (PG-18-1, MCS 10800)
P-415	1	LAVATORY, STRAIGHT BACK (PG-18-1, MCS 15450)
P-702	1	SHOWER, BATH FIXTURE, WALL MOUNTED, CONCEALED SUPPLIES (PG-18-1, MCS 15450)
	1	SEAT, FOLDING SHOWER (PG-18-1, MCS 10800)
	AR	BAR, GRAB FOR WATER CLOSET (PG-18-1, MCS 10800; PG-18-4, SD 10162-1.DWG)
	1	DISPENSER, TOILET TISSUE, DOUBLE ROLL (PG-18-1, MCS 10800; PG-18-4, SD 10162-1.DWG)
	2	NURSE CALL, EMERGENCY STATION WITH CORRIDOR SIGNAL LIGHT CONNECTED TO NEAREST NURSE CONTROL STATION (PG-18-1, MCS 16761)
P-103	1	WATER CLOSET, WALL HUNG (PG-18-1, MCS 15450; PG-18-4, SD 15450-17.DWG)
	AR	RECEPTACLE, ELECTRICAL, DUPLEX (PG-18-1, MCS 16140)

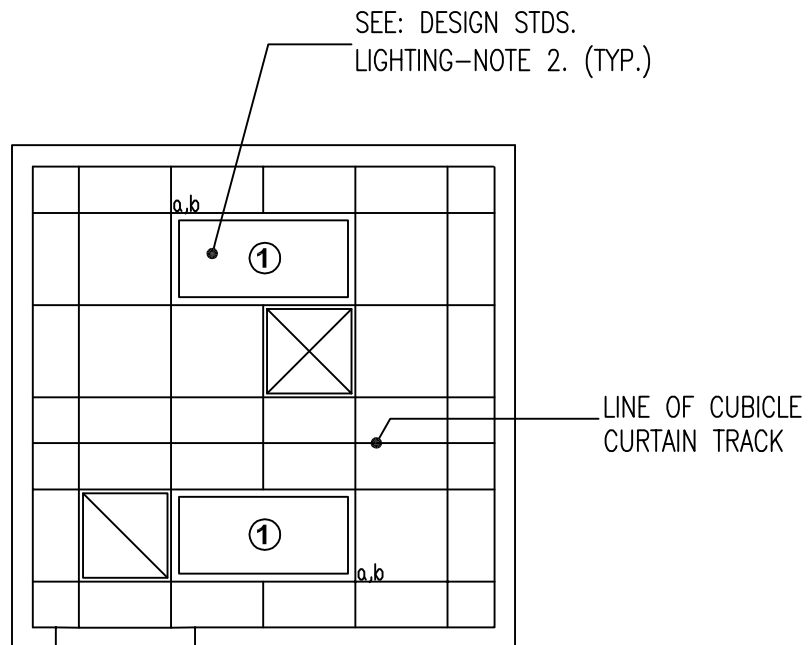
FURNISHINGS AND MOVABLE EQUIPMENT		
SYMBOL	QTY	DESCRIPTION
	1	DISPENSER, SOAP, LIQUID, WALL HUNG
	1	DISPENSER, PAPER TOWEL, SURFACE MOUNTED
	1	RECEPTACLE, WASTE, STEP ON TYPE, APPROX., 305 MM (12") DIAMETER
	AR	CURTAIN, CUBICLE

ENT Examination Room Equipment & Utility Plan



9.3 NSM
100 NSF

ENT Examination Room Reflected Ceiling Plan



LEGEND

① 2' x4' FLUORESCENT

Design Standards

ENT Examination Room

ARCHITECTURAL

Coordinate with SFO; refer to Template SFO Section 7, and Schedule C.

Ceiling:	GWB Lay-in Panels
Ceiling Height:	2740 mm (9'-0")
Wall Finish:	Painted GWB
Wainscot:	--
Base:	Resilient Base
Floor Finish:	Vinyl Composition Tile
Slab Depression:	--
Sound Protection:	STC 40
Notes:	--

LIGHTING

Coordinate with SFO; refer to Template SFO Section 6.7, 6.7.1, 6.7.5.

General:	50-100 FC
Special:	--
Notes:	1. 2' X 4' recessed fluorescent light fixture with acrylic prismatic lens.

POWER

Coordinate with SFO; refer to Template SFO Section 6.7, 6.7.1, 6.7.3, 6.7.4 and Schedule B.

General:	Yes
Emergency:	--
Notes:	1. Recessed floor mounted junction box for ENT chair. Connection to equipment per manufacturer. Provide dedicated circuit. Verify wattage, voltage, and phase. 2. Junction box x-ray illuminator. Connect per equipment manufacturer.

COMMUNICATION/SPECIAL SYSTEMS

Coordinate with SFO; refer to Template SFO Sections 6.7.8, 6.7.9, and Schedule B.

Data:	Yes
Telephone:	Yes
Intercom:	--
Nurse Call:	--
Public Address:	--
Radio/Entertainment:	--

MATV:	--
CCTV:	--
MID:	--
Security/Duress:	--
VTEL:	--
VA Satellite TV:	--
Notes:	--

HEATING, VENTILATING AND AIR CONDITIONING

Coordinate with SFO; refer to Template SFO Section 6.5.

Dry Bulb Temp Cooling:	23°C (75°F)
Dry Bulb Temp Heating:	26°C (78°F)
Minimum % Outside Air:	15%
100% Exhaust Air:	--
Noise Criteria:	NC-35
Steam:	--
Relative Humidity/Cooling:	50%
Relative Humidity/Heating:	30%
Minimum Air Changes/Hr.:	6
Room Pressure:	0
AC Load-Equipment:	6 W/SF
AC Load-Lighting:	2 W/SF
Number of People:	3
Special Exhaust:	--
Notes:	--

PLUMBING AND MEDICAL GASES

Coordinate with SFO; refer to Template SFO Section 6.6 and Schedule B

Cold Water:	Yes
Hot Water:	Yes
Laboratory Air:	--
Laboratory Vacuum:	--
Sanitary Drain:	Yes
Reagent grade Water:	--
Medical Air:	--
Medical Vacuum:	--
Oxygen:	--
Notes:	--

Equipment Guide List

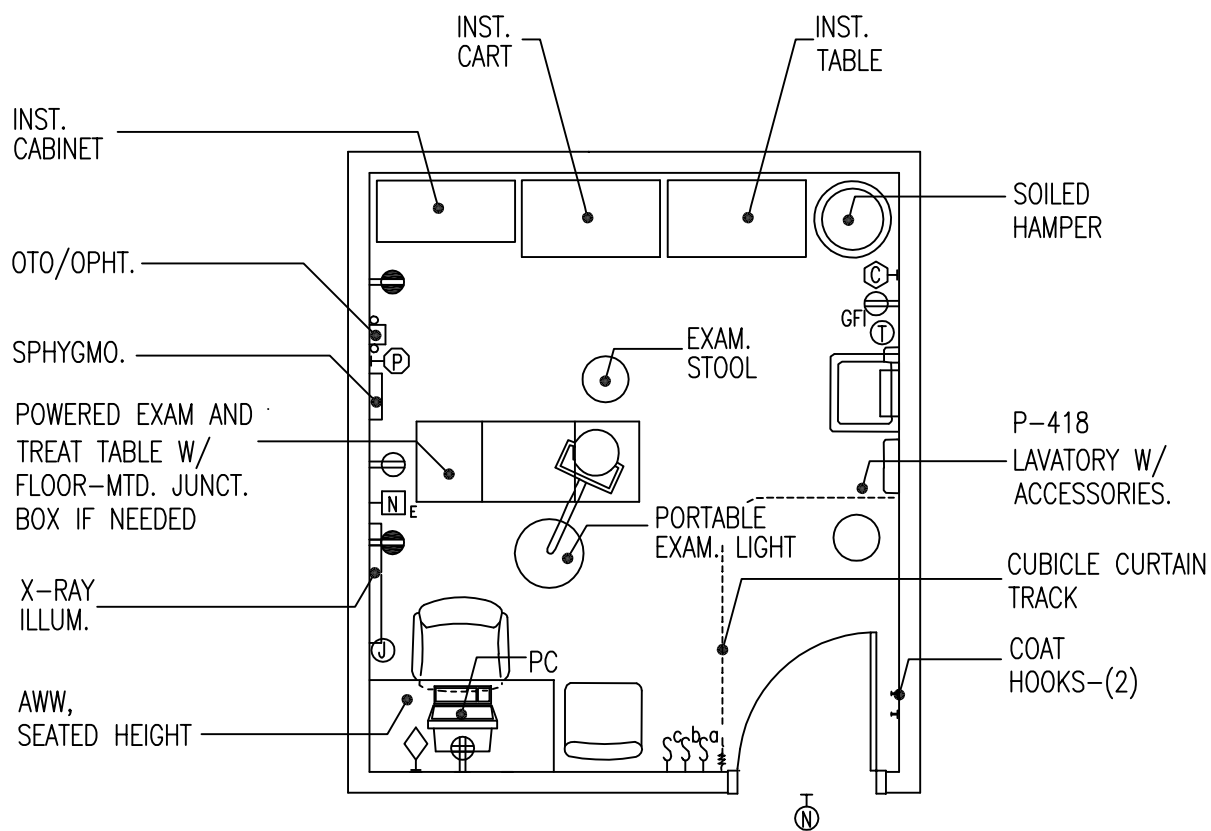
ENT Examination Room

Coordinate equipment selections with medical program. Refer to Sections 5 and 6 in the Design Guide for Lease Based Outpatient Clinics for additional guidance. Identify acquisition method(s) for equipment and utilities (Lessor Furnished, VA Furnished, or VA Furnished/Lessor Installed); coordinate with SFO Section 6.3 and Schedule B.

FIXED EQUIPMENT AND UTILITIES		
SYMBOL	QTY	DESCRIPTION
P-418	1	LAVATORY, SENSOR CONTROL (PG-18-1, MCS 15450; PG-18-4, 15450-17)
T45	1	SHELF, CORROSION RESISTING STEEL, 300 MM W x 125 MM D (12"W x 5"D) (PG-18-1, MCS 10801; PG-18-4, 10801-1)
	AR	JUNCTION BOX, FLOOR, 120V FOR EXAM CHAIR (PG-18-1, MCS 16140)
	1	OUTLET, TELEPHONE/DATA, WALL MOUNTED (PG-18-1, MCS 16742)
	1	RECEPTACLE, ELECTRICAL, QUADRAPLEX, FOR COMPUTER EQUIPMENT ITEMS (PG-18-1, MCS 16140)
	AR	RECEPTACLE, ELECTRICAL, DUPLEX (PG-18-1, MCS 16140)
	1	ALARM BUTTON, SECURITY/DURESS, (PG-18-1, MCS 16765)

FURNISHINGS AND MOVABLE EQUIPMENT		
SYMBOL	QTY	DESCRIPTION
	1	BULLETIN BOARD, 1200 MM W x 910 MM H (48"W x 36"H)
	1	CABINET, INSTRUMENT AND TREATMENT, 910 MM W x 405 MM D x 1950 MM H (36"W x 16"D x 78"H)
	1	CART, TREATMENT, ENT
	1	CHAIR, EXAMINING, SURGICAL, 120 VOLTS, 20 AMPS
	1	CHAIR, ROTARY, WITH ARMS
	1	CHAIR, STRAIGHT, WITHOUT ARMS
	1	CLOCK, BATTERY OPERATED
	1	PC, COMPUTER SYSTEM, WITH KEYBOARD
	1	DESK, SINGLE PEDESTAL, 1200 MM W x 760 MM D x 760 MM H (48"W x 30"D x 30"H)
	1	DISPENSER, BIFOLD PAPER TOWEL, SURFACE MOUNTED
	1	DISPENSER, SOAP, LIQUID, WALL MOUNTED
	2	HOOK, COAT, WALL MOUNTED
	1	OTOSCOPE / OPHTHALMOSCOPE, WALL HUNG
	1	RECEPTACLE, WASTE, STEP ON TYPE, APPROX., 305 MM (12") DIAMETER
	1	STOOL, EXAMINING, ADJUSTABLE
	1	SCALE, PERSON WEIGHTING, PLATFORM TYPE, 255 MM W x 300 MM L (10" x 13"); 226.8 KG (500 LB) CAPACITY WITH HEIGHT INDICATOR
	1	CURTAIN, CUBICLE
	1	ILLUMINATOR, X-RAY FILM, 120V, 150W, WALL MOUNTED, INDIVIDUAL SWITCH FOR 2, 356 MM x 432 MM (14" x 17") RADIOGRAPHS

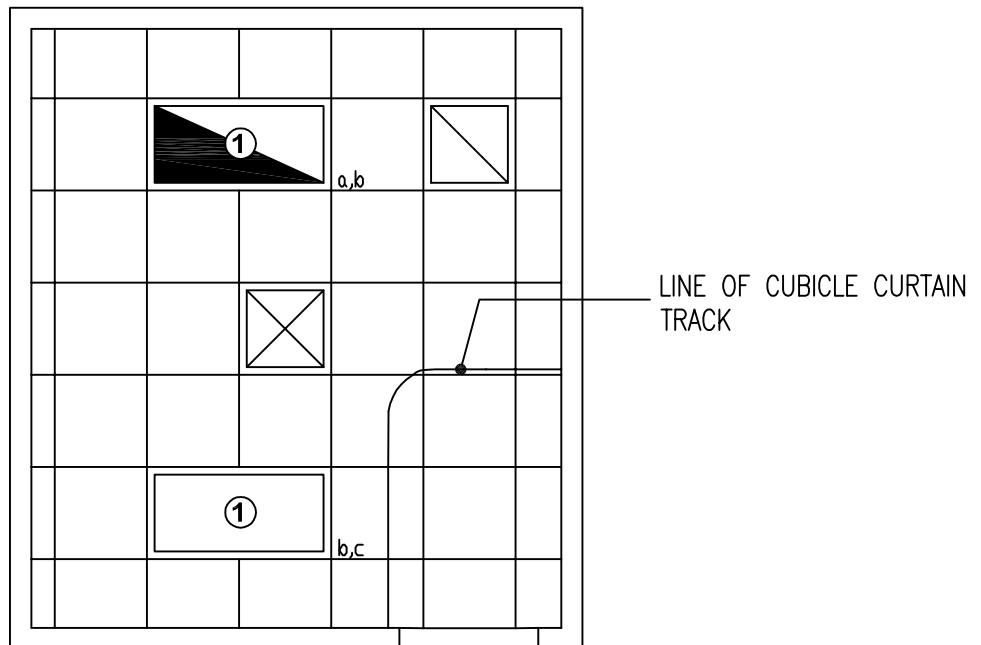
Gastroenterology Procedure Treatment Room Equipment & Utility Plan



NOTE:
WHEELCHAIR TOILET ADJACENT.

13.9 NSM
150 NSF

Gastroenterology Procedure Treatment Room Reflected Ceiling Plan



LEGEND

① 2' x 4' FLUORESCENT

Design Standards

Gastroenterology Procedure / Treatment Room

ARCHITECTURAL

Coordinate with SFO; refer to Template SFO Section 7, and Schedule C.

Ceiling:	GWB Lay-in Panels
Ceiling Height:	2740 mm (9'-0")
Wall Finish:	Painted GWB
Wainscot:	--
Base:	Resilient Sheet Flooring
Floor Finish:	Resilient Sheet Flooring
Slab Depression:	--
Sound Protection:	STC 40
Notes:	--

LIGHTING

Coordinate with SFO; refer to Template SFO Section 6.7, 6.7.1, 6.7.5.

General:	50-100 FC
Special:	--
Notes:	<ol style="list-style-type: none"> 2' X 4' recessed fluorescent light fixture with acrylic prismatic lens. 50% of light fixture on emergency system critical power source.

POWER

Coordinate with SFO; refer to Template SFO Section 6.7, 6.7.1, 6.7.3, 6.7.4 and Schedule B.

General:	Yes
Emergency:	Yes
Notes:	<ol style="list-style-type: none"> Junction box x-ray illuminator. Connect per equipment manufacturer. Recessed floor mounted junction box for exam and treatment table. Connection to equipment per manufacturer. Provide dedicated circuit. Verify wattage, voltage, and phase. Portable exam light.

COMMUNICATION/SPECIAL SYSTEMS

Coordinate with SFO; refer to Template SFO Sections 6.7.8, 6.7.9, and Schedule B.

Data:	Yes
Telephone:	Yes

Intercom:	--
Nurse Call:	Yes
Public Address:	--
Radio/Entertainment:	--
MATV:	--
CCTV:	--
MID:	--
Security/Duress:	--
VTEL:	--
VA Satellite TV:	--
Notes:	--

HEATING, VENTILATING AND AIR CONDITIONING

Coordinate with SFO; refer to Template SFO Section 6.5.

Dry Bulb Temp Cooling:	22°C (73°F)
Dry Bulb Temp Heating:	26°C (78°F)
Minimum % Outside Air:	
100% Exhaust Air:	Yes
Noise Criteria:	NC-40
Steam:	--
Relative Humidity/Cooling:	50%
Relative Humidity/Heating:	30%
Minimum Air Changes/Hr.:	10
Room Pressure:	Negative
AC Load-Equipment:	6 W/SF
AC Load-Lighting:	1/6 W/SF
Number of People:	3
Special Exhaust:	--
Notes:	--

PLUMBING AND MEDICAL GASES

Coordinate with SFO; refer to Template SFO Section 6.6 and Schedule B

Cold Water:	Yes
Hot Water:	Yes
Laboratory Air:	--
Laboratory Vacuum:	--
Sanitary Drain:	Yes
Reagent grade Water:	--
Medical Air:	--
Medical Vacuum:	--
Oxygen:	--
Notes:	--

Equipment Guide List

Gastroenterology Procedure / Treatment Room

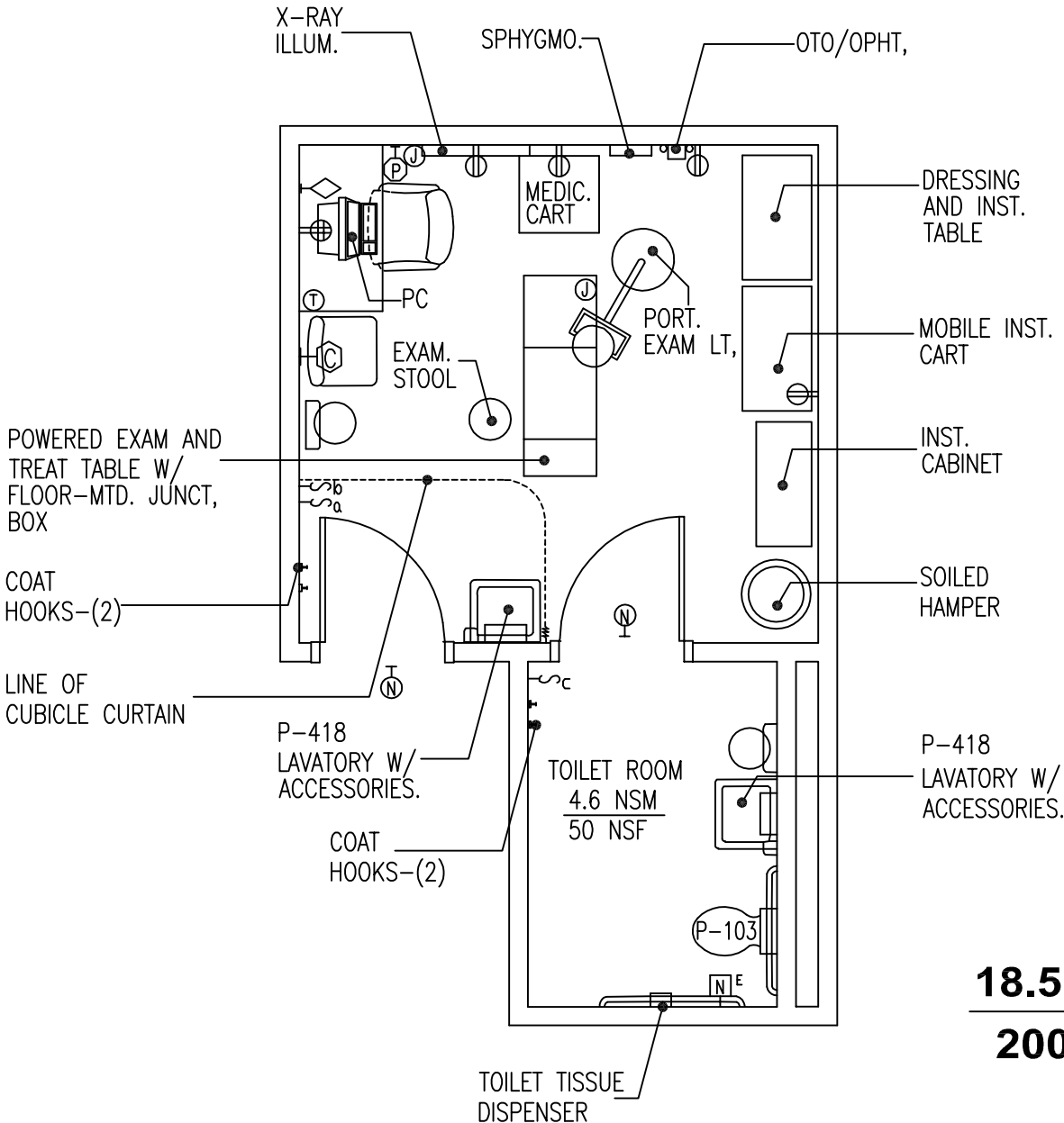
Coordinate equipment selections with medical program. Refer to Sections 5 and 6 in the Design Guide for Lease Based Outpatient Clinics for additional guidance. Identify acquisition method(s) for equipment and utilities (Lessor Furnished, VA Furnished, or VA Furnished/Lessor Installed); coordinate with SFO Section 6.3 and Schedule B.

FIXED EQUIPMENT AND UTILITIES		
SYMBOL	QTY	DESCRIPTION
P-418	1	LAVATORY, SENSOR CONTROL (PG-18-1, MCS 15450; PG-18-4, SD 15450-17.DWG)
T45	1	SHELF, CRS, 300 MM x 125 MM (12" x 5") (PG-18-1, MCS 10801; PG-18-4, SD 10801-1)
	1	JUNCTION BOX, FLOOR, 120 V POWER FOR EXAM TABLE (PG-18-1, MCS 16140)
	1	TRACK, CUBICLE CURTAIN, CEILING TYPE, SURFACE MOUNTED (PG-18-4, MCS 10152)
	1	OUTLET, TELEPHONE/DATA, WALL MOUNTED (PG-18-1, MCS 16742)
	1	RECEPTACLE, ELECTRICAL, QUADRAPLEX, FOR COMPUTER EQUIPMENT ITEMS (PG-18-1, MCS 16140)
	AR	RECEPTACLE, ELECTRICAL, DUPLEX (PG-18-1, MCS 16140)
	1	NURSE CALL, CODE 1 (BLUE), EMERGENCY STATION, WITH CORRIDOR SIGNAL LIGHT, (PG-18-1, MCS 16761).
	1	ALARM BUTTON, SECURITY/DURESS, (PG-18-1, MCS 16765)

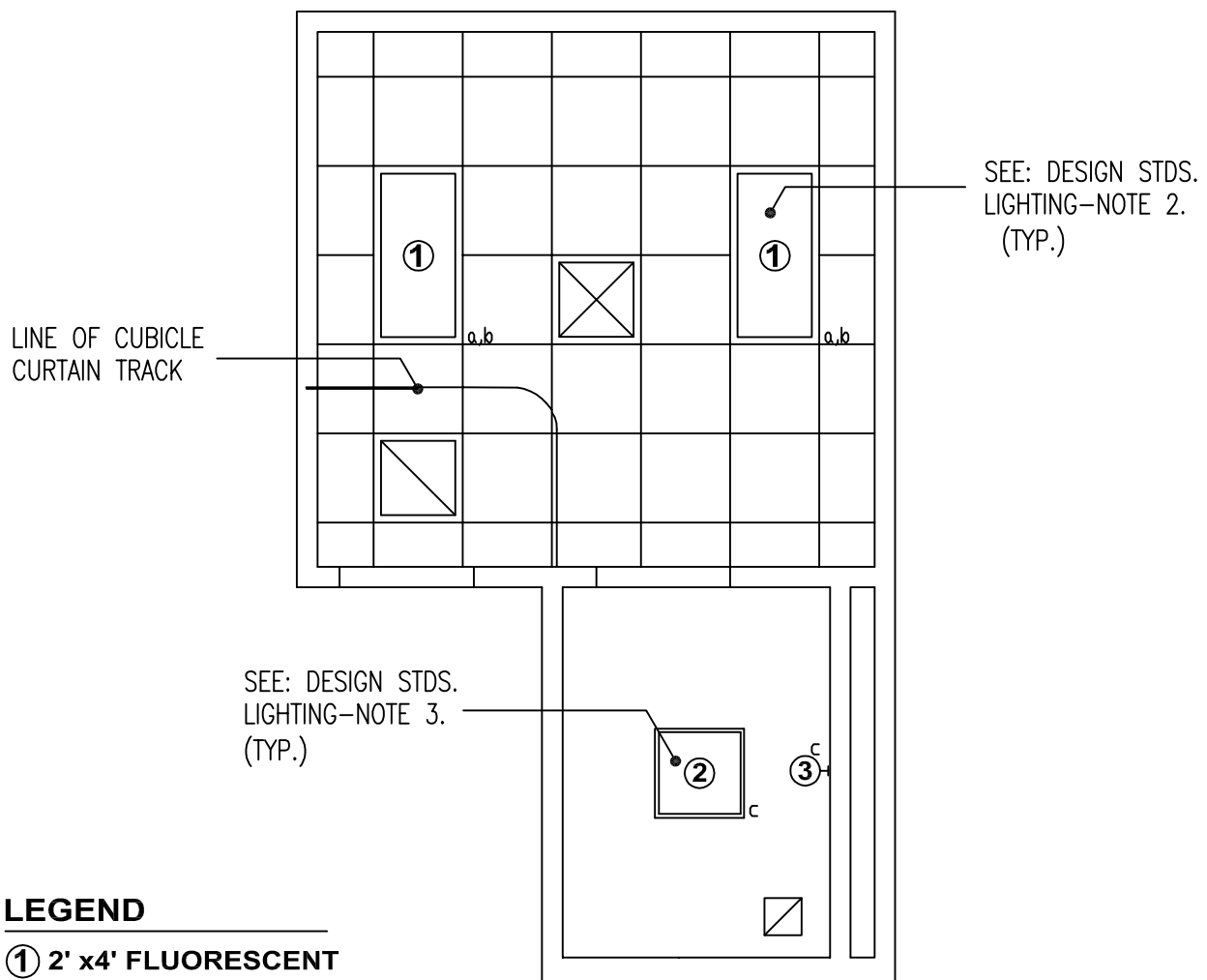
FURNISHINGS AND MOVABLE EQUIPMENT		
SYMBOL	QTY	DESCRIPTION
	1	CABINET, INSTRUMENT AND TREATMENT, 910 MM W x 405 MM D x 1980 MM H (36"W x 16"D x 78"H)
	AR	CART, MOBILE, INSTRUMENT, 910 MM x 500 MM (36" x 20")
	1	CHAIR, ROTARY, WITH ARMS
	1	CHAIR, STRAIGHT, WITHOUT ARMS
	1	CLOCK, BATTERY OPERATED
	1	PC, COMPUTER SYSTEM, WITH KEYBOARD
	1	DESK, SINGLE PEDESTAL, 1200 MM W x 760 MM D x 760 MM H (48"W x 30"D x 30"H)
	1	DISPENSER, BIFOLD PAPER TOWEL, SURFACE MOUNTED
	1	DISPENSER, SOAP, LIQUID, WALL MOUNTED
	1	HAMPER, SOILED LINEN, WITH HINGED SELF CLOSING TOP, 500 MM (20") DIAMETER
	AR	HOOK, COAT, WALL MOUNTED
	1	ILLUMINATOR, X-RAY FILM, 120 VOLTS, 150 WATTS, WALL MOUNTED, INDIVIDUAL SWITCH FOR TWO, 355 MM x 430 MM (14" x 17") RADIOGRAPHS, 790 MM W x 500 MM H (31"W x 20"H)
	AR	LIGHT, EXAMINING, PORTABLE, 120 VOLTS, 20 AMPS, APPROX., 455 MM (18") DIAMETER X 1905 MM (75"H)
	1	OTOSCOPE / OPHTHALMOSCOPE, WALL HUNG
	1	RECEPTACLE, WASTE, STEP ON TYPE, APPROX., 305 MM (12") DIAMETER
	1	SPHYGMOMANOMETER, WALL HUNG
	1	STOOL, EXAMINING, ADJUSTABLE

FURNISHINGS AND MOVABLE EQUIPMENT		
SYMBOL	QTY	DESCRIPTION
	1	TABLE, INSTRUMENT, DRESSING, CORROSION RESISTING STEEL, 500 MM W x 910 MM L x 860 MM H (20"W x 36"L x 35"H)
	1	TABLE, EXAMINING AND TREATMENT, MOTORIZED
	1	CURTAIN, CUBICLE

Gastric (Esophageal) Motility Procedure Room Equipment & Utility Plan



Gastric (Esophageal) Motility Procedure Room Reflected Ceiling Plan



LEGEND

- ① 2' x 4' FLUORESCENT
- ② 2' x 2' FLUORESCENT
- ③ WALL MOUNTED FLUORESCENT

Design Standards

Gastric (Esophageal) Motility Procedure Room

ARCHITECTURAL

Coordinate with SFO; refer to Template SFO Section 7, and Schedule C.

Ceiling:	AT
Ceiling Height:	2740 mm (9'-0")
Wall Finish:	Painted GWB
Wainscot:	CT in Toilet Room
Base:	Resilient Sheet Flooring CT in Toilet Room
Floor Finish:	Resilient Sheet Flooring CT in Toilet Room
Slab Depression:	--
Sound Protection:	--
Notes:	--

LIGHTING

Coordinate with SFO; refer to Template SFO Section 6.7, 6.7.1, 6.7.5.

General:	50-100 FC
Special:	--
Notes:	<ol style="list-style-type: none"> 2' X 4' recessed fluorescent light fixture with acrylic prismatic lens. 2' X 2' recessed fluorescent light fixture with acrylic prismatic lens.

POWER

Coordinate with SFO; refer to Template SFO Section 6.7, 6.7.1, 6.7.3, 6.7.4 and Schedule B.

General:	Yes
Emergency:	--
Notes:	<ol style="list-style-type: none"> Junction box x-ray illuminator. Connect per equipment manufacturer. Recessed floor mounted junction box for exam and treatment table. Connection to equipment per manufacturer. Provide dedicated circuit. Verify wattage, voltage, and phase. Portable exam light.

COMMUNICATION/SPECIAL SYSTEMS

Coordinate with SFO; refer to Template SFO Sections 6.7.8, 6.7.9, and Schedule B.

Data:	Yes
Telephone:	Yes
Intercom:	--
Nurse Call:	Yes
Public Address:	--
Radio/Entertainment:	--
MATV:	--
CCTV:	--
MID:	--
Security/Duress:	--
VTEL:	--
VA Satellite TV:	--
Notes:	--

HEATING, VENTILATING AND AIR CONDITIONING

Coordinate with SFO; refer to Template SFO Section 6.5.

Dry Bulb Temp Cooling:	22°C (73°F)
Dry Bulb Temp Heating:	26°C (78°F)
Minimum % Outside Air:	
100% Exhaust Air:	Yes
Noise Criteria:	NC-40
Steam:	--
Relative Humidity/Cooling:	50%
Relative Humidity/Heating:	30%
Minimum Air Changes/Hr.:	10
Room Pressure:	Negative
AC Load-Equipment:	6 W/SF
AC Load-Lighting:	1.6 W/SF
Number of People:	3
Special Exhaust:	--
Notes:	--

PLUMBING AND MEDICAL GASES

Coordinate with SFO; refer to Template SFO Section 6.6 and Schedule B

Cold Water:	Yes
Hot Water:	Yes
Laboratory Air:	--
Laboratory Vacuum:	--
Sanitary Drain:	Yes
Reagent grade Water:	--
Medical Air:	--
Medical Vacuum:	--
Oxygen:	--
Notes:	--

Equipment Guide List

Gastric (Esophageal) Motility Procedure Room

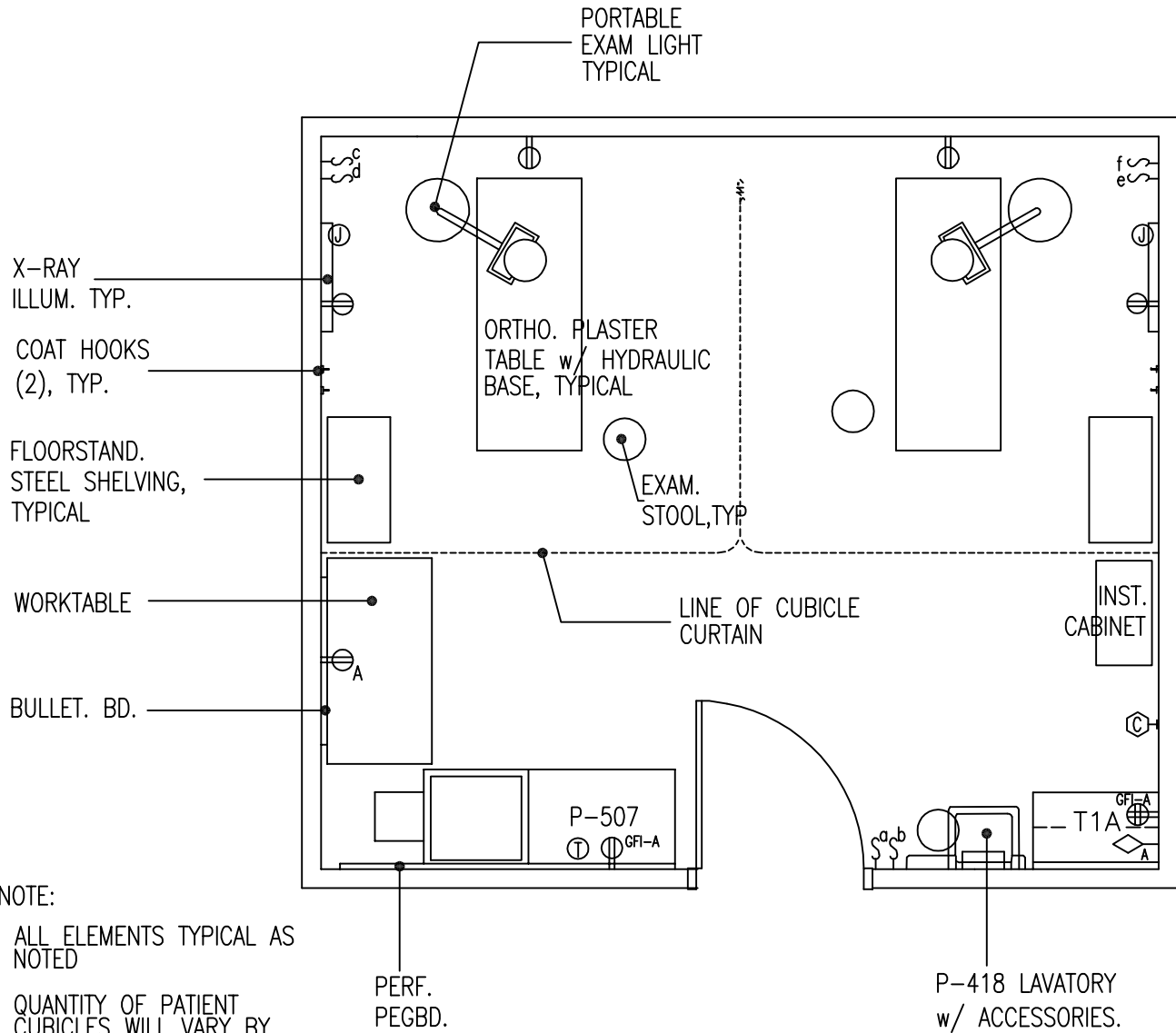
Coordinate equipment selections with medical program. Refer to Sections 5 and 6 in the Design Guide for Lease Based Outpatient Clinics for additional guidance. Identify acquisition method(s) for equipment and utilities (Lessor Furnished, VA Furnished, or VA Furnished/Lessor Installed); coordinate with SFO Section 6.3 and Schedule B.

FIXED EQUIPMENT AND UTILITIES		
SYMBOL	QTY	DESCRIPTION
P-418	1	LAVATORY, SENSOR CONTROL (PG-18-1, MCS 15450; PG-18-4, SD 15450-17.DWG)
	1	JUNCTION BOX, FLOOR, 120 VOLTS POWER FOR EXAM TABLE (PG-18-1, MCS 16140)
P-103	1	WATER CLOSET, WALL HUNG (PG-18-1, MCS 15450)
	1	DISPENSER, TOILET TISSUE, DOUBLE ROLL (PG-18-1, MCS 10800; PG-18-4, SD 10162-1.DWG)
P-418	1	LAVATORY, SENSOR CONTROL (HPG-18-1, MCS 15450; PG-18-4, SD 15450-17.DWG)
T45	1	SHELF, CORROSION RESISTING STEEL, 305 MM x 127 MM (12" x 5") (PG-18-1, MCS 10801; PG-18-4, SD 10801-1.DWG)
	AR	BAR, GRAB FOR WATER CLOSET (PG-18-1, MCS 10800; PG-18-4, SD 10162-11.DWG)
	2	HOOK, CLOTHES (PG-18-1, MCS 10800)
	1	MIRROR, WHEELCHAIR, 610 MM W x 910 MM H (24"W x 36"H) (PG-18-1, MCS 10800; PG-18-4, SD 10800-7.DWG)
	1	OUTLET, TELEPHONE/DATA, WALL MOUNTED (PG-18-1, MCS 16742)
	1	RECEPTACLE, ELECTRICAL, QUADRAPLEX, FOR COMPUTER EQUIPMENT ITEMS (PG-18-1, MCS 16140)
	AR	RECEPTACLE, ELECTRICAL, DUPLEX (PG-18-1, MCS 16140)
	1	NURSE CALL, CODE 1 (BLUE), EMERGENCY STATION, WITH CORRIDOR SIGNAL LIGHT, (PG-18-1, MCS 16761).
	1	ALARM BUTTON, SECURITY/DURESS, (PG-18-1, MCS 16765)

FURNISHINGS AND MOVABLE EQUIPMENT		
SYMBOL	QTY	DESCRIPTION
	1	CABINET, INSTRUMENT AND TREATMENT, 910 MM W x 405 MM D x 1980 MM H (36"W x 16"D x 78"H)
	1	CART, MEDICATION, WITH IV POLE
	AR	CART, MOBILE, INSTRUMENT, 910 MM x 500 MM (36" x 20")
	1	CHAIR, ROTARY, WITH ARMS
	AR	CHAIR, STRAIGHT, WITHOUT ARMS
	1	CLOCK, BATTERY OPERATED
	1	PC, COMPUTER SYSTEM, WITH KEYBOARD
	1	DESK, SINGLE PEDESTAL, 1200 MM W x 760 MM D x 760 MM H (48"W x 30"D x 30"H)
	1	DISPENSER, BIFOLD PAPER TOWEL, SURFACE MOUNTED
	1	DISPENSER, SOAP, LIQUID, WALL MOUNTED
	AR	HAMPER, SOILED LINEN, WITH HINGED SELF CLOSING TOP 500 MM (20") DIAMETER
	AR	HOOK, CLOTHES, WALL MOUNTED

FURNISHINGS AND MOVABLE EQUIPMENT		
SYMBOL	QTY	DESCRIPTION
	1	ILLUMINATOR, X-RAY FILM, 120 VOLTS, 150 WATTS, WALL MOUNTED, INDIVIDUAL SWITCH FOR TWO, 355 MM x 430 MM (14" x 17") RADIOGRAPHS, 790 MM W x 500 MM H (31"W x 20"H)
	AR	LIGHT, EXAMINING, PORTABLE, 120 VOLTS, 20 AMPS APPROX., 455 MM (18") DIAMETER x 1905 MM H (75"H)
	1	MANOMETER, ESOPHAGEAL, WITH RECORDER
	1	OPHTHALMOSCOPE, WALL HUNG
	1	OTOSCOPE, WALL HUNG
	1	RECEPTACLE, WASTE, STEP-ON TYPE, APPROX., 305 MM (12") DIAMETER
	1	SPHYGMOMANOMETER, WALL HUNG
	1	STOOL, EXAMINING, ADJUSTABLE
	1	TABLE, INSTRUMENT, DRESSING, CORROSION RESISTING STEEL, 500 MM W x 910 MM L x 890 MM H (20"W x 36"L x 35"H)
	1	TABLE, EXAMINING AND TREATMENT, MOTORIZED
	1	CURTAIN, CUBICLE
	1	DISPENSER, SOAP, LIQUID, WALL MOUNTED
	1	DISPENSER, BIFOLD PAPER TOWEL, SURFACE MOUNTED
	1	RECEPTACLE, WASTE, STEP-ON TYPE, APPROX., 305 MM (12") DIAMETER

Orthopedic Clinic/Cast Room Equipment & Utility Plan



NOTE:

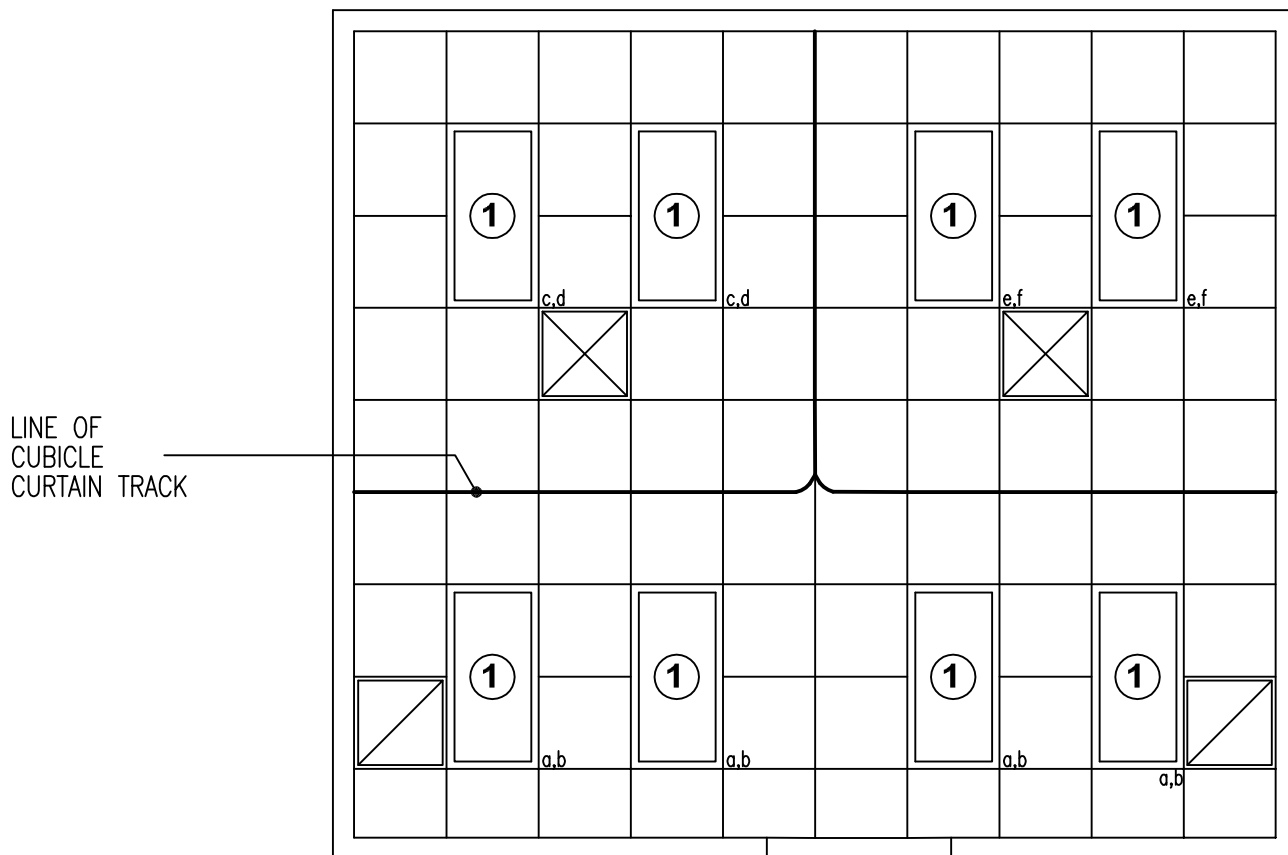
1. ALL ELEMENTS TYPICAL AS NOTED
2. QUANTITY OF PATIENT CUBICLES WILL VARY BY PROJECT
3. ALLOW 100 NSF/9.3 NSM MINIMUM PER CUBICLE
4. DRESSING CUBICLES ADJACENT (2)

ASSUMPTION:

3,001 TO 6,000 CLINIC STOPS
=350 NSF

32.5 NSM
350 NSF

Orthopedic Clinic/Cast Room Reflected Ceiling Plan



LINE OF
CUBICLE
CURTAIN TRACK

LEGEND

① 2' x 4' FLUORESCENT

Design Standards

Orthopedic Clinic / Cast Room

ARCHITECTURAL

Coordinate with SFO; refer to Template SFO Section 7, and Schedule C.

Ceiling:	AT
Ceiling Height:	2740 mm (9'-0")
Wall Finish:	Painted GWB
Wainscot:	--
Base:	Resilient Sheet Flooring
Floor Finish:	Resilient Sheet Flooring
Slab Depression:	--
Sound Protection:	STC 40
Notes:	--

LIGHTING

Coordinate with SFO; refer to Template SFO Section 6.7, 6.7.1, 6.7.5.

General:	1. 70-100 FC for each cubicle. 2. 50 FC work area
Special:	--
Notes:	1. 2' X 4' recessed fluorescent light fixture with acrylic prismatic lens.

POWER

Coordinate with SFO; refer to Template SFO Section 6.7, 6.7.1, 6.7.3, 6.7.4 and Schedule B.

General:	Yes
Emergency:	--
Notes:	1. Junction box x-ray illuminator. Connect per equipment manufacturer. 2. Portable exam light.

COMMUNICATION/SPECIAL SYSTEMS

Coordinate with SFO; refer to Template SFO Sections 6.7.8, 6.7.9, and Schedule B.

Data:	Yes
Telephone:	Yes
Intercom:	--
Nurse Call:	--
Public Address:	--
Radio/Entertainment:	--
MATV:	--
CCTV:	--
MID:	--
Security/Duress:	--
VTEL:	--
VA Satellite TV:	--
Notes:	--

HEATING, VENTILATING AND AIR CONDITIONING

Coordinate with SFO; refer to Template SFO Section 6.5.

Dry Bulb Temp Cooling:	26°C (78°F)
Dry Bulb Temp Heating:	22°C (72°F)
Minimum % Outside Air:	
100% Exhaust Air:	--
Noise Criteria:	NC-40
Steam:	--
Relative Humidity/Cooling:	50%
Relative Humidity/Heating:	30%
Minimum Air Changes/Hr.:	10
Room Pressure:	Negative
AC Load-Equipment:	5.0 W/SF
AC Load-Lighting:	1.6 W/SF
Number of People:	4
Special Exhaust:	--
Notes:	--

PLUMBING AND MEDICAL GASES

Coordinate with SFO; refer to Template SFO Section 6.6 and Schedule B

Cold Water:	Yes
Hot Water:	Yes
Laboratory Air:	--
Laboratory Vacuum:	--
Sanitary Drain:	Yes
Reagent grade Water:	--
Medical Air:	--
Medical Vacuum:	--
Oxygen:	--
Notes:	--

Equipment Guide List

Orthopedic Clinic / Cast Room

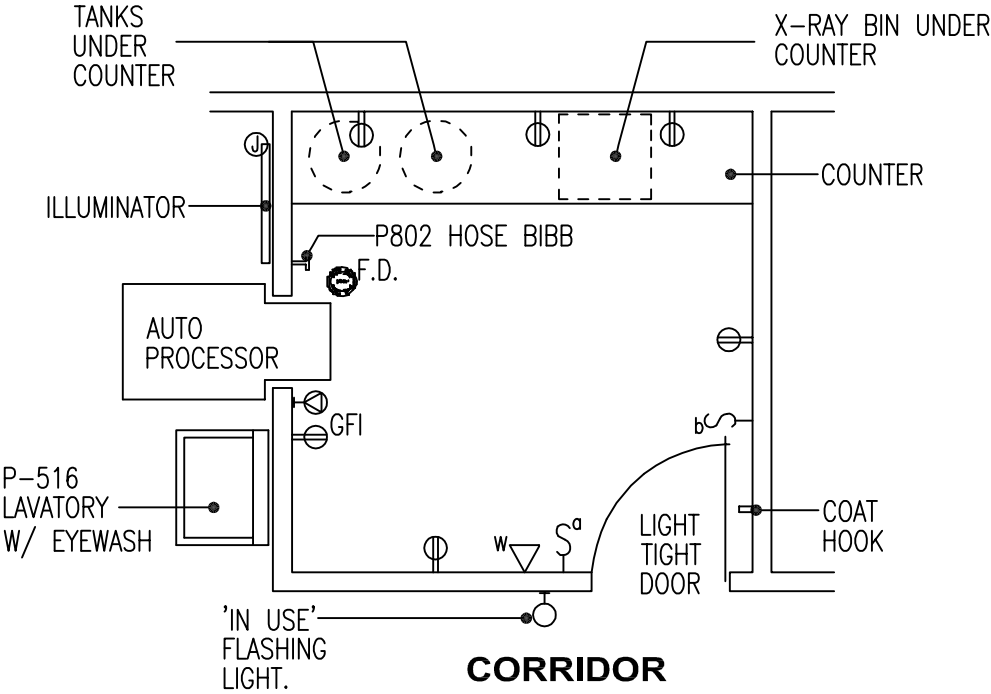
Coordinate equipment selections with medical program. Refer to Sections 5 and 6 in the Design Guide for Lease Based Outpatient Clinics for additional guidance. Identify acquisition method(s) for equipment and utilities (Lessor Furnished, VA Furnished, or VA Furnished/Lessor Installed); coordinate with SFO Section 6.3 and Schedule B.

FIXED EQUIPMENT AND UTILITIES		
SYMBOL	QTY	DESCRIPTION
T1A	1	CABINET, BASE WITH 2 DRAWERS, 2 HINGED DOORS AND 1 ADJUSTABLE SHELF, 910 MM W x 555 MM D x 910 MM H (36"W x 22"D x 36"H), CORROSION RESISTING STEEL TOP AND SPLASHBACKS, WITH WALL CABINET ABOVE WITH SLOPING TOP, 2 GLAZED SLIDING DOORS AND 2 ADJUSTABLE GLASS SHELVES (PG-18-1, MCS 12301)
P-418	1	LAVATORY, SENSOR CONTROL (PG-18-1, MCS 15450; PG-18-4, SD 15450-17.DWG)
	1	PEGBOARD, PERFORATED, HEAVY DUTY, WITH HANGERS, 1220 MM x 2440 MM (48" x 96") (PG-18-1, MCS 06200)
T45	1	SHELF, CORROSION RESISTING STEEL, 305 MM W x 125 MM D (12"W x 5"D) (PG-18-1, MCS 10801; PG-18-4, SD 10801-1G)
P-507	1	SINK, PLASTER, SINGLE COMPARTMENT, CRS DRAINBOARD WITHOUT CORRUGATIONS (PG-18-1, MCS 15450)
	1	TRACK, CUBICLE CURTAIN, CEILING TYPE, SURFACE MOUNTED (PG-18-4, MCS 10152)
	1	OUTLET, TELEPHONE/DATA, WALL MOUNTED (PG-18-1, MCS 16742)
	1	RECEPTACLE, ELECTRICAL, QUADRAPLEX, FOR COMPUTER EQUIPMENT ITEMS (PG-18-1, MCS 16140)
	AR	RECEPTACLE, ELECTRICAL, DUPLEX (PG-18-1, MCS 16140)
	1	ALARM BUTTON, SECURITY/DURESS, (PG-18-1, MCS 16765)

FURNISHINGS AND MOVABLE EQUIPMENT		
SYMBOL	QTY	DESCRIPTION
	1	BULLETIN BOARD, 1220 MM W x 91 MM H (48"W x 36"H)
	1	CABINET, INSTRUMENT AND DRESSING, 760 MM W x 405 MM D x 1520 MM H (30"W x 16"D x 60"H)
	1	CLOCK, BATTERY OPERATED
	1	DISPENSER, BIFOLD PAPER TOWEL, SURFACE MOUNTED
	1	DISPENSER, SOAP, LIQUID, WALL MOUNTED
	2	HOOK, COAT, WALL MOUNTED
	AR	ILLUMINATOR, X-RAY FILM, 120 VOLTS, 150 WATTS, WALL MOUNTED, INDIVIDUAL SWITCH FOR TWO, 255 MM x 455 MM (14" x 17") RADIOGRAPHS, 790 MM W x 500 H (31"W x 20"H)
	AR	LIGHT, EXAMINING, PORTABLE, 120 VOLTS, 20 AMPS, APPROX., 455 MM DIAMETER x 1900 MM H (18" DIAMETER x 75"H)
	1	RECEPTACLE, WASTE, STEP ON TYPE, APPROX., 305 MM (12") DIAMETER
	AR	CURTAIN, CUBICLE
	AR	SHELVING, FLOORSTANDING, STEEL, 4 OR 5 ADJUSTABLE SHELVES, 910 MM W x 455 MM D x 2130 MM H (36"W x 18"D x 84"H)
	1	STOOL, EXAMINING, ADJUSTABLE

FURNISHINGS AND MOVABLE EQUIPMENT		
SYMBOL	QTY	DESCRIPTION
	1	TABLE, ORTHOPEDIC, PORTABLE PLASTER TABLE, HYDRAULIC BASE
	1	TABLE, WORK, CORROSION RESISTING STEEL TOP, METAL FRAME, 1 DRAWER AND 1 SHELF, 1520 MM W x 760 MM D x 860 MM H (60"W x 30"D x 34"H)

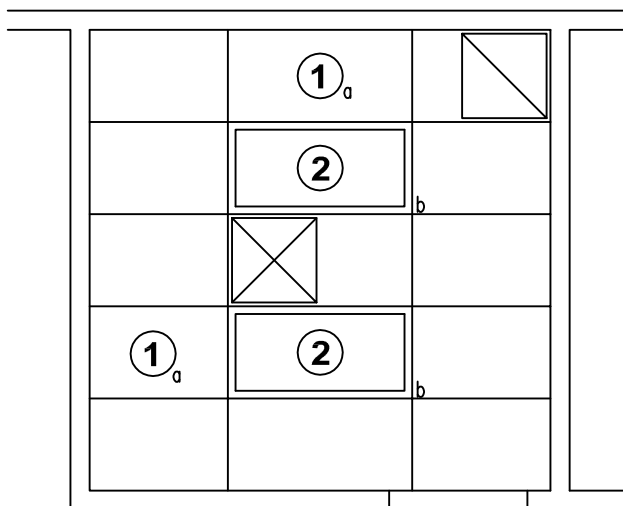
Radiology - Film Processing Room Equipment & Utility Plan



NOTE:
AUTO PROCESSOR REQUIRES 30 AMP
FEED AND NEEDS TO BE VENTED.

9.3 NSM
100 NSF

Radiology - Film Processing Room Reflected Ceiling Plan



LEGEND

① RECESSED SAFE LIGHT
INCANDESCENT

② 2'x4' FLUORESCENT

Design Standards

Radiology – Film Processing Room

ARCHITECTURAL

Coordinate with SFO; refer to Template SFO Section 7, and Schedule C.

Ceiling:	AT
Ceiling Height:	2740 mm (9'-0")
Wall Finish:	Painted GWB
Wainscot:	--
Base:	Resilient Base
Floor Finish:	Vinyl Composition Tile
Slab Depression:	--
Sound Protection:	--
Notes:	--

LIGHTING

Coordinate with SFO; refer to Template SFO Section 6.7, 6.7.1, 6.7.5.

General:	White light source 30-40 FC (non-film development mode)
Special:	1. Provide recessed safe light.
Notes:	1. Safe light controlled by switch at door. When switch is on "in-use" warning light (flashing) will be operational. 2. White light source switch located at maximum door swing position. Provide switch with red pilot light illuminated in off position.

POWER

Coordinate with SFO; refer to Template SFO Section 6.7, 6.7.1, 6.7.3, 6.7.4 and Schedule B.

General:	Yes
Emergency:	--
Notes:	1. Auto processor requires a 300A feed. Connection to equipment per manufacturer. Provide dedicated circuit. Verify wattage, voltage, and phase.

COMMUNICATION/SPECIAL SYSTEMS

Coordinate with SFO; refer to Template SFO Sections 6.7.8, 6.7.9, and Schedule B.

Data:	--
Telephone:	Yes
Intercom:	--

Nurse Call:	--
Public Address:	--
Radio/Entertainment:	--
MATV:	--
CCTV:	--
MID:	--
Security/Duress:	--
VTEL:	--
VA Satellite TV:	--
Notes:	--

HEATING, VENTILATING AND AIR CONDITIONING

Coordinate with SFO; refer to Template SFO Section 6.5.

Dry Bulb Temp Cooling:	26°C (78°F)
Dry Bulb Temp Heating:	22°C (72°F)
Minimum % Outside Air:	
100% Exhaust Air:	Yes
Noise Criteria:	NC-40
Steam:	--
Relative Humidity/Cooling:	50%
Relative Humidity/Heating:	30%
Minimum Air Changes/Hr.:	10
Room Pressure:	Negative
AC Load-Equipment:	7.5 W/SF
AC Load-Lighting:	1.6 W/SF
Number of People:	1
Special Exhaust:	--
Notes:	Refer to manufacturer's information for autoprocessor exhaust.

PLUMBING AND MEDICAL GASES

Coordinate with SFO; refer to Template SFO Section 6.6 and Schedule B

Cold Water:	Yes
Hot Water:	Yes
Laboratory Air:	--
Laboratory Vacuum:	--
Sanitary Drain:	Yes
Reagent grade Water:	--
Medical Air:	--
Medical Vacuum:	--
Oxygen:	--
Notes:	Chemical resistant drain.

Equipment Guide List

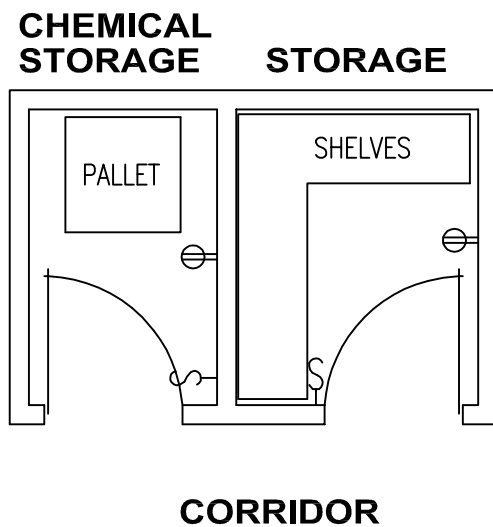
Radiology – Film Processing Room

Coordinate equipment selections with medical program. Refer to Sections 5 and 6 in the Design Guide for Lease Based Outpatient Clinics for additional guidance. Identify acquisition method(s) for equipment and utilities (Lessor Furnished, VA Furnished, or VA Furnished/Lessor Installed); coordinate with SFO Section 6.3 and Schedule B.

FIXED EQUIPMENT AND UTILITIES		
SYMBOL	QTY	DESCRIPTION
	2	SAFELIGHT (PG-18-1, MCS 16510)
	AR	DOORS, LIGHTPROOF OR LIGHT LOCK DOOR IF SPECIFIED (PG-18-1, MCS 11471)
P-516	1	SINK, CORROSION RESISTING STEEL, SINGLE COMPARTMENT, WALL HUNG (PT-18-1, MCS 15450)
	1	DISPENSER, PAPER TOWEL AND DISPOSAL COMBINATION UNITS (PG-18-1, MCS 10800)
	1	SWITCH, DISCONNECT FOR FILM PROCESSOR (PG-18-1, MCS 16170)
	1	FLOOR DRAIN (PG-18-1, MCS 15450)
	1	WATER SUPPLY, COLD, FILM
P-802	1	HOSE BIBB, COMBINATION FAUCET, WALL MOUNTED, CONCEALED SUPPLY (PG-18-1, MCS 15450)
	1	OUTLET, TELEPHONE, WALL MOUNTED (PG-18-1, MCS 16742)
	AR	RECEPTACLE, ELECTRICAL, DUPLEX (PG-18-1, MCS 16140)

FURNISHINGS AND MOVABLE EQUIPMENT		
SYMBOL	QTY	DESCRIPTION
	1	PROCESSOR, FILM, AUTOMATIC, 90 SECOND PROCESSING CYCLE
	AR	ILLUMINATOR, X-RAY FILM, WALL MOUNTED, 120 VOLT, 150 WATTS, INDIVIDUAL SWITCH FOR TWO 14" x 17" RADIOGRAPHS, 31"W x 20"H

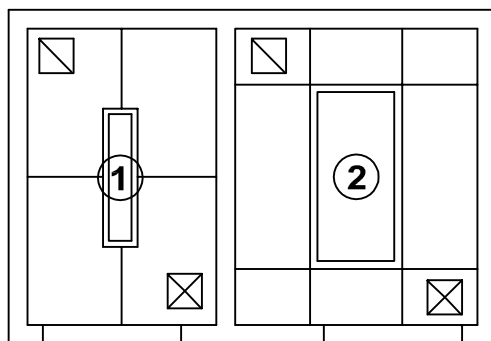
Radiology - Storage, Unexposed Film & Chemicals Equipment & Utility Plan



5.6 NSM

60 NSF

Radiology - Storage, Unexposed Film & Chemicals Reflected Ceiling Plan



LEGEND

① 1'x4' FLUORESCENT

② 2'x4' FLUORESCENT

Design Standards

Radiology – Storage, Unexposed Film & Chemicals

ARCHITECTURAL

Coordinate with SFO; refer to Template SFO Section 7, and Schedule C.

Ceiling: GWB
 Ceiling Height: 2740 mm (9'-0")
 Wall Finish: Painted GWB
 Wainscot: --
 Base: LM
 Floor Finish: LM
 Slab Depression: --
 Sound Protection: --
 Notes: --

LIGHTING

Coordinate with SFO; refer to Template SFO Section 6.7, 6.7.1, 6.7.5.

General: 30 FC
 Special: 1. Provide 1' X 4' surface mounted hazardous location fixture classified for use. Chemical storage room.
 Notes: 1. Provide seal off fitting as required.

POWER

Coordinate with SFO; refer to Template SFO Section 6.7, 6.7.1, 6.7.3, 6.7.4 and Schedule B.

General: Yes
 Emergency: --
 Notes: 1. Provide hazardous classified wiring device for use. Chemical storage room. Provide seal off fittings as required.

COMMUNICATION/SPECIAL SYSTEMS

Coordinate with SFO; refer to Template SFO Sections 6.7.8, 6.7.9, and Schedule B.

Data: --
 Telephone: --
 Intercom: --
 Nurse Call: --
 Public Address: --
 Radio/Entertainment: --
 MATV: --
 CCTV: --
 MID: --

Security/Duress: --
 VTEL: --
 VA Satellite TV: --
 Notes: --

HEATING, VENTILATING AND AIR CONDITIONING

Coordinate with SFO; refer to Template SFO Section 6.5.

Dry Bulb Temp Cooling: 26°C (78°F)
 Dry Bulb Temp Heating: 22°C (72°F)
 Minimum % Outside Air: --
 100% Exhaust Air: Yes
 Noise Criteria: NC-40
 Steam: --
 Relative Humidity/Cooling: 50%
 Relative Humidity/Heating: 30%
 Minimum Air Changes/Hr.: 4
 Room Pressure: Negative
 AC Load-Equipment: 0
 AC Load-Lighting: 1.6 W/SF
 Number of People: 0
 Special Exhaust: --
 Notes: --

PLUMBING AND MEDICAL GASES

Coordinate with SFO; refer to Template SFO Section 6.6 and Schedule B

Cold Water: --
 Hot Water: --
 Laboratory Air: --
 Laboratory Vacuum: --
 Sanitary Drain: --
 Reagent grade Water: --
 Medical Air: --
 Medical Vacuum: --
 Oxygen: --
 Notes: --

Equipment Guide List

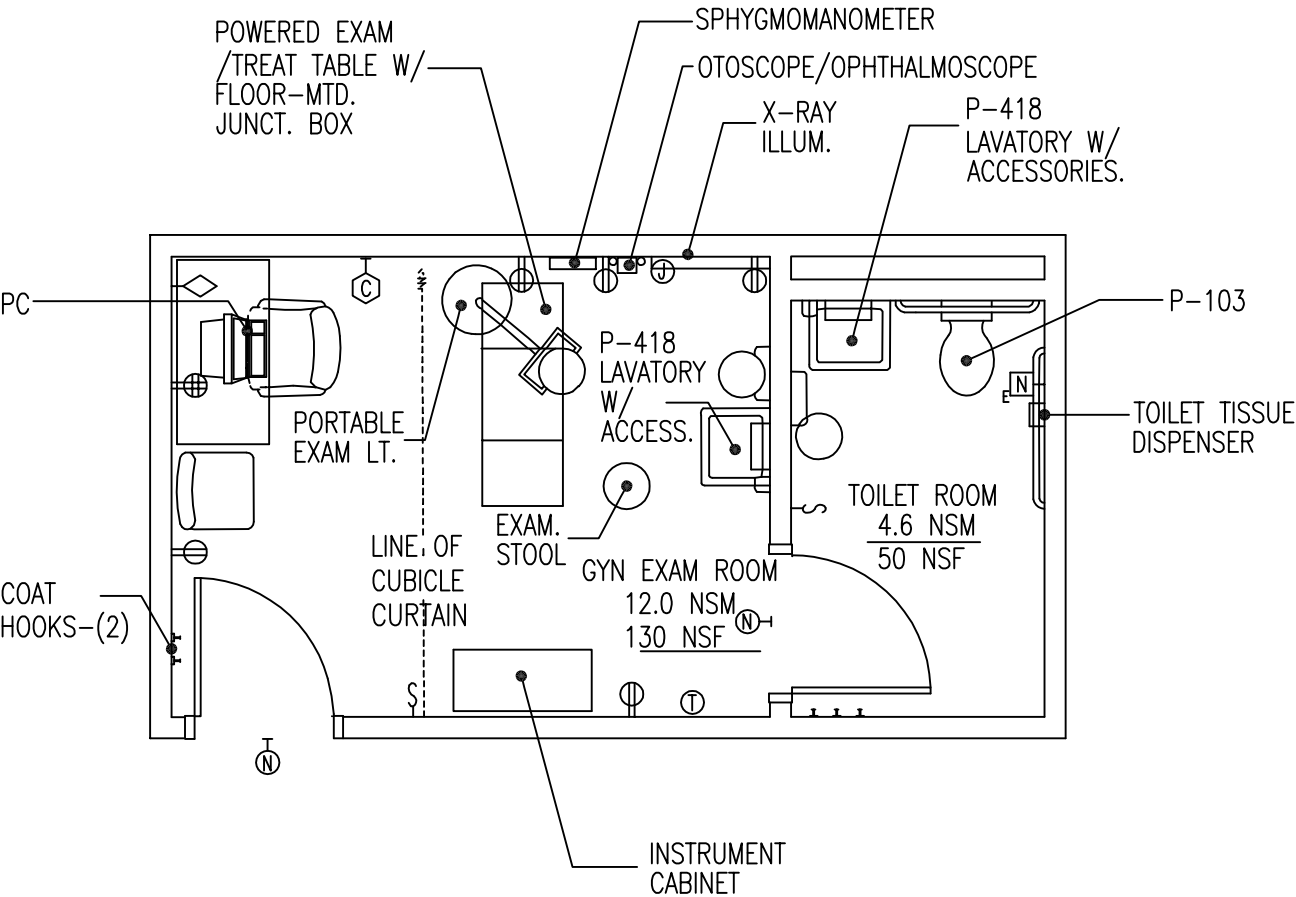
Radiology – Storage, Unexposed Film & Chemicals

Coordinate equipment selections with medical program. Refer to Sections 5 and 6 in the Design Guide for Lease Based Outpatient Clinics for additional guidance. Identify acquisition method(s) for equipment and utilities (Lessor Furnished, VA Furnished, or VA Furnished/Lessor Installed); coordinate with SFO Section 6.3 and Schedule B.

FIXED EQUIPMENT AND UTILITIES		
SYMBOL	QTY	DESCRIPTION
		STORAGE: NOTE: LOCATE CONVENIENT TO COMMON VIEWING ROOM
T9	AR	BINS, FILING, X-RAY FILM, 914 MM x 2286 MM (36" x 90") (PG-18-1, MCS 12301)
	AR	RECEPTACLE, ELECTRICAL, DUPLEX (PG-18-1, MCS 16140)
		UNEXPOSED FILM & CHEMICALS: NOTE: PROVIDE AIR CONDITION REQUIREMENTS AS PER HVAC DESIGN CRITERIA
	AR	RECEPTACLE, ELECTRICAL, DUPLEX (PG-18-1, MCS 16140)

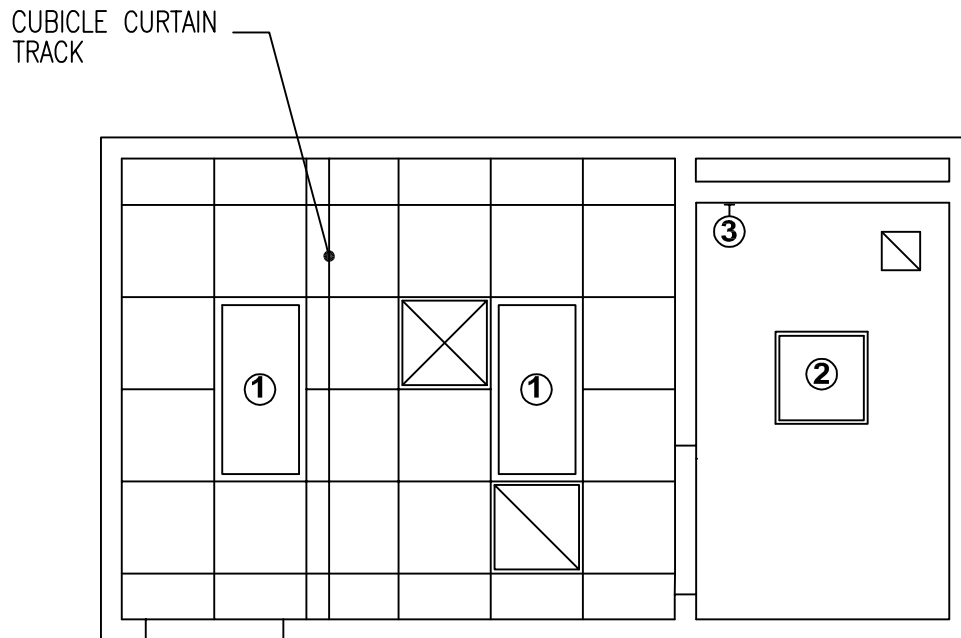
FURNISHINGS AND MOVABLE EQUIPMENT		
SYMBOL	QTY	DESCRIPTION
	AR	PALLETS (SIZE AS REQUIRED)

Women's Health/GYN Exam Room Equipment & Utility Plan



16.7 NSM
180 NSF

Women's Health/GYN Exam Room Reflected Ceiling Plan



LEGEND

- ① 2'x4' FLUORESCENT
- ② 2'x2' FLUORESCENT
- ③ WALL MOUNTED FLUORESCENT

Design Standards

Women's Health/GYN Exam Room

ARCHITECTURAL

Coordinate with SFO; refer to Template SFO Section 7, and Schedule C.

Ceiling:	GWB Lay-in Panels
Ceiling Height:	2740 mm (9'-0")
Wall Finish:	Painted GWB
Wainscot:	CT in Toilet Room
Base:	Resilient Base
	CT in Toilet Room
Floor Finish:	Vinyl Composition Tile
	CT in Toilet Room
Slab Depression:	--
Sound Protection:	STC 40
Notes:	--

LIGHTING

Coordinate with SFO; refer to Template SFO Section 6.7, 6.7.1, 6.7.5.

General:	1. 70-100 FC exam area
	2. 50 FC work area
	3. 30 FC shower/toilet
Special:	--
Notes:	1. 2' X 4' recessed fluorescent fixture with acrylic prismatic lens.
	2. 2' X 2' recessed fluorescent fixture with acrylic prismatic lens.

POWER

Coordinate with SFO; refer to Template SFO Section 6.7, 6.7.1, 6.7.3, 6.7.4 and Schedule B.

General:	Yes
Emergency:	--
Notes:	1. Junction box x-ray illuminator. Connect per equipment manufacturer.
	2. Recessed floor mounted junction box for exam and treatment table. Connection to equipment per manufacturer. Provide dedicated circuit. Verify wattage, voltage, and phase.
	3. Portable exam light.

COMMUNICATION/SPECIAL SYSTEMS

Coordinate with SFO; refer to Template SFO Sections 6.7.8, 6.7.9, and Schedule B.

Data:	Yes
Telephone:	Yes
Intercom:	--
Nurse Call:	Yes
Public Address:	--
Radio/Entertainment:	--
MATV:	--
CCTV:	--
MID:	--
Security/Duress:	--
VTEL:	--
VA Satellite TV:	--
Notes:	--

HEATING, VENTILATING AND AIR CONDITIONING

Coordinate with SFO; refer to Template SFO Section 6.5.

Dry Bulb Temp Cooling:	23°C (75°F)
Dry Bulb Temp Heating:	26°C (78°F)
Minimum % Outside Air:	15%
100% Exhaust Air:	Toilet Room
Noise Criteria:	NC-35
Steam:	--
Relative Humidity/Cooling:	50%
Relative Humidity/Heating:	30%
Minimum Air Changes/Hr.:	6 / 10 toilet
Room Pressure:	0 / negative toilet
AC Load-Equipment:	2 W/SF
AC Load-Lighting:	1.6 W/SF
Number of People:	3
Special Exhaust:	--
Notes:	--

PLUMBING AND MEDICAL GASES

Coordinate with SFO; refer to Template SFO Section 6.6 and Schedule B

Cold Water:	Yes
Hot Water:	Yes
Laboratory Air:	--
Laboratory Vacuum:	--
Sanitary Drain:	Yes
Reagent grade Water:	--
Medical Air:	--
Medical Vacuum:	--
Oxygen:	--
Notes:	--

Equipment Guide List

Women's Health/GYN Exam Room

Coordinate equipment selections with medical program. Refer to Sections 5 and 6 in the Design Guide for Lease Based Outpatient Clinics for additional guidance. Identify acquisition method(s) for equipment and utilities (Lessor Furnished, VA Furnished, or VA Furnished/Lessor Installed); coordinate with SFO Section 6.3 and Schedule B.

FIXED EQUIPMENT AND UTILITIES		
SYMBOL	QTY	DESCRIPTION
P-418	1	LAVATORY, SENSOR CONTROL (PG-18-1, MCS 15450; PG-18-4, 15450-17)
T45	1	SHELF, CORROSION RESISTING STEEL, 305 MM W x 125 MM D (12"W x 5"D) (PG-18-1, MCS 10801; PG-18-4, 10801-1)
	1	TRACK, CURTAIN, CUBICLE, CEILING TYPE, SURFACE MOUNTED (PG-18-1, MCS 10152)
	1	OUTLET, TELEPHONE/DATA, WALL MOUNTED (PG-18-1, MCS 16742)
	1	RECEPTACLE, ELECTRICAL, QUADRAPLEX, FOR COMPUTER EQUIPMENT ITEMS (PG-18-1, MCS 16140)
	AR	RECEPTACLE, ELECTRICAL, DUPLEX (PG-18-1, MCS 16140)
	1	ALARM BUTTON, SECURITY/DURESS, (PG-18-1, MCS 16765)

FURNISHINGS AND MOVABLE EQUIPMENT		
SYMBOL	QTY	DESCRIPTION
	1	CABINET, INSTRUMENT AND TREATMENT, 910 MM W x 405 MM D x 1980 MM H (36"W x 16"D x 78"H)
	1	CHAIR, ROTARY, WITH ARMS
	1	CHAIR, STRAIGHT, WITHOUT ARMS
	1	CLOCK, BATTERY OPERATED
	1	PC, COMPUTER SYSTEM, WITH KEYBOARD
	1	DESK, SINGLE PEDESTAL, 1200 MM W x 760 MM D x 760 MM H (48"W x 30"D x 30"H)
	1	DISPENSER, BIFOLD PAPER TOWEL, SURFACE MOUNTED
	1	DISPENSER, SOAP, LIQUID, WALL MOUNTED
	2	HOOK, COAT, WALL MOUNTED
	AR	ILLUMINATOR, X-RAY FILM, 120 VOLTS, 150 WATTS, WALL MOUNTED, INDIVIDUAL SWITCH FOR TWO, 355 MM x 430 MM (14" x 17") RADIOGRAPHS, 790 MM W x 500 MM H (31"W x 20"H)
	AR	LIGHT, EXAMINING, PORTABLE, 120 VOLTS, 20 AMPS, APPROX., 455 MM DIAMETER x 1905 H (18" DIAMETER x 75"H)
	1	OTOSCOPE / OPHTHALMOSCOPE, WALL HUNG
	1	RECEPTACLE, WASTE, STEP ON TYPE, APPROX., 305 MM (12") DIAMETER
	1	SPHYGMOMANOMETER, WALL HUNG
	1	STOOL, EXAMINING, ADJUSTABLE
	1	TABLE, EXAMINING AND TREATMENT, MOTORIZED
	1	CURTAIN, CUBICLE

Equipment Guide List

Patient Toilet Women's Health/GYN Exam Room

Coordinate equipment selections with medical program. Refer to Sections 5 and 6 in the Design Guide for Lease Based Outpatient Clinics for additional guidance. Identify acquisition method(s) for equipment and utilities (Lessor Furnished, VA Furnished, or VA Furnished/Lessor Installed); coordinate with SFO Section 6.3 and Schedule B.

FIXED EQUIPMENT AND UTILITIES		
SYMBOL	QTY	DESCRIPTION
P-103	1	WATER CLOSET, WALL HUNG (PG-18-1; PG-18-4)
	1	DISPENSER, TOILET TISSUE, DOUBLE ROLL (PG-18-1, MCS 10800; PG-18-4, 10162-1)
P-418	1	LAVATORY, SENSOR CONTROL (PG-18-1, MCS 15450; VOL. 3 SD 380)
T45	1	SHELF, CORROSION RESISTING STEEL, 305 MM x 127 MM (12" x 15") (PG-18-1, MCS 10801; PG-18-4, 10801-1)
	AR	BAR, GRAB FOR WATER CLOSET (PG-18-1, MCS 10800, PG-18-4, 10162-1)
	2	HOOK, CLOTHES (PG-18-1, MCS 10800)
	1	MIRROR, WHEELCHAIR, 600 MM W x 910 MM H (42"W x 36"H) (PG-18-1, MCS 10800, PG-18-4, 10800-7)
	1	NURSE CALL, CODE 1 (BLUE), EMERGENCY STATION, WITH CORRIDOR SIGNAL LIGHT, (PG-18-1, MCS 16761)

FURNISHINGS AND MOVABLE EQUIPMENT		
SYMBOL	QTY	DESCRIPTION
	1	DISPENSER, SOAP, LIQUID, WALL MOUNTED
	1	DISPENSER, BIFOLD PAPER TOWEL, SURFACE MOUNTED
	AR	DISPENSER, SANITARY NAPKIN
	AR	DISPOSAL, SANITARY NAPKIN
	1	RECEPTACLE, WASTE, STEP-ON TYPE, APPROX. 305 MM (12") DIAMETER