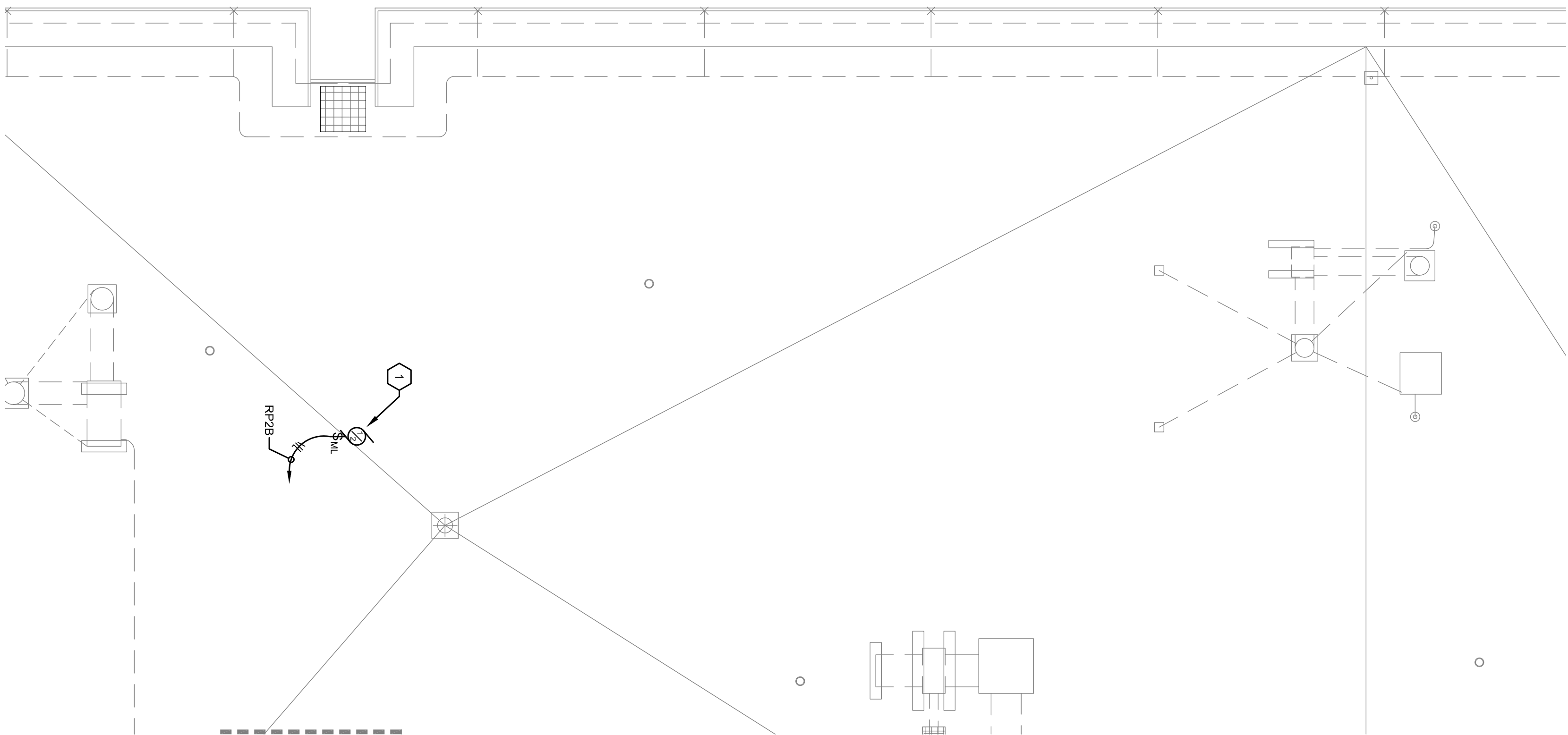


SECOND FLOOR ELECTRICAL PLAN

1

SCALE: 1/8" = 1'-0"

0 4 8 16 32



THIRD FLOOR ELECTRICAL PLAN

2

SCALE: 1/4" = 1'-0"

0 2 4 8 16

MECHANICAL EQUIPMENT GENERAL NOTES:

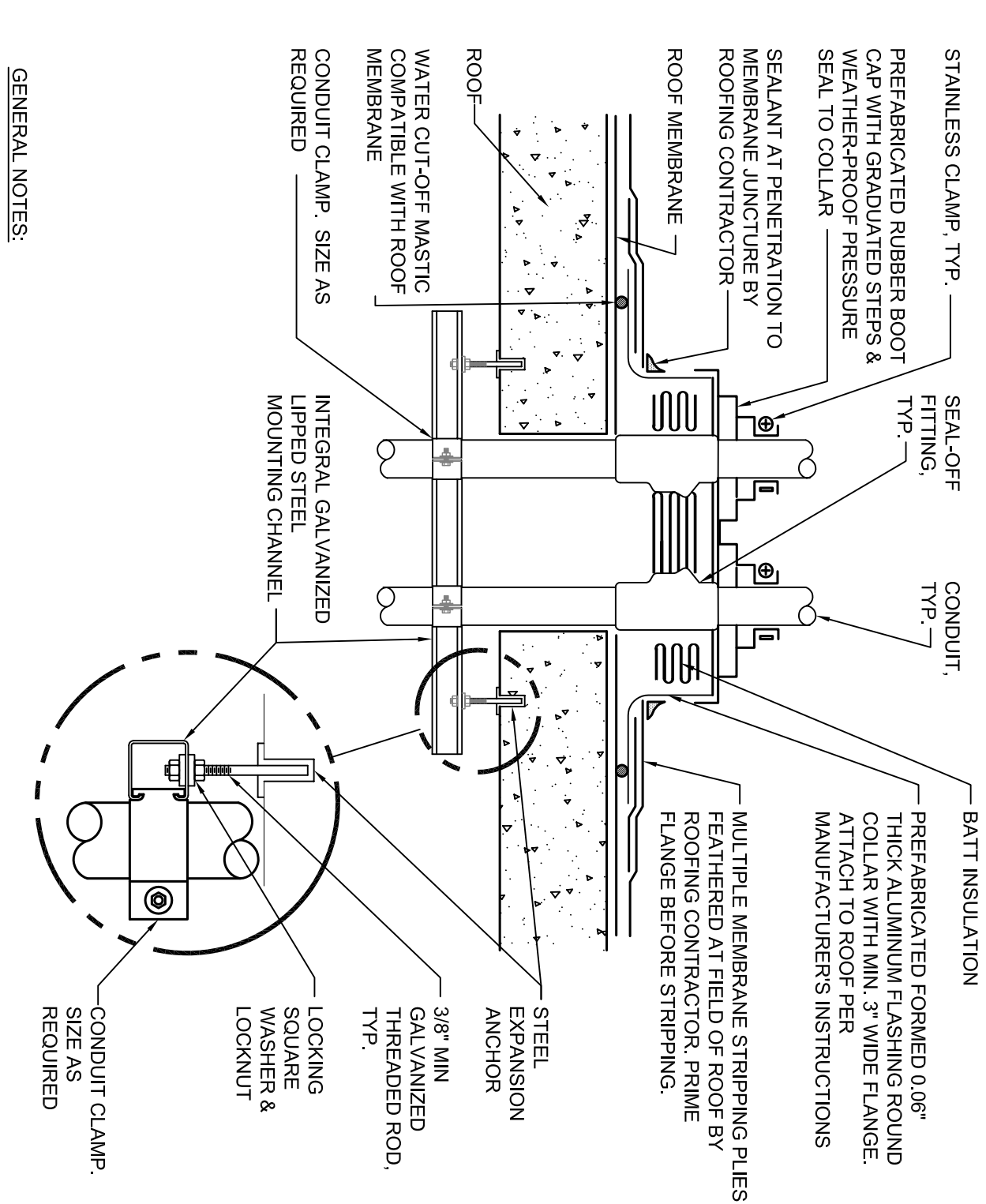
- M1. MECHANICAL EQUIPMENT SHALL BE CONNECTED COMPLETE PER MANUFACTURERS WIRING DIAGRAMS AND DETAILS UNLESS OTHERWISE NOTED ON DRAWINGS.
- M2. CONTRACTOR SHALL CONCEAL CONDUIT AND WIRING IN WALLS AND ABOVE CEILING AND PROVIDE LIQUID-TIGHT FLEXIBLE METAL CONDUIT FOR FINAL CONNECTION TO MECHANICAL EQUIPMENT. UNLESS OTHERWISE NOTED, ALL MECHANICAL EQUIPMENT SHALL BE INSTALLED WITH ROOF PENETRATION WATER-TIGHT AND ALL WALL PENETRATIONS TO MAINTAIN FIRE RATING.
- M3. CONTRACTOR SHALL REQUIRE ALL LOCAL USE CONNECTING LEADS PER ALL MECHANICAL EQUIPMENT. UNLESS EQUIPMENT IS NOTED TO BE FURNISHED WITH INTERLOCKED DISCONNECTS, LABEL ALL DISCONNECT SWITCHES TO INDICATE POWER SOURCE AND EQUIPMENT SERVED.
- M4. COORDINATE EXACT INSTALLATION LOCATION OF ALL MECHANICAL EQUIPMENT WITH MECHANICAL PLANS PRIOR TO ROUGH-IN.
- M5. CONDUITS SHALL BE RIGID ALUMINUM AT EXTERIOR LOCATIONS.
- M6. SHARED NEUTRALS ARE NOT PERMITTED FOR BRANCH CIRCUITS.

CODED NOTES:

- 1 EXHAUST FAN - 120V/10/12HP. PROVIDE LOCKABLE MANUAL SWITCH AND CONNECT COMPLETE TO CIRCUIT INDICATED VIA WVC - 2#12 & #12EG. PROVIDE ROOF CURB FOR CONDUIT.
- 2 CONNECT EXHAUST FAN COMPLETE TO SPACE 204-120V-10 BREAKER IN EXISTING PANELBOARD.
- 3 APPROXIMATE LOCATION OF THIRD FLOOR EXHAUST FAN.

MOTOR AND MOTOR CONTROLLERS (FLOOR PLAN VIEW)

1. 120V/10 OR 277V/10 (AS REQUIRED) LOCKABLE MANUAL SWITCH (NO THERMAL OVERLOADS).
2. MOTOR - NUMBER DENOTES HORSEPOWER



- GENERAL NOTES:
1. MAINTAIN A MINIMUM CLEARANCE OF 12\"/>
  2. FLANGES OF ADJACENT FLASHINGS SHALL NOT BE CUT OR OVERLAPPED.
  3. VERIFY ROOF & STRUCTURAL SYSTEM WITH OWNER.
  4. COORDINATE FLASHING INSTALLATION WITH ROOFING CONTRACTOR TO ENSURE PROPER MEMBRANE & WATERWAYS ARE USED TO MAINTAIN ROOF INTEGRITY.

ROOF PENETRATION DETAIL

NOT TO SCALE

3

CONSTRUCTION SUBMITTAL - TO VA

08/28/2014

CONSULTANTS:



FREDRICK, FREDRICK & HELLER  
ENGINEERS, INC.  
572 EAST HOPALONG ROAD  
SPRINGFIELD, NJ 07081-4477  
TEL (609) 546-8866  
FAX (609) 546-8869

ARCHITECTS/ENGINEERS:

Drawing Title  
PARTIAL SECOND AND THIRD  
FLOOR ELECTRICAL PLANS

Approved: Project Director

Project Title  
NECROPSY TABLE  
EXHAUST

Building Number  
1

Drawing Number  
E1

Office of  
Facilities  
Management

Department of  
Veterans Affairs