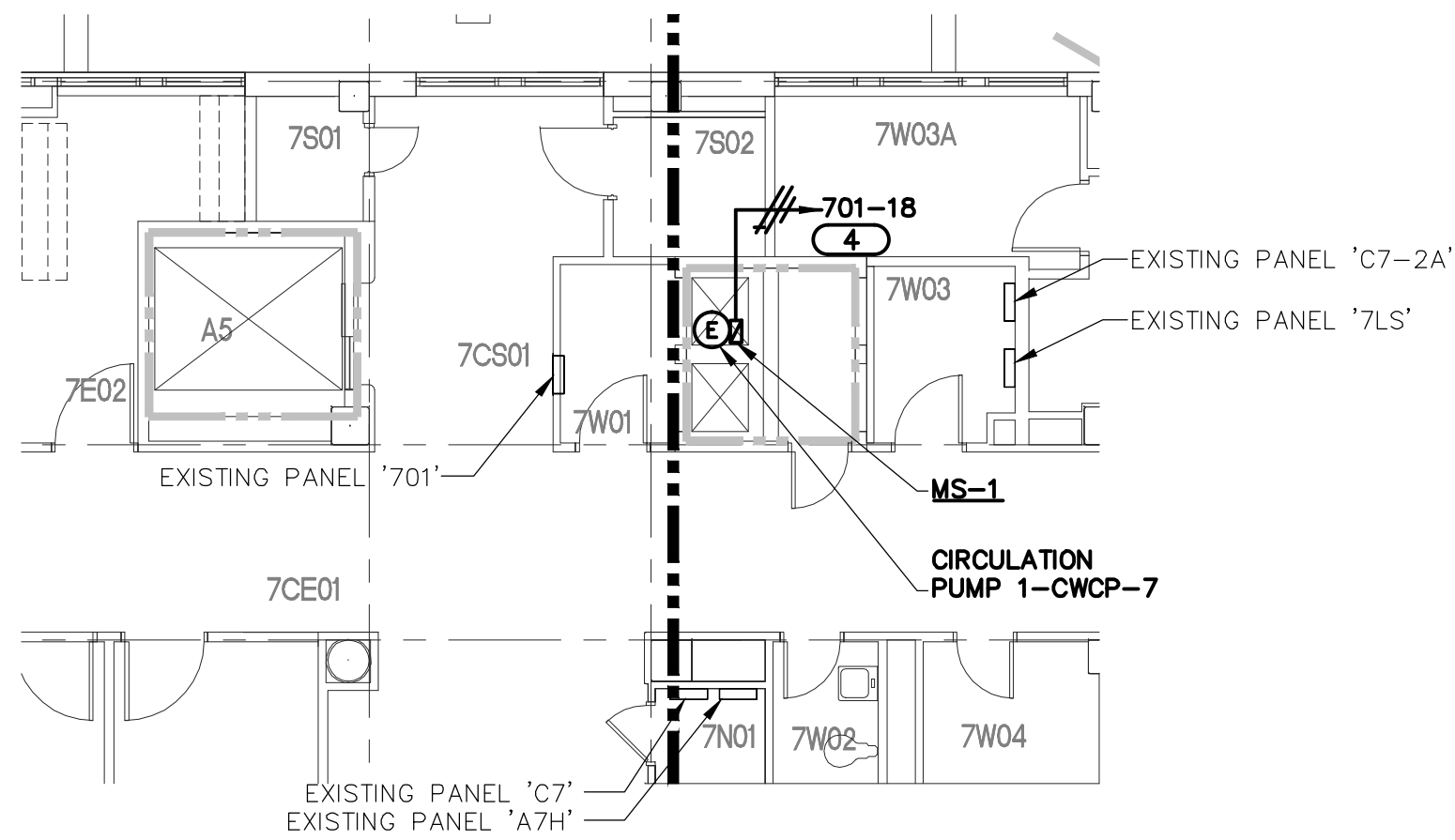


--	--

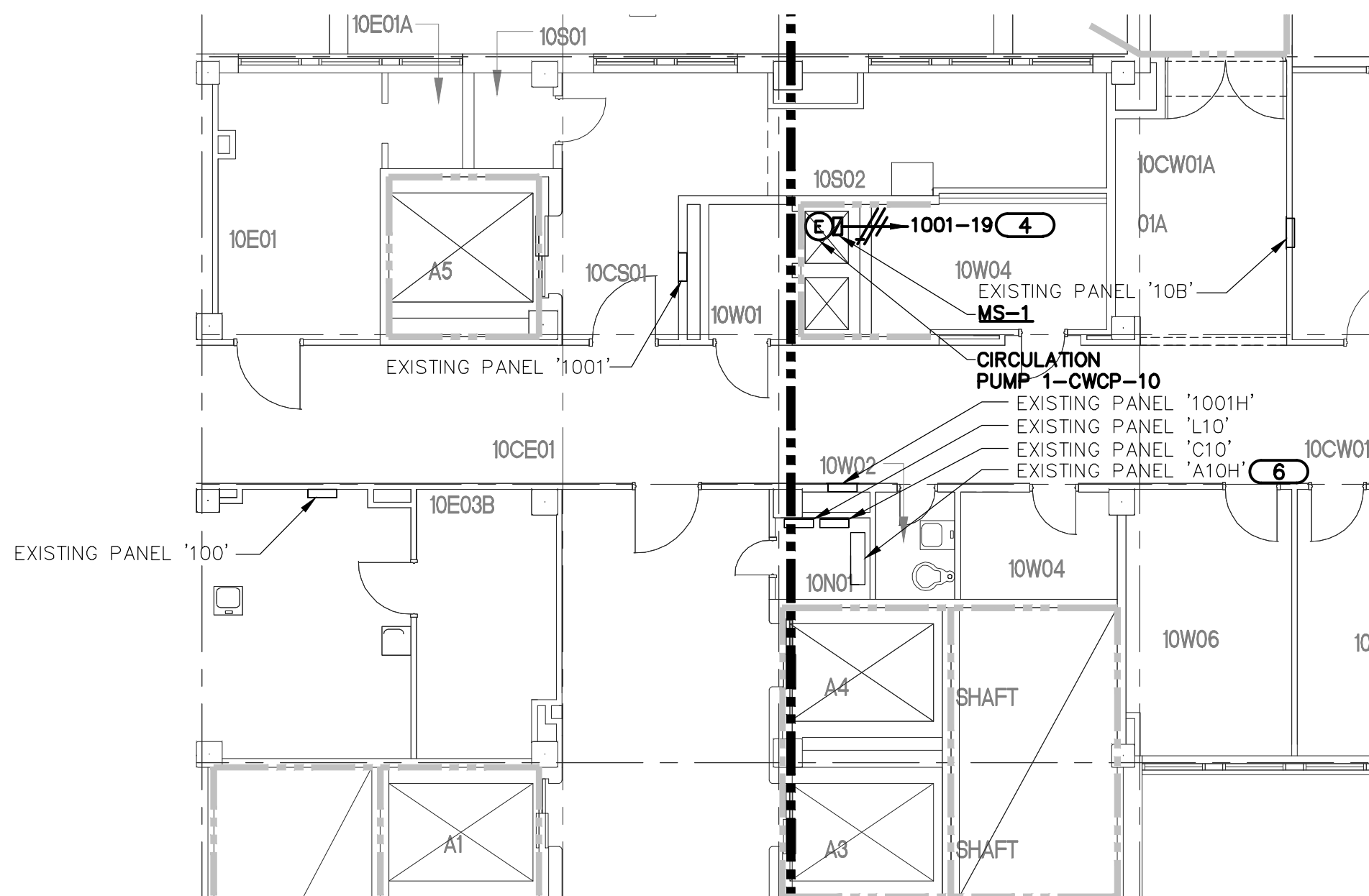
three inches = one foot
one and one half inches = one foot
one inch = one foot
three quarters inch = one foot
one half inch = one foot
three eighths inch = one foot
one quarter inch = one foot
one eighth inch = one foot
one eighth inch = one foot

02:45:23 PM
2-03-15
02:45:23 PM
thompsonjp

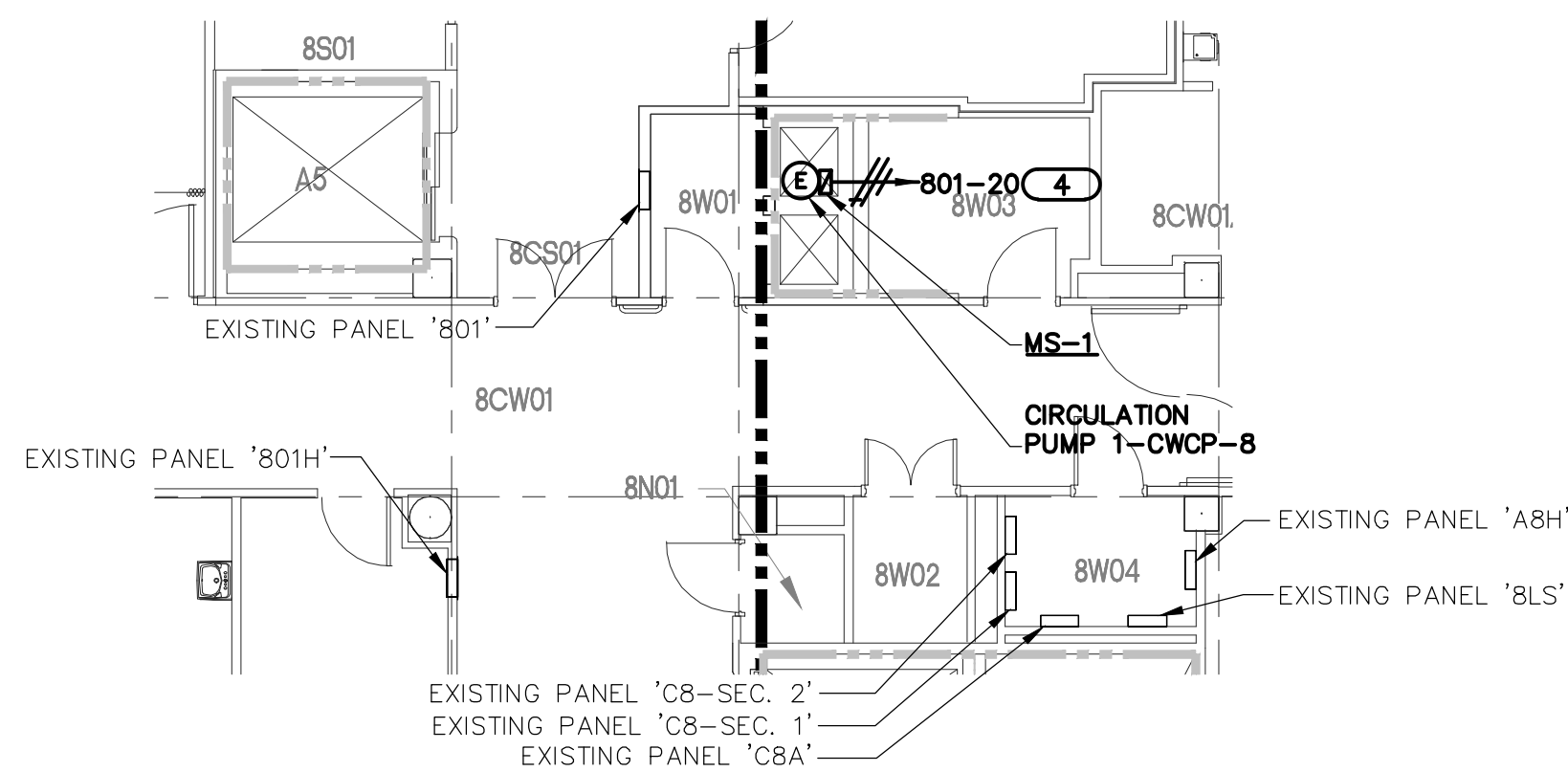
VA FORM 08-6231



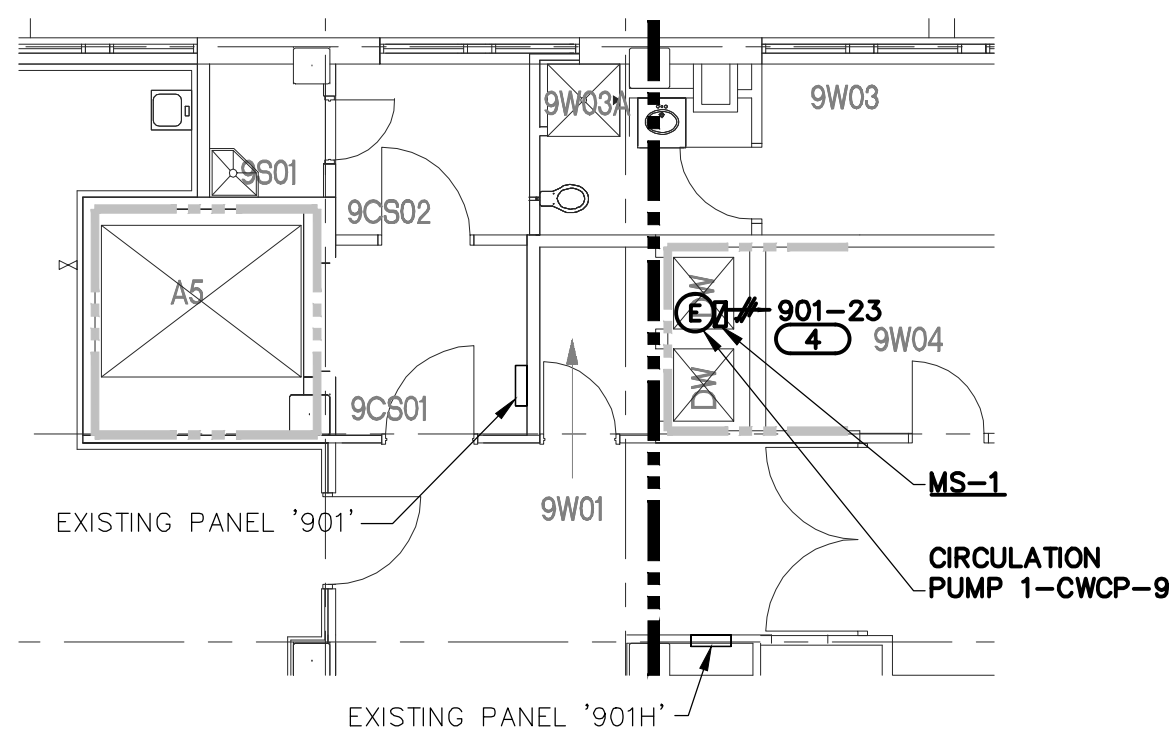
1 PARTIAL 7TH FLOOR PLAN - ELECTRICAL
SCALE: 1/8"=1'-0"



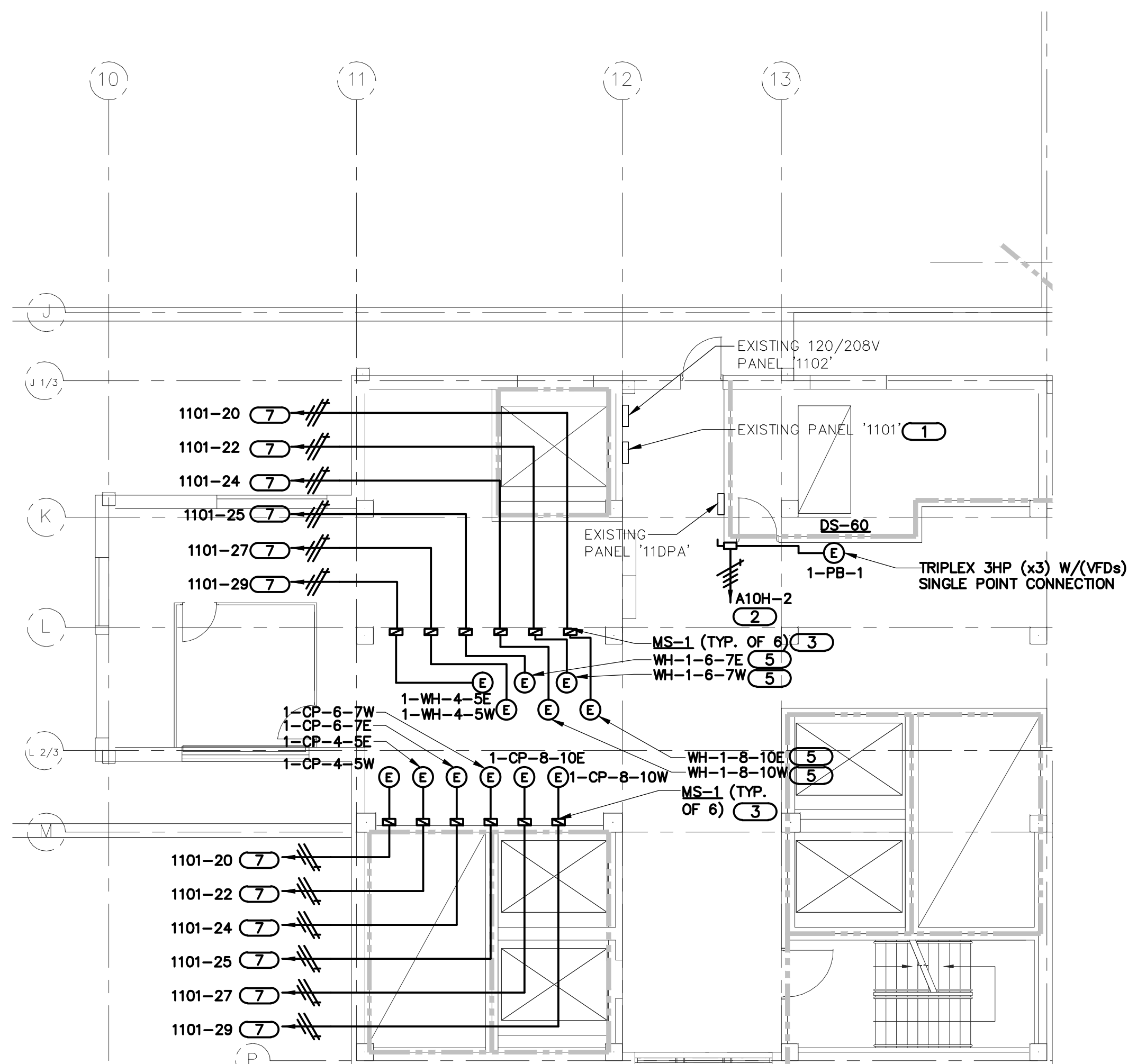
4 PARTIAL 10TH FLOOR PLAN - ELECTRICAL
SCALE: 1/8"=1'-0"



2 PARTIAL 8TH FLOOR PLAN - ELECTRICAL
SCALE: 1/8"=1'-0"

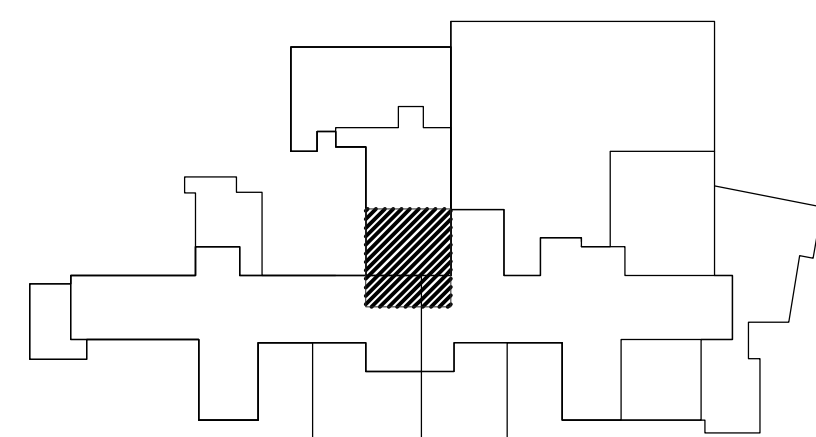


3 PARTIAL 9TH FLOOR PLAN - ELECTRICAL
SCALE: 1/8"=1'-0"



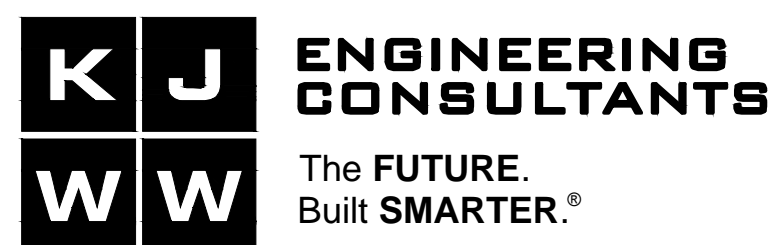
5 PARTIAL 11TH FLOOR PLAN - ELECTRICAL
SCALE: 1/8"=1'-0"

- KEYNOTES**
1. REMOVE EXISTING 3-POLE CIRCUIT BREAKERS AT CIRCUIT POSITIONS 20, AND 25. HAND CIRCUIT BREAKERS OVER TO OWNER. PROVIDE (6) 20A/1P CIRCUIT BREAKERS IN EXISTING PANEL BUSSED SPACE. NEW CIRCUIT BREAKERS SHALL MATCH EXISTING PANEL RATINGS AND CONFIGURATION. UPDATE PANEL SCHEDULE TO REFLECT NEW LOADS BEING SERVED. EXISTING PANEL IS WESTINGHOUSE HWFB SERIES.
 2. PROVIDE FINAL CONNECTION TO TRIPLEX PUMP PACKAGE. HOMERUN TO NEW 50A/3P CIRCUIT BREAKER IN PANEL "A10H" LOCATED ON 10TH FLOOR WITH 3/8" 1# GRD IN 3/4" C. SEE 4/1-E5 FOR PANEL LOCATION.
 3. INSTALL MS-1 ADJACENT TO UNIT. PROVIDE FINAL CONNECTION TO PUMP WITH 3/4" LFMC.
 4. HOMERUN TO SPARE 20A/1P CIRCUIT BREAKER WITH 2#12, 1#12GND. IN 3/4" C.
 5. PROVIDE CONNECTION TO SOLENOID VALVE ASSOCIATED WITH STEAM WATER HEATER.
 6. PROVIDE 50A/3P CIRCUIT BREAKER IN EXISTING BUSSED SPACE. MATCH PANEL RATINGS AND CONFIGURATION. EXISTING PANEL IS GE SPECTRA SERIES.



Key Plan
Scale: 1/8"=1'-0"

CONSULTANTS:



623 26TH AVENUE
QUAD CITIES, IL 61201
309.788.0673 FAX: 309.786.5967
www.kjww.com

STRUCTURAL | MECHANICAL | ELECTRICAL | TECHNOLOGY | MEDICAL EQUIPMENT SOLUTIONS

ARCHITECT/ENGINEERS:



Calvin L. Hinz Architects, P.C.
3700 North 500th Street
Omaha, Nebraska 68122
Phone: 402.891.0941
Fax: 402.291.0100

**NOT FOR
CONSTRUCTION**

NAME	DATE
DIRECTOR	
ASSOCIATE DIRECTOR	
ASSOCIATE DIRECTOR FOR PATIENT CARE	
CHIEF OF STAFF	
CHIEF ENGINEER	

Drawing Title	PARTIAL 7TH - 11TH FLOOR PLANS - ELECTRICAL
Approved Project Director	-
VAPAHCS PLANNING AND ENGINEERING	

Project Title	Reconfigure Domestic Water Distribution System for Legionella Prevention
Location	601 Highway 6W Iowa City, Iowa 52246
Date	2 FEBRUARY 2015
Checked	WCR
Drawn	JPT

Project Number	636A8-14-001
Building Number	1
Drawing Number	1-E5
Dwg. 152 of 152	

Office of
Construction
and Facilities
Management

