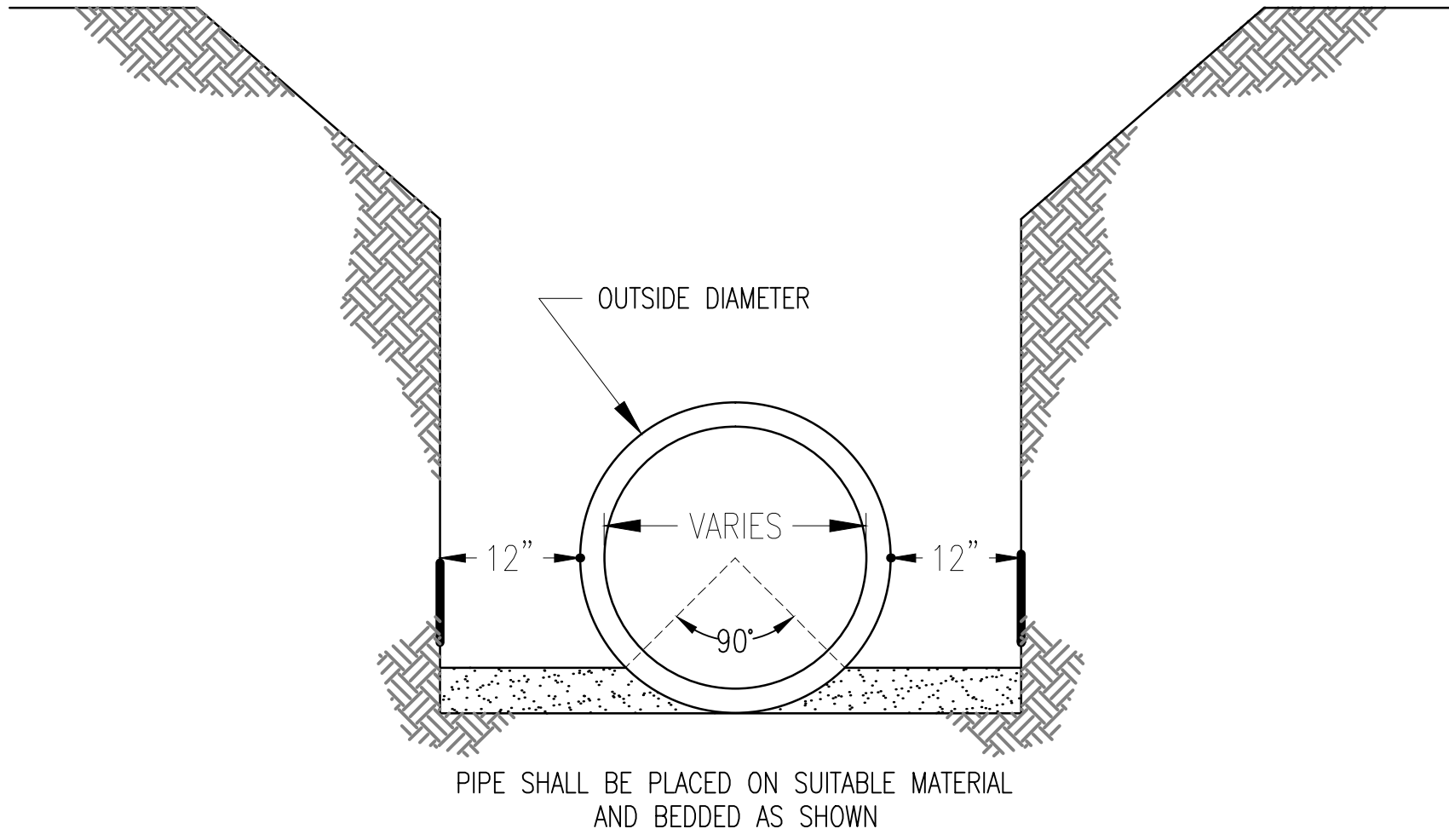
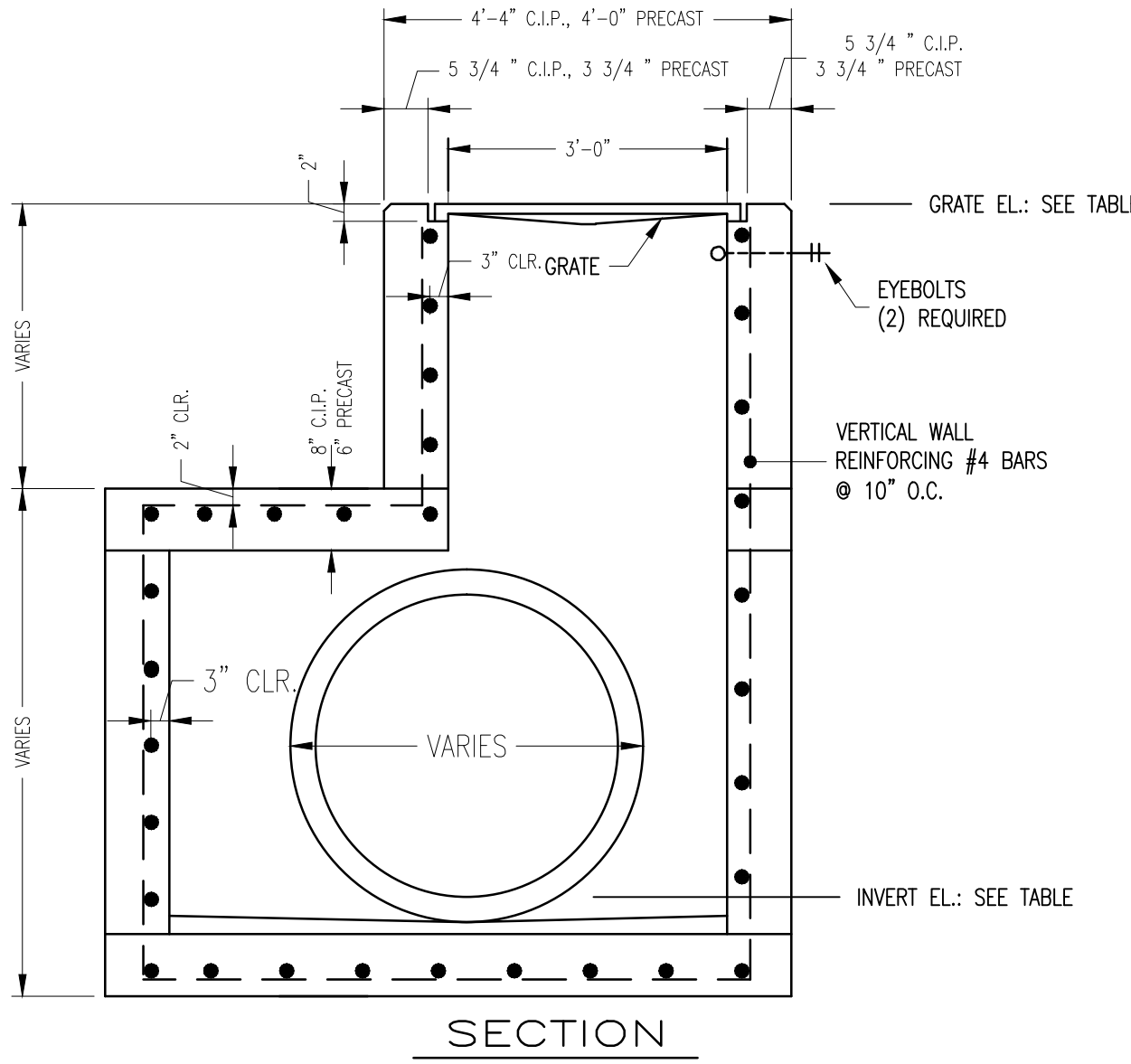
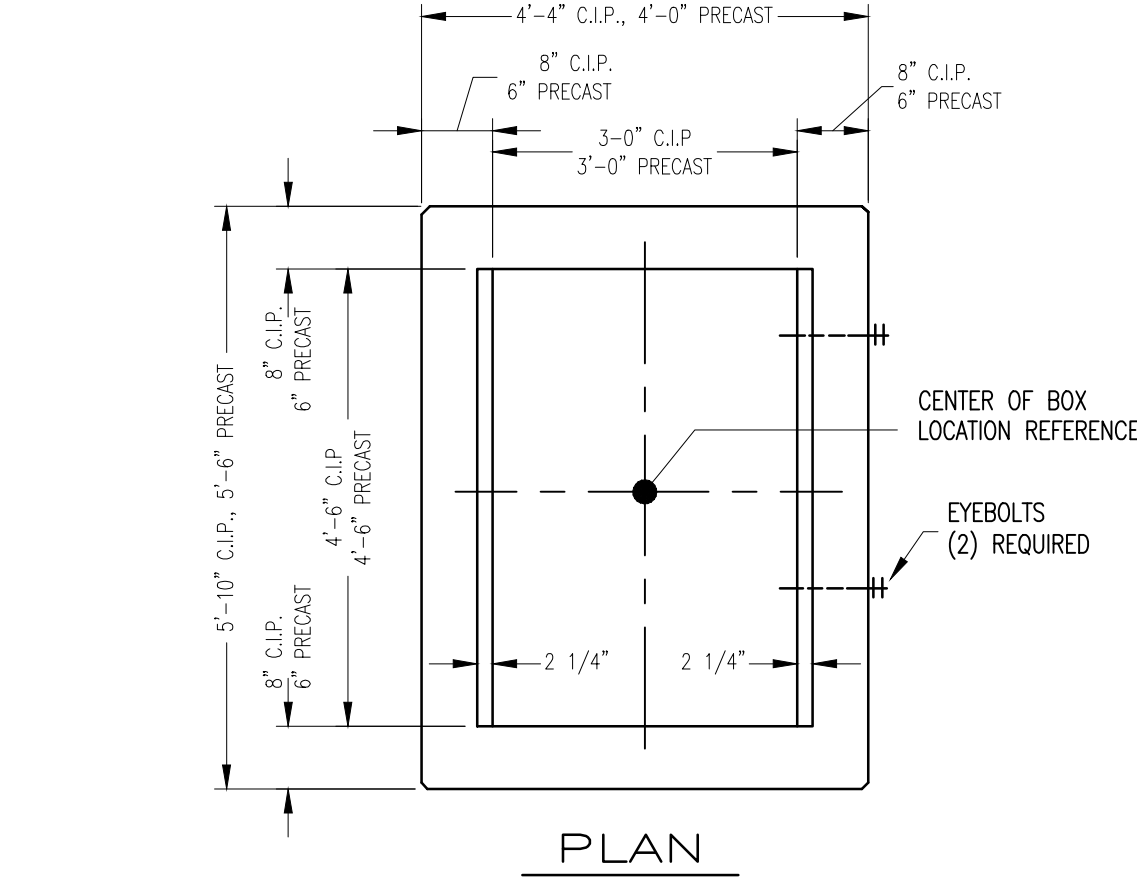


0
1
2
3
4
5
6
7
8
9
10
11
12
13
14
15
16
17
18
19
20
21
22
23
24
25
26
27
28
29
30
31
32
33
34
35
36
37
38
39
40
41
42
43
44
45
46
47
48
49
50
51
52
53
54
55
56
57
58
59
60
61
62
63
64
65
66
67
68
69
70
71
72
73
74
75
76
77
78
79
80
81
82
83
84
85
86
87
88
89
90
91
92
93
94
95
96
97
98
99
100
101
102
103
104
105
106
107
108
109
110
111
112
113
114
115
116
117
118
119
120
121
122
123
124
125
126
127
128
129
130
131
132
133
134
135
136
137
138
139
140
141
142
143
144
145
146
147
148
149
150
151
152
153
154
155
156
157
158
159
160
161
162
163
164
165
166
167
168
169
170
171
172
173
174
175
176
177
178
179
180
181
182
183
184
185
186
187
188
189
190
191
192
193
194
195
196
197
198
199
200
201
202
203
204
205
206
207
208
209
210
211
212
213
214
215
216
217
218
219
220
221
222
223
224
225
226
227
228
229
230
231
232
233
234
235
236
237
238
239
240
241
242
243
244
245
246
247
248
249
250
251
252
253
254
255
256
257
258
259
260
261
262
263
264
265
266
267
268
269
270
271
272
273
274
275
276
277
278
279
280
281
282
283
284
285
286
287
288
289
290
291
292
293
294
295
296
297
298
299
300
301
302
303
304
305
306
307
308
309
310
311
312
313
314
315
316
317
318
319
320
321
322
323
324
325
326
327
328
329
330
331
332
333
334
335
336
337
338
339
340
341
342
343
344
345
346
347
348
349
350
351
352
353
354
355
356
357
358
359
360
361
362
363
364
365
366
367
368
369
370
371
372
373
374
375
376
377
378
379
380
381
382
383
384
385
386
387
388
389
390
391
392
393
394
395
396
397
398
399
400
401
402
403
404
405
406
407
408
409
410
411
412
413
414
415
416
417
418
419
420
421
422
423
424
425
426
427
428
429
430
431
432
433
434
435
436
437
438
439
440
441
442
443
444
445
446
447
448
449
450
451
452
453
454
455
456
457
458
459
460
461
462
463
464
465
466
467
468
469
470
471
472
473
474
475
476
477
478
479
480
481
482
483
484
485
486
487
488
489
490
491
492
493
494
495
496
497
498
499
500
501
502
503
504
505
506
507
508
509
510
511
512
513
514
515
516
517
518
519
520
521
522
523
524
525
526
527
528
529
530
531
532
533
534
535
536
537
538
539
540
541
542
543
544
545
546
547
548
549
550
551
552
553
554
555
556
557
558
559
560
561
562
563
564
565
566
567
568
569
570
571
572
573
574
575
576
577
578
579
580
581
582
583
584
585
586
587
588
589
590
591
592
593
594
595
596
597
598
599
600
601
602
603
604
605
606
607
608
609
610
611
612
613
614
615
616
617
618
619
620
621
622
623
624
625
626
627
628
629
630
631
632
633
634
635
636
637
638
639
640
641
642
643
644
645
646
647
648
649
650
651
652
653
654
655
656
657
658
659
660
661
662
663
664
665
666
667
668
669
670
671
672
673
674
675
676
677
678
679
680
681
682
683
684
685
686
687
688
689
690
691
692
693
694
695
696
697
698
699
700
701
702
703
704
705
706
707
708
709
710
711
712
713
714
715
716
717
718
719
720
721
722
723
724
725
726
727
728
729
730
731
732
733
734
735
736
737
738
739
740
741
742
743
744
745
746
747
748
749
750
751
752
753
754
755
756
757
758
759
760
761
762
763
764
765
766
767
768
769
770
771
772
773
774
775
776
777
778
779
780
781
782
783
784
785
786
787
788
789
790
791
792
793
794
795
796
797
798
799
800
801
802
803
804
805
806
807
808
809
810
811
812
813
814
815
816
817
818
819
820
821
822
823
824
825
826
827
828
829
830
831
832
833
834
835
836
837
838
839
840
841
842
843
844
845
846
847
848
849
850
851
852
853
854
855
856
857
858
859
860
861
862
863
864
865
866
867
868
869
870
871
872
873
874
875
876
877
878
879
880
881
882
883
884
885
886
887
888
889
890
891
892
893
894
895
896
897
898
899
900
901
902
903
904
905
906
907
908
909
910
911
912
913
914
915
916
917
918
919
920
921
922
923
924
925
926
927
928
929
930
931
932
933
934
935
936
937
938
939
940
941
942
943
944
945
946
947
948
949
950
951
952
953
954
955
956
957
958
959
960
961
962
963
964
965
966
967
968
969
970
971
972
973
974
975
976
977
978
979
980
981
982
983
984
985
986
987
988
989
990
991
992
993
994
995
996
997
998
999
1000

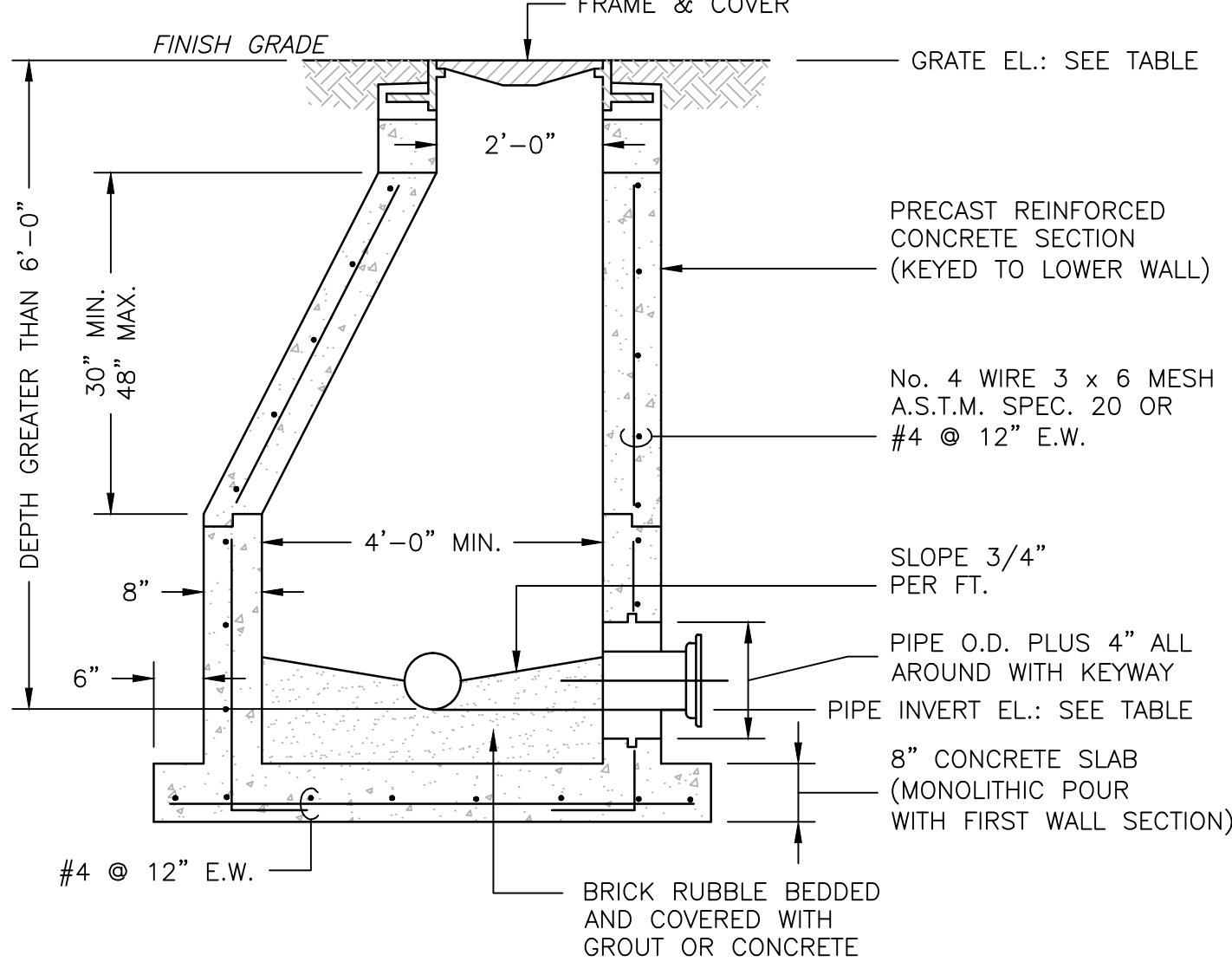
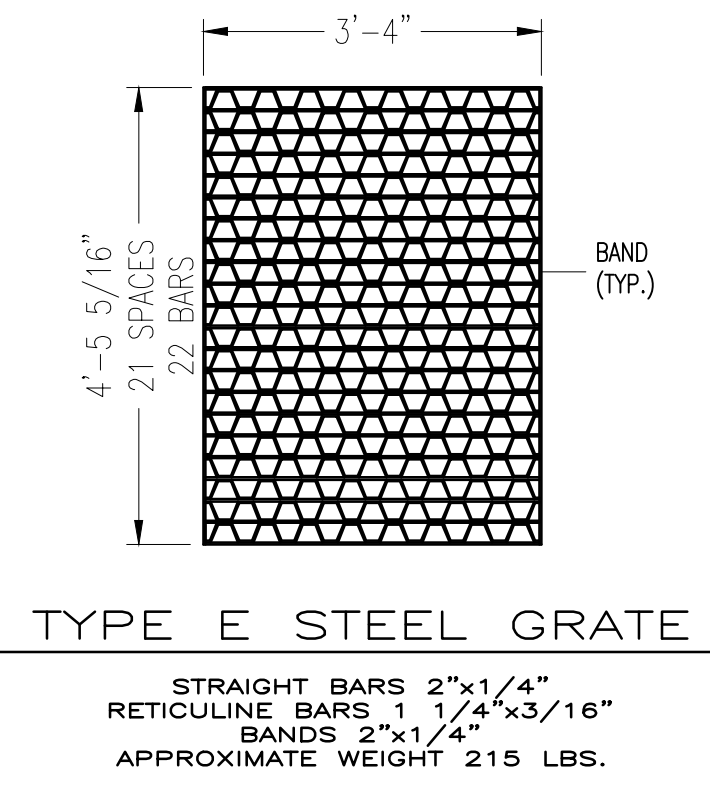


- NOTES:
1. A MINIMUM OF 12" FROM OUTSIDE DIAMETER OF PIPE TO SIDE OF TRENCH MUST BE ALLOWED FOR COMPACTION OF FILL MATERIAL. BACKFILLING OF TRENCHES SHALL BE ACCOMPLISHED IMMEDIATELY AFTER THE PIPE IS LAID. THE FILL AROUND THE PIPE SHALL BE PLACED IN LAYERS NOT TO EXCEED 6". UNDER NO CIRCUMSTANCES SHALL WATER BE PERMITTED TO RISE IN UNBACKFILLED TRENCHES AFTER THE PIPE HAS BEEN PLACED. COMPACTION REQUIREMENTS SHALL BE ATTAINED BY THE USE OF MECHANICAL TAMPS ONLY. EACH AND EVERY LAYER OF BACKFILL SHALL BE PLACED LOOSE AND THOROUGHLY COMPACTED INTO PLACE.
 2. ALL BACKFILL MATERIAL SHALL HAVE AN IN PLACE COMPACTED DENSITY OF 95% MODIFIED PROCTOR. THE FINAL 2' BELOW FINISHED GRADE SHALL BE 100%.
 3. ALL TRENCHING OPERATIONS SHALL MEET OSHA STANDARDS.

STORMWATER PIPE
TRENCH DETAIL
SCALE: N.T.S.



TYPE E INLET
J BOTTOM DETAIL
SCALE: N.T.S.



- NOTES:
1. PRECAST CONCRETE TYPE II, 4000 P.S.I.
 2. RAMNEK OR EQUAL AT ALL RISER JOINTS (1/2" THICK WITH WIDTH AT LEAST 1/2 THE WALL THICKNESS) WITH GROUT ON INSIDE AND OUTSIDE.
 3. ALL OPENINGS SHALL BE SEALED WITH A WATERPROOF NON-SHRINKING GROUT.
 4. FLOW CHANNELS SHALL BE CONSTRUCTED TO DIRECT INFLUENT INTO FLOW STREAM.
 5. LIFT HOLES ARE PERMITTED.
 6. ALL PIPE HOLES SHALL BE PRECAST OR CORE-DRILLED.
 7. A.C. COLLAR OR APPROVED RUBBER BOOT MUST BE USED WITH P.V.C. PIPE.
 8. INSIDE AND OUT: FIRST COAT RED AND SECOND COAT BLACK. SECOND COAT M.H. TO RECEIVE 2 COATS OF KOPPERS BITUMASTIC OR APPROVED EQUAL ON INSIDE TO BE APPLIED AFTER ALL GROUTING, SEALING AND OTHER WORK IS COMPLETED.

TYPICAL MANHOLE DETAIL
SCALE: N.T.S.

STORM WATER STRUCTURE INVERT SUMMARY TABLE					
ID	DESCRIPTION	GRATE ELEV.	INVERT #1	INVERT #2	INVERT OUT
PIPE ROUTE NO. 1					
AD18	EXISTING	1663.63	1659.38 (S) (12")	1652.60 (N) (36")	1652.58 (S) (36")
CB-A	NEW GRATE INLET	1663.75	1652.27 (N) (36")	----	1652.27 (SW) (42")
MH-A	NEW MANHOLE	1666.20	1605.08 (NE) (42")	1662.20 (W) (12")	1652.08 (S) (42")
MH-B	NEW MANHOLE	1665.00	1651.17 (N) (42")	----	1651.17 (E) (42")
CB-B	NEW GRATE INLET	1663.25	1650.94 (W) (42")	----	1650.94 (S) (36")
MH-4	EXISTING	1662.45	1650.55 (N) (36")	1650.55 (NE) (24")	1650.55 (S) (24")
CB-C	NEW GRATE INLET	1671.25	----	----	1663.80 (E) (12")
CB-D	NEW GRATE INLET	1659.25	----	----	1652.00 (SW) (24")
CB-E	NEW GRATE INLET	1660.75	1651.29 (NE) (24")	----	1651.29 (SW) (24")
PIPE ROUTE NO. 2					
CI16	EXISTING	1672.80	1667.62 (NW)		1667.58 (SE)
CB-F	NEW AREA DRAIN	1672.50	1665.60 (NW)		1665.60 (S)
CB-G	NEW AREA DRAIN	1665.50	1661.35 (N)		1661.35 (E)
CB-H	NEW AREA DRAIN	1668.50	1660.47 (W)		1660.47 (E)
MH-C**	NEW MANHOLE	1667.75	1659.93 (W)		1659.93 (W)
MH-5	EXISTING	1660.93	1652.93 (NW)	1652.73 (N)	1652.68 (SE)
**STRUCTURE MH-C MUST BE FIELD MEASURED TO TIE IN 12" RCP FROM STRUCTURE CI15					

FINAL CONSTRUCTION DRAWINGS
APPROVED FOR CONSTRUCTION

Dwg. File	ARCHITECT/ENGINEERS:	MICHAEL D. TOOTLE, PE Florida Reg. 67818	CONSULTANTS:	Approved:	Drawing Title	Project Title	Date
REVISION PER VA REQUEST 2/12/14	AKEA INC. 3603 NW 98TH ST., SUITE B GAINESVILLE, FLORIDA 32606 PH: (352) 474-6124 FAX: (352) 474-6324 CERT OF AUTH: FL #26693 EXPIRES: 02/28/2017		WALKER PARKING CONSULTANTS 4904 Eisenhower Blvd Suite 150 Tampa, FL 33634 813.888.5800 Ph 813.888.5822 Fax BE-0003840 www.walkerparking.com	Asst. Chief, Engineering Service Engineering Bldg. Maint. Foreman Engineering Operation Foreman Engineering Health & Safety Engineering Planning & Analysis C.O.T.R.	STORM WATER DETAILS	CONSTRUCT 525 SPACE PARKING GARAGE CONTRACT No. VA249-14-C-0150 P.O. No. 621C40254	MARCH 26, 2015
			FRANK DAUCHTRY architect 200 E. Government Street Suite 240-A Pensacola, FL 32502 Voice 850-433-3023 Fax 850-433-3025 Email frank@frankda.com			Building Number 160	Project No. 621-330
						Checked SSH	DRAWING NO. C230
						Drawn MDT	Page 20 of 131
						Location VAMC MOUNTAIN HOME, TENNESSEE	
Revisions	Date						

PROJECT SITE
BENCHMARK

738,429.8567 N
3,037,100.7458 E

VERTICAL DATUM:
NAVD88

PROJECT BENCHMARK
DISK IN CONCRETE BASE
OF LIGHT POLE
ELEVATION: 1677.53

NAL HOME FOR DISABLED SO
MAP 54B, GROUP B, PARCEL

NEW CURB & GUTTER
370 FT ALONG BRADFORD
PEAR LANE (SEE DETAIL)

NEW SIDEWALK
6-FT WIDE ADJACENT TO
BRADFORD PEAR LANE

NEW SIDEWALK 175 FEET
NORTH-SOUTH RUNNING
5-FT WIDE TO MATCH EXISTING
2-FEET OFFSET FROM EDGE
OF GARAGE

RESTORE ALL DEMO'D OR
DAMAGED SIDEWALK,
DRIVEWAY, CURB & GUTTER
APPROX 1,650 SF NORTH SIDE

RESTORE FOUR GRADE BEAM
CROSSINGS - ASPHALT PAVEMENT
100 SF EACH (TYP)

NEW SIDEWALK
CONNECT TO
EXISTING (717 SF)

RESTORE ALL DEMO'D OR
DAMAGED SIDEWALK,
DRIVEWAY, CURB & GUTTER
APPROX 1,650 SF NORTH SIDE.
RESTORE ALL DRIVEWAY RADIUS
TO ORIGINAL DIMENSIONS

LAYDOWN AREA:
REPAIR DAMAGE TO
CURBS AND GUTTER.
RESURFACE ASPHALT
PARKING LOT (7,000 SF)

NEW CONCRETE
SIDEWALK

PROTECT
LIGHT

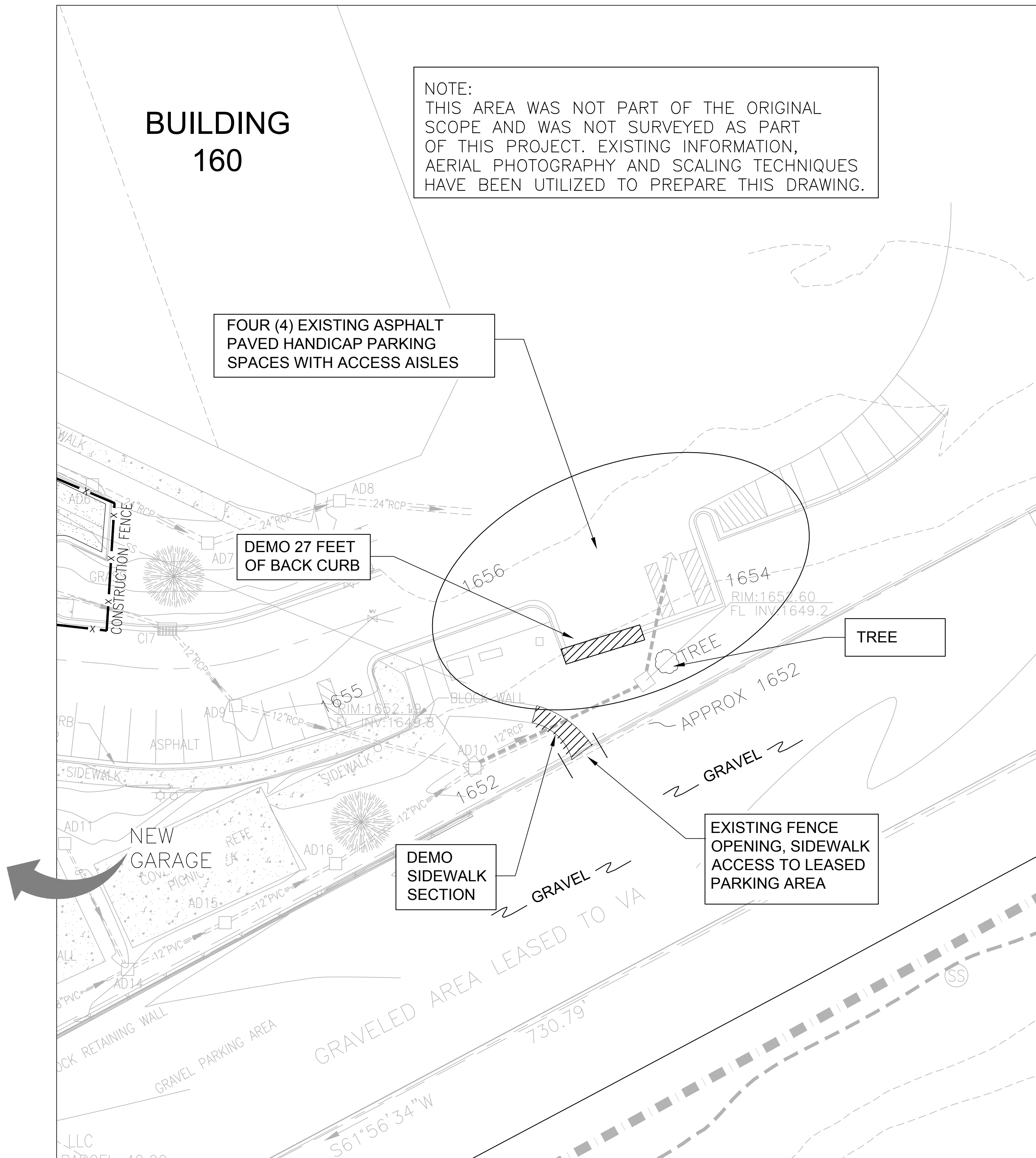
CLOSE EXISTING
FENCE OPENING

NOTE:
DURING THE ENTIRE COURSE OF CONSTRUCTION, THE
INTEGRITY OF THE STORM WATER SYSTEM MUST BE
MAINTAINED TO ALLOW STORM WATER FROM
UPGRADIENT TO PASS THROUGH THE PROJECT SITE.

FINAL CONSTRUCTION DRAWINGS
APPROVED FOR CONSTRUCTION

Dwg. File	ARCHITECT/ENGINEERS:	MICHAEL D. TOOTLE, PE Florida Reg. 67818	CONSULTANTS:	Approved:	Drawing Title	Project Title	Date
	AKEA INC. 3603 NW 98TH ST., SUITE B GAINESVILLE, FLORIDA 32606 PH: (352) 474-6124 FAX: (352) 474-6324 CERT OF AUTH: FL #26693 EXPIRES: 02/28/2017		WALKER PARKING CONSULTANTS 4904 Eisenhower Blvd Suite 150 Tampa, FL 33634 813.888.5800 Ph 813.888.5822 Fax BE-0003840 www.walkerparking.com	Asst. Chief, Engineering Service Engineering Bldg. Maint. Foreman Engineering Operation Foreman Engineering Health & Safety Engineering Planning & Analysis C.O.T.R.	SITE PLAN	CONSTRUCT 525 SPACE PARKING GARAGE CONTRACT No. VA249-14-C-0150 P.O. No. 621C40254	MARCH 26, 2015
(1) REVISION TO INCLUDE PVA COMMENTS Revisions	06/30/15 Date	AKEA, INC. SEAL	FRANK DAUCHTRY architect 200 E. Government Street Suite 240-A Pensacola, FL 32502 Voice 850-433-3023 Fax 850-433-3025 Email frank@frankda.com		Approved: Chief, Engineering Service Approved: Service Chief	Building Number 160 Checked SSH Drawn MDT Location VAMC MOUNTAIN HOME, TENNESSEE	Project No. 621-330 DRAWING NO. C300 Page 21 of 131

three inches = one foot
one and one-half inches = one foot
one inch = one foot
three-quarters inch = one foot
one-half inch = one foot
one-quarter inch = one foot
three-eighths inch = one foot
one-eighth inch = one foot
one-sixteenth inch = one foot

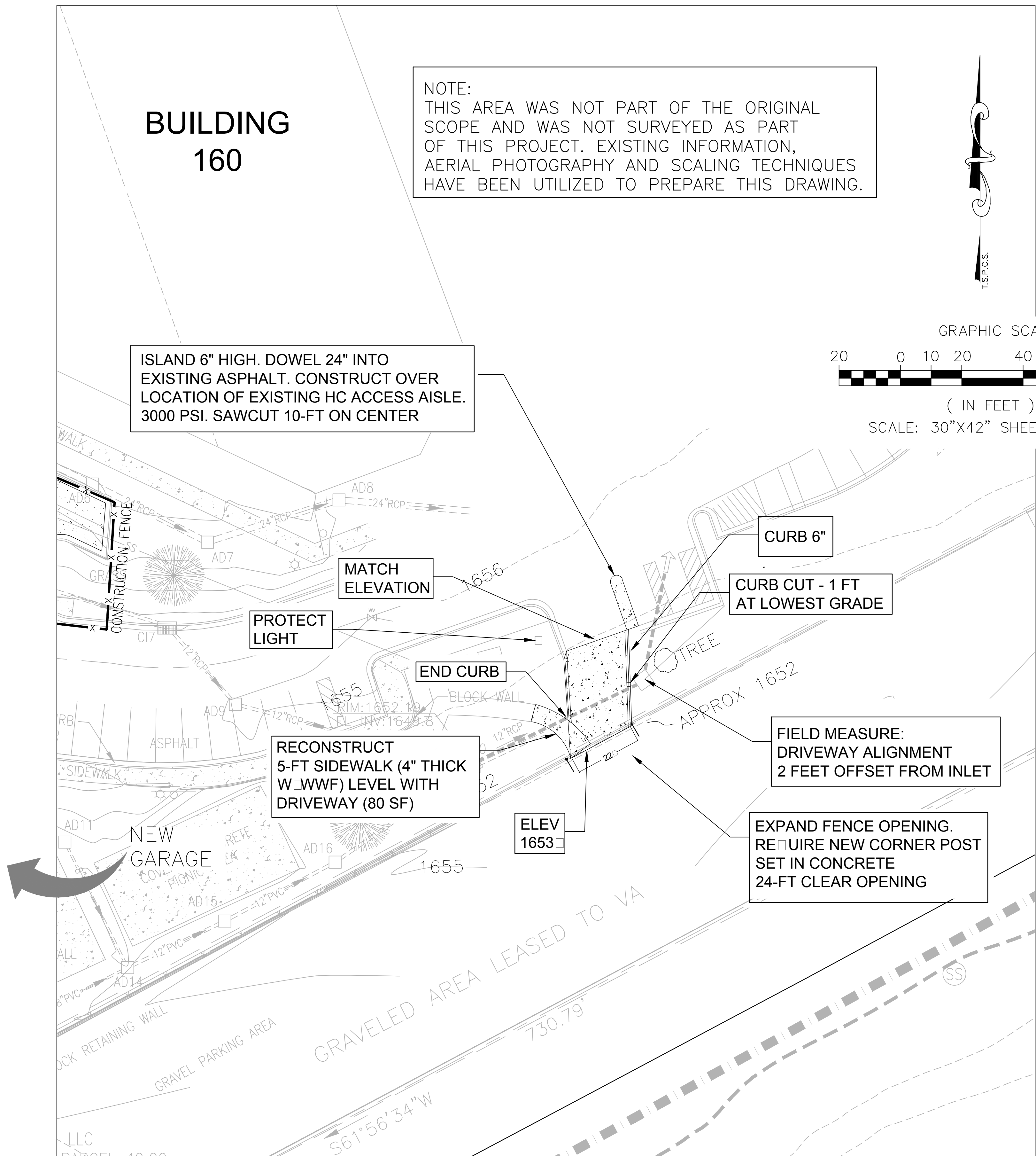


EXISTING CONDITIONS:
NEW DRIVEWAY LOCATION

NOTE:
THIS ITEM MUST BE COMPLETED AT PROJECT START.

THE INTENT OF THIS DRIVEWAY ACCESS IS TO PROVIDE A CONCRETE DRIVEWAY TO THE VA-LEASED PARKING AREA.

THE CURRENT ACCESS WILL BE ELIMINATED AT THE BEGINNING OF PARKING LOT CONSTRUCTION AND WILL NOT BE RESTORED.



PROPOSED NEW
CONCRETE DRIVEWAY

NOTE:
THIS ITEM MUST BE COMPLETED AT PROJECT START.

THE DRIVEWAY ALIGNMENT MAY BE FIELD ADJUSTED. CRITERIA OFFSET OF 2-FT FROM EDGE OF INLET.

CONCRETE 6" THICKNESS WITH WWF. SAWCUT 10-FT OCEW. 750 SF SURFACE AREA. 60 FEET OF 6" CURB.

FOLLOW EXISTING GRADE. CURB OPENING ON EAST SIDE AT LOWEST POINT.

FINAL CONSTRUCTION DRAWINGS
APPROVED FOR CONSTRUCTION

Dwg. File	ARCHITECT/ENGINEERS:	MICHAEL D. TOOTLE, PE Florida Reg. 67818	CONSULTANTS:	Approved:	Drawing Title	Project Title	Date
	AKEA INC. 3603 NW 98TH ST., SUITE B GAINESVILLE, FLORIDA 32606 PH: (352) 474-6124 FAX: (352) 474-6324 CERT OF AUTH: FL #26693 EXPIRES: 02/28/2017		WALKER PARKING CONSULTANTS 4904 Eisenhower Blvd Suite 150 Tampa, FL 33634 813.888.5800 Ph 813.888.5825 Fax BE-0003840 www.walkerparking.com	Asst. Chief, Engineering Service Engineering Bldg. Maint. Foreman Engineering Operation Foreman Engineering Health & Safety Engineering Planning & Analysis C.O.T.R.	NEW CONCRETE DRIVEWAY TO LEASED PARKING	CONSTRUCT 525 SPACE PARKING GARAGE CONTRACT No. VA249-14-C-0150 P.O. No. 621C40254	MARCH 26, 2015
Revisions		AKEA, INC.	SEAL		Approved: Chief, Engineering Service Approved: Service Chief	Building Number 160 Checked SSH Drawn MDT Location VAMC MOUNTAIN HOME, TENNESSEE	Project No. 621-330 DRAWING NO. C301 Page 22 of 131

PROJECT SITE
BENCHMARK

738,429.8567 N
3,037,100.7458 E

VERTICAL DATUM:
NAVD88

PROJECT BENCHMARK
DISK IN CONCRETE BASE
OF LIGHT POLE
ELEVATION: 1677.53

NAL HOME FOR DISABLED SO
VAP 54B, GROUP B, PARCEL

NEW CURB & GUTTER
370 FT ALONG BRADFORD
PEAR LANE (SEE DETAIL)

NEW SIDEWALK
6-FT WIDE ADJACENT TO
BRADFORD PEAR LANE

NEW SIDEWALK 175 FEET
NORTH-SOUTH RUNNING
5-FT WIDE TO MATCH EXISTING
2-FEET OFFSET FROM EDGE
OF GARAGE

CONCRETE
TURNOUT TO
GRAVEL DRIVE

NEW CONCRETE
SIDEWALK

PROTECT
LIGHT

NEW FENCE ENTRANCE
12-FT WIDE OPENING
(NO GATE PROVIDED)

CLOSE EXISTING
FENCE OPENING

NOTE:
DURING THE ENTIRE COURSE OF CONSTRUCTION, THE
INTEGRITY OF THE STORM WATER SYSTEM MUST BE
MAINTAINED TO ALLOW STORM WATER FROM
UPGRADIENT TO PASS THROUGH THE PROJECT SITE.

FINAL CONSTRUCTION DRAWINGS
APPROVED FOR CONSTRUCTION

Dwg. File		ARCHITECT/ENGINEERS:		CONSULTANTS:		Approved:		Drawing Title		Project Title		Date		Department of Veterans Affairs	
		AKEA INC.		WALKER PARKING CONSULTANTS				SITE PAVING AND GRADING PLAN		CONSTRUCT 525 SPACE PARKING GARAGE		MARCH 26, 2015			
		3603 NW 98TH ST., SUITE B GAINESVILLE, FLORIDA 32606 PH: (352) 474-6124 FAX: (352) 474-6324 CERT OF AUTH: FL #26693 EXPIRES: 02/28/2017		4904 Eisenhower Blvd Suite 150 Tampa, FL 33634 813.888.5800 Ph 813.888.5822 Fax BE-0003840 www.walkerparking.com		FRANK DAUCHTRY architect 200 E. Government Street Suite 240-A Pensacola, FL 32502 Voice 850-433-3023 Fax 850-433-3025 Email frank@frankda.com				CONTRACT No. VA249-14-C-0150 P.O. No. 621C40254		Project No. 621-330			
		AKEA, INC.		SEAL						Building Number 160		Checked SSH			DRAWING NO. C310 Page 23 of 131

PROJECT SITE
BENCHMARK

738,429.8567 N
3,037,100.7458 E

VERTICAL DATUM:
NAVD88

PROJECT BENCHMARK
DISK IN CONCRETE BASE
OF LIGHT POLE
ELEVATION: 1677.53

NAL HOME FOR DISABLED SOLDIERS
MAP 54B, GROUP B, PARCEL 47.00

ADA ACCESSIBLE
SIDEWALK RAMP
TYPICAL OF 10

CROSS WALK &
STOP BAR

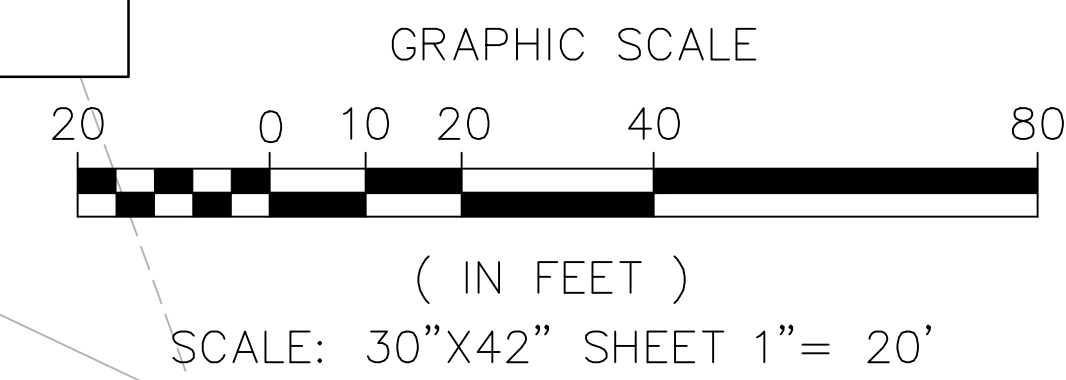
MUTCD R1-1
STOP SIGN

MUTCD R1-1
STOP SIGN

CROSS WALK &
STOP BAR

MUTCD R1-1
STOP SIGN

LAYDOWN AREA:
RE-STRIPE
PARKING LOT TO NEW
SCI/D LAYOUT.
11 NEW SPINAL CORD
INJURY PERMIT ONLY
PARKING SIGNS
SG1: CAR ONLY
SG2: VAN ONLY

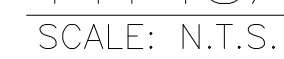


ETSU VENTURES, LLC
TAX MAP 54C, GROUP J, PARCEL 40.00
PARKING AREA LEASED TO VA FOR PARKING
(US LEASE NO. VA249R-0964)

NOTE:
DURING THE ENTIRE COURSE OF CONSTRUCTION, THE
INTEGRITY OF THE STORM WATER SYSTEM MUST BE
MAINTAINED TO ALLOW STORM WATER FROM
UPGRADIENT TO PASS THROUGH THE PROJECT SITE.

FINAL CONSTRUCTION DRAWINGS
APPROVED FOR CONSTRUCTION

Dwg. File		ARCHITECT/ENGINEERS:		CONSULTANTS:		Approved:		Drawing Title		Project Title		Date	
		AKEA INC.		WALKER PARKING CONSULTANTS		Asst. Chief, Engineering Service		SITE SIGNAGE AND STRIPING PLAN		CONSTRUCT 525 SPACE PARKING GARAGE		MARCH 26, 2015	
		3603 NW 98TH ST., SUITE B GAINESVILLE, FLORIDA 32606 PH: (352) 474-6124 FAX: (352) 474-6324 CERT OF AUTH: FL #26693 EXPIRES: 02/28/2017		MICHAEL D. TOOTLE, PE Florida Reg. 67818		Engineering Bldg. Maint. Foreman				CONTRACT No. VA249-14-C-0150 P.O. No. 621C40254		Project No. 621-330	
				AKEA, INC.		Engineering Operation Foreman				Building Number 160		Checked SSH	
				SEAL		Engineering Health & Safety				Location VAMC MOUNTAIN HOME, TENNESSEE		DRAWING NO. C320	
						Engineering Planning & Analysis						Page 24 of 131	
						C.O.T.R.							

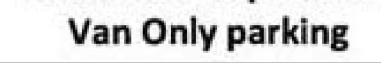


1. THE MOISTURE CONTENT SHALL BE AT LEAST 1 PERCENT ABOVE OPTIMUM DURING COMPACTION OF THE RAW SUBGRADE.
2. THE COMPACTED SUBBASE COURSE IN ALL OF THE PAVING SECTIONS CAN BE REPLACED WITH AGGREGATE BASE COURSE USING THE SAME THICKNESS AND COMPACTION REQUIREMENTS.



1. DOUBLE GATE TO BE 12'-0" CLEAR OPENING (6' EA.)
2. GALVANIZED STEEL WOVEN WIRE FABRIC TO BE STRETCHED TAUT W/ STRETCHER BARS AND STRAPS AND FASTENED TOP & BOTTOM AND AT LINE POSTS WITH GALV. PIG RING TIES.
3. GATE TO BE SECURED OPEN WITH GATE STOP SET IN CONCRETE.

SCALE: N.T.S.



SCALE: N.T.S.



VA FORM 08-6231, DEC 1989

PROJECT SITE
BENCHMARK

738,429.8567 N
3,037,100.7458 E

VERTICAL DATUM:
NAVD88

NAL HOME FOR DISABLED SOLDIERS
MAP 54B, GROUP B, PARCEL 47.00

8" TO 6" WATER LINE TAP
AND 6" VALVE.

PROJECT BENCHMARK
DISK IN CONCRETE BASE
OF LIGHT POLE
ELEVATION: 1677.53

CONFLICT WITH VAMC
ELECTRIC AND STORM UTILITIES.
POSSIBLE CROSSINGS. UTILITIES
MUST BE FIELD LOCATED.

EXISTING VAMC 8" WATER
LINE APPROXIMATE. MUST BE
FIELD LOCATED.

EXISTING HYDRANT

GRAPHIC SCALE
20 0 10 20 40 80
(IN FEET)
SCALE: 30"X42" SHEET 1"= 20'

CONFLICT WITH VAMC
SANITARY SEWER, ELECTRIC
AND STORM WATER. POSSIBLE
CROSSINGS. UTILITIES MUST
BE FIELD LOCATED.

EXISTING VAMC 8" WATER
LINE APPROXIMATE. MUST BE
FIELD LOCATED.

NEW 6" DUCTILE IRON
WATER LINE LOOP.
(950 LF)
COORDINATE LOCATION
WITH 6" FIRE LOOP

NEW HYDRANT
>40 FT FROM
STRUCTURE
(THIS HYDRANT
IS SET OUTSIDE
THE PROJECT
LIMITS)

CHILL WATER (CW) UTILITY CONFLICT.
THE EXACT PATH OF CWR MUST BE FIELD
LOCATED BY EXCAVATION. UTILITY SHALL
BE RELOCATED OUTSIDE FOOTPRINT.
THERE EXISTS 15 FEET SEPARATION
GARAGE AND PROPERTY BOUNDARY.

COORDINATE WITH INSTALLTION
OF 6" WATER LINE LOOP

ESTIMATE 103 FT X (2) 16" CHILL WATER
AND CHILL WATER RETURN

FIRE LOOP TO
FOLLOW WATER
SEE F200 AND F201

EXISTING 3" PVC WATER
APPROX 5 FT FROM FENCELINE.
MUST BE FIELD LOCATED.

NEW HYDRANT
>40 FT FROM
STRUCTURE

NEW HYDRANT
>40 FT FROM
STRUCTURE

NEW 6" DUCTILE IRON
WATER LINE LOOP.
(950 LF)
COORDINATE LOCATION
WITH 6" FIRE LOOP

NEW HYDRANT
>40 FT FROM
STRUCTURE
(THIS HYDRANT
IS SET OUTSIDE
THE PROJECT
LIMITS)

NEW 6" DUCTILE IRON
WATER LINE LOOP.
(950 LF)

NEW 2" VALVE AND
WATER LINE TO
MECHANICAL ROOM
(185 FEET)

WATER CROSSING
OVER SW

WATER CROSSING
OVER STORM

WATER VALVE

SEE P200

CHILL WATER (CW) IS SHOWN
APPROXIMATE. THERE ARE NO
VISIBLE MARKINGS TO INDICATE
PATH AND SEPARATION OF CW/CWR

FINAL CONSTRUCTION DRAWINGS
APPROVED FOR CONSTRUCTION

Dwg. File		ARCHITECT/ENGINEERS:		CONSULTANTS:		Approved:		Drawing Title		Project Title		Date	
		AKEA INC.		WALKER PARKING CONSULTANTS		Frank Daughtry Architect		SITE UTILITY PLAN WATER AND STORM WATER		CONSTRUCT 525 SPACE PARKING GARAGE		MARCH 26, 2015	
		3603 NW 98TH ST., SUITE B GAINESVILLE, FLORIDA 32606 PH: (352) 474-6124 FAX: (352) 474-6324 CERT OF AUTH: FL #26693 EXPIRES: 02/28/2017		4904 Eisenhower Blvd Suite 150 Tampa, FL 33634 813.888.5800 Ph 813.888.5822 Fax BE-0003840 www.walkerparking.com		200 E. Government Street Suite 240-A Pensacola, FL 32502 Voice 850-433-3023 Fax 850-433-3025 Email frank@frankda.com		Asst. Chief, Engineering Service Engineering Bldg. Maint. Foreman Engineering Operation Foreman Engineering Health & Safety Engineering Planning & Analysis C.O.T.R.		CONTRACT No. VA249-14-C-0150 Building Number 160 Checked SSH Drawn MDT Location VAMC MOUNTAIN HOME, TENNESSEE		Project No. 621-330 DRAWING NO. C400 Page 26 of 131	
(1) REVISION TO INCLUDE PVA COMMENTS Revisions		06/30/15 Date		AKEA, INC.		SEAL							

