

JAMES H. QUILLEN
VA MEDICAL CENTER

Mountain Home (Johnson City), Tennessee
(VAMC CAMPUS MAP REDUCED TO FIT - APPROXIMATE TO SCALE)

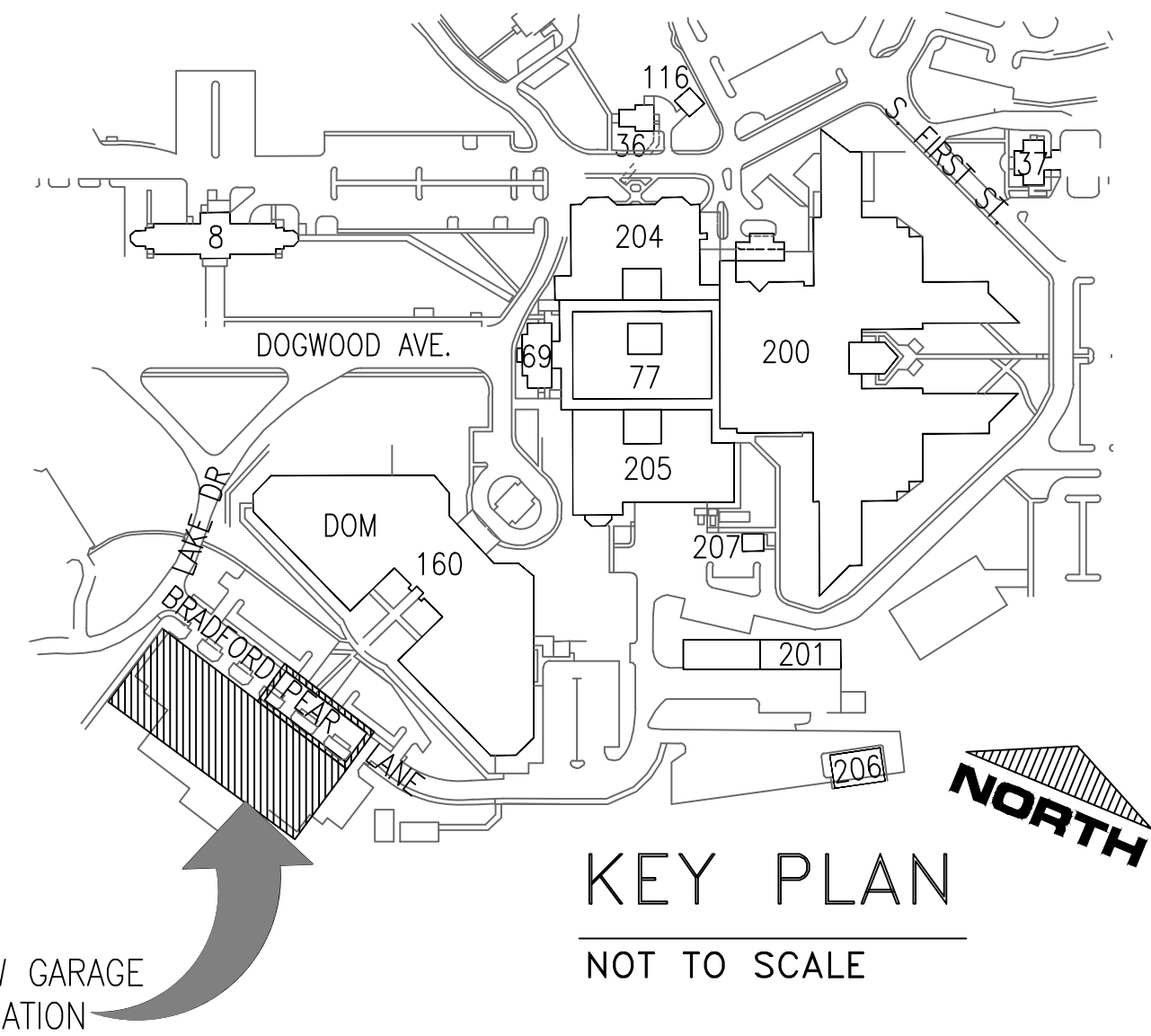
BUILDING INDEX

| NO. | BUILDING |
|-----|------------------------------------|
| 1 | ETSU MED. SCHOOL |
| 2 | ETSU MED. SCHOOL/ VA |
| 3 | VA OFFICE/EDUCATION (CONST.) |
| 4 | ETSU MED. SCHOOL LIBRARY |
| 5 | VA RESEARCH LAB (CONST.) |
| 6 | ETSU RESEARCH LAB (FUTURE) |
| 7 | ETSU RESEARCH LAB (FUTURE) |
| 8 | SHOPS, CLINICS, AMM.SVC./ FISCAL |
| 10 | BANDSTAND |
| 13 | CHAPEL |
| 15 | HOSPITAL GUEST HOUSE (LEASED) |
| 16 | SINGLE QTRS. (LEASED) |
| 17 | CARNEGIE LIBRARY (LEASED) |
| 19 | SINGLE QUARTERS |
| 20 | HUMAN RESOURCE MGT. |
| 34 | MUSEUM/ETSU LABS/BOOKSTORE |
| 35 | F.M.SHOPS/CANTEEN |
| 36 | MEMORIAL HALL THEATER (Leased) |
| 37 | OLD MORGUE (VACANT) |
| 39 | PSYCH. BLDG. |
| 40 | DUPLEX QUARTERS |
| 41 | RESIDENT ENGINEERS |
| 42 | FAC. MGT. ADMIN. OFFICES |
| 43 | FAC. MGT. PLANNING/DESIGN (VACANT) |
| 44 | SINGLE QUARTERS |
| 45 | SINGLE QUARTERS |
| 46 | SINGLE QUARTERS |
| 47 | SINGLE QUARTERS |
| 52 | ETSU MED. SCHOOL |
| 53 | U.S. POST OFFICE |
| 60 | ETSU (VACANT) |
| 69 | HOSPITAL ADMIN. BLDG. |
| 77 | CLINICAL SUPPORT BLDG. |
| 83 | 4-CAR GARAGE |
| 85 | 2-CAR GARAGE |
| 96 | FLAGPOLE |
| 98 | 3-CAR GARAGE |
| 99 | 2-CAR GARAGE |
| 103 | WATER METER/VALVE HOUSE |
| 107 | WATER TANK |
| 108 | MHEC BOILER PLANT |
| 115 | MAIN ELECT. SWITCHGEAR |
| 116 | EMER. GEN. BLDG. |
| 117 | NAT'L CEMETERY ADMIN. |
| 118 | NAT'L CEMETERY STOR. |
| 119 | ETSU MED. SCHOOL LAB BLDG. |
| 120 | EMER. GEN. BLDG.1,4,119 |
| 160 | DOMICILIARY/PRIMARY CARE |
| 161 | EMER. GEN BLDG.160 |
| 162 | NHCU |
| 178 | ETSU RESEARCH BLDG. |
| 200 | HOSPITAL |
| 201 | F.M. MAINT. |
| 204 | OUT-PATIENT CLINIC/ER |
| 205 | LAUNDRY/WAREHOUSE |
| 206 | F.M. GROUNDSKEEPING FACILITY |
| 207 | MRI |
| 208 | MHEC CO-GEN ENERGY CTR |
| 209 | MHEC THERMAL STOR. TANK |

NOTE
AS A RECOMMENDED CONSTRUCTION
HAUL ROUTE, CONTRACTOR MUST
VERIFY THE CAPACITY OF THE
EXISTING BRIDGE.

IF CAPACITY OF BRIDGE IS NOT
SUFFICIENT, THEN ALTERNATE
ROUTE MUST BE IDENTIFIED.

NEW GARAGE
LOCATION
339'x189'



KEY PLAN
NOT TO SCALE

FINAL CONSTRUCTION DRAWINGS
APPROVED FOR CONSTRUCTION

| | | | | | | | |
|-----------|----------------------|--|--|---|---|---|--|
| Dwg. File | ARCHITECT/ENGINEERS: | MICHAEL D. TOOTLE, PE Florida Reg. 67818 | CONSULTANTS: | Approved: | Drawing Title | Project Title | Date |
| | AKEA INC. | 3603 NW 98TH ST., SUITE B GAINESVILLE, FLORIDA 32606 PH: (352) 474-6124 FAX: (352) 474-6324 CERT OF AUTH: FL #26693 EXPIRES: 02/28/2017 | WALKER PARKING CONSULTANTS 4904 Eisenhower Blvd Suite 150 Tampa, FL 33634 813.888.5800 Ph 813.888.5822 Fax BE-0003840 www.walkerparking.com | Asst. Chief, Engineering Service Engineering Bldg. Maint. Foreman Engineering Operation Foreman Engineering Health & Safety Engineering Planning & Analysis C.O.T.R. | CONSTRUCTION HAUL ROUTE & TRAFFIC ROUTING PLAN | CONSTRUCT 525 SPACE PARKING GARAGE CONTRACT No. VA249-14-C-0150 P.O. No. 621C40254 | MARCH 26, 2015 |
| Revisions | | SEAL | FRANK DAUGHTRY architect 200 E. Government Street Suite 240-A Pensacola, FL 32502 Voice 850-433-3023 Fax 850-433-3025 Email frank@frankda.com | | Approved: Chief, Engineering Service Approved: Service Chief | Building Number 160 Checked SSH Drawn MDT Location VAMC MOUNTAIN HOME, TENNESSEE | Project No. 621-330 DRAWING NO. C500 Page 28 of 131 |

PROTECT ALL TREES ALONG ALL SITE BOUNDARIES IF POSSIBLE. TREES IDENTIFIED TO BE REMOVED WILL BE MARKED IN THE FIELD AND CONFIRMED WITH THE COR PRIOR TO REMOVAL (TYPICAL ALL TREES)

SEVEN (7) CONCRETE OR METAL FABRICATED BENCHES PLACED IN THIS AREA AS DECORATIVE FEATURES (TYP). PRODUCT SELECTION TO BE APPROVED BY SUBMITTAL

UNDER OVERHANG, IN LIEU OF LANDSCAPING, INSTALL HARDSCAPE (COLORFUL STONES MORTORED IN PLACE) APPROX 2,100 SF

PROTECT ALL TREES ALONG ALL SITE BOUNDARIES IF POSSIBLE. TREES IDENTIFIED TO BE REMOVED WILL BE MARKED IN THE FIELD AND CONFIRMED WITH THE COR PRIOR TO REMOVAL (TYPICAL ALL TREES)

LANDSCAPE RESTORATION NOTES:

ALL DISTURBED AREA SHALL BE RESTORED TO GRASS SURFACE, SOD OR SEED, HOWEVER, SEED SHALL NOT BE UTILIZED ON SLOPES GREATER THAN 5 PERCENT.

IN LIEU OF SOD ON SLOPES GREATER THAN 5 PERCENT, HYDROSEED TECHNOLOGY MAY BE USED.

SILT FENCE TO REMAIN UNTIL 95 PERCENT COVERAGE IS ESTABLISHED.

THE SEED SOD MIX HAS BEEN UTILIZED FOR BLDG 160 CONSTRUCTION:

APROXIMATELY 39,500 SQUARE FEET.

SEE SPECIFICATION 32 90 00 FOR MORE INFO INCLUDING ACCEPTABLE SEASONS FOR INSTALLATION.

SEED MIX

| | |
|-----|-----------------------------|
| 70% | REBEL FESCUE |
| 20% | PENNFIRE PERENNIAL RYEGRASS |
| 10% | ADELPHIS BLUEGRASS |

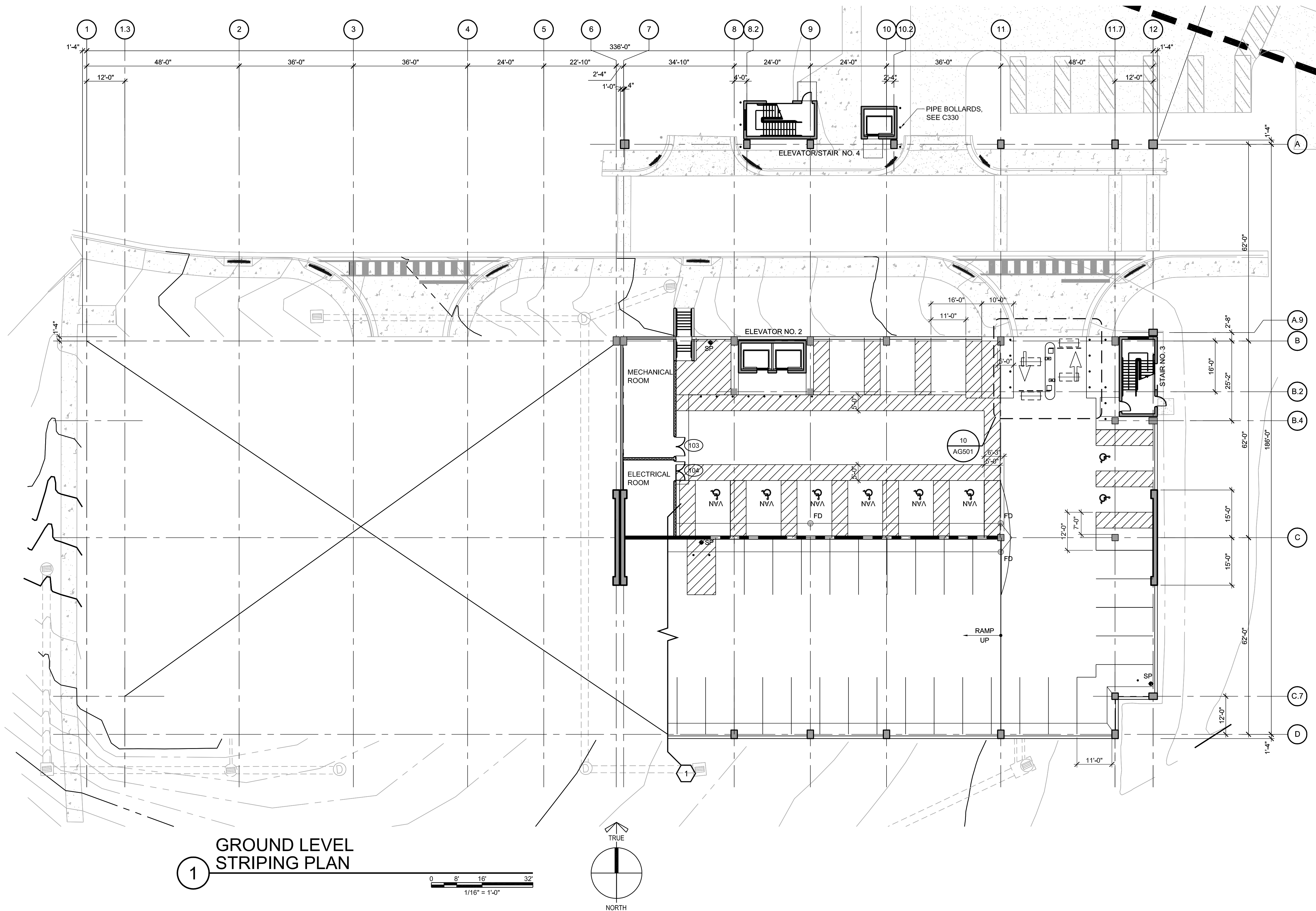
SEED AT 4 LBS / 1000 SF

| | |
|-----|--------------|
| SOD | REBEL FESCUE |
|-----|--------------|

FINAL CONSTRUCTION DRAWINGS
APPROVED FOR CONSTRUCTION

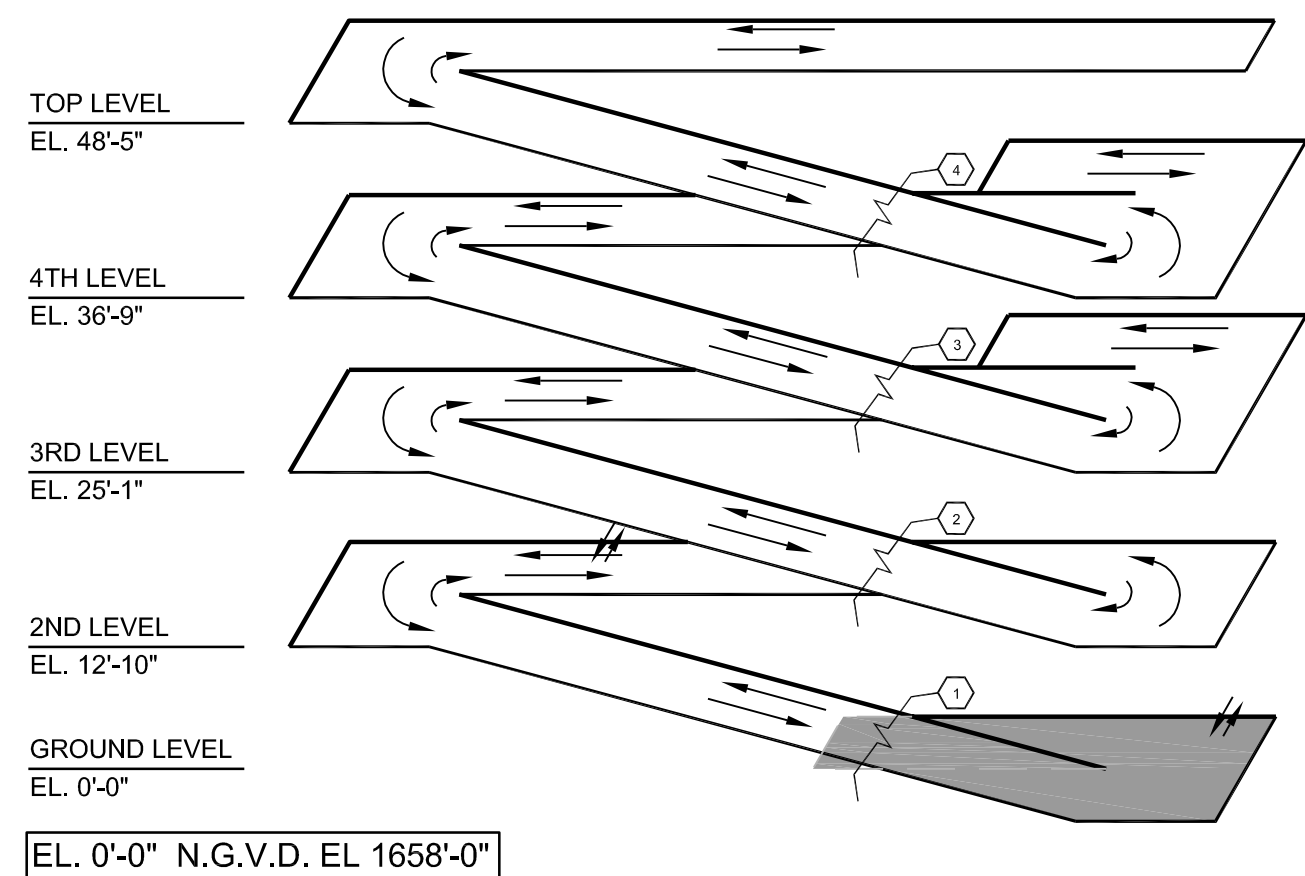
| | | | | | | | | | | | | | | |
|------------------|--|--|--|--|--|---|--|---|--|--|--|------------------------------------|--|---------------------------------------|
| Dwg. File | | ARCHITECT/ENGINEERS: | | CONSULTANTS: | | Approved: | | Drawing Title | | Project Title | | Date | | Department of Veterans Affairs |
| | | AKEA INC. | | WALKER PARKING CONSULTANTS | | | | LANDSCAPE PLAN | | CONSTRUCT 525 SPACE PARKING GARAGE | | MARCH 26, 2015 | | |
| | | 3603 NW 98TH ST., SUITE B GAINESVILLE, FLORIDA 32606 PH: (352) 474-6124 FAX: (352) 474-6324 CERT OF AUTH: FL #26693 EXPIRES: 02/28/2017 | | 4904 Eisenhower Blvd Suite 150 Tampa, FL 33634 813.888.5800 Ph 813.888.5822 Fax BE-0003840 www.walkerparking.com | | 200 E. Government Street Suite 240-A Pensacola, FL 32502 Voice 850-433-3023 Fax 850-433-3025 Email frank@frankda.com | | Engineering Bldg. Maint. Foreman Engineering Operation Foreman Engineering Health & Safety Engineering Planning & Analysis C.O.T.R. | | CONTRACT No. VA249-14-C-0150 P.O. No. 621C40254 | | Project No. 621-330 | | |
| | | SEAL | | SEAL | | | | Approved: Chief, Engineering Service Approved: Service Chief | | Building Number 160 Checked SSH Drawn MDT | | DRAWING NO. L100 Page 29 of 131 | | |
| | | Revisions | | AKEA, INC. | | SEAL | | | | Location VAMC MOUNTAIN HOME, TENNESSEE | | | | |

VA FORM 08-6231, DEC 1989



- SHEET NOTES
1. FOR STRIPING DETAILS, SEE DWG. AG501.
 2. FOR STRIPING DIMENSIONS, SEE DWGS. AG101 THRU AG105.
 3. FOR GRAPHICS LOCATIONS AND TYPE, SEE DWGS. AG101 THRU AG105.
 4. FOR GRAPHICS SCHEDULE & DETAILS SEE DWG. AG601.
 5. FOR WALL SECTIONS, SEE A310 & A311
 6. FOR STAIR/ELEVATOR PLANS SEE DWGS. A410, A411, A412, A413 & A414.
 7. FOR EXTERIOR ELEVATIONS, SEE DWG. A201 & A202.
 8. FOR SPOT ELEVATIONS SEE STRUCTURAL DWGS.
 9. SEE CIVIL AND LANDSCAPE DRAWINGS FOR EXTERIOR LAYOUT.
 10. FOR FLOOR DRAINS, REFER TO MEP DWGS. FOR FINAL LOCATION
 11. INDICATES PLAN MATCH LINE.
 12. SEE S001 & S002 FOR ABBREVIATIONS.

- PLAN LEGEND
- STEEL PIPE BOLLARD, SEE AG501 & ENLARGED STAIR/ELEVATORS PLANS FOR TYPICAL LOCATIONS & DIMS. U.N.O.
 - 104 DOOR NUMBER, SEE DOOR SCHEDULE ON A431
 - FD FLOOR DRAIN, SEE PLUMBING DRAWINGS
 - CONCRETE MASONRY WALLS (CMU) SEE SPECS
 - SP FIRE STANDPIPE

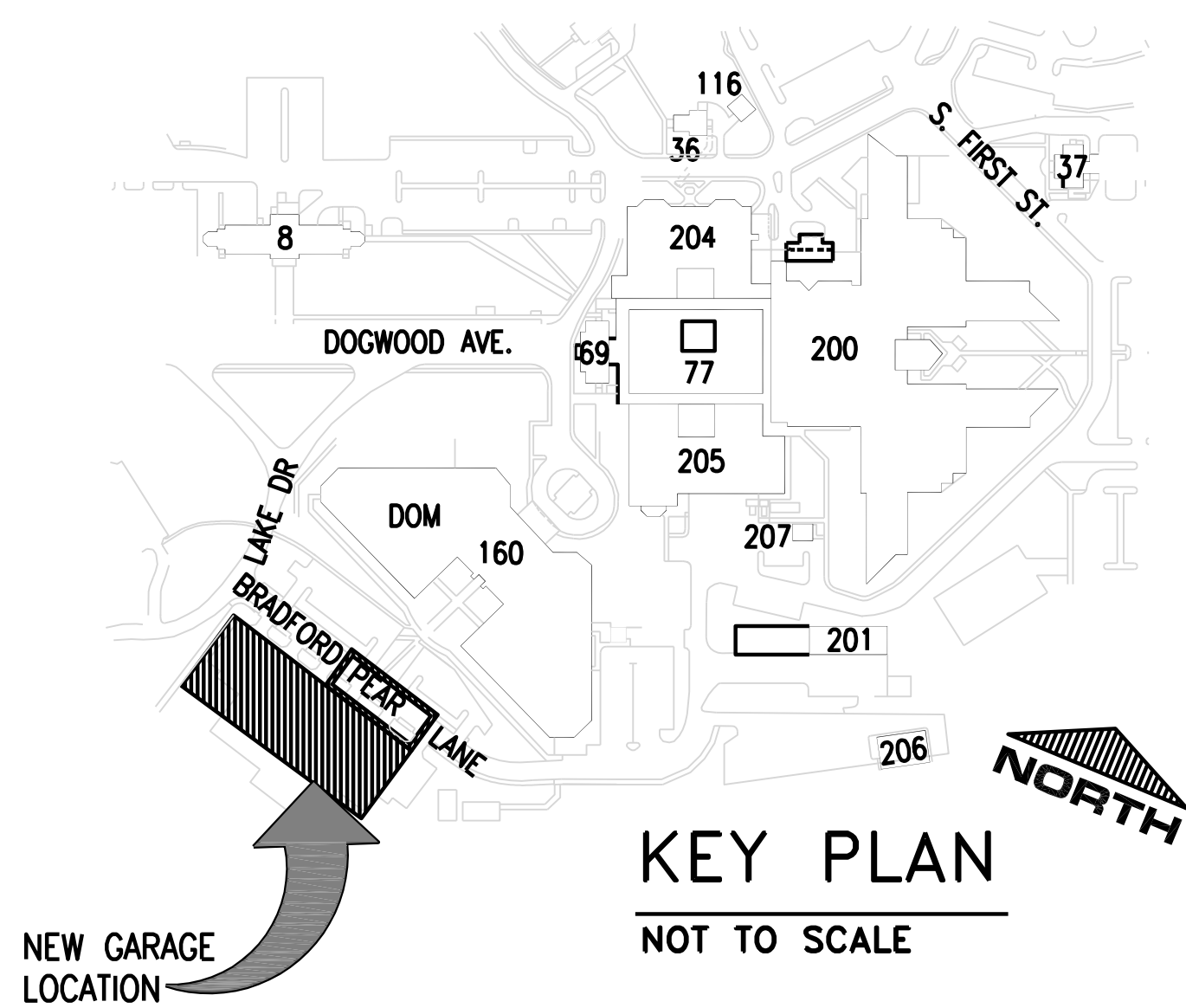


CAR COUNT ACTUAL

9'-0" 90" STANDARD SPACE

8'-0" 11'-0" 90" ACCESSIBLE SPACE

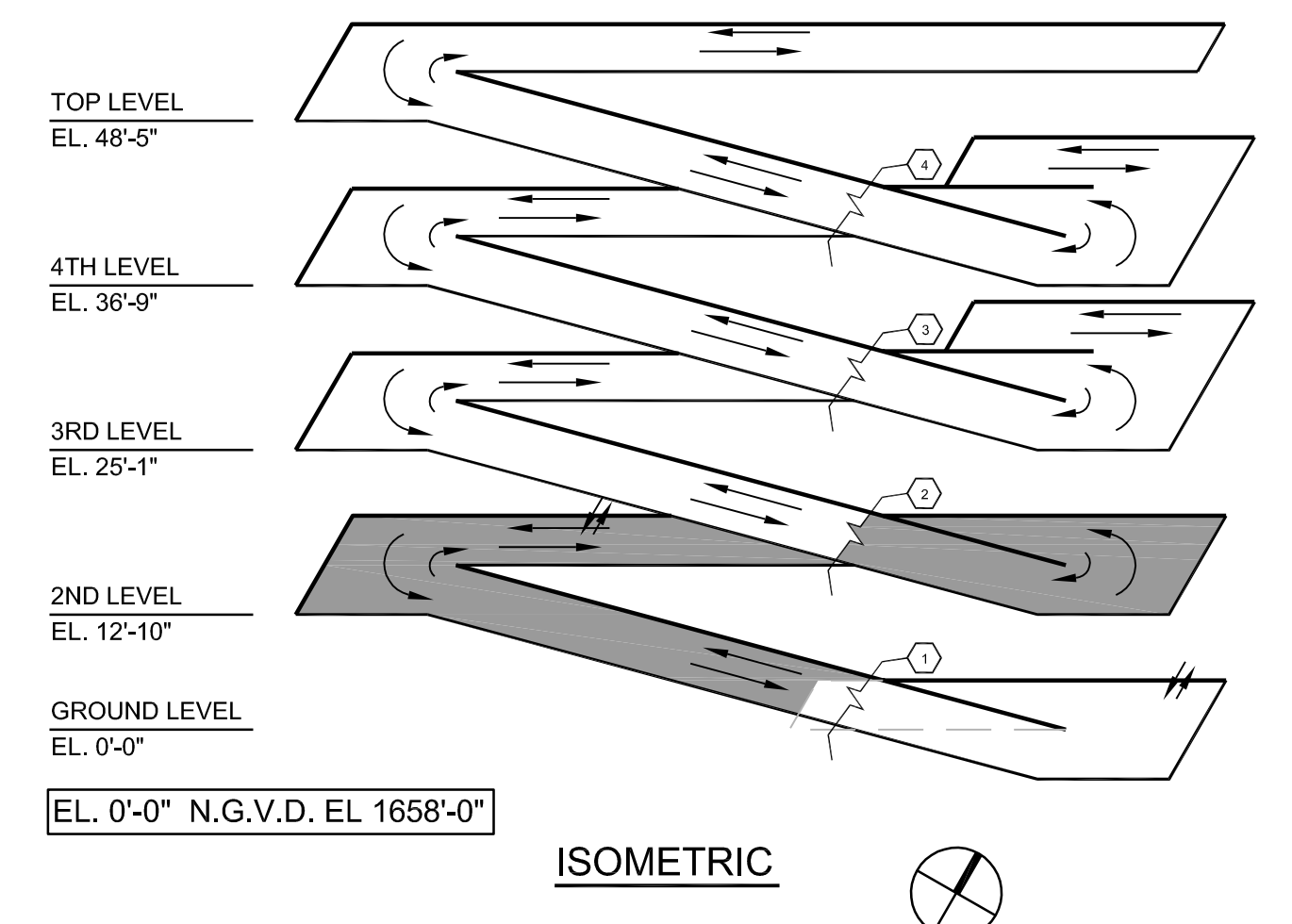
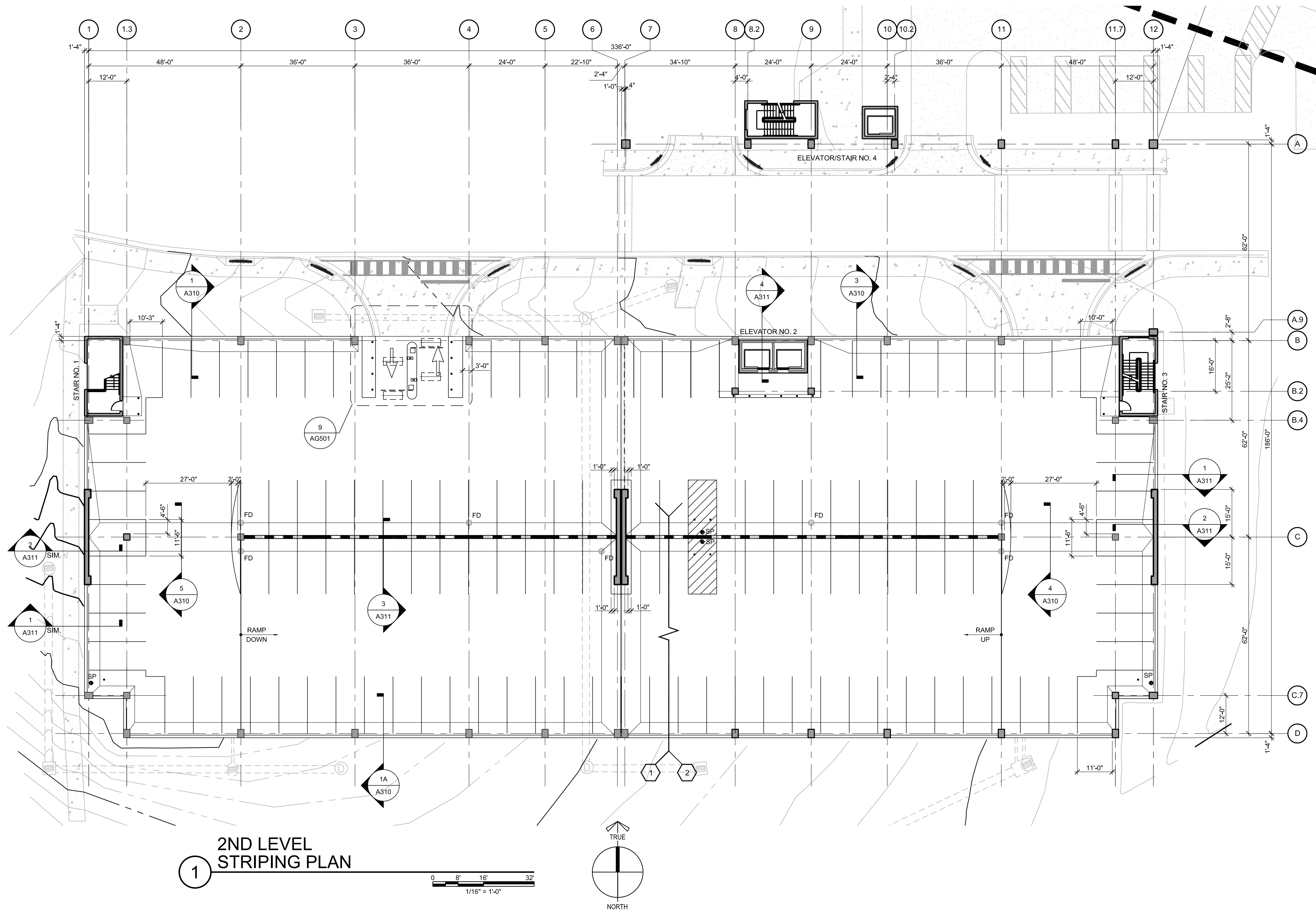
| LEVEL | STANDARD | CAR ACCESSIBLE | VAN ACCESSIBLE | SCI VAN ACCESSIBLE | TOTAL |
|--------|----------|----------------|----------------|--------------------|-------|
| GROUND | 29 | 2 | 6 | 3 | 40 |
| SECOND | 121 | 0 | 0 | 0 | 121 |
| THIRD | 129 | 5 | 2 | 0 | 136 |
| FOURTH | 144 | 0 | 0 | 0 | 144 |
| TOP | 98 | 0 | 0 | 0 | 98 |
| TOTAL | 521 | 7 | 8 | 3 | 539 |



FINAL CONSTRUCTION DRAWINGS

APPROVED FOR CONSTRUCTION

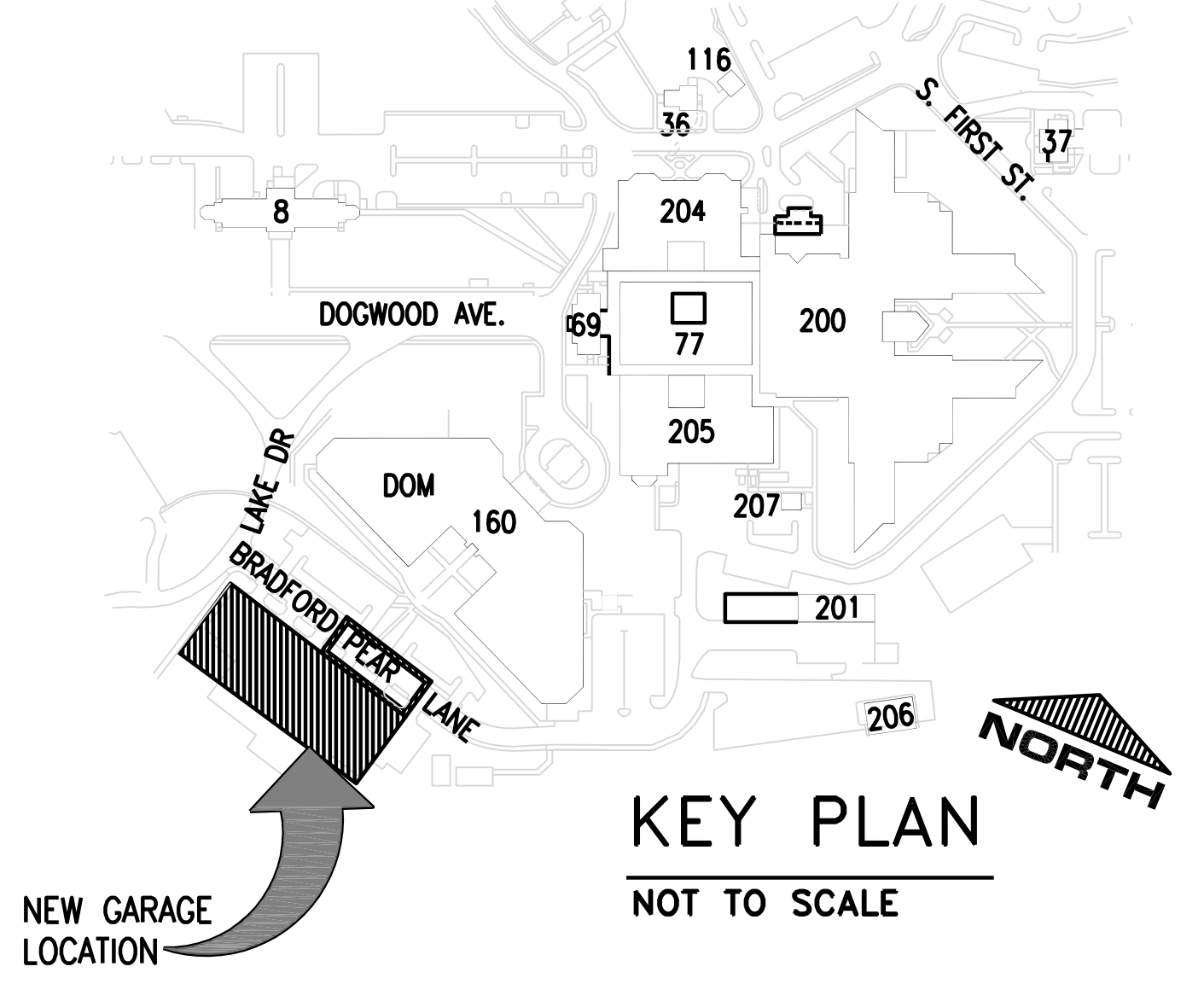
| | | | | | | |
|------------------|--|---|--|---|--|-----------------------|
| Dep. File | ARCHITECT/ENGINEERS: | CONSULTANTS: | Approved: | Drawing Title | Project Title | Date |
| | AKEA INC. | WALKER PARKING CONSULTANTS | Asst. Chief, Engineering Service | GROUND LEVEL STRIPING PLAN | CONSTRUCT 525 SPACE PARKING GARAGE | MARCH 26, 2015 |
| | 3603 NW 98TH ST., SUITE B GAINESVILLE, FLORIDA 32606 PH: (352) 474-6124 FAX: (352) 474-6324 CERT OF AUTH: FL #26693 EXPIRES: 02/28/2017 | 4904 Eisenhower Blvd Suite 150 Tampa, FL 33634 813.888.5800 Ph 813.888.5825 Fax BE-0003840 www.walkerparking.com | Engineering Bldg. Maint. Foreman | | CONTRACT No. VA249-14-C-0150 P.O. No. 621C40254 | Project No. 621-330 |
| | | FRANK DAUGHTRY architect 200 E. Government Street Suite 240-A Pensacola, FL 32502 Voice: 850-433-3023 Fax: 850-433-3025 Email: frank@frankda.com | Engineering Operation Foreman | Approved: Chief, Engineering Service | Building Number | DRAWING NO. |
| | | | Engineering Health & Safety | | 160 | A101 |
| | | | Engineering Planning & Analysis | Approved: Service Chief | Location | Page 30 of 131 |
| | | | C.O.T.R. | | VAMC MOUNTAIN HOME, TENNESSEE | |



1 2ND LEVEL STRIPING PLAN

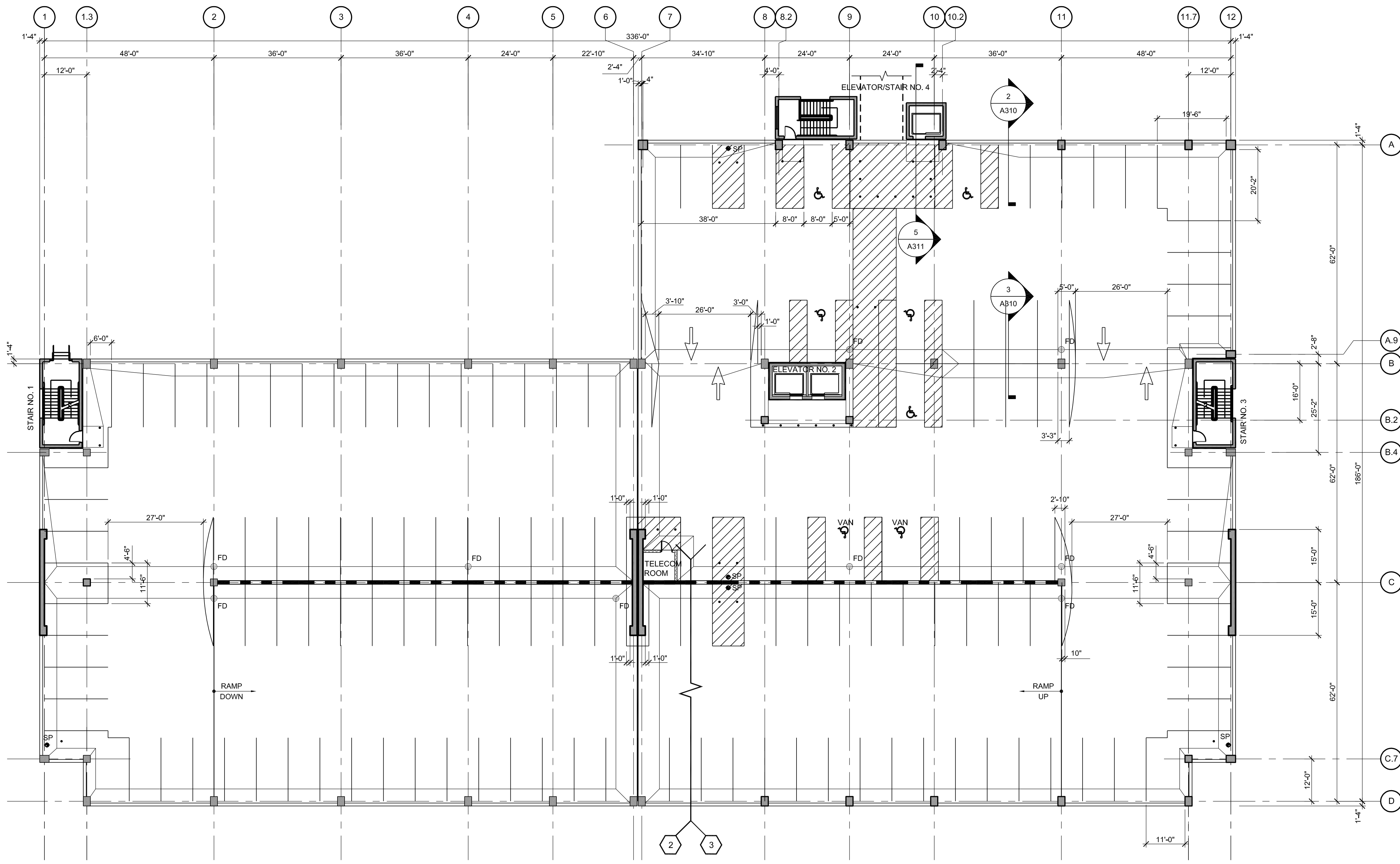
- SHEET NOTES**
1. FOR STRIPING DETAILS, SEE DWG. AG501.
 2. FOR STRIPING DIMENSIONS, SEE DWGS. AG101 THRU AG105.
 3. FOR GRAPHICS LOCATIONS AND TYPE, SEE DWGS. AG101 THRU AG105.
 4. FOR GRAPHICS SCHEDULE & DETAILS SEE DWG. AG601.
 5. FOR WALL SECTIONS, SEE A310 & A311
 6. FOR STAIR/ELEVATOR PLANS SEE DWGS. A410, A411, A412, A413 & A414.
 7. FOR EXTERIOR ELEVATIONS, SEE DWG. A201 & A202.
 8. FOR SPOT ELEVATIONS SEE STRUCTURAL DWGS.
 9. SEE CIVIL AND LANDSCAPE DRAWINGS FOR EXTERIOR LAYOUT.
 10. FOR FLOOR DRAINS, REFER TO MEP DWGS. FOR FINAL LOCATION
 11. INDICATES PLAN MATCH LINE.
 12. SEE S001 & S002 FOR ABBREVIATIONS.

- PLAN LEGEND**
- STEEL PIPE BOLLARD, SEE AG501 & ENLARGED STAIR/ELEVATORS PLANS FOR TYPICAL LOCATIONS & DIMS. U.N.O.
 - 104 DOOR NUMBER, SEE DOOR SCHEDULE ON A431
 - FD FLOOR DRAIN, SEE PLUMBING DRAWINGS
 - CONCRETE MASONRY WALLS (CMU) SEE SPECS
 - SP FIRE STANDPIPE



FINAL CONSTRUCTION DRAWINGS
APPROVED FOR CONSTRUCTION

| | | | | | | |
|------------------|--|---|--|---|--|-----------------------|
| Dep. File | ARCHITECT/ENGINEERS: | CONSULTANTS: | Approved: | Drawing Title | Project Title | Date |
| | AKEA INC. | WALKER PARKING CONSULTANTS | Asst. Chief, Engineering Service | 2ND LEVEL STRIPING PLAN | CONSTRUCT 525 SPACE PARKING GARAGE | MARCH 26, 2015 |
| | 3603 NW 98TH ST., SUITE B GAINESVILLE, FLORIDA 32606 PH: (352) 474-6124 FAX: (352) 474-6324 CERT OF AUTH: FL #26693 EXPIRES: 02/28/2017 | 4904 Eisenhower Blvd Suite 150 Tampa, FL 33634 813.888.5800 Ph 813.888.5825 Fax BE-0003840 www.walkerparking.com | Engineering Bldg. Maint. Foreman | | CONTRACT No. VA249-14-C-0150 P.O. No. 621C40254 | Project No. 621-330 |
| | | FRANK DAUCHTRY architect 200 E. Government Street Suite 240-A Pensacola, FL 32502 Voice: 850-433-3023 Fax: 850-433-3025 Email: frank@frankda.com | Engineering Operation Foreman | Approved: Chief, Engineering Service | Building Number | DRAWING NO. |
| | | | Engineering Health & Safety | | 160 | A102 |
| | | | Engineering Planning & Analysis | Approved: Service Chief | Location | Page 31 of 131 |
| | | | C.O.T.R. | | VAMC MOUNTAIN HOME, TENNESSEE | |

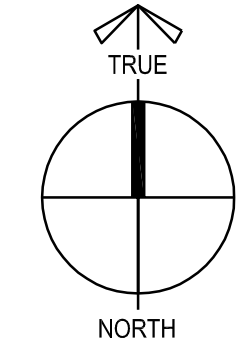


1 3RD LEVEL STRIPING PLAN

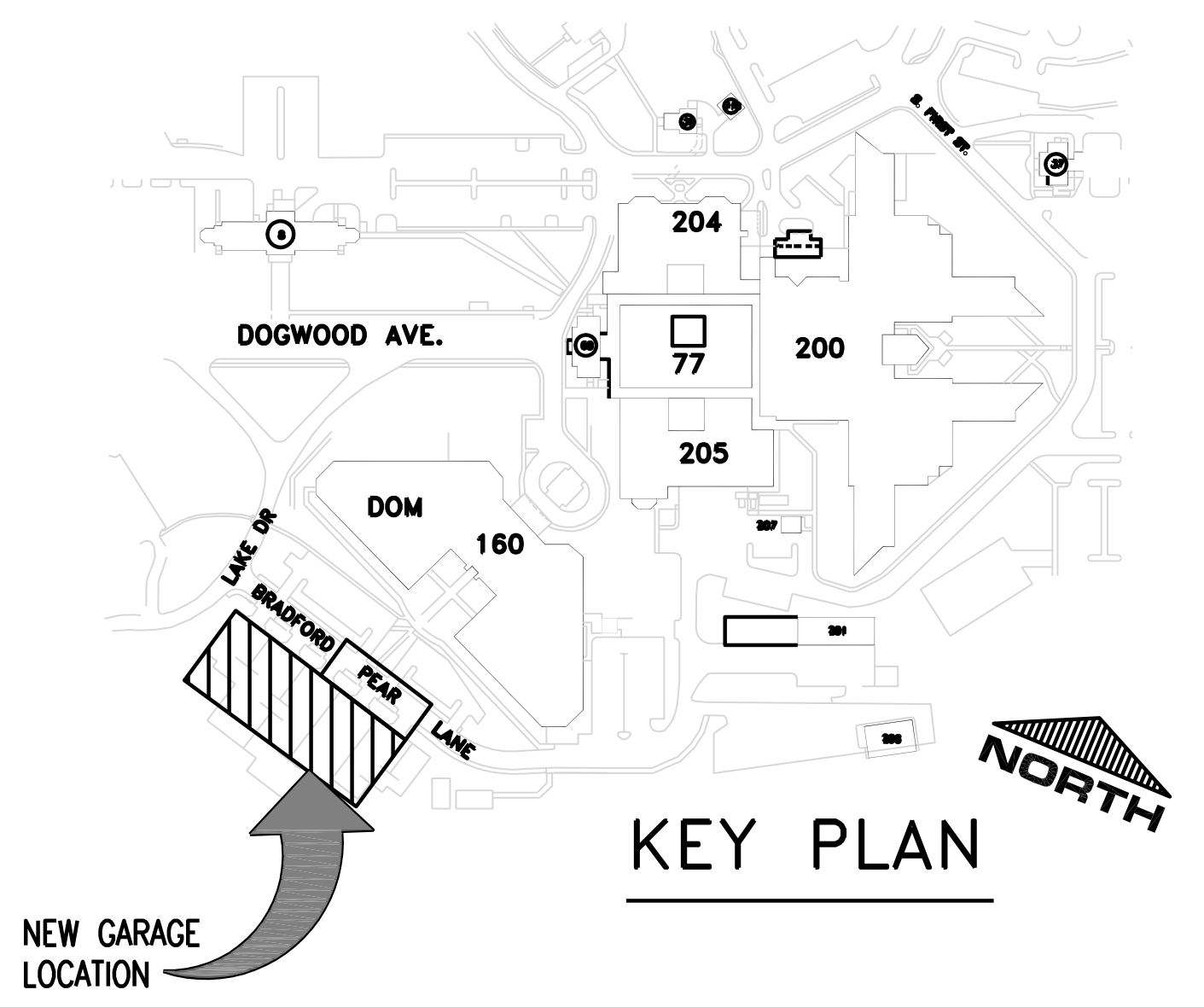
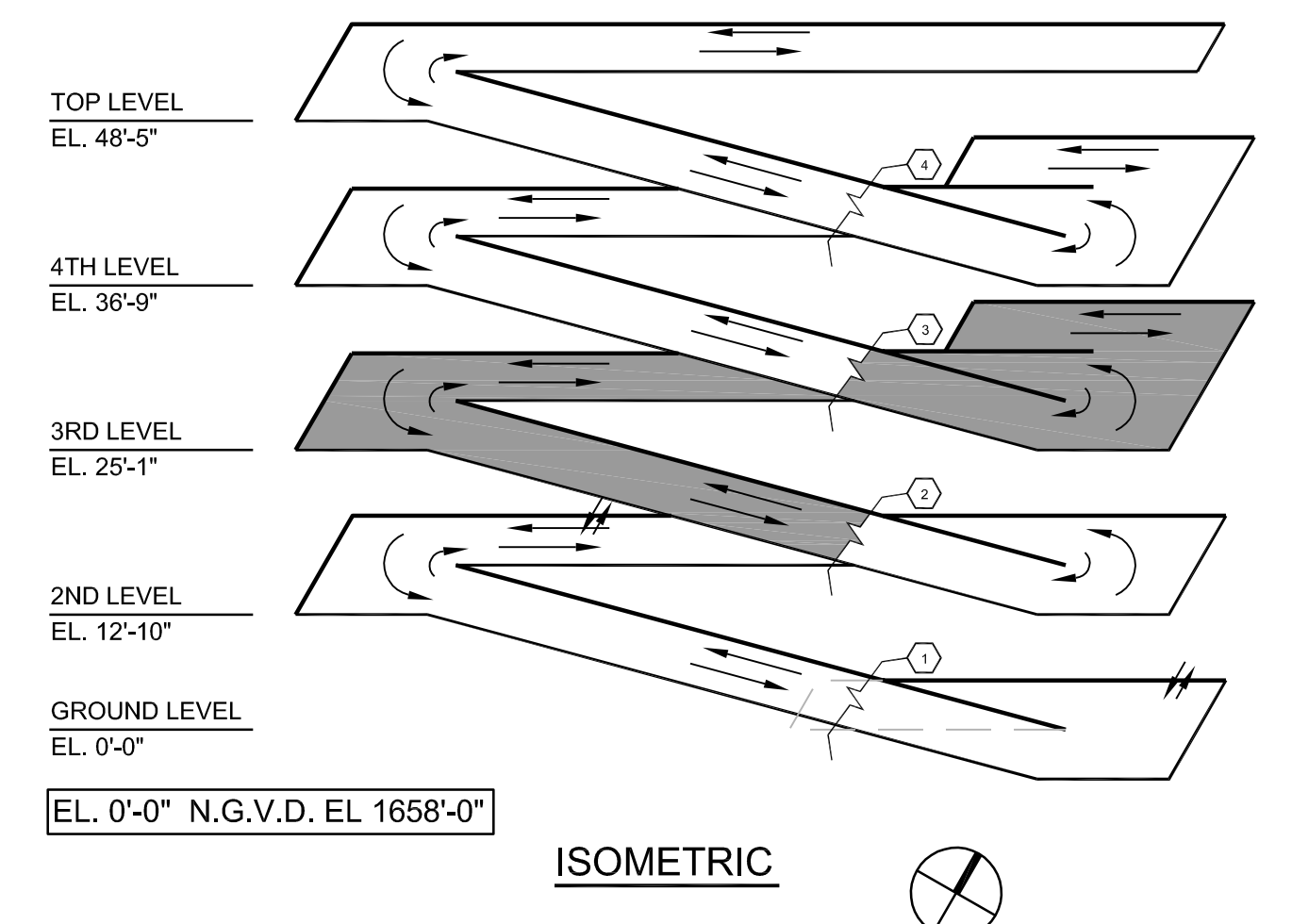
0 8' 16' 32'

1/16" = 1'-0"

- SHEET NOTES
1. FOR STRIPING DETAILS, SEE DWG. AG501.
 2. FOR STRIPING DIMENSIONS, SEE DWGS. AG101 THRU AG105.
 3. FOR GRAPHICS LOCATIONS AND TYPE, SEE DWGS. AG101 THRU AG105.
 4. FOR GRAPHICS SCHEDULE & DETAILS SEE DWG. AG601.
 5. FOR WALL SECTIONS, SEE A310 & A311
 6. FOR STAIR/ELEVATOR PLANS SEE DWGS. A410, A411, A412, A413 & A414.
 7. FOR EXTERIOR ELEVATIONS, SEE DWG. A201 & A202.
 8. FOR SPOT ELEVATIONS SEE STRUCTURAL DWGS.
 9. SEE CIVIL AND LANDSCAPE DRAWINGS FOR EXTERIOR LAYOUT.
 10. FOR FLOOR DRAINS, REFER TO MEP DWGS. FOR FINAL LOCATION
 11. INDICATES PLAN MATCH LINE.
 12. SEE S001 & S002 FOR ABBREVIATIONS.

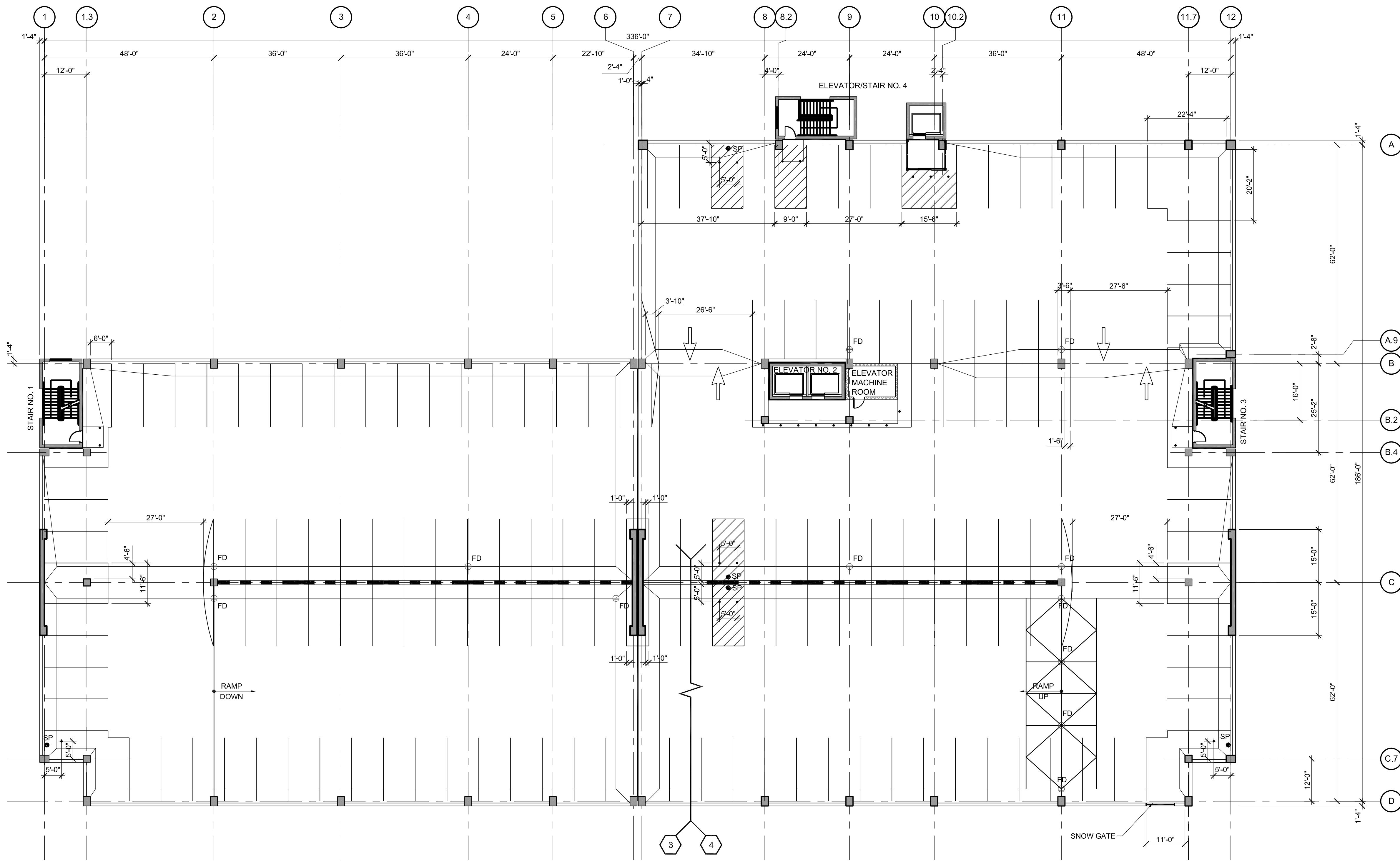


- PLAN LEGEND
- STEEL PIPE BOLLARD, SEE AG501 & ENLARGED
 - STAIR/ELEVATORS PLANS FOR TYPICAL LOCATIONS & DIMS, U.N.O.
 - 104 DOOR NUMBER, SEE DOOR SCHEDULE ON A431
 - FD FLOOR DRAIN, SEE PLUMBING DRAWINGS
 - CONCRETE MASONRY WALLS (CMU) SEE SPECS
 - SP FIRE STANDPIPE



FINAL CONSTRUCTION DRAWINGS
APPROVED FOR CONSTRUCTION

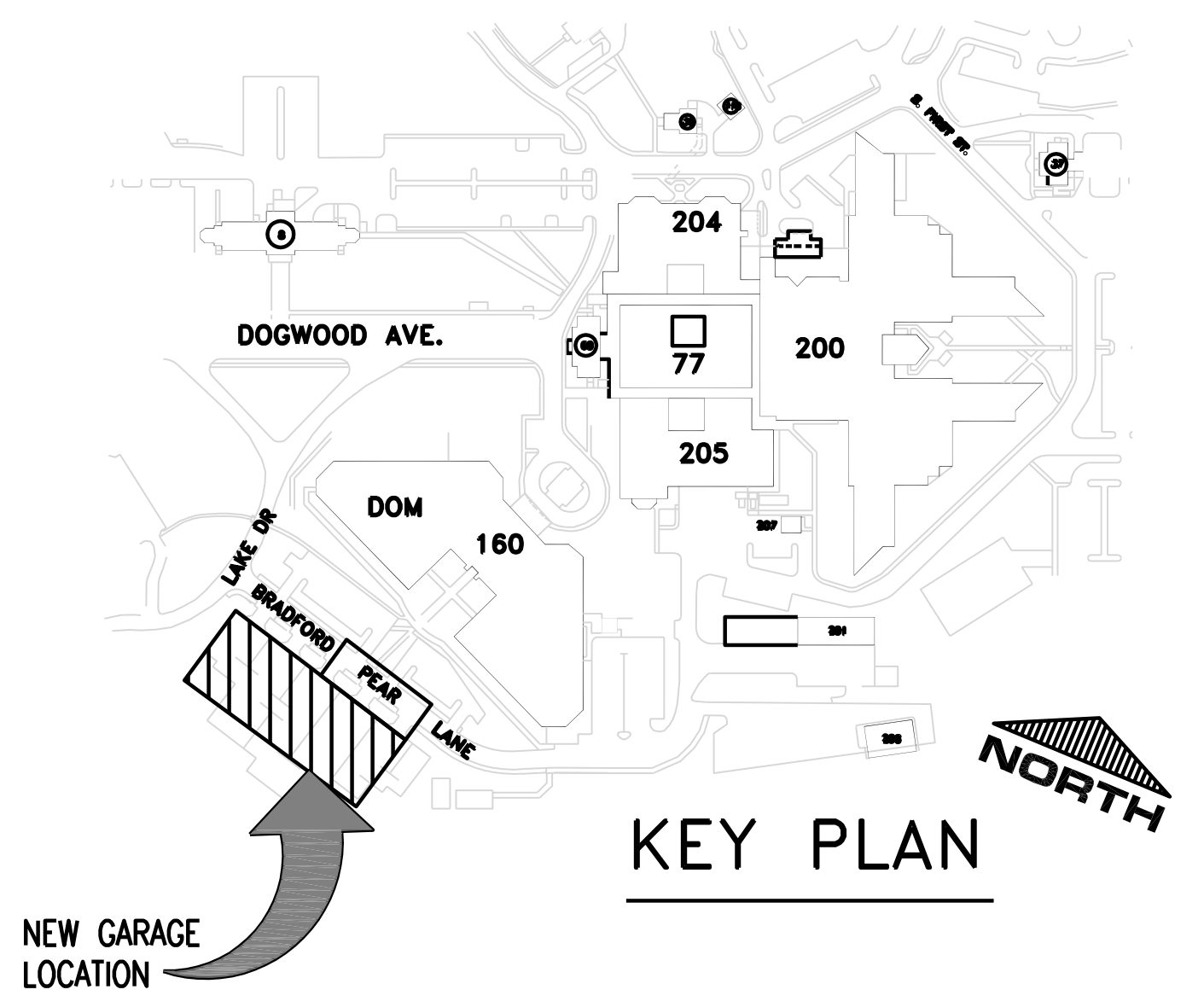
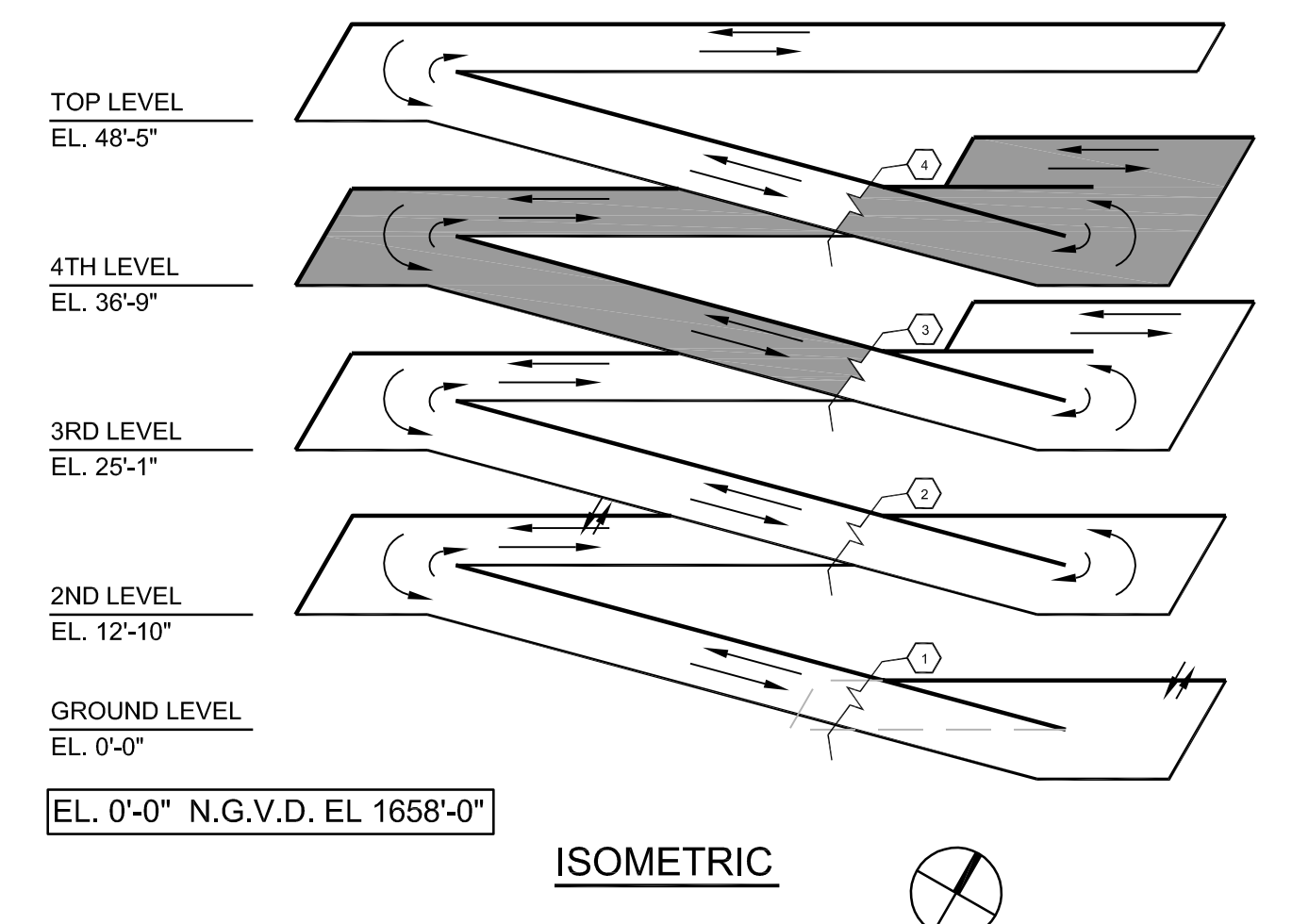
| | | | | | | | | | | | | | |
|---|--|---|--|---|--|---|--|--|--|--|--|---------------------------------------|--|
| Architect/Engineers: AKEA INC. 3603 NW 98TH ST., SUITE B GAINESVILLE, FLORIDA 32606 PH: (352) 474-6124 FAX: (352) 474-6324 CERT OF AUTH: FL #26693 EXPIRES: 02/28/2015 | | Consultants: WALKER PARKING CONSULTANTS 4904 Eisenhower Blvd Suite 150 Tampa, FL 33634 813.888.5800 Ph 813.888.5822 Fax BE-0003840 www.walkerparking.com TO THE BEST OF THE ENGINEER'S KNOWLEDGE, THE PLANS AND SPECIFICATIONS COMPLY WITH THE APPLICABLE MINIMUM BUILDING CODES AND THE APPLICABLE FIRE SAFETY STANDARD | | Approved: Asst. Chief, Engineering Service Engineering Bldg. Maint. Foreman Engineering Operation Foreman Engineering Health & Safety Engineering Planning & Analysis C.O.T.R. | | Drawing Title: 3RD LEVEL STRIPING PLAN Approved: Chief, Engineering Service Approved: Service Chief | | Project Title: CONSTRUCT 525 SPACE PARKING GARAGE CONTRACT No. VA249-14-C-0150 P.O. No. 621C40254 Building Number 160 Checked DCD Drawn MCB Location VAMC MOUNTAIN HOME, TENNESSEE | | Date: MARCH 26, 2015 Project No.: 621-330 DRAWING NO.: A103 Page 32 of 131 | | Department of Veterans Affairs | |
|---|--|---|--|---|--|---|--|--|--|--|--|---------------------------------------|--|



1 4TH LEVEL STRIPING PLAN

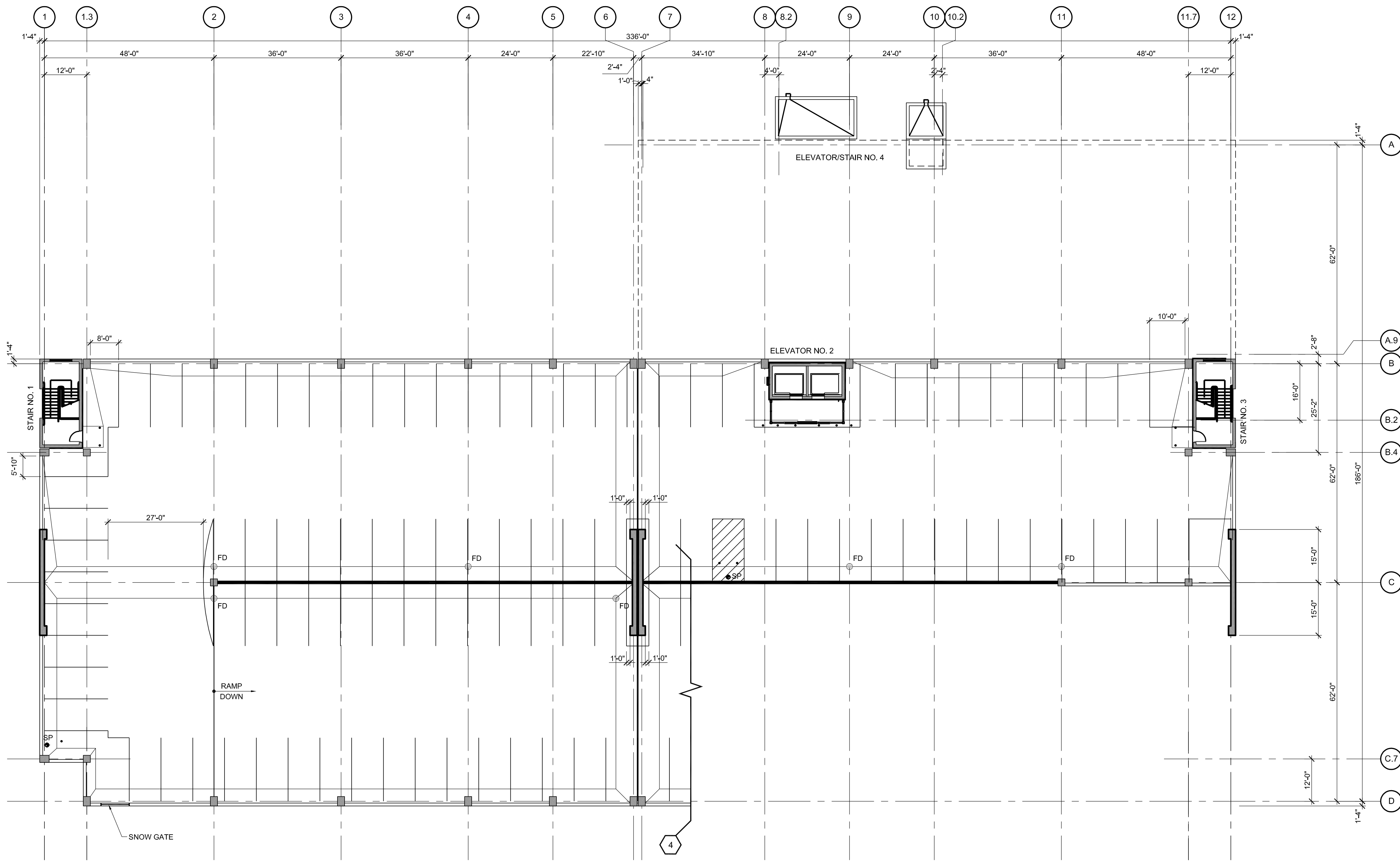
- SHEET NOTES
1. FOR STRIPING DETAILS, SEE DWG. AG501.
 2. FOR STRIPING DIMENSIONS, SEE DWGS. AG101 THRU AG105.
 3. FOR GRAPHICS LOCATIONS AND TYPE, SEE DWGS. AG101 THRU AG105.
 4. FOR GRAPHICS SCHEDULE & DETAILS SEE DWG. AG601.
 5. FOR WALL SECTIONS, SEE A310 & A311
 6. FOR STAIR/ELEVATOR PLANS SEE DWGS. A410, A411, A412, A413 & A414.
 7. FOR EXTERIOR ELEVATIONS, SEE DWG. A201 & A202.
 8. FOR SPOT ELEVATIONS SEE STRUCTURAL DWGS.
 9. SEE CIVIL AND LANDSCAPE DRAWINGS FOR EXTERIOR LAYOUT.
 10. FOR FLOOR DRAINS, REFER TO MEP DWGS. FOR FINAL LOCATION
 11. INDICATES PLAN MATCH LINE.
 12. SEE S001 & S002 FOR ABBREVIATIONS.

- PLAN LEGEND
- STEEL PIPE BOLLARD, SEE AG501 & ENLARGED
 - STAIR/ELEVATORS PLANS FOR TYPICAL LOCATIONS & DIMS. U.N.O.
 - 104 DOOR NUMBER, SEE DOOR SCHEDULE ON A431
 - FD FLOOR DRAIN, SEE PLUMBING DRAWINGS
 - CONCRETE MASONRY WALLS (CMU) SEE SPECS
 - SP FIRE STANDPIPE



FINAL CONSTRUCTION DRAWINGS
APPROVED FOR CONSTRUCTION

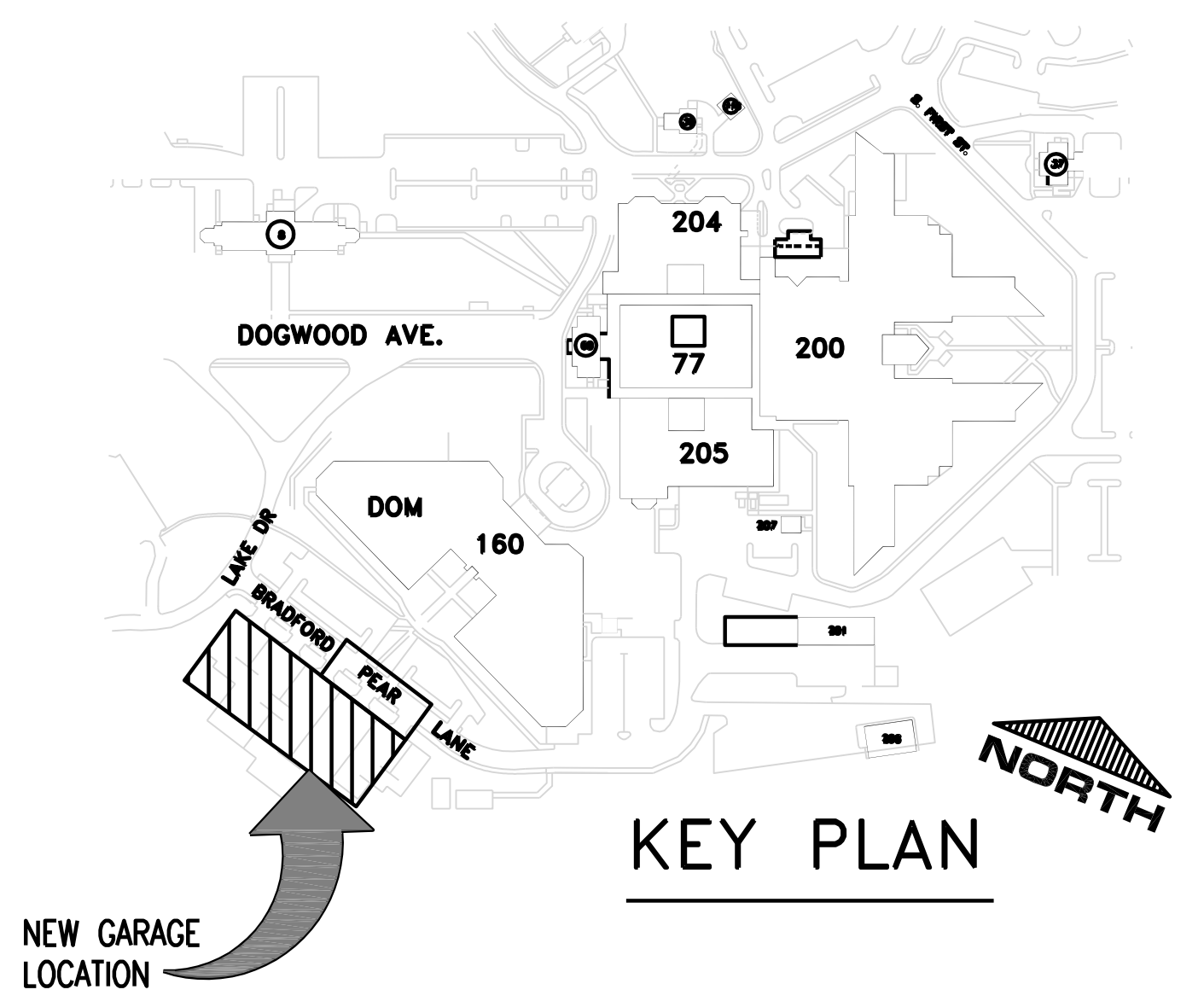
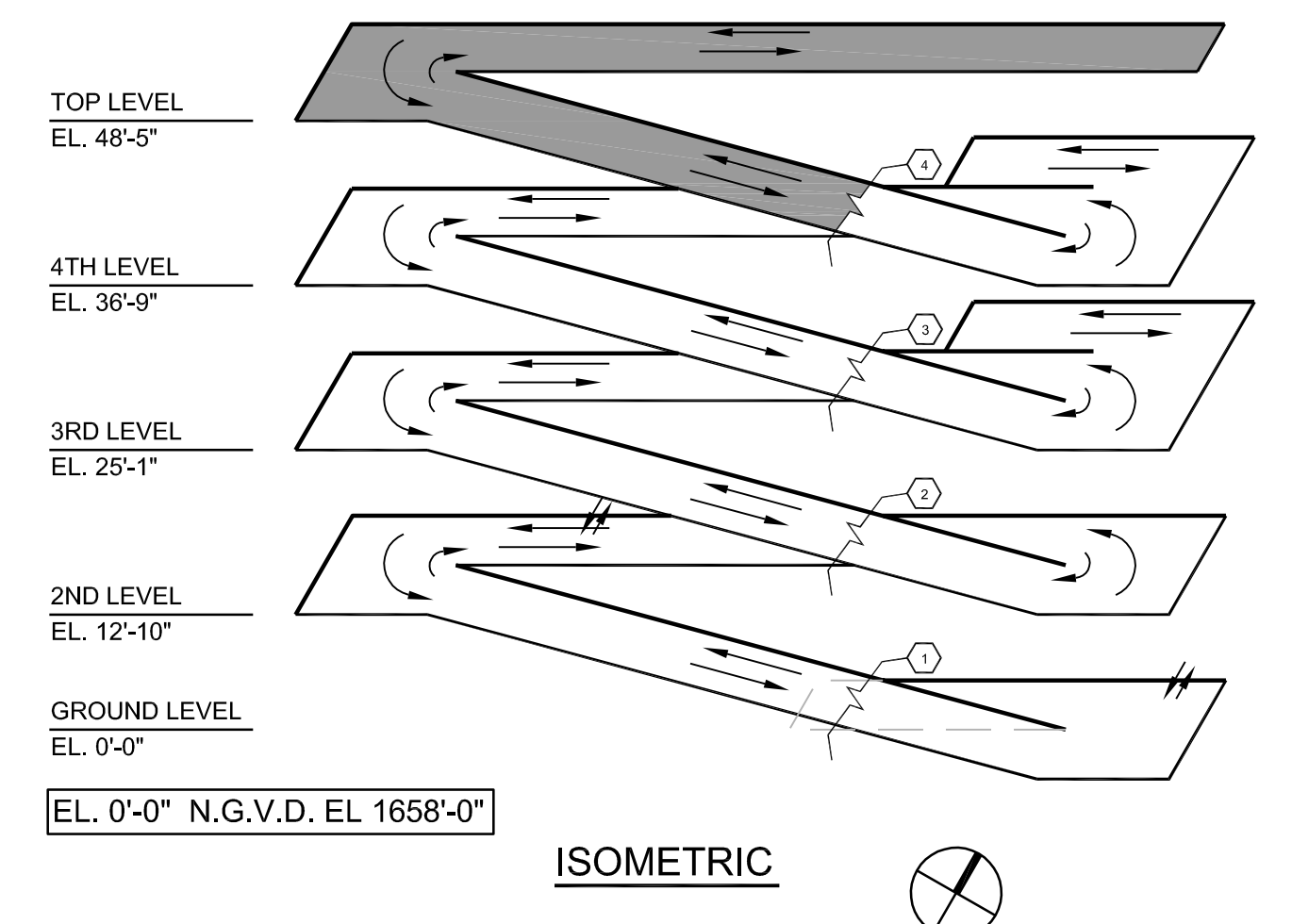
| | | | | | | | | | | | | |
|---|--|---|--|---|--|---|--|--|--|--|--|---------------------------------------|
| Architect/Engineers: AKEA INC. 3603 NW 98TH ST., SUITE B GAINESVILLE, FLORIDA 32606 PH: (352) 474-6124 FAX: (352) 474-6324 CERT OF AUTH: FL #26693 EXPIRES: 02/28/2015 | | Consultants: WALKER PARKING CONSULTANTS 4904 Eisenhower Blvd Suite 150 Tampa, FL 33634 813.888.5800 Ph 813.888.5822 Fax BE-0003840 www.walkerparking.com TO THE BEST OF THE ENGINEER'S KNOWLEDGE, THE PLANS AND SPECIFICATIONS COMPLY WITH THE APPLICABLE MINIMUM BUILDING CODES AND THE APPLICABLE FIRE SAFETY STANDARD | | Approved: Asst. Chief, Engineering Service Engineering Bldg. Maint. Foreman Engineering Operation Foreman Engineering Health & Safety Engineering Planning & Analysis C.O.T.R. | | Drawing Title: 4TH LEVEL STRIPING PLAN Approved: Chief, Engineering Service Approved: Service Chief | | Project Title: CONSTRUCT 525 SPACE PARKING GARAGE CONTRACT No. VA249-14-C-0150 P.O. No. 621C40254 Building Number 160 Checked DCD Drawn MCB Location VAMC MOUNTAIN HOME, TENNESSEE | | Date: MARCH 26, 2015 Project No.: 621-330 DRAWING NO.: A104 Page 33 of 131 | | Department of Veterans Affairs |
| Revisions | | Revisions | | Revisions | | Revisions | | Revisions | | Revisions | | |



1 TOP LEVEL STRIPING PLAN

- SHEET NOTES
1. FOR STRIPING DETAILS, SEE DWG. AG501.
 2. FOR STRIPING DIMENSIONS, SEE DWGS. AG101 THRU AG105.
 3. FOR GRAPHICS LOCATIONS AND TYPE, SEE DWGS. AG101 THRU AG105.
 4. FOR GRAPHICS SCHEDULE & DETAILS SEE DWG. AG601.
 5. FOR WALL SECTIONS, SEE A310 & A311
 6. FOR STAIR/ELEVATOR PLANS SEE DWGS. A410, A411, A412, A413 & A414.
 7. FOR EXTERIOR ELEVATIONS, SEE DWG. A201 & A202.
 8. FOR SPOT ELEVATIONS SEE STRUCTURAL DWGS.
 9. SEE CIVIL AND LANDSCAPE DRAWINGS FOR EXTERIOR LAYOUT.
 10. FOR FLOOR DRAINS, REFER TO MEP DWGS. FOR FINAL LOCATION
 11. INDICATES PLAN MATCH LINE.
 12. SEE S001 & S002 FOR ABBREVIATIONS.

- PLAN LEGEND
- STEEL PIPE BOLLARD, SEE AG501 & ENLARGED
 - STAIR/ELEVATORS PLANS FOR TYPICAL LOCATIONS & DIMS, U.N.O.
 - 104 DOOR NUMBER, SEE DOOR SCHEDULE ON A431
 - FD FLOOR DRAIN, SEE PLUMBING DRAWINGS
 - CONCRETE MASONRY WALLS (CMU) SEE SPECS
 - SP FIRE STANDPIPE



FINAL CONSTRUCTION DRAWINGS
APPROVED FOR CONSTRUCTION

| | | | | | | | | | | | | |
|---|--|--|--|---|--|--|--|---|--|---|--|---------------------------------------|
| Architect/Engineers: AKEA INC. 3603 NW 98TH ST., SUITE B GAINESVILLE, FLORIDA 32606 PH: (352) 474-6124 FAX: (352) 474-6324 CERT OF AUTH: FL #26693 EXPIRES: 02/28/2015 | | Consultants: WALKER PARKING CONSULTANTS 4904 Eisenhower Blvd Suite 150 Tampa, FL 33634 813.888.5800 Ph 813.888.5895 Fax BE-0003840 www.walkerparking.com | | Approved: Asst. Chief, Engineering Service Engineering Bldg. Maint. Foreman Engineering Operation Foreman Engineering Health & Safety Engineering Planning & Analysis C.O.T.R. | | Drawing Title: TOP LEVEL STRIPING PLAN | | Project Title: CONSTRUCT 525 SPACE PARKING GARAGE CONTRACT No. VA249-14-C-0150 P.O. No. 621C40254 | | Date: MARCH 26, 2015 Project No.: 621-330 DRAWING NO.: A105 Page 34 of 131 | | Department of Veterans Affairs |
| Revisions: | | WALKER PARKING CONSULTANTS | | | | Approved: Chief, Engineering Service | | Building Number: 160 Checked: DCD Drawn: MCB | | Location: VAMC MOUNTAIN HOME, TENNESSEE | | |