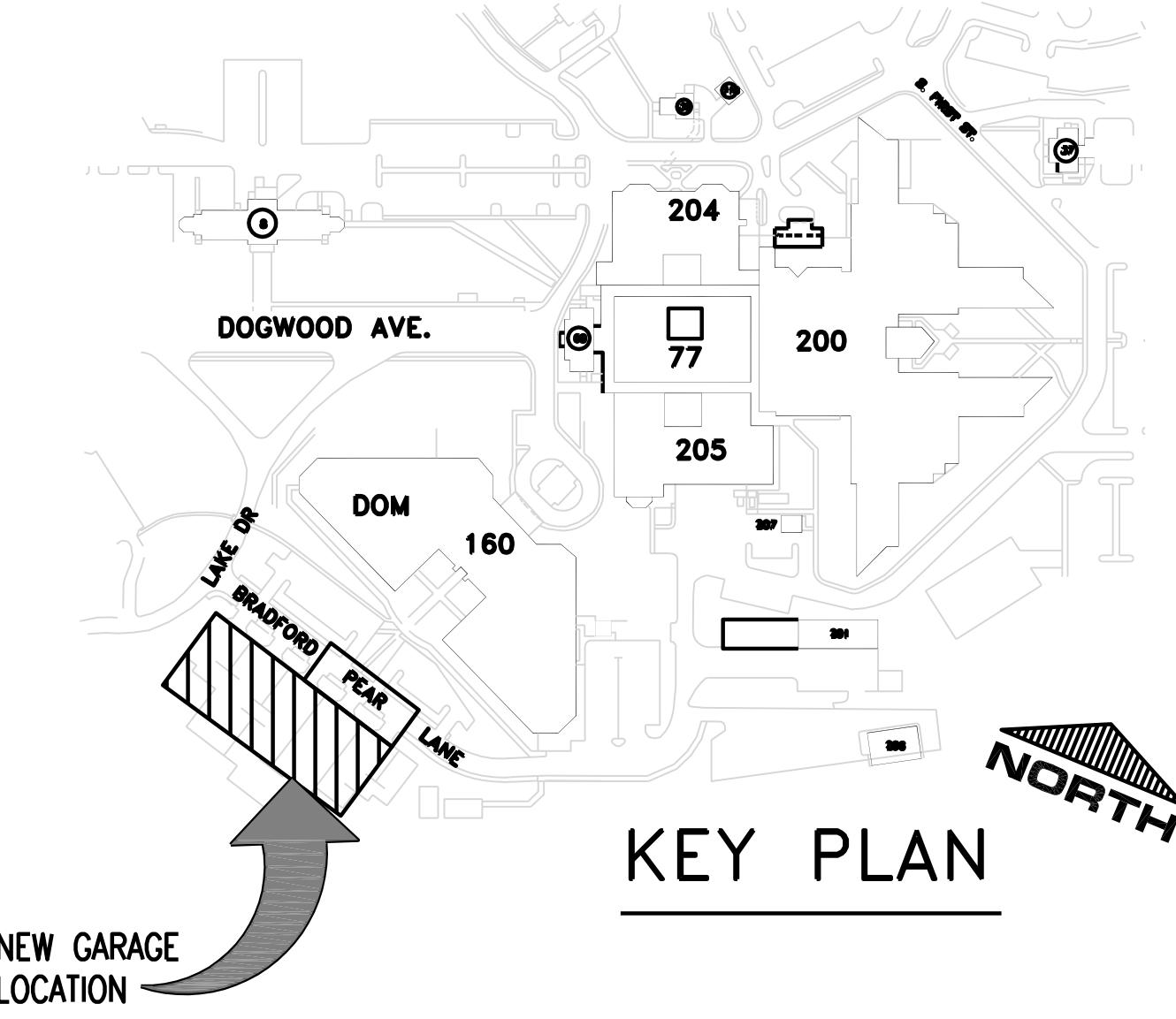
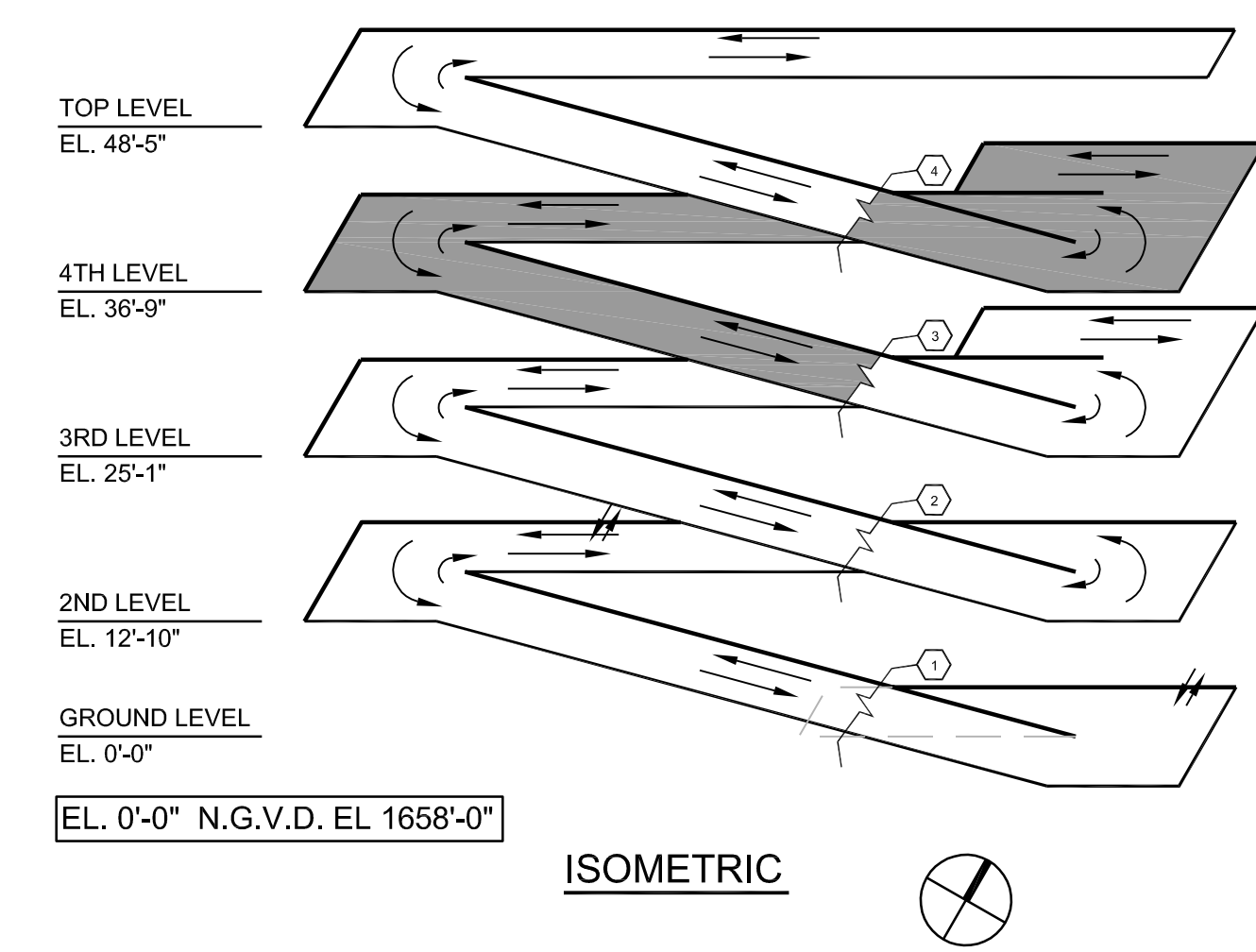


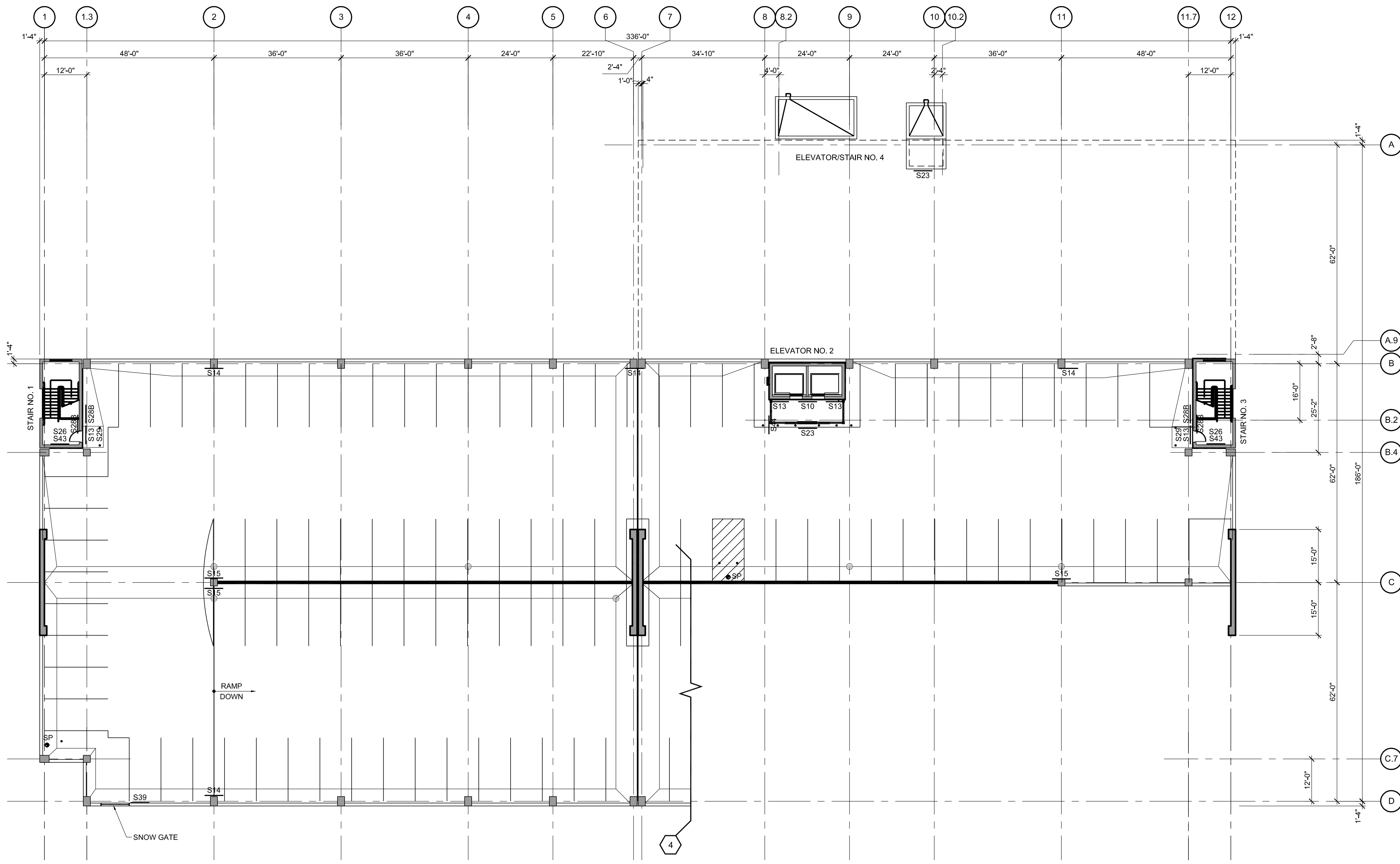
1 4TH LEVEL GRAPHICS PLAN

- SHEET NOTES
1. FOR STRIPING DETAILS, SEE DWG. AG501.
 2. FOR STRIPING DIMENSIONS, SEE DWGS. AG101 THRU AG105.
 3. FOR GRAPHICS LOCATIONS AND TYPE, SEE DWGS. AG101 THRU AG105.
 4. FOR GRAPHICS SCHEDULE & DETAILS SEE DWG. A601.



FINAL CONSTRUCTION DRAWINGS
APPROVED FOR CONSTRUCTION

Rev. File	ARCHITECT/ENGINEERS:	DENNIS C. DOUGLAS P.E. P.E. NO. 38455	CONSULTANTS:	Approved:	Drawing Title	Project Title	Date
	AKEA INC.		WALKER PARKING CONSULTANTS	Asst. Chief, Engineering Service	4TH LEVEL GRAPHICS PLAN	CONSTRUCT 525 SPACE PARKING GARAGE	MARCH 26, 2015
	3603 NW 98TH ST., SUITE B GAINESVILLE, FLORIDA 32606 PH: (352) 474-6124 FAX: (352) 474-6324 CERT OF AUTH: FL #26693 EXPIRES: 02/28/2015		4904 Eisenhower Blvd Suite 150 Tampa, FL 33634 813.888.5800 Ph 813.888.5822 Fax BE-0003840 www.walkerparking.com	Engineering Bldg. Maint. Foreman		CONTRACT No. VA249-14-C-0150 P.O. No. 621C40254	Project No. 621-330
			TO THE BEST OF THE ENGINEER'S KNOWLEDGE, THE PLANS AND SPECIFICATIONS COMPLY WITH THE APPLICABLE MINIMUM BUILDING CODES AND THE APPLICABLE FIRE SAFETY STANDARD	Engineering Operation Foreman	Approved: Chief, Engineering Service	Building Number 160	DRAWING NO. AG104
				Engineering Health & Safety	Approved: Service Chief	Checked DCD	Date MARCH 26, 2015
				Engineering Planning & Analysis		Drawn MCB	Page 49 of 131
				C.O.T.R.		Location VAMC MOUNTAIN HOME, TENNESSEE	

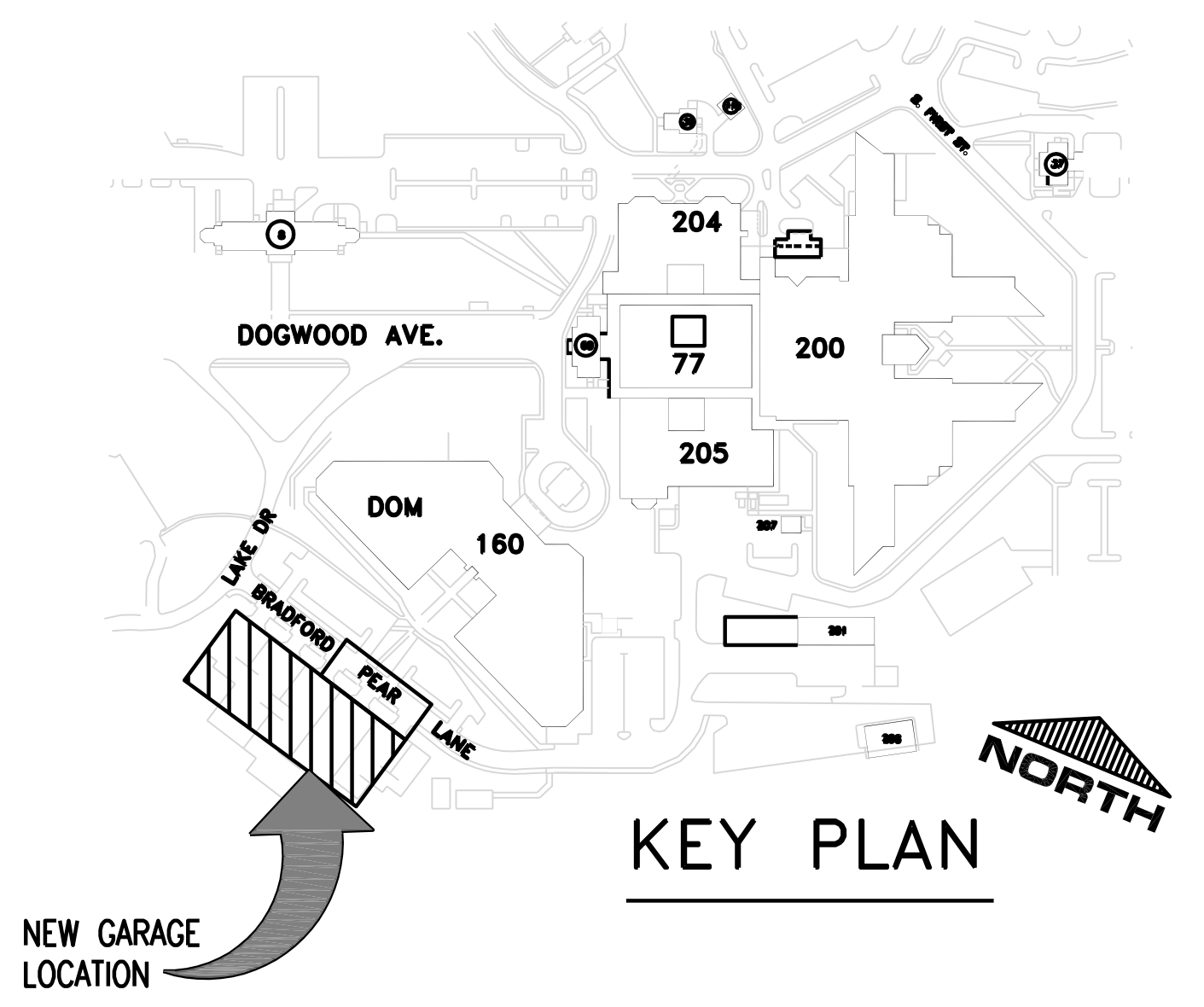
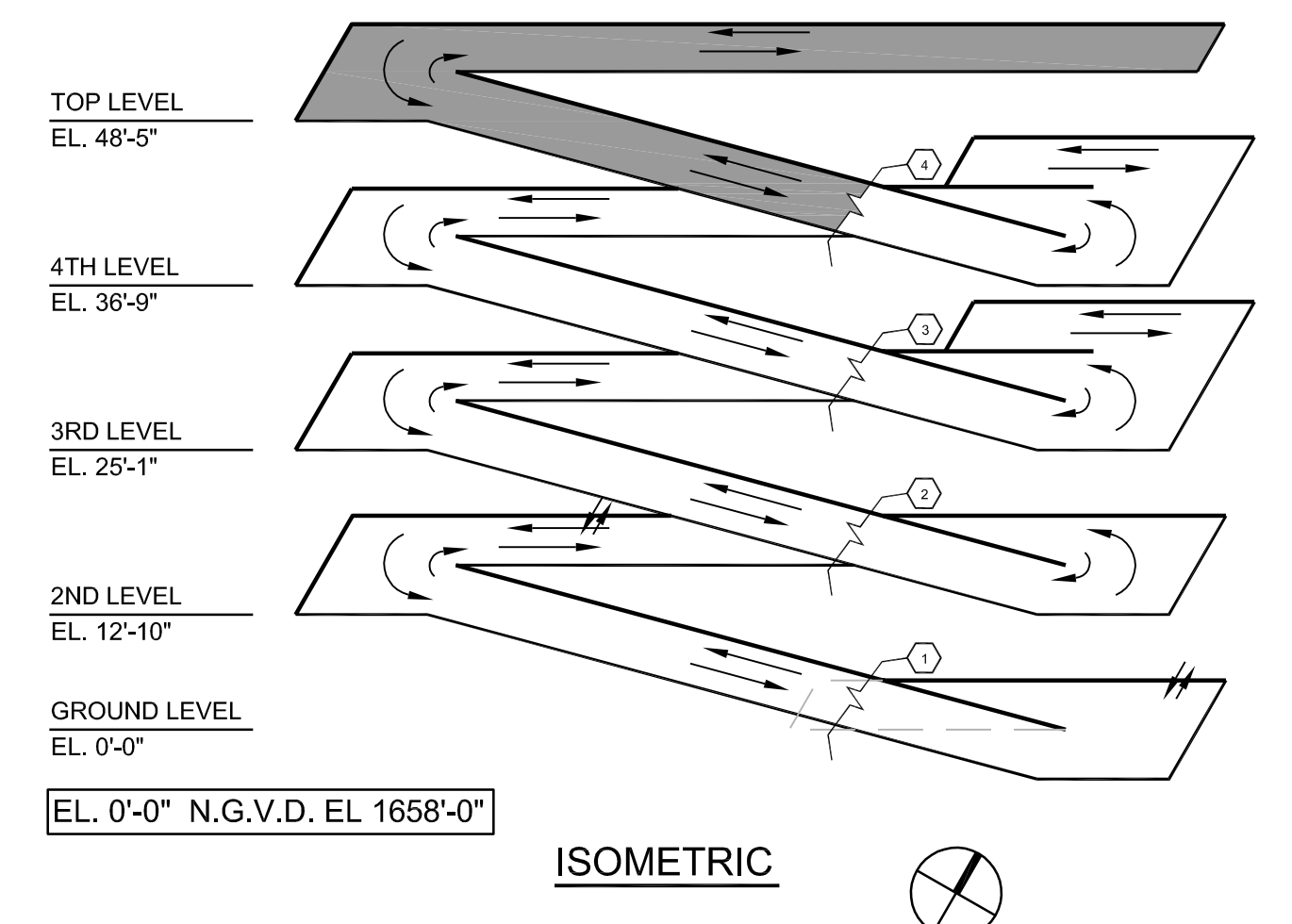
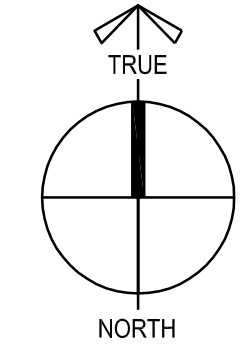


1 TOP LEVEL STRIPING PLAN

0 8' 16' 32'

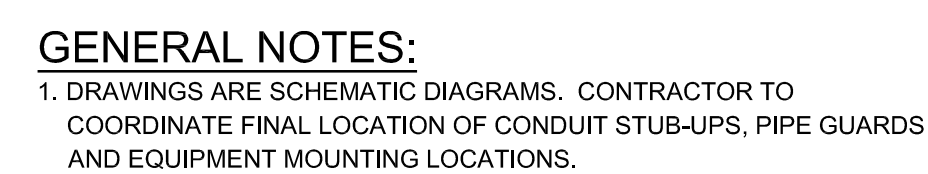
1/16" = 1'-0"

- SHEET NOTES**
1. FOR STRIPING DETAILS, SEE DWG. AG501.
 2. FOR STRIPING DIMENSIONS, SEE DWGS. AG101 THRU AG105.
 3. FOR GRAPHICS LOCATIONS AND TYPE, SEE DWGS. AG101 THRU AG105.
 4. FOR GRAPHICS SCHEDULE & DETAILS SEE DWG. A601.



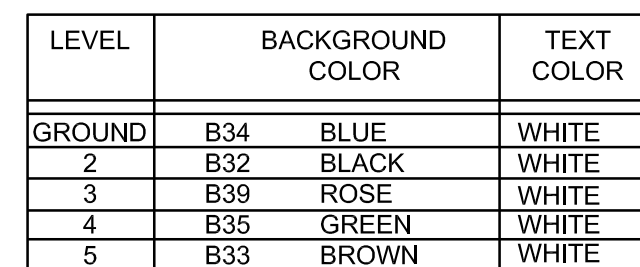
FINAL CONSTRUCTION DRAWINGS
APPROVED FOR CONSTRUCTION

<p>Dep. File</p> <p>Revisions</p> <p>Date</p>	<p>ARCHITECT/ENGINEERS:</p> <p>AKEA INC.</p> <p>3603 NW 98TH ST., SUITE B GAINESVILLE, FLORIDA 32606 PH: (352) 474-6124 FAX: (352) 474-6324 CERT OF AUTH: FL #26693 EXPIRES: 02/28/2015</p>	<p>DENNIS C. DOUGLAS P.E. P.E. NO. 38455</p> <p>WALKER PARKING CONSULTANTS</p>	<p>CONSULTANTS:</p> <p>WALKER PARKING CONSULTANTS</p> <p>4904 Eisenhower Blvd Suite 150 Tampa, FL 33634 813.888.5800 Ph 813.888.5822 Fax BE-0003840 www.walkerparking.com</p> <p>TO THE BEST OF THE ENGINEER'S KNOWLEDGE, THE PLANS AND SPECIFICATIONS COMPLY WITH THE APPLICABLE MINIMUM BUILDING CODES AND THE APPLICABLE FIRE SAFETY STANDARD</p>	<p>Approved:</p> <p>Asst. Chief, Engineering Service</p> <p>Engineering Bldg. Maint. Foreman</p> <p>Engineering Operation Foreman</p> <p>Engineering Health & Safety</p> <p>Engineering Planning & Analysis</p> <p>C.O.T.R.</p>	<p>Drawing Title</p> <p>TOP LEVEL GRAPHICS PLAN</p> <p>Approved: Chief, Engineering Service</p> <p>Approved: Service Chief</p>	<p>Project Title</p> <p>CONSTRUCT 525 SPACE PARKING GARAGE</p> <p>CONTRACT No. VA249-14-C-0150 P.O. No. 821C40254</p> <p>Building Number 160</p> <p>Checked DCD</p> <p>Drawn MCB</p> <p>Location VAMC MOUNTAIN HOME, TENNESSEE</p>	<p>Date MARCH 26, 2015</p> <p>Project No. 621-330</p> <p>DRAWING NO. AG105</p> <p>Page 50 of 131</p>	<p>Department of Veterans Affairs</p>
---	---	--	--	--	---	---	--	---------------------------------------



VA FORM 08-6231, DEC 1989

one-eighth inch = one foot
 one-quarter inch = one foot
 three-eighths inch = one foot
 one-half inch = one foot
 three-quarters inch = one foot
 one inch = one foot
 one and one-half inches = one foot
 three inches = one foot



STAIR NO. 1
ROOF ACCESS

3

↓ EXIT DOWN
TO LEVEL 1

OR STAIR NO. 3 OR
STAIR NO. 4

SIGN TO INDICATE
LEVEL NUMBER
2 - 5

EXIT DOWN TO
LEVEL 2.5
@ STAIR NO. 1

STAIR NO. 3
ROOF ACCESS

★ 1

EXIT
THIS LEVEL

OR STAIR NO. 4

STAIR NO. 1
ROOF ACCESS

2

↑ EXIT UP TO
LEVEL 2.5

A diagram of a rectangular yellow sign with a black border. The sign is divided into two horizontal sections. The top section contains the word "CAUTION" in large, bold, black capital letters. The bottom section contains the text "Low Wall When Gate is Open" in smaller black capital letters. Dimensions are indicated: the overall width is 24 inches, the overall height is 18 inches, the top section is 2 inches high, and the bottom section is 4 inches high. A 2-inch text size is indicated for the bottom section. The sign is labeled "YELLOW" and "WHITE" for the background and text colors respectively. The code "S39" is at the bottom.

S39

NOTICE

Stair Live Load
Capacity 100 psf

NOTICE
Lobby Live Load
Capacity 100 psf

S44



1. LETTERFORMS SHALL BE HELVETICA MEDIUM, PER VA ADMINISTRATION STANDARDS. UPPER AND LOWER CASE SHALL BE USED ON ALL DIRECTIONAL TRAFFIC AND PEDESTRIAN SIGNS, UNLESS NOTED. HELVETICA CONDENSED MEDIUM FOR ALL OVERHEAD SIGNS.
2. SIGN CONTRACTOR SHALL REVIEW SIGN LOCATIONS PRIOR TO INSTALLATION WITH ENGINEER TO COORDINATE WITH LIGHTING SYSTEM, SIGN AND LIGHT LOCATIONS PER SPECIFICATIONS.
3. SIGNS SHALL BE MOUNTED LEVEL AND PLUMB, UNLESS NOTED.
4. WHERE TWO (2) SIGNS ARE MOUNTED BACK TO BACK, SMALLEST L DIMENSION SHALL INCREASE TO MATCH LARGEST L DIMENSION.
5. MAXIMUM BOLT INSERT EMBEDMENT LENGTH 1-1/4" INTO CONCRETE STRUCTURE, UNLESS NOTED.
6. DO NOT SCALE DRAWINGS.
7. BACKS AND EDGES OF ALL ALUMINUM SIGNS MOUNTED DIRECTLY TO STRUCTURE SHALL BE PAINTED WHITE TO PREVENT CATHODIC REACTION.
8. SEE AG101 THRU AG104 PLANS FOR PARKING LAYOUT AND SIGN LOCATIONS.
9. ILLUMINATED SIGNS TO BE U.L. LISTED OR APPROVED EQUIVALENT.
10. REFLECTIVE GRAPHICS AND COPY COLORS ARE 3M. ALL NON-REFLECTIVE COLORS ARE PANTONE OR EQUAL TO SHERRIN WILLIAM.
11. SEE DEPARTMENT OF VETERANS AFFAIRS SIGNAGE DESIGN GUIDE, PG-18-12 FOR ADDITIONAL INFORMATION INCLUDING SIGN TYPE, SIZE, COLORS AND MOUNTING DETAILS NOTED IN SCHEDULE ABOVE.
12. HANG SIGN FROM OUTSIDE FACE OF BEAM.
13. HEIGHT OF SIGNS AS INDICATED IS TO THE BOTTOM OF THE SIGN.
14. ELECTRIC CAR COUNT SYSTEM w/TOTAL AVAILABLE SPACES SHOWN ON MAIN PANEL @ GARAGE ENTRANCES. *RED STRIP: PARKING COUNT SYSTEM BY TRANSCENT OR APPROVED EQUAL. SEE SPECIFICATIONS.

VA FORM 08-5231, DEC 1989