

PIPING SYMBOLS	
PIPING SYMBOL	DESCRIPTION
	HIGH PRESSURE STEAM (60 PSIG AND ABOVE)
	HIGH PRESSURE STEAM CONDENSATE RETURN
	MEDIUM PRESSURE STEAM (16 PSIG THRU 59 PSIG)
	MEDIUM PRESSURE STEAM CONDENSATE RETURN
	LOW PRESSURE STEAM (15 PSIG AND BELOW)
	LOW PRESSURE STEAM CONDENSATE RETURN
	CONDENSATE PUMP DISCHARGE
	HOT WATER HEATING SUPPLY
	HOT WATER HEATING RETURN
	GLYCOL-WATER HEATING SUPPLY
	GLYCOL-WATER HEATING RETURN
	SOLAR WATER SUPPLY
	SOLAR WATER RETURN
	REFRIGERANT LIQUID
	REFRIGERANT SUCTION
	REFRIGERANT HOT GAS
	CONDENSER WATER SUPPLY (FROM TOWER)
	CONDENSER WATER RETURN (TO TOWER)
	CHILLED WATER SUPPLY
	CHILLED WATER RETURN
	CHILLED GLYCOL-WATER SUPPLY
	CHILLED GLYCOL-WATER RETURN
	MAKE-UP WATER
	DRAIN LINE
	VENT LINE
	GLYCOL-WATER RUN AROUND SUPPLY
	GLYCOL-WATER RUN AROUND RETURN
	EXISTING PIPE TO BE REMOVED
	FEEDWATER PUMP DISCHARGE
	FEEDWATER PUMP SUCTION
	CONDENSATE TRANSFER PUMP DISCHARGE
	CONDENSATE TRANSFER PUMP SUCTION
	VACUUM CONDENSATE RETURN
	TUBE CLEANER WATER SUPPLY
	BOILER BLOWOFF
	CONTINUOUS BLOWDOWN
	BOILER WATER SAMPLE
	FEEDWATER SAMPLE (FROM DEAERATOR)
	CHEMICAL FEED
	OVERFLOW
	COMPRESSED AIR
	NATURAL GAS MAIN FUEL
	NATURAL GAS IGNITER FUEL
	LIQUEFIED PETROLEUM GAS IGNITER FUEL
	FUEL OIL SUPPLY
	FUEL OIL RETURN
	COLD WATER (CITY WATER)
	SOFTENED WATER
	HOT WATER
	ROLLER-TYPE HANGER
	VARIABLE SPRING-TYPE HANGER (TYPE 51)*
	SPRING CUSHION-TYPE HANGER (TYPE 48 OR 49)*
	CLEVIS-TYPE HANGER
	TRAPEZE HANGER (PROVIDE U-BOLT PIPE ATTACHMENT TO TRAPEZE EXCEPT WHERE RH ARE INDICATED)
	FLOOR-SUPPORTED PIPE STAND
	RISER CLAMP (TYPE 42)*
	WALL BRACKET (TYPE 31, 32, 33)*
	CONSTANT SUPPORT HANGER (TYPE 54, 55, 56)*
	SLIDING SUPPORTS (TYPE 35)*
NOTE : NOT ALL SYMBOLS SHOWN APPLY	
* TYPE NUMBERS REFER TO MANUFACTURER'S STANDARDIZATION SOCIETY STANDARD PRACTICE SP-58	

GENERAL PIPING SYMBOLS	
PIPING SYMBOL	DESCRIPTION
	DIRECTION OF PIPE PITCH (DOWN)
	DIRECTION OF FLOW
	ANCHOR
	REDUCER OR INCREASER
	ECCENTRIC REDUCER
	TOP CONNECTION, 45° OR 90°
	BOTTOM CONNECTION, 45° OR 90°
	SIDE CONNECTION
	CAPPED OUTLET
	RISE OR DROP IN PIPE
	UNION
	PIPE UP
	PIPE DOWN
	INVERTED BUCKET TRAP SET INCLUDING PIPING ACCESSORIES SEE DETAIL
	FLOAT & THERMOSTATIC TRAP SET INCLUDING PIPING ACCESSORIES SEE DETAIL
	THERMOSTATIC TRAP SET INCLUDING PIPING ACCESSORIES SEE DETAIL
	THERMOMETER
	PRESSURE GAGE
	FLOW ELEMENT
	REFRIGERANT SIGHT GLASS
	TEST PLUG (PRESSURE/TEMPERATURE)
	AUTOMATIC AIR VENT
	MANUAL AIR VENT
	QUICK-COUPLE HOSE CONNECTOR
NOTE : NOT ALL SYMBOLS SHOWN APPLY	

VALVE SYMBOLS	
VALVE SYMBOL	DESCRIPTION
	GATE VALVE - THREADED/FLANGED
	GLOBE VALVE - THREADED/FLANGED
	GATE VALVE WITH 3/4" HOSE ADAPTER
	CHECK VALVE
	WYE STRAINER (WITH BALL VALVE & HOSE CONNECTION)
	WYE STRAINER WITH VALVED DRAIN AND QUICK-COUPLE HOSE CONNECTOR
	FLEXIBLE CONNECTION
	ANGLE GLOBE VALVE
	BUTTERFLY VALVE
	BALL VALVE
	MODULATING CONTROL VALVE
	MODULATING CONTROL BUTTERFLY VALVE
	TWO POSITION CONTROL VALVE
	THREE-WAY MODULATING CONTROL VALVE
	THREE-WAY TWO POSITION CONTROL VALVE
	PRESSURE REGULATING VALVE
	PRESSURE SAFETY VALVE
	AUTOMATIC BALANCING CONTROL VALVE
	WATER BALANCE DEVICE
	CIRCUIT SETTER VALVE
	GATE VALVE WITH GLOBE-VALVED BYPASS
	PLUG VALVE
	CONTROL VALVE (CV) - FLOAT-OPERATED
	PRESSURE REDUCING VALVE (PRV)
	WATER LEVEL CONTROLLER
	FLOW METER
NOTE : NOT ALL SYMBOLS SHOWN APPLY	

FINAL CONSTRUCTION DRAWINGS
APPROVED FOR CONSTRUCTION

Dwg. File	ARCHITECT/ENGINEERS:	Stephen T. Stoffe, PE Florida Reg. 70349	CONSULTANTS:	Approved:	Drawing Title	Project Title	Date		
	AKEA INC. 3603 NW 98TH ST., SUITE B GAINESVILLE, FLORIDA 32606 PH: (352) 474-6124 FAX: (352) 474-6324 CERT OF AUTH: FL #26693 EXPIRES: 02/28/2017	AKEA, INC.	WALKER PARKING CONSULTANTS 4904 Eisenhower Blvd Suite 150 Tampa, FL 33634 813.888.5800 Ph 813.888.5822 Fax BE-0003840 www.walkerparking.com	Asst. Chief, Engineering Service Engineering Bldg. Maint. Foreman Engineering Operation Foreman Engineering Health & Safety Engineering Planning & Analysis C.O.T.R.	PIPING AND VALVE SYMBOLS	CONSTRUCT 525 SPACE PARKING GARAGE	MARCH 26, 2015		
						CONTRACT No. VA249-14-C-0150	P.O. No. 621C40254	Project No.	
						Building Number	Checked	Drawn	621-330
						160	STS	CRR	
						Approved: Chief, Engineering Service			DRAWING NO.
Revisions	Approved: Service Chief					M002	Page 81 of 131		
Date						Location			
						VAMC MOUNTAIN HOME, TENNESSEE			

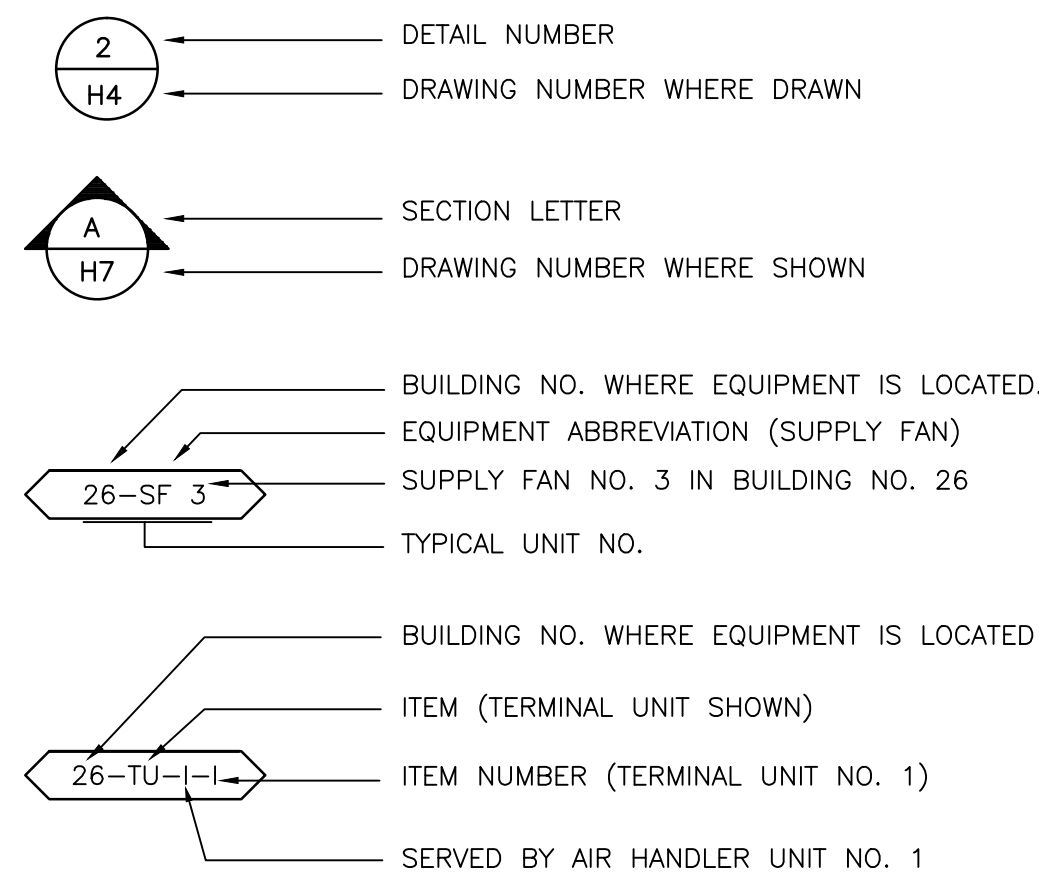
VA FORM 08-6231, DEC 1989

Department of Veterans Affairs

ABBREVIATIONS (NOT ALL APPLY)

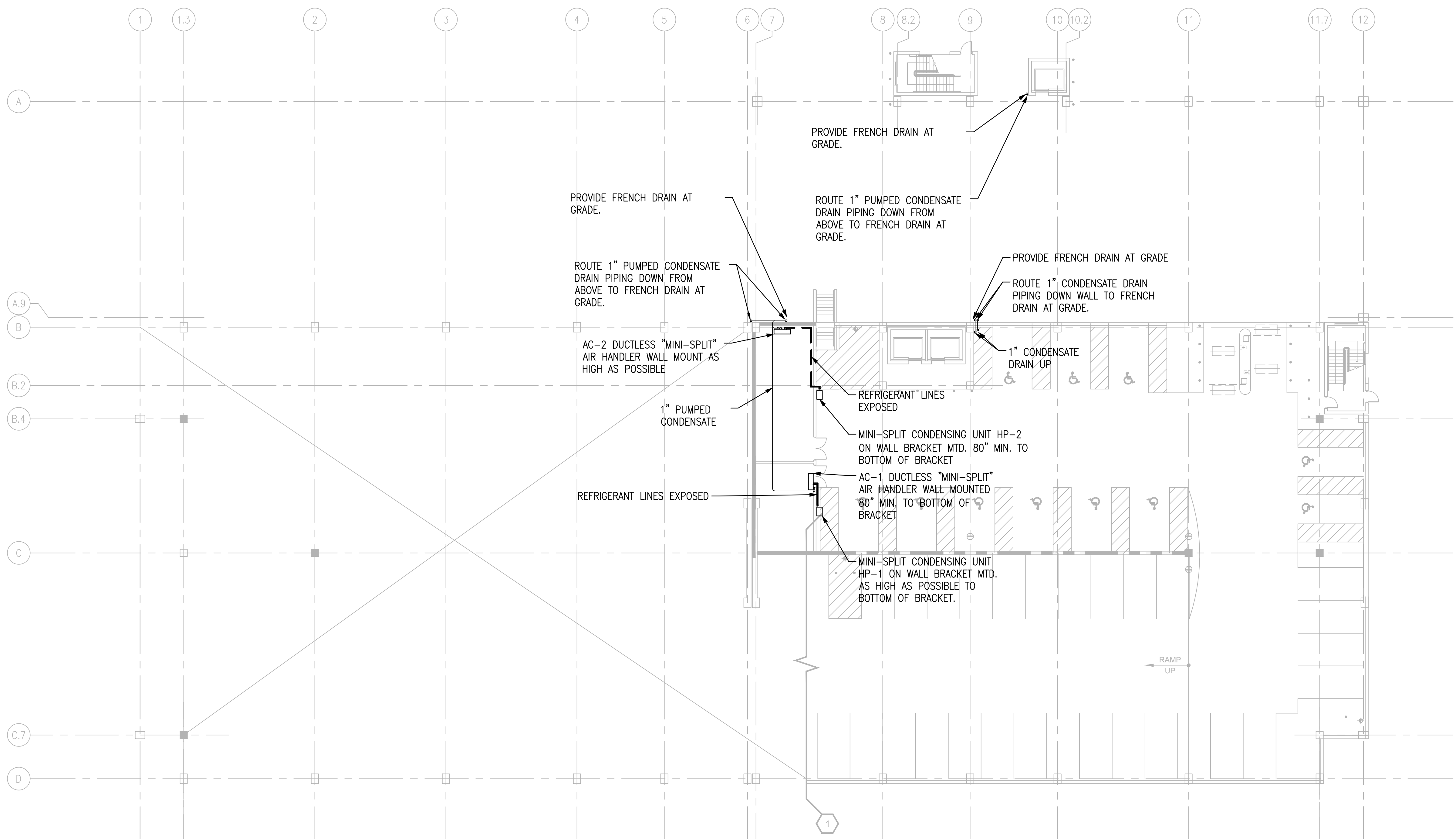
A/E AAHX AB AAV ACC ACCH ACCU ACU ACD ACD-TP AD AF AFCV AFF AFMD AFW AHU AMP AP APD ARI AS ASME AW AXF B BD BDD BDR BFP BFT BG BHP BHW BHX BIW BMT BR BSC BT BTC BTU BTUH BWT C CC CCD CD CD-1 CD-2 CENT CFH CFM CFM CFT CFP CG CH CHP CHW CHR CHS CI CM CM CM/S CO CO2 COMP COP CP CR CS CSG CT CU CUH CV CW CWCC CWP CWR CWS D D-1 D-2 D-3 DB DD-1 DD-2 DD-3 DEC DF DIA DIW DP DP DPA DPS DX DXCC	ARCHITECT / ENGINEER AIR TO AIR HEAT EXCHANGER AIR BLENDER AUTOMATIC AIR VENT AIR COOLED CONDENSER AIR COOLED CHILLER AIR-COOLED CONDENSING UNIT AIR CONDITIONING UNIT AUTOMATIC CONTROL DAMPER,MODULATING AUTOMATIC CONTROL DAMPER,TWO POSITION ACCESS DOOR AFTER FILTER AIR FLOW CONTROL VALVE ABOVE FINISHED FLOOR AIR FLOW MEASURING DEVICE AIR FOIL WHEEL (FAN) AIR-HANDLING UNIT AMPERGE ACCESS PANEL AIR PRESSURE DROP AIR CONDITIONING AND REFRIGERATION INSTITUTE AIR SEPARATOR AMERICAN SOCIETY OF MECHANICAL ENGINEERS AIR WASHER AXIAL FLOW BOILER BUTTERFLY DAMPER BACKDRAFT DAMPER BASE BOARD RADIATOR BACKFLOW PREVENTER BOILER PLANT FIRE TUBE BOTTOM GRILLE BRAKE HORSEPOWER HOT WATER HEATING BOILER BOILER BLOWDOWN HEAT EXCHANGER BACKWARD INCLINED WHEEL (FAN) BONE MARROW TRANSPLANT BOTTOM REGISTER BIOLOGICAL SAFETY CABINETS BLOWOFF TANK BLOWOFF TANK CONTROL VALVE BRITISH THERMAL UNIT BRITISH THERMAL UNIT PER HOUR BOILER PLANT WATER TUBE CENTIGRADE (CELCIUS) COOLING COIL COOLING COIL CONDENSATE DRAIN CEILING DIFFUSER CONSTRUCTION DOCUMENTS (SUBMISSION1) CONSTRUCTION DOCUMENTS (SUBMISSION2) CUBIC FEET PER HOUR CUBIC FEET PER MINUTE CUBIC FEET CHEMICAL FEED PUMP CEILING GRILLE CHILLER CHILLED WATER PUMP CHILLER WATER CHILLER WATER CHILLED WATER RETURN CHILLED WATER SUPPLY CAST IRON CARBON MONOXIDE CUBIC METER CUBIC METER PER SECOND CLEAN OUT CARBON DIOXIDE COMPRESSOR UNIT COEFFICIENT OF PERFORMANCE CONDENSATE PUMP CEILING REGISTER CONDENSATE STORAGE TANK CLEAN STEAM GENERATOR COOLING TOWER CONDENSING UNIT CABINET UNIT HEATER CONSTANT VOLUME COLD WATER (POTABLE) CHILLED WATER COOLING COIL CONDENSER WATER PUMP CONDENSER WATER RETURN (TO COOLING TOWER) CONDENSER WATER SUPPLY (FROM COOLING TOWER) DAMPER - AUTOMATIC OUTDOOR AIR DAMPER RETURN AIR DAMPER RELIEF AIR DAMPER DECIBELS DRY-BULB TEMPERATURE DESIGN DEVELOPMENT (SUBMISSION1) DESIGN DEVELOPMENT (SUBMISSION2) DIRECT DIGITAL CONTROLS DDC DEGREE DIFFUSER DEIONIZED WATER DEW POINT TEMPERATURE DIFFUSER PLATE DIFFERENTIAL PRESSURE ASSEMBLY DIFFERENTIAL PRESSURE SENSOR DIRECT EXPANSION DIRECT EXPANSION COOLING COIL	EA EAT EC ECC ECU EDH EER EF EG EGG EGT EGH EJ EMD ENT ER ERC ERP ESP ET ETO EUH EWC EWT EX F F&T F/SDPR FA FC FCU FCUC FCUH FCW FD FF FHX FM FOP FOT FOHX FPM FPS FPTU FR FRP FS FSTAT	EXHAUST AIR ENTERING AIR TEMPERATURE EVAPORATIVE COOLER ENGINEERING CONTROL CENTER EVAPORATIVE CONDENSER UNIT ELECTRIC DUCT HEATER ENERGY EFFICIENCY RATIO EXHAUST FAN EXHAUST GRILLE EMERGENCY GAS SHUTOFF ENTERING GLYCOL TEMPERATURE EXHAUST HOOD EXPANSION JOINT END OF MAIN DRIP (STEAM) ENTERING EXHAUST REGISTER ELECTRIC REHEAT COIL ELECTRIC RADIANT PANEL EXTERNAL STATIC PRESSURE EXPANSION TANK ETHYLENE OXIDE ELECTRIC UNIT HEATER EVAPORATIVE WATER COOLER ENTERING WATER TEMPERATURE EXISTING FAHRENHEIT FLOAT AND THERMOSTATIC DAMPER FREE AREA FLEXIBLE CONNECTION FAN COIL UNIT (4 PIPE) FAN COIL UNIT COOLING ONLY FAN COIL UNIT HEATING ONLY FORWARD CURVED WHEEL (FAN) FLOOR DRAIN FIRE DAMPER FINAL FILTER FLUE GAS/FEEDWATER HEAT EXCHANGER FLOW METER FUEL OIL PUMP FUEL OIL TANK FUEL OIL HEAT EXCHANGER FEET PER MINUTE FEET PER SECOND FAN POWERED TERMINAL UNIT FLOOR REGISTER FIBER REINFORCED POLYESTER FLOW SWITCH FREEZESTAT	FT FT-LB FTR FV GA GAL GH GPD GPH GPM GPR GS H H&CW HAC HB HC HD HD HDA HP HP HPDT HPR HPS HSTAT HUM HWC HWHC HWP HWR HWS HWU HVD HX HZ	FEET FOOT-POUND FIN TUBE RADIATION FACE VELOCITY GAUGE GALLONS GRAVITY HOOD GALLONS PER DAY GALLONS PER HOUR GALLONS PER MINUTE GAS PRESSURE REGULATOR GALVANIZED STEEL HUMIDIFIER HOT & COLD WATER HOUSEKEEPING AID CLOSET HOSE BIBB HEATING COIL HEAD HOOD HAND/OFF/AUTOMATIC HEAT PUMP HORSEPOWER HIGH PRESSURE DRIP TRAP HIGH PRESSURE RETURN (STEAM CONDENSATE) HIGH PRESSURE SUPPLY (STEAM) HEAT RECOVERY COIL HEAT RECOVERY DEVICE HYGRONIC RADIANT (CEILING) PANEL HEAT RECOVERY WHEEL HUMIDISTAT HUMIDIFIER TERMINAL HUMIDIFIER UNIT MOUNTED HEATING AND VENTILATING UNIT HOT WATER HOT WATER COIL HOT WATER HEATING COIL HEATING HOT WATER PUMP HEATING HOT WATER RETURN HEATING HOT WATER SUPPLY HOT WATER UNIT HEATER HOISTWAY VENT DAMPER HEAT EXCHANGER HERTZ	I/O IAQ IBT ICF ICU ID IFB IN IN IN HG IN WC IN WC IN WG IN-LB IRLV IRH IS IU IV J kg kg/HR kPa kW kWh L L/h L/m L/s LBS/HR LF LGT LH LPG LPR LPRC LPHX LPS LPSC LSD LTCP LVG LVR LWT	INPUT/OUTPUT INDOOR AIR QUALITY INVERTED BUCKET TRAP IN-LINE CENTRIFUGAL FAN INTENSIVE CARE UNIT INSIDE DIAMETER INTEGRAL FACE AND BYPASS INCHES INCHES OF MERCURY INCH WATER COLUMN INCH WATER GAUGE INCH-POUND INTERGRATED PART LOAD VALVE INTRARED HEATER INSECT SCREEN INDUCTION UNIT INLET VANES INTENTIONALLY LEFT BLANK KILOGRAM KILOGRAM PER HOUR KILOPASCAL KILOWATT KILOWATT HOUR LITER LITERS PER HOUR (OR LITERS/HOUR) LITERS PER MINUTE (OR LITERS/MINUTE) LITERS PER SECOND (OR LITERS/SECOND) LEAVING AIR TEMPERATURE LEAVING FOOT (FEET) LEAVING GLYCOL TEMPERATURE LATENT HEAT LIQUID PROPANE GAS LOW PRESSURE RETURN (STEAM CONDENSATE) LOW PRESSURE STEAM RETURN (CLEAN) LIQUID TO LIQUID HEAT EXCHANGER LOW PRESSURE STEAM LOW PRESSURE STEAM (CLEAN) LINEAR SLOT DIFFUSER LOCAL TEMPERATURE CONTROL PANEL LEAVING LOUVER LEAVING WATER TEMPERATURE	M M/s MA MAT MAU MAV MAX MB MBH MCA MER MERV MH MHP MIN MM MOV MPR MPS MRI MTD MVD MZ NA NC NC NC NGFM NO NOAA NOM NPLV NPST NTS OA OAG OAI OD OPM OR	METER, SI UNIT METERS PER SECOND (OR METERS/SECOND) MIXED AIR MIXED AIR TEMPERATURE MAKE-UP AIR UNIT MANUAL AIR VENT MAXIMUM MIXING BOX 1000 BTUH MINIMUM BRANCH CIRCUIT AMPACITY MECHANICAL EQUIPMENT ROOM MINIMUM EFFICIENCY REPORTING VALUE MANHOLE MOTOR HORSEPOWER MINIMUM MILLIMETER MOTOR OPERATED VALVE MEDIUM PRESSURE RETURN (STEAM CONDENSATE) MEDIUM PRESSURE STEAM MAGNETIC RESONANCE IMAGING MEAN TEMPERATURE DIFFERENCE MANUAL VOLUME DAMPER MULTI-ZONE NOT APPLICABLE NOISE CRITERIA NORMALLY CLOSED NATURAL GAS NATURAL GAS FLOWMETER NORMALLY OPEN NATIONAL OCEANIC & ATMOSPHERIC ADMINISTRATION NON-STANDARD PART LOAD VALVE NET POSITIVE SUCTION HEAD NOT TO SCALE OUTSIDE AIR OUTSIDE AIR GRILLE OUTSIDE AIR INTAKE OUTSIDE DIAMETER OIL FLOWMETER OPERATING ROOM	P PA PC PCF PD PEF PF PG PGW PHC PPM PRS PRV PSI PSIA PSIG PSS PSV PTAC R/E RA RAD RAF RAHX RAT RCCH RCU RD RDS REA RF RG RH RHC RHG RL RLA RND RPM RR RS RTU RV	PUMP PASCAL PUMPED CONDENSATE POUNDS PER CUBIC FOOT (FEET) PRESSURE DROP PROPELLER (TYPE) EXHAUST FAN PRE-FILTER PRESSURE GAGE PROPYLENE GLYCOL-WATER (SOLUTION) PREHEAT COIL PARTS PER MILLION PRESSURE REGULATING (VALVE) STATION PRESSURE REGULATING VALVE POUNDS PER SQUARE INCH POUNDS PER SQUARE INCH ABSOLUTE PRIMARY SECONDARY SYSTEM PRESSURE SAFETY VALVE PACKAGED TERMINAL AIR CONDITIONER RETURN OR EXHAUST RETURN AIR REFRIGERANT AIR DRYER RADIO FREQUENCY ROTARY AIR HEAT EXCHANGER RETURN AIR TEMPERATURE REMOTE CONDENSER CHILLER RECIPROCATING CHILLER UNIT REFRIGERANT DISCHARGE ROOM DATA SHEETS RELIEF AIR RETURN FAN RETURN GRILLE RELATIVE HUMIDITY REHEAT COIL REFRIGERANT HOT GAS REFRIGERANT LIQUID LINE RUN LOAD AMPERE REVERSE OSMOSIS REVOLUTIONS PER MINUTE RETURN REGISTER REFRIGERANT SUCTION ROOF TOP UNIT RELIEF VALVE	SA SAD SAT SC SCFM SCI SCR SD SD-1 SD-2 SDPR SDR SDS SEN SF SG SH SHC SI SP SP GR SPD SPRV SPS SQ SR SS SSHX SSR ST SUH SVS SWHX T & PCV TAB TD TDH TDS TG TP TR TSP TSTAT TU TWU	SUPPLY AIR SOUND ATTENUATING DEVICE SUPPLY AIR TEMPERATURE SHADING COEFFICIENT STANDARD CUBIC FEET PER MINUTE SPINAL CODE INJURY SILICON CONTROLLED RECTIFIER SMOKE DETECTOR SUPPLY AIR DIFFUSER SCHEMATIC DESIGN (SUBMISSION1) SCHEMATIC DESIGN (SUBMISSION2) SMOKE DAMPER SMOKE DAMPER (RETURN) SMOKE DAMPER (SUPPLY) SENSIBLE HEAT SUPPLY FAN SUPPLY AIR GRILLE STEAM HUMIDIFIER STEAM HEATING COIL SQUARE INCHES STATIC PRESSURE SPECIFIC GRAVITY SUPPLY PROCESS AND DISTRIBUTION STEAM PRESSURE REDUCING VALVE STATIC PRESSURE SENSOR SQUARE FOOT (FEET) SUPPLY AIR REGISTER STAINLESS STEEL STEAM TO STEAM HEAT EXCHANGER SOLID SEPARATOR STEAM TRAP STEAM UNIT HEATER STEAM PRESSURE REDUCING VALVE STEAM VENT SILENCER STEAM TO WATER HEAT EXCHANGER	UC UC UH UL URV V VAF VAV VD VFD VHA VI VIV VP VPS VR VSD VUH W WAG WB WC WCH WCCU WCHP WCPU WEF WF WFCV WFM WFMD WG WFD YR	UNDER CUT UNIT COOLER UNIT HEATER UNDERWRITERS LABORATORY UPBLAST UNIT VENTILATOR VALVE VANE-AXIAL FAN VARIABLE AIR VOLUME VOLUME DAMPER (MANUAL OPPOSED BLADE) VARIABLE FREQUENCY DRIVE VETERANS HEALTH ADMINISTRATION VIBRATION ISOLATOR VARIABLE INLET VANES VACUUM PUMP VARIABLE PRIMARY SYSTEM VACUUM (STEAM CONDENSATE) RETURN VARIABLE SPEED DRIVE VERTICAL UNIT HEATER WATTS WASTE ANESTHESIA GAS WET-BULB (TEMPERATURE) WATER COOLED WATER COOLED CHILLER WATER COOLED CONDENSING UNIT WATER COOLED HEAT PUMPS WATER COOLED PACKAGED UNIT WALL EXHAUST FAN WATER FILTER WATER FLOW CONTROL VALVE WATER FLOWMETER WATER FLOW MEASURING DEVICE WATER GAGE WATER SIDE PRESSURE DROP YEAR
---	---	--	---	--	---	--	--	--	--	--	---	---	--	--	---

DRAWING SYMBOLS



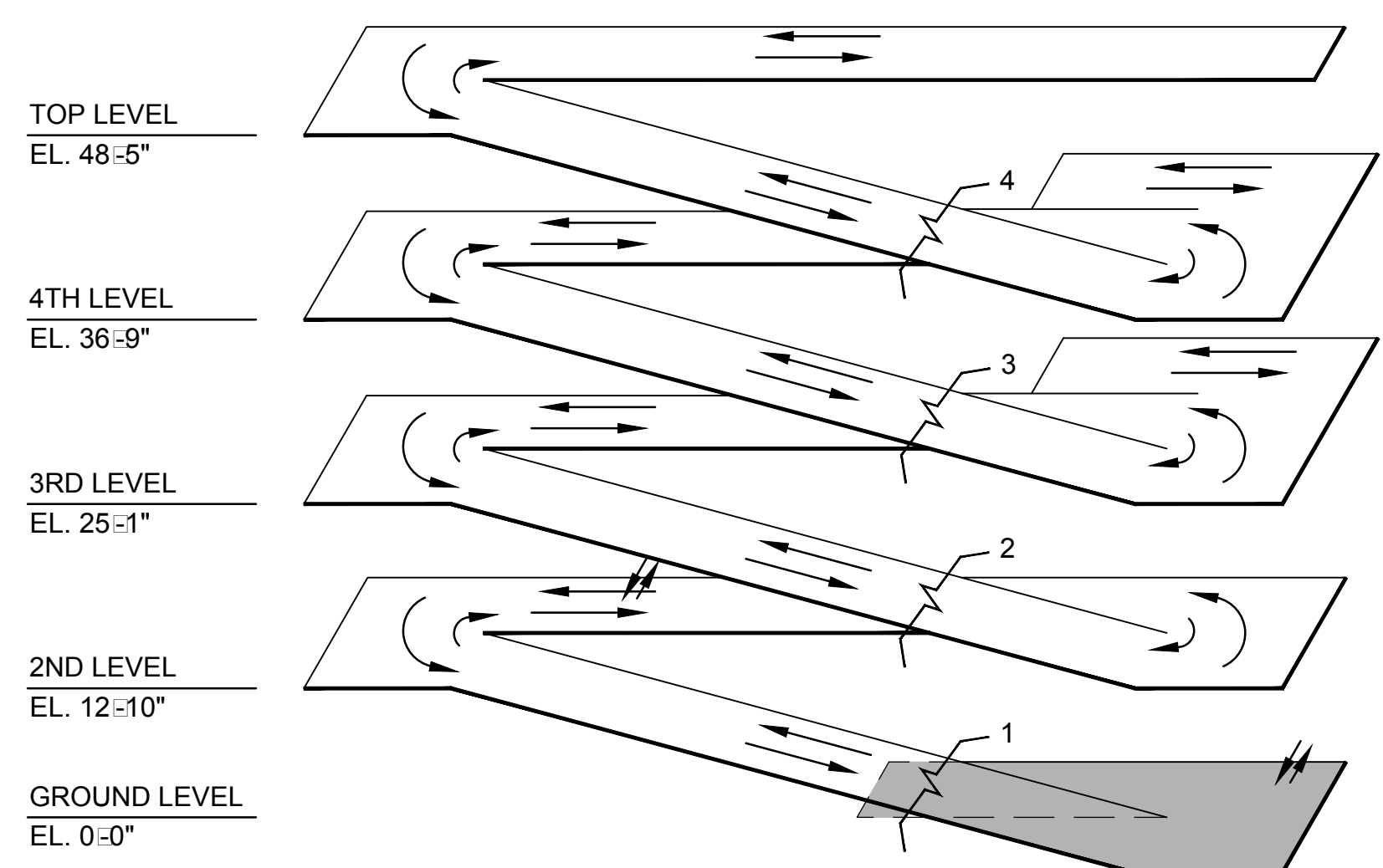
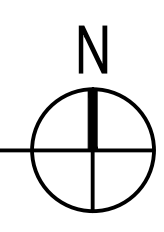
FINAL CONSTRUCTION DRAWINGS
APPROVED FOR CONSTRUCTION

Dwg. File	ARCHITECT/ENGINEERS: AKEA INC. 3603 NW 98TH ST., SUITE B GAINESVILLE, FLORIDA 32606 PH: (352) 474-6124 FAX: (352) 474-6324 CERT OF AUTH: FL #26693 EXPIRES: 02/28/2017	Stephen T. Stoffe, PE Florida Reg. 70349 AKEA, INC. SEAL	CONSULTANTS: WALKER PARKING CONSULTANTS 4904 Eisenhower Blvd Suite 150 Tampa, FL 33634 813.888.5800 Ph 813.888.5822 Fax BE-0003840 www.walkerparking.com FRANK DAUGHTRY architect 200 E. Government Street Suite 240-A Pensacola, FL 32502 Voice 850-433-3023 Fax 850-433-3025 Email frank@frankda.com	Approved: Asst. Chief, Engineering Service Engineering Bldg. Maint. Foreman Engineering Operation Foreman Engineering Health & Safety Engineering Planning & Analysis C.O.T.R.	Drawing Title MECHANICAL ABBREVIATIONS Approved: Chief, Engineering Service Approved: Service Chief	Project Title CONSTRUCT 525 SPACE PARKING GARAGE CONTRACT No. VA249-14-C-0150 P.O. No. 621C40254 Building Number 160 Checked STS Drawn CRR Location VAMC MOUNTAIN HOME, TENNESSEE	Date MARCH 26, 2015 Project No. 621-330 DRAWING NO. M003 Page 82 of 131	Department of Veterans Affairs
-----------	--	--	---	--	---	--	--	-----------------------------------



MECHANICAL SYSTEMS PLAN - GROUND LEVEL

SCALE: 1/16" = 1'



ISOMETRIC

FINAL CONSTRUCTION DRAWINGS
APPROVED FOR CONSTRUCTION

SHEET NOTES

A. PROVIDE SEISMIC BRACING FOR ALL DUCTWORK AND EQUIPMENT IN ACCORDANCE WITH SMACNA FOR MOUNTAIN HOME, TENNESSEE.

SHEET KEYNOTES

NOT USED

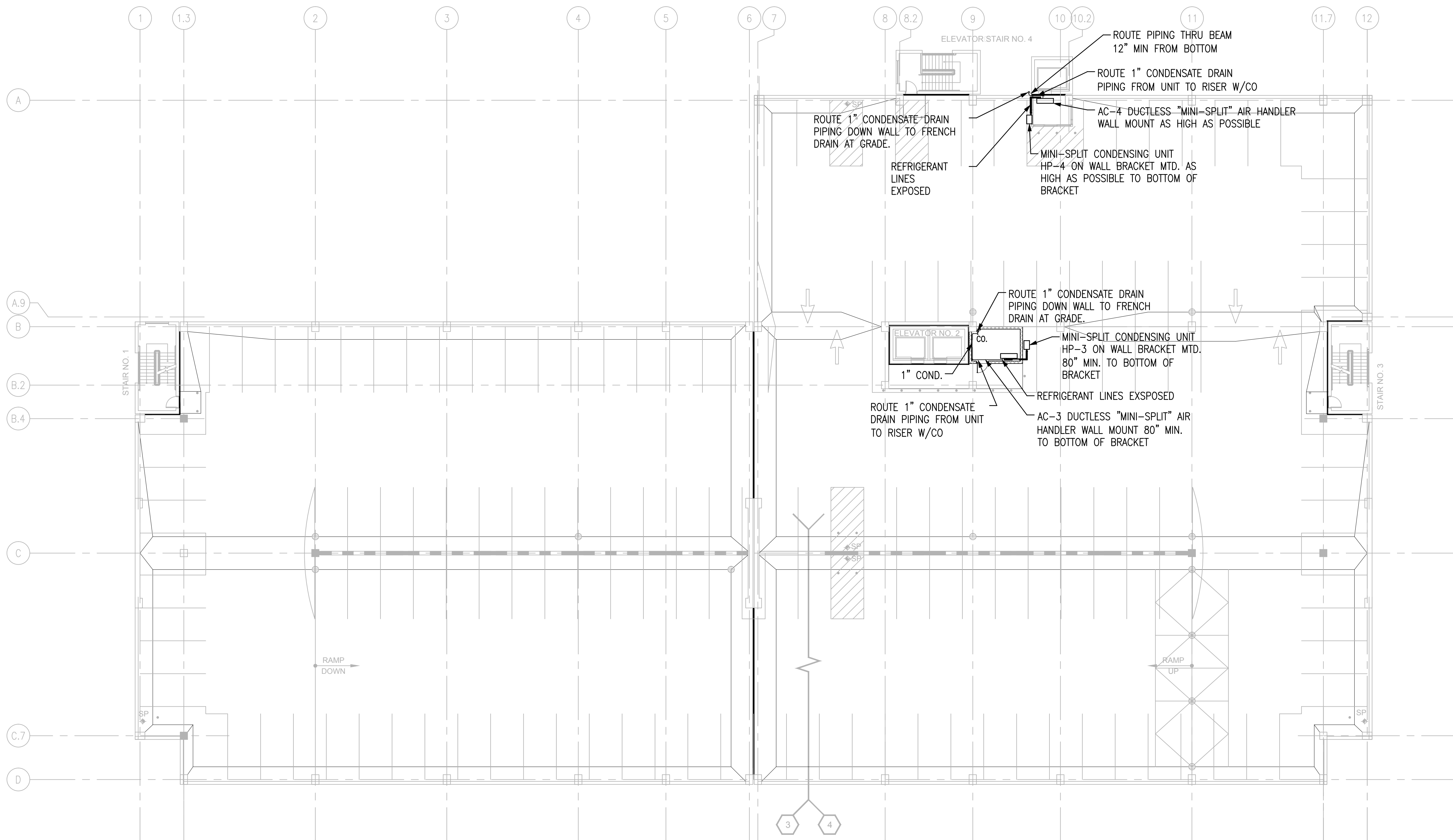
Dwg. File 	ARCHITECT/ENGINEERS: AKEA INC. 3603 NW 98TH ST., SUITE B GAINESVILLE, FLORIDA 32606 PH: (352) 474-6124 FAX: (352) 474-6324 CERT OF AUTH: FL #26693 EXPIRES: 02/28/2017	Stephen T. Stelfe, PE Florida Reg. 70349 CONSULTANTS: WALKER PARKING CONSULTANTS 4904 Eisenhower Blvd Suite 150 Tampa, FL 33634 813.888.5800 Ph 813.888.5822 Fax BE-0003840 www.walkerparking.com	FRANK DAUGHTRY architect 200 E. Government Street Suite 240-A Pensacola, FL 32502 Voice 850-433-3023 Fax 850-433-3025 Email frank@frankda.com	Approved: Asst. Chief, Engineering Service Engineering Bldg. Maint. Foreman Engineering Operation Foreman Engineering Health & Safety Engineering Planning & Analysis C.O.T.R.	Drawing Title MECHANICAL SYSTEMS PLAN - GROUND LEVEL Approved: Chief, Engineering Service Approved: Service Chief	Project Title CONSTRUCT 525 SPACE PARKING GARAGE CONTRACT No. VA249-14-C-0150 P.O. No. 621C40254 Building Number 160 Checked STS Drawn CRR Location VAMC MOUNTAIN HOME, TENNESSEE	Date MARCH 26, 2015 Project No. 621-330 DRAWING NO. M200 Page 83 of 131	Department of Veterans Affairs
----------------------	---	--	---	---	--	--	---	---------------------------------------

NOT USED



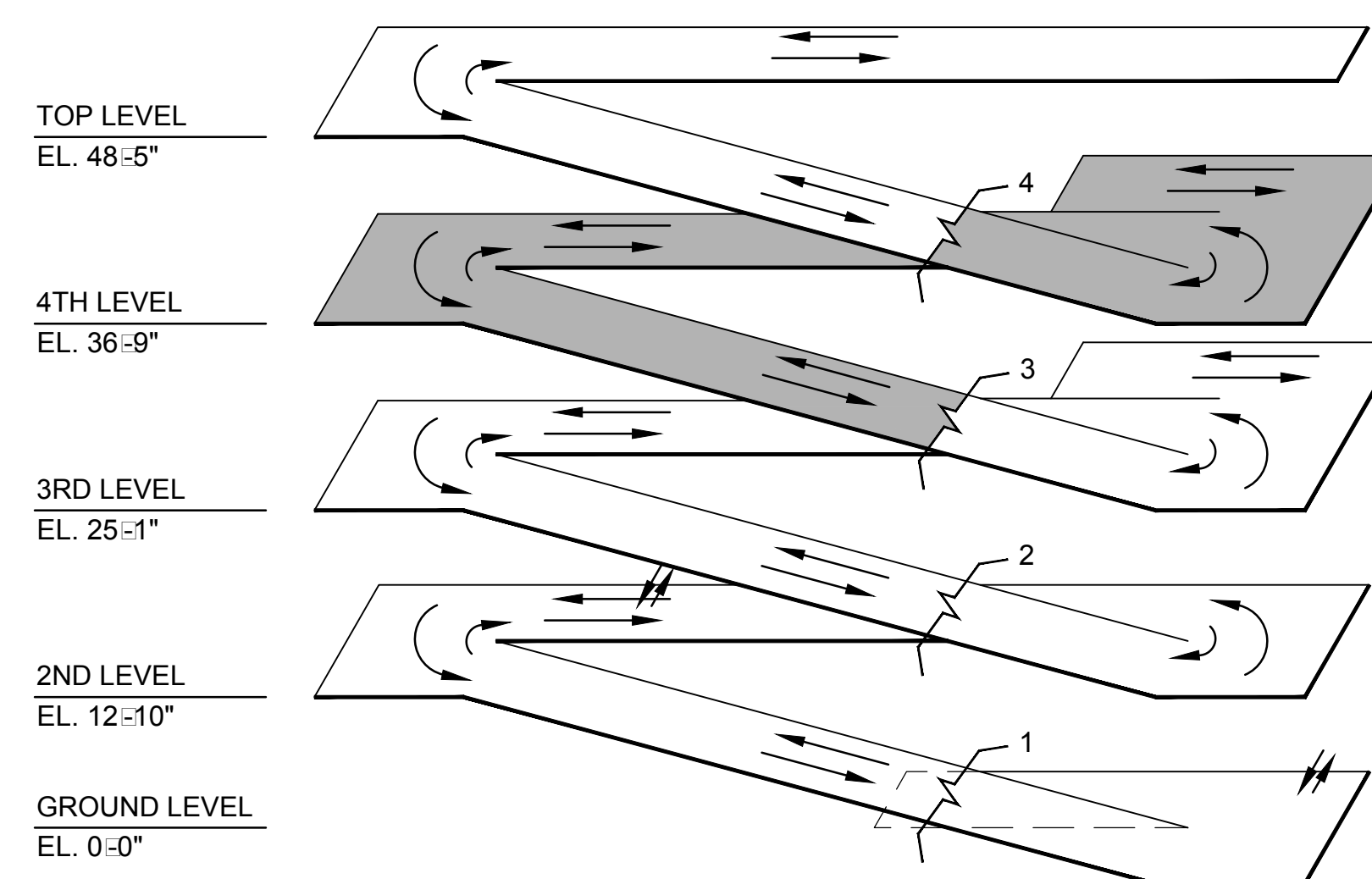
FINAL CONSTRUCTION DRAWINGS
APPROVED FOR CONSTRUCTION

Department of
Veterans Affairs



MECHANICAL SYSTEMS PLAN - FOURTH LEVEL

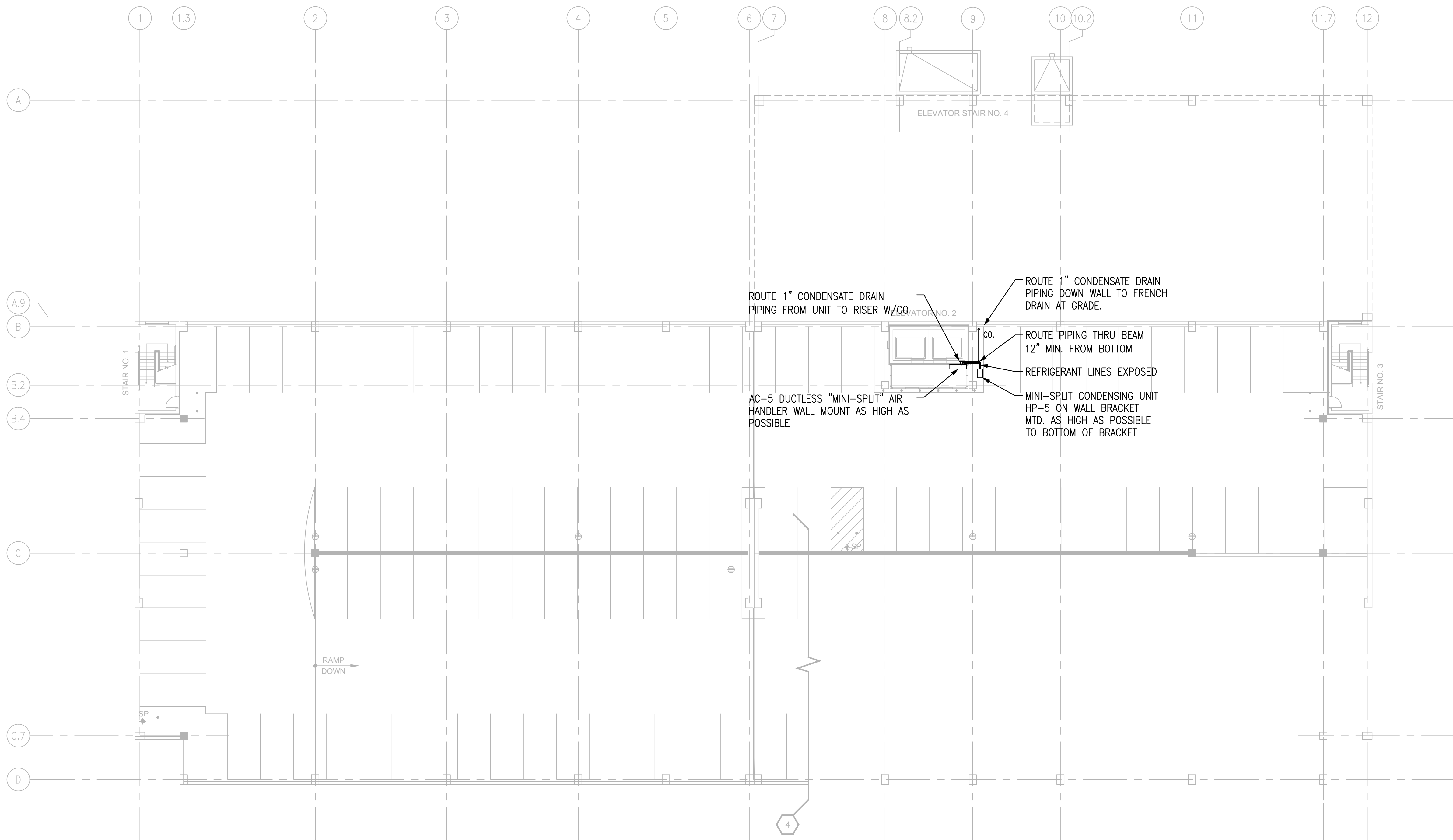
SCALE: 1/16" = 1'



ISOMETRIC

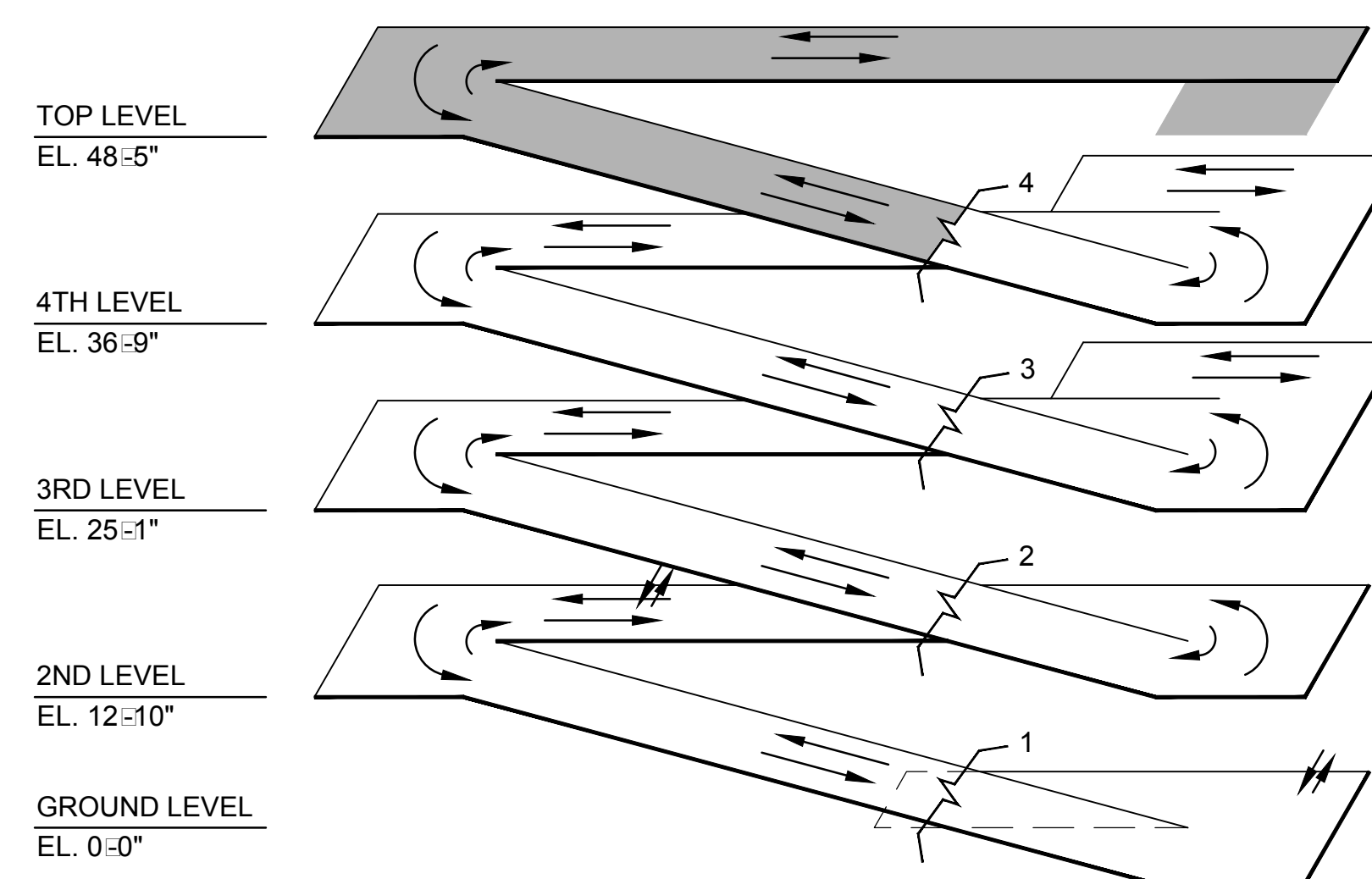
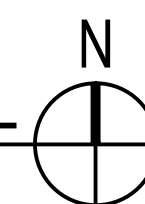
FINAL CONSTRUCTION DRAWINGS
APPROVED FOR CONSTRUCTION

Dwg. File	ARCHITECT/ENGINEERS:	Stephen T. Stelfs, PE Florida Reg. 70349	CONSULTANTS:	Approved:	Drawing Title	Project Title	Date
	AKEA INC. 3603 NW 98TH ST., SUITE B GAINESVILLE, FLORIDA 32606 PH: (352) 474-6124 FAX: (352) 474-6324 CERT OF AUTH: FL #26693 EXPIRES: 02/28/2017		WALKER PARKING CONSULTANTS 4904 Eisenhower Blvd Suite 150 Tampa, FL 33634 813.888.5800 Ph 813.888.5822 Fax BE-0003840 www.walkerparking.com	Asst. Chief, Engineering Service Engineering Bldg. Maint. Foreman Engineering Operation Foreman Engineering Health & Safety Engineering Planning & Analysis C.O.T.R.	MECHANICAL SYSTEMS PLAN - FOURTH LEVEL	CONSTRUCT 525 SPACE PARKING GARAGE CONTRACT No. VA249-14-C-0150 P.O. No. 621C40254	MARCH 26, 2015
Revisions		AKEA, INC.	SEAL		Approved: Chief, Engineering Service Approved: Service Chief	Building Number 160 Checked STS Drawn CRR Location VAMC MOUNTAIN HOME, TENNESSEE	Project No. 621-330 DRAWING NO. M202 Page 85 of 131

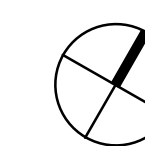


MECHANICAL SYSTEMS PLAN - TOP LEVEL

SCALE: 1/16" = 1'



ISOMETRIC



FINAL CONSTRUCTION DRAWINGS
APPROVED FOR CONSTRUCTION

SHEET NOTES

A. PROVIDE SEISMIC BRACING FOR ALL DUCTWORK AND EQUIPMENT IN ACCORDANCE WITH SMACNA FOR MOUNTAIN HOME, TENNESSEE.

SHEET KEYNOTES

NOT USED

Dwg. File	ARCHITECT/ENGINEERS:	Stephen T. Stelfs, PE Florida Reg. 70349	CONSULTANTS:	Approved:	Drawing Title	Project Title	Date
	AKEA INC.		WALKER PARKING CONSULTANTS	Asst. Chief, Engineering Service	MECHANICAL SYSTEMS PLAN - TOP LEVEL	CONSTRUCT 525 SPACE PARKING GARAGE	MARCH 26, 2015
	3603 NW 98TH ST., SUITE B GAINESVILLE, FLORIDA 32606 PH: (352) 474-6124 FAX: (352) 474-6324 CERT OF AUTH: FL #26693 EXPIRES: 02/28/2017		4904 Eisenhower Blvd Suite 150 Tampa, FL 33634 813.888.5800 Ph 813.888.5822 Fax BE-0003840 www.walkerparking.com	Engineering Bldg. Maint. Foreman Engineering Operation Foreman Engineering Health & Safety Engineering Planning & Analysis C.O.T.R.	CONTRACT No. VA249-14-C-0150 P.O. No. 621C40254	Building Number 160 Checked STS Drawn CRR	Project No. 621-330 DRAWING NO. M203 Page 86 of 131
Revisions	Date	AKEA, INC.	SEAL		Approved: Chief, Engineering Service	Location VAMC MOUNTAIN HOME, TENNESSEE	