

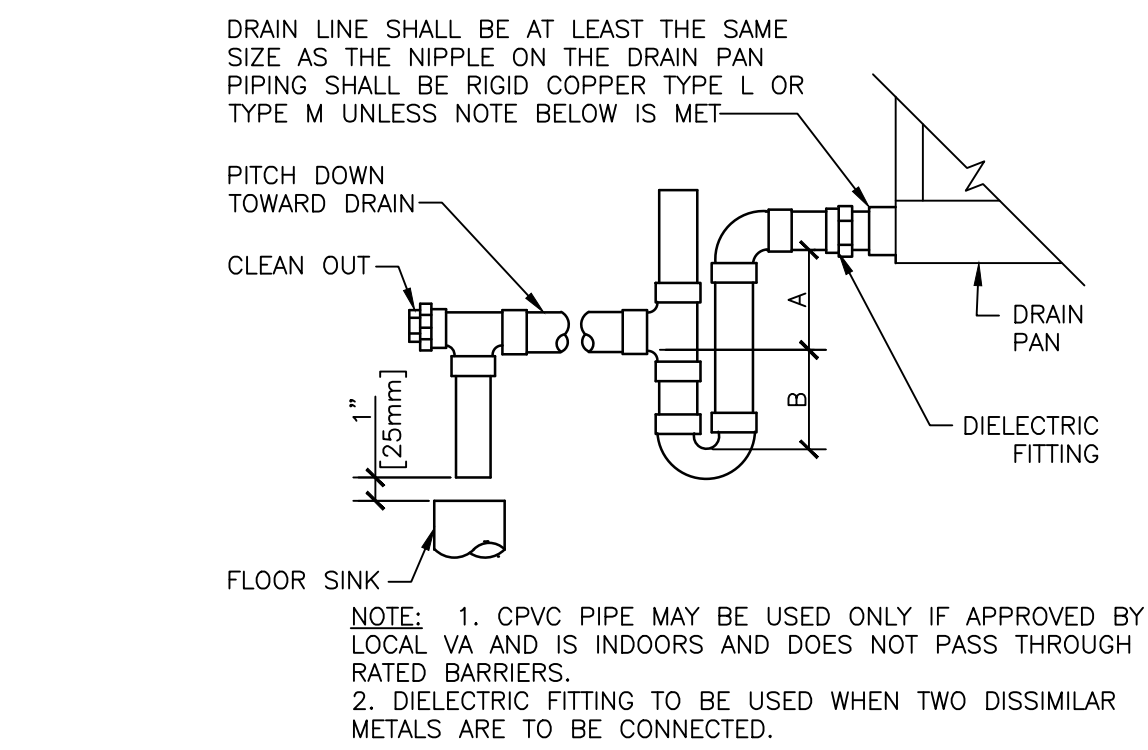
0
three inches = one foot
1
one and one-half inches = one foot
2
one inch = one foot
3
one-half inch = one foot
4
three-quarters inch = one foot
5
one-half inch = one foot
6
three-eighths inch = one foot
7
one-quarter inch = one foot
8
one-eighth inch = one foot
9
one-eighth inch = one foot

0
three inches = one foot
1
one and one-half inches = one foot
2
one inch = one foot
3
one-half inch = one foot
4
three-quarters inch = one foot
5
one-half inch = one foot
6
three-eighths inch = one foot
7
one-quarter inch = one foot
8
one-eighth inch = one foot
9
one-eighth inch = one foot

MINI-SPLIT SYSTEM / HEAT PUMP SCHEDULE																			
MARK	SYSTEM TYPE	MANUFACTURER	INDOOR UNIT MODEL	TONS	COOLING CAPACITY		RATING CONDITIONS		INDOOR UNIT				ELECTRICAL		OUTDOOR UNIT MODEL	ELECTRICAL		REFRIGERANT	NOTES
					TOTAL BTUH	SEER	AMB	EAT-DB/WB	CONFIG	CFM	SPEEDS	VOLTS/ø/FLA	BRKR	V/PH		MCA	V/PH		
AC-1/HP-1	PKA HEAT PUMP	MTSUSHISHI	PKA-A24KA4	2.0	24000	17.0	95	80/67	WALL MTD	635	3	95/0.54	25	208/1	PUZ-A24NHA4	18	208/1	R410A	1,2,3,4,5,6,7,8,9
AC-2/HP-2	PKA HEAT PUMP	MTSUSHISHI	PKA-A18KA4	1.5	18000	15.3	95	80/67	WALL MTD	425	3	95/0.54	20	208/1	PUZ-A24NHA4	13	208/1	R410A	1,2,3,4,5,6,7,8,9
AC-3/HP-3	PKA HEAT PUMP	MTSUSHISHI	PKA-A24KA4	2.0	24000	17.0	95	80/67	WALL MTD	635	3	95/0.54	25	208/1	PUZ-A24NHA4	18	208/1	R410A	1,2,3,4,5,6,7,8,9
AC-4/HP-4	PKA HEAT PUMP	MTSUSHISHI	PKA-A18KA4	1.5	18000	15.3	95	80/67	WALL MTD	425	3	95/0.54	20	208/1	PUZ-A24NHA4	13	208/1	R410A	1,2,3,4,5,6,7,8,9
AC-5/HP-5	PKA HEAT PUMP	MTSUSHISHI	PKA-A24KA4	2.0	24000	17.0	95	80/67	WALL MTD	635	3	95/0.54	25	208/1	PUZ-A24NHA4	18	208/1	R410A	1,2,3,4,5,6,7,8,9
AC-6/HP-6	PKA HEAT PUMP	MTSUSHISHI	PKA-A24KA4	2.0	24000	17.0	95	80/67	WALL MTD	635	3	95/0.54	25	208/1	PUZ-A24NHA4	18	208/1	R410A	1,2,3,4,5,6,7,8,9
1. WIRELESS REMOTE CONTROL 2. USE FACTORY LINE SET 3. VERTICAL AND HORIZONTAL OSCILLATING ADJUSTABLE AIR FLOW 4. LOW AMBIENT KIT FOR WINTER OPERATION 5. CLEANABLE ANTIBACTERIAL FILTERS 6. POWER TO INDOOR UNIT FEED FROM OUTDOOR UNIT 7. WALL MOUNTING KIT 8. OUTDOOR UNIT WEIGHT = 200 LBS ± 2 TON, INDOOR UNIT WEIGHT = 75 LBS ± 9. PROVIDE UNIT MOUNTED MINI CONDENSATE PUMP FOR 25 FOOT OF HEAD																			

FINAL CONSTRUCTION DRAWINGS
APPROVED FOR CONSTRUCTION

Dwg. File	ARCHITECT/ENGINEERS:	Stephen T. Stoffe, PE Florida Reg. 70349	CONSULTANTS:	Approved:	Drawing Title	Project Title	Date				
	AKEA INC. 3603 NW 98TH ST., SUITE B GAINESVILLE, FLORIDA 32606 PH: (352) 474-6124 FAX: (352) 474-6324 CERT OF AUTH: FL #26693 EXPIRES: 02/28/2017	AKEA, INC. SEAL	WALKER PARKING CONSULTANTS 4904 Eisenhower Blvd Suite 150 Tampa, FL 33634 813.888.5800 Ph 813.888.5822 Fax BE-0003840 www.walkerparking.com	FRANK DAUGHTRY architect 200 E. Government Street Suite 240-A Pensacola, FL 32502 Voice 850-433-3023 Fax 850-433-3025 Email frank@frankda.com	Asst. Chief, Engineering Service Engineering Bldg. Maint. Foreman Engineering Operation Foreman Engineering Health & Safety Engineering Planning & Analysis C.O.T.R.	CONSTRUCT 525 SPACE PARKING GARAGE CONTRACT No. VA249-14-C-0150 P.O. No. 621C40254	MARCH 26, 2015				
							Project No.				
							621-330				
							DRAWING NO.				
							M600				
Revisions	Date					Building Number 160	Checked STS	Drawn CRR	Location VAMC MOUNTAIN HOME, TENNESSEE	Page 87 of 131	Department of Veterans Affairs

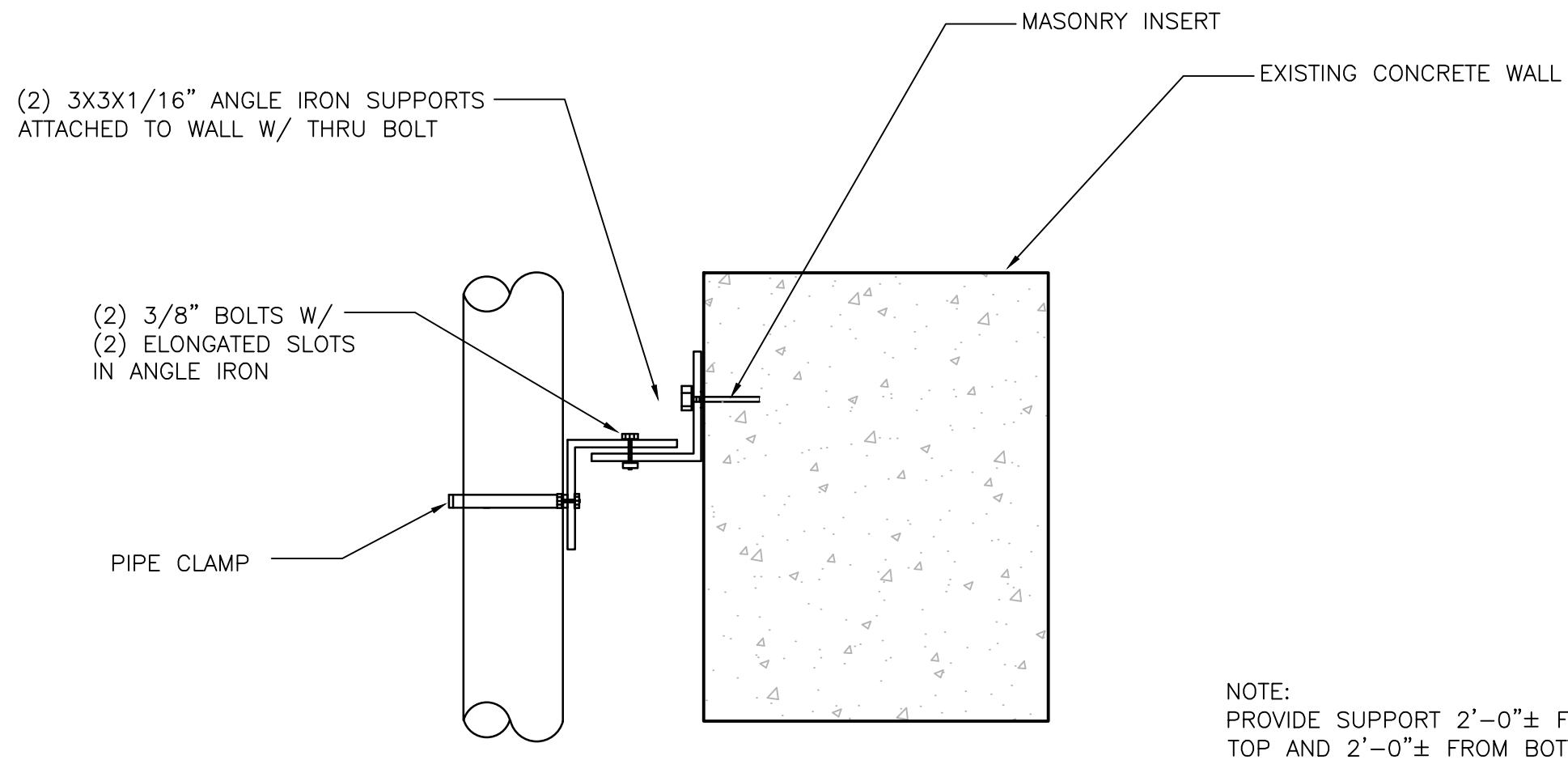


UNIT TYPE	A	B
DRAW THRU	2" [50mm] PLUS X	X
BLOW THRU	1" [25mm] MINIMUM	2X

WHERE X = STATIC PRESSURE IN PAN

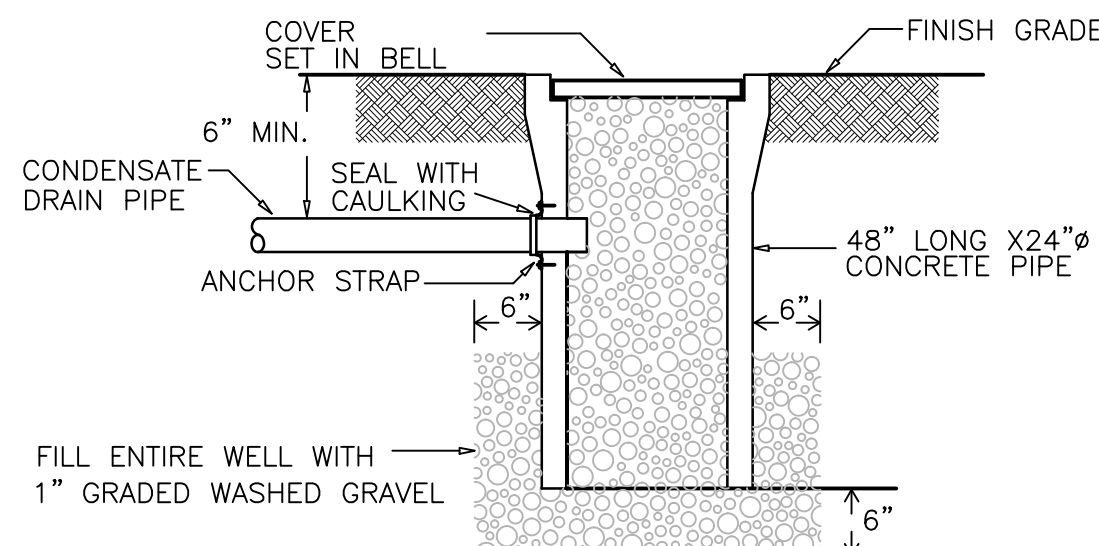
AIR HANDLING UNIT DRAIN TRAP DETAIL

NTS



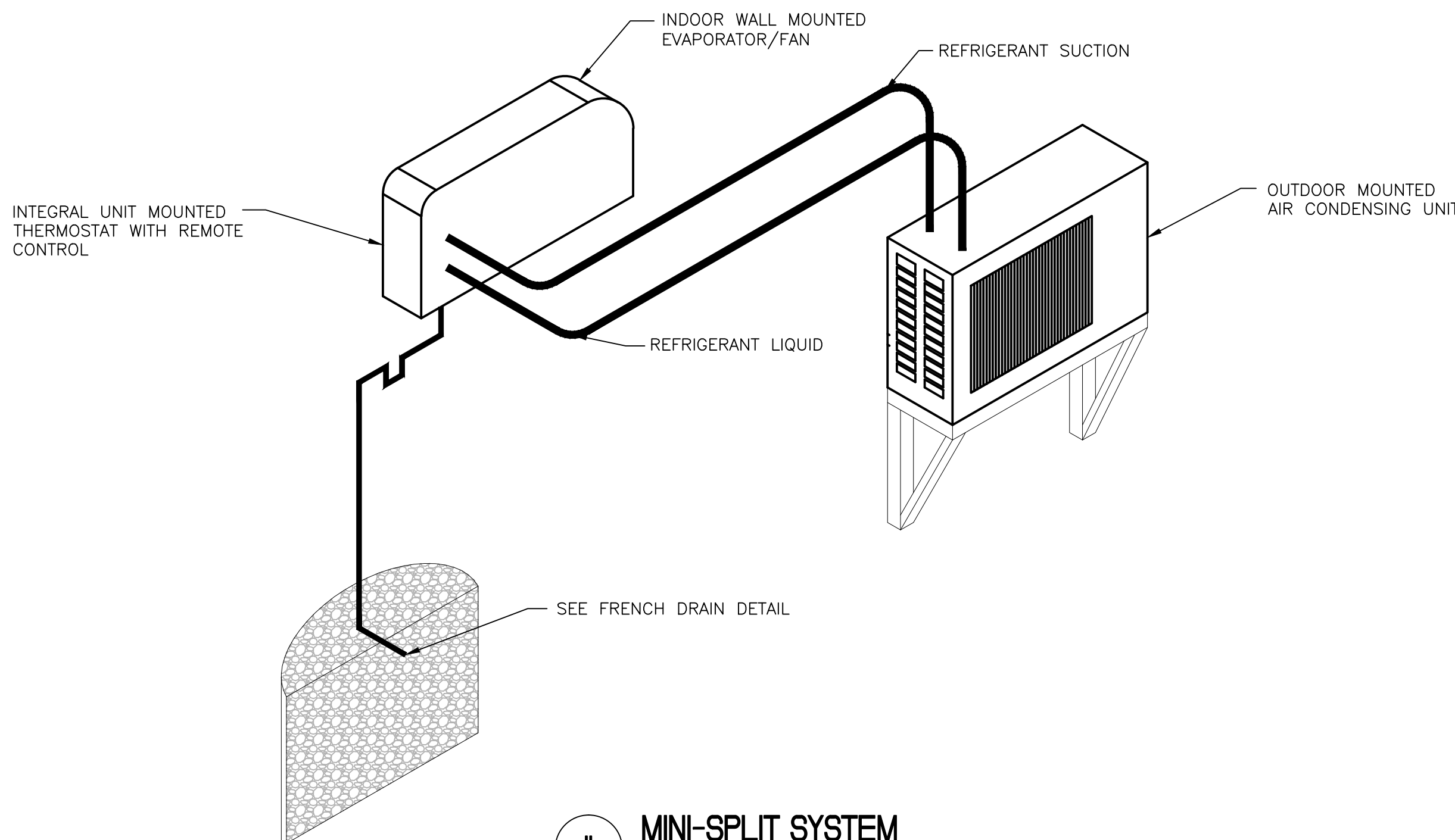
WALL PIPE SUPPORT

NTS



FRENCH DRAIN

NTS



MINI-SPLIT SYSTEM

NTS

FINAL CONSTRUCTION DRAWINGS
APPROVED FOR CONSTRUCTION

Dwg. File	ARCHITECT/ENGINEERS:	Stephen T. Stelfe, PE Florida Reg. 70349	CONSULTANTS:	Approved:	Drawing Title	Project Title	Date			
	AKEA INC. 3603 NW 98TH ST., SUITE B GAINESVILLE, FLORIDA 32606 PH: (352) 474-6124 FAX: (352) 474-6324 CERT OF AUTH: FL #26693 EXPIRES: 02/28/2017	AKEA, INC.	WALKER PARKING CONSULTANTS 4904 Eisenhower Blvd Suite 150 Tampa, FL 33634 813.888.5800 Ph 813.888.5822 Fax BE-0003840 www.walkerparking.com	FRANK DAUCHTRY architect 200 E. Government Street Suite 240-A Pensacola, FL 32502 Voice 850-433-3023 Fax 850-433-3025 Email frank@frankda.com	Asst. Chief, Engineering Service Engineering Bldg. Maint. Foreman Engineering Operation Foreman Engineering Health & Safety Engineering Planning & Analysis C.O.T.R.	DETAILS	CONSTRUCT 525 SPACE PARKING GARAGE CONTRACT No. VA249-14-C-0150 P.O. No. 621C40254	MARCH 26, 2015		
								Project No.		
								621-330		
								DRAWING NO.		
								M700		
Revisions	Date					Building Number	Checked	Drawn	Location	Page 88 of 131
						160	STS	CRR	VAMC MOUNTAIN HOME, TENNESSEE	

ABBREVIATIONS

ABV ABOVE
ACU AIR CONDITIONING UNIT
A/C ABOVE CEILING
AD ACCESS DOOR
AFF ABOVE FINISHED FLOOR
AFG ABOVE FINISHED GRADE
AHU AIR HANDLING UNIT
AP ACCESS PANEL
AUX AUXILIARY
AV ACID VENT
AVTR ACID VENT THRU ROOF
AW ACID WASTE

BFP BACKFLOW PREVENTER
BTUH BRITISH THERMAL UNITS PER HOUR
B/F BELOW FLOOR

C CONDENSATE DRAIN
CFF CAP FOR FUTURE
CFH CUBIC FEET PER HOUR
CFM CUBIC FEET PER MINUTE
C/L CENTERLINE
CO CLEAN OUT
CONC CONCRETE
CONN CONNECTION
CONT CONTINUED, CONTINUATION
CV CONTROL VALVE
CW COLD WATER

D DRAIN
DEPT. DEPARTMENT
DF DRINKING FOUNTAIN
DI DE-IONIZE WATER SUPPLY
DIA (Ø) DIAMETER
DIM DIMENSION
DN DOWN
DR DE-IONIZE WATER RETURN
DWG DRAWING

EFF EFFICIENCY
EL ELEVATION
ELEC ELECTRIC
ENT ENTERING
EOM END OF MAIN DRIP
EWH ELECTRIC WATER HEATER
EWC ELECTRIC WATER COOLER
EXIST EXISTING

F FIRE WATER
FA FRESH AIR
FCO FLOOR CLEAN OUT
FD FLOOR DRAIN
FDC FIRE DEPT. CONN.
FHC FIRE HOSE CABINET
FIN FINISHED
FL FLOOR
FLEX FLEXIBLE
FP FIRE PUMP
FPM FEET PER MINUTE
FS FLOW SWITCH
FT FEET
FUT FUTURE

GND GROUND
GPM GALLONS PER MINUTE
GV GATE VALVE

HB HOSE BIBB
HORIZ HORIZONTAL
HP HORSEPOWER
HTG HEATING
HW HOT WATER (DOMESTIC)
HWR HOT WATER RETURN
HWRP HOT WATER RETURN PUMP

IE INVERT ELEVATION
IN INCHES
ID INSIDE DIMENSION
IW INDIRECT WASTE
INC INCREASER

KW KILOWATT

LAB LABORATORY
LAV LAVATORY
LB POUND
LVG LEAVING

MBH THOUSANDS BTU/HR
MECH MECHANICAL
MV MIXING VALVE
MUW MAKE-UP WATER

N/A NOT APPLICABLE
NIC NOT IN CONTRACT
NFWH NON-FREEZE WALL HYDRANT
NTS NOT TO SCALE

OC ON CENTER
OPP OPPOSED
OS&Y OUTSIDE SCREW AND YOKE

P PUMP
PD PRESSURE DROP
PI PRESSURE INDICATOR
PIV POST INDICATOR VALVE
PLD PLANTER DRAIN
POC POINT OF CONNECTION
PRESS PRESSURE
PRV PRESSURE REGULATING VALVE
PS PRESSURE SWITCH
PSIG POUNDS PER SQUARE INCH GAUGE
PVC POLYVINYL CHLORIDE

QTY QUANTITY

RD ROOF DRAIN
REF REFERENCE
RM ROOM
RL RAIN WATER LEADER
RTU ROOF TOP UNIT

SAN SANITARY
SHT SHEET
SQ FT SQUARE FOOT
ST STORM
STM STEAM

TEMP TEMPERATURE
TK TANK
TP TRAP PRIMER
TYP TYPICAL
TW TEMPERED WATER

U/G UNDER GROUND

V VENT
VAC VACUUM
VEL VELOCITY
VERT VERTICAL
VTR VENT THRU ROOF

W WASTE
W/ WITH
WCO WALL CLEAN OUT
WG WATER GAUGE
WH WATER HEATER
WHA WATER HAMMER ARRESTER
W/O WITHOUT
WS SERVICE WATER
WTR WATER

PIPE LINES

--- COLD WATER (DOMESTIC) -- CW
--- HOT WATER (DOMESTIC) -- HW
--- HOT WATER RECIRCULATING (DOMESTIC) -- HWR
----- VENT (V)
--- SAN --- SANITARY PIPING
--- SAN --- UNDERGROUND SANITARY
--- C --- CONDENSATE DRAIN
--- G --- NATURAL GAS
--- ST --- STORM
--- --- UNDERGROUND STORM
--- IW --- INDIRECT WASTE

PIPE AND FITTING SYSTEM

--- GATE VALVE
--- O.S.& Y. GATE VALVE W/ TAMPER SWITCH
--- GLOBE VALVE
--- ANGLE GATE VALVE
--- ANGLE GLOBE VALVE
--- SWING CHECK VALVE
--- BUTTERFLY VALVE
--- PLUG VALVE
--- BALL VALVE
--- UNION
--- P-TRAP
--- ELBOW UP
--- ELBOW DN
--- RISE OR DROP
--- BRANCH CONNECTION DN
--- PRESSURE GAUGE W/TRY COCK
--- TEST PLUG
--- FS FLOW SWITCH
--- F FLOW INDICATOR/SENSOR
--- REDUCER, CONCENTRIC
--- REDUCER, ECCENTRIC
--- STRAIGHT CROWN
--- REDUCER, ECCENTRIC
--- STRAIGHT INVERT
--- PRESSURE REDUCING VALVE
--- SAFETY OR RELIEF VALVE
--- AUTOMATIC AIR VENT VALVE
--- MANUAL AIR VENT VALVE
--- STRAINER, Y TYPE W/GATE VALVE OR HOSE BIBB
--- FLEXIBLE CONNECTION
--- EXPANSION JOINT
--- FLOW DIRECTION
--- CAPPED END
--- BACKFLOW PREVENTER
--- SIAMESE FIRE DEPARTMENT CONNECTION
--- POST INDICATOR VALVE (PIV)
--- SUPERVISORY BUTTERFLY VALVE
--- POINT OF CONNECTION
--- WALL CLEAN OUT
--- FLOOR DRAIN

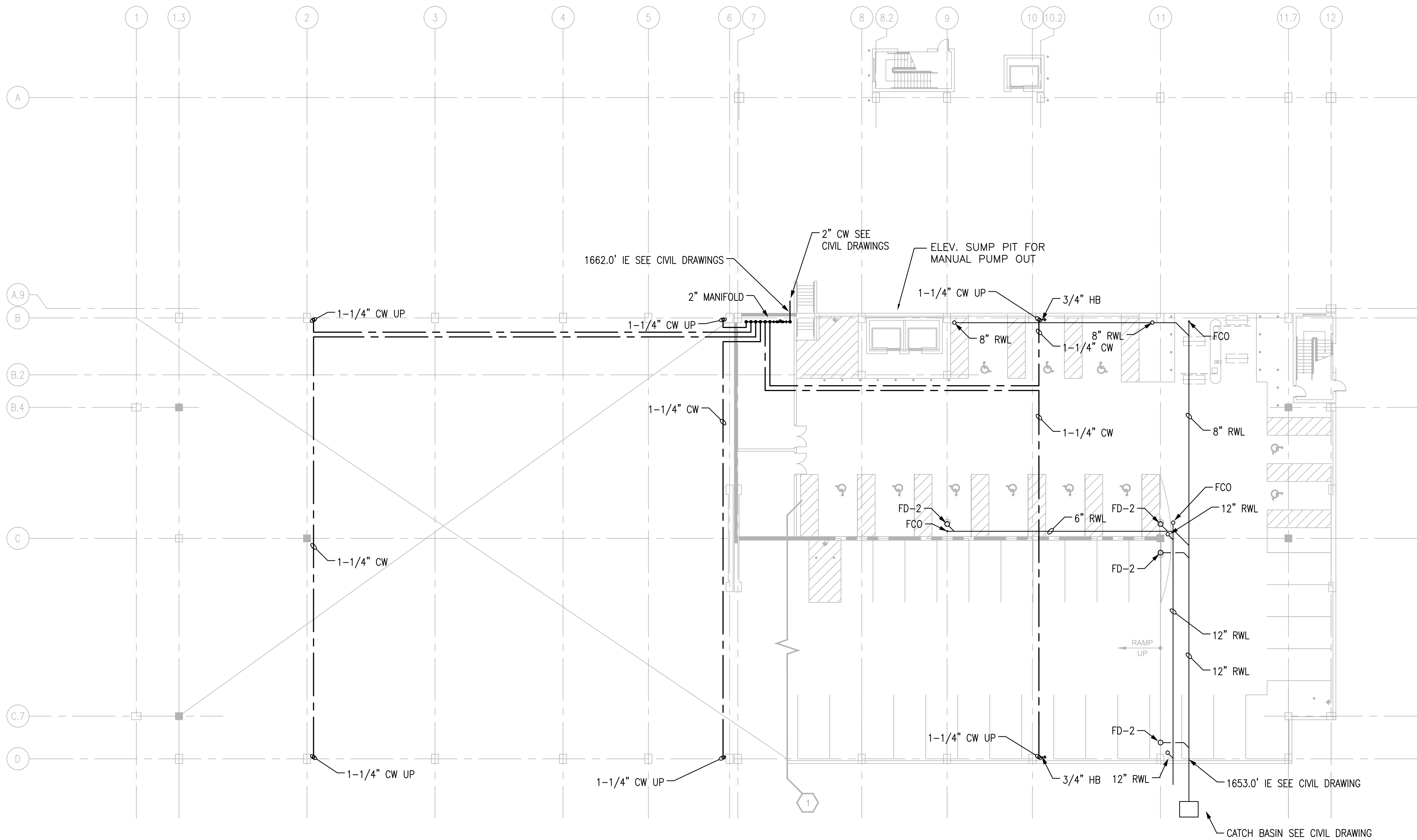
NOTE:
NOT ALL ABBREVIATIONS OR
SYMBOLS APPLY TO THIS PROJECT

GENERAL NOTES

- ALL PLUMBING WORK SHALL CONFORM WITH THE REQUIREMENTS AND REGULATIONS OF INTERNATIONAL PLUMBING CODE, VA STANDARDS AND REGULATIONS, AND ALL LOCAL AUTHORITY HAVING JURISDICTION.
- ALL PLUMBING SHALL BE COORDINATED AND VERIFIED FOR ANY INTERFERENCE WITH OTHER TRADES, BEFORE FABRICATION AND INSTALLATION.
- CONTRACTOR SHALL COORDINATE WITH THE CIVIL DRAWINGS FOR ALL REQUIRED CONNECTIONS AND INTERFACE OF WATER, AND STORM LINES
- THE CONTRACTOR SHALL PROVIDE, INSTALL AND MAKE FINAL CONNECTIONS TO ALL FIXTURES DESIGNATED ON THE ARCHITECTURAL AND PLUMBING DRAWINGS.
- ANY FIXTURES DAMAGED DUE TO THE CONTRACTORS NEGLIGENCE WILL BE REPLACED BY THE CONTRACTOR AT NO ADDITIONAL COST TO THE OWNER.
- UNLESS OTHERWISE NOTED, ALL GRAVITY LINES SHALL BE INSTALLED WITH INVERTS OF 1'-6" BELOW FINISHED FLOOR AT THE START OF EACH LINE.
- ALL ABOVE GROUND HORIZONTAL PIPING LOCATED IN AREAS PROVIDED WITH SUSPENDED CEILING SHALL BE INSTALLED ABOVE SUCH CEILING UNLESS OTHERWISE NOTED.
- PLUMBING SUPPORTS AND HANGERS SHALL BE COORDINATED WITH THE GENERAL CONTRACTOR. ALL SLEEVES REQUIRED SHALL BE PROVIDED BY THE CONTRACTOR. PIPING SUPPORTS AND HANGERS SHALL BE IN ACCORDANCE WITH H-18-8 VA SEISMIC DESIGN REQUIREMENTS.
- ALL PLUMBING STORM PIPING SYSTEMS SHALL BE PROVIDED WITH FLOOR CLEANOUTS (FCO) WALL CLEANOUTS (WCO) OR STRAIGHT PIPE CLEANOUTS (CO) AS SHOWN AND AS REQUIRED BY CODE.
- COORDINATE LOCATION OF FIXTURES WITH ARCHITECTURAL DRAWINGS.
- CLEANOUT PLUGS SHALL BE INSTALLED AT THE BASE OF ALL STORM PIPING SYSTEMS STACKS.
- SLOPE SHALL BE 1/8" PER FOOT UNLESS OTHERWISE NOTED FOR STORM/CONDENSATE PIPING 3" AND LARGER (1/4" PER FOOT FOR 2 1/2" AND SMALLER).
- REFER TO RISER DIAGRAMS FOR PIPING TO PLUMBING FIXTURES.

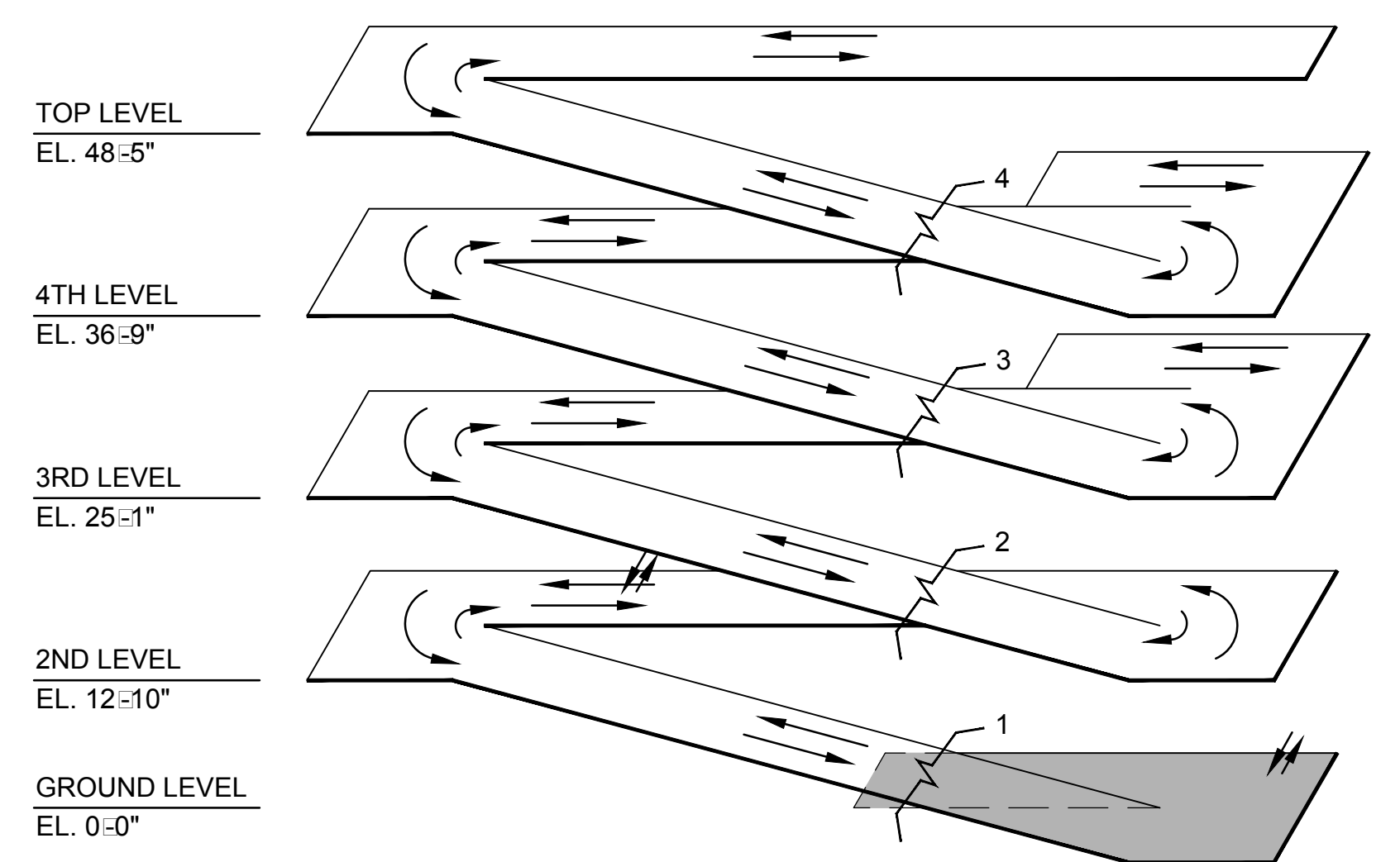
FINAL CONSTRUCTION DRAWINGS
APPROVED FOR CONSTRUCTION

Dwg. File	ARCHITECT/ENGINEERS:	Stephen T. Stoffe, PE Florida Reg. 70349	CONSULTANTS:	Approved:	Drawing Title	Project Title	Date		
	AKEA INC.		WALKER PARKING CONSULTANTS 4904 Eisenhower Blvd Suite 150 Tampa, FL 33634 813.888.5800 Ph 813.888.5822 Fax BE-0003840 www.walkerparking.com	Asst. Chief, Engineering Service Engineering Bldg. Maint. Foreman Engineering Operation Foreman Engineering Health & Safety Engineering Planning & Analysis C.O.T.R.	LEGENDS SYMBOLS AND ABBREVIATIONS	CONSTRUCT 525 SPACE PARKING GARAGE	MARCH 26, 2015		
	3603 NW 98TH ST., SUITE B GAINESVILLE, FLORIDA 32606 PH: (352) 474-6124 FAX: (352) 474-6324 CERT OF AUTH: FL #26693 EXPIRES: 02/28/2017		FRANK DAUCHTRY architect 200 E. Government Street Suite 240-A Pensacola, FL 32502 Voice 850-433-3023 Fax 850-433-3025 Email frank@frankda.com			CONTRACT No. VA249-14-C-0150 P.O. No. 621C40254	Project No. 621-330		
Revisions	Date	AKEA, INC.	SEAL		Approved: Chief, Engineering Service	Building Number 160	Checked STS	Drawn CRR	DRAWING NO. P001
					Approved: Service Chief	Location VAMC MOUNTAIN HOME, TENNESSEE			Page 89 of 131



PLUMBING SYSTEMS PLAN - GROUND LEVEL

SCALE: 1/16" = 1'



ISOMETRIC

FINAL CONSTRUCTION DRAWINGS
APPROVED FOR CONSTRUCTION

SHEET NOTES

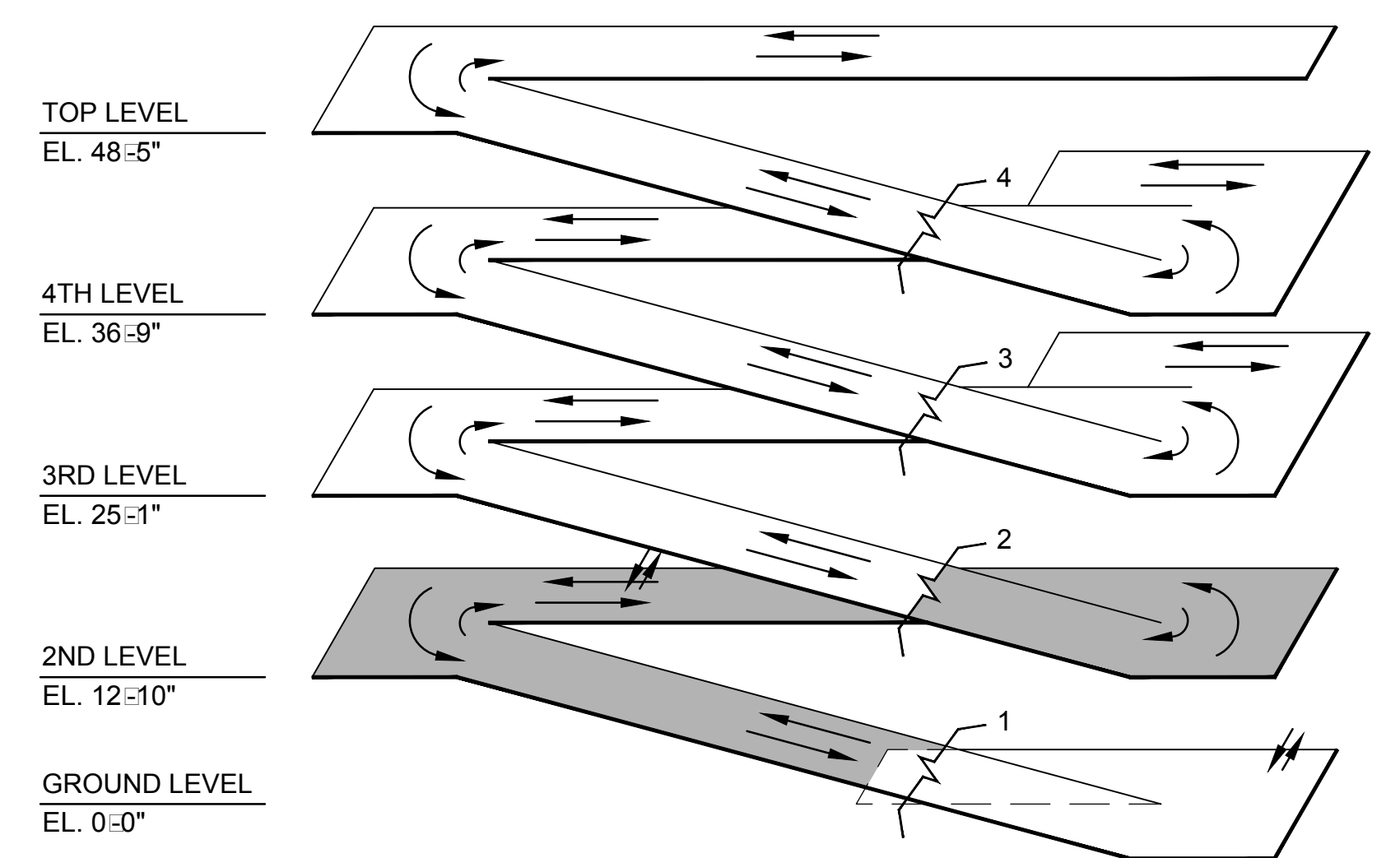
A. PROVIDE SEISMIC BRACING FOR ALL
PIPING IN ACCORDANCE WITH THE SEISMIC
CODE FOR MOUNTAIN HOME TENNESSEE.

SHEET KEYNOTES

NOT USED



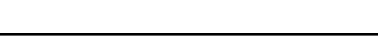
Dwg. File	ARCHITECT/ENGINEERS:	Stephen T. Stoffe, PE Florida Reg. 70349	CONSULTANTS:	Approved:	Drawing Title	Project Title	Date
	AKEA INC. 3603 NW 98TH ST., SUITE B GAINESVILLE, FLORIDA 32606 PH: (352) 474-6124 FAX: (352) 474-6324 CERT OF AUTH: FL #26693 EXPIRES: 02/28/2017		WALKER PARKING CONSULTANTS 4904 Eisenhower Blvd Suite 150 Tampa, FL 33634 813.888.5900 Ph 813.888.5822 Fax BE-0003840 www.walkerparking.com	Asst. Chief, Engineering Service Engineering Bldg. Maint. Foreman Engineering Operation Foreman Engineering Health & Safety Engineering Planning & Analysis C.O.T.R.	PLUMBING SYSTEMS PLAN - GROUND LEVEL	CONSTRUCT 525 SPACE PARKING GARAGE CONTRACT No. VA249-14-C-0150 P.O. No. 621C40254	MARCH 26, 2015
Revisions		SEAL	FRANK DAUCHTRY architect 200 E. Government Street Suite 240-A Pensacola, FL 32502 Voice 850-433-3023 Fax 850-433-3025 Email frank@frankda.com		Approved: Chief, Engineering Service Approved: Service Chief	Building Number 160 Checked STS Drawn CRR Location VAMC MOUNTAIN HOME, TENNESSEE	Project No. 621-330 DRAWING NO. P200 Page 90 of 131

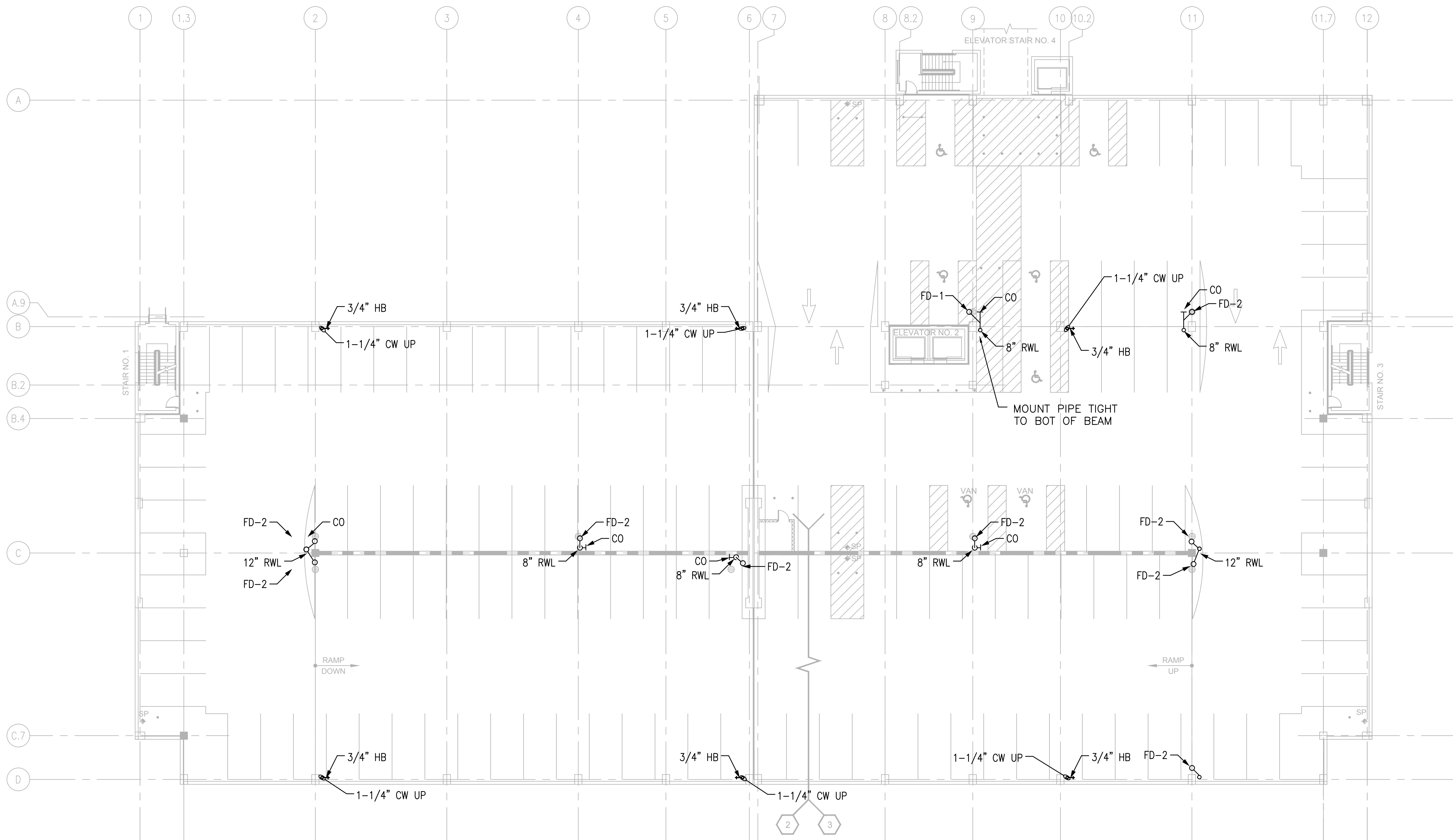
NOT USED



ISOMETRIC 

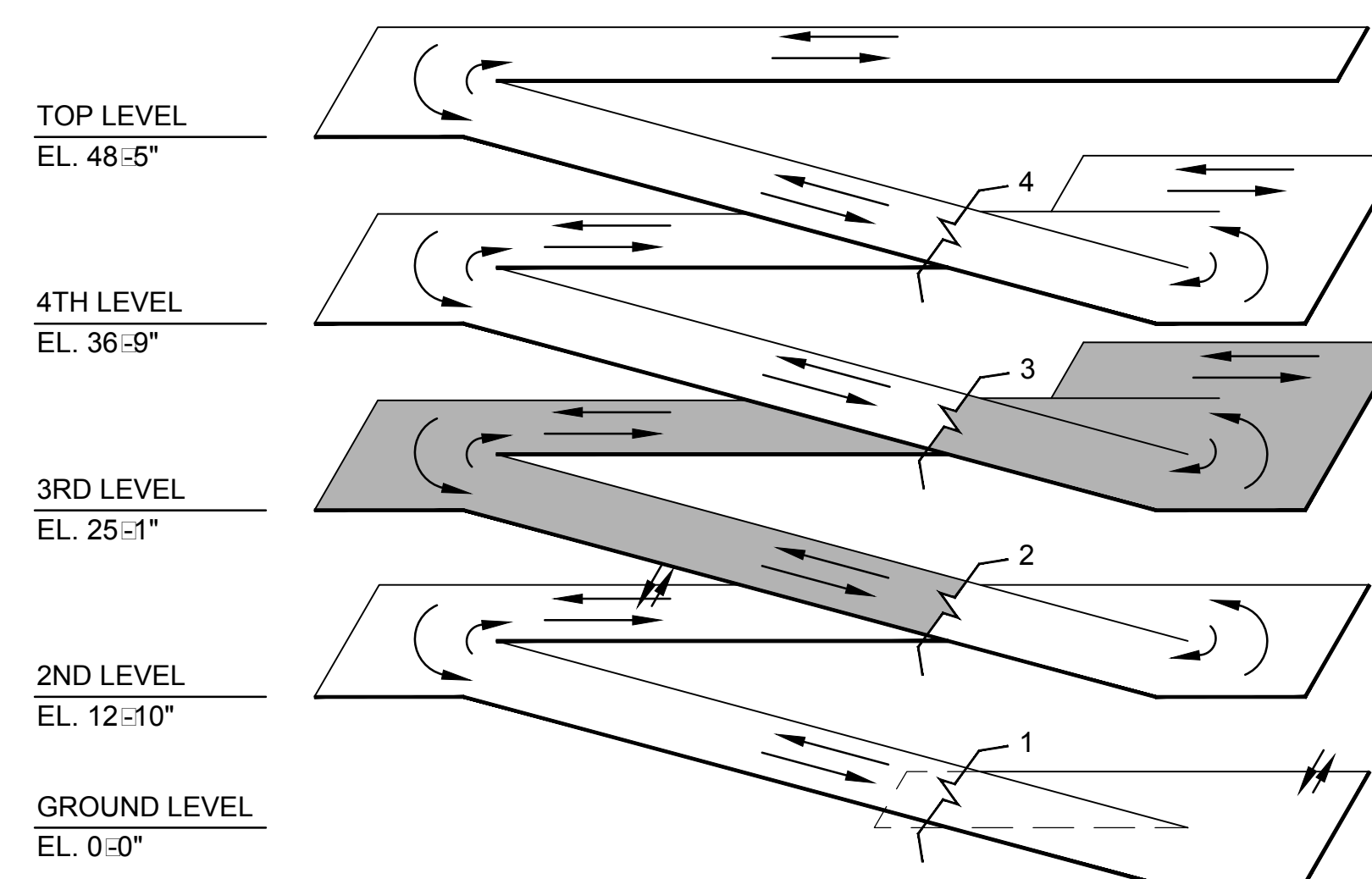
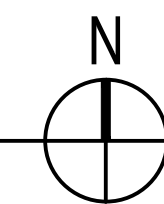
FINAL CONSTRUCTION DRAWINGS
APPROVED FOR CONSTRUCTION

Dwg. File		ARCHITECTS/ENGINEERS:		Stephen T. Steffe, PE Florida Reg. 70349		CONSULTANTS:		Approved:		Drawing Title		Project Title		Date			
				3603 NW 98TH ST., SUITE B GAINESVILLE, FLORIDA 32606 PH: (352) 474-6124 FAX: (352) 474-6324 CERT OF AUTH: FL #26693 EXPIRES: 02/28/2017		 WALKER PARKING CONSULTANTS 4904 Eisenhower Blvd Suite 150 Tampa, FL 33634 813.888.5800 Ph 813.888.5822 Fax BE-0003840 www.walkerparking.com		 FRANK DAUCHTRY architect 200 E. Government Street Suite 240-A Venuscula, FL 32502 Voice 850-433-3023 Fax 850-433-3025 Email frank@frankda.com		Asst. Chief, Engineering Service _____ Engineering Bldg. Maint. Foreman _____ Engineering Operation Foreman _____ Engineering Health & Safety _____ Engineering Planning & Analysis C.O.T.R. _____		PLUMBING SYSTEMS PLAN - SECOND LEVEL		CONSTRUCT 525 SPACE PARKING GARAGE CONTRACT No. VA249-14-C-0150 P.O. No. 621C40254		MARCH 26, 2015	
				AKEA, INC.		SEAL				Approved: Chief, Engineering Service _____		Building Number 160		Checked STS		Project No. 621-330	
										Approved: Service Chief _____		Drawn CRR		DRAWING NO. P201			
Revisions		Date										Location VAMC MOUNTAIN HOME, TENNESSEE		Page 91 of 131		Department of Veterans Affairs	



PLUMBING SYSTEMS PLAN - THIRD LEVEL

SCALE: 1/16" = 1'

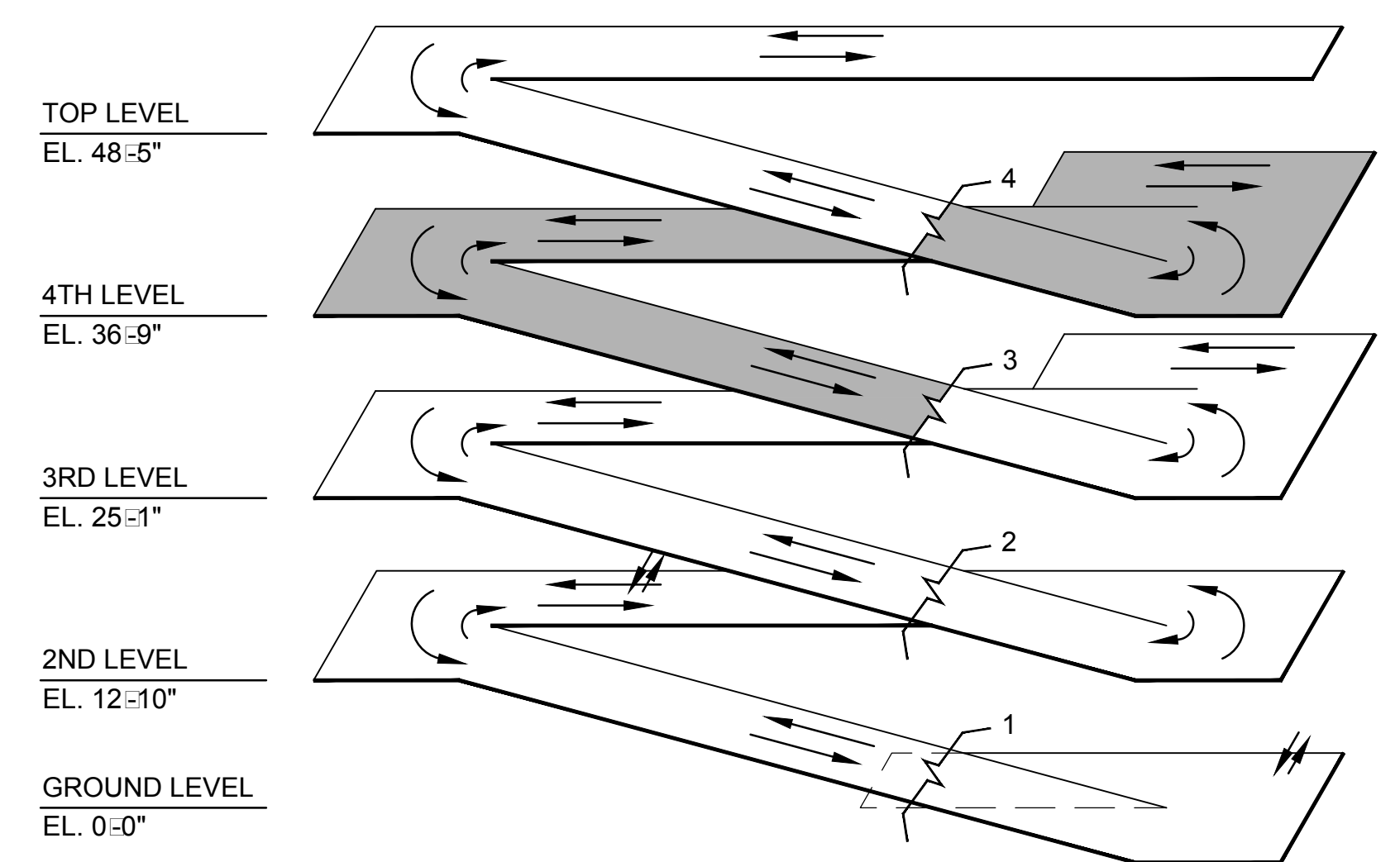


ISOMETRIC

FINAL CONSTRUCTION DRAWINGS
APPROVED FOR CONSTRUCTION

Dwg. File	ARCHITECT/ENGINEERS:	Stephen T. Sletta, PE Florida Reg. 70349	CONSULTANTS:	Approved:	Drawing Title	Project Title	Date
	AKEA INC.		WALKER PARKING CONSULTANTS	Asst. Chief, Engineering Service	PLUMBING SYSTEMS PLAN - THIRD LEVEL	CONSTRUCT 525 SPACE PARKING GARAGE	MARCH 26, 2015
	3603 NW 98TH ST., SUITE B GAINESVILLE, FLORIDA 32606 PH: (352) 474-6124 FAX: (352) 474-6324 CERT OF AUTH: FL #26693 EXPIRES: 02/28/2017		4904 Eisenhower Blvd Suite 150 Tampa, FL 33634 813.888.5800 Ph 813.888.5822 Fax BE-0003840 www.walkerparking.com	Engineering Bldg. Maint. Foreman Engineering Operation Foreman Engineering Health & Safety Engineering Planning & Analysis C.O.T.R.		CONTRACT No. VA249-14-C-0150 P.O. No. 621C40254	Project No. 621-330
Revisions		AKEA, INC.	SEAL		Approved: Chief, Engineering Service	Building Number 160	DRAWING NO. P202
					Approved: Service Chief	Checked STS	Page 92 of 131
						Drawn CRR	
						Location VAMC MOUNTAIN HOME, TENNESSEE	

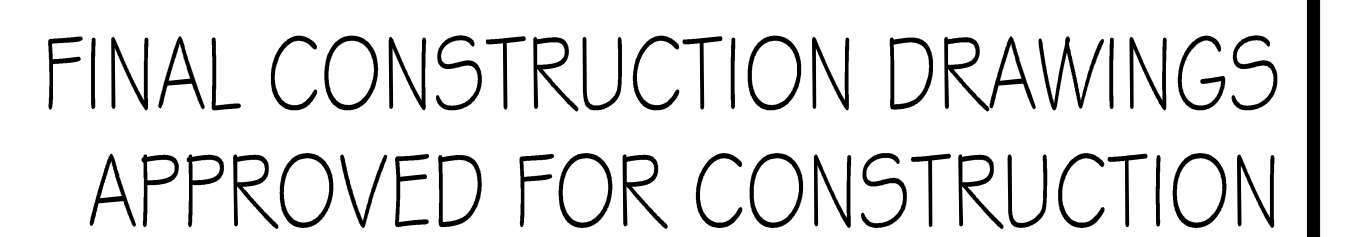
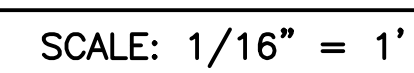
NOT USED



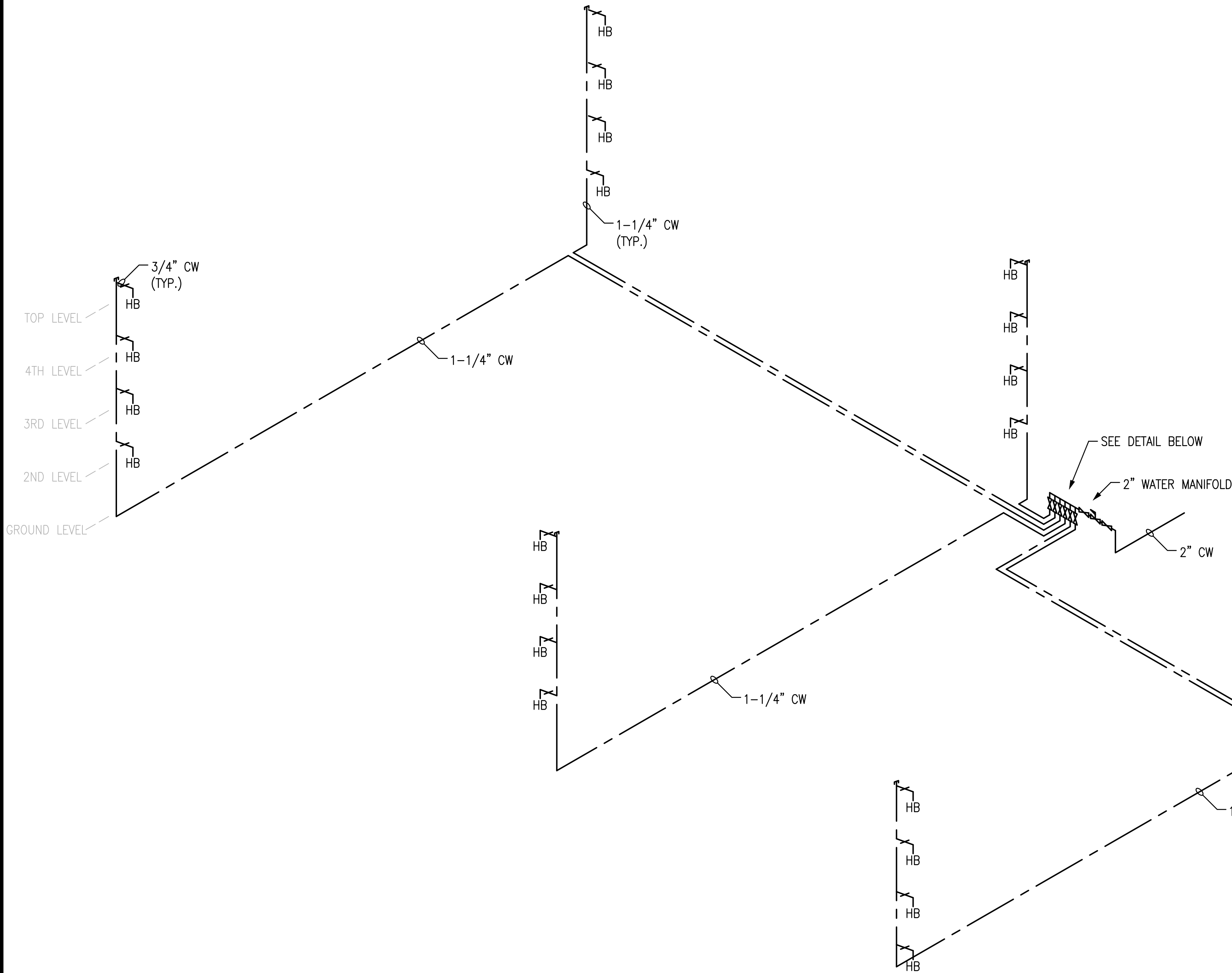
FINAL CONSTRUCTION DRAWINGS
APPROVED FOR CONSTRUCTION

VA FORM 08-6231, DEC 1989

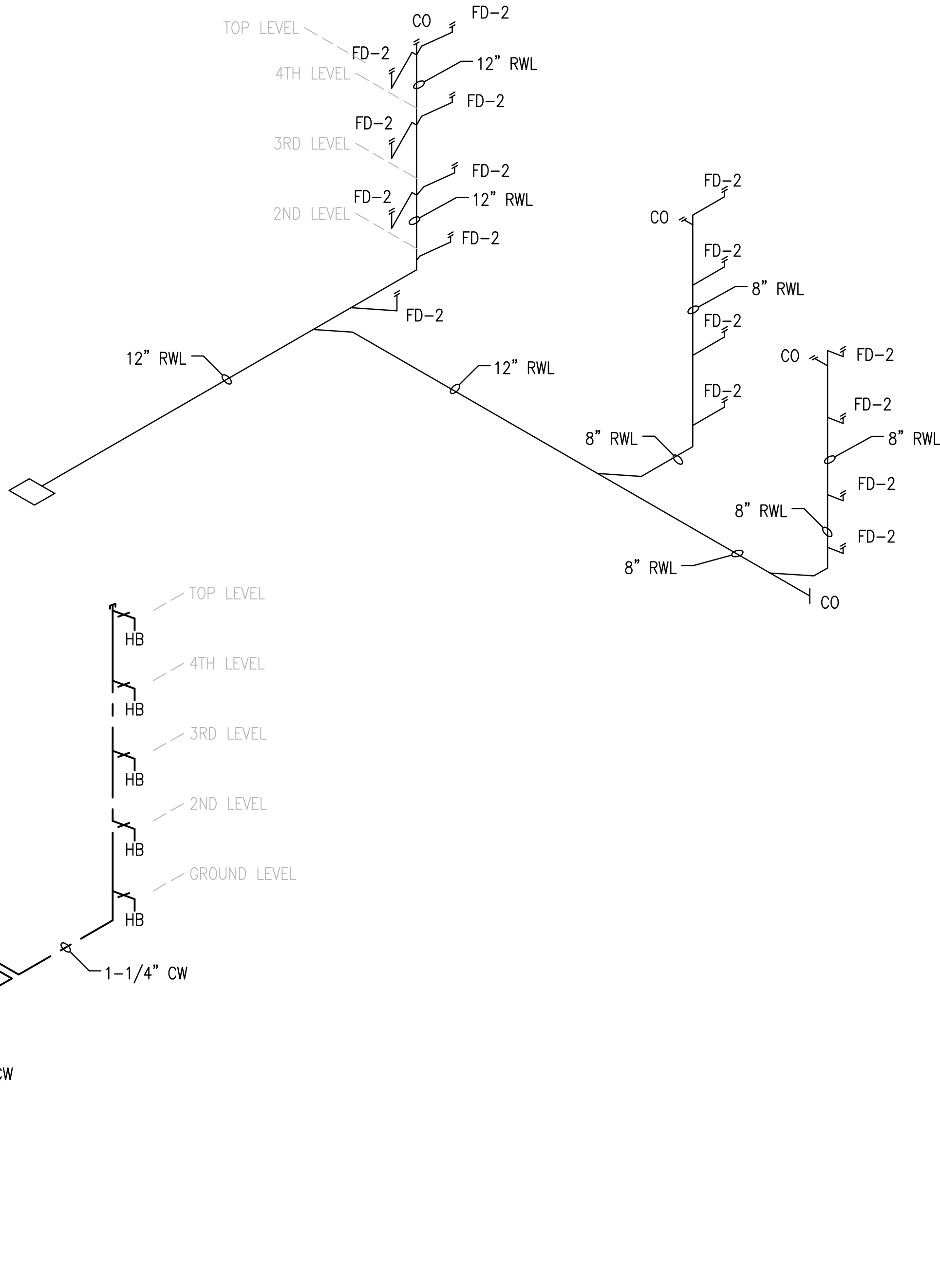
NOT USED



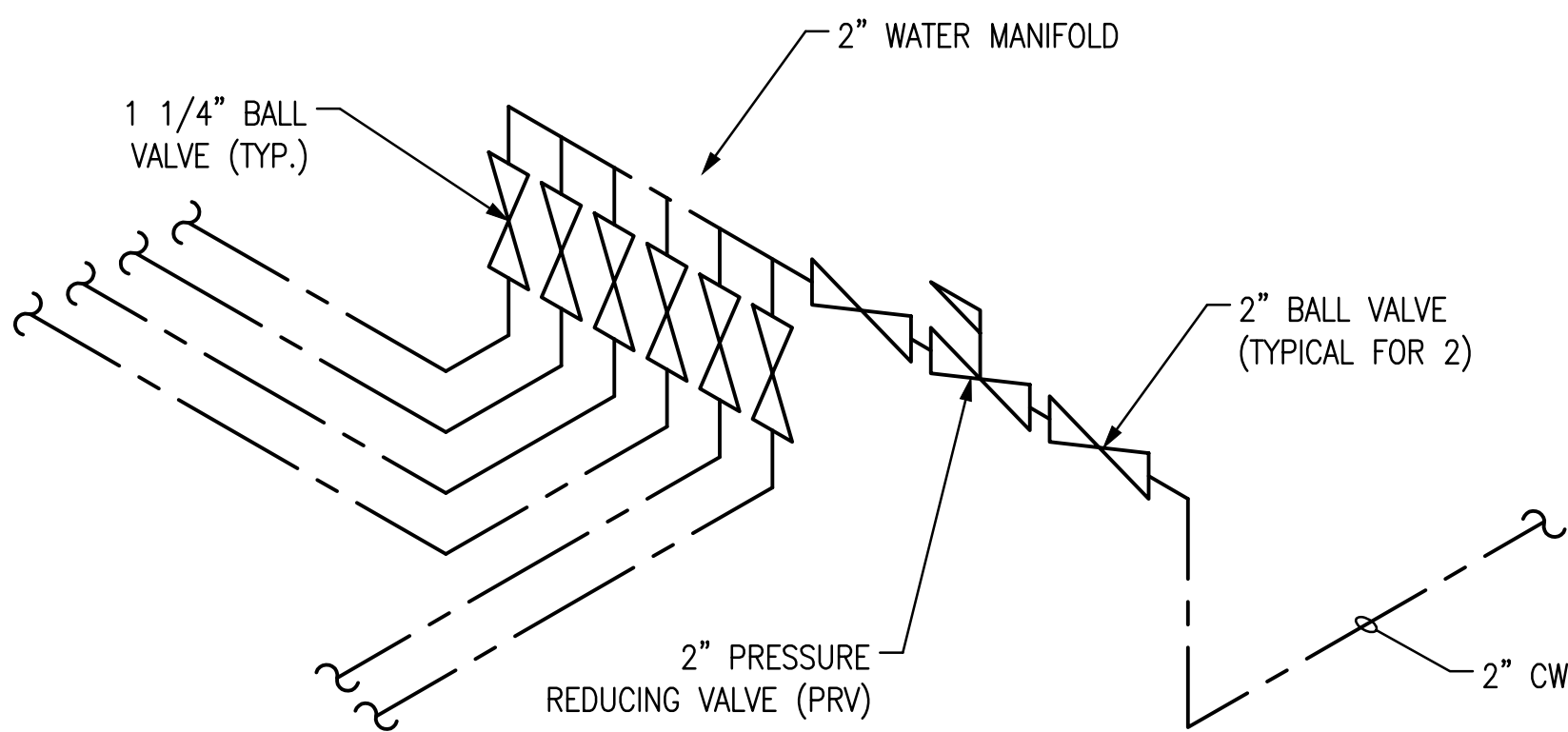
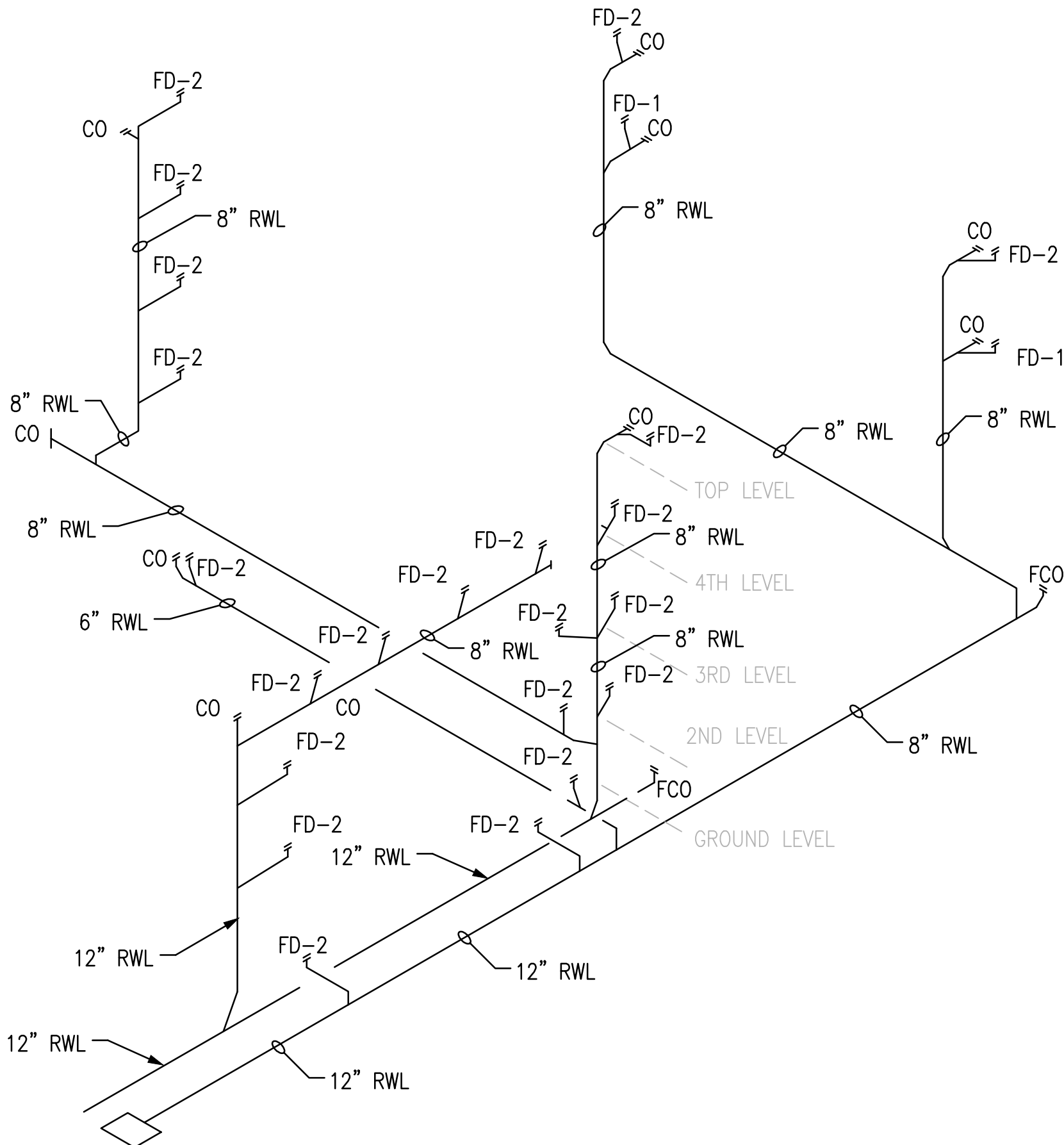
VA FORM 08-6231, DEC 1989



SUPPLY WATER RISER DIAGRAM
N.T.S.



FLOOR DRAIN RISER DIAGRAM
N.T.S.



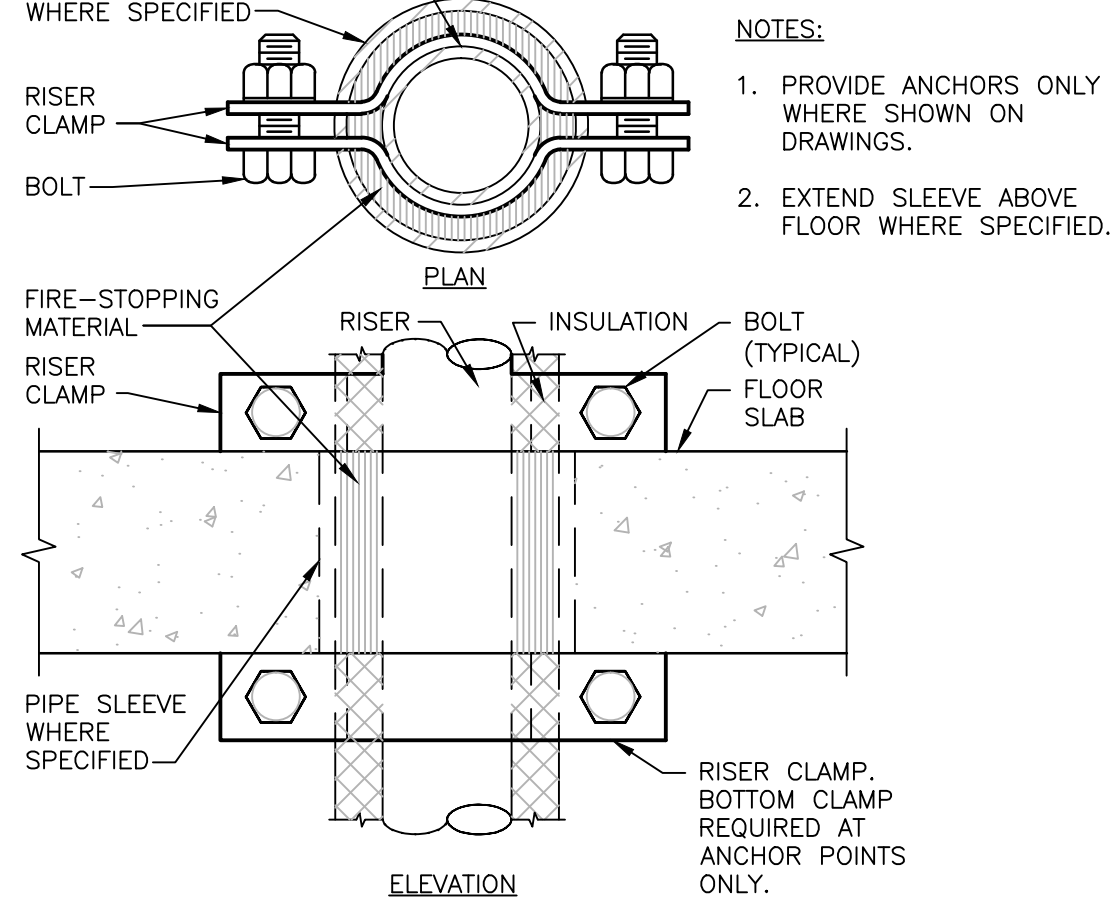
WATER MANIFOLD DETAIL
N.T.S.

FINAL CONSTRUCTION DRAWINGS
APPROVED FOR CONSTRUCTION

Dwg. File	ARCHITECT/ENGINEERS:	Stephen T. Sleffs, PE Florida Reg. 70349	CONSULTANTS:	Approved:	Drawing Title	Project Title	Date		
	AKEA INC. 3603 NW 98TH ST., SUITE B GAINESVILLE, FLORIDA 32606 PH: (352) 474-6124 FAX: (352) 474-6324 CERT OF AUTH: FL #26693 EXPIRES: 02/28/2017	SEAL	WALKER PARKING CONSULTANTS 4904 Eisenhower Blvd Suite 150 Tampa, FL 33634 813.888.5800 Ph 813.888.5822 Fax BE-0003840 www.walkerparking.com	Asst. Chief, Engineering Service Engineering Bldg. Maint. Foreman Engineering Operation Foreman Engineering Health & Safety Engineering Planning & Analysis C.O.T.R.	PLUMBING RISER DIAGRAMS	CONSTRUCT 525 SPACE PARKING GARAGE	MARCH 26, 2015		
						CONTRACT No. VA249-14-C-0150	P.O. No. 621C40254	Project No.	
						Building Number	Checked	Drawn	621-330
						160	STS	CRR	
Revisions						Location	VAMC MOUNTAIN HOME, TENNESSEE		DRAWING NO.
				P205					
				Page 95 of 131					

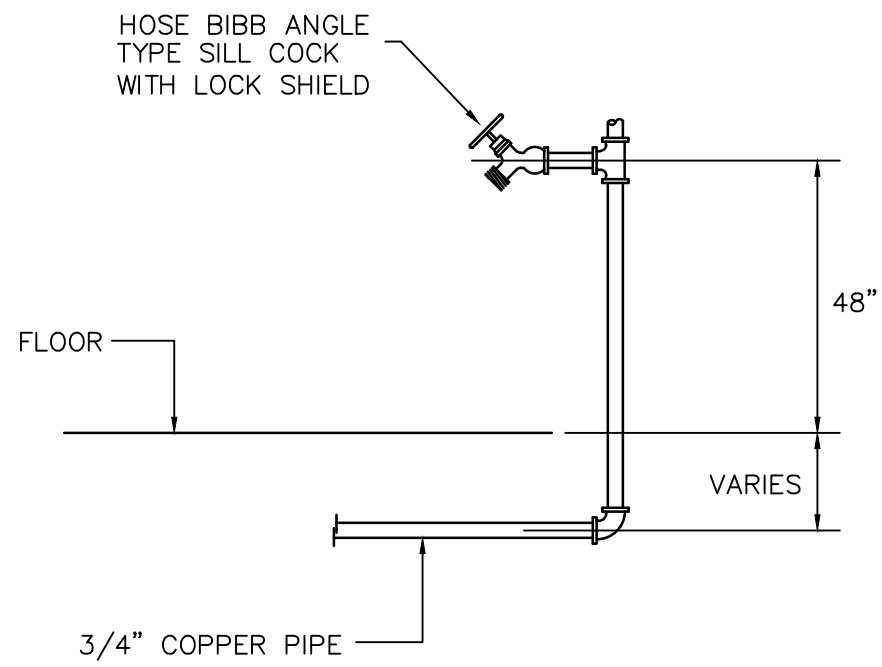
one-eighth inch = one foot
 one-quarter inch = one foot
 three-eighths inch = one foot
 one-half inch = one foot
 three-quarters inch = one foot
 one inch = one foot
 one and one-half inches = one foot
 three inches = one foot

Department of Veterans Affairs



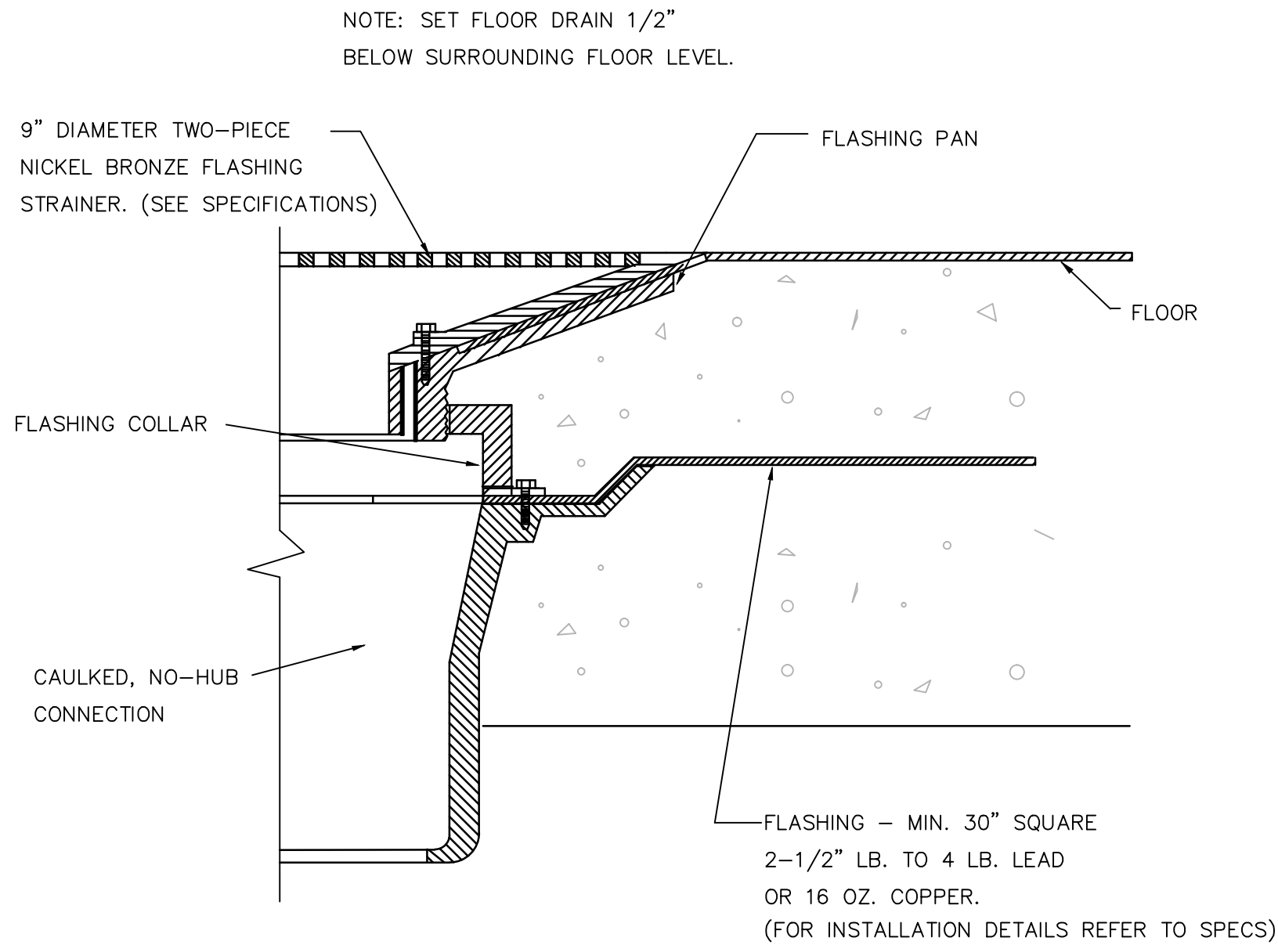
SUPPORT/ANCHOR FOR PIPE RISERS

NTS



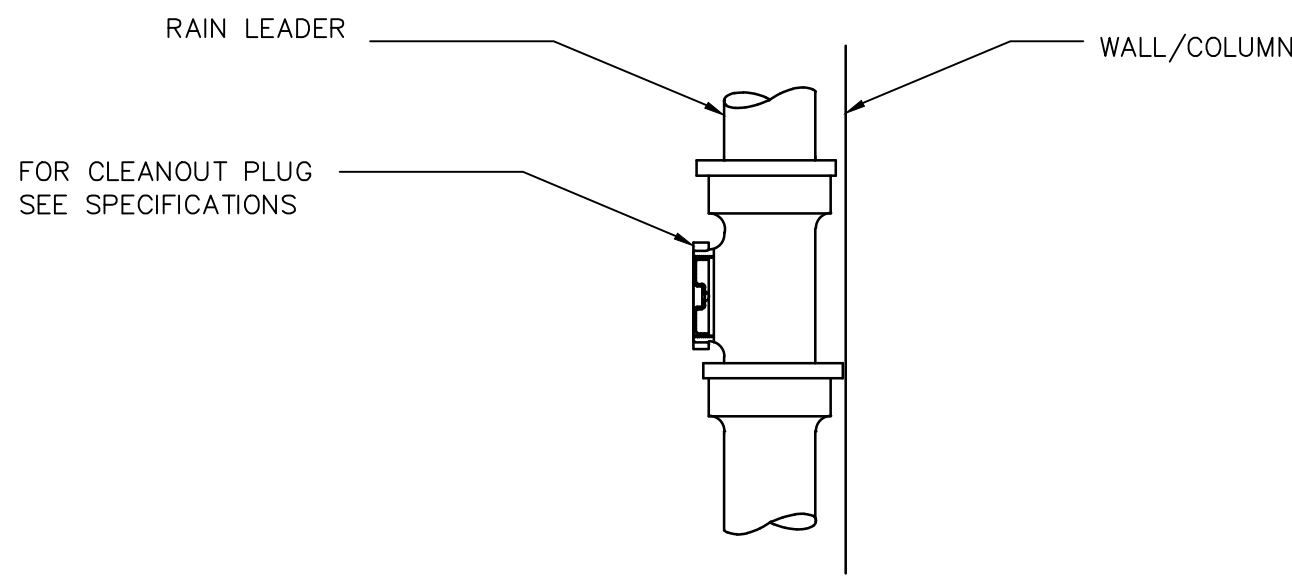
HOSE BIB

NTS



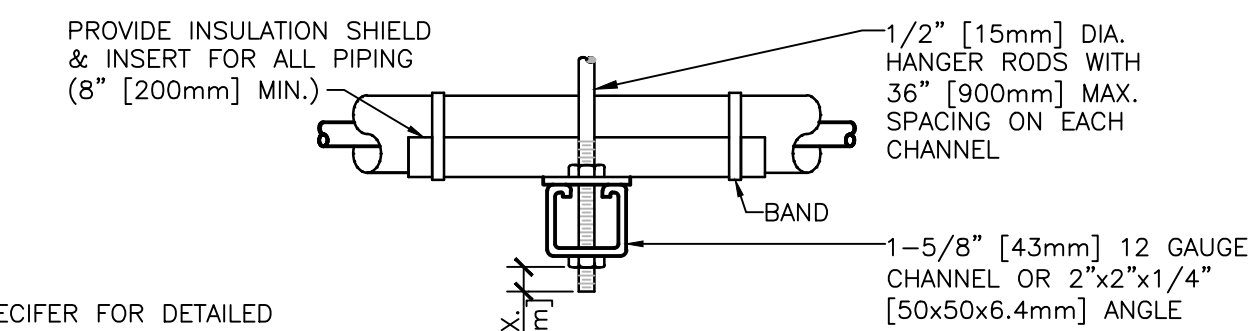
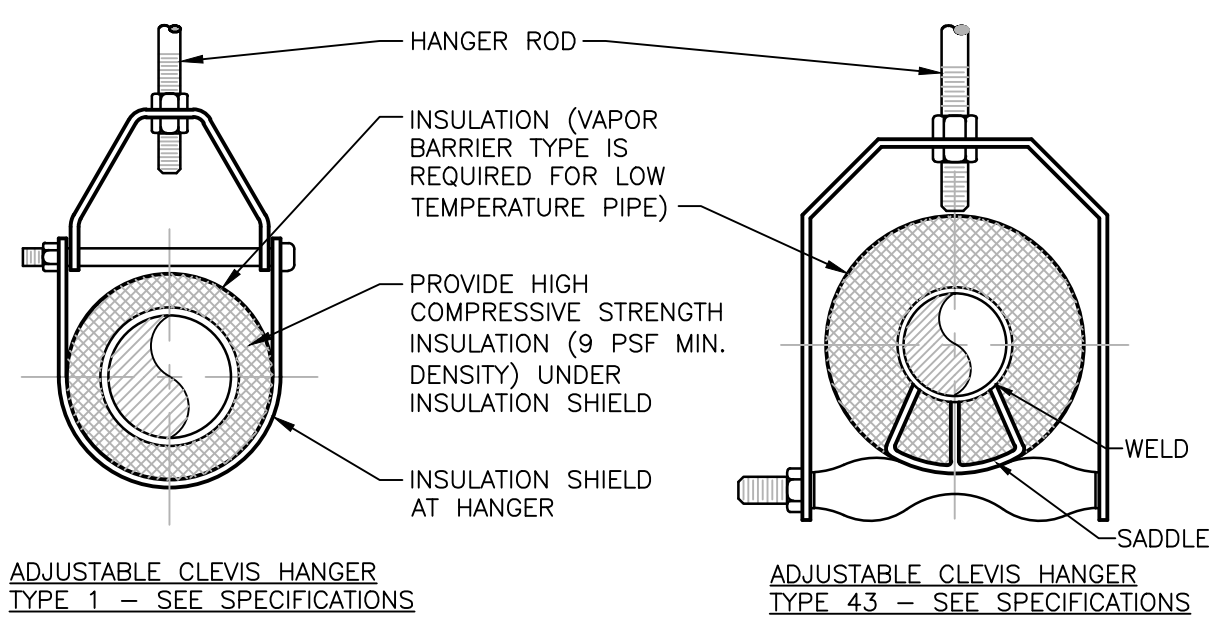
FLOOR DRAIN

NTS



VERTICAL STACK CLEANOUT

NTS



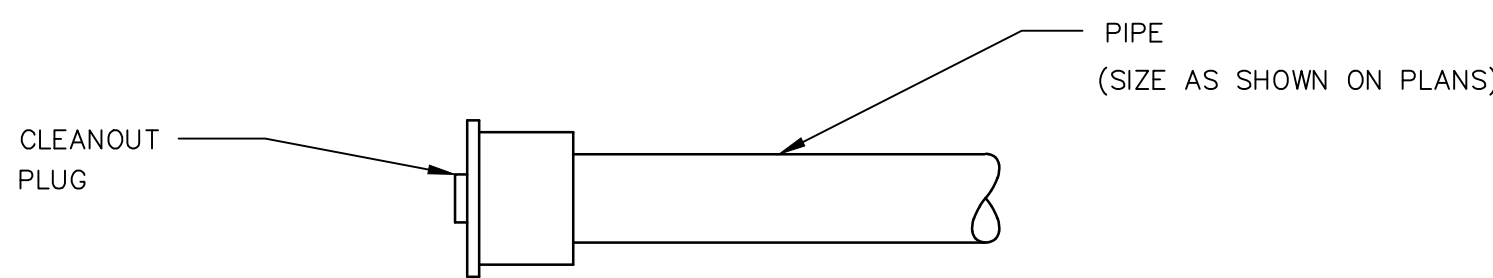
SIDE VIEW TRAPEZE HANGER FOR UP TO 1000 LB. [453KG] UNIFORM LOAD

MAXIMUM PIPE/TUBING SUPPORT SPACING																					
NOM. SIZE	IN. THRU	1	1 1/4	1 1/2	2	2 1/2	3	4	5	6	8	10	12	14	16	18	20	24			
PIPE	FT. [mm]	7	7	7	9	10	11	12	14	16	17	19	22	23	25	27	28	30	32		
TUBING	FT. [mm]	5	6	7	8	9	10	12	13	14	16	18	20	22	24	26	28	30	32		

NOTE: FOR TRAPEZE HANGER TAKE SPACING OF SMALLEST SIZE ON TRAPEZE.

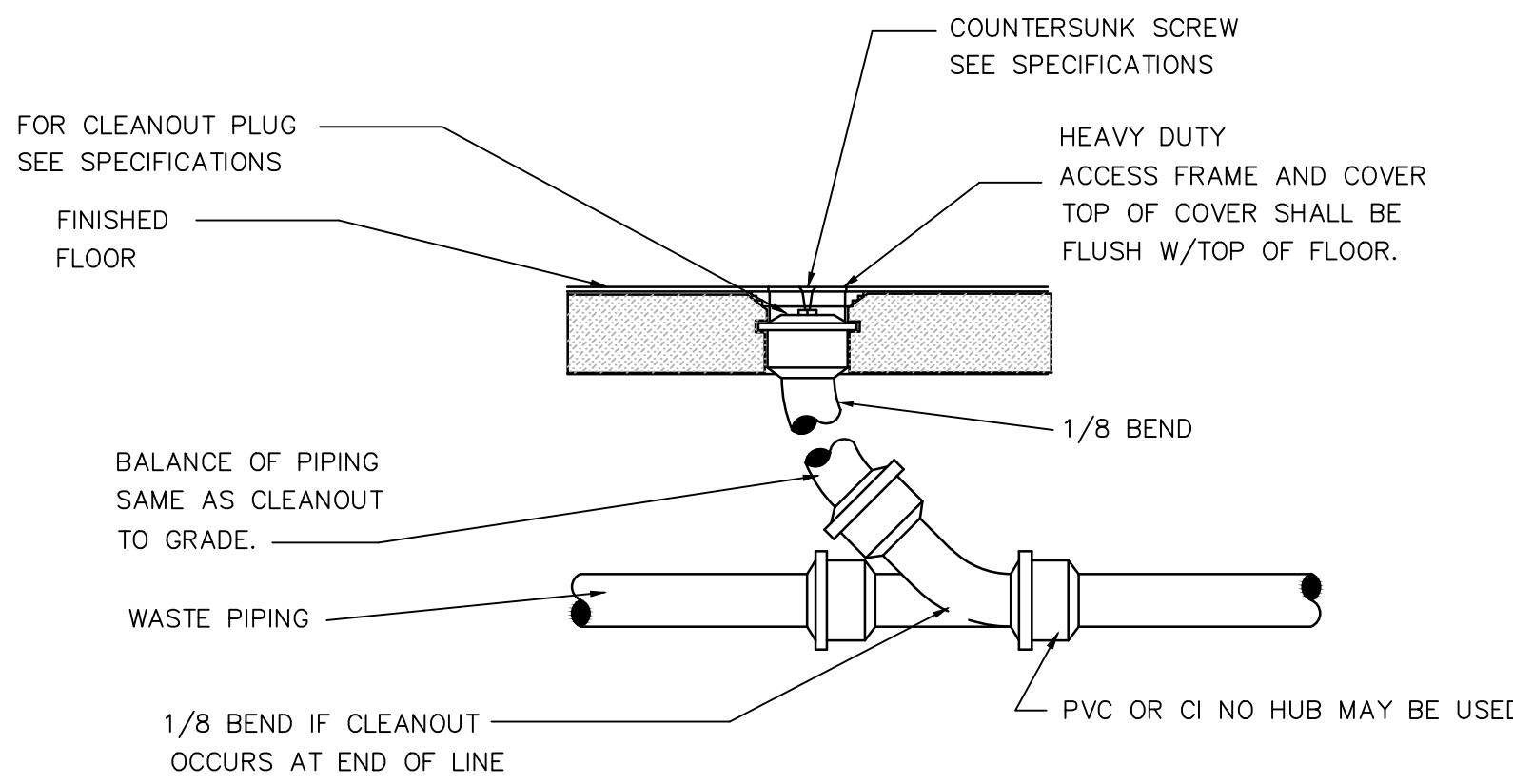
PIPE HANGERS

NTS



CLEANOUT

NTS



FLOOR CLEANOUT

NTS

FINAL CONSTRUCTION DRAWINGS
APPROVED FOR CONSTRUCTION

Dwg. File	ARCHITECT/ENGINEERS:	Stephen T. Stoffe, PE Florida Reg. 70349	CONSULTANTS:	Approved:	Drawing Title	Project Title	Date
	AKEA INC.	3603 NW 98TH ST., SUITE B GAINESVILLE, FLORIDA 32606 PH: (352) 474-6124 FAX: (352) 474-6324 CERT OF AUTH: FL #26693 EXPIRES: 02/28/2017	WALKER PARKING CONSULTANTS 4904 Eisenhower Blvd Suite 150 Tampa, FL 33634 813.888.5800 Ph 813.888.5822 Fax BE-0003840 www.walkerparking.com	Asst. Chief, Engineering Service Engineering Bldg. Maint. Foreman Engineering Operation Foreman Engineering Health & Safety Engineering Planning & Analysis C.O.T.R.	DETAILS	CONSTRUCT 525 SPACE PARKING GARAGE CONTRACT No. VA249-14-C-0150 P.O. No. 621C40254	MARCH 26, 2015
Revisions	Date	AKEA, INC.	SEAL		Approved: Chief, Engineering Service	Building Number 160	Checked STS
					Approved: Service Chief	Drawn CRR	Project No. 621-330
						Location VAMC MOUNTAIN HOME, TENNESSEE	DRAWING NO. P700 Page 97 of 131